

RANGE COMPOSITION

The range consists of 7 single bowl sinks on legs ranging from 700 to 1400 mm in length.



132459

700/1400 mm

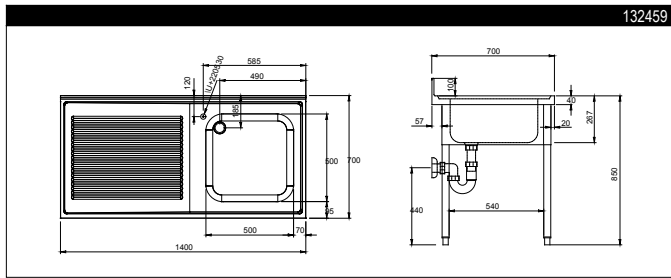
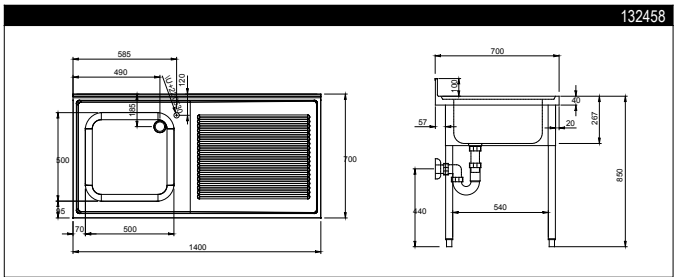
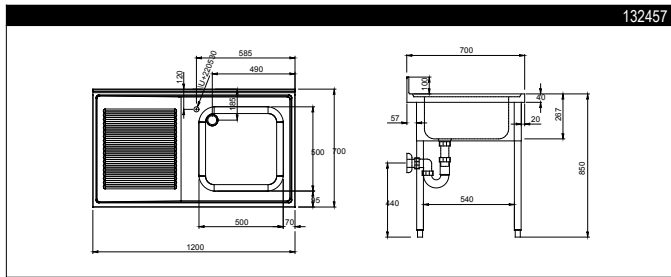
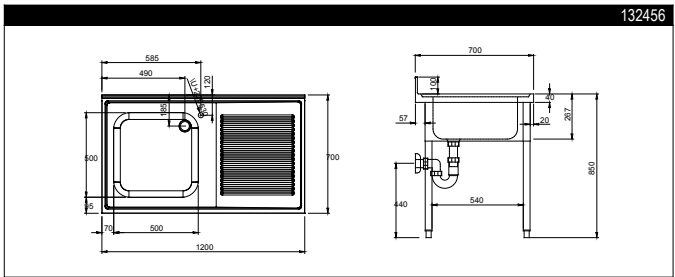
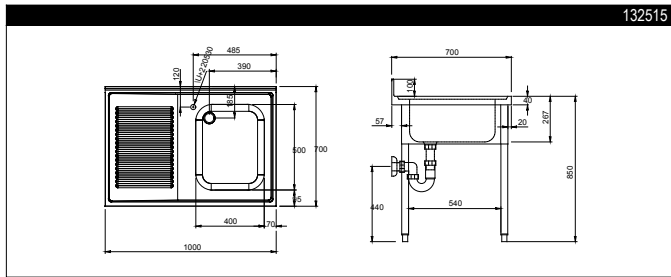
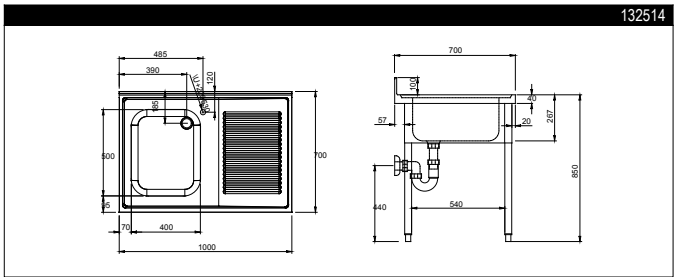
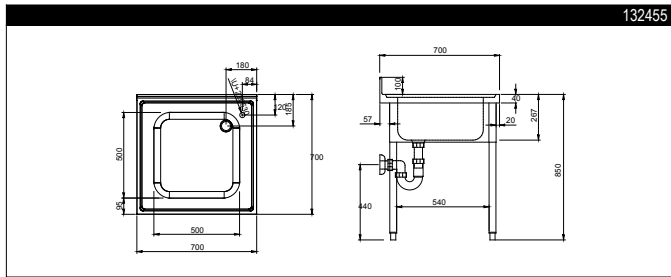
ECO SINGLE BOWL SINKS ON LEGS **ZANUSSI** PROFESSIONAL

FUNCTIONAL AND CONSTRUCTION FEATURES

◆ The sink units are delivered already assembled.

- ◆ 40 mm high worktop in 304 AISI stainless steel, 700 mm in depth.
- ◆ Shelf 40 mm in height in stainless steel with riveted corners and trasversal reinforcements (accessory available upon request).
- ◆ 40x40 mm square section feet in 304 AISI stainless steel.
- ◆ Front and side paneling in stainless steel and back paneling in stainless steel.
- ◆ 100 mm upstand.

TECHNICAL DATA							
CHARACTERISTICS	MODELS						
	SL07 132455	SL10D 132514	SL10S 132515	SL12D 132456	SL12S 132457	SL14D 132458	SL14S 132459
External dimensions - mm							
width	700	1000	1000	1200	1200	1400	1400
depth	700	700	700	700	700	700	700
height	850	900	900	850	850	850	850
Upstand dimensions - mm							
height	100	100	100	100	100	100	100
depth	13	13	13	13	13	13	13
radius	90°	90°	90°	90°	90°	90°	90°
Bowls - n.	1	1	1	1	1	1	1
Bowl dimensions (wxdxh) - mm	500x500xH250	400X500XH250	400X500XH250	500x500xH250	500x500xH250	500x500xH250	500x500xH250
Net weight - kg.	20	40	40	42	42	46	46



LEGEND	SL07 132455	SL10D 132514	SL10S 132515	SL12D 132456	SL12S 132457	SL14D 132458	SL14S 132459
A - Hot water inlet	3/4"	3/4"	3/4"	3/4"	3/4"	3/4"	3/4"
B - Cold water inlet	3/4"	3/4"	3/4"	3/4"	3/4"	3/4"	3/4"
C - Water drain	1 1/2"	1 1/2"	1 1/2"	1 1/2"	1 1/2"	1 1/2"	1 1/2"

OPTIONAL ACCESSORIES	MODELS						
	SL07 132455	SL10D 132514	SL10S 132515	SL12D 132456	SL12S 132457	SL14D 132458	SL14S 132459
ELBOW OP.MIX.TAP+SHORT SPOUT-3/4" HOLE			855323	855323			
ELBOW OP.MIXER TAP+SPOUT-3/4" SINGLE HOLE	855322	855322			855322	855322	855322
ELBOW OP.TAP+SPRAY ARM+SPOUT-3/4" HOLE	855324	855324	855324	855324	855324	855324	855324
FOOT OP.MIXER TAP(HOT+COLD)+SPOUT-3/4"	855328	855328	855328	855328	855328	855328	855328
LOWER SHELF 1000MM		855167	855167				
LOWER SHELF 1200MM				855168	855168		
LOWER SHELF 1400MM						855169	855169
LOWER SHELF 700MM	855165						
MAXIREEL-RETRACTABLE HOSE SPRAY UNIT 6M	855327	855327	855327	855327	855327	855327	855327
MIXER TAP W/FOOT PEDAL FOR SINKS ON LEGS	855317	855317	855317	855317	855317	855317	855317
MIXER TAP WITH SPOUT 3/4" SINGLE HOLE	855319	855319	855319	855319	855319	855319	855319
MIXER TAP(INFRARED)+SPOUT 3/4"SING.HOLE	855325	855325			855325	855325	855325
MIXER TAP+SPRAY ARM+SPOUT-3/4" SING.HOLE	855329	855329	855329	855329	855329	855329	855329
PRE-WASH SPRAY UNIT,SINGLE HOLE	855315	855315	855315	855315	855315	855315	855315
SINGLE BRASS DRAIN SYPHON 1.5"	855308	855308	855308	855308	855308	855308	855308
SINGLE PLASTIC DRAIN SYPHON 1.5"	855306	855306	855306	855306	855306	855306	855306
WALL MIX.TAP+SPRAY+SPOUT+SH.LEVER+THERM	855307	855307	855307	855307	855307	855307	855307
WALL MIXER TAP WITH SWIVEL SPOUT 3/4"	855310	855310	855310	855310	855310	855310	855310



www.zanussiprofessional.com

Free Manuals Download Website

<http://myh66.com>

<http://usermanuals.us>

<http://www.somanuals.com>

<http://www.4manuals.cc>

<http://www.manual-lib.com>

<http://www.404manual.com>

<http://www.luxmanual.com>

<http://aubethermostatmanual.com>

Golf course search by state

<http://golfingnear.com>

Email search by domain

<http://emailbydomain.com>

Auto manuals search

<http://auto.somanuals.com>

TV manuals search

<http://tv.somanuals.com>