

RANGE COMPOSITION

A range of hoods supplementing the 'inductive emission' principle and automatic filter washing. Untreated air is introduced inside to partly compensate for that removed. This results in better drawing of fumes towards the filter surface and reduced air-treatment costs. The inside filters have water sprayer nozzles controlled by the special panel which controls washing functions. The range consists of hoods with 8 different lengths (1200, 1600, 2000, 2400, 2800, 3200, 3600 and 4000 mm) and 1300 mm deep.



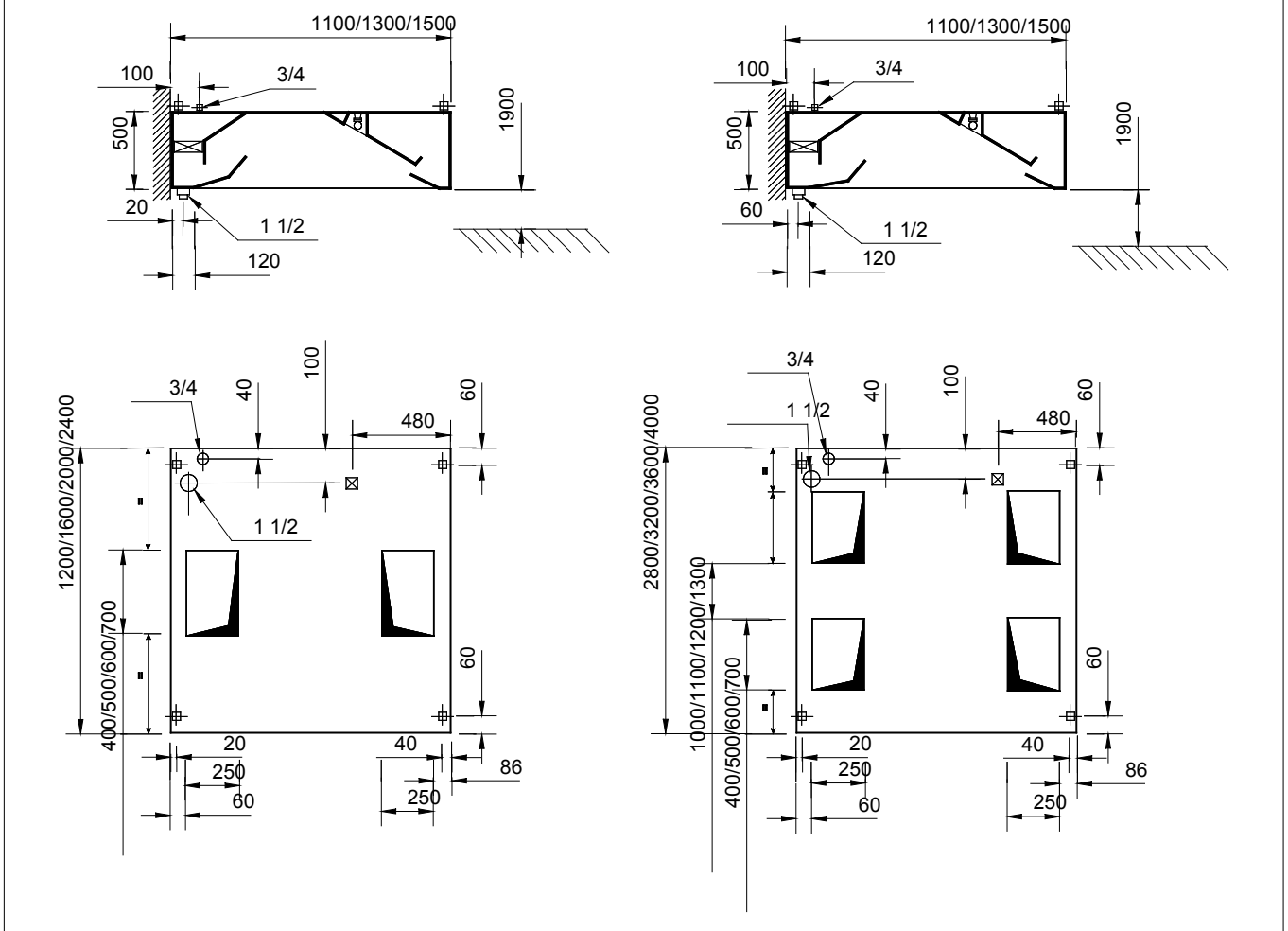
SUPERTREDILWASH - SW line - 1300mm

304 AISI WALL TYPE HOODS **ZANUSSI** PROFESSIONAL

FUNCTIONAL AND CONSTRUCTION FEATURES

- ◆ Constructed entirely in 304 AISI stainless steel.
- ◆ Compensated flow exhaust system (air inlet from outdoors).
- ◆ Automatic built-in filter-washing.
- ◆ Supplied with "CHICANE" filter packs in 304 AISI stainless steel with built-in lighting and drain pipe diam.= 1 1/2" in 304 AISI stainless steel.
- ◆ Brass nozzles with full cone-shaped jets and fast joints in stainless steel complete with gasket and nylon connector.
- ◆ Water pipes in 304 AISI stainless steel.
- ◆ All parts in contact with the inlet air flow, at external temperature, are insulated to avoid condensation.
- ◆ Eyebolts and screw anchors for ceiling installation.
- ◆ Heating and air conditioning costs reduced up to 60%.

| TECHNICAL DATA | | | | | | | | |
|---------------------------|---------------------|---------------------|---------------------|---------------------|---------------------|---------------------|---------------------|---------------------|
| CHARACTERISTICS | MODELS | | | | | | | |
| | STWP1312 640243 | STWP1316 640244 | STWP1320 640245 | STWP1324 640246 | STWP1328 640247 | STWP1332 640248 | STWP1336 640249 | STWP1340 640043 |
| External dimensions - mm | | | | | | | | |
| width | 1200 | 1600 | 2000 | 2400 | 2800 | 3200 | 3600 | 4000 |
| depth | 1300 | 1300 | 1300 | 1300 | 1300 | 1300 | 1300 | 1300 |
| height | 500 | 500 | 500 | 500 | 500 | 500 | 500 | 500 |
| Air Capacity - mc/h | 1800 | 2300 | 2900 | 3500 | 4100 | 4600 | 5200 | 5800 |
| Inlet Air Capacity - mc/h | 1320 | 1740 | 1920 | 2220 | 2640 | 3000 | 3360 | 3720 |
| Net weight - kg. | 93 | 114 | 133 | 157 | 179 | 200 | 222 | 243 |
| Supply voltage | 220 V, 1N, 50/60 | 220 V, 1N, 50/60 | 220 V, 1N, 50/60 | 220 V, 1N, 50/60 | 220 V, 1N, 50/60 | 220 V, 1N, 50/60 | 220 V, 1N, 50/60 | 220 V, 1N, 50/60 |



LEGEND

| | STWP1312 640243 | STWP1316 640244 | STWP1320 640245 | STWP1324 640246 | STWP1328 640247 | STWP1332 640248 | STWP1336 640249 | STWP1340 640043 |
|---------------------------|---------------------|---------------------|---------------------|---------------------|---------------------|---------------------|---------------------|---------------------|
| C - Water drain | 1"1/2 | 1"1/2 | 1"1/2 | 1"1/2 | 1"1/2 | 1"1/2 | 1"1/2 | 1"1/2 |
| I - Electrical connection | 220 V, 1N, 50/60 | 220 V, 1N, 50/60 | 220 V, 1N, 50/60 | 220 V, 1N, 50/60 | 220 V, 1N, 50/60 | 220 V, 1N, 50/60 | 220 V, 1N, 50/60 | 220 V, 1N, 50/60 |

OPTIONAL ACCESSORIES

| ACCESSORIES | MODELS | | | | | | | |
|--|--------------------|--------------------|--------------------|--------------------|--------------------|--------------------|--------------------|--------------------|
| | STWP1312 640243 | STWP1316 640244 | STWP1320 640245 | STWP1324 640246 | STWP1328 640247 | STWP1332 640248 | STWP1336 640249 | STWP1340 640043 |
| EXTRACTION PLENUM FOR HOOD 2400 MM | | | | 640138 | | | | |
| EXTRACTION PLENUM FOR HOOD 2800 MM | | | | | 640139 | | | |
| EXTRACTION PLENUM FOR HOOD 3200 MM | | | | | | 640140 | | |
| EXTRACTION PLENUM FOR HOOD 3600 MM | | | | | | | 640141 | |
| EXTRACTION PLENUM FOR HOOD 4000 MM | | | | | | | | 640142 |
| GALVAN. AIR INLET PLENUM FOR HOOD 2400MM | | | | 640374 | | | | |
| GALVAN. AIR INLET PLENUM FOR HOOD 2800MM | | | | | 640375 | | | |
| GALVAN. AIR INLET PLENUM FOR HOOD 3200MM | | | | | | 640376 | | |
| GALVAN. AIR INLET PLENUM FOR HOOD 3600MM | | | | | | | 640377 | |
| GALVAN. AIR INLET PLENUM FOR HOOD 4000MM | | | | | | | | 640378 |
| WASH-UP CONTROL PANEL-1 ZONE 60X20X40 CM | 641141 | 641141 | 641141 | 641141 | 641141 | 641141 | 641141 | 641141 |
| WASH-UP CONTROL PANEL-2 ZONES 60X20X40CM | 641142 | 641142 | 641142 | 641142 | 641142 | 641142 | 641142 | 641142 |
| WASH-UP CONTROL PANEL-3 ZONES 60X20X40CM | 641143 | 641143 | 641143 | 641143 | 641143 | 641143 | 641143 | 641143 |
| WASH-UP CONTROL PANEL-4 ZONES 60X20X40CM | 641144 | 641144 | 641144 | 641144 | 641144 | 641144 | 641144 | 641144 |



www.zanussiprofessional.com

Free Manuals Download Website

<http://myh66.com>

<http://usermanuals.us>

<http://www.somanuals.com>

<http://www.4manuals.cc>

<http://www.manual-lib.com>

<http://www.404manual.com>

<http://www.luxmanual.com>

<http://aubethermostatmanual.com>

Golf course search by state

<http://golfingnear.com>

Email search by domain

<http://emailbydomain.com>

Auto manuals search

<http://auto.somanuals.com>

TV manuals search

<http://tv.somanuals.com>