

**User
manual**

**Washer-
dryer**



ZKH 2105

Thank you for selecting our appliance

We wish you lots of enjoyment with your new appliance and we hope that you will consider our brand again when purchasing household appliances.
Please read this user manual carefully and keep it throughout the product life cycle as a reference document. The user manual should be passed on to any future owner of the appliance.

The following symbols are used in this manual:



Important information concerning your personal safety and information on how to avoid damaging the appliance.



General information and tips



Environmental information

Content

Safety information	-----3	Drying	-----19
Description of the appliance	-----5	Drying programmes	-----21
Detergent dispenser drawer	-----5	Care and cleaning	-----22
Control panel and functions	-----6-8	Something not working	-----25
Programme table	-----9-10	Technical data	-----29
Programme information	-----11	Consumption values	-----30
Washing and drying hints	-----12	Installation instruction	-----31
Before the first use	-----15	Fitting under a counter	-----34
Operating Sequence	-----15	Environmental concerns	-----35
Washing	-----15		

Safety information

In the interest of your safety and to ensure the correct use, before installing and first using the appliance, read this user manual carefully, including its hints and warnings. To avoid unnecessary mistakes and accidents, it is important to ensure that all people using the appliance are thoroughly familiar with its operation and safety features. Save these instructions and make sure that they remain with the appliance if it is moved or sold, so that everyone using it through its life will be properly informed on appliance use and safety.

General safety

- It is dangerous to alter the specifications or attempt to modify this product in any way.
- During high temperature washing and drying programmes the door glass may get hot. Do not touch it!
- Make sure that small pets do not climb into the drum. To avoid this, please check into the drum before using.
- Any objects such as coins, safety pins, nails, screws, stones or any other hard, sharp material can cause extensive damage and must not be placed into the machine.
- Only use the advised quantities of fabric softener and detergent. Damage to the fabric can ensue if you over-fill. Refer to the manufacturer's recommendations of quantities.
- Wash small items such as socks, laces, washable belts etc in a washing bag or pillow case as it is possible for such items to slip down between the tub and the inner drum.
- Do not use your washer-dryer to wash articles with whalebones, material without hems or torn material.
- Always unplug the appliance and turn off the water supply after use, clean and maintenance.
- Under no circumstances should you attempt to repair the machine yourself. Repairs carried out by inexperienced persons may cause injury or serious malfunctioning. Contact your local Service Centre. Always insist on genuine spare parts.

Installation

- This appliance is heavy. Care should be taken when moving it.
- When unpacking the appliance, check that it is not damaged. If in doubt, do not use it and contact the Service Centre.
- All packing and transit bolts must be removed before use. Serious damage can occur to the product and to property if this is not adhered to. See relevant section in the user manual.
- After having installed the appliance, check that it is not standing on the inlet and drain hose and the worktop is not pressing the electrical supply cable.
- If the machine is situated on a carpeted floor, please adjust the feet in order to allow air to circulate freely.
- Always be sure, that there is no water leakage from hoses and their connections after the installation.
- If the appliance is installed in a location subject to frost, please read the «**dangers of freezing**» chapter.
- Any plumbing work required to install this appliance should be carried out by a qualified plumber or competent person.
- Any electrical work required to install this appliance should be carried out by a qualified electrician or competent person.

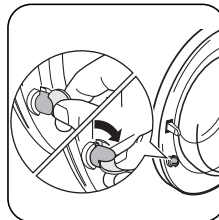
Use

- This appliance is designed for domestic use. It must not be used for purposes other than those for which it was designed.
- Only wash and dry fabrics which are designed to be machine washed and dried. Follow the instructions on each garment label.
- Do not overload the appliance. See the relevant section in the user manual.
- Before washing, ensure that all pockets are empty and buttons and zips are fastened. Avoid washing frayed or torn articles and treat stains such as paint, ink, rust, and grass before washing. Underwired bras must NOT be machine washed.
- Garments which have been in contact with volatile petroleum products should not be machine washed. If volatile cleaning fluids are used, care should be taken to ensure that the fluid is removed from the garment before placing in the machine.
- As some duvets and eiderdowns should be washed/dried in large commercial machines because of their bulk, please check with the manufacturer of the item before washing in a domestic machine.
- The users should always check that they have not left their gas lighters (disposable or otherwise) in their clothing.
- Never dry items that have had contact with chemicals such as dry cleaning fluid. These are of a volatile nature and could cause an explosion.
- Only tumble dry items which have been washed in water or require airing.
- Plastic detergent dispensers should not remain in the drum during the drying cycle, as the plastic used is not designed to withstand the heat. If you wish to wash-through-to-dry you should use the conventional detergent dispenser drawer.

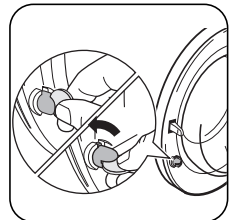
- Never pull the power supply cable to remove the plug from the socket; always take hold of the plug itself.
- Never use the washer-dryer if the power supply cable, the control panel, the working surface or the base are damaged so that the inside of the washer-dryer is accessible.

Child safety

- This appliance is not intended for use by person (including children) with reduced physical sensory or mental capabilities or lack of experience and knowledge unless they have been given supervision or instruction concerning use of the appliance by a person responsible for their safety.
- Young children should be supervised to ensure that they do not play with the appliance.
- The packaging components (e.g. plastic film, polystyrene) can be dangerous to children - danger of suffocation! Keep them out of children's reach
- Keep all detergents in a safe place out of children's reach.
- Make sure that children or pets do not climb into the drum. To avoid this the machine incorporates special feature.



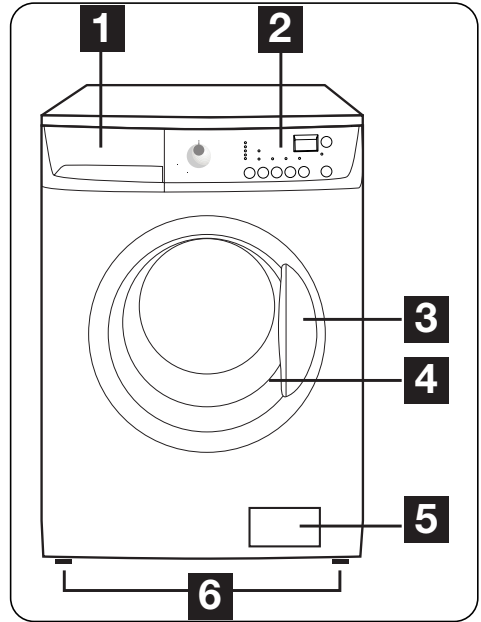
To **activate** this device, rotate the button (without pressing it) inside the door clockwise until the groove is horizontal. If necessary use a coin.



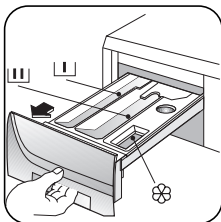
To **disable** this device and restore the possibility of closing the door, rotate the button anti-clockwise until the groove is vertical.

Description of the appliance

- 1** Detergent dispenser drawer
- 2** Control panel
- 3** Door opening handle
- 4** Rating plate
- 5** Drain pump
- 6** Adjustable feet



Detergent dispenser drawer

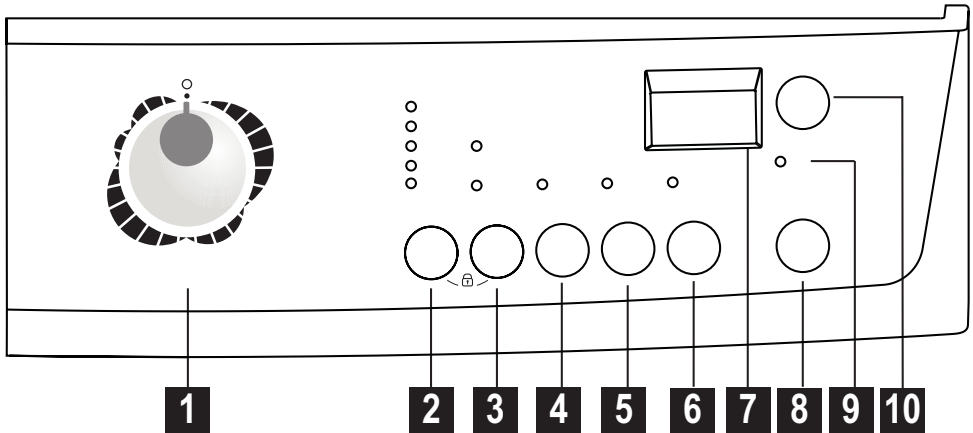


 Prewash

 Wash

 Fabric Softener

Control panel and functions



i Infos

Henceforth, the programme selector dial, the different buttons and the programme progress display will be indicated in all the book with the relevant numbers given in the table above.

Programme selector dial and Control Panel symbols:

= White/Coloured cottons, = Prewash, = Synthetics, = Easy Iron,
 = Delicates, = Handwash, = Cold Wash, = Jeans, = Sport Intensive, = Drying,
 = Rinsing, = Draining, = Spinning, = Rinse Hold option, = Child safety lock,
 = Store Dry, = Iron Dry.

<p>1 Programme selector dial and On/Off switch</p>	<ul style="list-style-type: none"> The programme selector dial allows to select a programme and/or to switch the machine on/off. It can be turned either clockwise or anticlockwise. The light of the button 8 starts to flash.
<p>2 Spin reduction button</p>	<ul style="list-style-type: none"> Press this button repeatedly to change the spin speed, if you want your laundry to be spun at a speed different from the one proposed by the washer-dryer or to select the «Rinse Hold» option. The relevant light will light up.

3 Automatic Drying button	<ul style="list-style-type: none"> ● By means of this button you can choose the required degree of drying for cottons and synthetics between: Cupboard dry (cottons and synthetics) and Iron dry (cottons). The corresponding pilot light illuminates.
4 Drying Time button	<ul style="list-style-type: none"> ● By depressing this button you can select a timed programme for cotton or synthetics, the relevant phase light illuminates.
5 Super Quick button	<ul style="list-style-type: none"> ● With this option it is possible to reduce the washing time for lightly soiled laundry.
6 Extra Rinse button	<ul style="list-style-type: none"> ● By means of this button, the machine performs some additional rinses.
7 Display	<ul style="list-style-type: none"> ● The display shows the following information: duration of the selected programme, selected drying time, incorrect option selection, alarm codes, child safety lock and end of programme.
8 Start/Pause button	<ul style="list-style-type: none"> ● This button allows to start the selected programme; the corresponding green pilot light stops flashing. ● This button interrupts also a programme which is running, the corresponding green pilot light starts to flash.
9 Door locked light	<ul style="list-style-type: none"> ● This light indicates when it is possible to open the door.
10 Delay Start button	<ul style="list-style-type: none"> ● With this function, the wash programme can be delayed up to 20 hours to a more convenient for you time.

Functions

Rinse hold (Button 2)

By selecting this option, the machine will not drain the water of the last rinse to prevent the fabrics from creasing.

When the programme has finished, the light of the button **8** goes off and the light **9** illuminates. The door is locked to indicate that the water must be emptied out.

To empty out the water see chapter «At the end of the programme».

«Automatic drying» (Button 3)

By means of this button you can choose the required degree of drying for cottons and synthetics between: Cupboard dry (cottons and synthetics) and Iron dry (cottons). The corresponding pilot light illuminates.

The drying time is automatically adjusted by the machine: the laundry will be dried to the selected degree of dryness.

Drying Time button (Button 4)

By depressing this button you can select a timed programme for cotton or synthetics. The relevant light illuminates.

For **Cottons** and **Synthetics** you can select a drying time from 10 minutes to 250 minutes (4.10). Every time you press the button the time increases by 5 mins.

Note!

The programme time will automatically increase by up to 2 minutes. This is quite normal.

«Super Quick» (Button 5)

Short cycle for lightly soiled items or for laundry that have been used or worn for a short time and needs only freshening up.

We recommend you to reduce the fabrics loading.

The washing time will be reduced according to the type of fabric and the selected temperature.

«Extra rinse» (Button 6)

The machine performs some additional rinses during the washing cycle. This option is recommended for people who are allergic to detergents, and in areas where the water is very soft.

«Start/Pause» (Button 8)

This button allows to start the selected programme; the corresponding green pilot light stops flashing. This button interrupts also a programme which is running, the corresponding green pilot light starts to flash.

«Door locked» light (9)

This light illuminates after pressing button **8**. The light **9** indicates when the door can be opened:

- light on: the door is locked and cannot be opened. The washing or the drying cycle starts working and the door is locked.
- light off: the door can be opened. The washing programme has finished.

If there is water left in the tub, the light **9** remains lit. The door will be still locked and it will be necessary to empty out before opening the door.

To empty out the water see chapter «At the end of the programme».

«Delay start» (Button 10)

The wash programme can be delayed from 30 min - 60 min - 90 min, 2 hours and then by 1 hour up to a maximum of 20 hours.

The Delay start cannot be selected with «Drain» programme.



Programme table

Programme/ Temperature	Type of laundry	Options	Description of programme
Cottons 90° - 60°	White cotton (heavy soiled cotton items)	Spin reduction / Rinse Hold Super Quick, Extra rinse	Main wash, Rinses, Long spin at the maximum speed Max load: 7 kg Reduced load: 3.5 kg
Cottons 60° Eco	White and fast colour cotton (normally soiled cotton items)	Spin reduction / Hold Extra rinse	Main wash, Rinses, Long spin at the maximum speed, Max load: 7 kg, Reduced load: 3.5 kg
Cottons 40° - 30°	White and colour cotton (lightly soiled cotton items)	Spin reduction / Rinse Hold Super Quick, Extra rinse	Main wash, Rinses, Long spin at the maximum, Max load: 7 kg, Red. load: 3.5 kg
Cotton 90° + Prewash	White cotton (white cotton items heavily soiled)	Spin reduction / Rinse Hold Super Quick, Extra rinse	Prewash, Main wash, Rinses, Long spin at the maximum speed, Max load: 7 kg, Red. load: 3.5 Kg
Cotton 60° + Prewash	White cotton and fast colour cotton (cotton items normally soiled)	Spin reduction / Rinse Hold Super Quick, Extra rinse	Prewash, Main wash Rinses, Long spin at the maximum speed, Max load: 7 kg, Red. load: 3.5
Cotton 40° + Prewash	Cotton colour (cotton colour items normally soiled)	Spin reduction / Rinse Hold Super Quick, Extra rinse	Prewash, Main wash Rinses, Long spin at the maximum speed, Max load: 7 kg, Red.load: 3.5 Kg
Synthetics 60° - 40° - 30°	Synthetic or mixed fabrics,	Spin reduction / Rinse Hold Super Quick, Extra rinse	Main wash, Rinses Short spin Max load: 3.5 kg Reduced load: 2 kg
Synthetics Easy iron 40°	Synthetic or mixed fabrics to be gentle washed and spun.	Spin reduction / Rinse Hold Extra rinse	Main wash Rinses Short spin Max load: 1 kg

Programme table

Programme/ Temperature	Type of laundry	Options	Description of programme
Delicates 40° - 30°	Delicate fabrics , for example curtains.	Spin reduction / Rinse Hold Super Quick, Extra rinse	Main wash, Rinses Short spin Max load: 3.5 kg Reduced load: 2 kg
Handwash 40° - 30° - Cold	Special programme for hand washing fabrics	Spin reduction / Rinse Hold	Main wash, Rinses Short spin Max load: 2 kg
Jeans 40°	Special programme for jeans or dark colours cotton items	Spin reduction / Rinse Hold	Main Wash, Rinses, Long spin, Max load: 3.5 kg
Sport Intensive 40°	Special programme for sport items heavily soiled	Spin reduction / Rinse Hold, Extra rinse	Prewash, Main wash, Rinses, Short spin, Max load: 3 kg
Rinses	Separate rinse cycle for hand washed cotton items.	Spin reduction / Rinse Hold, Extra rinse	3 rinses, Long spin at the maximum speed, Max load: 7 kg
Drain	For emptying out the last rinse water in programmes with the Rinse Hold option.		Draining of water
Spin	Separate spin for cottons.	Spin red.	Drain and long spin at the maximum speed
O	To interrupt a running programme, to cancel an incorrect option selection or to switch the machine off,		

Programme information

Eco programme	This programme can be selected for slightly or normally soiled cotton items. The temperature will decrease and the washing time will be extended. This allows to obtain a good washing efficiency by saving energy.
(Wool) Handwash	Washing programme for machine washable wool as well as for hand washable woollens and delicate fabrics with the «hand washing» care symbol  .
Jeans	With this programme it is possible to wash free time items as pants, shirts or jackets in Jeans and also jersey made of hi-tech materials. Some extra rinses will be carried out by the machine.
Easy Iron	Selecting this programme, the laundry is gently washed and spun to avoid any creasing. In this way ironing is easier. Furthermore the machine will perform additional rinses.
Sport intensive	This programme is suitable for washing heavily soiled sport items. The machine will add automatically a prewash phase before the main wash to eliminate mud stains. The washing temperature is 40°C. The maximum spin speed is reduced. We recommend you NOT to put detergent in the compartment marked by the symbol  (Prewash).
Rinses	With this programme it is possible to rinse and spin cotton garments which have been washed by hand. The machine performs 3 rinses, followed by a final spin at maximum speed. The spin speed can be reduced by pressing button 2 .
Drain	For emptying out the water of the last rinse in programmes with the Rinse Hold option. Turn first the programme selector dial to « O », then select programme Drain and press 8 .
Spin	Separate spin for hand washed garments and after programmes with Rinse Hold option. Before selecting this programme the selector dial must be turned to « O ». You can choose the speed by means of the relevant button to adapt it to the fabrics to be spun.
O = Cancelling/Off	To reset a programme and to switch off the machine turn the selector dial to « O ». Now can a new programme be selected.

Washing and drying hints

Sorting the laundry

Follow the wash code symbols on each garment label and the manufacturer's washing instructions. Sort the laundry as follows: whites, coloureds, synthetics, delicates, woollens.

Temperatures

90° or 95°	for normally soiled white cottons and linen (e.g. tea cloths, towels, tablecloths, sheets...)
50°/60°	for normally soiled, colour fast garments (e.g. shirts, night dresses, pyjamas....) in linen, cotton or synthetic fibres and for lightly soiled white cotton (e.g. underwear).
30°-40°-Cold	for delicate items (e.g. net curtains), mixed laundry including synthetic fibres and woollens bearing the label «pure new wool, machine washable, non-shrink».

Before loading the laundry

Never wash whites and coloureds together. Whites may lose their «whiteness» in the wash.

New coloured items may run in the first wash; they should therefore be washed separately the first time.

Make sure that no metal objects are left in the laundry (e.g. hair clips, safety pins, pins). Button up pillowcases, close zip fasteners, hooks and poppers. Tie any belts or long tapes.

Remove persistent stains before washing. Rub particularly soiled areas with a special detergent or detergent paste.

Treat curtains with special care. Remove hooks or tie them up in a bag or net.

Avoid drying dark clothes with light coloured fluffy items such as towels as these can attract the fluff.

Remove the laundry when the appliance has finished drying.

To avoid a static charge when drying is completed, use either a fabric softener when you are washing the laundry or a fabric conditioner specifically for tumble dryers.

Particularly delicate items such as synthetic curtains, woollen and silk, garments with metal inserts, nylon stockings, bulky garments such as anoraks, bedcovers, quilts, sleeping bags and duvets must not be machine dried.

Garments padded with foam-rubber or materials similar to foam-rubber must not be machine dried; they represent a fire hazard.

Also, fabrics containing residues of setting lotions or hair sprays, nail solvents or similar solutions must not be machine dried in order to avoid the formation of harmful vapours.

For drying, follow the indications given on the manufacturer's labels.

For drying, follow the indications given on the manufacturer's labels.

- May be tumble dried
- Drying at high temperature
- Drying at reduced temperature
- Do not tumble dry

IMPORTANT!

As a dryer, the machine works on the condensation principle.

Therefore, the water tap must be open and the drain hose must drain water into a sink or into the drain pipe, even during the drying cycle.

Maximum loads

Recommended loads are indicated in the programme charts.

General rules:

Cotton, linen: drum full but not too tightly packed;

Synthetics: drum no more than half full;

Delicate fabrics and woollens: drum no more than one third full.

Washing a maximum load makes the most efficient use of water and energy.

For heavily soiled laundry, reduce the load size.

Laundry weights

The following weights are indicative:

bathrobe	1200 g
napkin	100 g
quilt cover	700 g
sheet	500 g
pillow case	200 g
tablecloth	250 g
towelling towel	200 g
tea cloth	100 g
night dress	200 g
ladies' briefs	100 g
man's work shirt	600 g
man's shirt	200 g
man's pyjamas	500 g
blouse	100 g
men's underpants	100 g

Removing stains

Stubborn stains may not be removed by just water and detergent. It is therefore advisable to treat them prior to washing.

Blood: treat fresh stains with cold water. For dried stains, soak overnight in water with a special detergent then rub in the soap and water.

Oil based paint: moisten with benzine stain remover, lay the garment on a soft cloth and dab the stain; treat several times.

Dried grease stains: moisten with turpentine, lay the garment on a soft surface and dab the stain with the fingertips and a cotton cloth.

Rust: oxalic acid dissolved in hot water or a rust removing product used cold. Be careful with rust stains which are not recent since the cellulose structure will already have been damaged and the fabric tends to hole.

Mould stains: treat with bleach, rinse well (whites and fast coloureds only).

Grass: soap lightly and treat with bleach (whites and fast coloureds only).

Ball point pen and glue: moisten with acetone (*), lay the garment on a soft cloth and dab the stain.

Lipstick: moisten with acetone as above, then treat stains with methylated spirits. Remove any residual marks from white fabrics with bleach.

Red wine: soak in water and detergent, rinse and treat with acetic or citric acid, then rinse. Treat any residual marks with bleach.

Ink: depending on the type of ink, moisten the fabric first with acetone (*), then with acetic acid; treat any residual marks on white fabrics with bleach and then rinse thoroughly.

Tar stains: first treat with stain remover, methylated spirits or benzine, then rub with detergent paste.

(*) do not use acetone on artificial silk.

Detergents and additives

Good washing results also depend on the choice of detergent and use of the correct quantities to avoid waste and protect the environment. Although biodegradable, detergents contain substances which, in large quantities, can upset the delicate balance of nature.

The choice of detergent will depend on the type of fabric (delicates, woollens, cottons,

etc.), the colour, washing temperature and degree of soiling.


All commonly available washer-dryer detergents may be used in this appliance:


- powder detergents for all types of fabric,
- powder detergents for delicate fabrics (60°C max) and woollens,
- liquid detergents, preferably for low temperature wash programmes (60°C max) for all types of fabric, or special for woollens only.

The detergent and any additives must be placed in the appropriate compartments of the dispenser drawer before starting the wash programme.

If using concentrated powder or liquid detergents, a programme **without** prewash must be selected.

The washer-dryer incorporates a recirculation system which allows an optimal use of the concentrated detergent.

Pour liquid detergent into the dispenser drawer compartment marked  **just before** starting the programme.

Any fabric softener or starching additives must be poured into the compartment marked  before starting the wash programme.

Follow the product manufacturer's recommendations on quantities to use and **do not exceed the «MAX» mark in the detergent dispenser drawer.**

Quantity of detergent to be used

The type and quantity of detergent will depend on the type of fabric, load size, degree of soiling and hardness of the water used.

Water hardness is classified in so-called «degrees» of hardness. Information on hardness of the water in your area can be obtained from the relevant water supply company, or from your local authority.

Follow the product manufacturers' instructions on quantities to use.

Degrees of water hardness

Follow the product manufacturers' instructions on quantities to use.

Use less detergent if:

- you are washing a small load,
- the laundry is lightly soiled,
- large amounts of foam form during washing.

Level	Characteristic	Degrees	
		German °dH	French °T.H.
1	soft	0-7	0-15
2	medium	8-14	16-25
3	hard	15-21	26-37
4	very hard	> 21	> 37

Before the first use


WARNING!

Ensure that the electrical and water connections comply with the installation instructions.

IMPORTANT!

Remove the polystyrene block and any material from the drum.

IMPORTANT!

Pour 2 litres of water into the main wash compartment  of the detergent drawer in order to activate the ECO valve. Then run a cotton cycle at 90°C, without any laundry in the machine, to remove any manufacturing residue from the drum and tub. Pour 1/2 a measure of detergent into the dispenser drawer and start the machine.


Child safety lock

This device permits you to leave the appliance unsupervised without having the worry that children might be injured by or cause damage to the appliance.

This function remains able also when the washer-dryer is not working.

There are two different ways to set this option:

- **before pressing** the button **8**: it will be impossible to start the machine.
- **after pressing** the button **8** it will be impossible to change any other programme or option.

To enable (disable) this option press simultaneously for about 6 seconds **2** and **3** buttons until the icon  appears (disappears) on (from) the display.

Acoustic signals

The machine is provided of an acoustic device, which sounds in the following cases:

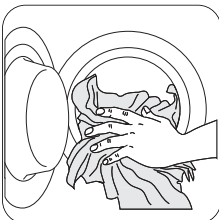
- at the end of the cycle
- in the event of operating problems

By pressing the **4** and **5** buttons simultaneously for about 6 seconds, the acoustic signal is deactivated (except for the events of operating problems).

By pressing these buttons again, the the acoustic signal is reactivated.

Operating sequence

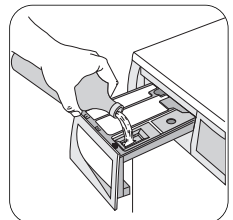
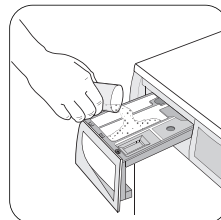
Washing



- 1. Load the laundry**
Open the door by carefully pulling the door handle outwards. Place the laundry in the drum, one item at a time, shaking them out as much as

possible. Close the door.

2. Measure out the detergent and the fabric softener



Pull out the dispenser drawer until it stops. Measure out the amount of detergent required,

pour it into the main wash compartment **III** and, if you wish to carry out a programme with the prewash phase, pour it into the compartment marked **II**.

If required, pour fabric softener into the compartment marked **⊗** (the amount used must not exceed the «MAX» mark in the drawer). Close the drawer gently.

Select the required programme by means of the programme selector dial (1)

Turn the programme selector dial to the required programme. The green light of button **8** starts to flash.

It can be turned either clockwise or anticlockwise. On position «O» the programme is reset and the machine is switched OFF.

At the end of the programme the selector dial must be turned to position «O», to switch the machine off.

IMPORTANT!

If you turn the programme selector dial to another programme when the machine is working, the **red** light will of the button **8** flashes 3 times and the message **Err** is displayed on the display to indicate a wrong selection. The machine will not perform the new selected programme.

Select the spin speed or the Rinse Hold option by pressing button 2

The relevant light will light up. When selecting a programme, the light corresponding to the maximum speed allowed for that programme will illuminate.

Select the degree of dryness or the duration of the drying cycle by means of buttons 3 and 4

The relevant light illuminates.

By depressing the button **3** it is possible to select the degrees of dryness for cotton or synthetics items. The washer dryer will

automatically adjust the duration of the drying cycle to the selected degree.

Also this button allows you to select a drying time for **Cottons** and **Synthetics** from 10 minutes to 250 minutes (4.70). Every time you press this button the time increases by 5 mins.

Select the desired option by means of buttons 5 and 6

Depending on the programme, different functions can be combined. These must be selected after choosing the desired programme and before depressing the button **8**. The corresponding light illuminates.

For more information about the compatibility of the options with the washing programmes, refer to the section «**Programmes table**».

Select the delayed start by pressing the button 10

Depress button this button to select the required delay.

The selected delay time value will appear on the display for few seconds, then the duration of the programme will appear again.

You must select this option after you have set the programme and before you press the button **8**.

You can cancel the delay time at any moment, before you press button **8**.

If you have already pressed it, and you wish to cancel the delay time, proceed as follows:

- set the washing machine to PAUSE by pressing button **8**;
- press the button **10** once. On the display will appear the symbol «D'».
- press button **8** again to start the programme.

IMPORTANT!

- If the programme has already started, the selected delay can be modified only after you have turned the programme selector dial to

the «0» position and after you have selected the programme again.

- The door will be locked throughout the delay time. If you need to open the door, you must first set the washer dryer to PAUSE by pressing button **8**. After you have closed the door, press the same button again.

Note!

The Delay Start cannot be selected with «Drain» programme.

Display

The display shows the following information:

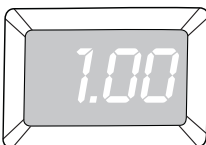
After selecting a programme the **duration of the selected programme** appears in minutes or hours and minutes on the display .(e.g. 2.05)



During the programme, the time remaining is updated every minute.

Selected drying time

After selecting a drying programme programme the drying time is shown in minutes or hours and minutes.



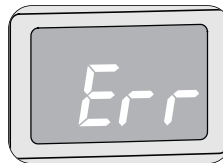
After the programme has started, the time remaining is updated every minute.

The **Delayed start** appears on the display for about 3 seconds, then the duration of the previously selected programme is displayed.



The delay time value decreases by one unit every hour, 90 minutes and then, when 1 hour remain, every minute.

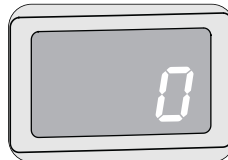
The **incorrect option selection** is indicated by the message **Err** displayed for a few seconds and by flashing of the red light button **8**.



In the event of operating problems, some **alarm codes** can be displayed, (see paragraph "Something not working").



The **End of programme or the stop with water left in the tub** is indicated by a flashing zero «0».



Start the programme by pressing button **8**

To start the selected programme, press this button; the corresponding green pilot light stops flashing.

The pilot light **9** illuminates to indicate that the appliance starts operating and the door is locked.

IMPORTANT!

If an option which is not compatible with the set wash programme is selected, the message **Err** is displayed for few seconds and the **red** light of this button flashes for 3 times.

Altering an option or a running programme

It is possible to change any option before the programme carries it out.

Before you make any change, you must pause the washing machine by pressing button **8**.

Changing a running programme is possible only by resetting it. Turn the programme selector dial to «**O**» and then to the new programme position. Start the new programme by pressing button **8** again.

The washing water in the tub will not empty out.

Interrupting a programme

Press button **8** to interrupt a programme which is running, the corresponding light starts to flash. Press the button again to restart the programme.

Cancelling a programme

Turn the selector dial to «**O**» to cancel a programme which is running. Now you can select a new programme.

Opening the door after the programme has started

First set the machine to pause by pressing the button **8**.

If the light **9** goes off, the door can be opened. If it does not go off, this means that the machine is already heating, that the water level is above the bottom edge of the door. In this cases the door cannot be opened.

If you cannot open the door but you need to open it you have to switch the machine off by turning the selector dial to «**O**». The door can be opened after a few minutes.

(Pay attention to the water level and temperature!).

After this procedure, it will be necessary to set the programme and the options again and then to press button **8**.

At the end of the programme

The washer dryer stops automatically. Some acoustic signals sound and on the display will appear a flashing «**U**». The button **8** light and the light **9** go off. The door can be opened.

If, at the end of a programme, there is water in the tub (light **9** still on), **to empty out** the water follow the following instructions:

To empty out the water:

1. turn the programme selector dial to «**O**»
2. select the **Drain**»or «**Spin**» programme
3. reduce the spin speed, if needed, by means of the button **2**
4. press button **8**
5. at the end of the programme, the display shows a flashing zero «**U**», the light **9** goes off and it will be possible to open the door.

Turn the programme selector dial to «**O**» to switch the machine off.

Remove the laundry from the drum and carefully check that the drum is empty.

If you do not intend to carry out another wash, close the water tap.

Leave the door open to prevent the formation of mildew and unpleasant smells.

Stand By: If your laundry is not removed within 10 minutes after the programme is finished, the back light of the display switches off and the energy saving system will be enabled. Only the pilot light of the button **8** is blinking to indicate that the appliance has to be switched off. By pressing any button the appliance will come out from the energy saving status and you can set another programme or switch the appliance off.

Drying

Drying only

The max load to dry in your washer -dryer is 3.5 kg for cotton and 2 kg for synthetics.

Note!

Only with the timed drying, it is possible also to dry up to 5 kg of cotton items (see the drying time table).

The water tap must be open and the drain hose must be positioned in the sink or connected to the drain pipe.

1. Load the laundry.
2. Turn the selector dial to «Cotton» or «Synthetics» programme in the «Drying» sector.
3. For the automatic drying, «**Store dry**» (only for synthetics) or «**Iron dry**», press the button **3** until the light corresponding to the desired dryness degree illuminates.
4. For the timed drying, press the button **4** until the time you want appears on the display (see the drying programmes). Every time you press this button the drying time increases by 5 mins.

Note!

The programme time will automatically increase by up to 2 minutes. This is quite normal.

5. Press button **8** to start the programme. After the programme has started, the time remaining is updated every minute.

Note!

The different type of cottons (towelling, sheets, shirts, and so on) or any laundry items rolling up during the spinning phase may result in partial dryness. In the exceptional case that at the end of the cycle the laundry remains slightly wet, we suggest that you unfold the rolled up items, redistribute them evenly in the drum and select an additional drying cycle of 20-30 minutes.

6. At the end of the programme, the buzzer sounds. A flashing zero «**0**» will appear on the display. At this point, begins the anti-crease phase which lasts for about 10 minutes. During this time the light **9** is alight, the door cannot be opened and the display keeps showing three flashing zeros «**000**». At the end of this phase, the pilot light **9** goes off and the door can be opened.

Note!

If you wish to open the door before or during the anti-crease phase or to interrupt it, press any button or turn the programme selector dial to any programme position (except «**0**»), the door can be immediately opened.

7. Turn the selector dial to the «**0**» position to switch the machine off. Remove the laundry.

Autodrying (NON-STOP programme)

Warning!

For NON-STOP programmes, it is essential not to exceed the maximum load sizes of 3.5 kg for cotton and 2 kg for synthetics.

Note!

Only with the timed drying, it is possible also to dry up to 5 kg of cotton items (see the drying time table).

Do not use a dosing device/ball when carrying out a washing & drying programme.

1. Load the laundry.
2. Add detergent and fabric softener.
3. Switch the machine on by turning the selector dial to the selected wash programme/fabric.
4. Select the dryness degree or the drying time by pressing button **3** and **4**. The display shows the entire duration of the washing and the selected drying cycle.
5. Select the required options by means of the relevant buttons. If possible, do not select a spin speed lower than that proposed by the appliance to avoid a too long drying time so saving energy.
In any case the reduction of the spin speed is only possible after selecting drying.
The lowest value **with AUTOMATIC DRYING** is 900 r.p.m. for cottons and synthetics
The lowest value **with TIMED DRYING** you can select is 700 r.p.m. for synthetics
6. Start the programme by pressing button **8**.
7. At the end of the programme, turn the selector dial to the «**O**» position to switch the machine off. Remove the laundry.

Automatic Drying Programmes

Degree of drying	Type of fabric	Drying time mins
Store dry Suitable for items to put away without ironing	Cotton and linen (bathrobes, bath towels, etc)	3.5 kg
	Synthetics and mixed fabrics (jumpers, blouses, underwear, household linen)	2 kg
Iron dry Suitable for ironing	Cotton and linen (sheets, tablecloths, shirts, etc.)	3 kg

Drying Time

Degree of drying	Type of fabric	Max Load	Spin speed	Drying time mins
Suitable for items to put away without ironing	Cotton and linen (bathrobes, bath towels, etc)	5 kg	1000 rpm	195-215
		3,5 kg	1000 rpm	100-110
		1,5 kg	1000 rpm	50-60
	Synthetics and mixed fabrics (jumpers, blouses, underwear, household linen)	2 kg	900 rpm	70-80
		1 kg	900 rpm	35-45
Suitable for ironing	Cotton and linen (sheets, tablecloths, shirts, etc.)	5 kg	1000 rpm	115-130
		3,5 kg	1000 rpm	80-90
		1,5 kg	1000 rpm	45-55

In compliance with EC directive EN 50229 the cotton reference programme for the data entered in the Energy Label must be tested dividing the maximum washing load by two equal parts and drying with TIMED DRYING each of them.

Care and cleaning

IMPORTANT!

You must DISCONNECT the appliance from the electricity supply, before you can carry out any cleaning or maintenance work.

Descaling

The water we use normally contains lime. It is a good idea to periodically use a water softening powder in the machine. Do this separately from any laundry washing, and according to the softening powder manufacturer's instructions. This will help to prevent the formation of lime deposits.

Maintenance Wash

With the use of low temperature washes it is possible to get a build up of residues inside the drum.

We recommend that a maintenance wash be performed on a regular basis.

To run a maintenance wash:

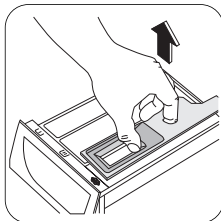
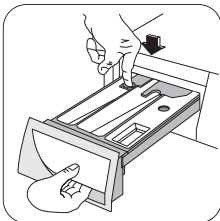
- The drum should be empty of laundry.
- Select the hottest cotton wash programme.
- Use a normal measure of detergent, must be a powder with biological properties.

External cleaning

Clean the exterior cabinet of the appliance with soap and water only, and then dry thoroughly.

Cleaning the dispenser drawer

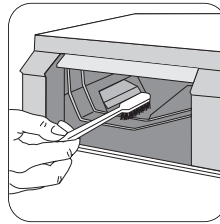
The washing powder and additive dispenser drawer should be cleaned regularly.



To aid cleaning, the top part of the additive compartment should be removed.

Remove the drawer by pressing the catch downwards and by pulling it out. Flush it out under a tap, to remove any traces of accumulated powder.

Cleaning the drawer recess



Having removed the drawer, use a small brush to clean the recess, ensuring that all washing powder residue is removed from the upper and lower

part of the recess.

Replace the drawer and run the rinse programme without any clothes in the drum.

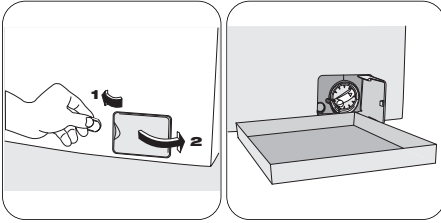
Cleaning the pump

The pump should be inspected if

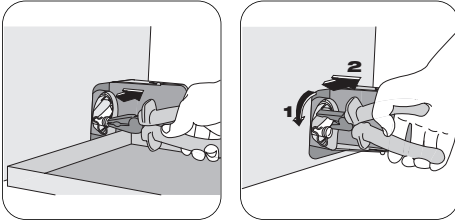
- the machine does not empty and/or spin
- the machine makes an unusual noise during draining due to objects such as safety pins, coins etc. blocking the pump.

Proceed as follows:

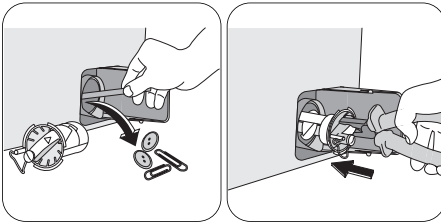
- disconnect the appliance.
- if the appliance is operating, wait, if necessary, until the water has cooled down.
- open the pump door levering on the groove with a coin (or with the suitable tool, that you can find in the bag containing the instruction booklet depending on the model).
- place a bowl with a small edge close to the pump to collect any spillage



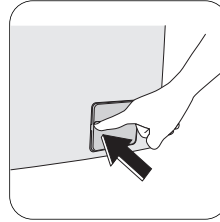
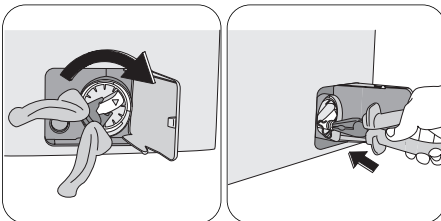
- pull out the emergency emptying cap from the filter cover, using a pliers.
- when no more water comes out, unscrew the pump cover, using a pliers, and remove the filter. Always keep a rag nearby to dry up spillage of water when removing the cover.



- Remove any objects from the pump impeller by rotating it.



- replace the emergency emptying cap into the filter cover and fix it firmly.



- Close the pump door.

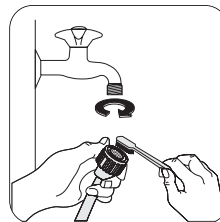
IMPORTANT!

When the appliance is in use and depending on the programme selected there can be hot water in the pump. Never remove the pump cover during a wash cycle, always wait until the appliance has finished the cycle, and is empty. When replacing the cover, ensure it is securely retightened so as to stop leaks and young children being able to remove it.

Cleaning the water inlet filter

If your water is very hard or contains traces of lime deposit, the water inlet filter may become clogged.

It is therefore a good idea to clean it from time to time.



Turn off the water tap. Unscrew the water inlet hose. Clean the filter using a hard bristle brush. Tighten up the inlet hose.

The dangers of freezing

If the machine is exposed to temperatures below 0°C, certain precautions should be taken:

- pull out the plug from the power socket;

- turn off the water tap.
- unscrew the inlet hose.
- place a bowl with a small edge close to the pump to collect any spillage from the emergency emptying hose.
Place the end of the inlet hose in a bowl placed on the floor and let water drain out.
- screw the water inlet hose back on and reposition the emergency emptying cap on again into the filter cover.
- when you intend to start the machine up again, make sure that the room temperature is above 0°C.

IMPORTANT!

Every time you drain the water through the emergency emptying hose you must pour 2 litres of water into the main wash compartment of the detergent drawer and then run the drain programme. This will activate the **ECO VALVE** device avoiding that part of the detergent remains unused at next washing.

Emergency emptying out

If the water is not discharged, proceed as follows to empty out the machine:

- pull out the plug from the power socket;
- close the water tap;
- if necessary, wait until the water has cooled down;
- open the pump door using the suitable tool;
- place a bowl with a small edge close to the pump to collect any spillage. Remove the emergency emptying cap from the filter cover. The water should drain by gravity into the bowl. When the bowl is full, put the cap back on filter cover. Empty the bowl. Repeat the procedure until water stops flowing out;
- clean the pump if necessary as previously described;
- replace the filter into the pump and screw it firmly as previously described;
- replace the emergency emptying cap into the filter cover and close the pump door.

Something not working

IMPORTANT!

Certain problems are due to lack of simple maintenance or oversights, which can be solved easily without calling out an engineer. Before contacting your local Service Centre, please carry out the checks listed below.

During machine operation it is possible that the **red** pilot light of the button **8** flashes, the buzzer sounds and one of the following alarm codes appears on the display to indicate that the machine is not working.

- *E10*: problem with the water supply
- *E20*: problem with water draining
- *E40*: door open.

Once the problem has been eliminated, press the button **8** to restart the programme. If after all checks, the problem persists, contact your local Service Centre.

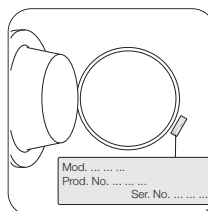
Malfunction	Possible Cause / Solution
<p>The washer-dryer does not start:</p>	<p>The door has not been closed. <i>E40</i></p> <ul style="list-style-type: none"> • Close firmly the door. <p>The plug is not properly inserted in the power socket.</p> <ul style="list-style-type: none"> • Insert the plug into the power socket. <p>There is no power at the socket.</p> <ul style="list-style-type: none"> • Please check your domestic electrical installation. <p>The main fuse has blown.</p> <ul style="list-style-type: none"> • Replace the fuse. <p>The selector dial is not correctly positioned and the button 8 has not been pressed.</p> <ul style="list-style-type: none"> • Please turn the selector dial and press the button 8 again. <p>The Child Safety Lock or the Delay start function option has been selected.</p> <ul style="list-style-type: none"> • Disable the «Child Safety Lock» or the «Delay start» function.
<p>The machine does not fill:</p>	<p>The water tap is closed. <i>E10</i></p> <ul style="list-style-type: none"> • Open the water tap. <p>The inlet hose is squashed or kinked. <i>E10</i></p> <ul style="list-style-type: none"> • Check the inlet hose connection. <p>The filter in the inlet hose is blocked. <i>E10</i></p> <ul style="list-style-type: none"> • Clean the water inlet hose filter. <p>The door is not properly closed. <i>E40</i></p> <ul style="list-style-type: none"> • Close firmly the door.

Malfunction	Possible Cause / Solution
The machine fills then empties immediately:	<p>The end of the drain hose is too low.</p> <ul style="list-style-type: none"> Refer to relevant paragraph in «water drainage» section.
The machine does not empty and/or does not spin:	<p>The drain hose is squashed or kinked. <i>E20</i></p> <ul style="list-style-type: none"> Check the drain hose connection. <p>The drain pump is clogged. <i>E20</i></p> <ul style="list-style-type: none"> Clean the drain pump. <p>The Rinse Hold option has been selected.</p> <ul style="list-style-type: none"> Select the Drain or Spin programmes <p>The laundry is not evenly distributed in the drum.</p> <ul style="list-style-type: none"> Redistribute the laundry.
There is water on the floor:	<p>Too much detergent or unsuitable detergent (creates too much foam) has been used.</p> <ul style="list-style-type: none"> Reduce the detergent quantity or use another one. <p>Check whether there are any leaks from one of the inlet hose fittings. It is not always easy to see this as the water runs down the hose; check to see if it is damp.</p> <ul style="list-style-type: none"> Check the water inlet hose connection. <p>The inlet hose is damaged.</p> <ul style="list-style-type: none"> Change it with a new one. <p>The cap on the emergency emptying hose has not been replaced after cleaning the pump.</p> <ul style="list-style-type: none"> Put the cap back on the emergency emptying and place the latter back in its seat.
Unsatisfactory washing results:	<p>Too little detergent or unsuitable detergent has been used.</p> <ul style="list-style-type: none"> Increase the detergent quantity or use another one. <p>Stubborn stains have not been treated prior to washing.</p> <ul style="list-style-type: none"> Use commercial products to treat the stubborn stains. <p>The correct temperature was not selected.</p> <ul style="list-style-type: none"> Check if you have selected the correct temperature. <p>Excessive laundry load.</p> <ul style="list-style-type: none"> Introduce into the drum less laundry.

Malfunction	Possible Cause / Solution
<p>The door will not open:</p>	<p>The programme is still running.</p> <ul style="list-style-type: none"> • Wait the end of washing cycle. <p>The door lock has not been released.</p> <ul style="list-style-type: none"> • Wait until the light 9 has gone off. <p>There is water in the drum.</p> <ul style="list-style-type: none"> • Select drain or spin programme to empty out the water.
<p>The machine vibrates or is noisy:</p>	<p>The transit bolts and packing have not been removed.</p> <ul style="list-style-type: none"> • Check the correct installation of the appliance. <p>The support feet have not been adjusted.</p> <ul style="list-style-type: none"> • Check the correct levelling of the appliance. <p>The laundry is not evenly distributed in the drum.</p> <ul style="list-style-type: none"> • Redistribute the laundry. <p>Maybe there is very little laundry in the drum.</p> <ul style="list-style-type: none"> • Load more laundry.
<p>Spinning starts late or the machine does not spin:</p>	<p>The electronic unbalance detection device has cut in because the laundry is not evenly distributed in the drum. The laundry is redistributed by reverse rotation of the drum. This may happen several times before the unbalance disappears and normal spinning can resume. If, after 10 minutes, the laundry is still not evenly distributed in the drum, the machine will not spin. In this case, redistribute the load manually and select the spin programme.</p> <ul style="list-style-type: none"> • Redistribute the laundry.
<p>The machine makes an unusual noise</p>	<p>The machine is fitted with a type of motor which makes an unusual noise compared with other traditional motors. This new motor ensures a softer start and more even distribution of the laundry in the drum when spinning, as well as increased stability of the machine.</p>

Malfunction	Possible Cause / Solution
<p>The machine does not dry or does not dry properly</p>	<p>The drying time has not been selected.</p> <ul style="list-style-type: none"> • Select the drying time. <p>The water tap is not turned on (E1D)</p> <ul style="list-style-type: none"> • Open the water tap. <p>The drain filter is clogged (E2D)</p> <ul style="list-style-type: none"> • Clean the drain filter. <p>The machine is overloaded.</p> <ul style="list-style-type: none"> • Introduce into the drum less laundry. <p>The selected drying programme or time/degree was not suitable for the laundry.</p> <ul style="list-style-type: none"> • Select the suitable drying programme or time/degree for the laundry.
<p>No water is visible in the drum</p>	<p>Machines based on modern technology operate very economically using very little water without affecting performance.</p>

If you are unable to identify or solve the problem, contact our service centre. Before telephoning, make a note of the model, serial number and purchase date of your machine: the Service Centre will require this information.



Technical data

Dimensions	Width	60 cm
	Height	85 cm
	Depth (including the porthole)	63 cm
Electrical connection Voltage - Overall power - Fuse	Information on the electrical connection is given on the rating plate on the inner edge of the appliance door	
Water supply pressure	Minimum	0,05 MPa
	Maximum	0,8 MPa
Maximum Washing Load	Cotton	7 kg
Maximum Drying Load	Cotton Big Capacity	5 kg
	Cotton	3.5 kg
	Synthetics	2 kg
Spin Speed	Maximum	1000 rpm

Consumption values

Programme	Programme duration (in minutes)	Energy consumption (in kWh)	Water consumption (in litres)
Cottons 90°C	For the duration of the programmes, please refer to the display on the control panel	2.1	65
Cottons 60° Eco(*)		1.19	59
Cottons 40°C		0.77	60
Cottons 60° + Prewash		1.6	75
Synthetics 60°C		1.05	57
Delicates 40°C		0.6	63
Handwash 40°C		0.4	55

Information

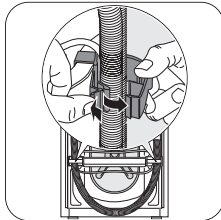
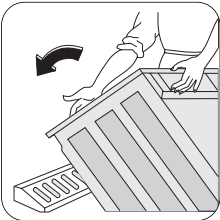
The consumption data shown on this chart is to be considered purely indicative, as it may vary depending on the quantity and type of laundry, on the inlet water temperature and on the ambient temperature. It refers to the highest temperature for each wash programme.

(*) The “Cottons 60° Eco” is the reference programme with a load of 7 kg for the data entered in the energy label, in compliance with EEC 92/75 standards.

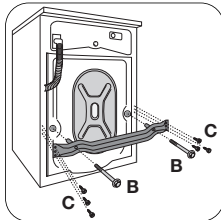
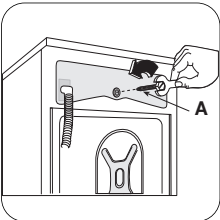
Installation instruction

Unpacking

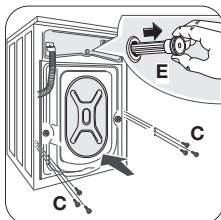
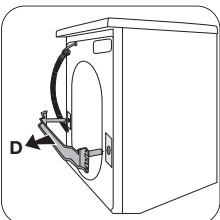
All transit bolts and packing must be removed before using the appliance. You are advised to keep all transit devices so that they can be refitted if the machine ever has to be transported again.



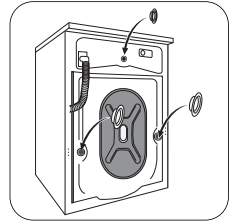
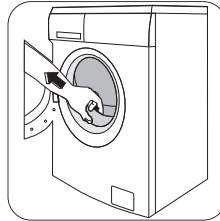
1. After removing all the packaging, carefully lay machine on it's back to remove the polystyrene base from the bottom.
2. Remove the power supply cable and the draining hose from the hose holders on the rear of the appliance.



3. With a suitable spanner unscrew and remove the central rear bolt **A**.
4. Unscrew and remove the two large rear bolts **B** and the six smaller bolts **C**.



5. Remove the bracket **D**, refit the six smaller bolts **C** and slide out the relevant plastic spacer **E**.



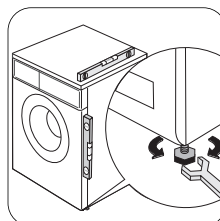
6. Open the porthole, take out the inlet hose from the drum and remove the polystyrene block fitted with the adhesive tape on the door seal. Open the porthole, take out the inlet hose from the drum and remove the polystyrene block fitted with the adhesive tape on the door seal.
7. Fill the smaller upper hole and the two large ones with the corresponding plastic plug caps supplied in the bag containing the instruction booklet.

Positioning

Install the machine on a flat hard floor. Make sure that air circulation around the machine is not impeded by carpets, rugs etc. Check that the machine does not touch the wall or other kitchen units.

Levelling

Level the washer-dryer by raising or lowering the feet. The feet may be tight to adjust as they incorporate a self locking nut, but the machine **MUST** be level and stable.



If necessary, check the setting with a spirit level.

Any necessary adjustment can be made with a spanner. Accurate levelling prevents vibration, noise and displacement of the machine during operation.

Never place cardboard, wood or similar materials under the machine to compensate for any unevenness in the floor.

Some vibration is inevitable, especially if mounted on a wooden floor.

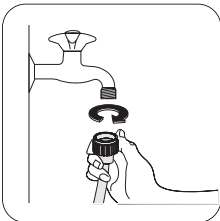
Sprung woden floors are particularly susceptible to vibration. For advice, consult a builder. If possible, always place the machine on a solid floor.

Water inlet

Warning

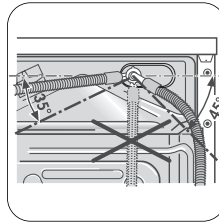
This appliance must be connected to a cold water supply.

1. Connect the hose to a tap with a 3/4" thread. Always use the hose supplied with the appliance. The inlet hose must not be lengthened. If it is too short and you do not wish to move the tap, you will have to purchase a new, longer hose specially designed for this type of use.



Do not use the hose from your previous machine to connect to the water supply.

2. The other end of the inlet hose which connects to the machine can be turned as showed in the picture. Do not place the inlet hose downwards. Angle the hose to the left or right depending on the position of your water tap



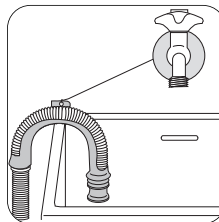
3. Set the hose correctly by loosening the ring nut. After positioning the inlet hose, be sure to tighten the ring nut again to prevent leaks.

IMPORTANT!

Before connecting up the machine to new pipework or to pipework that has not been used for some time, run off a reasonable amount of water to flush out any debris that may have collected in the pipes.

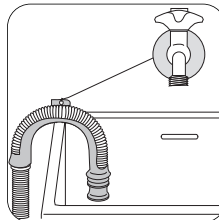
Water drainage

The end of the drain hose can be positioned in three ways:



Hooked over the edge of a sink using the plastic hose guide supplied with the machine. In this case, make sure the end cannot come unhooked when the

machine is emptying. This could be done by tying it to the tap with a piece of string or attaching it to the wall.



In a sink drain pipe branch. This branch must be above the trap so that the bend is at least 60 cm above the ground.

Directly into a drain pipe at a height of not less than 60 cm and not more than 90 cm. The end of the drain hose must always be **ventilated**, i.e. the inside diameter of the drain pipe must be larger than the outside diameter of the drain hose.

The drain hose must not be kinked.

IMPORTANT!

Before connecting the machine to new pipework or to pipework that has not been used for some time, run off a reasonable amount of water to flush out any debris that may have collected in the pipes.

Electrical connection

This machine is designed to operate on a 220-230 V, single-phase, 50 Hz supply.

Check that your domestic electrical installation can take the maximum load required (2.2 kW), also taking into account any other appliances in use.



Caution!

Connect the machine to an earthed socket. The manufacturer declines any responsibility for damage or injury through failure to comply with the above safety precaution.



Caution!

Should the appliance power supply cable need to be replaced, this MUST be carried out by our Service Centre.

NOTE

Please ensure that when the appliance is installed it is easily accessible for the engineer in the event of a breakdown.

Permanent connection

In the case of permanent connection it is necessary that you install a double pole switch between the appliance and the electricity supply (mains), with a minimum gap of 3mm between the switch contacts and of a type suitable for the required load in compliance with the current electrical regulations.

The switch must not break the yellow and green earth cable at any point.

Fitting under a counter

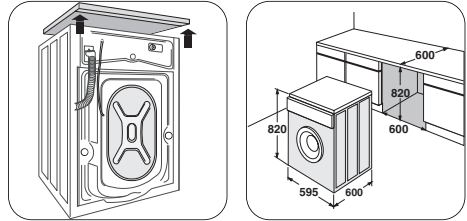
WARNING!

Before any work to the appliance, you must disconnect the plug from the power socket.

Important!


For safety reasons, it is dangerous to fit the appliance under a counter without the steel plate, which you can order in your nearest Service Force Centre.

The top must be fixed to the cabinet as follows: Unscrew the screws from the back panel of the appliance. Push the worktop to the back and raise it to remove. (see the picture below).



Environmental concerns

Packaging materials

The materials marked with the symbol  are recyclable.

>PE<=polyethylene


>PS<=polystyrene

>PP<=polypropylene

This means that they can be recycled by disposing of them properly in appropriate collection containers.

Old machine

Use authorised disposal sites for your old appliance. Help to keep your country tidy!

The symbol  on the product or on its packaging indicates that this product may not be treated as household waste. Instead it shall be handed over to the applicable collection point for the recycling of electrical and electronic equipment. By ensuring this product is disposed of correctly, you will help prevent potential negative consequences for the environment and human health, which could otherwise be caused by inappropriate waste handling of this product. For more detailed information about recycling of this product, please contact your local city office, your household waste disposal service or the shop where you purchased the product.

Ecological hints

To save water, energy and to help protect the environment, we recommend that you follow these tips:

- Normally soiled laundry may be washed without prewashing in order to save detergent, water and time (the environment is protected too!).
- The machine works more economically if it is fully loaded.
- With adequate pre-treatment, stains and limited soiling can be removed; the laundry can then be washed at a lower temperature.
- Measure out detergent according to the water hardness, the degree of soiling and the quantity of laundry being washed.

www.electrolux.com

www.zanussi.es

Free Manuals Download Website

<http://myh66.com>

<http://usermanuals.us>

<http://www.somanuals.com>

<http://www.4manuals.cc>

<http://www.manual-lib.com>

<http://www.404manual.com>

<http://www.luxmanual.com>

<http://aubethermostatmanual.com>

Golf course search by state

<http://golfingnear.com>

Email search by domain

<http://emailbydomain.com>

Auto manuals search

<http://auto.somanuals.com>

TV manuals search

<http://tv.somanuals.com>