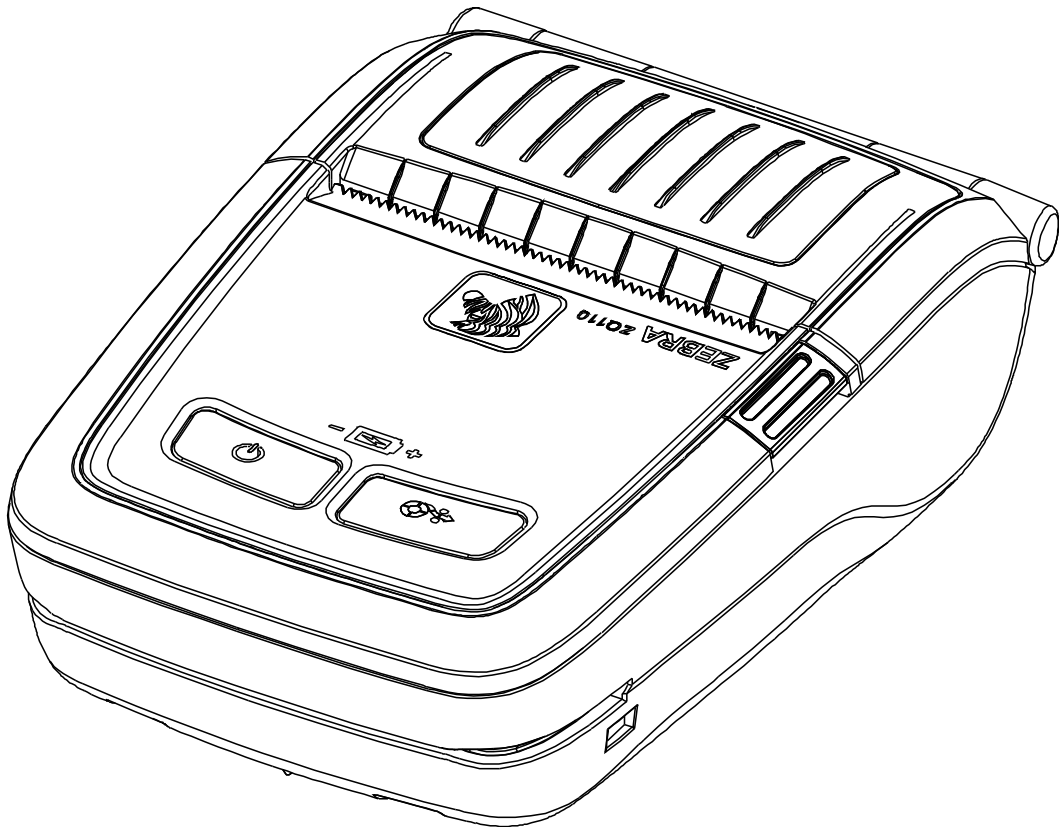




# ZQ110

---

## OPOS Driver Installation Guide



# Table of Contents

<b>1. Manual Information</b> .....	<b>6</b>
<b>2. Development Precondition</b> .....	<b>7</b>
2-1 Features .....	7
2-2 Operating Environment.....	7
2-3 Accessible Devices .....	7
<b>3. Installation</b> .....	<b>8</b>
3-1 Installation.....	8
3-2 Uninstall the OPOS Driver .....	11

## ■ Proprietary Statements

This manual contains proprietary information for Zebra Technologies Corporation. It is intended solely for the information and use of parties operating and maintaining the equipment described herein. Such proprietary information may not be used, reproduced, or disclosed to any other parties for any other purpose without the expressed written permission of Zebra Technologies Corporation.

## Product Improvements

Since continuous product improvement is a policy of Zebra Technologies Corporation, all specifications and signs are subject to change without notice.

## FCC Compliance Statement

NOTE: This equipment has been tested and found to comply with the limits of a Class B digital device, pursuant to Part 15 of the FCC Rules. These limits are designed to provide reasonable protection against harmful interference in a residential installation. This equipment generates, uses and can radiate radio frequency energy and, if not installed and used in accordance with the instructions, may cause harmful interference with radio communications. However, there is no guarantee that interference will not occur in a particular installation. If this equipment does cause harmful interference to radio or television reception, which can be determined by turning the equipment off and on, the user is encouraged to try to correct the interference by one or more of the following measures:

- Reorient or relocate the receiving antenna.
- Increase the separation between the equipment and the receiver.
- Connect the equipment to an outlet or circuit different from that to which the receiver is connected.
- Consult the dealer or an experienced radio/TV technician for help.

WARNING: Exposure to Radio Frequency radiation. To conform to FCC RF exposure requirements this device shall be used in accordance with the operating conditions and instructions listed in this manual.

NOTE: This unit was tested with shielded cables on the peripheral devices. Shielded cables must be used with the unit to ensure compliance.

Changes or modifications to this unit not expressly approved by Zebra Technologies Corporation could void the user's authority to operate this equipment.

**Canadian Compliance Statement**

This Class B digital apparatus complies with Canadian ICES-003.

Cet appareil numérique de la classe B est conforme à la norme NMB-003 du Canada.

“IC:” before the equipment certification number signifies that the Industry Canada technical specifications were met. It does not guarantee that the certified product will operate to the user’s satisfaction.

**Liability Disclaimer**

Inasmuch as every effort has been made to supply accurate information in this manual, Zebra Technologies Corporation is not liable for any erroneous information or omissions. Zebra Technologies Corporation reserves the right to correct any such errors and disclaims liability resulting therefrom.

**No Liability for Consequential Damage**

In no event shall Zebra Technologies Corporation or anyone else involved in the creation, production, or delivery of the accompanying product (including hardware and software) be liable for any damages whatsoever (including, without limitation, damages for loss of business profits, business interruption, loss of business information, or other pecuniary loss) arising out of the use of or the results of use of or inability to use such product, even if Zebra Technologies Corporation has been advised of the possibility of such damages. Because some states do not allow the exclusion of liability for consequential or incidental damages, the above limitation may not apply to you.

**Copyrights**

The copyrights in this manual and the label print engine described therein are owned by Zebra Technologies Corporation. Unauthorized reproduction of this manual or the software in the label print engine may result in imprisonment of up to one year and fines of up to \$10,000 (17 U.S.C.506). Copyright violators may be subject to civil liability.

This product may contain ZPL®, ZPL II®, and ZebraLink™ programs; Element Energy Equalizer® Circuit; E3®; and AGFA fonts. Software © ZIH Corp. All rights reserved worldwide.

ZebraLink and all product names and numbers are trademarks, and Zebra, the Zebra logo, ZPL, ZPL II, Element Energy Equalizer Circuit, and E3 Circuit are registered trademarks of ZIH Corp. All rights reserved worldwide.

Monotype®, Intellifont® and UFST® are trademarks of Monotype Imaging, Inc. registered in the United States Patent and Trademark Office and may be registered in certain jurisdictions.

Andy™, CG Palacio™, CG Century Schoolbook™, CG Triumvirate™, CG Times™, Monotype Kai™, Monotype Mincho™ and Monotype Sung™ are trademarks of Monotype Imaging, Inc. and may be registered in some jurisdictions.

HY Gothic Hangul™ is a trademark of Hanyang Systems, Inc.

Angsana™ is a trademark of Unity Progress Company (UPC) Limited.

Andale®, Arial®, Book Antiqua®, Corsiva®, Gill Sans®, Sorts® and Times New Roman® are trademarks of The Monotype Corporation registered in the United States Patent and Trademark Office and may be registered in certain jurisdictions.

Century Gothic™, Bookman Old Style™ and Century Schoolbook™ are trademarks of The Monotype Corporation and may be registered in certain jurisdictions.

HGP Gothic B™ is a trademark of the Ricoh company, Ltd. and may be registered in some jurisdictions.

Univers™ is a trademark of Heidelberger Druckmaschinen AG, which may be registered in certain jurisdictions, exclusively licensed through Linotype Library GmbH, a wholly owned subsidiary of Heidelberger Druckmaschinen AG.

Futura® is a trademark of Bauer Types SA registered in the United States Patent and Trademark Office and may be registered in some jurisdictions.

TrueType® is a trademark of Apple Computer, Inc. registered in the United States Patent and Trademark Office and may be registered in certain jurisdictions.

All other product names are the property of their respective owners.

All other brand names, product names, or trademarks belong to their respective holders.

©2014 ZIH Corp.

## **1. Manual Information**

The OPOS Driver Installation Guide describes how to use the OPOS Driver program to install, setup, and create applications using the OPOS Driver.

Throughout this manual, “OLE for Retail POS” is called “OPOS” and “Unified for Retail POS” is called “UPOS”.

## 2. Development Precondition

### 2-1 Features

Through these standardized API functions, you can develop powerful, open POS systems easily.

### 2-2 Operating Environment

The table below identifies the supported operating environment for the ZQ110.

<b>Hardware</b>	IBM PC/AT or Compatible
<b>Operating System</b>	Windows XP / Windows 2003 Windows XP Embedded / Windows Vista Windows 7 / Windows 8
<b>Hdd</b>	Recommend 10M bytes free
<b>Memory</b>	Recommend 32M bytes over
<b>USB ports</b>	Windows XP / Windows 2003 Windows XP Embedded / Windows Vista Windows 7 / Windows 8
<b>Supported Languages</b>	Microsoft Visual Basic Version 6.0 Microsoft Visual C++ Version 6.0 Power Builder / Delphi / etc.

### 2-3 Accessible Devices

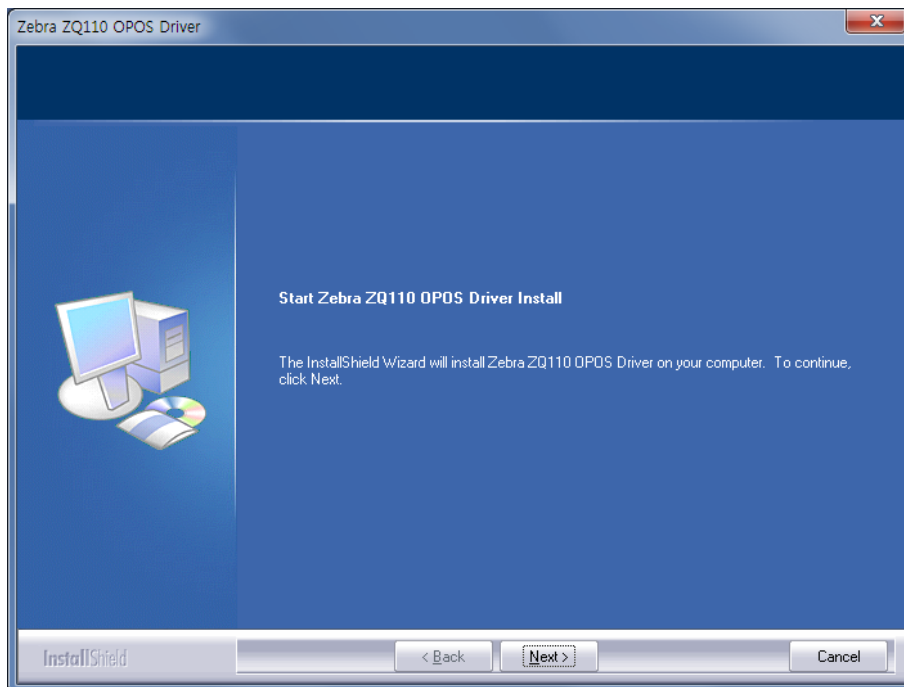
<b>Model</b>	<b>Serial</b>	<b>PARALLEL</b>	<b>USB</b>	<b>Bluetooth</b>	<b>Ethernet</b>	<b>WirelessLAN</b>
<b>ZQ110</b>	Not supported	Not supported	Supported	Supported	Supported	Supported

## 3. Installation

### 3-1 Installation

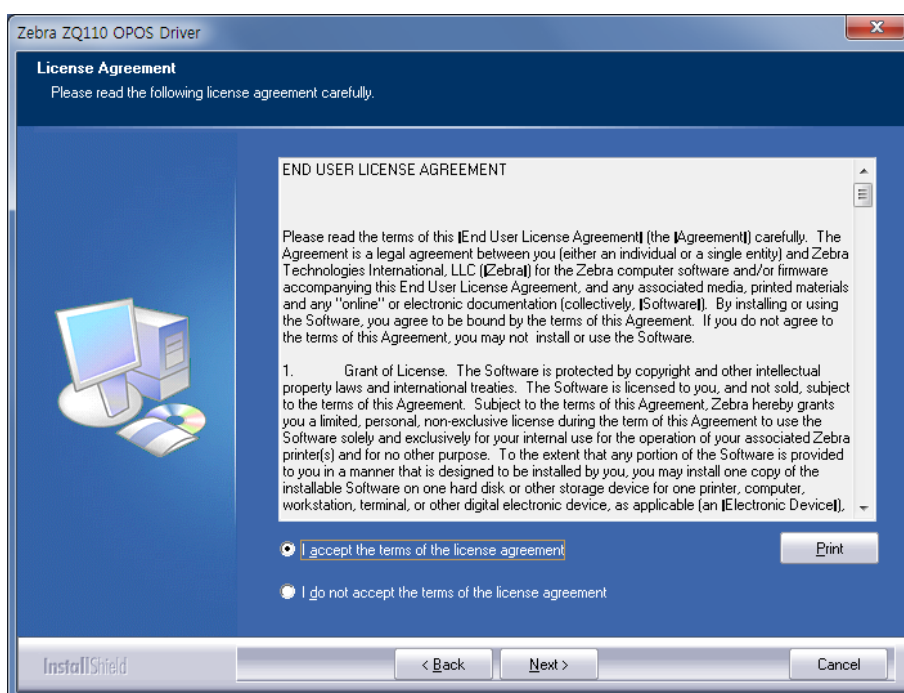
#### 1. Run the setup file: **Zebra ZQ110 OPOS Driver Installer**

The Welcome dialog displays.



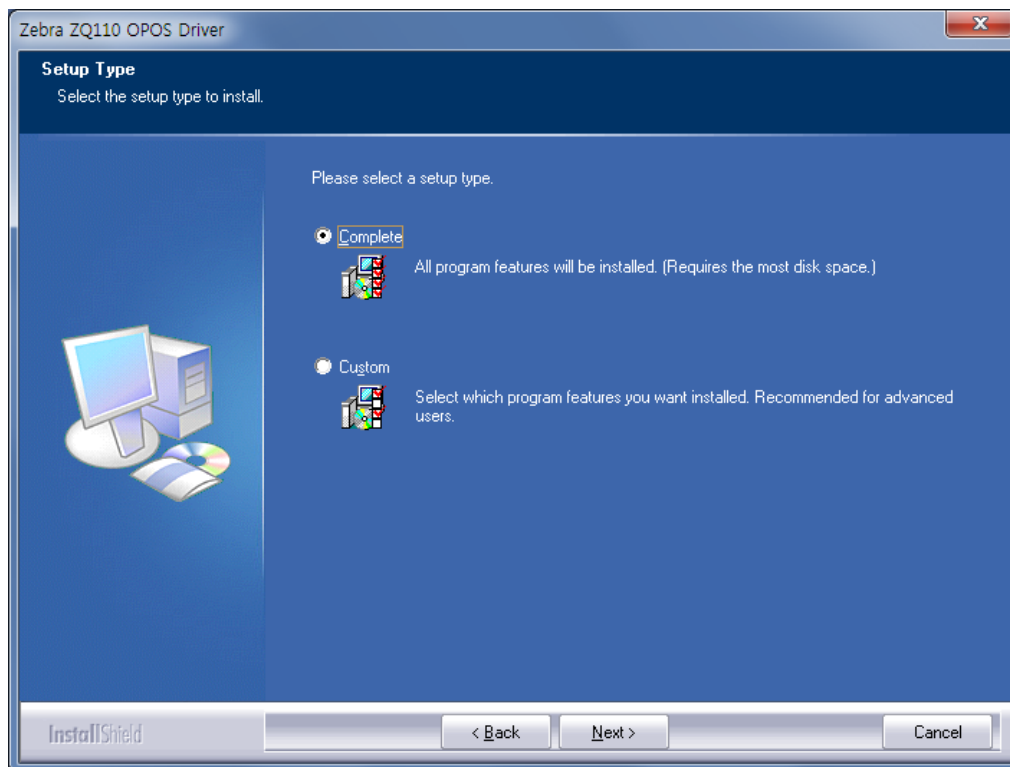
#### 2. Click **Next**.

License Agreement dialog displays.





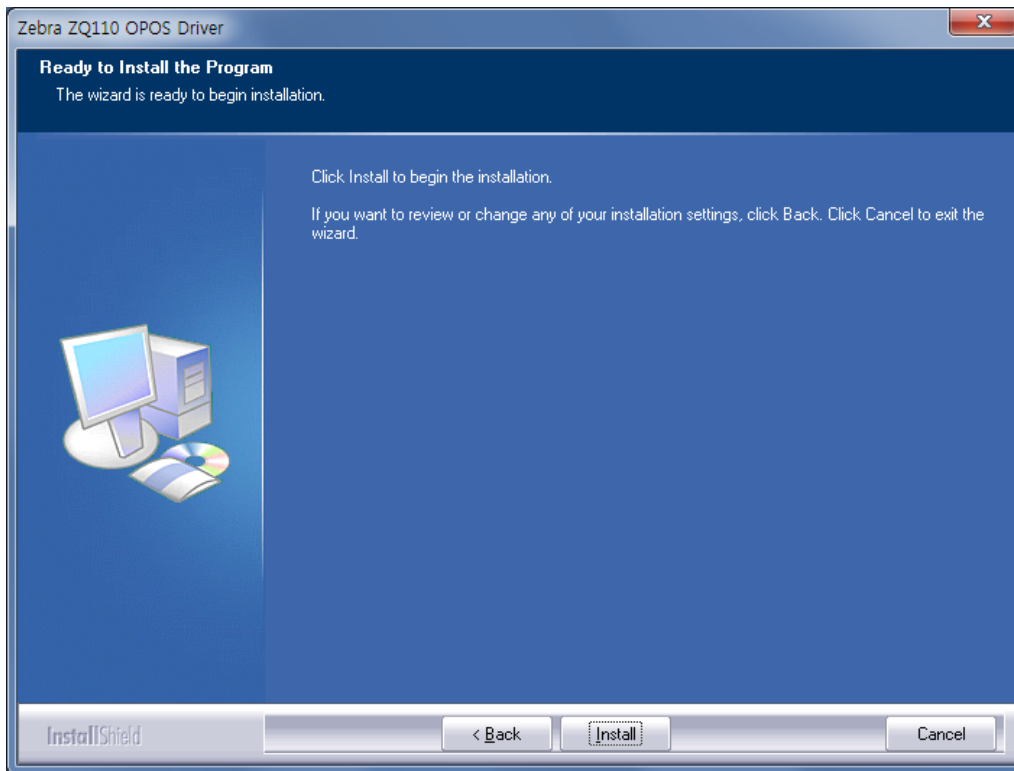
3. Select **I accept the terms of the license agreement**, and click **Next**.  
Setup Type dialog displays.



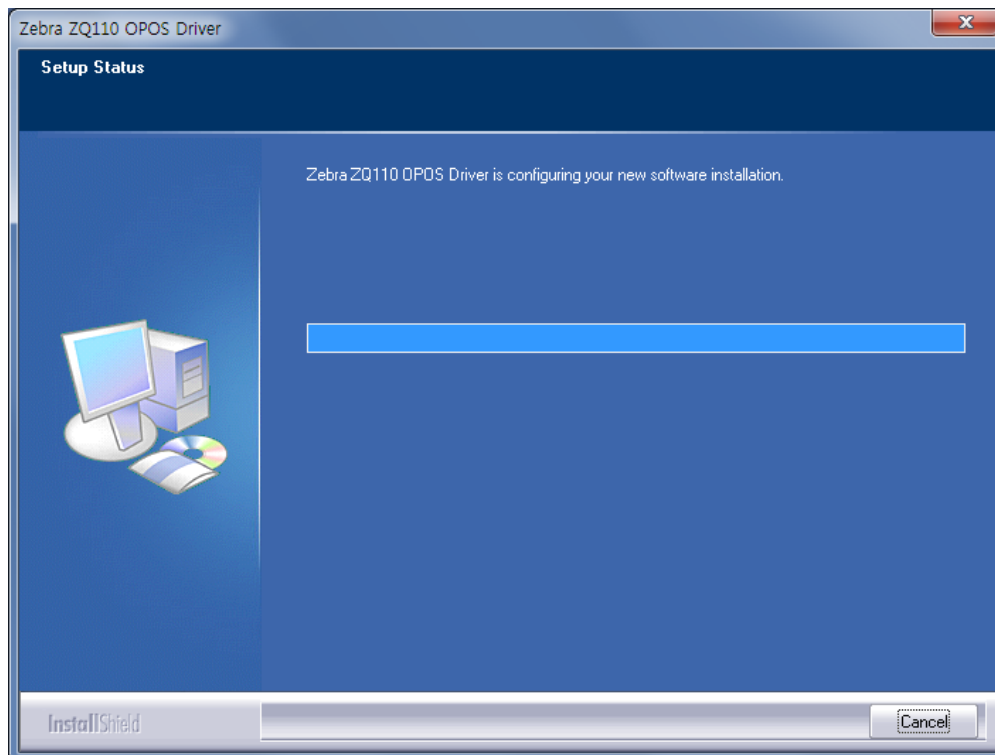
4. Select **Complete**, and click **Next**.  
Choose Installation Destination dialog displays.  
The default directory is:

C:\Program Files\OPOS\Zebra ZQ110 OPOS DRIVER\.

5. Select the default directory or a unique directory, and click **Next**. Ready to Install the Program dialog displays.



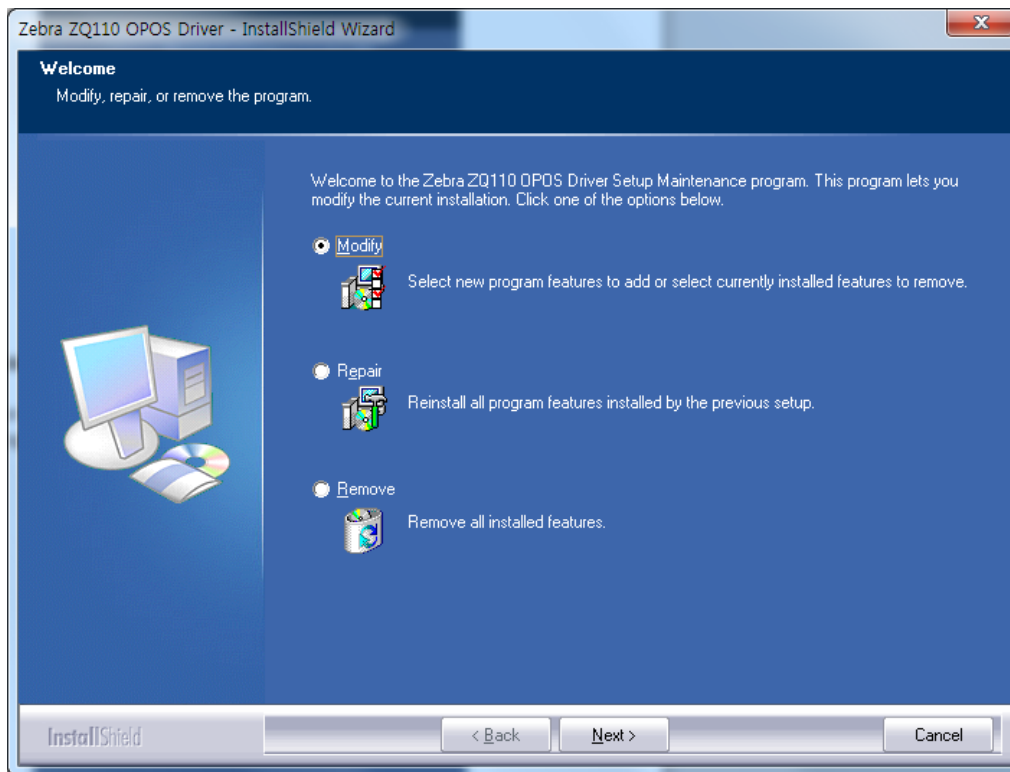
6. Click **Install** to begin the installation. Click **Cancel** to exit the installation. Setup Status dialog displays.



### 3-2 Uninstall the OPOS Driver

To remove or modify the OPOS DRIVER,

1. Open the Control Panel.
2. Select ZebraZQ110 OPOS Driver from Add/Remove Programs
3. Select **Uninstall** or **Change**.





[www.zebra.com](http://www.zebra.com)

---

**Zebra Technologies International, LLC**

475 Half Day Road  
Suite 500, Lincolnshire  
Illinois 60069 USA  
Phone: +1.847.634.6700  
Toll-Free: +1.800.230.9494  
Fax: +1.847.913.8766

**Zebra Technologies Europe Limited**

Dukes Meadow  
Millboard Road  
Bourne End  
Buckinghamshire, SL8 5XF, UK  
Phone: +44 (0)1628 556000  
Fax: +44 (0)1628 556001

## Free Manuals Download Website

<http://myh66.com>

<http://usermanuals.us>

<http://www.somanuals.com>

<http://www.4manuals.cc>

<http://www.manual-lib.com>

<http://www.404manual.com>

<http://www.luxmanual.com>

<http://aubethermostatmanual.com>

Golf course search by state

<http://golfingnear.com>

Email search by domain

<http://emailbydomain.com>

Auto manuals search

<http://auto.somanuals.com>

TV manuals search

<http://tv.somanuals.com>