



# PARTS LIST

## BRUSHCUTTERS

# BC4300FWM

**NOTE :**

1. Use KOMATSU ZENOAH genuine parts as specified in the parts list for repair and/or replacement.
2. KOMATSU ZENOAH does not warrant the machines, which have been damaged by the use of any parts other than those specified by the company.
3. When placing parts orders for repair and/or replacement, check if the model name and the serial number are applicable to those specified in the parts list, then use parts number described in the parts list.
4. The contents described in the parts list are accurate as of the date and may change due to improvement.
5. The parts for the machine shall be supplied ten (10) years after the machine is discontinued. [It is possible that some specific parts may be subject to change of their delivery term and list price within the limit of ten (10) years after the machine is discontinued. It is also possible that some parts may be available even after the limit of ten (10) years.]

APPLICABLE SERIAL NUMBERS:

900101 and up

October 1999

Fig.1 DRIVE UNIT & ACCESSORIES

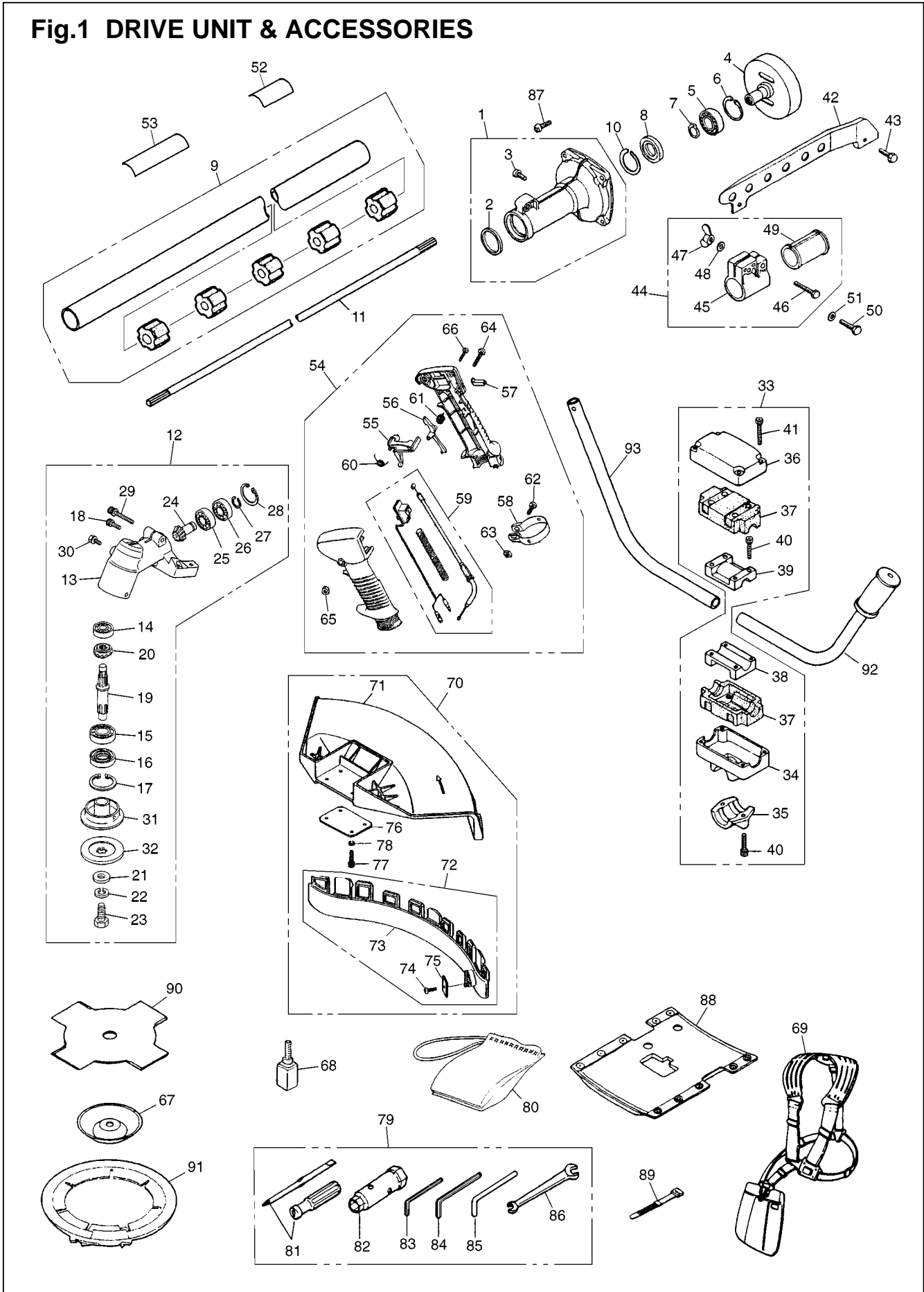


Fig.1 DRIVE UNIT &amp; ACCESSORIES

Key#	PART NUMBER	DESCRIPTION	Q'TY /UNIT	NOTE	Key#	PART NUMBER	DESCRIPTION	Q'TY /UNIT	NOTE
1	3540-11102	HOUSING-COMP	1		60	1638-84170	• SPRING	1	
2	3144-11150	• SEAL	1		61	1638-84180	• SPRING	1	
3	0263-20610	• SCREW	1		62	0263-60620	• SCREW	1	
4	3540-11311	DRUM	1		63	1638-84190	• NUT	1	
5	06004-06202	BEARING	1		64	0260-60535	• SCREW	1	
6	04065-03515	RING	1		65	1638-84210	• NUT	1	
7	04064-01510	RING	1		66	1638-84220	• SCREW	1	
8	3540-11410	SPACER	1		67	3540-13283	COVER	1	
9	6340-12101	PIPE-COMP	1		68	3140-13261	SHAFT	1	
10	3260-11410	RING	1		69	6220-17201	HARNES-ASS'Y	1	
11	6340-12210	SHAFT	1		70	6489-24000	GUARD-ASS'Y	1	
12	6562-13000	GEARCASE-ASS'Y	1		71	6489-24110	• GUARD	1	
13	6562-13110	• GEARCASE	1		72	6489-24200	• PLATE-COMP	1	
14	06000-06000	• BEARING	1		73	6489-24210	•• PLATE	1	
15	06000-06202	• BEARING	1		74	6489-24220	•• BRADE	1	
16	3130-13141	• SEAL	1		75	0277-10412	•• SCREW	1	
17	04065-03515	• RING	1		76	6489-24120	• PLATE	1	
18	01252-30510	• BOLT	1		77	01252-30516	• BOLT	4	
19	3540-13212	• SHAFT, gear	1		78	01601-20513	• WASHER	4	
20	3540-13220	• GEAR	1		79	3542-91000	TOOL-SET	1	
21	01643-31032	• WASHER	1		80	3541-91110	• BAG	1	
22	3544-13280	• WASHER	1		81	1030-91340	• DRIVER	1	
23	3540-13290	• BOLT	1		82	3144-91160	• SOCKET	1	
24	3540-13311	• PINION	1		83	09007-00425	• WRENCH	1	
25	06000-06001	• BEARING	1		84	09007-00528	• WRENCH	1	
26	06001-06001	• BEARING	1		85	3540-91110	• BAR	1	
27	3130-13270	• RING	1		86	3540-91120	• SPANNER	1	
28	04065-02812	• RING	1		87	6468-91150	BOLT	4	
29	3540-13260	• BOLT	1		88	3523-17112	PROTECTOR	1	
30	0224-40610	• BOLT	1		89	3540-93120	BAND	1	
31	6251-13240	• HOLDER(A)	1		90	6298-14343	SAW	1	
32	3540-13251	• HOLDER(B)	1		91	6251-15910	COVER, blade	1	
33	3540-14900	BRACKET-ASS'Y	1		92	6465-14200	HANDLE-L	1	
34	3540-14910	• BRACKET	1		93	6350-14230	HANDLE	1	
35	3540-14920	• CAP-L	1						
36	3540-14930	• CAP-U	1						
37	3540-14140	• ABSORBER	2						
38	3640-14150	• CLAMP-A	1						
39	3540-14160	• CLAMP-B	1						
40	01252-30525	• BOLT	6						
41	01252-30530	• BOLT	4						
42	6550-11420	HANGER	1						
43	0225-10616	BOLT	1						
44	3540-11441	BRACKET-COMP	1						
45	3540-11432	• BRACKET	1						
46	0224-00635	• BOLT	1						
47	3540-11460	• NUT	1						
48	01642-20608	• WASHER	1						
49	3540-11450	• SPACER	1						
50	0224-00625	• BOLT	1						
51	01642-20608	• WASHER	1						
52	T3046-12510	PLATE, name	1						
53	6425-12552	PLATE	1						
54	2175-84001	LEVER-ASS'Y	1						
55	1638-84130	• LEVER	1						
56	1638-84140	• LEVER	1						
57	1638-84150	• STOPPER	1						
58	1638-84160	• CLAMP	1						
59	2175-84301	• CABLE-C	1						

Fig.2 ENGINE UNIT

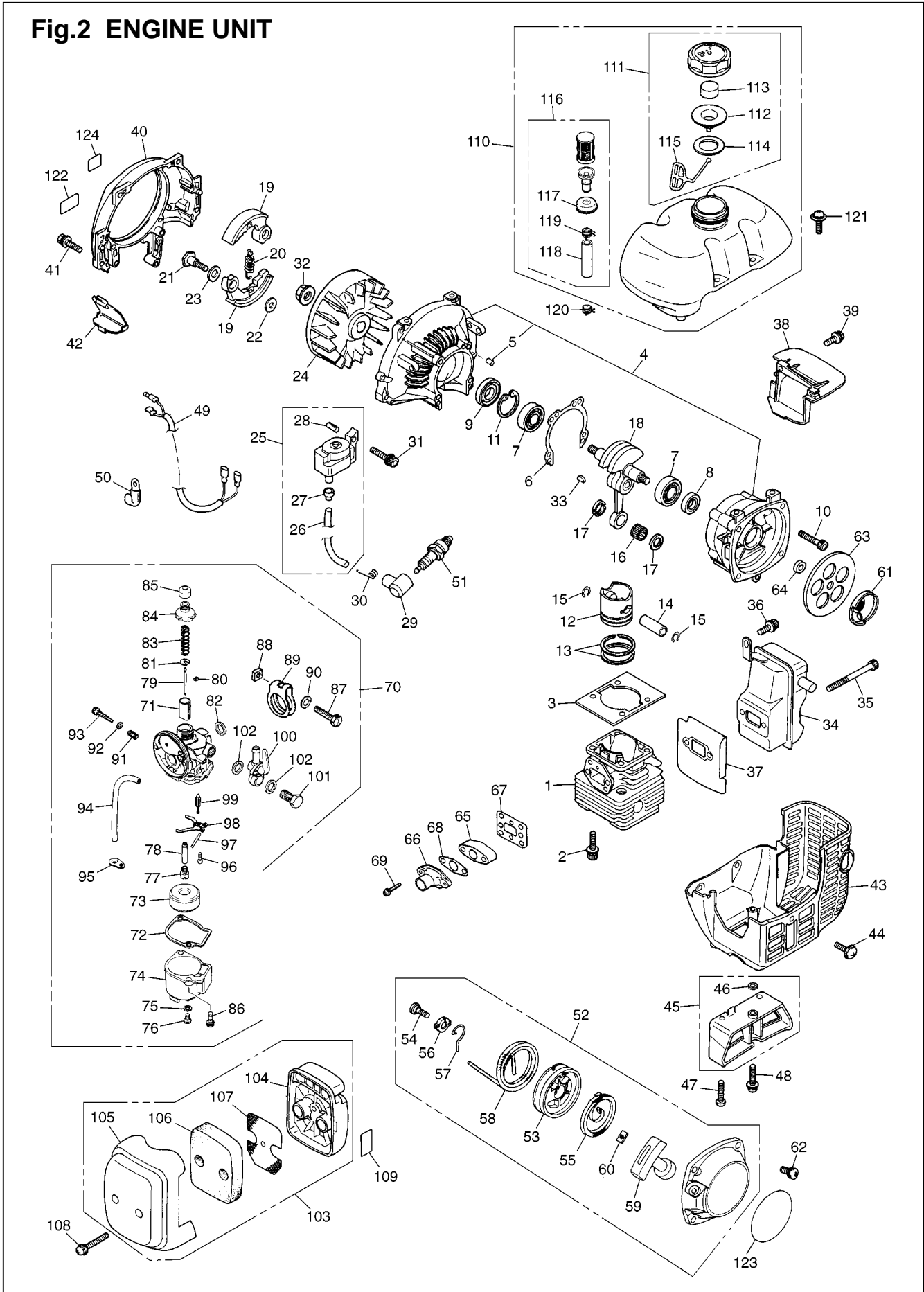


Fig.2 ENGINE UNIT

Key#	PART NUMBER	DESCRIPTION	Q'TY /UNIT	NOTE	Key#	PART NUMBER	DESCRIPTION	Q'TY /UNIT	NOTE
1	4500-12110	CYLINDER	1		65	1695-13161	INSULATOR	1	
2	3310-12281	BOLT	4	M5x20	66	1695-13171	PIPE	2	
3	4500-13120	GASKET, base	1		67	4500-13150	GASKET, insulator	1	
4	4500-21100	CRANKCASE COMP	1		68	1695-13131	GASKET, carburetor	1	
5	2629-21130	• PIN	3		69	0263-90530	SCREW	2	M5x30
6	4500-21140	GASKET, case	1		70	4570-81000	CARBURETOR ASS'Y	1	
7	06030-06201	BEARING	2		71	4570-81150	• VALVE	1	
8	4810-21210	OIL SEAL	1		72	1695-81320	• PACKING	1	
9	1650-21220	OIL SEAL	1		73	1695-81180	• FLOAT	1	
10	01252-30530	BOLT	4	M5x30	74	1614-81310	• CHAMBER	1	
11	04065-03212	SNAP RING	1		75	1400-81660	• PACKING	1	
12	4500-41110	PISTON	1		76	1400-81650	• SCREW	1	
13	1400-41220	RING	2		77	1695-81240	• JET	1	
14	2850-41310	PIN	1		78	1861-81230	• JET	1	
15	1300-41320	RING	2		79	1418-81210	• NEEDLE	1	
16	2850-41410	BEARING	1		80	1030-81000-16	• CLIP	1	
17	2850-41510	WASHER	2		81	1030-81000-17	• RECEIVE	1	
18	4500-42000	CRANKSHAFT COMP	1		82	1038-81002-34	• PACKING	1	
19	4500-51110	SHOE, clutch	2		83	1030-81000-14	• SPRING	1	
20	4500-51220	SPRING	1		84	1141-81110	• CAP	1	
21	1200-51211	SCREW	2		85	1141-81120	• CAP	1	
22	1200-51230	WASHER	2		86	0263-10416	• SCREW	2	
23	1200-51241	WASHER	2		87	1695-81290	• SCREW	1	
24	4500-71110	ROTOR	1		88	1695-81270	• NUT	1	
25	4570-71200	COIL ASS'Y	1		89	1695-81280	• BAND	1	
26	4570-71220	• CORD	1		90	1695-81580	• WASHER	1	
27	2616-71320	• CAP	1		91	1650-81260	• SPRING	1	
28	3356-21130	• PIN	2		92	1695-81540	• O-RING	1	
29	1900-72111	CAP, plug	1		93	1695-81250	• SCREW	1	
30	1900-72120	SPRING	1		94	1220-81410	• PIPE	1	
31	4500-72150	BOLT	2	M4x22	95	1220-81420	• STAY	1	
32	1650-43230	NUT	1		96	0263-00306	• SCREW	1	
33	1000-43240	KEY	1		97	1181-81210	• PIN	1	
34	4570-15110	MUFFLER	1		98	1695-81340	• HINGE	1	
35	01252-30565	BOLT	2	M5x65	99	1695-81360	• VALVE	1	
36	3310-31720	BOLT	1	M5x14	100	1179-81501	• COCK-A	1	
37	4570-15211	GASKET	1		101	1179-81211	• BOLT	1	
38	4570-15220	PLATE	1		102	1179-81221	• PACKING	2	
39	0263-90514	SCREW	1	M5x14	103	4570-82000	CLEANER-A	1	
40	4500-31110	COVER	1		104	1400-82113	• BODY	1	
41	3310-12281	BOLT	4	M5x20	105	4570-82120	• COVER	1	
42	4500-31210	PLATE	1		106	1418-82130	• ELEMENT	1	
43	4570-32110	COVER	1		107	1400-82141	• SCREEN	1	
44	4500-32120	SCREW	3	M5x12	108	4550-82150	SCREW	2	
45	4570-31900	STAND-C	1		109	1133-82060	LABEL	1	
46	4570-31920	• PACKING	1		110	T1047-85000	TANK-A	1	
47	3356-32210	SCREW	2		111	2133-85302	• CAP-A	1	
48	0263-90520	SCREW	1	M5x20	112	4570-85230	•• CAP	1	
49	T1011-73200	CORD-C	1		113	1030-85140	•• ELEMENT	1	
50	1140-72231	CLAMP	1		114	4500-85220	•• PACKING	1	
51	5933-73110	SPARKPLUG	1		115	3317-57242	•• STOPPER	1	
52	4500-75100	RECOIL ASS'Y	1		116	1400-85104	• JOINT-A	1	
53	4500-75120	• REEL	1		117	1400-85141	•• GROMMET	1	
54	4500-75150	• SCREW	1		118	1000-08050	•• TUBE	1	
55	1850-75130	• SPRING, spiral	1		119	1410-86130	•• CLIP	1	
56	4500-75180	• COLLAR	1		120	3073-86130	CLIP	1	
57	4500-75190	• ARM	1		121	1600-86120	SCREW	4	M5x22
58	4500-75160	• ROPE	1		122	1660-31121	LABEL, cover	1	
59	1140-75320	• KNOB	1		123	T1012-75410	LABEL, recoil	1	
60	5500-75170	• PLATE, stopper	1		124	2634-31420	LABEL, CE	1	
61	4500-75210	PULLEY	1						
62	4500-75511	SCREW	4	M6x14					
63	4500-75310	PLATE	1						
64	01643-30823	WASHER	1						

## Free Manuals Download Website

<http://myh66.com>

<http://usermanuals.us>

<http://www.somanuals.com>

<http://www.4manuals.cc>

<http://www.manual-lib.com>

<http://www.404manual.com>

<http://www.luxmanual.com>

<http://aubethermostatmanual.com>

Golf course search by state

<http://golfingnear.com>

Email search by domain

<http://emailbydomain.com>

Auto manuals search

<http://auto.somanuals.com>

TV manuals search

<http://tv.somanuals.com>