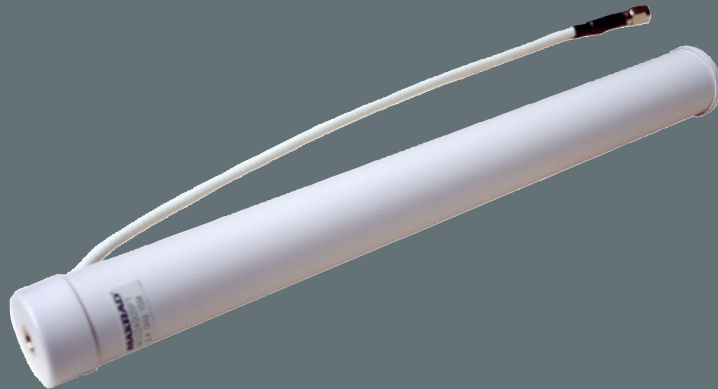


# 5dBi omnidirectional antenna



The NXA-WAP2405A 5dBi omnidirectional antenna is designed to be rack and/or ceiling mountable. Its broad elevation plane radiation pattern has been shaped to direct energy where it is needed, while suppressing the misdirected upper and lower sidelobe energy. The result is excellent coverage for a variety of in-building applications.

- Optimized radiation pattern focuses energy where it is needed while suppressing upper and lower sidelobe energy.
- UL Plenum rated RG58 coax cable and UL94-V0 radome meet the strictest safety specifications.
- Includes a 1/4-20 insert that allows for easy installation clipping to a ceiling tile rail or the top of most racks.



# 5dBi omnidirectional antenna

## NXA-WAP2405A (FG2255-21)

### MECHANICAL SPECIFICATIONS:

#### TEMPERATURE RANGE:

- -30° C to 75° C

#### DIMENSIONS:

- 9.8" L x 1.0" OD  
(248mm L x 25.4mm OD)

#### CABLE:

- 12" (305 mm) RG58

#### WEIGHT:

- 8 oz (0.23 kg)

### ELECTRICAL SPECIFICATIONS:

#### FREQUENCY RANGE:

- 2400-2485 MHz

#### NORMAL GAIN:

- 5.5 dBi

#### HORIZONTAL BEAMWIDTH:

- 360°

#### VERTICAL BEAMWIDTH:

- 32°

#### VSWR:

- < 1.5:1

### CONNECTOR:

- Various Options

### GENERAL SPECIFICATIONS:

#### RADOME MATERIAL:

- UL94-V0 plastic

#### POLARIZATION:

- Vertical, Linear

#### WIND SURVIVAL:

- 125 mph

#### NORMAL IMPEDANCE:

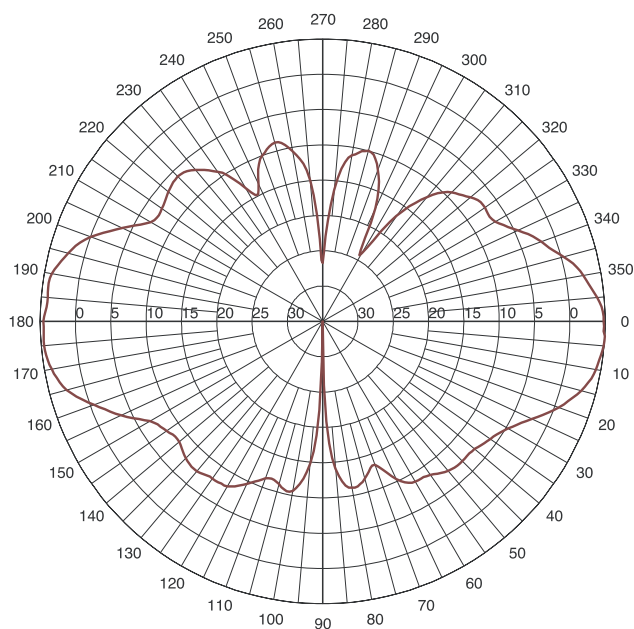
- 50 Ohms

#### MAXIMUM POWER:

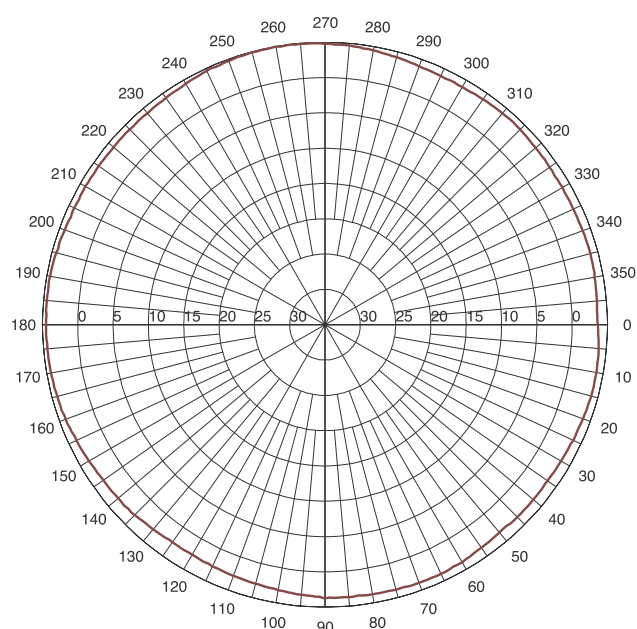
- 5 Watts

#### MOUNTING METHOD:

- 1/4-20 insert of clipping to a ceiling tile rail



NXA-WAP2405A Elevation Cut



NXA-WAP2405A Azimuth Cut



IT'S YOUR WORLD. TAKE CONTROL.

ARGENTINA • AUSTRALIA • BELGIUM • BRAZIL • CANADA • CHINA • ENGLAND • FRANCE • GERMANY • GREECE • HONG KONG • INDIA • INDONESIA • ITALY • JAPAN  
LEBANON • MALAYSIA • MEXICO • NETHERLANDS • NEW ZEALAND • PHILIPPINES • PORTUGAL • RUSSIA • SINGAPORE • SPAIN • SWITZERLAND • THAILAND • TURKEY • USA  
ATLANTA • BOSTON • CHICAGO • CLEVELAND • DALLAS • DENVER • INDIANAPOLIS • LOS ANGELES • MINNEAPOLIS • PHILADELPHIA • PHOENIX • PORTLAND • SPOKANE • TAMPA  
3000 RESEARCH DRIVE, RICHARDSON, TX 75082 • 800.222.0193 • 469.624.8000 • +1.469.624.7400 • 469.624.7153 fax • www.amx.com

## Free Manuals Download Website

<http://myh66.com>

<http://usermanuals.us>

<http://www.somanuals.com>

<http://www.4manuals.cc>

<http://www.manual-lib.com>

<http://www.404manual.com>

<http://www.luxmanual.com>

<http://aubethermostatmanual.com>

Golf course search by state

<http://golfingnear.com>

Email search by domain

<http://emailbydomain.com>

Auto manuals search

<http://auto.somanuals.com>

TV manuals search

<http://tv.somanuals.com>