



# APM CO., LTD

## APG-251215

### Panel Directional Dual Band Antenna for 802.11abg

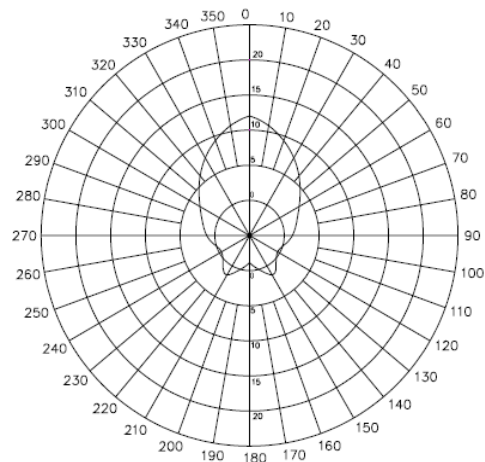
#### Electrical Specification:

Frequency	2.4~2.5 / 5.1~5.9 GHz
Part Number	APG-251215
Polarization	Linear
V.S.W.R.	1 : 1.5 Max
Impedance	50 OHMS $\pm$ 5 $\Omega$
Gain	12 / 15 dBi
Power handling	20W Max
Front to back ratio	25 dB
HPBW / horizontal	50° / 10°
HPBW / vertical	30° / 10°

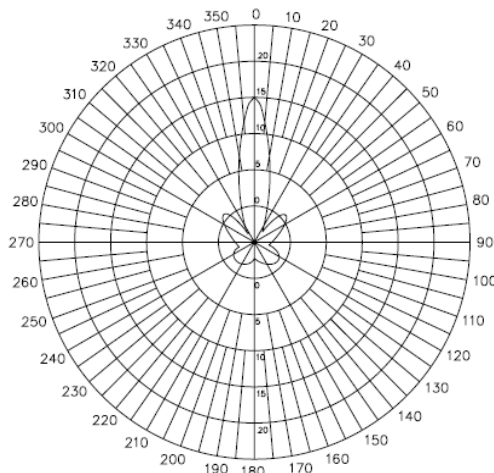
#### MECHANICAL SPECIFICATION

Connector Type	N Type Female
Length	270 x 205 x 15 mm
Weight	310g
Radome color	Gray - White
Radome material	PC and ABS

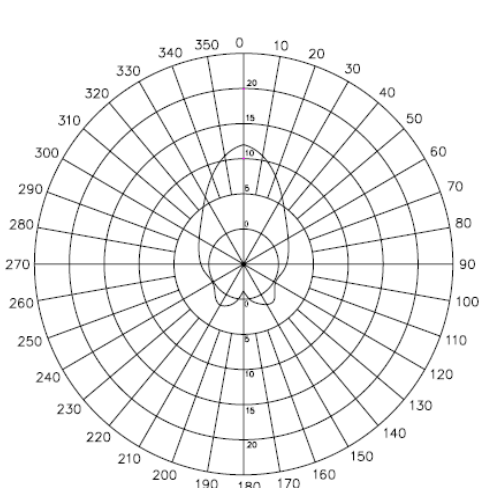
H-Plane Field Patterns for 2.4GHz



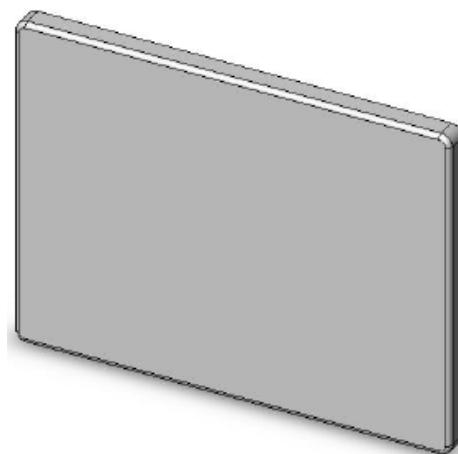
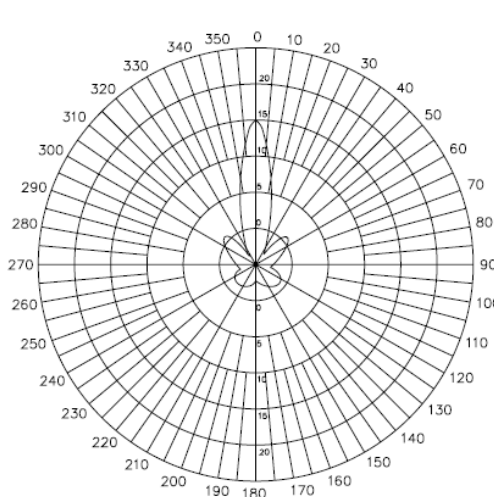
H-Plane Field Patterns for 5.8GHz



E-Plane Field Patterns for 2.4GHz



E-Plane Field Patterns for 5.8GHz



## Free Manuals Download Website

<http://myh66.com>

<http://usermanuals.us>

<http://www.somanuals.com>

<http://www.4manuals.cc>

<http://www.manual-lib.com>

<http://www.404manual.com>

<http://www.luxmanual.com>

<http://aubethermostatmanual.com>

Golf course search by state

<http://golfingnear.com>

Email search by domain

<http://emailbydomain.com>

Auto manuals search

<http://auto.somanuals.com>

TV manuals search

<http://tv.somanuals.com>