

Quick Start



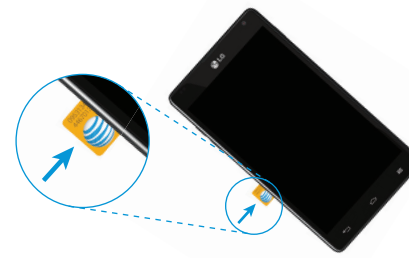
Get to Know Your Phone



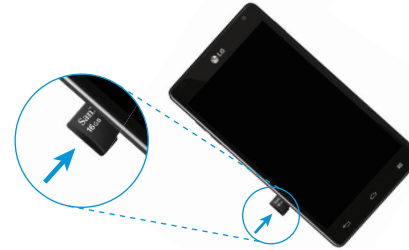
Set Up Your Phone

Install the MicroSIM and microSD Cards

- With your phone off, lift up the slot cover on the side of the phone.
- Slide the microSIM card into its slot with the gold contacts facing downward.



- With the gold contacts facing downward, slide the microSD card into its slot.



- Replace the slot cover.

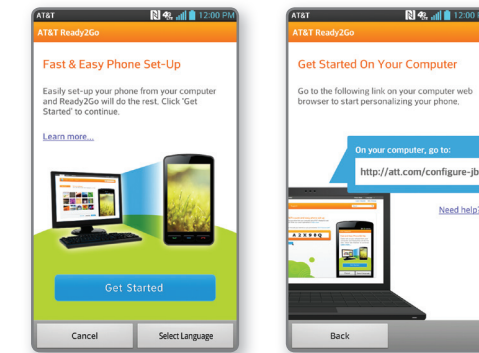
AT&T Ready2Go

Ready2Go helps you set up your device by using your computer.

- Configure email, contacts, and Wi-Fi®.
- Customize your home screen, wallpaper, ringtones, and more.

Get Started

- When your phone first starts up, you'll see the AT&T Ready2Go wizard.
- Touch **Get Started**. You will see a web address and code.
- On your computer's browser, go to the web page.
- Complete the steps to send personalization to your phone.
- Enter the code from your phone on the web page.
- On your phone, touch **Finish**.



Note: To skip the wizard and update later, tap **Cancel** at the bottom of the screen. To return to the wizard from the home screen, tap **Apps** > **AT&T Ready2Go** and follow the steps above.

Customize Home Screens

Add a Home Screen

- Pinch your fingers together on a home screen to enter Canvas view.
- Touch a screen with **+** to add a home screen.

Customize a Home Screen

- Touch **+** on a home screen and choose a category:
 - Apps:** Add applications from the application launcher.
 - Downloads:** Add downloaded applications.
 - Widgets:** Add shortcuts and dynamically updating widgets.
 - Wallpapers:** Change your home screen wallpaper.
- To move an item, press and hold it and drag it to a new location. To delete it, drag it to **Remove**.



BC

Note: For more information on your device, visit att.com/DeviceHowTo.

Find More Information

On The Web: Interactive web tutorials are available at att.com/Tutorials or click on the bookmark in the browser. Select Manufacturer: **LG** and Model: **Optimus G** from the drop-down menus. Detailed support information including device specifications, user manual, troubleshooting, user forums, and knowledgebase articles are available at att.com/DeviceSupport. For information about your wireless account, service plan, or network, visit att.com/Wireless. Learn how to add a password on your device to protect your privacy, as well as report a lost or stolen phone at att.com/StolenPhone.

On The Phone: Call AT&T Customer Care at 1-800-331-0500 or dial 611 from any AT&T mobile phone for assistance with your service or device.

Find Accessories

Accessories for your smartphone are available at att.com/WirelessAccessories or visit your local AT&T store.

LG and the LG logo are registered trademarks of LG Corp. Optimus G is a trademark of LG Electronics, Inc. Google, the Google logo, Google Play, and Android are trademarks of Google Inc. microSD™ is a trademark of SanDisk. The Bluetooth® word mark and logos are registered trademarks owned by Bluetooth SIG, Inc. and any use of such marks by LG Electronics MobileComm, U.S.A., Inc. is under license. © 2013 AT&T Intellectual Property. All rights reserved. AT&T, the AT&T logo and all other AT&T marks contained herein are trademarks of AT&T Intellectual Property. All other marks contained herein are the property of their respective owners.

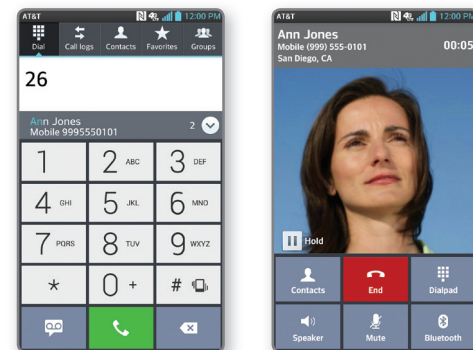
Calling and Voicemail

Make a Call

- From the home screen, touch **Phone**.
- Dial the number you want to call or start spelling the name of the desired contact.
- Touch a contact and then touch **Call** to place the call.

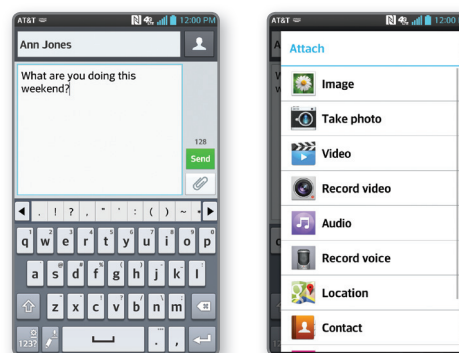
Access Voicemail

- From the home screen, touch **Phone**.
- Touch **Voice Mail**.
- Follow voice prompts to listen to messages.



Text and Picture Messaging

- From the home screen, touch **Messaging**.
- Touch **Compose**.
- In the **To** field, enter a number or touch **+** to select a name from your contact list or call logs.
- Enter your message.
- Touch **Attach** to attach a file.
- Touch **Send** to send the message.



Web Browsing

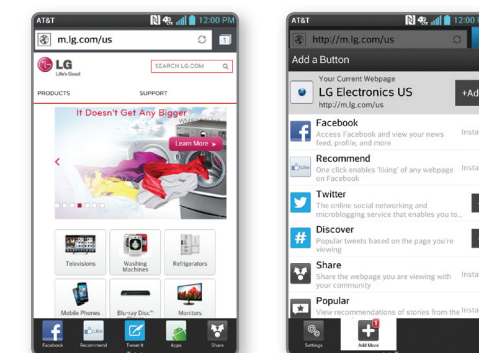
Browse the Web

- From the home screen, touch **Browser**.
- To enter a URL, touch the **web address bar**.
- Enter an address and touch **Go**.
- Scroll to navigate and touch links to open them. Use a pinching gesture to zoom out. Spread your fingers apart to zoom in. Press the **Menu Key** to access additional settings.
- To open a new browser tab, touch **+**.

Use the Browser Bar

Access Facebook® and news feeds, find relevant apps, share content, and more.

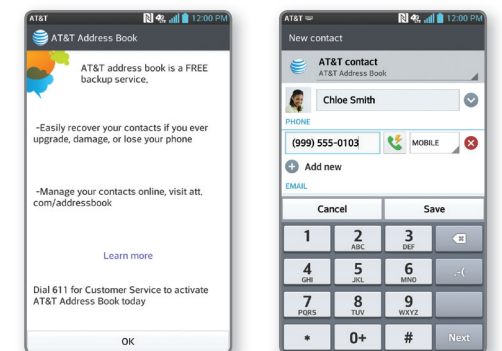
- To reveal the Browser Bar, swipe up from the bottom of the browser screen.
- To add a button, touch **Add More** and select a choice or create one of your own.
- Go to **Settings** > **Tutorial** for more information on the Browser Bar.



Address Book

Create a New Contact

- From the home screen, touch **Contacts**.
- When you access your address book the first time, you may choose to sync your phone with AT&T Address Book.
- To create a new contact, touch **+**.
- Enter the contact's information. To add a field, touch **Add new**. To remove a field, touch **X**.
- Touch **Add another field** to see more categories.
- Touch **Save** to save the contact.



Please don't text and drive.
Messaging rates apply.

Camera and Camcorder

Take a Picture/Record a Video

- 1 From the home screen, touch **Camera**.
- 2 Touch to take a photo.
- 3 Touch to switch to the camcorder.
- 4 Touch to start recording. To take a still shot while recording, touch .
- 5 Touch to stop.

Share Photos

- 1 From the home screen, touch **Apps** > **Gallery**.
- 2 Touch an album.
- 3 Touch and then touch the image(s) you wish to share.
- 4 Touch **Share**.
- 5 Select a destination and follow the on-screen instructions.



Note: To access the front-facing camera or camcorder, touch . Touch to view and change camera/camcorder settings.

Connectivity

Use Bluetooth®

- 1 From the home screen, press the **Menu Key**.
- 2 Touch **All settings** > **Networks** > **Bluetooth**.
- 3 If **Bluetooth** is off, touch to enable it.
- 4 Touch **Search for devices**.
- 5 Touch the name of the device you wish to pair with. See the *Bluetooth* device's user manual for more information on pairing.

Connect to Wi-Fi

- 1 From the home screen, press the **Menu Key**.
- 2 Touch **All settings** > **Networks** > **Wi-Fi**.
- 3 If **Wi-Fi** is off, touch to enable it.
- 4 Touch a network name. Enter a password if required and then touch **Connect**.



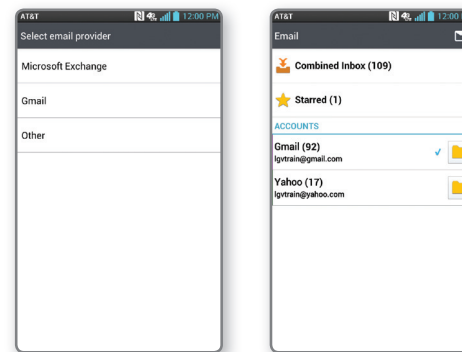
Set Up and Send Email

Set Up an Email Account

- 1 From the home screen, touch **Email**.
- 2 Touch **Microsoft Exchange**, **Gmail**, or **Other**. Contact your IT administrator to help set up your corporate Microsoft® Exchange account.
- 3 Enter your email address and password and touch **Next**.
- 4 Follow any additional instructions. When complete, touch **Done** to view your inbox.
- 5 To compose an email, touch .
- 6 Enter a recipient and other relevant information, and then touch **Send**.

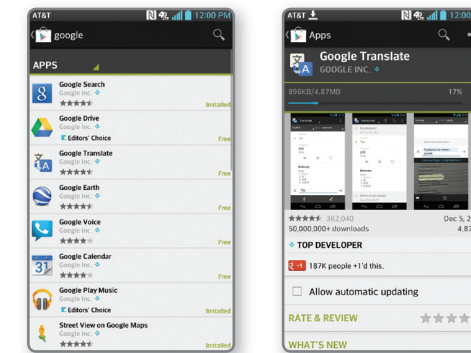
View Combined Inbox

- 1 From the home screen, touch **Email**.
- 2 Press the **Menu Key** and touch **Accounts**.
- 3 Touch **Combined Inbox** to view all emails in a single inbox.



Download Apps with Google Play™

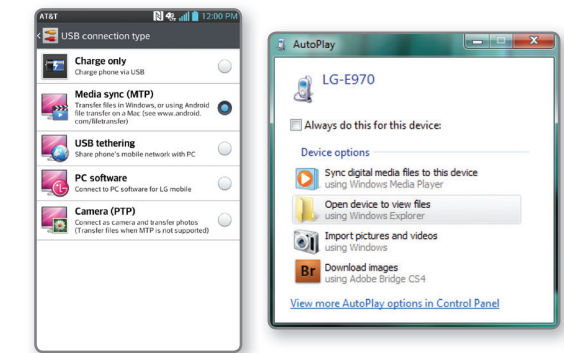
- 1 From the home screen, touch **Apps** > **Play Store**.
- 2 Touch a category to browse selections, or touch to search for an item. Enter a keyword and touch on the keypad.
- 3 Touch an app and follow the on-screen installation instructions. Once the app has been downloaded and installed, you will see a notification in the Notifications Bar.



Note: To use Google Play, you must first create or sign into a Google account. To purchase a paid app, you'll need to set up a payment method with Google Wallet™.

Transfer Multimedia

- 1 Connect your Optimus G to your computer with a USB cable and touch **Media sync (MTP)**.
- 2 On your PC, choose **Open device to view files** using Windows Explorer. If you are using a Mac, see www.android.com/filetransfer.
- 3 Your phone will appear as another hard drive on your computer. Click on the drive to view it.
- 4 Drag and drop your files into the corresponding folders, such as Music, Movies, or Pictures.*
- 5 When you're finished transferring files, swipe down on the Notifications Bar and touch **USB connected** > **Charge only**. You may now safely unplug your device.



*Files must be Digital Rights Management (DRM) free.

AT&T Services

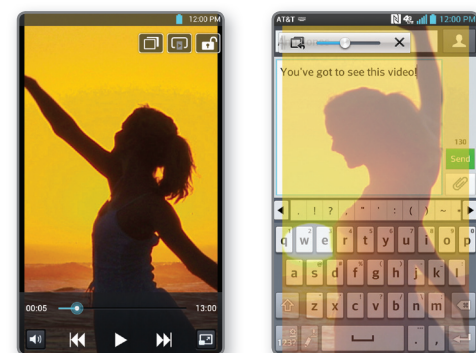
- myAT&T:** Track your usage, review and pay your bill, and update your data plan services.
- AT&T Code Scanner:** Reads UPC, QR, and Data Matrix barcodes that you find on products, in ads, or online.
- AT&T DriveMode™:** Silence notifications, set an auto-reply so people will know you're driving, and more.
- AT&T FamilyMap:** Locate a family member's wireless phone on a map from your mobile phone or PC.
- AT&T Locker™:** Safely store and share all your photos, videos, and documents.
- AT&T Navigator®:** Get voice-guided, turn-by-turn driving directions and traffic updates.
- AT&T Ready2Go:** Set up and customize your phone from your personal computer's web browser.
- AT&T Smart Wi-Fi:** Maximize your battery performance and data plan, simplify access to AT&T Hot Spots and Wi-Fi networks, automate your Wi-Fi connections, and track your data usage.
- Live TV:** Watch LIVE, on-demand, and downloadable mobile TV.
- Messages:** Manage your text messages, call history, voicemail, and more, all in one convenient place.

Data rates may apply. AT&T FamilyMap, Live TV, and AT&T Navigator require a separate subscription. Live TV requires mobile broadband service. Service not available in all areas. Programming subject to blackout restrictions. Download and watch capability available for select content, requires Wi-Fi connection, and is available for viewing for limited time periods.

QSlide Function

The QSlide function enables an overlay on your phone's display for easy multitasking.

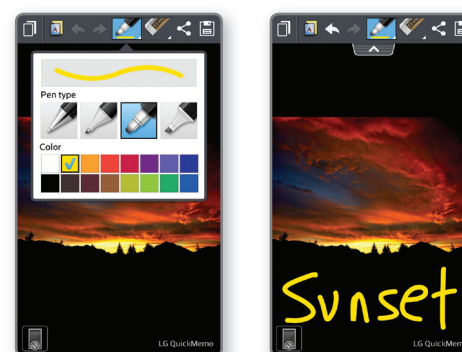
- 1 While watching an on-device video, touch . The video continues to play as an overlay on your phone.
- 2 Use the slider to adjust the transparency of the overlay.
- 3 Touch **Messaging** to send a text while in QSlide mode. You can also browse the web, edit contacts, or choose other phone options.
- 4 Touch to exit the QSlide function.



QuickMemo™

Capture screens, draw on them, and share them with family and friends with QuickMemo.

- 1 From any screen, press both volume keys at the same time.
- 2 Use your fingertip to draw or write on the screen.
- 3 Touch to change the pen type or color.
- 4 If you make a mistake, touch to access the eraser, or touch to undo your last pen stroke.
- 5 To overlay, touch while keeping the memo on top.
- 6 To stop overlay and return to QuickMemo, touch .
- 7 To save your creation, touch . Touch and follow on-screen instructions to share your memo.
- 8 To exit QuickMemo at any time, press the **Back Key**.



Note: Memos are saved in the Gallery.

NFC Tags and LG Tag+

Use NFC

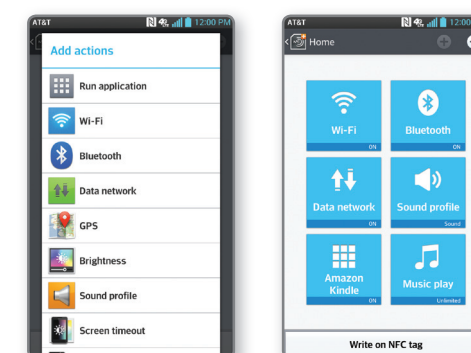
With Near Field Communication (NFC) you can instantly change your phone settings to suit your environment. Before you begin, make sure **NFC** is enabled on your phone.

- Touch the back of your phone to an NFC tag to automatically change your phone's settings.

Use LG Tag+

LG Tag+ lets you customize NFC tags with the settings you prefer.

- 1 From the home screen, touch **Apps** > **LG Tag+**.
- 2 Touch .
- 3 Enter a name for the tag and touch **OK**.
- 4 Touch an action to add it to the tag. Touch or to add or remove actions. When you're finished, touch **Write on NFC tag**.
- 5 Hold your phone to a blank tag and then touch **OK**.



NFC tags are sold separately.

Network Indicators

Your 4G LTE wireless device will indicate which of the AT&T wireless networks you are connected to. A network indicator does not necessarily mean that you will experience any particular upload or download data speeds.

- 4G LTE:** Connected to the AT&T 4G LTE network.
- 4G:** Connected to the AT&T HSPA+ network. The AT&T HSPA+ network is capable of delivering 4G speeds when combined with enhanced backhaul. 4G availability is increasing with ongoing backhaul deployment.

E: Connected to the AT&T EDGE/2G network. Actual data upload and download speeds depend on various factors, including the device, network utilization, file characteristics, terrain, etc. Learn more at: wireless.att.com/learn/articles-resources/wireless-terms.jsp, your AT&T Wireless Customer Agreement, Section 3.2 "Where and How Does AT&T Service Work?" The AT&T HSPA+ network can deliver 4G speeds when combined with enhanced backhaul. Your wireless device can't distinguish between HSPA+ cell sites with enhanced backhaul and those without. Enhanced backhaul not available everywhere. Learn more at att.com/network.

Limited 4G LTE availability in select markets. LTE is a trademark of ETSI.

Free Manuals Download Website

<http://myh66.com>

<http://usermanuals.us>

<http://www.somanuals.com>

<http://www.4manuals.cc>

<http://www.manual-lib.com>

<http://www.404manual.com>

<http://www.luxmanual.com>

<http://aubethermostatmanual.com>

Golf course search by state

<http://golfingnear.com>

Email search by domain

<http://emailbydomain.com>

Auto manuals search

<http://auto.somanuals.com>

TV manuals search

<http://tv.somanuals.com>