



**AUDIOVOX®**  
**ELECTRONICS CORP.**

**2.5" LCD Backup Monitor**  
**Model: ACAM250**

**Installation/User's Manual**



**Features:**

- 2.5" TFT color LCD display
- Flexible mounting pad with 3M tape monitor mounts on either vehicle windshield or dashboard
- Rearview camera input
- Automatically displays backup camera image when vehicle is in reverse

# Warnings

This product is intended to assist in safe driving by signaling the driver of obstacles behind the vehicle while the vehicle is in reverse. You, as the driver, are solely responsible for the safe operation of your vehicle and the safety of your passengers according to your local traffic regulations. Do not use any features of this system to the extent it distracts you from safe driving. Your first priority while driving should always be the safe operation of your vehicle. Audiovox Electronics Corporation cannot accept any responsibility whatsoever for accidents resulting from failure to observe these precautions or safety instructions.

1. This product utilizes high voltage. Any unauthorized modifications or damage to the product may result in electrical shock. Handle all components with care. Inspect regularly for damage to components and cabling.
2. You are responsible for ensuring that the installation of this product does not void or affect the vehicle manufacturer's warranty. Audiovox Electronics Corporation or its subsidiaries are not liable in full or in part for improper installation resulting in loss or damage to your property, or for voiding all or part of the vehicle manufacturer's warranty.
3. Do not apply excessive force to any of the components contained within this kit. Excessive force used before, during or after installation that results in a damaged or non-functional part will void all warranties.
4. Please follow the procedures in this installation manual. Improper installation or modification of this product will void all warranties.

## ***Warning: Backing up vehicle***

Do not back up vehicle while watching the mirror/monitor screen. Always look in the direction of vehicle motion. Use the mirror/monitor as an aid in safety confirmation. The actual distance is shorter than it appears in the monitor. The image range is limited. Beware of blind spots.


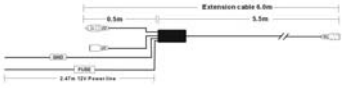

# TABLE OF CONTENTS

Warnings .....	1
Product description .....	2
Packing list .....	3
Installation Instructions .....	3
Operation .....	6
Maintenance .....	6
Troubleshooting .....	7
Warranty card .....	8

## Product Description

This Rearview Mirror/Monitor, when used with a backup camera, is designed to assist the driver by providing a clear and wide image of the area behind the vehicle whenever the vehicle is shifted into reverse. Never rely solely on this product to ensure the area is clear of children and/or obstructions. Use your monitor and look both ways. This is not intended to replace existing safety procedures, but to add an additional safety tool for your vehicle.

# Packing List

Description	Figure
2.5" Monitor	
Power Cable	
Tap Connectors	
Alcohol Wipe	

# Installation Instructions

## *Mounting the Monitor*

The monitor with flexible mounting pad and 3M tape mounts on either the vehicle windshield or dashboard.

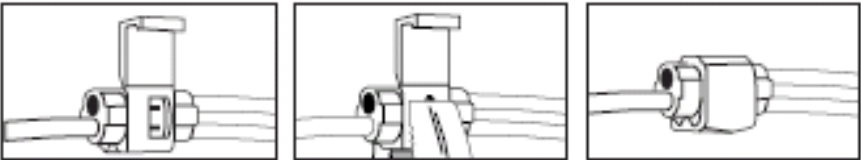
1. Choose a monitor location in your vehicle that does not block your view for safe driving.
2. Clean the monitor mounting area with the alcohol wipe provided.
3. Remove the protective film from the 3M flexible adhesive mounting pad on the bottom of the monitor and carefully press into place.

*Note: Once pressed into place, the pad cannot be easily moved. Be sure of the position before mounting.*

4. Connect the power cable to the Monitor cable.
5. Place (hide) the monitor cable behind the windshield trim piece and continue along under the head liner to the rear of the vehicle and into the truck, if applicable.

## ***Wiring the Monitor***

1. Wire the Power Cable to the vehicle's reverse lamp.
  - a) Locate the reverse lamp in the tail light assembly. Using the tap connector supplied, perform the following steps:
    - i. Place the un-stripped positive lead wire on the run channel.
    - ii. Insert the un-stripped red power wire completely.
    - iii. Fold the tap connector back over the wires and make the connection by crimping the u-contact down flush with the plastic insulator.
    - iv. Close the top hinged cover until latched.
  - b) Attach the black wire to the ground.
    - i. Place the un-stripped ground lead wire on the run channel.
    - ii. Insert the un-stripped black ground wire completely.
    - iii. Fold the tap connector back over the wires and make the connection by crimping the u-contact down flush with the plastic insulator.
    - iv. Close the top hinged cover until latched.
  - c) Connect the RCA video connector from the existing camera to the monitor cable.
  - d) Connect the power supply plug from the existing camera to the monitor power DC plug (if your camera has a power plug).



**Tap Connection**

# Operation

The monitor will automatically display the rear observation camera image whenever the vehicle is engaged in reverse.

# Maintenance

Though your Monitor requires little care, you can still maintain its condition and performance following the procedures below.

- Keep your system away from excessive moisture, extreme heat or cold and magnetic fields.
- Keep liquids away from the display monitor.
- To avoid damage, do not place auxiliary devices or other objects on the top of the monitor.
- Occasionally clean the surface of the monitor with soft cloth moistened with water or window cleaner.

# Troubleshooting

<b>Symptoms</b>	<b>Solutions</b>
The ON/OFF signal light <D> is not on after the car is started	Ensure that the parallel red and black line from the control box is connected properly.
No video signal appears while reversing the car	<ol style="list-style-type: none"><li>1. Verify that the LCD Contrast (Brightness) control knob is not set too low</li><li>2. Check the rearview Camera lens.</li><li>3. Check the rearview Camera wiring and connection.</li><li>4. Confirm that the cable from the monitor is connected properly.</li></ol>
Video image is not sharp enough	Clean the camera lens.





## 12 MONTH LIMITED WARRANTY

Applies to Audiovox Mobile Video Products

AUDIOVOX ELECTRONICS CORP. (the Company) warrants to the original retail purchaser of this product that should this product or any part thereof, under normal use and conditions, be proven defective in material or workmanship within 12 months from the date of original purchase, such defect(s) will be repaired or replaced with reconditioned product (at the Company's option) without charge for parts and repair labor. A game controller, if supplied, is similarly warranted for ninety (90) days.

To obtain repair or replacement within the terms of this Warranty, the product is to be delivered with proof of warranty coverage (e.g. dated bill of sale), specification of defect(s), transportation prepaid, to the Company at the address shown below.

This Warranty does not extend to the elimination of externally generated static or noise, to correction of antenna problems, to costs incurred for installation, removal or reinstallation of the product, or to damage to digital memory/media devices, gaming devices, discs, speakers, accessories, or vehicle electrical systems.

This Warranty does not apply to any product or part thereof which, in the opinion of the Company, has suffered or been damaged through alteration, improper installation, mishandling, misuse, neglect, accident, or by removal or defacement of the factory serial number/bar code label(s). THE EXTENT OF THE COMPANY'S LIABILITY UNDER THIS WARRANTY IS LIMITED TO THE REPAIR OR REPLACEMENT PROVIDED ABOVE AND, IN NO EVENT, SHALL THE COMPANY'S LIABILITY EXCEED THE PURCHASE PRICE PAID BY PURCHASER FOR THE PRODUCT.

This Warranty is in lieu of all other express warranties or liabilities. ANY IMPLIED WARRANTIES, INCLUDING ANY IMPLIED WARRANTY OF MERCHANTABILITY, SHALL BE LIMITED TO THE DURATION OF THIS WRITTEN WARRANTY. ANY ACTION FOR BREACH OF ANY WARRANTY HEREUNDER INCLUDING ANY IMPLIED WARRANTY OF MERCHANTABILITY MUST BE BROUGHT WITHIN A PERIOD OF 24 MONTHS FROM DATE OF ORIGINAL PURCHASE. IN NO CASE SHALL THE COMPANY BE LIABLE FOR ANY CONSEQUENTIAL OR INCIDENTAL DAMAGES FOR BREACH OF THIS OR ANY OTHER WARRANTY. No person or representative is authorized to assume for the Company any liability other than expressed herein in connection with the sale of this product.

Some states do not allow limitations on how long an implied warranty lasts or the exclusion or limitation of incidental or consequential damage so the above limitations or exclusions may not apply to you. This Warranty gives you specific legal rights and you may also have other rights which vary from state to state.

Audiovox Electronics Corporation, 150 Marcus Blvd., Hauppauge, New York 11788 • 1-800-645-4994

128-5495F



For Customer Service  
Visit Our Website At  
**[www.audiovox.com](http://www.audiovox.com)**  
Product Information, Photos,  
FAQ's Owner's Manuals

## Free Manuals Download Website

<http://myh66.com>

<http://usermanuals.us>

<http://www.somanuals.com>

<http://www.4manuals.cc>

<http://www.manual-lib.com>

<http://www.404manual.com>

<http://www.luxmanual.com>

<http://aubethermostatmanual.com>

Golf course search by state

<http://golfingnear.com>

Email search by domain

<http://emailbydomain.com>

Auto manuals search

<http://auto.somanuals.com>

TV manuals search

<http://tv.somanuals.com>