



**AUDIOVOX®**  
ELECTRONICS CORP.

## INSTALLATION GUIDE FOR THE:

# PRO-PDA15 Power Door Lock Actuator

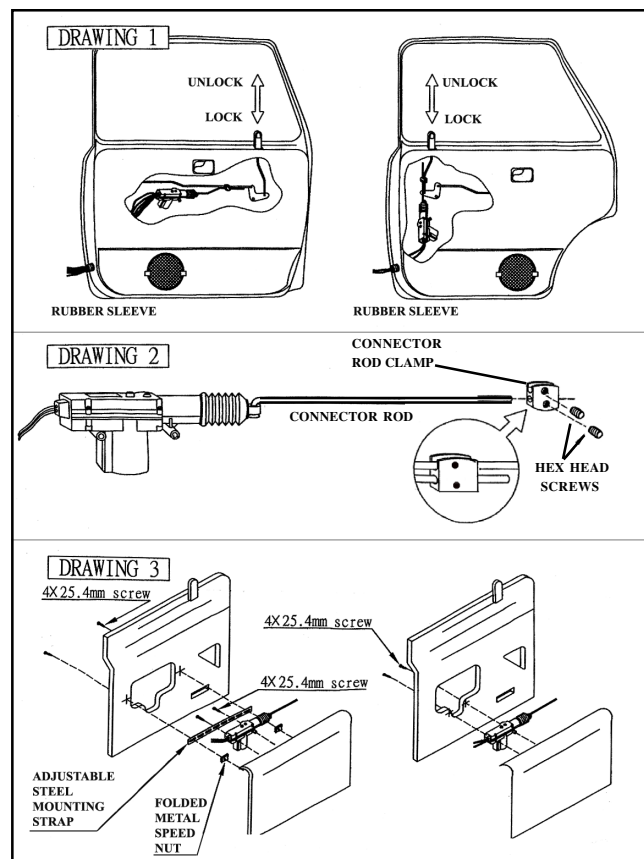
Printed in Taiwan

Form No. 128-6367A

### ACTUATOR/DOOR LOCK INSTALLATION

- 1.) Carefully remove the door panel.
- 2.) Since the adjustable steel mounting strap is optional at this step, you can either attach strap to the door structure (see Drawing #3) and mount actuator/door lock to the strap, or attach actuator/door lock onto the door structure. Both mounting methods must ensure a suitable position is selected that will not hinder the window mechanism and is close enough to operate the existing lock assembly.
- 3.) Slide connector rod onto the end hole of actuator/door lock. Attach-connector rod clamp to the connector rod (see Drawing #2).
- 4.) Set door lock in the unlock position, then tighten connector rod clamp to the existing factory door rod supplied with kit.
- 5.) Pull connector rod until the actuator is fully extended, then tighten connector rod clamp to existing factory door rod.

### INSTALLATION DIAGRAM



## Free Manuals Download Website

<http://myh66.com>

<http://usermanuals.us>

<http://www.somanuals.com>

<http://www.4manuals.cc>

<http://www.manual-lib.com>

<http://www.404manual.com>

<http://www.luxmanual.com>

<http://aubethermostatmanual.com>

Golf course search by state

<http://golfingnear.com>

Email search by domain

<http://emailbydomain.com>

Auto manuals search

<http://auto.somanuals.com>

TV manuals search

<http://tv.somanuals.com>