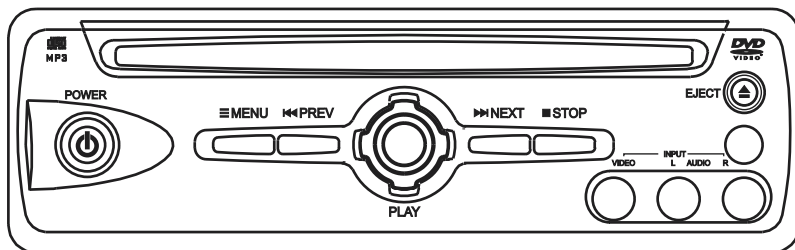


# AUDIOVOX®

AVD300T

**SLOT-IN DVD PLAYER WITH BUILT-IN TV TUNER**



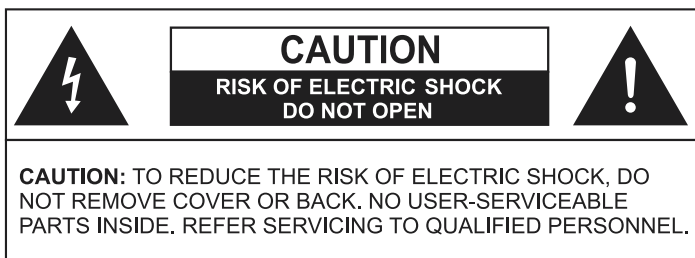
**Owner's Manual**

## A. Welcome

Thank you for choosing the AVD300T DVD Player. The AVD300T is designed to optimize the enjoyment of your favorite DVDs in the mobile environment. This DVD Player is constructed to provide years of reliable, trouble-free service. Please read this manual thoroughly prior to operating the player and save it for future reference.

## B. Precautions

### EXPLANATION OF GRAPHIC SYMBOLS



The lighting flash with arrowhead symbol within an equilateral triangle, is intended to alert the user to the presence of uninsulated 'dangerous voltage' within the product's enclosure that may be of sufficient magnitude to constitute risk of electric shock.



The exclamation point within an equilateral triangle is intended to alert the user to the presence of important operating and maintenance (servicing) instructions in the literature accompanying the appliance.

### WARNING:

TO REDUCE THE RISK OF FIRE OR ELECTRIC SHOCK. DO NOT EXPOSE THIS DEVICE TO MOISTURE.

## **SAFETY PRECAUTION**

For safety reasons do not allow children to unfasten seat-belts to change video media or make any adjustments to the system. Enjoy your entertainment system but always remember the safety of all passengers is the number one priority.

## **IMPORTANT NOTICE**

It is unlawful in most states for a person to drive a motor vehicle which is equipped with a television viewer or screen that is located in the motor vehicle at any point forward of the back of the driver's seat, or that is visible, directly or indirectly, to the driver while operating the vehicle. In the interest of safety, this system should never be installed where it will be visible, directly or indirectly, by the operator of the motor vehicle.

### **1. OBJECT AND LIQUID**

Do not insert objects of any kind into the system through its openings; do not spill or spray liquid on or into the system (this may result in a fire or electric shock). Do not place heavy objects on the unit. To ensure proper ventilation and proper operation, never cover or block the slots and openings.

### **2. DISASSEMBLE**

Do not attempt to disassemble the unit. There is a risk of electric shock and/or exposure to Laser Radiation. Contact qualified service personnel if your system is in need of repair.

### **3. CLEANING UNIT**

When cleaning, make sure the system is unplugged from the power source. Do not use any solvents or cleaning solutions. Clean the DVD player using a lightly dampened lint free cloth to wipe the unit.

#### **4. DISC**

Do not use irregularly shaped discs such as heart or star-shaped discs as they may cause the unit to malfunction. Do not stick paper, tape or glue on the disc. Do not expose the disc to direct sunlight or heat sources. Do not touch the surface of the disc. Handle the disc by its edges. Clean the disc by wiping the disc from the center out with a soft lint free cleaning cloth. Remove the disc from the unit and store it in its case after playing. Some playback operations of discs may be intentionally fixed by software producers. The unit plays discs according to the disc contents the software producers designed therefore some playback features may not be available. Refer to the instructions supplied with the discs.

#### **5. Powering the DVD Player**

This system **MUST** be powered from a switched (Accessory) power source as indicated on the marking label. Power should be applied to the unit when the ignition key is in the run and/or accessory positions. Use only the supplied power cable provided with this set to avoid electric hazards.

#### **6. Operation**

When the temperature rises dramatically from a very low temperature, moisture may condense inside the AVD300T and cause the DVD player to malfunction. If the AVD300T does not operate properly under these conditions leave the AVD300T turned on for at least 30 minutes for the moisture to evaporate.

## C. Contents

1. Main Unit
2. Remote control with two AAA Batteries
3. Power Cable
4. Two (2) Brackets with four (4) Screws
5. Owner's Manual
6. Power Adaptor\* (4-Pin to 2-Pin) Cable
7. DVRCA \* Adaptor for connection to a second monitor
8. RCA Cables ( Red, Yellow, and White)
9. Remote IR Receiver
- \* For use with 8010730 Accessory Cable

## D. Controls

### Main Unit (Refer to Figure 1)

1. Power Button
2. Menu Button
3. Previous Button
4. Play & Up, Down,  
Left, Right Button
5. Next Button
6. Stop Button
7. Video Input Jack
8. Audio L Input Jack
9. Audio R Input Jack
10. Eject Button
11. Remote Control Sensor
12. DC 12V Power Supply Input
13. IR Input
14. Antenna Input
15. Monitor Output Port 1
16. Monitor Ouput Port 2
17. Video Output Jack
18. Audio L Output Jack
19. Audio R Output Jack

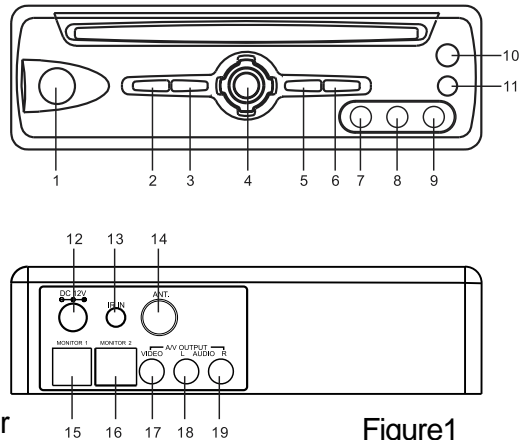


Figure1

## E. Remote Control View (Refer to Figure 2)

- 1) DVD/TV/ AUX Button
- 2) Power Button
- 3) Display Button
- 4) Angle Button
- 5) Subtitle Button
- 6) Repeat Button
- 7) A-B Repeat Button
- 8) Menu Button
- 9) Slow Button
- 10) Pause Button
- 11) Forward Scan Button
- 12) Reverse Scan Button
- 13) Skip+ Button
- 14) Skip- Button
- 15) Auto memory Button
- 16) Channel Up Button
- 17) Zoom Button
- 18) Eject Button
- 19) Numeric Keypad
- 20) Audio Button
- 21) Setup Button (Next)
- 22) Up/Down/Left/Right / Enter Buttons
- 23) Return Button
- 24) Stop Button
- 25) Play Button
- 26) Channel Down Button

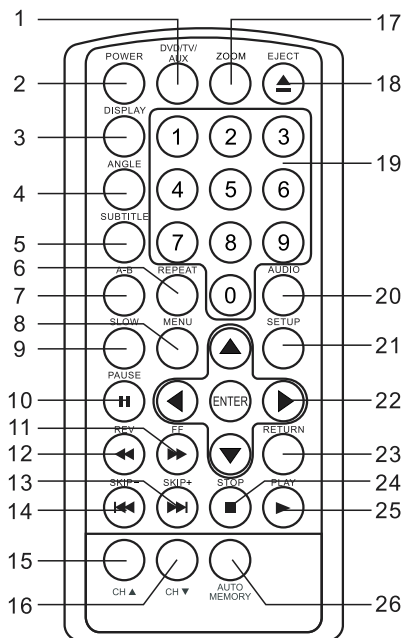


Figure 2

## F. Connections

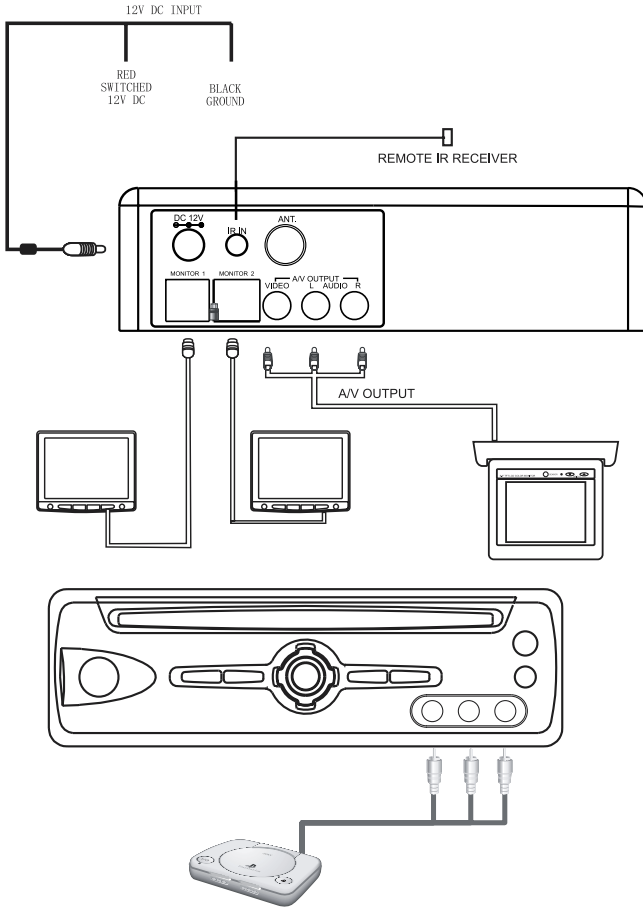


Figure 3

1. Powering Your DVD Player ( Refer to Figure 3)  
Connect the black wire (-) to the vehicle ground. Connect the red wire (+) to a switched (Accessory) 12VDC source. Plug the other end into the 12VDC input jack on the back of the unit.
2. Remote IR Receiver ( Refer to Figure 3)  
Plug the 1/8" jack on the remote IR cable into the IR IN jack on the back of the DVD player. Place the IR receiver anywhere in the vehicle to allow remote control from any location.

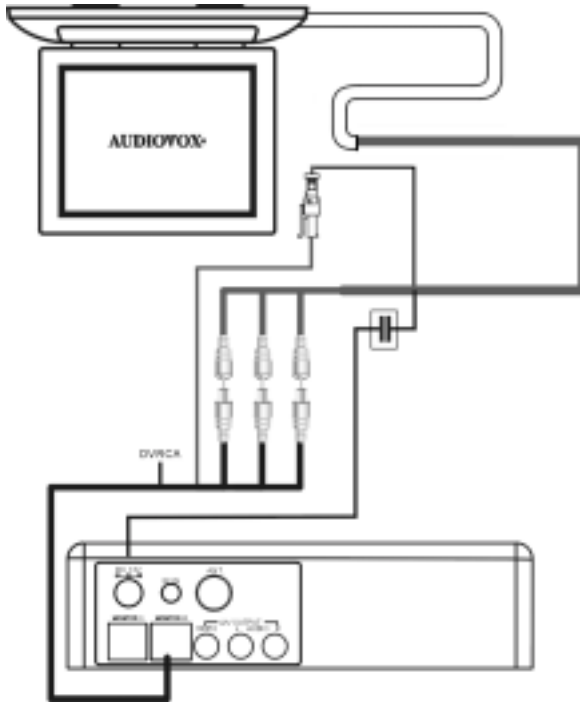


Figure 4

### 3. Connecting to an Audiovox Overhead Monitor

The AVD300T can be connected to Audiovox Overhead monitors with the supplied adaptors (DVRCA and 4 pin to 2 pin power adapter) when using the Audiovox accessory cable (part number 8010730). Plug in the 3 RCA jacks, white (left audio) to white, red (right audio) to red, and yellow (video) to yellow. Connect the IR jacks. Connect the 4 pin to the 2 pin power adapter, 4 pin to the accessory cable and the plug into the AVD300T power jack.

### 4. Connecting to a Monitor

- a. Match the color-coded plugs to the appropriate jacks on the back of the DVD Player A/V OUTPUT jacks: Yellow (video) to Yellow, White (left audio) to White, and Red (right audio) to Red.



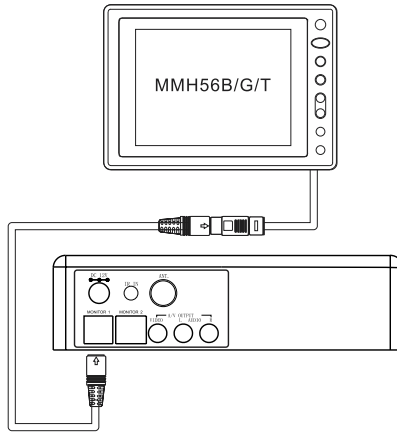


Figure 5

- b. Connect any of the two monitor ports on the back of the DVD player directly to the Movies 2 Go headrest hoods Model MMH56 B/T/G. Power, audio, video and IR signals are supplied through the DIN cable.
  - c. Using the supplied adapter (Part Number DVRCA) the monitor port can be connected to any monitor.
5. Connecting an External Video Source
- To connect a video game or another audio/video source, plug the A/V output jacks into the matching color-coded A/V input jacks on the front of the DVD player. Press the DVD/TV/AUX button on the remote until AUX is displayed on the monitor.

## G. Playing

After connecting power to the unit, press the power button on the main unit momentarily. The power light will increase in brightness. Insert the disc into the slot on the front of the unit, the unit will load the disc and start playing automatically. If there's a disc inside the unit, press the POWER button, the unit will start playing automatically.

## **1. Basic Operation**

POWER	Turn the unit on/off
EJECT	Eject the disc
PLAY	Start Play
SLOW	Play at 1/2, 1/4, 1/8 or 1/16 times speed
PAUSE	Still Picture
STOP	(1 time) Stop at the present playing point / (2 times) Stop playing
NEXT	Go to the next chapter, track or scene during play back
PREVIOUS	Go back to the preceding chapter, track or scene during play back
FORWARD	Scan forward at 2, 4, 8, 16, or 32 times normal speed
REVERSE	Scan backward at 2, 4, 8, 16, or 32 times normal speed
UP/DOWN/LEFT/RIGHT	Used for Menu Navigation
ENTER	Execute item or setting
NUMBERS	Select item, setting, or TV channel
RETURN	Return
MENU	Display the root menu of the disc
REPEAT	Repeat playing title, chapter, or track
A-B	Repeat a specific portion from point A to point B of the disc
DISPLAY	Display information (title, chapter, track, time, etc.).
ANGLE	Change the angles on the scene
SUBTITLE	Select the subtitle language
AUDIO	Select the audio language
ZOOM	Enlarge an image to 2, 3, or 4 times the original
SETUP	Display the setup menu to select and set items, and exit the setup menu.
DVD/TV/AUX	Change sources (DVD, TV and AUX)
AUTO MEMORY	Search channels and store them automatically
CHANNEL UP	Choose the next channel
CHANNEL DOWN	Choose the previous channel

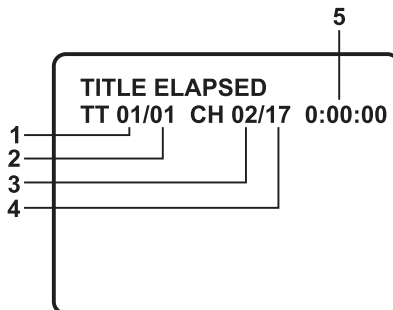
## 2. MENU

A DVD is divided into sections called titles and chapters. When you play a DVD, a root menu of the disc will appear on the screen of your TV or Monitor. Contents of the menu will vary depending on the disc content. Press MENU during playback to display the root menu. Some DVDs only allow you to select disc playback options using the DVD root menu.

## 3. DISPLAY

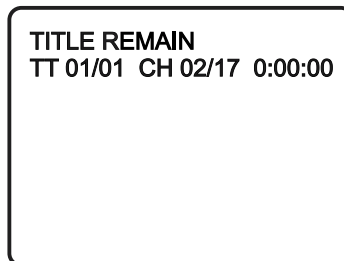
### 1). PLAYING TIME AND REMAINING TIME

- a. During playback press the 'DISPLAY' button to display the current Title Number (1), the total Number of Titles (2), the current Chapter Number (3), the total Number of Chapters (4), and the elapsed Time for the title (5). The heading will disappear automatically after 3 seconds if no other buttons are pressed.



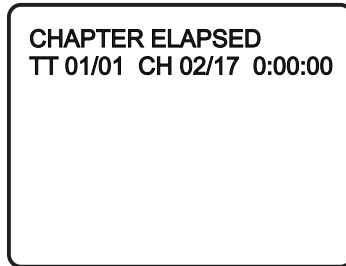
**Title, Chapter Number, and Time Screen Display**

- b. Press 'DISPLAY' again to display the Remaining Time of the title. The heading will disappear automatically in 3 seconds.



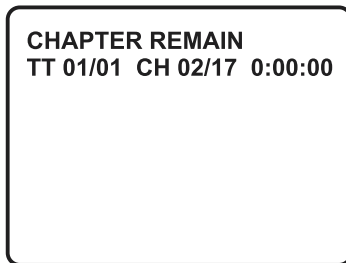
**Title Remaining Time Screen Display**

- c. Press 'DISPLAY' a 3rd time to display the Elapsed Time for the chapter. The heading will disappear automatically in 3 seconds.



### Chapter Elapsed Time Screen Display

- d. Press 'DISPLAY' a 4th time to display the Remaining Time for the chapter. The heading will disappear automatically in 3 seconds.



### Chapter Remaining Time Screen Display

- e. Press 'DISPLAY' a 5th time to exit, 'DISPLAY OFF' will be displayed and will disappear automatically in 3 seconds.

## 2). ANGLE

During playback of a disc, press 'ANGLE' to display the number of the available angles for discs containing multi-angles\*, with the current angle number (1) and the total number of angles (2). Press 'ANGLE' to select another angle, then press again to exit and return to the normal viewing angle. The angle display will disappear automatically if the 'ANGLE' button is not pressed again within 3 seconds.

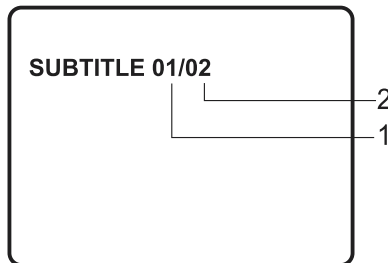
**\*NOTE:** Not all discs contain this feature.



**Angle Screen Display**

### **3). SUBTITLE**

During disc playback press 'SUBTITLE' to select the desired subtitle language\* current Subtitle Language Number (1) and the total Number of Subtitle Languages (2) will be displayed. If there are multiple languages press 'SUBTITLE' again to select another subtitle language. To turn subtitles OFF, press the 'SUBTITLE' button until 'SUBTITLE OFF' is displayed. The Subtitle display will disappear automatically if the 'SUBTITLE' button is not pressed again within 3 seconds.

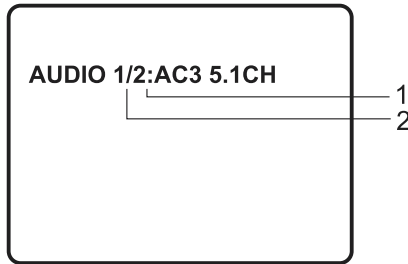


**Subtitle Screen Display**

\* Some DVDs only allow access to this function through the DVD menu.

#### 4). AUDIO

During playback press 'AUDIO' to select the desired audio language \* current Audio Channel Number (1) and the total number of Audio Channels (2) will be displayed. Press AUDIO again to select another audio language. The audio display will disappear automatically if the 'AUDIO' button is not pressed within for 3 seconds.

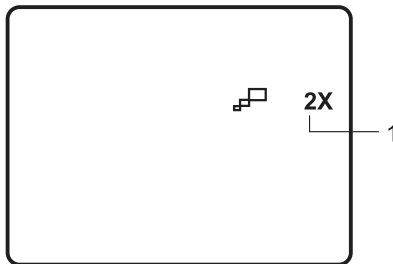


**Audio Language Screen Display**

\* Some DVDs will only allow access to this function through the DVD menu.

#### 5). ZOOM

During playback press 'ZOOM' to enlarge the picture by 2x, 3x or 4X with the current zoom multiple displayed. Press "zoom" once, the picture will be enlarged 2X. Press "zoom a "second time ,the picture will be enlarged 3X. Press "zoom a "3rd time ,the picture will be enlarged 4X. Press "zoom"4th time, the picture will return to normal size.



**ZOOM Screen Display**

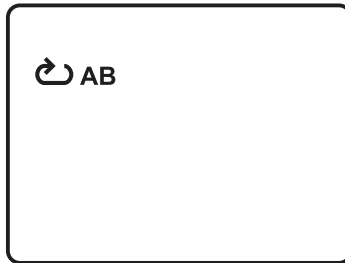
## 6). A-B REPEAT

- a. During playback press 'A-B' to set the Starting Point A.



**A-B Repeat Starting Point Screen Display**

- b. Press 'A-B' a second time to set the Ending Point B and the player will repeatedly play the part between Point A and Point B.

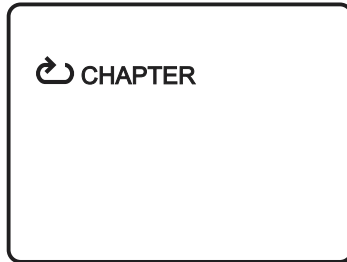


**A-B Repeat Ending Point Screen Display**

- c. Press 'A-B' a third time to cancel A-B repeat and resume normal playback.

## 7). REPEAT

- a. During playback press 'REPEAT' once to repeatedly play the current chapter.



**Chapter Repeat ON Screen Display**

- b. During playback press 'REPEAT' again to repeatedly play the current title.



**Title Repeat ON Screen Display**

- c. During playback press 'REPEAT' a 3rd time to repeat all Chapters and Titles.



**All Repeat ON Screen Display**



d. Press "REPEAT" a 4th time, to resume normal play.

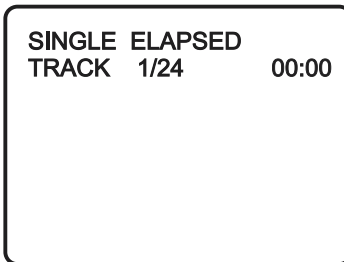


**Repeat Off Screen Display**

#### **4. PLAYING AUDIO CDS**

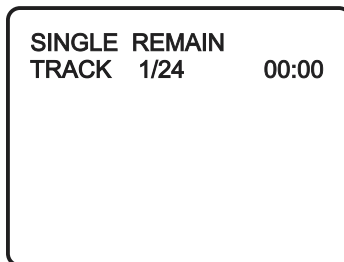
When playing an audio CD press the DISPLAY button on the remote to view time information. The options below show you what information is available using this function.

1). The current track and playing time of that track will be displayed on the screen.



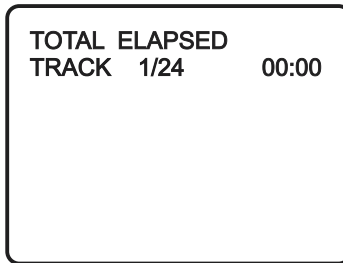
**SINGLE ELAPSED Screen Display**

2). Press 'DISPLAY' one time and *SINGLE REMAIN* appears along with the current track playing and the amount of time left in that track.



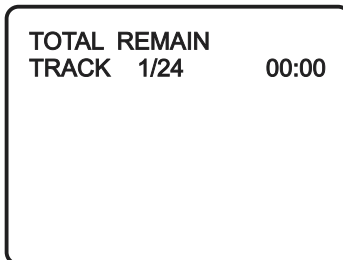
**SINGLE REMAIN Screen Display**

3). Press 'DISPLAY' twice and *TOTAL ELAPSED* appears along with the current track playing and the total time that the CD has been playing.



### **TOTAL ELAPSED Screen Display**

4). Press 'DISPLAY' three times and *TOTAL REMAIN* appears along with the current track playing and the amount of time remaining on the CD.



### **TOTAL REMAIN Screen Display**

5). Press 'DISPLAY' four times and *DISPLAY OFF* will appear momentarily then disappear. The disc time information will no longer be displayed.

## **USING THE REPEAT FEATURE**

The default mode for the Repeat feature is OFF. Pressing REPEAT consecutively changes the repeat options:

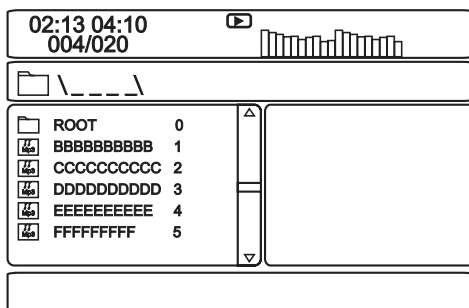
- *TRACK*- repeats the track that is playing.
- *ALL*- repeats the disc that is playing.
- *OFF*

As you toggle through the options, the repeat option changes. The selected repeat option loops repeatedly until its turned off.

## 5. PLAYING MP3 DISCS

MP3 is a digital audio format. An audio CD-quality song is compressed into the MP3 format with no significant loss of audio quality. CD-R /RW discs that have been encoded in MP3 format are compatible with this device.

Insert an MP3 and the DVD player will initialize the disc and the directory (folder) will be shown on the TV screen.



### MENU Screen Display

When an MP3 disc is inserted into the unit, the menu screen appears automatically. You can use the menu screen to change folders and songs. The system plays the songs in the order they were burned onto the disc.

1. Press the ▲ or ▼ button to choose a folder from the folder list on the left side of the screen.
2. Press ENTER to select the highlighted folder. All songs available under the selected folder will be listed.
3. Use ▲ or ▼ button to choose a song from the list then press PLAY to play the selected song.

Use the ►► ( NEXT ) button to move to the next song. Press the ◀◀ (PREVIOUS) button to move to the beginning of the song.



## **USING THE REPEAT FEATURE**

The default mode for the Repeat feature is OFF. Pressing REPEAT consecutively changes the repeat options:

- RANDOM(random play)
- SINGLE(play single song only)
- REPEAT ONE(repeat playback of a song)
- REPEAT FOLDER(repeat playback of a specific folder)
- FOLDER (normal playback)

Press REPEAT until folder is displayed and the unit will resume normal playback. As you toggle through the options, the repeat option changes. Selected repeat option loops repeatedly until you turn it off.

## **NOTICE**

- “” icon in front of a file name indicates that this is a folder, not a MP3 file.
- “” icon in front of a file name indicates that this is a MP3 file. During MP3 playback, you cannot access “PLAY MODE”, folders or songs.

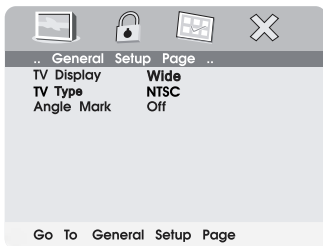
## 6. Playing JPEG file

- 1) Insert the JPEG Disc into tray.
- 2) Select JPEG file by pressing “UP/DOWN” button.
- 3) You can preview the JPEG file by pressing “Play” or “ENTER”.
- 4) Pressing the left or right button will rotate the JPEG in that direction.
- 5) When browsing the photos, you can reverse the photo horizontally by pressing “Up” key, or you can reverse the photos vertically by pressing “Down” key.
- 6) When you browse the JPEG file, press “display”, there will be different refresh mode below.
  - a. Press “display” first time, “WIPE TOP” display on the screen, the picture will refresh from top to bottom.
  - b. Press “display” 2nd time, “WIPE BOTTOM” will display on the screen, the picture will refresh from bottom to top.
  - c. Press “display” 3rd time, “WIPE LEFT” will display on the screen, the picture will refresh from left side to right side.
  - d. Press “display” 4th time, “WIPE RIGHT” will display on the screen, the picture will refresh from right side to left side.
  - e. Press “display” 5th time, “DIAGONAL WIPE LEFT TOP” will display on the screen, the picture will refresh from left top to right bottom.
  - f. Press “display” 6th time, “DIAGONAL WIPE RIGHT TOP” will display on the screen, the picture will refresh from right top to left bottom.
  - g. Press “display” 7th time, “DIAGONAL WIPE LEFT BOTTOM” will display on the screen, the picture will refresh from left bottom to right top.
  - h. Press “display” 8th time, “DIAGONAL WIPE RIGHT BOTTOM” will display on the screen, the picture will refresh from right bottom to left top.
  - i. Press “display” 9th time, “EXTEND FROM CENTER H” will display on the screen, the picture will refresh from horizontal center to both sides.
  - j. Press “display” 10th time, “EXTEND FROM CENTER V” will display on the screen, the picture will refresh from vertical center to both sides.

- k. Press “display” 11th time, “COMPRESS TO CENTER H” will display on the screen, the picture will refresh from top and bottom to center.
  - l. Press “display” 12th time, “COMPRESS TO CENTER V” will display on the screen, the picture will refresh from right and left to center.
  - m. Press “display” 13th time, “WINDOW H” will display on the screen, the picture will refresh from four window’s top side to bottom side.
  - n. Press “display” 14th time, “WINDOW V” will display on the screen, the picture will refresh from four window’s left side to right side.
  - o. Press “display” 15th time, “WIPE FROM EDGE TO CENTER” will display on the screen, the picture will refresh from 4 edges to center.
  - p. Press “ display”16th time, “MOVE IN FROM TOP”will display on the screen,the picture will refresh slower than normal.
- 7) Press “Stop” to browse the JPG file, “SLIDE SHOW” “MENU” will display on the screen.
  - 8) When browsing the picture, press “Stop” and thumbnail size picture will be diplayed. You can select the desired picture by using the UP/DOWN/LEFT/RIGHT/ENTER keys.
  - 9) Press “Play” or “ENTER”, to preview a picture.
  - 10) You can return the root Menu by pressing “MENU” key.

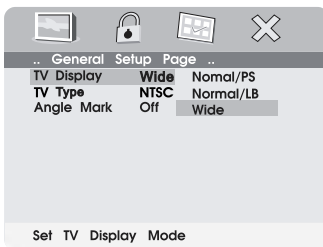
## 7. SETUP

Press 'SETUP' to display the Main screen of the SETUP Menu on the screen. Press 'SETUP' again to exit the SETUP Menu and the unit will resume it's last playback mode.



**Figure 31. Main SETUP Menu Screen**

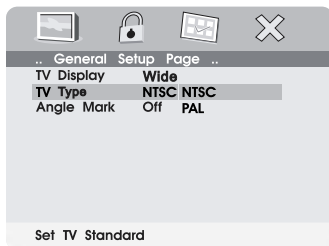
- 1) Press "Setup", the 'GENERAL SETUP' will display on screen.
  - a. Select TV DISPLAY using UP/DOWN, and then press RIGHT to enter the submenu. Select the TV display mode on the screen using UP/DOWN, and press ENTER to confirm the setting. Press LEFT to return.



**Figure 32. TV DISPLAY Screen Display**

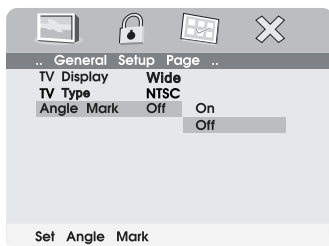
- \* NORMAL/PS: When the player is connected to a normal TV, and a wide picture is shown on the full screen.
- \* NORMAL/LB: When the player is connected to a normal TV, and a wide picture is shown on the screen with a black strip at both the top and bottom of the screen.
- \* WIDE: When the player is connected to a wide screen TV, a wide picture is shown on the full screen.

- b. Select 'TV Type' using UP/DOWN, and then press the RIGHT button to enter the submenu. Choose TV Type using UP/DOWN and then press ENTER to confirm the setting. Press the LEFT button to return.



**Figure 33. TV Type Screen Display**

- c. Select 'ANGLE MARK' using UP/DOWN, and then press the RIGHT button to enter the submenu. Choose Angle Mark on or off displayed on the screen using the UP/DOWN and then press ENTER to confirm the setting. Press the LEFT button to return.



**Figure 34. ANGLE MARK Screen Display**

- \* ON: The screen will show angle mark.  
(\*If angle option is available).
- OFF: The screen will not display the Angle Mark



- 2) When no disc inside the player, select “password” using LEFT/RIGHT, then press ENTER. Press right to enter the submenu .

### **Figure 42. PASSWORD CHANGE Menu**

Press ‘ENTER’ to enter the Password Change Page. Input the Old Password or the Default Password, the New Password, and the Confirmed New Password. Press ‘ENTER’ to confirm the change.

**NOTE:** For 1st time use the default password is 3308.

### **Figure 43. PASSWORD VERIFY Input Screen Display**

**NOTE:** The Default Password is **3308**. This password is always effective even after you have selected your own password and changed it. To avoid the possibility of others using the default password to set the parental level and change the password, you can record this default password in another area and delete it from this manual. Some discs can be limited depending on the age of users while some discs can not.

- 3) When no disc inside the player select “Preference Page” by using LEFT/RIGHT, press ENTER to enter the Preference page.

### **Figure 36. Preference Page Menu Screen**

- a. Select “Audio” using the UP/DOWN buttons, then press right to enter the submenu. You can change the Audio Language by pressing UP/DOWN buttons. After choosing the proper Audio Language, press ENTER or LEFT back to return to the root menu.

### **Figure 37. Preference Audio Language**

- b. Select “Subtitle” using the UP/DOWN buttons, then press right to enter the submenu. You can change the Subtitle by pressing the UP/DOWN buttons.

### **Figure 38. Preference Subtitle Language**

After choosing the proper “Subtitle” Setting, press Enter or LEFT to return to the root Menu. 26

- c. Select “Disc Menu” by using the UP/DOWN buttons, then press right to enter the submenu. You can change the Disc Menu Language using the UP/DOWN buttons.

### **Figure 39. Preference Disc Menu Language**

After choosing the proper “Disc Menu” Setting, press Enter or LEFT return the root Menu.

- d. Select “Parental” using the UP/DOWN buttons, then press right to enter the submenu. You can change the Parental Rating using the UP/DOWN buttons.

### **Figure 40. Parental Preference Screen Display**

After choosing the “Parental” Setting, press Enter or LEFT to return to the root Menu

- e. Select ‘DEFAULTS’ using the UP/DOWN buttons, then press RIGHT to enter the submenu. Press ENTER to make the setting return to the factory-set mode.

**NOTE:** The parental setting is not affected by the default function.

### **Figure 41. Loading Factory Setting**

## H. Watching TV

1. With power applied to the system, select the TV mode by pressing the DVD/TV/AUX button on the remote control.
2. Press AUTO MEMORY on the remote control to automatically search and store active channels. The unit will start to play the first channel automatically.
3. Press CHANNEL UP/DOWN or the number buttons to get to your desired TV channels.

## I. Specification

Supported media	DVD / CD / MP3/JPEG
Signal format system	NTSC/PAL
Receivable TV signal format system	NTSC
DVD Video format	Horizontal 720 pixel, vertical 480 pixel
Video output	1.0 Vp-p/75 Ohm
Audio output	1.2 V to 1.8 V
Signal-to-noise ratio	More than 60 dB
Harmonic distortion	Less than 60 dB
Dynamic range	More than 70 dB
Wow and flutter	Beyond measurable Limits
Power source	DC 12 V
Power consumption	Less than 1W in stand-by mode; and less than 12W in use
Operating temperature	0°C (32°F) to +40°C (104°F)
Storage temperature	-20°C (-4°F) to +60°C (140°F)
Operating humidity	5% to 95%
Dimensions (W x H x D)	7.45 x 6.70 x 2.05 inches (189 x 170 x 52 mm)
Weight	2.4 lbs (1.1 kg)



## 90 DAY LIMITED WARRANTY

*Applies to Audiovox Video Products*

AUDIOVOX ELECTRONICS CORP. (the Company) warrants to the original retail purchaser of this product that should this product or any part thereof, under normal use and conditions, be proven defective in material or workmanship within 90 days from the date of original purchase, such defect(s) will be repaired or replaced with reconditioned product (at the Company's option) without charge for parts and repair labor.

To obtain repair or replacement within the terms of this Warranty, the product is to be delivered with proof of warranty coverage (e.g. dated bill of sale), specification of defect(s), transportation prepaid, to the Company at the address shown below.

This Warranty does not extend to the elimination of externally generated static or noise, to correction of antenna problems, to costs incurred for installation, removal or reinstallation of the product, or to damage to tapes, discs, speakers, accessories, or electrical systems.

This Warranty does not apply to any product or part thereof which, in the opinion of the Company, has suffered or been damaged through alteration, improper installation, mishandling, misuse, neglect, accident, or by removal or defacement of the factory serial number/bar code label(s). THE EXTENT OF THE COMPANY'S LIABILITY UNDER THIS WARRANTY IS LIMITED TO THE REPAIR OR REPLACEMENT

PROVIDED ABOVE AND, IN NO EVENT, SHALL THE COMPANY'S LIABILITY EXCEED THE PURCHASE PRICE PAID BY PURCHASER FOR THE PRODUCT.

This Warranty is in lieu of all other express warranties or liabilities. ANY IMPLIED WARRANTIES, INCLUDING ANY IMPLIED WARRANTY OF MERCHANTABILITY, SHALL BE LIMITED TO THE DURATION OF THIS WRITTEN WARRANTY. ANY ACTION FOR BREACH OF ANY WARRANTY HEREUNDER INCLUDING ANY IMPLIED WARRANTY OF MERCHANTABILITY MUST BE BROUGHT WITHIN A PERIOD OF

15 MONTHS FROM DATE OF ORIGINAL PURCHASE. IN NO CASE SHALL THE COMPANY BE LIABLE FOR ANY CONSEQUENTIAL OR INCIDENTAL DAMAGES FOR BREACH OF THIS OR ANY OTHER WARRANTY, EXPRESS OR IMPLIED, WHATSOEVER. No person or representative is authorized to assume for the Company any liability other than expressed herein in connection with the sale of this product.

Some states do not allow limitations on how long an implied warranty lasts or the exclusion or limitation of incidental or consequential damage so the above limitations or exclusions may not apply to you. This Warranty gives you specific legal rights and you may also have other rights which vary from state to state.

**U.S.A. :** AUDIOVOX ELECTRONICS CORPORATION, 150 MARCUS BLVD.,  
HAUPPAUGE, NEW YORK 11788 1-800-645-4994

**CANADA :** CALL 1-800-645-4994 FOR LOCATION OF WARRANTY STATION  
SERVING YOUR AREA

128-5556C



For Customer Service  
Visit Our Website At

**[www.audiovox.com](http://www.audiovox.com)**

Product Information, Photos,  
FAQ's Owner's Manuals

## Free Manuals Download Website

<http://myh66.com>

<http://usermanuals.us>

<http://www.somanuals.com>

<http://www.4manuals.cc>

<http://www.manual-lib.com>

<http://www.404manual.com>

<http://www.luxmanual.com>

<http://aubethermostatmanual.com>

Golf course search by state

<http://golfingnear.com>

Email search by domain

<http://emailbydomain.com>

Auto manuals search

<http://auto.somanuals.com>

TV manuals search

<http://tv.somanuals.com>