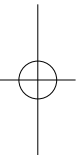


lenovo

W770
Wireless Headset

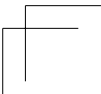
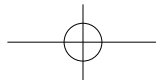
lenovo[®]

www.lenovo.com



Product name: Lenovo Wireless Headset W770
Product standard: Q/HDLCS103-2009
Manufacturer: Lenovo (Beijing) Limited
Address: No.6 Chuang Ye Road, Shangdi Information
Industry Base, Haidian District, Beijing, China
Zip Code: 100085
Lenovo website: www.lenovo.com

Lenovo (Beijing) Limited





I. PRODUCT INTRODUCTION

Dear customers,

Thank you for selecting high-quality electronic product offered by Lenovo. This headset is manufactured with internationally advanced 2.4 GHz wireless audio transmission technology. This technology is characterized by stable signal (easily avoiding the interference of other signals with high frequency hopping anti-interference technology), long transmission distance and Hi-fi stereo.

This headset consists of one USB Dongle and one receiver (headset). Its in-built Lithium polymer battery of 380 mAh provides a standby time of 6 hours, allowing you enjoy the music and chat online freely.

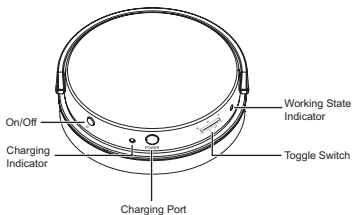
OS requirement: WIN XP, WIN 2000, WIN 7, VISTA, Apple MAC

Compatible players: MediaPlayer, RealPlayer, etc.

II. INTRODUCTION OF HEADSET CONNECTION

1. First, connect the USB Dongle to the USB interface of the computer. The computer will automatically recognize the USB Dongle. After it prompts that the device installation is completed, the device can be used normally (with the computer providing tips for first use).
2. Turn on the headset. After it completes connection with the USB Dongle, the headset can be used normally.

III. HEADSET BUTTONS



1. On/Off

- a. **Power On:** By pressing this button for over 1 second in power off state, blue LED lamp is constantly on, and the headset is started.
- b. **Power Off:** By pressing this button for over 1 second and then releasing it in power on or playing state, blue LED lamp is off, and the headset is powered off.

2. Toggle switch

- a. **Pause/Play:** In playing state, press middle part of this button to pause, and press middle part of this button again to resume the playing.
- b. **Previous/Next:** Press this button and hold for a moment to play the previous/next song.
- c. **Volume +/-:** Toggle this button upwards/downwards to increase/decrease the volume.

IV. INDICATOR LAMP

1. Red LED lamp

Red LED lamp is the charging indicator. It lights on when the device is charged, and is off when the charging completes (or low level lighting).

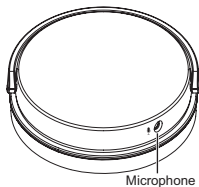
2. Blue LED lamp

Blue LED lamp is the working state indicator.

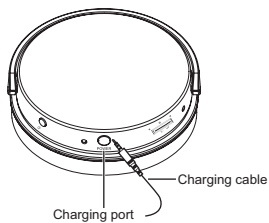
- When power on, this lamp is on indicating the device works normally;
- This lamp is off when the device is powered off or the battery is out of power.

V. MICROPHONE

The microphone is hidden multi-directional microphone, providing superior gaming and chatting experience.



VI. CHARGING INSTRUCTIONS



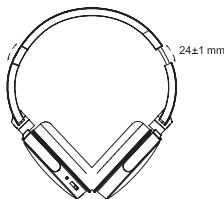
1. Connect 3.5 mm charging plug with the headset first, and connect USB connector of the charging cable with USB port of the computer or USB port of dedicated charger. Red LED lamp is on and the device enters the charging state.
2. When the charging is completed, red LED lamp is off. You could just disconnect the charging cable.



Notes:

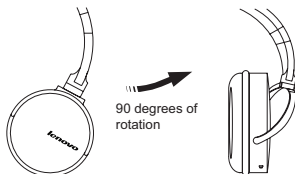
- This headset is equipped with inbuilt irremovable charging battery. Please do not remove the battery to avoid the damage to the headset.
- The charging time of the headset battery for the first time should be 12 - 24 hours to activate the best operating state of the battery. Later on, the charging time will be 2 - 3 hours (please do not charge the device for over 24 hours to avoid the damage to the service life of the battery).
- This 3.5 mm plug can only be used for connecting the charging port of over W770, but cannot connect the audio port of the audio device such as PC.

VII. WEARING INSTRUCTIONS



1. Please distinguish the left and right side of the headset when wearing it: "L" on the bracket indicates the left side, while "R" indicates the right side.
2. Both sides of the headset are equipped with collapsible headphones. The length can be adjusted accordingly to make you enjoy the music comfortably! The stretched length is 24±1 mm.

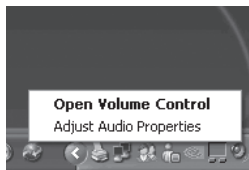
VIII. ROTATING EAR PAD



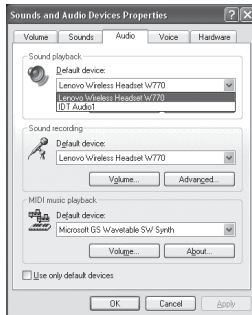
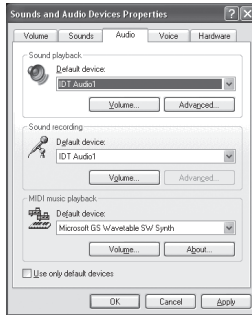
IX. FAQs

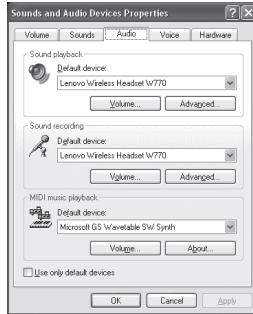
No sound can be heard

1. Check whether the USB Dongle has been plugged in USB port of the computer, and the microphone has been powered on;
2. Adjust the volume with the toggle switch on the headset;
3. Close and reopen the multimedia player;
4. Check the headset power and charge it if low;
5. Check whether the sound playback is switched to the wireless headset. Some systems may not switch the sound automatically, so please follow the steps below:
In XP system
 - a. Right click the voice controller in the Task Manager, and select Adjust Audio Properties.



- b. Select the Audio Properties and check whether the default sound playback device is "Lenovo Wireless Headset W770". If not, click on "Lenovo Wireless Headset W770" to set it as the default value, and then restart the player to switch the sound over.



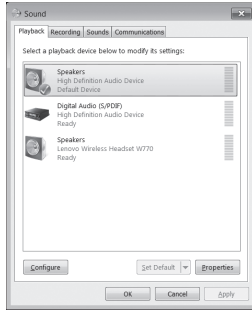


In WIN7 system

- a. Right click the voice controller in the Task Manager, and select the Playback Devices option as shown by the arrows in the picture below.



- b. Check whether the default device is "Lenovo Wireless Headset W770", and if not, click on the speaker Lenovo Wireless Headset W770 and set it as the default value to switch the sound over.



X. PRODUCT PARAMETER

Headset:

Drive unit	2 x 40 mm
Frequency response	20Hz ~ 20KHz
Impedance	32Ω±15% @ 1kHz
Sensitivity (SPL)	103±3dB/1mW @ 1kHz
Signal to noise ratio	65dB
Working voltage	3.7V
Working current	58mA
Battery capacity	380mAh
Continuous working time	6H
Charging time	2.5H
Input power	20mW
Maximum input power	45mW
Net weight of headset	160g
Net weight of USB Dongle	6g

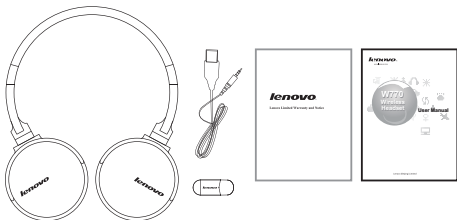
Microphone:

Frequency response	100Hz ~ 10kHz
Impedance	2.2kΩ±10% @ 1kHz
Sensitivity	-38±2dB @ 1kHz 0dB=1V/PA
Signal to noise ratio	55dB

USB Dongle specification:

Working voltage	5V
Working current	55mA
Transmitting power	<+6dBm
Transmitting range	10M
Modulation mode	GFSK
Frequency range	2404MHz ~ 2476MHz
Interface	USB

XI. PACKAGE CONTENTS



- Wireless headset
- USB Dongle
- User Manual
- USB charging cable
- Warranty and notice manual

XII. HEARING PROTECTION

Suggestion for preventing the hearing damage:

1. When using the headset, too high volume may cause the hearing loss.
2. Please adjust the volume as appropriate: adjust the volume to the lowest level, open the player, increase the volume gradually until you feel comfortable in hearing and definition is not distorted.
3. If the dialog and other similar ambient noise can be heard without interference, the volume is appropriate.
4. Adjust the volume to comfortable level and keep it. In case of the tinnitus, discomfort or sound distortion, please decrease the volume or stop the listening, and check your acoustic state.

XIII. SAFETY INSTRUCTION

Please read all warnings and instructions carefully.

1. Do not use this headset near the water source to prevent water from entering the headset or damaging the headset function.
2. Install/use this headset according to the instructions of the manufacturer.
3. Keep this headset away from fire (such as flaming candle).
4. Do not install this headset near the heat source (including the heater, heat ventilating devices or other heat-producing devices).
5. This headset can only be used with the accessories specified by the manufacturer.
6. This headset must be repaired by the qualified personnel.



Warning: Wireless USB Dongle will produce electromagnetic signal, so use it carefully in places where the heart pacemaker or related medical device is used.

XIV. FCC NOTE

Headset model: W770

CMIT ID: 2011DP5808

FCC ID: A5MW770

USB Dongle model: WD770-B

CMIT ID: 2011DP5809

FCC ID: A5MWD770-B

Federal Communications Commission Declaration of Conformity

This equipment has been tested and found to comply with the limits for a Class B digital device, pursuant to Part 15 of the FCC Rules. These limits are designed to provide reasonable protection against harmful interference in a residential installation. This equipment generates, uses and can radiate radio frequency energy and, if not installed and used in accordance with the instructions, may cause harmful interference to radio communications. However, there is no guarantee that interference will not occur in a particular installation. If this equipment does cause harmful interference to radio or television reception, which can be determined by turning the equipment off and on, the user is encouraged to try to correct the interference by one or more of the following measures:

- Reorient or relocate the receiving antenna.
- Increase the separation between the equipment and receiver.
- Connect the equipment into an outlet on a circuit different from that to which the receiver is connected.
- Consult the dealer or an experienced radio/TV technician for help.

Lenovo is not responsible for any radio or television interference caused by using other than recommended cables and connectors or by unauthorized changes or modifications to this equipment. Unauthorized changes or modifications could void the user's authority to operate the equipment.

This device complies with Part 15 of the FCC Rules. Operation is subject to the following two conditions: (1) this device may not cause harmful interference, and (2) this device must accept any interference received, including interference that may cause undesired operation.

Responsible Party:
Lenovo (United States) Incorporated
1009 Think Place-Building One
Morrisville, NC 27560
Telephone: 1-919-294-5900



RF Exposure Statement

The radiated energy from the Lenovo W770 Wireless Headset conforms to the FCC limit of the SAR (Specific Absorption Rate) requirement set forth in 47 CFR Part 2 section 1093.

XV. Notices for India

Headset ETA No.: 1768/2012/WRLO

Dongle ETA No.: 1769/2012/WRLO

Free Manuals Download Website

<http://myh66.com>

<http://usermanuals.us>

<http://www.somanuals.com>

<http://www.4manuals.cc>

<http://www.manual-lib.com>

<http://www.404manual.com>

<http://www.luxmanual.com>

<http://aubethermostatmanual.com>

Golf course search by state

<http://golfingnear.com>

Email search by domain

<http://emailbydomain.com>

Auto manuals search

<http://auto.somanuals.com>

TV manuals search

<http://tv.somanuals.com>