

Lenovo IdeaPad S9/S10 User Guide v2.0

lenovo

ideapad

Note

Before using this information and the product it supports, be sure to read the following:

- Chapter 6. Safety, use, and care information on page 59.
- Appendix D. Notices on page 124.
- *OneKey Rescue System User Guide* included in the package with this publication.

Second Edition (February 2009)

© Copyright Lenovo 2009. All rights reserved.

U.S. GOVERNMENT USERS – RESTRICTED RIGHTS: Our products and/or services are provided with RESTRICTED RIGHTS. Use, duplication or disclosure by the Government is subject to the GSA ADP Schedule contract with Lenovo, if any, or the standard terms of this commercial license, or if the agency is unable to accept this Program under these terms, then we provide this Program under the provisions set forth in Commercial Computer Software–Restricted Rights at FAR 52.227-19, when applicable, or under Rights in Data-General, FAR 52.227.14 (Alternate III).

ENERGY STAR model information



ENERGY STAR® is a joint program of the U.S. Environmental Protection Agency and the U.S. Department of Energy aimed at saving money and protecting the environment through energy efficient products and practices.

Lenovo® is proud to offer our customers products with an ENERGY STAR compliant designation. Lenovo computers of the following machine types, if the ENERGY STAR mark is affixed, have been designed and tested to conform to the ENERGY STAR 4.0 program requirements for computers.

- 20013, 20015
- 4067, 4231

By using ENERGY STAR compliant products and taking advantage of the power-management features of your computer, you reduce the consumption of electricity. Reduced electrical consumption contributes to potential financial savings, a cleaner environment, and the reduction of greenhouse gas emissions.

For more information about ENERGY STAR, visit <http://www.energystar.gov>.

Lenovo encourages you to make efficient use of energy an integral part of your day-to-day operations. To help in this endeavor, Lenovo has preset the following power-management features to take effect when your computer has been inactive for a specified duration:

Table 1. ENERGY STAR power-management features, by operating system

Windows® XP
<ul style="list-style-type: none">• Turn off monitor: After 10 minutes• Turn off hard disks: After 30 minutes• System standby: After 20 minutes• System hibernates: After 2 hours

To awaken your computer from system standby mode, press any key on your keyboard. For more information about these settings, refer to your Windows Help and Support information system.

Explanation of Hard Disk Capacity

Dear user,

While using your computer, you may discover that the nominal hard disk capacity indicated is somewhat different from the disk capacity displayed by the operating system. For example, a nominal 80GB hard disk will appear as less than 80GB in the operating system. This discrepancy is not an error in hard disk installation nor any other problem, but a normal phenomenon of computers. This phenomenon is primarily due to the following reasons:

I. Different standards used by the manufacturer and operating system when calculating hard disk capacity

Hard disk manufacturers use a radix of 1000, i.e. 1G = 1,000MB, 1MB = 1,000KB, 1KB = 1,000 bytes. However, when identifying hard disk capacity, operating systems use a radix of 1024, i.e. 1GB = 1,024MB, 1MB = 1,024KB, 1KB = 1,024 bytes. The standard adopted by your computer is that of the hard disk manufacturers. Since the standards adopted by the hard disk manufacturer and operating system are different, the hard disk capacity displayed by the operating system will be different from the nominal hard disk capacity.

For example, if the hard disk is nominally X G, even when it is completely empty, the capacity displayed by the operating system will be:

$$X \times 1000 \times 1000 \times 1000 / (1024 \times 1024 \times 1024) \approx X \times 0.931 \text{ G}$$

If a portion of the hard disk space has been used for some specific purpose, then the capacity indicated by the operating system will be even less than $X \times 0.931$ G.

II. A portion of the hard disk space is used for specific purposes

Lenovo computers come with preinstalled OneKey Rescue System, so the hard disk has a special portion partitioned before delivery, which is used to store hard disk mirror and OneKey Rescue System program files. The size of the reserved space for this partition varies according to the model, operating system and software of the computer. For the sake of safety, this partition is not evident, which is commonly referred to as a “hidden partition”.

In addition, after the hard disk is partitioned or formatted, the system will assign a certain amount of hard disk space for the system files.

For the above reasons, the available hard disk space indicated by the operating system is always less than the computer’s nominal hard disk capacity.

Contents

Chapter 1. Getting to know your computer	1
Top view	1
Left-side view	3
Right-side view	4
Front view.....	5
Bottom view	6
Chapter 2. Using your computer	8
Putting your computer to standby or shutting it down.....	8
Using the touchpad	10
Using the keyboard	11
Using memory cards (purchased separately)	15
Using the integrated camera.....	16
Using the Internet.....	17
Securing your computer.....	25
Installing device drivers	31
Using battery and AC adapter	31
Chapter 3. Using external devices	36
Connecting a universal serial bus (USB) device	36
Connecting an ExpressCard/34 device (specific models only)....	38
Connecting an external display	39
Connecting a headphone and audio device	40
Connecting an external microphone.....	41
Connecting to <i>Bluetooth</i> enabled devices.....	42
Chapter 4. Troubleshooting	43
Frequently asked questions	43
Troubleshooting.....	45
Chapter 5. Getting help and service	54
Getting help and service	54
Getting help on the Web.....	55
Calling the customer support center	55
Getting help around the world	58

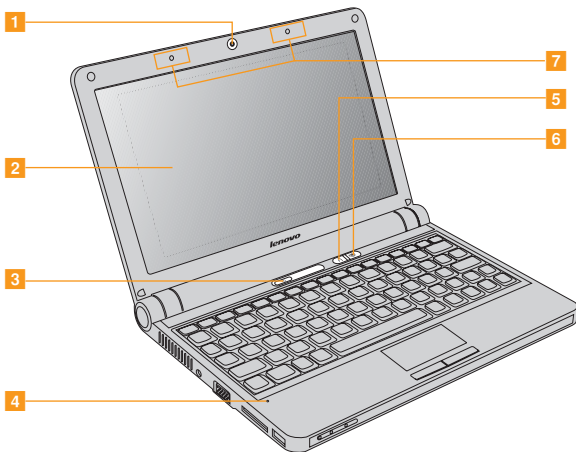
Contents

Chapter 6. Safety, use, and care information.....	59
Important safety information...	59
Caring your computer	78
Accessibility and comfort	86
Maintenance.....	89
Chapter 7. Using Linpus Linux Lite	93
Using Linpus Linux Lite	93
Appendix A. Lenovo Limited Warranty	107
Warranty information	115
Lenovo warranty service telephone numbers	119
Appendix B. Customer replaceable units (CRUs).....	121
Appendix C. Specifications	122
Specifications	122

Appendix D. Notices	124
Notices	124
Wireless related information.....	127
Electronic emissions notices ...	129
WEEE and recycling statements.....	135
EU WEEE Statements	136
Japan Recycling Statements	137
Notice for Users in the U.S.A.	139
Notice on deleting data from your hard disk	139
Trademarks	141
Index.....	142

Chapter 1. Getting to know your computer

■ ■ Top view

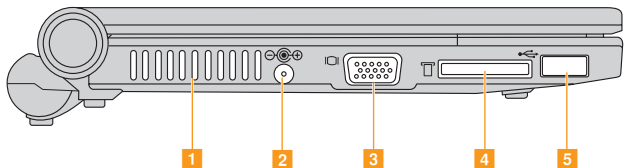


* The illustrations in this manual may differ from the actual product.
Please refer to the actual product.

Chapter 1. Getting to know your computer

- 1 Integrated camera** 16
- 2 Computer display**
The color display with LED-backlit technology provides clear and brilliant text and graphics.
- 3 Power button**
Use the power button to turn on the computer.
- 4 Microphone (built-in)**
The built-in microphone (with noise reduction) can be used for video conferencing, voice narration, or simple audio recordings.
- 5 OneKey™ Rescue System button (for Windows XP users only)** 14
- 6 Integrated wireless device button**
Use this button to enable/disable the wireless radio of all the integrated wireless devices on your computer.
- 7 Wireless antennae (built-in)**
Depending on your model, at least one set of antenna are built into the display for optimized reception.

Left-side view



1 Fan louvers

The fan louvers allow warm air to exit the computer.

➔ Important:

Make sure that paper, books, clothing, cables or other objects do not block any of the fan louvers or else overheating of the computer may occur.

2 AC power adapter jack

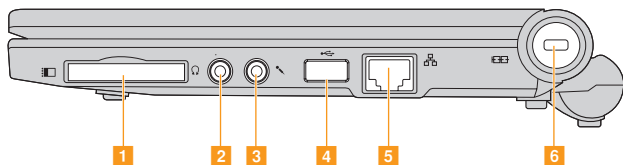
Connect the power adapter here to supply power to the computer and charge the battery pack.

❖ Note:

To prevent damage to the computer and battery pack, use the supplied AC adapter only.

3	VGA port	39
4	Memory card slot	15
5	USB 2.0 port	36

■ ■ Right-side view



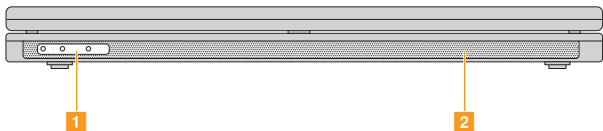
1	ExpressCard® slot (specific models only)	38
2	Headphone jack	40
3	Microphone jack	41
4	USB 2.0 port	36
5	LAN port	17
6	Security keyhole	

Your computer comes with a security keyhole. You can purchase a security cable and lock to fit this keyhole.

❖ **Note:**




Before purchasing any security product, verify that it is compatible with this type of security keyhole.

Front view



1 System status indicators

The system status indicators show the current status of your computer.

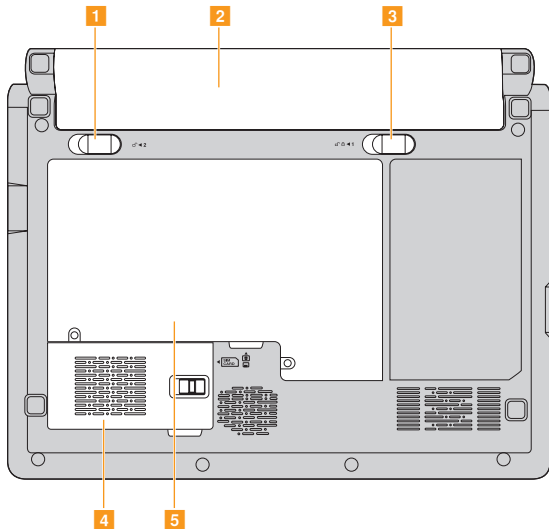
-  Power indicator
-  Battery status indicator
-  Wireless radio status indicator

2 Speakers

Built-in speakers for rich powerful sound.

* The above illustration may differ from the actual product. Please refer to the actual product.

■ ■ Bottom view



* The above illustration may differ from the actual product. Please refer to the actual product.

1 Battery latch - spring loaded

The spring-loaded battery latch keeps the battery pack secured in place. When you insert a battery pack, this latch automatically secures the battery in place. To remove the battery, hold this latch in the unlocked position.

2 Battery pack 34

3 Battery latch - manual

The manual battery latch is used to keep the battery pack secured. Move the manual battery latch to the unlocked position to insert or remove the battery pack. Move the manual latch to the locked position after inserting the battery pack.

4 Expansion slot compartment (specific models only)

The Mobile Broadband module is secured in this compartment.

5 Hard disk drive/Memory (RAM) compartment

Chapter 2. Using your computer

❖ **Note:**

Some instructions in this chapter (such as “Putting your computer to standby or shutting it down” and “OneKey™ Rescue System button”) are only for Windows XP users.

If you are using the Linpus Linux Lite operating system, see “Using Linpus Linux Lite” in Chapter 7.

■ **Putting your computer to standby or shutting it down** —

When you finish working with your computer, you can put it to standby or shut it down.

■ **Putting your computer to standby**

If you will be away from your computer for only a short time, put the computer to standby.

When the computer is in standby, you can quickly wake it and bypass the startup process.

To put the computer to standby, do one of the following.

- Click **Start** and select **Stand By** from **Turn Off Computer**.
- Press **Fn + F1**.

➤ **Warning:**

Wait until the power indicator light starts blinking (indicating that the computer is in standby) before you move your computer. Moving your computer while the hard disk is spinning can damage the hard disk, causing loss of data.

To wake the computer, press the power button.

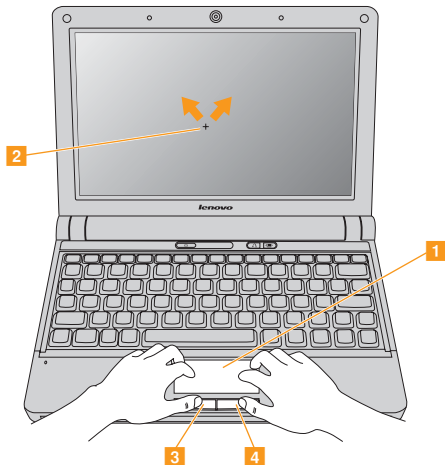
■ **Shutting down your computer**

If you are not going to use your computer for a day or two, shut it down.

To shut down your computer, click **Start** and select **Turn Off** from **Turn Off Computer**.

■ ■ Using the touchpad

The touchpad consists of a pad **1** and two click buttons at the bottom of the keyboard. To move the cursor **2** on the screen, slide your fingertip over the pad in the direction in which you want the cursor to move. The functions of the left **3** and right **4** click buttons correspond to those of the left and right mouse buttons on a conventional mouse.



❖ **Note:**

You can also attach and use a USB mouse through the USB connector. For details, see “Connecting a universal serial bus (USB) device” on page 36.

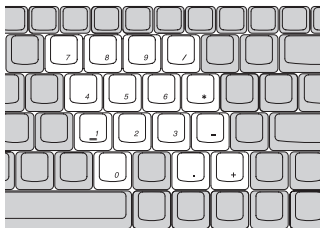
■ **Using the keyboard**

Your computer has a numeric keypad and function keys incorporated in the standard keyboard.

■ **Numeric keypad**

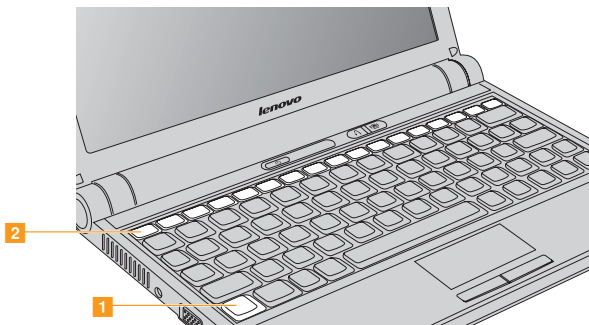
The keyboard has keys that, when enabled, work as a 10-key numeric keypad.

To enable or disable the numeric keypad, press **Fn+F7**.



■ Function key combinations

Through the use of the function keys, you can change operational features instantly. To use this function, press and hold the **Fn** key **1**; then press one of the function keys **2**.



The following describes the features of each function key.

Fn + Esc: Disable/enable the integrated camera.

Fn + F1: Put your computer in standby mode.

Fn + F2: Turn off/on the LCD screen.

Fn + F3: Shift to other connected display devices.

Fn + F5: Open the interface for integrated wireless devices settings (enable/disable).

Fn + F6: Enable/disable the touchpad.

Fn + F7/NmLk: Enable/disable the Numeric keypad.

Fn + F8/ScrLk: Enable/disable Scroll Lock.

Fn + F9/Break: Activate the Break function.

Fn + F10/Pause: Activate the Pause function.

Fn + F11/F12: Activate the F12 function.

Fn + PgUp/Home: Activate the Home function.

Fn + PgDn/End: Activate the End function.

Fn + Ins/SysRq: Activate the System Request.

Fn + Del/PrtSc: Activate the Print Screen function.

Fn + ↑/↓: Increase/decrease display brightness.

Fn + ←/→: Decrease/increase computer volume.

■ **OneKey™ Rescue System button (for Windows XP users only)**

Press the OneKey Rescue System button to enter the main interface of OneKey Rescue System while the power is off.

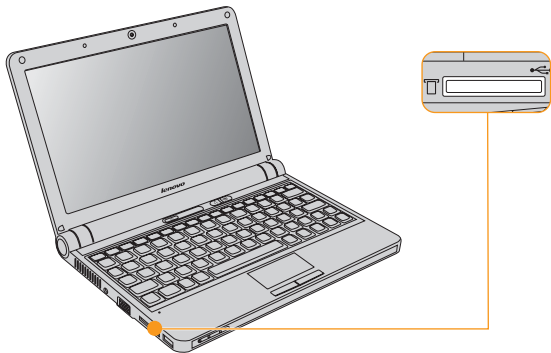
⦿ **Attention:**

When you press OneKey Rescue System button to turn on the computer, please ensure that your computer is not connected with other peripherals (such as a USB storage device, etc.), otherwise the system may not operate properly.

For details, see *OneKey Rescue System User Guide*.

■ ■ Using memory cards (purchased separately) —

Your computer comes with one memory card slot used to insert a memory card, such as an SD Card, a MultiMediaCard, a Memory Stick or a Memory Stick Pro.



❖ **Note:**

Only use the memory card listed above; for more information about the usage, read the instructions shipped with the memory card.

■ **Inserting a memory card**

Gently slide the memory card with the arrow facing upward and pointing toward the memory card slot. Slide until it clicks into place.

■ **Removing a memory card**

Gently pull the memory card out of the slot.

❖ **Note:**

Before removing the memory card, stop it from working by Windows **Safely Remove Hardware** utility, otherwise it may corrupt your data.

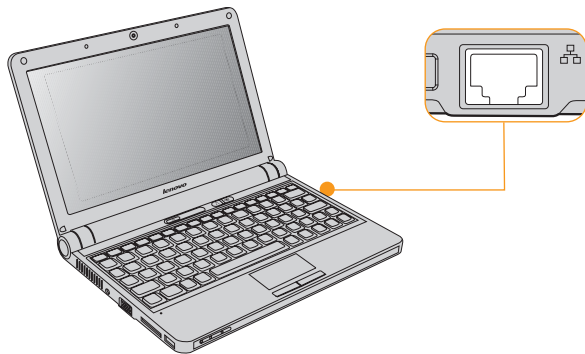
■ ■ **Using the integrated camera** ---

With the built-in camera, you can take photos or movies and use with various applications, such as Windows Live Messenger or Yahoo! Messenger, and so on.

■ ■ Using the Internet

■ Using LAN port

The LAN port supports a standard RJ-45 connector, and allows you to connect the computer to a high-speed DSL/cable modem connection and local area network (LAN).



Chapter 2. Using your computer

⦿ **Attention:**

As the voltage of a telephone connection is higher than that of a network, do not attempt to connect a telephone cable to the LAN port or else a short circuit of the computer might occur.

■ **Using wireless LAN**

To enable wireless communications, do the following.

Press the integrated wireless device button (📶), and confirm the system status indicator (📶) is turned on.

■ Using Mobile Broadband (specific models only)

❖ Note:

Before using the Mobile Broadband, be sure to see “Safety information related to Mobile Broadband” in Chapter 6 first.

What is Mobile Broadband

A Mobile Broadband network, also known as a Wireless Wide Area Network (WWAN), provides Internet access to laptop computers, cell phones and other devices over a large geographic area. Mobile networks are used for data transmission, and access is usually provided by a mobile network operator.

The biggest advantage of Mobile Broadband is that it is accessible from anywhere you can get a signal from your carrier. Laptop computers with Mobile Broadband access can stay online on the move, and will not be tied down by a wired Internet connection.

Various standards are in use by mobile operators to provide Mobile Broadband service. Depending on the model, your Mobile Broadband module may support one or more of the following standards:

- GSM (Global System for Mobile Communications)
- TD-SCDMA (Time Division-Synchronous Code Division Multiple Access)
- SCDMA (Synchronous Code Division Multiple Access)
- EV-DO (Evolution Data Optimized)
- HSPA (High Speed Packet Access)

❖ **Note:**

A mobile network operator, also known as mobile carrier, is a company that provides mobile telecommunication service to its subscribers.

Mobile Broadband is a subscription service. Refer to your local mobile network operator for availability, cost and other information.

Getting started with Mobile Broadband

Before getting started with Mobile Broadband, you first need to choose a mobile network operator and make sure you are in the coverage area of the network. After that, you also need:

- To activate Mobile Broadband service through your local mobile network operator. You will get a Subscriber Identity Module (SIM) card after activation. For instructions on inserting the SIM card, refer to the “Inserting the SIM card” on page 21.

❖ **Note:**

A SIM card is a type of smart card used by mobile network operators to identify their service subscribers on the mobile network. You will get the SIM card from your mobile network operator after you have activated the Mobile Broadband service.

- A connection management utility to connect/disconnect to your Mobile Broadband network.

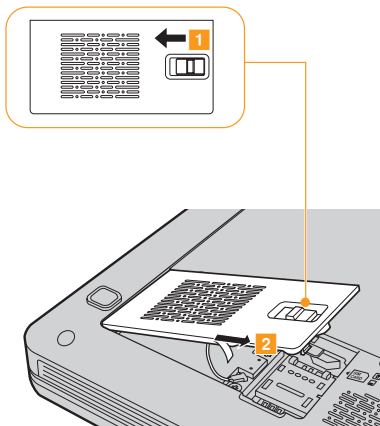
❖ **Note:**

In general, your mobile service provider will provide this utility.

Inserting the SIM card

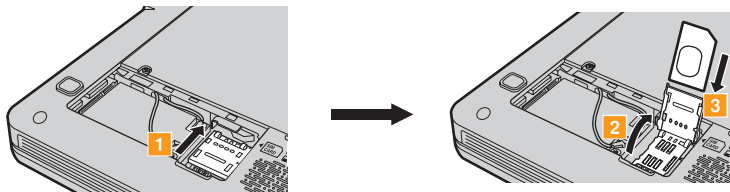
To insert the SIM card:

- 1 Turn off the computer; then disconnect the AC adapter and all cables from the computer.
- 2 Close the computer display and turn it over.
- 3 Remove the battery.
- 4 Unlock the expansion slot cover latch **1**, and then remove the expansion slot cover **2**.



Chapter 2. Using your computer

- 5 Unlock the card holder **1**, lift it up **2** and then insert the SIM card firmly into the card holder as shown in the illustration **3**.



- 6 Pivot the card holder downward, and then lock the holder.
- 7 Attach the expansion slot cover and lock the latch.
- 8 Put the battery back in place, turn the computer over again, and reconnect the cables.

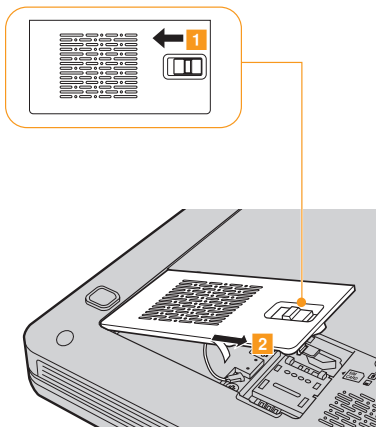
➡ **Important:**

Never insert or remove the SIM card while the computer is on. Doing so may cause permanent damage to the SIM card as well as the SIM card reader. Be sure to lock the card holder when the SIM card is inserted.

Removing the SIM card

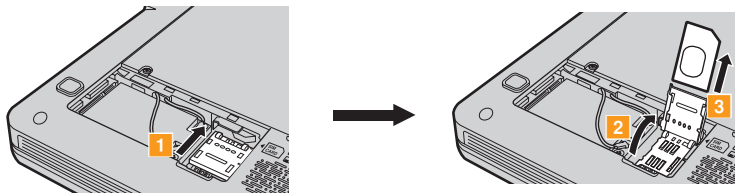
To remove the SIM card:

- 1 Turn off the computer; then disconnect the AC adapter and all cables from the computer.
- 2 Close the computer display and turn it over.
- 3 Remove the battery.
- 4 Unlock the expansion slot cover latch **1**, and then remove the expansion slot cover **2**.



Chapter 2. Using your computer

- 5 Unlock the card holder **1**, lift it up **2** and then remove the SIM card from the card holder as shown in the illustration **3**.



- 6 Pivot the card holder downward, and then lock the holder.
- 7 Attach the expansion slot cover and lock the latch.
- 8 Put the battery back in place, turn the computer over again, and reconnect the cables.

➡ **Important:**

Be sure to lock the card holder when the SIM card is removed.

■ ■ Securing your computer

This section provides information about how to help protect your computer from theft and unauthorized use.

■ **Attaching a security lock (optional)**

You can attach a security lock to your computer to help prevent it from being removed without your permission.

Attach a security lock to the keyhole of the computer; then secure the chain on the lock to a stationary object. Refer to the instructions shipped with the security lock.

Refer to the “Right-side view” on page 4 for the location of the security keyhole.

❖ **Note:**

You are responsible for evaluating, selecting, and implementing the locking devices and security features. Lenovo makes no comments, judgements, or warranties about the function, quality, or performance of locking devices and security features.

■ Using passwords

Using passwords helps prevent your computer from being used by others. Once you set a password and enable it, a prompt appears on the screen each time you power on the computer. Enter your password at the prompt. The computer cannot be used unless you enter the correct password.

Make sure that only authorized individuals access your computer. Establishing different kinds of passwords requires that other possible users know the proper passwords in order to access your computer or your data.

Two passwords might be needed for your computer: the Supervisor password, and the User password. When the Supervisor password is set, only the Supervisor password entitles you full control of the computer.

- Supervisor password

With a Supervisor password, you can get full control of the computer. When you enter the BIOS Setup Utility with a Supervisor password, you are entitled to set all of the options.

- User password

If a User password is set, you can also use the User password to enter the BIOS Setup Utility, but only a part of the options can be set. User password can not be set if Supervisor password is not set.

❖ **Note:**

If you set passwords through the BIOS Setup Utility and put your computer into standby mode by pressing **Fn + F1**, the following describes the behavior of the computer when you bring it out of standby mode:

- You are prompted to enter the Windows log-on password rather than the User password to resume operation.

To set a supervisor password:

Only a system administrator is able to perform this procedure.

- 1 Turn on your computer. Press **F2**, while the initial screen is displayed. The BIOS Setup Utility screen opens.
- 2 Select **Security**, using the cursor directional keys.
- 3 Select **Set Supervisor Password**, and press the **Enter** key. The Set Supervisor Password window opens.
- 4 Choose your Supervisor password, which can be from one to eight alphanumeric characters in any combination. Type it in the **Enter New Password** field.
- 5 Press the **Enter** key once to move to the **Confirm New Password** field. Retype the password you just entered to verify it.
- 6 Commit your password to memory, and press the **Enter** key.
- 7 Press **F10** to exit.
- 8 Select **Yes** in the Setup Confirmation window.

Changing or removing the supervisor password

To change the password, do the following:

- 1 Select **Set Supervisor Password**, and press the **Enter** key. The Set Supervisor Password window opens.
- 2 Select **Enter Current Password** and type in the correct password. Then press **Enter** key once to move to **Enter New Password** field, type a new supervisor password in.
- 3 Press the **Enter** key once to move to the **Confirm New Password** field. Retype the password you just entered to verify it.
- 4 Commit your password to memory, and press the **Enter** key.

To remove password, do the following:

- 1 Select **Set Supervisor Password**, and press the **Enter** key.
- 2 Select **Enter Current Password** and type in the correct password, and press the **Enter** key thrice.

❖ **Note:**

Make sure the **Password on boot** is set to **Enabled** if you need the password protection at power on.

To set a user password:

- 1 Turn on your computer. Press **F2**, while the initial screen is displayed. The BIOS Setup Utility screen opens.
- 2 Select **Security**, using the cursor directional keys.
- 3 Select **Set User Password**, and press the **Enter** key. The Set User Password window opens.
- 4 Choose your user password, which can be from one to eight alphanumeric characters in any combination. Type it in the **Enter New Password** field.
- 5 Press the **Enter** key once to move to the **Confirm New Password** field. Retype the password you just entered to verify it.
- 6 Commit your password to memory, and press the **Enter** key.
- 7 Press **F10** to exit.
- 8 Select **Yes** in the Setup Confirmation window.

❖ **Note:**

You can set the User Password only when the Supervisor Password has been set.

Changing or removing the user password

To change the password, do the following:

- 1 Select **Set User Password**, and press the **Enter** key. The Set User Password window opens.
- 2 Type correct password in the **Enter Current Password** field. Then press **Enter** key once to move to the **Enter New Password** field, type a new user password in.
- 3 Press the **Enter** key once to move to the **Confirm New Password** field. Retype the password you just entered to verify it.
- 4 Commit your password to memory, and press the **Enter** key.

To remove the password, do the following:

- 1 Select **Set User Password**, and press the **Enter** key.
- 2 Type correct user password in **Enter Current Password**, and press **Enter** key thrice.

■ ■ Installing device drivers

A compatible device driver is a requirement to ensure correct operation and performance of each component in your computer. Lenovo provides all drivers that you need in your hard disk.

❖ **Notes:**

Most installations require a reboot to update the driver, otherwise the system's stability and audio or video effect may be compromised, or you even have to reinstall the operating system.

■ ■ Using battery and AC adapter

When you need to use your computer away from electrical outlets, you depend on battery power to keep your computer running. Different computer components consume power at different rates. The more you use the power-intensive components, the faster you consume battery power.

■ Your computer batteries

Your computer batteries enable you to do more, save more, and spend more time unplugged. Mobility has revolutionized business by enabling you to take your work wherever you go. With your computer batteries, you will be able to work longer without being tied to an electrical outlet.

❖ **Note:**

The operating system may run slower when using the battery mode.

⦿ **Attention:**

Any use of the battery other than the original or Lenovo battery will result in "burning" or "fire".

Dispose of the used battery depending on the instructions.

■ **Checking battery status**

You can determine the percentage of battery power remaining by using Windows Power Options.

As each computer user has different habits and needs, it is difficult to predict how long a battery charge will last.

■ **Using the AC adapter**

The power to run your computer can come either from the lithium-ion (Li-ion) battery pack provided with it, or from AC power through the AC adapter. While you use AC power, the battery charges automatically.

The AC adapter that comes with your computer has two basic components:

- 1 The transformer pack that converts AC power for use with the computer.
- 2 The power cord that plugs into the AC outlet and into the transformer pack.

⦿ **Attention:**

Using an improper power cord could cause severe damage to your computer.

To use the AC adapter, do the following. Be sure to take these steps in the order in which they are given here.

- 1 Connect the power cord to the transformer pack.
- 2 Plug the power cord into an electrical outlet.
- 3 Connect the AC adapter to the AC power adapter jack of the computer.

You can check the status of your battery at any time by looking at the battery meter at the bottom of your display.

❖ **Notes:**

- When you do not use the AC adapter, disconnect it from the electrical outlet.
- Do not wrap the power cord tightly around the AC power transformer pack when it is connected to the transformer.
- You can charge the battery when the AC adapter is connected to the computer and the battery is installed. You need to charge it in any of the following conditions:
 - When you purchase a new battery
 - If the battery status indicator (amber) starts blinking
 - If the battery has not been used for a long time

Before you charge the battery, make sure that its temperature is at least 10 degrees Celsius (50 degrees Fahrenheit).

■ Charging the battery

When you check the battery status and find that the battery is low, you need to charge the battery or replace it with a charged battery.

If an AC outlet is convenient, first, connect the power cord to the transformer pack; second, plug the power cord into an electrical outlet; and then connect the AC adapter to the power jack of the computer.

The charging time is affected by the physical environment.

❖ Note:

To increase the life of the battery, the computer does not start recharging the battery if the remaining power is no less than 95 percent.

■ Handling the battery

* Danger:

Do not attempt to disassemble or modify the battery pack.

Attempting to do so can cause an explosion, or liquid leakage from the battery pack.

A battery pack other than the one specified by Lenovo, or a disassembled or modified battery pack is not covered by the warranty.

* Danger:

If the rechargeable battery pack is incorrectly replaced, there is danger of an explosion. The battery pack contains a small amount of harmful substances. To avoid possible injury:

- Replace only with a battery of the type recommended by Lenovo.

- Keep the battery pack away from fire.
- Do not expose the battery pack to water or rain.
- Do not attempt to disassemble the battery pack.
- Do not short-circuit the battery pack.
- Keep the battery pack away from children.

*** Danger:**

Do not put the battery pack in trash that is disposed of in landfills. When disposing of the battery, comply with local ordinances or regulations and your company's safety standards.

Chapter 3. Using external devices

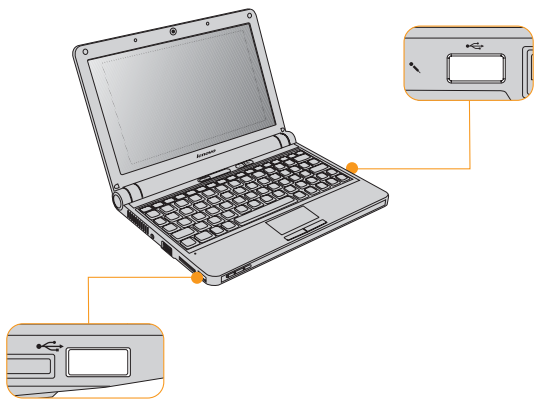
Your computer has many built-in features and connection capabilities.

⦿ **Attention:**

Do not connect or disconnect any external device cables other than USB cables while the computer power is on; otherwise, you might damage your computer. To avoid possible damage to attached devices, wait at least five seconds after the computer is shut down to disconnect external devices.

■ ■ **Connecting a universal serial bus (USB) device** —

Your computer comes with two Universal Serial Bus compatible with USB 2.0 or USB 1.1 devices such as a keyboard, mouse, camera, hard disk drive, printer, and scanner. USB allows devices to be connected and disconnected without rebooting the computer (hot swapping), and allows specific classes of hardware to be used without requiring individual device drivers to be installed.

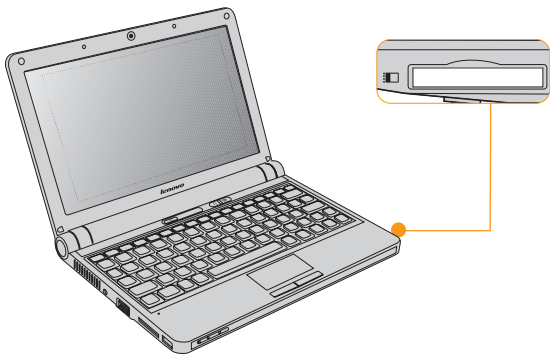


⦿ **Attention:**

When using high power consumption USB device such as USB ODD, use external device power adapter. Otherwise, it will cause the device unable to be recognized and used, or system shut down.

■ Connecting an ExpressCard/34 device (specific models only)

Your computer comes with an ExpressCard/34** slot used for connecting ExpressCard devices that are compatible with the ExpressCard/34" interface.



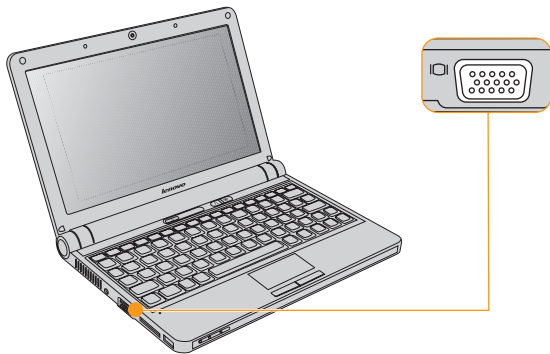
* Only use the ExpressCard/34 module.

■ ■ Connecting an external display

You can connect an external display to your computer, such as a VGA monitor.

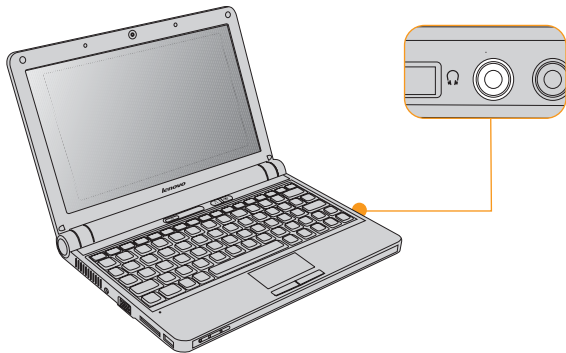
■ Connecting a VGA monitor

You can connect a VGA monitor by using a VGA port. To connect a VGA monitor, plug the display cable to VGA port on your computer. To shift to other connected display devices, press **Fn + F3**.



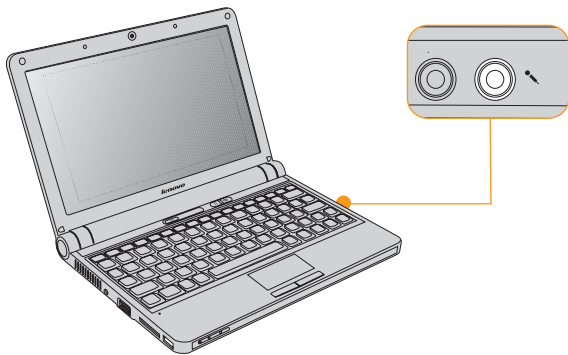
■ ■ Connecting a headphone and audio device

Your computer comes with one headphone jack used for connecting headphones, speakers, and audio devices.



■ ■ Connecting an external microphone

Your computer comes with one external microphone jack used for connecting an external microphone.



■ ■ Connecting to *Bluetooth* enabled devices

Your computer can connect to and transfer data wirelessly to other *Bluetooth* enabled devices, such as laptop computers, PDAs, and cell phones.

■ Enabling *Bluetooth* communications

Press the integrated wireless device button (📶), and confirm the system status indicator (📶) is turned on.

❖ **Note:**

When you do not need to use the *Bluetooth* function, turn it off to save battery power.

For details on connecting other *Bluetooth* enabled devices (market available), please refer to the instructions shipped with the devices that you have purchased separately.

Chapter 4. Troubleshooting

■ ■ Frequently asked questions

This section lists frequently asked questions and tells where you can find detailed answers. For details about each publication included in the package with your computer, see *Lenovo IdeaPad S9/S10 Setup Poster*.

What safety precautions should I follow when using my computer?

See “Chapter 6. Safety, use, and care information” for detailed information about safety.

How can I prevent problems with my computer?

See “Chapter 6. Safety, use, and care information” on page 59 of this guide. More tips can be found in Chapter 1 and 2.

What are the main hardware features of my new computer?

More information can be found in Chapter 1 and 2.

Where can I find the detailed specifications for my computer?

See <http://consumersupport.lenovo.com>.

I need to upgrade a device *or* I need to replace one of the following: the hard disk drive, memory, or the keyboard.

See “Appendix B. Customer replaceable units (CRUs)” on page 121 of this guide.

My computer is not operating properly.

Study the relevant information in Chapter 2.

Chapter 4. Troubleshooting

Where are the recovery discs?

Your computer do not come with a recovery disc. For an explanation of the alternative recovery methods offered by Lenovo, see *OneKey Rescue System User Guide*.

How can I contact the Customer Support Center?

See “Chapter 5. Getting help and service” on page 54 of this Guide. For the phone numbers of the Customer Support Center nearest to you, See “Lenovo warranty service telephone numbers” on page 119.

Where can I find warranty information?

For the warranty applicable to your computer, including the warranty period and type of warranty service, see “Appendix A. Lenovo Limited Warranty” on page 107.

■ Troubleshooting

If you do not find your problem here, see Chapter 2. The following section only describes problems that might prevent you from accessing the comprehensive information in Chapter 2.

■ Display Problems

When I turn on the computer, nothing appears on the screen.

❖ **Note:**

If you are using an external monitor, See “Computer screen problems” on page 49.

- The brightness level might be set to minimum. Adjust the brightness level by pressing **Fn + ↑**.
- If the screen still remains blank, make sure that:
 - The battery is installed correctly.
 - The AC adapter is connected to the computer and the power cord is plugged into a working electrical outlet.
 - The computer power is on. (Press the power button again for confirmation.)
- If these items are properly set, and the screen remains blank, have the computer serviced.

When I turn on the computer, only a white cursor appears on a blank screen.

Restore backed-up files to your Windows environment or the entire contents of your hard disk to the original factory contents using OneKey Recovery. If you still see only the cursor on the screen, have the computer serviced.

❖ Note:

The instruction above is for Windows XP users only.

My screen goes blank while the computer is on.

Your screen saver or power management may be enabled. Do one of the following to exit from the screen saver or to resume from standby or hibernation mode:

- Touch the touchpad.
- Press any key.
- Press the power button.

■ A password problem

I forgot my password.

- If you forgot your user password, you must take your computer to a Lenovo authorized servicer or a marketing representative to have the password canceled.
- If you forget your supervisor password, Lenovo authorized servicer cannot reset your password. You must take your computer to a Lenovo authorized servicer or a marketing representative to have the main board replaced. Proof of purchase is required, and a fee will be charged for parts and service.

■ Keyboard problems

A number appears when you enter a letter.

The numeric lock function is on. To disable it, press **Fn + F7/NmLk**.

■ Standby or hibernation problems

The computer enters standby mode unexpectedly.

If the processor overheats, the computer automatically enters standby mode to allow the computer to cool and to protect the processor and other internal components. Check the settings for standby mode.

The computer enters standby mode immediately after Power-on self-test (POST). (Power indicator turns on)

Make sure that:

- The battery is charged.
- The operating temperature is within the acceptable range. See “Specifications” on page 122.

If the battery is charged and the temperature is within range, have the computer serviced.

The critical low-battery error message appears, and the computer immediately turns off.

The battery power is getting low. Connect the AC adapter to the computer, or replace the battery with a fully charged one.

The computer does not return from standby mode and the computer does not work.

If the computer does not return from standby mode, it may have entered hibernation mode automatically because the battery is depleted.

- If your computer is in standby mode. Connect the AC adapter to the computer; then press any key or the power button.
- If your computer is in standby/hibernation mode or power-off state. Connect the AC adapter to the computer; then press the power button to resume operation.

If the system still does not return from standby mode, your system has stopped responding, and you cannot turn off the computer; reset the computer. Unsaved data may be lost. To reset the computer, press and hold the Power button for 4 seconds or more. If the computer is still not reset, remove the AC adapter and the battery.

■ Computer screen problems

The screen is blank.

Do the following:

- If you are using the AC adapter, or using the battery, and the battery status indicator is on, press **Fn + ↑** to make the screen brighter.
- If the Power indicator is in blinking, press any key or the Power button to resume from the standby mode.
- If you still have the problem, do the solution in the following problem “The screen is unreadable or distorted.”

The screen is unreadable or distorted.

Make sure that:

- The display device driver is installed correctly.
- The screen resolution and color quality are correctly set.
- The monitor type is correct.

Incorrect characters appear on the screen.

Did you install the operating system or application program correctly? If they are installed and configured correctly, have the computer serviced.

Missing, discolored, or bright dots appear on the screen every time you turn on your computer.

This is an intrinsic characteristic of the TFT technology. Your computer's display contains multiple thin-film transistors (TFTs). A small number of missing, discolored, or bright dots on the screen might exist all the time.

■ Sound problems

No sound can be heard from the speaker even when the volume is turned up.

Make sure that:

- The Mute function is off.
- The headphone jack is not used.

■ Battery problems

The battery cannot be fully charged by the power-off method in the standard charge time for your computer.

For details, See “Checking battery status” in Chapter 2.

Your computer shuts down before the battery status indicator shows empty.

-or-

Your computer operates after the battery status indicator shows empty.

Discharge and recharge the battery.

The operating time for a fully charged battery is short.

For details, See “Handling the battery” in Chapter 2.

The computer does not operate with a fully charged battery.

The surge protector in the battery might be active. Turn off the computer for one minute to reset the protector; then turn on the computer again.

The battery does not charge.

For details, See “Handling the battery” in Chapter 2.

■ **A hard disk drive problem**

The hard disk drive does not work.

In the **Boot** menu in BIOS Setup Utility, make sure that the hard disk drive is included in the **Boot Order** correctly.

■ **A startup problem**

The Microsoft® Windows operating system does not start.

Use the OneKey Recovery to help solve or identify your problem. For details about OneKey Recovery, see *OneKey Rescue System User Guide*.

❖ **Note:**

The instruction above is for Windows XP users only.

■ Other problems

Your computer does not respond.

- To turn off your computer, press and hold the power button for 4 seconds or more. If the computer still does not respond, remove the AC adapter and the battery.
- Your computer might lock when it enters standby mode during a communication operation. Disable the standby timer when you are working on the network.

The computer does not start from a device you want.

See the **Boot** menu of the BIOS Setup Utility. Make sure that the startup sequence in the BIOS Setup Utility is set so that the computer starts from the device you want.

Also make sure that the device from which the computer starts is enabled. In the **Boot** menu in the BIOS Setup Utility, make sure that the device is included in the **Boot Order** list.

Chapter 5. Getting help and service

■ ■ Getting help and service

If you need help, service, technical assistance, or just want more information about Lenovo computers, you will find a wide variety of sources available from Lenovo to assist you. This section contains information about where to go for additional information about Lenovo computers, what to do if you experience a problem with your computer, and whom to call for service should it be necessary.

Microsoft Service Packs are the latest software source for Windows product updates. They are available by means of a Web download (connection charges may apply) or from a disc. For more specific information and links, go to the Microsoft Web site at <http://www.microsoft.com>. Lenovo offers Up and Running technical assistance with installation of, or questions related to, Service Packs for your Lenovo-preinstalled Microsoft Windows product.

■ ■ Getting help on the Web

The Lenovo Web site on the World Wide Web has up-to-date information about Lenovo computers and support. The address for the Lenovo home page is <http://consumersupport.lenovo.com>.

You can find support information for your Lenovo IdeaPad™ computer at <http://consumersupport.lenovo.com>. Research this Web site to learn how to solve problems, find new ways to use your computer, and learn about options that can make working with your Lenovo computer even easier.

■ ■ Calling the customer support center

If you have tried to correct the problem yourself and still need help, during the warranty period, you can get help and information by telephone through the Customer Support Center. The following services are available during the warranty period:

- Problem determination - Trained personnel are available to assist you with determining if you have a hardware problem and deciding what action is necessary to fix the problem.
- Lenovo hardware repair - If the problem is determined to be caused by Lenovo hardware under warranty, trained service personnel are available to provide the applicable level of service.

Chapter 5. Getting help and service

- Engineering change management - Occasionally, there might be changes that are required after a product has been sold. Lenovo or your reseller, if authorized by Lenovo, will make selected Engineering Changes (ECs) available that apply to your hardware.

The following items are not covered:

- Replacement or use of parts not manufactured for or by Lenovo or non warranted parts
- Identification of software problem sources
- Configuration of BIOS as part of an installation or upgrade
- Changes, modifications, or upgrades to device drivers
- Installation and maintenance of network operating systems (NOS)
- Installation and maintenance of application programs

To determine if your Lenovo hardware product is under warranty and when the warranty expires, go to <http://consumersupport.lenovo.com>, and click **Warranty**, then follow the instructions on the screen.

Refer to your Lenovo hardware warranty for a full explanation of Lenovo warranty terms. Be sure to retain your proof of purchase to obtain warranty service.

If possible, be near your computer when you make your call in case the technical assistance representative needs to help you resolve a computer problem. Please ensure that you have downloaded the most current drivers and system updates, and recorded information before you call. When calling for technical assistance, please have the following information available:

- Machine Type and Model
- Serial numbers of your computer, monitor, and other components, or your proof of purchase
- Description of the problem
- Hardware and software configuration information for your system

The telephone numbers for your Customer Support Center location are located in “Appendix A. Lenovo Limited Warranty” on page 107.

❖ **Note:**

Telephone numbers are subject to change without notice. For the latest list of Customer Support Center telephone numbers and hours of operation, visit the Support Web site at <http://consumersupport.lenovo.com>. If the number for your country or region is not listed, contact your Lenovo reseller or Lenovo marketing representative.

■ ■ Getting help around the world

If you travel with your computer or relocate it to a country where your Lenovo machine type is sold, your computer might be eligible for International Warranty Service, which automatically entitles you to obtain warranty service throughout the warranty period. Service will be performed by service providers authorized to perform warranty service.

Service methods and procedures vary by country, and some services might not be available in all countries. Service centers in certain countries might not be able to service all models of a particular machine type. In some countries, fees and restrictions might apply at the time of service.

To determine whether your computer is eligible for International Warranty Service and to view a list of the countries where service is available, go to <http://consumersupport.lenovo.com>, click **Warranty**, and follow the instructions on the screen.

Chapter 6. Safety, use, and care information

■ ■ Important safety information

This information can help you safely use your notebook personal computer. Follow and retain all information included with your computer. The information in this document does not alter the terms of your purchase agreement or the Lenovo Limited Warranty. For more information, See “Appendix A. Lenovo Limited Warranty” on page 107.

Customer safety is important. Our products are developed to be safe and effective. However, personal computers are electronic devices. Power cords, power adapters, and other features can create potential safety risks that can result in physical injury or property damage, especially if misused. To reduce these risks, follow the instructions included with your product, observe all warnings on the product and in the operating instructions, and review the information included in this document carefully. By carefully following the information contained in this document and provided with your product, you can help protect yourself from hazards and create a safer computer work environment.

❖ **Note:**

This information includes references to power adapters and batteries. In addition to notebook computers, some products (such as speakers and monitors) ship with external power adapters. If you have such a product, this information applies to your product. In addition, computer products contain a coin-sized internal battery that provides power to the system clock even when the computer is unplugged, so the battery safety information applies to all computer products.

■ Conditions that require immediate action

Products can become damaged due to misuse or neglect. Some product damage is serious enough that the product should not be used again until it has been inspected and, if necessary, repaired by an authorized servicer.

As with any electronic device, pay close attention to the product when it is turned on. On very rare occasions, you might notice an odor or see a puff of smoke or sparks vent from your product. Or you might hear sounds like popping, cracking, or hissing. These conditions might merely mean that an internal electronic component has failed in a safe and controlled manner. Or, they might indicate a potential safety issue. However, do not take risks or attempt to diagnose the situation yourself. Contact the Customer Support Center for further guidance. For a list of Service and Support phone numbers, see <http://consumersupport.lenovo.com>.

Frequently inspect your computer and its components for damage or wear or signs of danger. If you have any question about the condition of a component, do not use the product. Contact the Customer Support Center or the product manufacturer for instructions on how to inspect the product and have it repaired, if necessary.

In the unlikely event that you notice any of the following conditions, or if you have any safety concerns with your product, stop using the product and unplug it from the power source and telecommunication lines until you can speak to the Customer Support Center for further guidance.

- Power cords, plugs, power adapters, extension cords, surge protectors, or power supplies that are cracked, broken, or damaged.
- Signs of overheating, smoke, sparks, or fire.

- Damage to a battery (such as cracks, dents, or creases), discharge from a battery, or a buildup of foreign substances on the battery.
- A cracking, hissing, or popping sound, or strong odor that comes from the product.
- Signs that liquid has been spilled or an object has fallen onto the computer product, the power cord, or power adapter.
- The computer product, power cord, or power adapter has been exposed to water.
- The product has been dropped or damaged in any way.
- The product does not operate normally when you follow the operating instructions.

❖ **Note:**

If you notice these conditions with a product (such as an extension cord) that is not manufactured for or by Lenovo, stop using that product until you can contact the product manufacturer for further instructions, or until you get a suitable replacement.

■ **Safety guidelines**

Always observe the following precautions to reduce the risk of injury and property damage.

■ Service and upgrades

⦿ Attention:

Do not attempt to service a product yourself unless instructed to do so by the Customer Support Center or your documentation. Only use a service provider who is approved to repair your particular product.

❖ Note:

Some computer parts can be upgraded or replaced by the customer. Upgrades typically are referred to as options. Replacement parts approved for customer installation are referred to as Customer Replaceable Units, or CRUs. Lenovo provides documentation with instructions when it is appropriate for customers to install options or replace CRUs. You must closely follow all instructions when installing or replacing parts. The Off state of a power indicator does not necessarily mean that voltage levels inside a product are zero. Before you remove the covers from a product equipped with an ac power cord, always make sure that the power is turned off and that the product is unplugged from any power source. For more information on CRUs, See “Appendix B. Customer replaceable units (CRUs)” on page 121. If you have any questions or concerns, contact the Customer Support Center.

Although there are no moving parts in your computer after the power cord has been disconnected, the following warnings are required for your safety.

*** Danger:**

Hazardous moving parts. Keep fingers and other body parts away.

⦿ Attention:

Before replacing any CRUs, turn off the computer and wait three to five minutes to let the computer cool before opening the cover.

■ **Power cords and power adapters**

*** Danger:**

Use only the power cords and power adapters supplied by the product manufacturer. The power cord and power adapter are intended for use with this product only. They should never be used with any other product.

The power cords shall be safety approved. For Germany, it shall be H03VV-F, 3G, 0.75 mm², or better. For other countries, the suitable types shall be used accordingly.

Never wrap a power cord around a power adapter or other object. Doing so can stress the cord in ways that can cause the cord to fray, crack, or crimp. This can present a safety hazard.

Always route power cords or any other cables so that they will not be walked on, tripped over, or pinched by objects.

Chapter 6. Safety, use, and care information

Protect power cords and power adapters from liquids. For instance, do not leave your power cord or power adapter near sinks, tubs, toilets, or on floors that are cleaned with liquid cleansers. Liquids can cause a short circuit, particularly if the power cord or power adapter has been stressed by misuse. Liquids also can cause gradual corrosion of power cord terminals and/or the connector terminals on a power adapter, which can eventually result in overheating.

Always connect power cords and signal cables in the correct order and ensure that all power cord connectors are securely and completely plugged into receptacles.

Do not use any power adapter that shows corrosion at the ac input pins or shows signs of overheating (such as deformed plastic) at the ac input or anywhere on the power adapter.

Do not use any power cords where the electrical contacts on either end show signs of corrosion or overheating or where the power cord appears to have been damaged in any way.

■ Extension cords and related devices

* **Danger:**

Ensure that extension cords, surge protectors, uninterruptible power supplies, and power strips that you use are rated to handle the electrical requirements of the product. Never overload these devices. If power strips are used, the load should not exceed the power strip input rating. Consult an electrician for more information if you have questions about power loads, power requirements, and input ratings.

■ Plugs and outlets

* **Danger:**

If a receptacle (power outlet) that you intend to use with your computer equipment appears to be damaged or corroded, do not use the outlet until it is replaced by a qualified electrician.

Do not bend or modify the plug. If the plug is damaged, contact the manufacturer to obtain a replacement.

Do not share an electrical outlet with other home or commercial appliances that draw large amounts of electricity; otherwise, unstable voltage might damage your computer, data, or attached devices.

Some products are equipped with a three-pronged plug. This plug fits only into a grounded electrical outlet. This is a safety feature. Do not defeat this safety feature by trying to insert it into a non-grounded

Chapter 6. Safety, use, and care information

outlet. If you cannot insert the plug into the outlet, contact an electrician for an approved outlet adapter or to replace the outlet with one that enables this safety feature. Never overload an electrical outlet. The overall system load should not exceed 80 percent of the branch circuit rating. Consult an electrician for more information if you have questions about power loads and branch circuit ratings.

Be sure that the power outlet you are using is properly wired, easily accessible, and located close to the equipment. Do not fully extend power cords in a way that will stress the cords.

Be sure that the power outlet provides the correct voltage and current for the product you are installing.

Carefully connect and disconnect the equipment from the electrical outlet.

■ Power supply statement

* **Danger:**

Never remove the cover on a power supply or any part that has the following label attached.



Hazardous voltage, current, and energy levels are present inside any component that has this label attached. There are no serviceable parts inside these components. If you suspect a problem with one of these parts, contact a service technician.

■ **Lithium coin cell battery notice**

✱ Danger:

Danger of explosion if battery is incorrectly replaced.

When replacing the lithium coin cell battery, use only the same or an equivalent type that is recommended by the manufacturer. The battery contains lithium and can explode if not properly used, handled, or disposed of.

Do not:

- Throw or immerse into water
- Heat to more than 100°C (212°F)
- Repair or disassemble

Dispose of the battery as required by local ordinances or regulations.

The following statement applies to users in the state of California, U.S.A.

California Perchlorate Information:

Chapter 6. Safety, use, and care information

Products containing CR (manganese dioxide) lithium coin cell batteries may contain perchlorate.

Perchlorate Material — special handling may apply.
See <http://www.dtsc.ca.gov/hazardouswaste/perchlorate>.

■ Heat and product ventilation

✱ Danger:

Computers, AC adapters, and many accessories can generate heat when turned on and when batteries are charging. Notebook computers can generate a significant amount of heat due to their compact size. Always follow these basic precautions:

- When your computer is turned on or the battery is charging, the base, the palm rest, and some other parts may become hot. Avoid keeping your hands, your lap, or any other part of your body in contact with a hot section of the computer for any extended length of time. When you use the keyboard, avoid keeping your palms on the palm rest for a prolonged period of time. Your computer generates some heat during normal operation. The amount of heat depends on the amount of system activity and the battery charge level. Extended contact with your body, even through clothing, could cause discomfort or even a skin burn. Periodically take breaks from using the keyboard by lifting your hands from the palm rest; and be careful not to use the keyboard for any extended length of time.
- Do not operate your computer or charge the battery near flammable materials or in explosive environments.

- Ventilation slots, fans and/or heat sinks are provided with the product for safety, comfort, and reliable operation. These features might inadvertently become blocked by placing the product on a bed, sofa, carpet, or other flexible surface. Never block, cover, or disable these features.
- When the AC adapter is connected to an electrical outlet and your computer, it generates heat. Do not place the adapter in contact with any part of your body while using it. Never use the AC adapter to warm your body. Extended contact with your body, even through clothing, may cause a skin burn.

For your safety, always follow these basic precautions with your computer:

- Keep the cover closed whenever the computer is plugged in.
- Regularly inspect the outside of the computer for dust accumulation.
- Remove dust from vents and any perforations in the bezel. More frequent cleanings might be required for computers in dusty or high-traffic areas.
- Do not restrict or block any ventilation openings.
- Do not operate your computer inside furniture, as this might increase the risk of overheating.
- Airflow temperatures into the computer should not exceed 35° C (95° F).

■ Safety information related to Mobile Broadband

- 1 Do not use the Mobile Broadband feature on your computer in highly flammable areas (e.g. gas station) or near blasting. Though it is rare, the Mobile Broadband module, like other cellular network devices, could generate a spark.
- 2 Avoid using Mobile Broadband feature outdoors during a thunderstorm.
- 3 Use of mobile devices on board aircraft is explicitly prohibited by many airlines companies, especially during take-off and landing. The built-in Mobile Broadband module on your computer is a low-power radio transceiver. When it is turned on, it intermittently receives and transmits radio frequency (RF) energy which could cause interference with the operation of the airplane communication or navigation system. Refer to rules or regulations of your airline company for Mobile Broadband use. Never enable Mobile Broadband feature on your computer unless you are explicitly permitted to do so.
- 4 Follow restrictions when using your computer in hospitals. Some equipments in hospitals are sophisticated and are susceptible to electromagnetic interference. Do not enable Mobile Broadband feature near medical equipment without requesting permission.

- 5 The Mobile Broadband communication may affect the operation of implanted cardiac pacemakers and other medically implanted equipment. Patients with cardiac pacemakers should be well aware that use of Mobile Broadband feature on this computer may cause the implanted device to malfunction. If patients have any doubt that there is interference taking place, immediately disable the wireless radio on the computer and contact the doctor for more information.
- 6 The Mobile Broadband module embedded in your computer does not support voice calls, hence their use for essential communications is not possible. Therefore you should never rely upon the device for essential communications.

■ CD and DVD drive safety

✱ **Danger:**

CD and DVD drives spin discs at a high speed. If a CD or DVD is cracked or otherwise physically damaged, it is possible for the disc to break apart or even shatter when the CD drive is in use. To protect against possible injury due to this situation, and to reduce the risk of damage to your computer, do the following:

- Always store CD/DVD discs in their original packaging.
- Always store CD/DVD discs out of direct sunlight and away from direct heat sources.
- Remove CD/DVD discs from the computer when not in use.
- Do not bend or flex CD/DVD discs, or force them into the computer or their packaging.
- Check CD/DVD discs for cracks before each use. Do not use cracked or damaged discs.

■ Electrical current safety information

* **Danger:**

Electric current from power, telephone, and communication cables is hazardous.

To avoid a shock hazard:

- Do not use your computer during a lightning storm.
- Do not connect or disconnect any cables or perform installation, maintenance, or reconfiguration of this product during an electrical storm.
- Connect all power cords to a properly wired and grounded electrical outlet.
- Connect to properly wired outlets any equipment that will be attached to this product.
- Whenever possible, use one hand only to connect or disconnect signal cables.
- Never turn on any equipment when there is evidence of fire, water, or structural damage.
- Disconnect the attached power cords, battery pack, and all the cables before you open the device covers, unless instructed otherwise in the installation and configuration procedures.
- Do not use your computer until you have closed the cover. Never use the computer when the cover is open.

Chapter 6. Safety, use, and care information

- Connect and disconnect cables as described in the following procedures when installing, moving, or opening covers on this product or attached devices.

To connect:

1. Turn everything OFF.
2. First, attach all cables to devices.
3. Attach signal cables to connectors.
4. Attach power cords to outlets.
5. Turn devices ON.

To disconnect:

1. Turn everything OFF.
2. First, remove power cords from outlets.
3. Remove signal cables from connectors.
4. Remove all cables from devices.

The power cord must be disconnected from the wall outlet or receptacle before installing all other electrical cables connected to your computer.

The power cord may be reconnected to the wall outlet or receptacle only after all other electrical cables have been connected to the computer.

■ Laser compliance statement

Some personal computer models are equipped from the factory with a CD or DVD drive. CD and DVD drives are also sold separately as options. CD and DVD drives are laser products. The drive's classification label (shown below) is on the surface of the drive.

CLASS 1 LASER PRODUCT
LASER KLASSE 1
LUOKAN 1 LASERLAITE
APPAREIL A LASER DE CLASSE 1
KLASS 1 LASER APPARAT



Example of the label

Chapter 6. Safety, use, and care information

These drives are certified in the U.S. to conform to the requirements of the Department of Health and Human Services 21 Code of Federal Regulations (DHHS 21 CFR) Subchapter J for Class 1 laser products. Elsewhere, these drives are certified to conform to the requirements of the International Electrotechnical Commission (IEC) 60825-1 and CENELEC EN 60825-1 for Class 1 laser products.

Class 1 laser products are not considered hazardous. The design of the laser system and the optical storage drive ensures that there is no exposure to laser radiation above a Class 1 level during normal operation, user maintenance, or servicing.

When a CD or DVD drive is installed, note the following handling instructions.

*** Danger:**

Use of controls, adjustments, or performance of procedures other than those specified herein might result in hazardous radiation exposure.

Do not remove the drive covers. Removing the covers of the CD or DVD drive could result in exposure to hazardous laser radiation. There are no serviceable parts inside the CD or DVD drive.

Some CD and DVD drives contain an embedded Class 3A or Class 3B laser diode. Note the following statement.

*** Danger:**

Laser radiation when open. Do not stare into the beam, do not view directly with optical instruments, and avoid direct exposure to the beam.

■ **Liquid Crystal Display (LCD) Notice**

⦿ **Attention:**

Mercury Information (does not apply to LED backlit models):

The fluorescent lamp in the liquid crystal display contains mercury; dispose according to local, state or federal laws.

The LCD is made of glass, and rough handling or dropping the computer can cause the LCD to break. If the LCD breaks and the internal liquid crystal material contacts the eyes, mouth or clothing, take the following actions immediately :

In case contact to the eyes or mouth, rinse with large amount of running water for more than 15 minutes. If any symptoms are present after washing, get medical care.

In case contact to the skin or clothing, wipe it immediately and wash with soap and large amount of running water for more than 15 minutes. The skin or clothing maybe damaged if liquid crystal material is left adhered.

■ ■ **Caring your computer**

Though your computer is designed to function reliably in normal work environments, you need to use common sense in handling it. By following these important tips, you will get the most use and enjoyment out of your computer.

■ **Be careful about where and how you work**

- Do not leave the base of your computer, or any other part that becomes hot during operation, in contact with your lap or any part of your body for an extended period when the computer is functioning or when the battery is charging. Your computer dissipates some heat during normal operation. This heat is a function of the level of system activity and battery charge level. Extended contact with your body, even through clothing, could cause discomfort or, eventually, a skin burn.
- When the AC adapter is connected to an electrical outlet and your computer, it generates heat. Do not place the adapter in contact with any part of your body while using it. Never use the AC adapter to warm your body. Extended contact with your body, even through clothing, may cause a skin burn.
- Route the cables of an AC adapter, a mouse, a keyboard, a printer, or any other electronic device, or communication lines, so that they cannot be walked on, tripped over, pinched by your computer or other objects, or in any way subjected to treatment that could disturb the operation of your computer. Applying strong force to the cables may damage or break them.

- Place liquids away from your computer to avoid spills, and keep your computer away from water (to avoid the danger of electrical shock).
- Do not eat or smoke over your keyboard. Particles that fall into your keyboard can cause damage.
- Store packing materials safely out of the reach of children to prevent the risk of suffocation from plastic bags.
- Keep your computer away from magnets, activated cellular phones, electrical appliances, or speakers (within 13 cm or 5 in).
- Avoid subjecting your computer to extreme temperatures (below 5°C/41°F or above 35°C/95°F).
- Some appliances, such as certain portable desktop fans or air purifiers, can produce negative ions. If a computer is close to such an appliance, and is exposed for an extended time to air containing negative ions, it may become electrostatically charged. Such a charge may be discharged through your hands when you touch the keyboard or other parts of the computer, or through connectors on I/O devices connected to it. Even though this kind of electrostatic discharge (ESD) is the opposite of a discharge from your body or clothing to the computer, it poses the same risk of a computer malfunction.

Your computer is designed and manufactured to minimize any effects of electrostatic charge. An electrostatic charge above a certain limit, however, can increase the risk of ESD. Therefore, when using the computer close to an appliance that can produce negative ions, give special attention to the following:

- Avoid directly exposing your computer to the air from an appliance that can produce negative ions.
- Keep your computer and peripherals as far as possible from such an appliance.

Chapter 6. Safety, use, and care information

- Wherever possible, ground your computer to facilitate safe electrostatic discharge.

❖ **Note:**

Not all such appliances cause a significant electrostatic charge.

When you handle options or CRUs, or perform any work inside the computer, take the following precautions to avoid static-electricity damage:

- Limit your movement. Movement can cause static electricity to build up around you.
- Always handle components carefully. Handle adapters, memory modules, and other circuit boards by the edges. Never touch exposed circuitry.
- Prevent others from touching components.
- When you install a static-sensitive option or CRU, touch the static-protective package containing the part to a metal expansion-slot cover or other unpainted metal surface on the computer for at least two seconds. This reduces static electricity in the package and your body.
- Whenever possible, remove the static-sensitive part from the static-protective packaging and install the part without setting it down. When this is not possible, place the static-protective packaging on a smooth, level surface and place the part on it.
- Do not place the part on the computer cover or other metal surface.

■ **Be gentle with your computer**

- Avoid placing any objects (including paper) between the display and the keyboard or under the keyboard.
- Do not drop, bump, scratch, twist, hit, vibrate, push, or place heavy objects on your computer, display, or external devices.
- Avoid turning the display by over 130°.

■ **Carry your computer properly**

- Before moving your computer, be sure to remove any media, turn off attached devices, and disconnect cords and cables.
- Be sure your computer is in standby or hibernation mode, or turned off, before moving it. This will prevent damage to the hard disk drive and data loss.
- When picking up your open computer, hold it by the bottom. Do not pick up or hold your computer by the display.
- Use a quality carrying case that provides adequate cushion and protection. Do not pack your computer in a tightly packed suitcase or bag.

■ **For outdoor use**

- Backup your critical data before you take your computer outdoors.
- Ensure that the battery is full.
- Be sure to turn off the power and close the LCD well.
- Do not leave anything between the closed LCD and the keyboard.

Chapter 6. Safety, use, and care information

- When you leave the computer in your car, place it on the back seat to avoid being insulated.
- Carry the AC adapter and power cord with the computer.

■ Handle storage media and drives properly

- If your computer comes with an optical drive, do not touch the surface of a disc or the lens on the tray.
- Wait until you hear the CD or DVD click into the center pivot of an optical drive before closing the tray.
- When installing your hard disk, follow the instructions shipped with your hardware, and apply pressure only where needed on the device.

■ Data safety

- Do not delete unknown files or change the name of files or directories that were not created by you; otherwise, your computer software might fail to work.
- Be aware that accessing network resources can leave your computer vulnerable to computer viruses, hackers, spyware, and other malicious activities that might damage your computer, software, or data.
- It is your responsibility to ensure that you have adequate protection in the form of firewalls, antivirus software, and anti-spyware software and keep this software up to date.

■ Take care in setting passwords

- Remember your passwords. If you forget a supervisor or hard disk password, Lenovo authorized service providers will not reset it, and you might have to replace your main board or hard disk drive.

■ Other important tips

- Your computer has an Ethernet connector. Be sure to connect your communication cable to the correct one, so your connector is not damaged.
- Register your Lenovo products with Lenovo (refer to the Web page: <http://consumersupport.lenovo.com>). This can help authorities return your computer to you if it is lost or stolen. Registering your computer also enables Lenovo to notify you about possible technical information and upgrades.
- Only an authorized Lenovo repair technician should disassemble and repair your computer.
- Do not modify or tape the latches to keep the display open or closed.
- Take care not to turn your computer over while the AC adapter is plugged in. This could break the adapter plug.
- Turn off your computer if you are replacing a device, or else verify that the device is warm- or hot-swappable.
- Before you install any of the following devices, touch a metal table or a grounded metal object. This action reduces any static electricity from your body. The static electricity could damage the device.

Chapter 6. Safety, use, and care information

- Memory Card, such as SD Card, Memory Stick, MultiMediaCard and Memory Stick Pro card.
- Memory module
- ExpressCard
- When transferring data to or from a Flash Media Card, such as an SD card, do not put your computer in standby or hibernation mode before the data transfer is complete. To do so might cause damage to your data.

■ **Cleaning the cover of your computer**

Occasionally clean your computer as follows:

- 1 Prepare a mixture of a gentle kitchen-use detergent (one that does not contain abrasive powder or strong chemicals such as acid or alkaline). Use 5 parts water to 1 part detergent.
- 2 Absorb the diluted detergent into a sponge.
- 3 Squeeze excess liquid from the sponge.
- 4 Wipe the cover with the sponge, using a circular motion and taking care not to let any excess liquid drip.
- 5 Wipe the surface to remove the detergent.
- 6 Rinse the sponge with clean running water.
- 7 Wipe the cover with the clean sponge.
- 8 Wipe the surface again with a dry, soft lint-free cloth.

- 9 Wait for the surface to dry completely and remove any cloth fibers from the computer surface.

❖ **Note:**

Shut down the computer and then disconnect the power cord before cleaning the computer.

■ **Cleaning your computer keyboard**

- 1 Absorb some isopropyl rubbing alcohol on a soft, dust-free cloth.
- 2 Wipe each keytop surface with the cloth. Wipe the keys one by one; if you wipe several keys at a time, the cloth may hook onto an adjacent key and possibly damage it. Make sure that no liquid drips onto or between the keys.
- 3 Allow to dry.
- 4 To remove any crumbs and dust from beneath the keys, you can use a camera blower with a brush or cool air from a hair drier.

❖ **Note:**

Avoid spraying cleaner directly on the display or the keyboard.

■ **Cleaning your computer display**

- 1 Gently wipe the display with a dry, soft lint-free cloth. If you see a scratchlike mark on your display, it might be a stain transferred from the keyboard when the cover was pressed from the outside.
- 2 Wipe or dust the stain gently with a soft, dry cloth.
- 3 If the stain remains, moisten a soft, lint-free cloth with water or a 50-50 mixture of isopropyl alcohol and water that does not contain impurities.
- 4 Wring out as much of the liquid as you can.
- 5 Wipe the display again; do not let any liquid drip into the computer.
- 6 Be sure to dry the display before closing it.

■ **Accessibility and comfort** ---

As your computer enables you to work in so many places, it is important that you remain attentive to good posture, good lighting, and proper seating. By keeping these considerations in mind, you can improve performance and achieve greater comfort. Lenovo is committed to providing the latest information and technology to our customers with disabilities.

■ Ergonomic information

Working in the virtual office may mean adapting to frequent changes in your environment. Following some simple rules will make things easier and bring you the maximum benefits of your computer. Keeping in mind such basics as good lighting and proper seating, for example, can help you improve your performance and achieve greater comfort.

❖ Note:

This example shows someone in a conventional setting. Even if you work in a casual, less conventional setting, many of the tips in this section still apply. Develop good habits, and they will serve you well.



Chapter 6. Safety, use, and care information

General Posture: Below are some general recommendations for assuming a healthy working posture. It is best to periodically make minor modifications in your working posture to deter the onset of discomfort caused by long periods of working in the same position. Frequent, short breaks from your work will also help to prevent any minor discomfort associated with your working posture.

Display: Position the display to maintain a comfortable viewing distance of 510-760 mm (20-30 inches). Avoid glare or reflections on the display from overhead lighting or outside sources of light. Keep the display screen clean and set the brightness to levels that enable you to see the screen clearly. Press **Fn + ↑/↓** to adjust display brightness.

Head Position: Keep your head and neck in a comfortable and neutral (vertical, or upright) position.

Chair: Use a chair that gives you good back support and seat height adjustment. Use chair adjustments to best suit your desired posture.

Arm and Hand Position: If available, utilize chair arm rests or an area on your working surface to provide weight support for your arms. Keep your forearms, wrists, and hands in a relaxed and neutral (horizontal) position. Type with a soft touch without pounding the keys.

Leg Position: Keep your thighs parallel to the floor and your feet flat on the floor or on a footrest.

■ What if you are traveling?

It may not be possible to observe the best ergonomic practices when you are using your computer while on the move or in a casual setting. Regardless of the setting, try to observe as many of the tips as possible. Sitting properly and using adequate lighting, for example, will help you maintain desirable levels of comfort and performance.

■ Questions about vision?

Your computer's visual display screen is designed to meet the highest standards and to provide you with clear, crisp images and large, bright displays that are easy to see, yet easy on the eyes. Of course, any concentrated and sustained visual activity can be tiring. If you have questions on eye fatigue or visual discomfort, consult a vision care specialist for advice.

■ ■ Maintenance

An important part of owning your computer is maintenance. With proper care, you can avoid common problems. The following sections provide information that can help you to keep your computer running smoothly.

■ General tips for maintenance

- 1 Check the capacity of your hard disk drive from time to time. If the hard disk drive gets too full, Windows XP will slow down and might produce errors.

❖ **Note:**

You can check the capacity of each hard disk drive as follows.

1. Click **Start** and select **My Computer** from the start menu.
 2. Right-click the hard-disk you want to check.
 3. Select **Properties** from the popup menu.
 4. Check the capacity of the hard disk drive.
 5. Click the **OK** button to close the properties window.
- 2 Empty your recycle bin on a regular basis.
 - 3 Use Diskkeeper Lite or the Microsoft Disk Defragmenter on your hard disk drive on a regular basis to improve data seek and read time. To start the Disk Defragmenter, click **Start -> All Programs -> Accessories -> System Tools -> Disk Defragmenter**.

❖ **Note:**

The instruction above is for Windows XP users only.

- To free up disk space, uninstall unused application programs.

❖ **Note:**

You might also want to look for application program duplication or overlapping versions.

- Clean out your Inbox, Sent, and Trash folders from your e-mail client program.
- At least once a week, make a point to back up your data. If critical data is present, it is a good idea to perform a daily backup.
- Use or schedule System Restore to take a system snapshot periodically.

❖ **Note:**

Always take a system snapshot before installing new drivers, updating software, or installing new software.

- Update device drivers and BIOS when needed.
- Profile your machine at <http://consumersupport.lenovo.com> to keep up to date with current drivers and revisions.
- Keep up to date on device drivers on other non-Lenovo hardware. You might want to read the device driver information release notes prior to updating for compatibility or known issues.
- Keep a log book. Entries might include major hardware or software changes, driver updates, minor issues you have experienced and how you resolved them.
- If you ever need to run a recovery operation on your computer to return the contents of the hard disk to the factory-installed state, the following tips might help along the way:

Chapter 6. Safety, use, and care information

- Remove all external devices such as the printer, keyboard, and so on.
 - Make sure that the battery is charged and that you have the AC power adapter connected.
 - Boot into the BIOS and load the default settings.
 - Turn off the computer and start the recovery process.
 - If your computer uses discs as the recovery media, do not remove the disc from the drive until you are prompted to do so.
- If required, you can find your country's Customer Support Center at the following Web address: <http://consumersupport.lenovo.com>. When calling the Customer Support Center, please make sure you have your machine type, model, and serial number available and the computer is in front of you. Also, if the machine is producing error codes, it is helpful to have the error screen on or the message written down.

Device drivers are programs that contain instructions for the operating system about how to operate or “drive” a certain piece of hardware. Each hardware component on your computer has its own specific driver. If you add a new component, the operating system needs to be instructed on how to operate that piece of hardware. After you install the driver, the operating system can recognize the hardware component and understand how to use it.

❖ **Note:**

Due to the fact that drivers are programs, like any other file on your computer, they are susceptible to corruption and might not perform properly if corruption occurs.

Chapter 7. Using Linpus Linux Lite

■ ■ Using Linpus Linux Lite


■ Start your computer

- ❶ Open the computer display, and press the power button to start the operating system.
- ❷ The system will automatically start and log on the desktop environment in the name of **user**.

❖ Note:

The user's default password is blank.

■ First start

The system will access to the desktop called **simple mode** when you first start Linux desktop. You may use the desktop mode shift button  on the taskbar, to shift between **simple mode** and **desktop mode**.

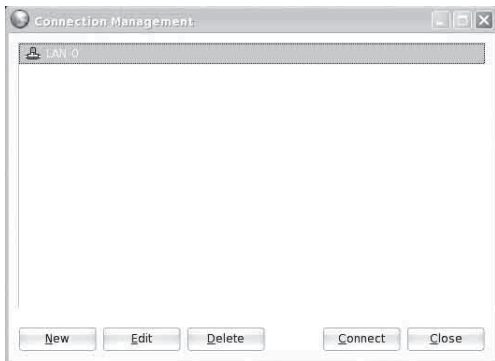
The system will automatically access to the latest desktop mode during the next start.

■ Set up network connection

You can use **Connection Manager** to set up network connection. Please left click network icon on the taskbar and choose **Connection Manager**.



The network in use is displayed on **Connection Management** window opened.



You can choose the saved connection name on the window and click **Connect** button to start the connection.

Click **New** button to set up a new network connection and finish new cable or wireless connection setup following the instructions below.

Cable network connection

Before connecting to a new cable network, please make sure your computer is correctly connected to a hub (or switch) through RJ-45 internet cable.

- 1 Choose **LAN** on **New connection** window.



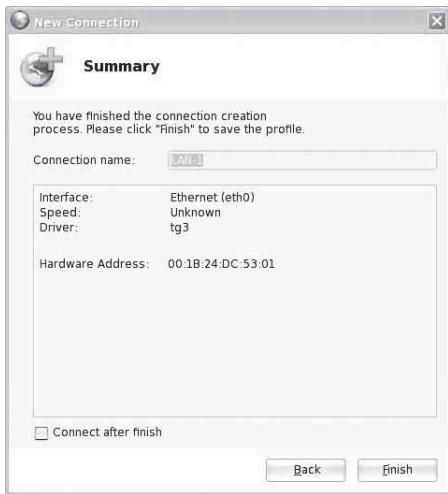
② DHCP method is used for cable network connection by default.

❖ **Note:**

For setting up TCP/IP manually, you may uncheck the checkbox **use DHCP as TCP/IP default and ignore TCP/IP page** and properly fill in the items on TCP/IP setting window. For the saved connection setting, you may also click **Edit** button on **Connection Management** window to set up TCP/IP.

The screenshot shows the 'Connection Properties' dialog box with the 'TCP/IP Summary' tab selected. The window title is 'Connection Properties' and it has a close button (X) in the top right corner. The tab is labeled 'TCP/IP Summary'. The main text says 'Please enter your TCP/IP information.' There are two radio button options: 'Obtain an IP address automatically (DHCP)' (which is selected) and 'Use the IP address as follows:'. Below the second option are three input fields for 'IP address', 'Subnet mask', and 'Default gateway'. There are also two more radio button options: 'Obtain the DNS server address automatically (DHCP)' and 'Use the DNS server address as follows:'. Below the second option are two input fields for 'Primary DNS Server' (containing '0 . 0 . 0 . 0') and 'Secondary DNS Server'. At the bottom right, there are 'Cancel' and 'Finish' buttons.

- 3 Input any name of connection on Summary window and click **Finish** button.



Wireless network connection

- 1 Choose **WLAN** on **New Connection** window.

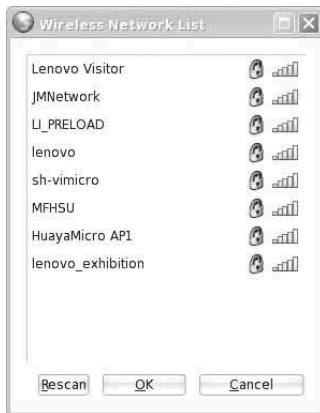


- 2 Input **Access Point Name (SSID)** and **Encryption type** of the wireless network in use on WLAN Setting window.

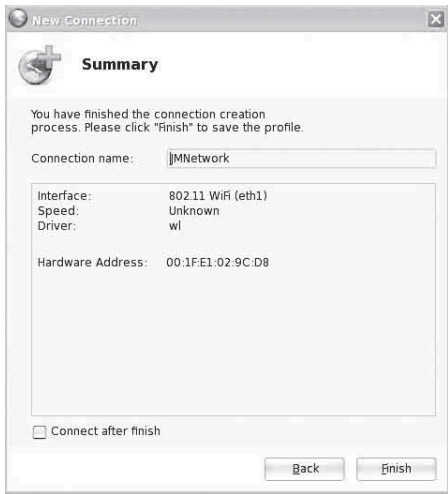



❖ **Note:**

You may also click **Select...** button to choose the wireless connection point selected upon automatic scanning.



- Input any name of connection on Summary window and click **Finish** button.



If the wireless network is successfully connected,  will appear on the taskbar. If not, please check the input items on the above steps.

Use PPPoE broadband connection

- 1 Choose PPPoE on **New Connection** window.



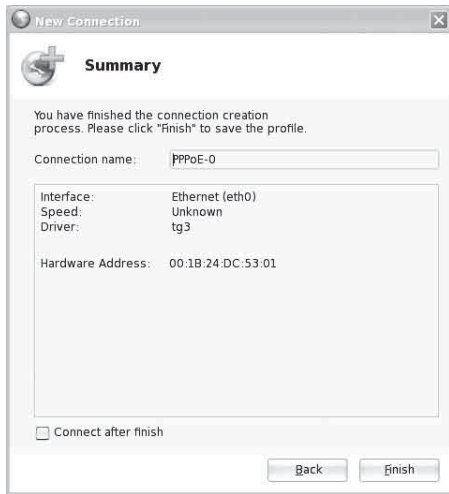
- 2 Input **Username** and **Password** on PPPoE Setting window.



The screenshot shows a window titled "New Connection" with a close button (X) in the top right corner. Below the title bar is a plus sign icon and the text "PPPoE Settings". A light gray instruction box contains the text: "Please specify an item. When this connection is applied, your computer will connect to the Internet via the DSL connection you selected." Below this are two input fields: "Username:" followed by a text box, and "Password:" followed by a text box. At the bottom of the window are three buttons: "Back", "Next", and "Cancel".

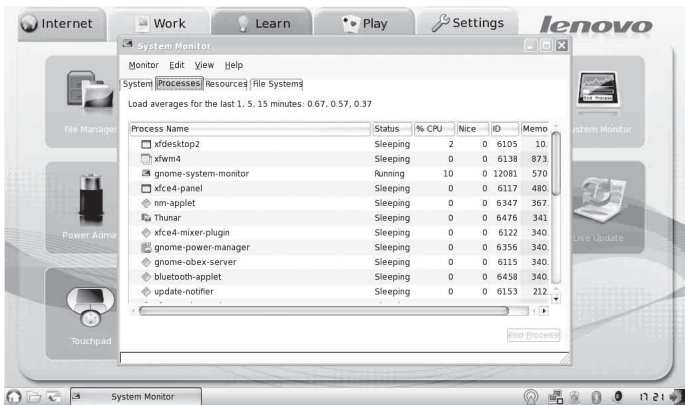
Chapter 7. Using Linpus Linux Lite

- 3 Input any name of connection on Summary window and click **Finish** button.



■ Task manager

Similar to Windows system, you may use <Ctrl> + <Alt> + Del at any time to start task manager, and end up the selected processing directly in Processes tab.



❖ Note:

Some process only allows super users to initiate, compulsory end of which may lead to failure or abnormal system operation. Unless you are familiar with Linux system, please use window close button to end up the program.

■ Power off your computer

For safe shutdown of your computer, please operate as follows:

- ➊ Click **Exit** button on the right of the toolbar.
- ➋ Click **Computer shutdown** on the dialogue box popped up.

Appendix A. Lenovo Limited Warranty

This Lenovo Limited Warranty applies only to Lenovo branded hardware products you purchased for your own use and not for resale.

This Lenovo Limited Warranty is available in other languages at www.lenovo.com/warranty.

■ What this warranty covers

Lenovo warrants that each hardware product that you purchase is free from defects in materials and workmanship under normal use during the warranty period. The warranty period for the product starts on the original date of purchase specified on your sales receipt or invoice unless Lenovo informs you otherwise in writing. The warranty period and type of warranty service that apply to your product are designated below under the section titled “Warranty Information.”

THIS WARRANTY IS YOUR EXCLUSIVE WARRANTY AND REPLACES ALL OTHER WARRANTIES OR CONDITIONS, EXPRESS OR IMPLIED, INCLUDING, BUT NOT LIMITED TO, THE IMPLIED WARRANTIES OR CONDITIONS OF MERCHANTABILITY AND FITNESS FOR A PARTICULAR PURPOSE. SOME STATES OR JURISDICTIONS DO NOT ALLOW THE EXCLUSION OF EXPRESS OR IMPLIED WARRANTIES, SO THE ABOVE EXCLUSION MAY NOT APPLY TO YOU. IN THAT EVENT, SUCH WARRANTIES APPLY ONLY TO THE EXTENT REQUIRED BY LAW AND ARE LIMITED IN DURATION TO THE WARRANTY PERIOD. NO WARRANTIES APPLY AFTER THAT PERIOD. SOME STATES OR JURISDICTIONS DO NOT ALLOW LIMITATIONS ON HOW LONG AN IMPLIED WARRANTY LASTS, SO THE ABOVE LIMITATION ON DURATION MAY NOT APPLY TO YOU.

Appendix A. Lenovo Limited Warranty

■ How to obtain warranty service

If the product does not function as warranted during the warranty period, you may obtain warranty service by contacting Lenovo or an approved service provider. Each of them is referred to as a “Service Provider.” A list of Service Providers and their telephone numbers is available at www.lenovo.com/support/phone.

Warranty service may not be available in all locations and may differ from location to location. Charges may apply outside a Service Provider’s normal service area. Contact a local Service Provider for location-specific information.

■ What your service provider will do to correct problems

When you contact a Service Provider, you must follow the problem determination and resolution procedures specified.

Your Service Provider will attempt to diagnose and resolve your problem over the telephone, e-mail or through remote assistance. Your Service Provider may direct you to download and install designated software updates.

Some problems can be resolved with a replacement part that you can install yourself called a “Customer Replaceable Unit” or “CRU.” If so, your Service Provider will ship the CRU to you for you to install.

If your problem cannot be resolved over the telephone or remotely, through your application of software updates or the installation of a CRU by you,

your Service Provider will arrange for service under the type of warranty service designated for the product under the section titled **“Warranty Information.”**

If your Service Provider determines that it is unable to repair your product, your Service Provider will replace it with one that is at least functionally equivalent.

If your Service Provider determines that it is unable to either repair or replace your product, your sole remedy is to return the product to your place of purchase or to Lenovo for a refund of your purchase price.

■ **Replacement of a product or part**

When the warranty service involves the replacement of a product or part, the replaced product or part becomes Lenovo’s property and the replacement product or part becomes your property. Only unaltered Lenovo products and parts are eligible for replacement. The replacement product or part provided by Lenovo may not be new, but it will be in good working order and at least functionally equivalent to the original product or part. The replacement product or part shall be warranted for the balance of the period remaining on the original product.

Before your Service Provider replaces a product or part, you agree to:

1. remove all features, parts, options, alterations, and attachments not under warranty service;
2. ensure that the product or part is free of any legal obligations or restrictions that prevent its replacement; and

Appendix A. Lenovo Limited Warranty

3. obtain authorization from the owner to have your Service Provider service a product or part if you do not own it.

■ Your additional responsibilities

Where applicable, before service is provided, you agree to:

1. follow the service request procedures that your Service Provider specifies;
2. backup or secure all programs and data contained in the product;
3. provide your Service Provider with all system keys or passwords and sufficient, free, and safe access to your facilities to perform service; and
4. ensure that all information about identified or identifiable individuals (“Personal Data”) is deleted from the product or that, with respect to any Personal Data that you did not delete, you are in compliance with all applicable laws.

■ Use of personal information

If you obtain service under this warranty, Lenovo will store, use and process information about your warranty service and your contact information, including name, phone numbers, address, and e-mail address. Lenovo will use this information to perform service under this warranty and to improve our business relationship with you. We may contact you to inquire about your satisfaction regarding our warranty service or to notify you about any product recalls or safety issues. In accomplishing these purposes, we may transfer your information to any country where we do business and may provide it to entities acting on our behalf. We may also disclose it where required by law.

■ What this warranty does not cover

This warranty does not cover the following:

- uninterrupted or error-free operation of a product;
- loss of, or damage to, your data;
- any software programs, whether provided with the product or installed subsequently;
- failure or damage resulting from misuse, accident, modification, unsuitable physical or operating environment, natural disasters, power surges, or improper maintenance by you;
- damage caused by a non-authorized service provider;
- failure of, or damage caused by, any third party products, including those that Lenovo may provide or integrate into the Lenovo product at your request; and
- any technical or other support, such as assistance with “how-to” questions and those regarding product set-up and installation.

This warranty is voided by removal or alteration of identification labels on the product or its parts.

■ Limitation of liability

Lenovo is responsible for loss or damage to your product only while it is: 1) in your Service Provider’s possession; or 2) in transit in those cases where the Service Provider is responsible for the transportation.

Appendix A. Lenovo Limited Warranty

Neither Lenovo nor your Service Provider is responsible for any of your data including confidential, proprietary, or personal data contained in a product. You should remove and/or backup all such information from the product prior to its service or return.

Circumstances may arise where, because of a default on Lenovo's part or other liability, you may be entitled to recover damages from Lenovo. In each such instance, regardless of the basis of your claim against Lenovo (including breach, negligence, misrepresentation, or other contract or tort claim), except and to the extent that liability cannot be waived or limited by applicable laws, Lenovo shall not be liable for more than the amount of actual direct damages suffered by you, up to the amount you paid for the product. This limit does not apply to damages for bodily injury (including death) and damage to real property or tangible personal property for which Lenovo is liable under law.

This limit also applies to Lenovo's suppliers, resellers, and your Service Provider. It is the maximum amount for which Lenovo, its suppliers, resellers, and your Service Provider are collectively responsible.

UNDER NO CIRCUMSTANCES SHALL LENOVO, ITS SUPPLIERS, RESELLERS, OR SERVICE PROVIDERS BE LIABLE FOR ANY OF THE FOLLOWING EVEN IF INFORMED OF THEIR POSSIBILITY: 1) THIRD PARTY CLAIMS AGAINST YOU FOR DAMAGES; 2) LOSS OR DAMAGE TO YOUR DATA; OR 3) SPECIAL, INCIDENTAL, INDIRECT OR CONSEQUENTIAL DAMAGES, INCLUDING LOST PROFITS, BUSINESS REVENUE, GOODWILL OR ANTICIPATED SAVINGS. AS SOME STATES OR JURISDICTIONS DO NOT ALLOW THE EXCLUSION OR LIMITATION OF INCIDENTAL OR

CONSEQUENTIAL DAMAGES, THE ABOVE LIMITATION OR EXCLUSION MAY NOT APPLY TO YOU.

■ **Dispute resolution**

If you acquired the product in **Cambodia, Indonesia, Philippines, Vietnam or Sri Lanka**, disputes arising out of or in connection with this warranty shall be finally settled by arbitration held in Singapore and this warranty shall be governed, construed and enforced in accordance with the laws of Singapore, without regard to conflict of laws. If you acquired the product in **India**, disputes arising out of or in connection with this warranty shall be finally settled by arbitration held in Bangalore, India. Arbitration in Singapore shall be held in accordance with the Arbitration Rules of Singapore International Arbitration Center (“SIAC Rules”) then in effect. Arbitration in India shall be held in accordance with the laws of India then in effect. The arbitration award shall be final and binding on the parties without appeal. Any award shall be in writing and set forth the findings of fact and the conclusions of law. All arbitration proceedings, including all documents presented in such proceedings, shall be conducted in the English language, and the English language version of this warranty prevails over any other language version in such proceedings.

Appendix A. Lenovo Limited Warranty

■ Other rights

THIS WARRANTY GIVES YOU SPECIFIC LEGAL RIGHTS AND YOU MAY HAVE OTHER RIGHTS WHICH VARY FROM STATE TO STATE OR JURISDICTION TO JURISDICTION. YOU MAY ALSO HAVE OTHER RIGHTS UNDER APPLICABLE LAW OR WRITTEN AGREEMENT WITH LENOVO. NOTHING IN THIS WARRANTY AFFECTS STATUTORY RIGHTS, INCLUDING RIGHTS OF CONSUMERS UNDER NATIONAL LEGISLATION GOVERNING THE SALE OF CONSUMER GOODS THAT CANNOT BE WAIVED OR LIMITED BY CONTRACT.

■ European Economic Area (EEA)

Customers in the EEA may contact Lenovo at the following address: EMEA Service Organisation, Lenovo (International) B.V., Floor 2, Einsteinova 21, 851 01, Bratislava, Slovakia. Service under this warranty for Lenovo hardware products purchased in EEA countries may be obtained in any EEA country in which the product has been announced and made available by Lenovo.

Warranty information

Product or Machine Type	Country or Region of Purchase	Warranty Period	Type of Warranty Service
Notebook: 20013, 20015, 4067, 4231	Taiwan	Parts and Labor - 1 year Battery pack - 1 year	3, 4
	China (Hong Kong S.A.R.), China (Macau S.A.R.)		1, 4
	United States of America, United States of America (Web Direct Mode), Canada		1, 3
	India, Indonesia, Malaysia, Singapore, Thailand, Philippines, Vietnam, South Africa, Australia, New Zealand, France, Mexico		1, 3 or 4
	Russia, Ukraine, Kazakhstan		4
	Poland, Turkey		Parts and Labor -2 years Battery pack - 1 year

If required, your Service Provider will provide repair or exchange service depending on the type of warranty service specified for your product and the available service. Scheduling of service will depend upon the time of your call, parts availability, and other factors.

Appendix A. Lenovo Limited Warranty

A warranty period of three (3) years on parts and one (1) year on labor means that Lenovo will provide warranty service without charge for:

- a. parts and labor during the first year of the warranty period (or a longer period as required by law); and
- b. parts only, on an exchange basis, in the second and third years of the warranty period. Your Service Provider will charge you for any labor provided in performance of the repair or replacement in the second and third years of the warranty period.

■ Types of warranty service

① Customer Replaceable Unit (“CRU”) Service

Under CRU Service, your Service Provider will ship CRUs to you for installation by you. CRU information and replacement instructions are shipped with your product and are available from Lenovo at any time upon request. CRUs that are easily installed by you are called Self-service CRUs, while Optional-service CRUs may require some technical skill and tools. Installation of Self-service CRUs is your responsibility. You may request that a Service Provider install Optional-service CRUs under one of the other types of warranty service designated for your product. An optional service offering may be available for purchase from Lenovo to have Lenovo install Self-service CRUs for you. You may find a list of CRUs and their designation in the publication that ships with your product or at www.lenovo.com/CRUs. The requirement to return a defective CRU, if any, will be specified in the materials shipped with a replacement CRU. When return is required: 1) return instructions, a prepaid return shipping label, and a container will be included with the replacement CRU; and 2)

you may be charged for the replacement CRU if your Service Provider does not receive the defective CRU within thirty (30) days of your receipt of the replacement.

2 On-site Service

Under On-Site Service, your Service Provider will either repair or exchange the product at your location. You must provide a suitable working area to allow disassembly and reassembly of the Lenovo product. For some products, certain repairs may require your Service Provider to send the product to a designated service center.

3 Courier or Depot Service

Under Courier or Depot Service, your product will be repaired or exchanged at a designated service center, with shipping arranged by your Service Provider. You are responsible for disconnecting the product. A shipping container will be provided to you for you to return your product to a designated service center. A courier will pick up your product and deliver it to the designated service center. Following its repair or exchange, the service center will arrange the return delivery of the product to you.

4 Customer Carry-in or Mail-in Service

Under Customer Carry-In or Mail-In Service, your product will be repaired or exchanged at a designated service center, with delivery or shipping arranged by you. You are responsible to deliver or mail, as your Service Provider specifies, (prepaid by you unless specified otherwise) the product, suitably packaged to a designated location. After the product has been repaired or exchanged, it will be made available for your collection. Failure to collect the product may result in your Service Provider disposing of the

Appendix A. Lenovo Limited Warranty

product as it sees fit. For Mail-in Service, the product will be returned to you at Lenovo's expense, unless your Service Provider specifies otherwise.

5 Product Exchange Service

Under Product Exchange Service, Lenovo will ship a replacement product to your location. You are responsible for its installation and verification of its operation. The replacement product becomes your property in exchange for the failed product, which becomes the property of Lenovo. You must pack the failed product in the shipping carton used to ship the replacement product and return it to Lenovo. Transportation charges, both ways, are paid by Lenovo. Failure to use the carton in which the replacement product was received may result in your responsibility for damage to the failed product during shipment. You may be charged for the replacement product if Lenovo does not receive the failed product within thirty (30) days of your receipt of the replacement product.

■ ■ **Lenovo warranty service telephone numbers** ---

Warranty service telephone numbers

The phone numbers provided below are correct as of the time of printing and are subject to change without notice. For the latest warranty service contact telephone number in a country please contact Lenovo, or your reseller in your country.

- Singapore 800 6012 047
- Malaysia 1800 18 2388
- Thailand 1800 06 0087
- Indonesia 001 803 0601 2003
- Philippines 1800 111 00724
- Vietnam 1800 1528
- India Toll free 1800 113324
 - Alternate No. 011-26388288
 - SMS 9900173324
- P.R.China 400-810-8888
- Hong Kong (852) 2516-3919
- Taiwan (886) 0800-000-702
- Macau 0800-689
- United States 1-877-453-6686
- Canada 1-877-453-6686
- France 0826-536-686
- South Africa 0861-536-686

Appendix A. Lenovo Limited Warranty

- Australia 1300 557 073
- New Zealand 0800 446 833
- Russia Toll free 8-800-700-7888
Alternate No. +7-(495) 662-7888
- Poland 0800-702-062
- Turkey 0811-267-7777
- Mexico 01-800-92536686
- Ukraine +38 044 458-38-70
- Kazakhstan +7 (727) 2971150
+7 (727) 2971160
- Brazil Toll Number Sao Paulo Region : 55-11-4003-5366
Toll Free Number Outside of Sao Paulo Region :
0800-888-5366

Additionally, you can find support information, and updates, including service phone numbers for unlisted countries on the Lenovo Web site located at:

<http://consumersupport.lenovo.com>.

Appendix B. Customer replaceable units (CRUs)

Customer Replaceable Units (CRUs) are computer parts that can be upgraded or replaced by the customer. There are two types of CRUs: *internal* and *external*. External CRUs are easy to install, whereas internal CRUs require some technical skills and in some cases might require tools such as a screwdriver. However, both internal and external CRUs are safe for removal by the customer.

Customers are responsible for replacing all external CRUs. Internal CRUs can be removed and installed by customers or by a Lenovo service technician during the warranty period.

Your computer contains the following types of external CRUs:

- **External CRUs (pluggable):** These CRUs unplug from the computer. Examples of these types of CRUs include the AC adapter and power cord.
- **External CRUs with latches:** These CRUs include a latch to help you remove and replace the part. Examples of these types of CRUs include the notebook main battery, and an extended battery.

Your computer contains the following types of internal CRUs:

- **Internal CRUs (located behind an access panel):** These CRUs are isolated parts within the computer that are concealed by an access panel that is typically secured by either one or two screws. Once the access panel is removed, only the specific CRU is visible. Examples of these types of CRUs include memory modules and hard disk drives.
- **Internal CRUs (located within the product):** These CRUs are accessible only by opening the computer's outer case. Examples of these CRUs include PCI Express Mini Cards and the integrated keyboard.

Appendix C. Specifications

■ ■ Specifications

Size

- Width: approximate 250.2 mm
- Depth: approximate 183 mm
- Height: approximate 22 to 27.5 mm

Environment

- Temperature
5° to 35°C (41° to 95°F)
 - ❖ **Note:**
When you charge the battery pack, its temperature must be at least 10°C (50°F).
- Relative humidity:
 - Operating with no optical disc in the drive: 8% to 95%
 - Operating with an optical disc in the drive: 8% to 80%

Power source (AC adapter)

- Input rating of the AC adapter: 100-240 V ac, 50 to 60 Hz
- 40W / 65W

Battery pack

- Lithium-ion (Li-Ion) battery pack
 - Nominal voltage: 11.1 V dc
 - Capacity: 52Wh (6 cells) or 28Wh (3 cells)

Appendix D. Notices

■ ■ Notices

Lenovo may not offer the products, services, or features discussed in this document in all countries. Consult your local Lenovo representative for information on the products and services currently available in your area. Any reference to a Lenovo product, program, or service is not intended to state or imply that only that Lenovo product, program, or service may be used. Any functionally equivalent product, program, or service that does not infringe any Lenovo intellectual property right may be used instead. However, it is the user's responsibility to evaluate and verify the operation of any other product, program, or service.

Lenovo may have patents or pending patent applications covering subject matter described in this document. The furnishing of this document does not give you any license to these patents. You can send license inquiries, in writing, to:

*Lenovo (United States), Inc.
1009 Think Place - Building One
Morrisville, NC 27560
U.S.A.*

Attention: Lenovo Director of Licensing

LENOVO PROVIDES THIS PUBLICATION "AS IS" WITHOUT WARRANTY OF ANY KIND, EITHER EXPRESS OR IMPLIED, INCLUDING, BUT NOT LIMITED TO, THE IMPLIED WARRANTIES OF NON-INFRINGEMENT, MERCHANTABILITY OR FITNESS FOR A PARTICULAR PURPOSE. Some jurisdictions do not allow disclaimer of express or implied warranties in certain transactions, therefore, this statement may not apply to you.

This information could include technical inaccuracies or typographical errors. Changes are periodically made to the information herein; these changes will be incorporated in new editions of the publication. Lenovo may make improvements and/or changes in the product(s) and/or the program(s) described in this publication at any time without notice.

The products described in this document are not intended for use in implantation or other life support applications where malfunction may result in injury or death to persons. The information contained in this document does not affect or change Lenovo product specifications or warranties. Nothing in this document shall operate as an express or implied license or indemnity under the intellectual property rights of Lenovo or third parties. All information contained in this document was obtained in specific environments and is presented as an illustration. The result obtained in other operating environments may vary.

Lenovo may use or distribute any of the information you supply in any way it believes appropriate without incurring any obligation to you.

Any references in this publication to non-Lenovo Web sites are provided for convenience only and do not in any manner serve as an endorsement of those Web sites. The materials at those Web sites are not part of the materials for this Lenovo product, and use of those Web sites is at your own risk.

Any performance data contained herein was determined in a controlled environment. Therefore, the result obtained in other operating environments may vary significantly. Some measurements may have been made on development-level systems and there is no guarantee that these measurements will be the same on generally available systems. Furthermore, some measurements may have been estimated through

Appendix D. Notices

extrapolation. Actual results may vary. Users of this document should verify the applicable data for their specific environment.

The software interface and hardware configuration described in all the manuals included with your computer may not match the actual configuration of the computer you purchased.

■ **Export classification notice**

This product is subject to the United States Export Administration Regulations (EAR) and has an Export Classification Control Number (ECCN) of 4A994.b. It can be re-exported except to any of the embargoed countries in the EAR E1 country list.

■ **Television output notice**

The following notice applies to models that have the factory-installed television-output feature.

This product incorporates copyright protection technology that is protected by U.S. patents and other intellectual property rights. Use of this copyright protection technology must be authorized by Macrovision, and is intended for home and other limited viewing uses only unless otherwise authorized by Macrovision. Reverse engineering or disassembly is prohibited.

■ ■ Wireless related information

■ Wireless Interoperability

Wireless LAN PCI Express Mini Card is designed to be interoperable with any wireless LAN product that is based on Direct Sequence Spread Spectrum (DSSS), Complementary Code Keying (CCK), and/or Orthogonal Frequency Division Multiplexing (OFDM) radio technology, and is compliant to:

- The IEEE 802.11a/b/g/n Standard on wireless LANs, as defined and approved by the Institute of Electrical and Electronics Engineers.
- The Wireless Fidelity (WiFi) certification as defined by the Wi-Fi Alliance.

Bluetooth Daughter Card is designed to be interoperable with any *Bluetooth* product that is compliant to *Bluetooth* Specification 2.0 + EDR as defined by the *Bluetooth* SIG. Following profiles are supported by *Bluetooth* Daughter Card:

- Generic Access
- Service Discovery
- Serial Port
- Dial-up Networking
- FAX
- LAN Access using PPP
- Personal Area Network
- Generic Object Exchange
- Generic Object Push
- File Transfer
- Synchronization
- Audio Gateway
- Headset
- Printer

Appendix D. Notices

- Human Interface Devices (Keyboard/Mouse)
- Basic Image
- Handsfree
- AV

■ Usage environment and your health

Wireless LAN PCI Express Mini Card and *Bluetooth* Daughter Card emit radio frequency electromagnetic energy like other radio devices. However, the level of energy emitted is far much less than the electromagnetic energy emitted by wireless devices like for example mobile phones.

Due to the fact that wireless LAN PCI Express Mini Card and *Bluetooth* Daughter Card operate within the guidelines found in radio frequency safety standards and recommendations, Lenovo believes the integrated wireless cards are safe for use by consumers. These standards and recommendations reflect the consensus of the scientific community and result from deliberations of panels and committees of scientists who continually review and interpret the extensive research literature.

In some situation or environment, the use of wireless LAN PCI Express Mini Card or *Bluetooth* Daughter Card may be restricted by the proprietor of the building or responsible representatives of the organization. These situations may for example include:

- Using the integrated wireless cards on board of airplanes, or in hospitals
- In any other environment where the risk of interference to other devices or services is perceived or identified as harmful.

If you are uncertain of the policy that applies on the use of wireless devices in a specific organization (e.g., airport or hospital), you are encouraged to ask for authorization to use wireless LAN PCI Express Mini Card or *Bluetooth* Daughter Card prior to turning on the computer.

■ ■ Electronic emissions notices

The following information refers to Lenovo IdeaPad S9/S10, machine type 20013, 20015, 4067, 4231.

■ Federal Communications Commission (FCC) Statement

This equipment has been tested and found to comply with the limits for a Class B digital device, pursuant to Part 15 of the FCC Rules. These limits are designed to provide reasonable protection against harmful interference in a residential installation. This equipment generates, uses, and can radiate radio frequency energy and, if not installed and used in accordance with the instructions, may cause harmful interference to radio communications. However, there is no guarantee the interference will not occur in a particular installation. If this equipment does cause harmful interference to radio or television reception, which can be determined by turning the equipment off and on, the user is encouraged to try to correct the interference by one or more of the following measures:

- Reorient or relocate the receiving antenna.
- Increase the separation between the equipment and receiver.
- Connect the equipment into an outlet on a circuit different from that to which the receiver is connected.
- Consult an authorized dealer or service representative for help.

Properly shielded and grounded cables and connectors must be used in order to meet FCC emission limits. Proper cables and connectors are available from Lenovo authorized dealers. Lenovo is not responsible for any radio or television interference caused by using other than

Appendix D. Notices

recommended cables or connectors or by unauthorized changes or modifications to this equipment. Unauthorized changes or modifications could void the user's authority to operate the equipment.

This device complies with Part 15 of the FCC Rules. Operation is subject to the following two conditions: (1) this device may not cause harmful interference, and (2) this device must accept any interference received, including interference that may cause undesired operation.

Responsible party:

Lenovo (United States) Incorporated
1009 Think Place - Building One
Morrisville, NC 27650

U.S.A.

Telephone: (919) 294-5900



■ **Industry Canada Class B Emission Compliance Statement**

This Class B digital apparatus complies with Canadian ICES-003.

■ **Avis de conformité à la réglementation d'Industrie Canada**

Cet appareil numérique de la classe B est conforme à la norme NMB-003 du Canada.

■ German Class B Compliance Statement

Deutschsprachiger EU Hinweis:

Hinweis für Geräte der Klasse B EU-Richtlinie zur Elektromagnetischen Verträglichkeit

Dieses Produkt entspricht den Schutzanforderungen der EU-Richtlinie 2004/108/EG (früher 89/336/EWG) zur Angleichung der Rechtsvorschriften über die elektromagnetische Verträglichkeit in den EU-Mitgliedsstaaten und hält die Grenzwerte der EN 55022 Klasse B ein.

Um dieses sicherzustellen, sind die Geräte wie in den Handbüchern beschrieben zu installieren und zu betreiben. Des Weiteren dürfen auch nur von der Lenovo empfohlene Kabel angeschlossen werden. Lenovo übernimmt keine Verantwortung für die Einhaltung der Schutzanforderungen, wenn das Produkt ohne Zustimmung der Lenovo verändert bzw. wenn Erweiterungskomponenten von Fremdherstellern ohne Empfehlung der Lenovo gesteckt/eingebaut werden.

Deutschland:

Einhaltung des Gesetzes über die elektromagnetische Verträglichkeit von Betriebsmitteln

Dieses Produkt entspricht dem "Gesetz über die elektromagnetische Verträglichkeit von Betriebsmitteln" EMVG (früher "Gesetz über die elektromagnetische Verträglichkeit von Geräten"). Dies ist die Umsetzung der EU-Richtlinie 2004/108/EG (früher 89/336/EWG) in der Bundesrepublik Deutschland.

Appendix D. Notices

Zulassungsbescheinigung laut dem Deutschen Gesetz über die elektromagnetische Verträglichkeit von Betriebsmitteln, EMVG vom 20. Juli 2007 (früher Gesetz über die elektromagnetische Verträglichkeit von Geräten), bzw. der EMV EG Richtlinie 2004/108/EC (früher 89/336/EWG), für Geräte der Klasse B.

Dieses Gerät ist berechtigt, in Übereinstimmung mit dem Deutschen EMVG das EG-Konformitätszeichen - CE - zu führen. Verantwortlich für die Konformitätserklärung nach Paragraf 5 des EMVG ist die Lenovo (Deutschland) GmbH, Gropiusplatz 10, D-70563 Stuttgart.

Informationen in Hinsicht EMVG Paragraf 4 Abs. (1) 4:
Das Gerät erfüllt die Schutzanforderungen nach EN 55024 und EN 55022 Klasse B.

■ European Union Compliance Statement Class B Compliance

European Union - Compliance to the Electromagnetic Compatibility Directive

This product is in conformity with the protection requirements of EU Council Directive 2004/108/EC on the approximation of the laws of the Member States relating to electromagnetic compatibility. Lenovo cannot accept responsibility for any failure to satisfy the protection requirements resulting from a non-recommended modification of the product, including the installation of option cards from other manufacturers.

This product has been tested and found to comply with the limits for Class B Information Technology Equipment according to European Standard EN 55022. The limits for Class B equipment were derived for typical residential environments to provide reasonable protection against interference with licensed communication devices.

Properly shielded and grounded cables and connectors must be used in order to reduce the potential for causing interference to radio and TV communications and to other electrical or electronic equipment. Such cables and connectors are available from Lenovo authorized dealers. Lenovo cannot accept responsibility for any interference caused by using other than recommended cables and connectors.

Appendix D. Notices

■ Japanese VCCI Class B Statement

この装置は、情報処理装置等電波障害自主規制協議会（VCCI）の基準に基づくクラスB情報技術装置です。この装置は、家庭環境で使用することを目的としていますが、この装置がラジオやテレビジョン受信機に近接して使用されると、受信障害を引き起こすことがあります。

取扱説明書に従って、正しい取り扱いをして下さい。

■ Japan Compliance Statement for Power line Harmonics

A statement of compliance to the IEC 61000-3-2 harmonics standard is required for all products connecting to the power mains and rated less than 20A per phase.

日本の定格電流が 20A/相 以下の機器に対する高調波電流規制

高調波電流規格 JIS C 61000-3-2 適合品

■ Korea Class B

이 기기는 가정용으로 전자파적합등록을 한 기기로서 주거 지역에서는 물론 모든 지역에서 사용할 수 있습니다.

■ ■ WEEE and recycling statements

■ General recycling statement

Lenovo encourages owners of information technology (IT) equipment to responsibly recycle their equipment when it is no longer needed. Lenovo offers a variety of programs and services to assist equipment owners in recycling their IT products. Information on product recycling offerings can be found on Lenovo's Internet site at <http://www.pc.ibm.com/ww/lenovo/about/environment>

■ ■ EU WEEE Statements

The Waste Electrical and Electronic Equipment (WEEE) mark applies only to countries within the European Union (EU) and Norway. Appliances are labeled in accordance with European Directive 2002/96/EC concerning waste electrical and electronic equipment (WEEE). The Directive determines the framework for the return and recycling of used appliances as applicable throughout the European Union. This label is applied to various products to indicate that the product is not to be thrown away, but rather reclaimed upon end of life per this Directive.

Users of electrical and electronic equipment (EEE) with the WEEE marking per Annex IV of the WEEE Directive must not dispose of end of life EEE as unsorted municipal waste, but use the collection framework available to them for the return, recycle, recovery of WEEE and minimize any potential effects of EEE on the environment and human health due to the presence of hazardous substances. For additional WEEE information go to:
<http://consumersupport.lenovo.com>.

■ ■ Japan Recycling Statements

■ Collecting and Recycling a Disused Lenovo Computer or Monitor

If you are a company employee and need to dispose of a Lenovo computer or monitor that is the property of the company, you must do so in accordance with the Law for Promotion of Effective Utilization of Resources. Computers and monitors are categorized as industrial waste and should be properly disposed of by an industrial waste disposal contractor certified by a local government. In accordance with the Law for Promotion of Effective Utilization of Resources, Lenovo Japan provides, through its PC Collecting and Recycling Services, for the collecting, reuse, and recycling of disused computers and monitors. For details, visit the Lenovo Web site at

www.ibm.com/jp/pc/service/recycle/pcrecycle

<http://www.ibm.com/jp/pc/service/recycle/pcrecycle>

Pursuant to the Law for Promotion of Effective Utilization of Resources, the collecting and recycling of home-used computers and monitors by the manufacturer was begun on October 1, 2003. This service is provided free of charge for home-used computers sold after October 1, 2003. For details, visit the Lenovo Web site at

www.ibm.com/jp/pc/service/recycle/personal

<http://www.ibm.com/jp/pc/service/recycle/personal>

■ **Disposing of a Lenovo Computer Components**

Some Lenovo computer products sold in Japan may have components that contain heavy metals or other environmental sensitive substances. To properly dispose of disused components, such as a printed circuit board or drive, use the methods described above for collecting and recycling a disused computer or monitor.

■ **Disposing a Disused Battery Pack from Lenovo Notebook Computers**

Your Lenovo notebook computer has a lithium ion battery pack or a nickel metal hydride battery pack. If you are a company employee who uses a Lenovo notebook computer and need to dispose of a battery pack, contact the proper person in Lenovo sales, service, or marketing, and follow that person's instructions. You also can refer to the instructions at www.ibm.com/jp/pc/environment/recycle/battery
<http://www.ibm.com/jp/pc/environment/recycle/battery>

If you use a Lenovo notebook computer at home and need to dispose of a battery pack, you must comply with local ordinances and regulations. You also can refer to the instructions at www.ibm.com/jp/pc/environment/recycle/battery
<http://www.ibm.com/jp/pc/environment/recycle/battery>

■ ■ Notice for Users in the U.S.A.

California Perchlorate Information:

Products containing CR (manganese dioxide) lithium coin cell batteries may contain perchlorate.

Perchlorate Material — special handling may apply.

See <http://www.dtsc.ca.gov/hazardouswaste/perchlorate>.

■ ■ Notice on deleting data from your hard disk

As computers spread into every corner of life, they process more and more information. The data on your computer, some of it sensitive, is stored on a storage device called the hard disk. Before you dispose of, sell, or hand over your computer, you need to delete that data.

Handing your computer over to someone else without deleting the loaded software, such as operating systems and application software, may even violate License Agreements. You are advised to check the terms and conditions of those Agreements.

Deleting the data from the hard disk is not easy.

There are methods that seem to delete the data:

- Move the data to the recycle bin, and then choose the Empty recycle bin command.
- Use the Delete command.
- Format your hard disk, using the software for initializing it.

Appendix D. Notices

- Using the preinstalled recovery program, bring the hard disk back to factory-ship state.

These operations, however, only change the file allocation of the data; they do not delete the data itself. In other words, the data retrieval processing is disabled under an operating system such as Windows. The data is still there, even though it seems to be lost. Thus, it is sometimes possible to read the data by use of special software for data recovery. There is a risk that people of bad faith may read and misuse the critical data on hard disks for unexpected purposes.

To prevent the leakage of data, it becomes very important that you take responsibility for deleting all the data from the hard disk when you dispose of, sell, or hand over your computer. You can destroy the data physically by smashing the hard disk with a hammer, or magnetically by means of strong magnetic power, thus making the data unreadable. But we recommend that you make use of the software (payware) or service (pay service) specifically developed for the purpose.

■ ■ Trademarks

Lenovo, lenovo logo, IdeaPad and OneKey Rescue (OneKey Recovery, OneKey AntiVirus) are either registered trademarks or trademarks of Lenovo in the United States and/or other countries.

Microsoft, Windows, Windows XP and Windows Live are trademarks of Microsoft Corporation in the United States, other countries, or both.

All other trademarks and registered trademarks are trademarks or registered trademarks of their respective holders. In this manual, TM and ® marks are not specified.

Index

A

- AC adapter
Using 31

B

- Battery
Charging..... 34
- Bluetooth*
Connecting 42
Interoperability 127
Switch..... 2, 13
Usage environment..... 128

C

- Camera 16
- Caring your computer 78
- Cleaning
Computer cover 84
Computer display 86
Computer keyboard 85
- Customer Replaceable Unit (CRU)
parts list..... 121
- Customer support center..... 55

D

- Display
Cleaning 86
- Drivers..... 31

E

- ExpressCard/34" slot..... 38

F

- FCC Statement 129
- Frequently asked questions 43
- Function key combinations 12

H

- Hard disk drive
Problems..... 52
- Headphone jack 40
- Help
Customer support center 55
Help and service 54
on the Web 55
- Hibernation mode problems 48

I

Internet17

K

Keyboard
 Cleaning.....85
 Problems.....47
 Using.....11

L

Lenovo limited warranty107

M

Maintenance89
 Memory card slot15
 Microphone
 Built-in2
 External.....41
 Mobile Broadband.....19

N

Notice
 Electronic emissions129
 EU environmental133
 for US users139
 Numeric keypad.....11

O

OneKey Rescue System button.....2

P

Password
 Problems47
 Using.....26
 Power button2
 Problems
 Battery.....51
 Computer screen49
 Display45
 Hard Disk Drive52
 Hibernation mode48
 Keyboard47
 Password47

Index

Sound	51
Standby mode	48
Startup	52

S

Security	25
Speaker	5
Specifications	122
Storage media	
Handling	82

T

Touchpad	10
Trademarks	141
Troubleshooting.....	45

U

USB port	3, 4, 36
----------------	----------

V

VGA port.....	3, 39
---------------	-------

W

Wireless LAN

Connecting	18
Interoperability	127
Usage environment.....	128

lenovo



**If your product is not working correctly,
DO NOT RETURN IT TO THE STORE.**

For technical assistance, contact a Lenovo support specialist 24 hours a day by calling toll free **1-877-4 LENOVO (1-877-453-6686)**.

Additionally, you can find support information and updates on the Lenovo Web site located at **<http://consumersupport.lenovo.com>**.

* Only for the users from the United States.

New World. New Thinking.™

www.lenovo.com

©Lenovo China 2009

lenovo



P/N:147002167
Printed in China

Free Manuals Download Website

<http://myh66.com>

<http://usermanuals.us>

<http://www.somanuals.com>

<http://www.4manuals.cc>

<http://www.manual-lib.com>

<http://www.404manual.com>

<http://www.luxmanual.com>

<http://aubethermostatmanual.com>

Golf course search by state

<http://golfingnear.com>

Email search by domain

<http://emailbydomain.com>

Auto manuals search

<http://auto.somanuals.com>

TV manuals search

<http://tv.somanuals.com>