



LG

Life's Good



OWNER'S MANUAL

Mouse Scanner

LSM-100


Disassembling the mouse may cause malfunction to the product. Do not disassemble the mouse. LG Electronics is not responsible for problems caused by disassembling the product by users or non-authorized personnel.


This product combines the features of a scanner and a mouse to enhance the mobility and convenience. It can be used either as a scanner or a mouse.

Please read the safety information carefully before using the product.

Safety Precautions

There are two types of precautions: "Warning" and "Caution".

 **Warning** : Failure to observe these instructions may result in serious injury or death.


 **Caution** : Failure to observe these instructions may result in minor injury or damage to the product.

 **Tip** : Following the tips can prevent malfunction or damage to the product.

 : This symbol indicates a prohibited use of the product.


- After reading this manual, make sure to keep it in a place where you can easily access while using the product.
- The following safety precautions are intended to guide you to the safe and correct use of the product and prevent unwanted accident or damage.

Warning

Do not use or store the product in direct sunlight or near a hot object (e.g., a heater or fireplace). 


- Otherwise, this may result in fire due to excessive heat.



Do not place a container filled with liquid such as vase, flowerpot, cup, cosmetics/toiletry or chemicals/medicine near the product. 


- Otherwise, this may result in personal injury or death due to fire or electric shock.



Do not direct the LED light or the laser beam towards your eyes. 


- Otherwise, this may cause damage to your eyesight or a loss of vision.



Do not use the product if liquid such as water, chemicals or oil is spilled on the product. 

- Otherwise, this may cause fire or electric shock.



If the product is emitting smoke, unusual odors or sounds, stop using the product immediately and disconnect it from the computer. 

- Otherwise, this may cause fire or electric shock.




Using the mouse for a prolonged time can cause serious injuries or disorders, and excessive computer work can cause fatigue to your body, including hands, feet, shoulder and neck.

If such pains continue, this can lead to muscles and musculoskeletal disorders such as Carpal Tunnel Syndrome (CTS). If you experience fatigue or discomfort, please consult your local doctor."

The following measures are recommended to reduce the risk of injury.


- Take a rest at regular intervals.
- Stretch your arm and shoulder muscles regularly.
- Place the mouse in a convenient position.

 Caution

Do not install the product in an extremely hot (over 35 °C) or cold (under 5 °C) area, or with high temperature variation. 


- Otherwise, this may cause malfunction or damage to the product.



Do not install the device in an area prone to static electricity or excessive heat. 


- Otherwise, this may cause malfunction or damage to the product.



Do not install the product in a humid or dusty area. 


- Otherwise, this may cause malfunction or damage to the product.



Do not disassemble, modify or repair the product. 


- Otherwise, this may cause the product to break down, increase the safety risk, and voids the warranty of the product.



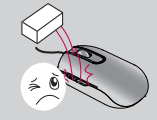
Be careful not to spill liquid such as water, chemicals or oil on the product. 


- Otherwise, this may cause malfunction or damage to the product.



Do not apply excessive shock to the product. 


- Otherwise, this may cause malfunction or damage to the product.



Do not apply excessive bending or shock to the cable. 

- Otherwise, this may cause malfunction or damage to the product.



Be careful not to drop the product or apply excessive shock to the scan window at the bottom of the product. 

- Otherwise, this may cause malfunction or damage to the product.



Always read and follow the owner's manual when using or removing the product.

- Improper use may cause malfunction or damage to the product.



Contents

1

Before Using

- 2 Safety Precautions
- 5 Product Components
- 5 - Components and Parts
- 6 Introduction

2

3

Installation

- 7 Installing the Mouse Scanner Program
- 7 - System Requirements
- 8 - How to Install

Using the Product

- 9 Using the Mouse Scanner Program
- 11 - Using the Scanner
- 12 - Exclusive Features of the Mouse Scanner
- 13 - Edit
- 14 - Paste Image / Paste Text / Share
- 15 - Save / Print / Edit / Settings
- 18 - System Menu (S-logo)
- 19 - How to Add Your Social Networking Accounts
: Flickr, Twitter, Facebook, Mail
- 21 Product Specifications

Product Components

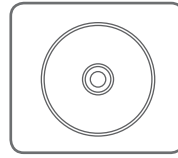
Components and Parts



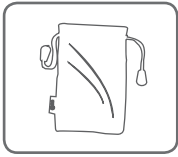
1. Mouse Scanner



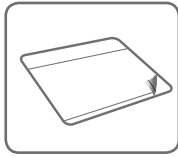
2. Quick Guide



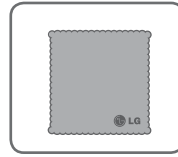
3. CD



4. Pouch

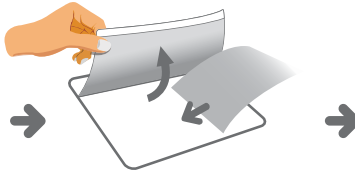


5. Mouse Pad



6. Cleaner (Composite Fiber)

How to use the mouse pad



Tip

- After purchasing the product, make sure that all of the following components are included in the package. If any components are missing or damaged, contact the retail store you purchased the product immediately.
- The components may look different from the images shown here. Some components are subject to change to improve the performance of the product.
- If your computer is unable to read the CD, you can download the file at www.lg.com or www.lgservice.com



Caution

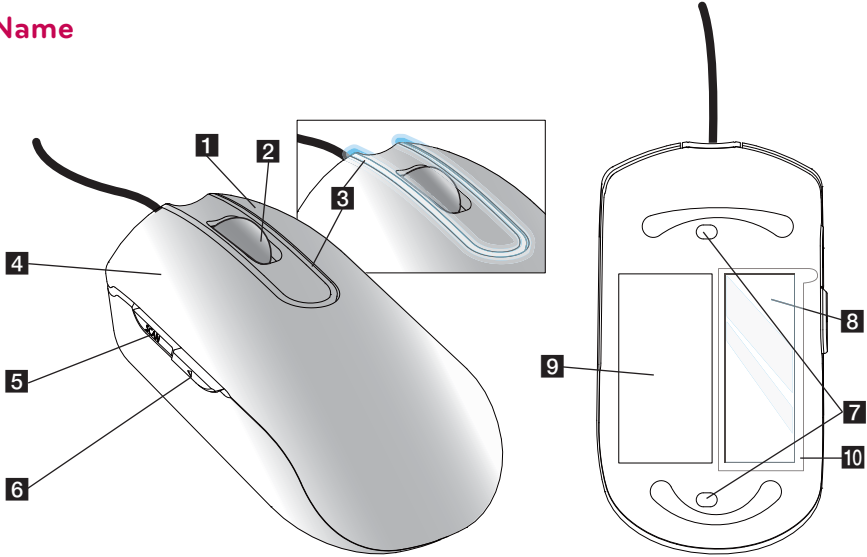
The mouse pad has a transparent surface, which may cause the mouse pointer to jitter from time to time. When you scan a document or photo by placing it in the pad, move the mouse slowly. If you place a colored or coated paper in the pad, this may produce vertical lines on the scanned image due to reflection of light.

Introduction

1

Before Using

Name



1 Right button

2 Wheel

3 Indicator
The blue LED blinks while scanning in progress.

4 Left button

5 Scan start/stop button

6 Back button

Allows you to go back while browsing the Internet or folders.

7 Laser Sensor

8 Scan Window

9 Label

10 Scan Window Film

There is film attached to the scan window, please remove it

Caution

- Touch the scan window with sharp objects or using the scanner on a rough surface may cause damage to the scan window. If the scan window is scratched, the quality of the scanned image may deteriorate.
- While on the move, always put the mouse scanner in the pouch to protect the scan window from scratch and shock.
- When removing fingerprints or dusts off the scan window, always use the soft composite fiber cloth provided.



Tip

Tiny particles or dust may fall inside while you use the product. This won't have a direct effect on scan performance

Installing the Mouse Scanner Program

System Requirements

	Recommended System	Minimum System
CPU	Intel® Core™ 2 Duo or AMD Athlon™ II processor	Intel® Core™ Duo 1.2 GHz or AMD Athlon™ 64 X2, 1.7 GHz
RAM	4 GB	1GB Free of Ram
External graphics card	512 MB AMD Radeon™ HD 4850 or 512 MB ATI FirePro™ V5700 or better	128 MB NVIDIA® GeForce® 8400 GS or 128 MB ATI Radeon™ X1300
Built-in graphics card	–	384 MB (shared) Intel® GMA X3000 or better
OpenGL version	2.0 or later	1.5 or later
Free space	4 GB	1 GB
Operating system	Window 7	Window XP, Service pack 2 later
USB	USB 2.0	USB 2.0

Supported Operating Systems

- Windows XP (SP2) – 32 Bit
- Windows XP (SP3) – 32 Bit
- Windows Vista – 32 Bit and 64 Bit
- Windows 7 – 32 Bit and 64 Bit

The minimum system requirements are subject to change.

Caution

- Connect the mouse scanner to your computer, then install the software program.
- Log in with the administrator account to install the software program. Do not change the user while installing it.
- Before upgrading your Windows OS, please uninstall the Scanner software. Reinstall the Scanner software after Windows OS upgrade is complete. (example, XP ↔ Vista ↔ 7)
- While installing the driver for the Mouse scanner, do not remove it from the USB port.

How to Install

Please read the owner's manual before installing the Smart Scan installer program.

When you insert the CD you will see 3 icons which are installation of the program, Manual link and ad movie clip. We recommend to read the manual before installation.

1. Connect the mouse scanner to the USB port. Wait until the installation of the driver is complete. Do not remove the mouse scanner during the installation. If you removed the mouse scanner, connect it to another port or open the control panel and update the driver.

2. When you insert the CD you will find out the install program. Click the **Install** button to display the initial installation screen.

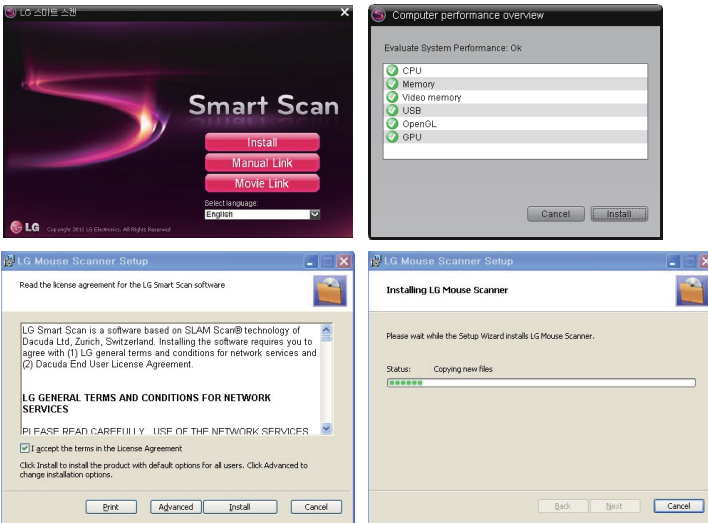
If you want to check the manual or movie to understand of product. You also can click two icons.

Check the compatibility with your computer, then click **Install**.

If user computer is available all the list will be green which is recommended spec. If your system close to low spec of computer will be yellow box. If user system is lower than low spec of computer will be red box.

3. The end user license agreement screen will appear. Read the end user license agreement carefully. If you agree with the agreement, check **Yes**, then click the **Install** button.

4. This will initiate the installation. When the **Next** button is enabled, click the button.



5. Once the installation is complete, the wizard's Finish screen appears.

6. Click the **OK** button to finish the installation and start the program. (We recommend you to select the "Start now" check box.)



Tip

If your computer system is closer to the minimum system requirements, the scanner can scan an A4 size document. If it is closer to the recommended system requirements, the scanner can scan an A3 size document. If you lower the resolution, this will increase the scanned area in the same system.

Using the Mouse Scanner Program



3

Using the Product

Optical character recognition (OCR): A feature used to recognize the text from the scanned image, which allows you to edit or modify the text.

Supported application: Microsoft Office (e.g., Word, Excel, and Outlook), Internet browser, e-mail applications such as Outlook.

! Caution

- To use the OCR function, scan a document or photo in high-resolution.
Go to **Settings > General** to check the resolution.
The OCR function supports Over the sizes of 10 font in high resolution.
- If it fails to recognize the text, check whether the language you selected is valid.
Go to **Settings > Text Recognition** and check the language set in the right pane.
The OCR function restarts whenever the language is changed or the text recognition range is modified in edit mode.
When using the OCR, make sure that the resolution is set to high in Settings -> General

1. S logo (System Menu): Includes Manage extensions, Check for updates, Send feedback, Help and About.
Manage extensions: Manage application programs such as Flickr, Twitter and Facebook to add convenience to the scan software.

! Tip

If you do not have an account for these applications, you can create it on the their website and then request for permission.

Check for updates: Check the update status.

Send feedback: Send comments if a problem occurs while using the software.

Help: View the owner's manual.

About: Check the program information.

2. Paste Image: Paste the scanned image to a compatible program.
3. Paste Text: Paste the optically recognized text to a compatible program.
4. Share: Upload the scanned image to Flickr, Twitter, Facebook, or attach the image to an e-mail message.

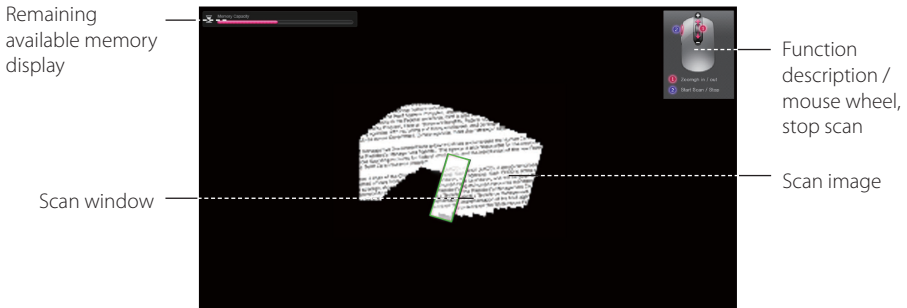


Caution

When using this option for the first time, you need to get the permission in order to synchronize with your account. (See the "How to Add Your Social Networking Accounts" section.)

5. Save: Save the scanned image as an image file (png, jpg, tif, bmp) or a text file (pdf, xls, doc) to the desired location.
6. Print: Activate the print dialog box and print using the designated printer.
7. Edit: Adjust the color, brightness, saturation and contrast value; select, rotate and enlarge the image.
8. Settings: Modify the resolution, image size, UI language, OCR language, scan size, etc.
Resolution - High: 320 dpi, Middle: 200 dpi, Low: 100 dpi (can be modified in the Settings)
*The resolution may be lower than the maximum available options due to your computer specifications and/or user settings.
9. Document mark: This icon is enabled when the OCR function is activated and the text is recognized. You can drag and drop the icon similarly to the text pasting function to copy the text to a compatible application, save as a Word file in a folder or attach to an e-mail message.
10. Preview window: Once the scan is complete and the editing is finished, press **OK** to display the preview of the selected image. You can drag and drop to copy the image to a compatible application, save as a .jpg file in a folder or attach to an e-mail message as a .jpg file.

Using the Scanner



1. Place the mouse scanner on the desired document or photo, then press the Scan button on the side.
2. Once the scan starts, the screen turns black and the image where the mouse is positioned is displayed.
3. Move the mouse scanner to scan the desired area of the document. A green scan window indicates that you can scan faster than the current movement rate.
4. If the scan window turns to yellow or red during scanning, you may be moving your mouse scanner too fast. Try to slow it down.

Yellow: The mouse scanner is moving too fast.

Red: Slow down immediately.

If you move the mouse scanner too fast, some areas may not be scanned and result in empty spots. Go back to the empty spots and move the mouse scanner slowly to re-scan the areas.

5. If the scanned image appears distorted or broken, stop moving the mouse scanner briefly. The image will be calibrated automatically. If the image still appears distorted or broken, re-scan the corresponding area to calibrate the image manually.
6. If you scan a large image, the image will be automatically reduced. If you need to check whether it is scanned properly, roll the mouse wheel up/down to zoom in/out the image.
7. When scanning is complete, press the scan button to stop scanning and open the edit window. (If the remaining available memory bar reaches the end, the scan will stop automatically.)



Tip

- Pause: If the mouse is placed away from a document or photo, the scanning will pause. To resume scanning, place the mouse scanner where the scanning is paused and move it left/right/up/down.
- Avoid pausing the scan for a prolonged time as it may cause damage to the LED.
- To cancel the pause, press the scan button once.
- The pause function do not recommend to hold over 5 seconds.
- If you pause scanning in a blank area with no text or image, the scanner is not able to resume the operation and stops scanning and returns to the edit mode.

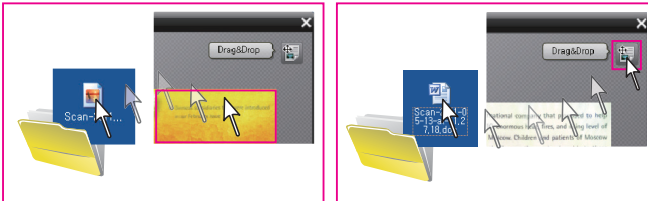
! Caution

- Make sure to fix a document or photo so that it does not move while scanning.
- If the document or photo moves with the mouse scanner, the scanner may be unable to calibrate the image.
- The mouse pointer will not work on a glass. Put a sheet of paper on top of the glass surface.
- Scanning the following documents may damage the documents or produce unwanted results.
- Wrinkled or creased documents, curled documents, torn documents, documents with paper clips or staples, carbon paper, coated paper, extremely thin and translucent paper, paper with adhesive notes or flags attached, coated photos, overhead transparencies, papers that are stuck together, paper with wet substances such as glue or correction fluid, table of contents of the books, which consist of lines only, corner or edge of the books, thick books and same pattern of the images.
- Please do not write or Read data of the storage devices at the same time while you scan such as USB, External HDD etc.
- If the program which make burden graphic card such as game run, the scan function may not available to use at the same time.
- Please quit the scan software before running games, etc.
- Please do not click or typing of other Input device while it do scanning.

Exclusive Features of the Mouse Scanner

Drag & Drop feature:

Allows you to drag and drop a scanned image from the Get text mark or main window to the desired application or folder. Drag and drop the image to a folder or attach it to an e-mail message as a .jpg file. You can also drag and drop the document icon to copy the OCR'd text to a supported application, save it in a folder or attach it to an e-mail message as a Word file.



Windows XP does not support to drag and drop a file on the desktop. In this case, open a folder to save the file. If you scan a document containing both an image and text, the image will not be inserted due to the characteristics of Excel.

A3 Scan feature: Allows you to maximize the scan size by lowering the resolution and scan a document up to A3 size in low resolution. (This feature is only supported on the computer that meets the recommended system requirements.)

Optical character recognition (OCR): A feature used to recognize the text from the scanned image, and allow you to edit or modify the text.

Supported application: Microsoft Office (e.g., Word, Excel, and Outlook), Internet browser, e-mail applications such as Outlook.

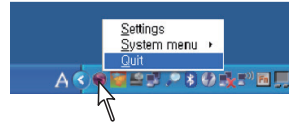
! Caution

- The Drag and Drop feature limits the quality of the image. Make sure to switch to the maximum scan size after using it. (This feature will produce different output size for the same image depending on the resolution.)
- Selecting multiple OCR languages will increase the time required for the OCR process. Select only the necessary languages prior to scanning.
- In Outlook Express, you can drag and drop attachment files (.jpg, Word) only.
- The table support with save function on excel
- If there are multi languages with paragraph at the same page, it is better performance OCR to separate the blocks with Edit mode.



Tip

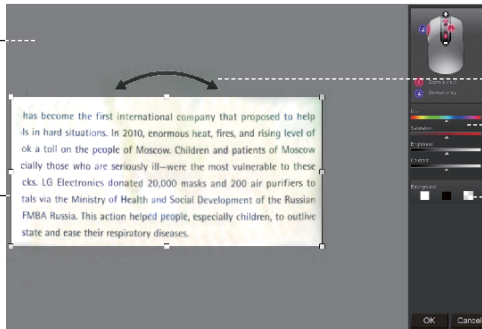
- How to quit the software.
 - If you want to quit the software please go to tray which is bottom and right side of Window O/S. Then move the cursor on the icon and click the right button of the mouse. You will find out the quit button on it. Please press quit button to quit the software.



Edit

Adjust the background

Scanned image



Rotate

Adjust the color

Adjust the background

1. When scanning is complete, the scanned image is automatically cut into a rectangular shape and aligned perpendicular to the background.
2. If the image is not perpendicular to the background, rotate it manually with the arrow above the rectangular box. (When scanning a partial area, the image may not be perpendicular to the background.) In this case, the OCR function may not work properly. Make sure to align the image vertically prior to proceeding.)
3. If you wish to select a partial area of the scanned image, press and hold the mouse scanner's left button, drag through the desired area, then release the button to select it. You can also rotate the selected area by pressing the mouse scanner's left button.
4. To adjust the color, brightness, etc. of the image, use the color, saturation, brightness and contrast controls located at the right of the window.
5. Other areas except for the scanned image will be shown in black and white checkered pattern.
6. To check whether a large image is scanned properly, roll the mouse wheel up/down to zoom in/out the area where the mouse cursor is located.
7. Pressing the scan button restarts the scanner. Be careful not to press the scan button unless you wish to scan the document again.

OK: Confirms your selection and initiates the OCR function.

Cancel: De-selects your selection. The entire scanned image will be displayed in the preview window, and the OCR function is disabled.

Paste Image / Paste Text / Share



1. Using the Paste Image / Paste Text features
To paste an image or text after scanning is complete, start the compatible application you want. Then, press Paste Image or Paste Text to copy and paste the scanned image/text to the compatible application.
2. Using the Share feature
If you press the Share button, four options are displayed. If you use this function for the first time, you are asked to authenticate your account as described later in this document. Once the authentication is complete, you can use these services with your account.

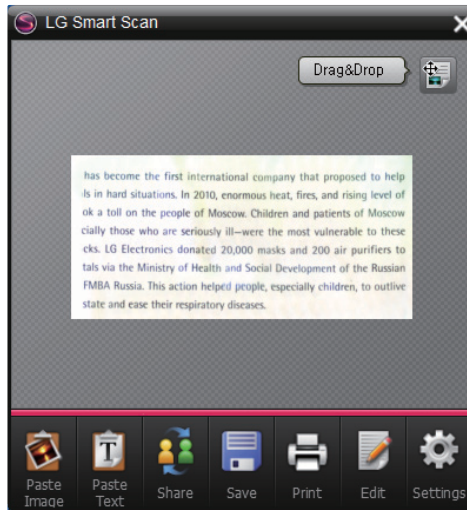
⚠ Caution

Do not open multiple applications.

💡 Tip

- Using the e-mail: Click the **Mail** icon to attach an image as a .jpg file to the added e-mail application.
- Click the **Flickr**, **Twitter** or **Facebook** icon to share your images on the web. In the upload window, enter the name of the image and click the **Post** button. (For more information, see the “How to Add Your Social Networking Accounts” section.) Once uploading is complete, the **View posted image on...** window appears. To check whether the upload is successful, click **Show post on...** to see the uploaded image on the application.

Save / Print / Edit / Settings



4. Save (click to insert the image)

Click the **Save** icon to open the folder to save the scanned image/text. Select the desired location, set the desired file format at the bottom of the window, then click the **Save** button.

Image file: png, jpg, tiff, bmp

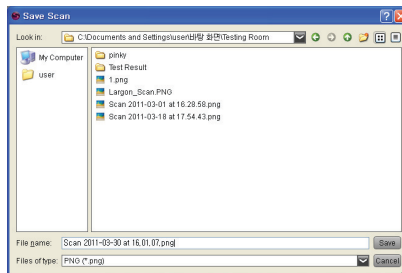
Document file: pdf, xls, doc

To save to a new folder, click the mouse scanner's right button and select **New**, or click the **New** icon at the top of the window to create a new folder. Rename the new folder and click to save it.

- If you scan a document containing both an image and text, the image will not be inserted due to the characteristics of Excel.

- If the document contains a table, Excel and Word will automatically recognize the table and you will be able to edit it within the application.

- If the document contains a specific font, The application will automatically recognize the font and apply it to the document file.

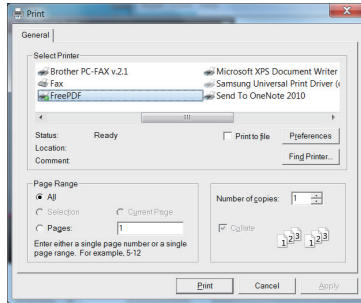


Tip

Before finishing the drag and drop pop up which will be located right and top of preview window the file format(xls, pdf, doc) save does not support.

5. Print

Click the **Print** icon to open the print dialog box of the operating system. Select the desired printer, then click the **Print** button.



6. Edit

If the edited image is not what you wanted, you can double-click the **Edit** icon or the preview window to edit again with the functions described above.

7. Settings

1) General:

General options

User interface language

Scan resolution: 320dpi, Middle : 200 dpi, Low : 100 dpi (can be modified in the Settings)

*The resolution may be lower than the maximum available options due to your computer specifications and/or user settings.

Window behavior

Always on top: Yes (show the application in the foreground), No (show the application in the background)

Window position: Right (default), left and remember last position

A3 Support on recommended computer system (It maybe different regarding with user's computer system.)

2) Save: Save options

Default file name prefix: The default file name that is inserted at the beginning of the image file (configurable).

JPEG Quality: JPEG compression ratio in three levels: high, medium and low. The compression ratio depends on the resolution.

3) Updates: Software updates check

Automatic update or manual update. For automatic update, you can set the update

check interval to **Daily**, **Weekly** or **Monthly**. For manual update, pressing the **Check for updates** button at the bottom of the window will have the same function as pressing the Check for updates button in the system menu.



Caution

- Close the software (right-click the icon in the notification area to do so) prior to performing the update.
- Make sure that the mouse is connected during the update.
- Once the update is complete, remove the mouse from the USB port, then reconnect it after 5 seconds. The mouse should function properly.

4) Text recognition : Languages for OCR can be selected in the options menu.

Filter : Languages can be filtered by "selected" languages and "available" languages.

Search : Languages can be found quickly using the search tab underneath the Filter option.

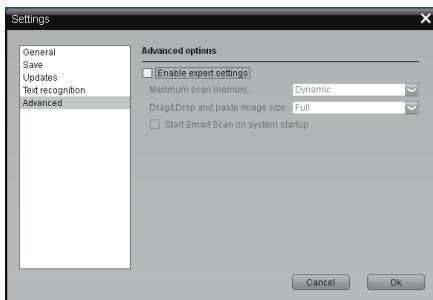
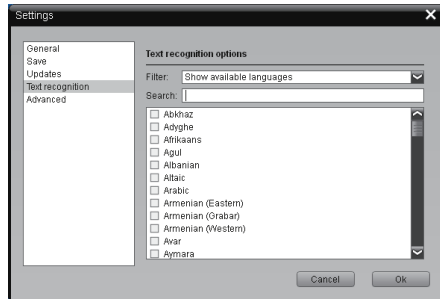
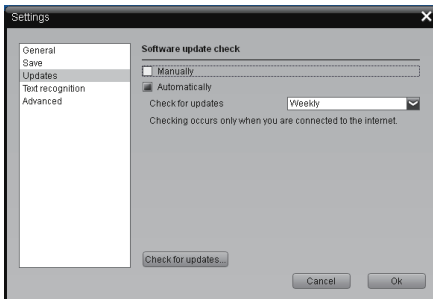
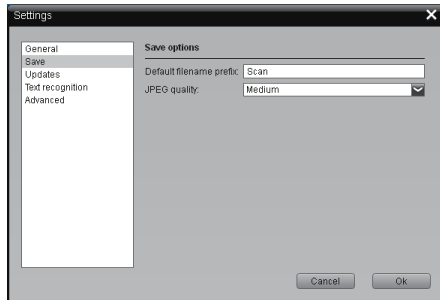
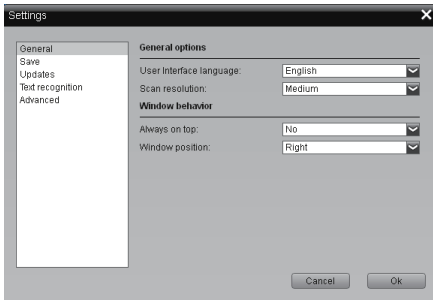
5) Advanced: Advanced options

- Modifying the advanced options are generally not suggested as it may affect the system's performance.

Maximum scan memory: You can increase or decrease the memory previously set according to the current system. Increasing the memory will result to a higher available memory, thus a larger scan area. The maximum value corresponds to the maximum capacity of the memory available in the system. (The value may differ depending on the system.)

The default value is Dynamic which is define with own's computer condition automatically.

Drag & Drop and paste image size: The default is Full size. Adjusting this value can help adjust the size of the image, but is not suggested as it will also affect the quality of the image. This button enables or disables the automatic start of the application when the computer is powered on. If you do not want the application to start automatically during the system startup, clear the check box. (Automatic start is suggested to ensure automatic update.)



System Menu (S-logo)



1. Manage extensions: Manage application programs to add convenience to the scan software. You can view, add, or remove the settings for your e-mail, Facebook, Flickr and Twitter.



Tip

If you want to sign out Twitter, Facebook or Flickr and use another application, click the desired application to display the **Settings** button at the bottom right of the window. Click the **Settings** button to log out from the account.

2. Check for updates: If you wish to update manually, click Update to check the current version and whether there are available updates. When you click update you will see that checking update. If there are no update it will mention that does not need to update. If there are update you can update with clicking the update icon to newest version.
3. Send feedback: You can send comments any time you encounter a problem while using the software and/or hardware.
4. Help: If you need assistance for the product and/or the software, click Help to open the detailed owner's manual.
5. About: Shows the information on the software version, license and open source code.

How to Add Your Social Networking Accounts

To use Facebook, Twitter and Flickr with the product for the first time, you are asked to authenticate your social networking account. (The authentication needs to be done only once. Next time you access the social networking service, a scanned image will be automatically uploaded to the added account.)

1. Authenticating your Twitter, Flickr or Facebook account

1) If you press the Twitter, Flickr or Facebook icon for the first time, the application will request your account information as illustrated below. Enter your information, select the **Keep me logged in** check box, then click Login.



Caution

If you are using a shared computer, do not select this check box for blocking private information. (Acudad is an application that automatically uploads a scanned image to the added account.)

2) When the authentication window appears, click **Connect**.

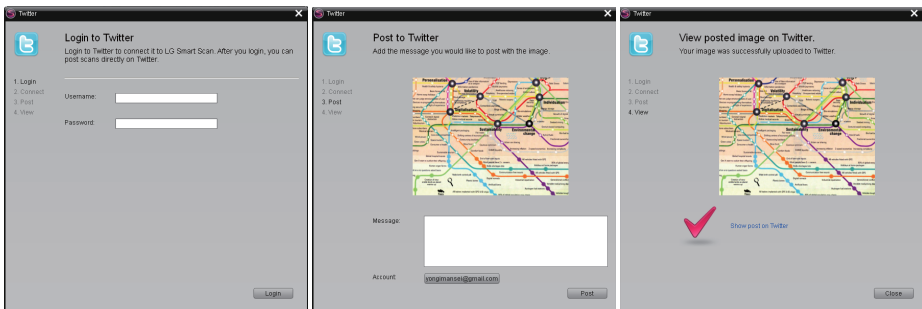
Flickr will ask again to allow to connect with Acudad. Please confirm to authorization to allow to connect the account.

3) When uploading scanned images to SNS you will be prompted to a preview screen.

In this preview screen you will be able to add any caption you would like to before posting your image. Titles are not automatically assigned to the images that will be posted.

4) When the image is successfully uploaded to your account, a message notifying that the image upload is successful will be displayed.

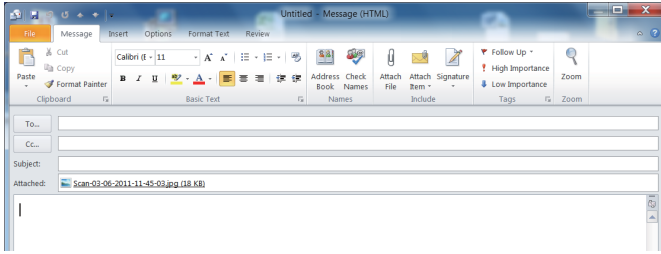
5) To check whether the image is uploaded to your account successfully, click **View** to see the uploaded image. When you upload the image on the photo album the image may not be uploaded. If so, please click the back to the my photo album which is located top and left side and then allow the authorization to upload.



Tip

- If you want to change the account of the service system menu(s)-logo -> Manage extensions -> Click the service what you want to change -> click the setting -> log out. Then you will update new account what you want.

2. Using the e-mail



Click **Mail** to attach an image as a .jpg file to the e-mail message that you wish to send.



Tip

You can select one of the e-mail applications available in your system. Outlook is selected by default.

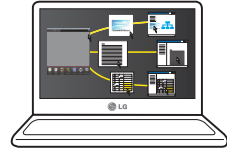
How to use the Mouse Scanner It's easy as 1-2-3



1. Click the scan button once to start scanning with Smart Scan

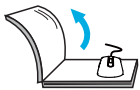


2. Simply wipe over the paper to scan what you need



3. Drag and drop the result to any application as editable text, table or image

How to scan the book



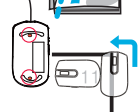
1) Lift-off left side to make right side as flat as possible



2) Start at the inner part and move down



3) Scan in smooth waves starting from bottom to top



4) To scan the corner of the book, you should rotate the mouse to scan.
(Tip, If the mouse 2 sensors of the bottom move out of the book the scan move to pause or stop.)

Product Specifications

Mouse Spec	
Sensor	Laser Sensor / 1200 dpi
Button	3 button + 2 button (scan & backward)

Scanner Spec	
Resolution (Maximum)	High : 320dpi, Middle : 200 dpi, Low : 100 dpi (can be modified in the Settings) *The resolution may be lower than the maximum available options due to your computer specifications and/or user settings.
Scan Size	A3 Support on recommended computer system (It maybe different regarding with user's computer system.)
Pixel Size	640 x 300 pixels @ 30Hz

Function	
Main menu	Paste, Share, Save, Print, Edit
Edit	Contrast Control / Brightness Control / Zoom in and out / Resizable / Auto rotation
Save Format	JPEG / TIFF/ PNG / PDF / BMP / Word / Excel available
Share	Flicker / Facebook / Twitter / Connectable to E-mail service
Application Program	M/S Office, Adobe Photoshop and so on
OCR	Supported

System Requirement	
Interface	USB Port
Operating System	Window XP/Vista/7
Minimum System	CPU : Intel® Core™ Duo 1.2 GHz or AMD Athlon™ 64X2, 1.7 GHz RAM : 1GB of free RAM Video Card : 128 MB NVIDIA® GeForce® 8400 GS or 128 MB ATI Radeon™ X1300 or 384 MB (shared) Intel® GMA X3000 or better Free disk space : 1 GB
Recommended System	CPU : Intel® Core™ 2 Duo or AMD Athlon™ II processor RAM : 4GB Video card : 512 MB AMD Radeon™ HD 4850 or 512 MB ATI FirePro™ V5700 or better Free disk space : 4GB

- Design and regulation of the product may be changed without prior notice



Free Manuals Download Website

<http://myh66.com>

<http://usermanuals.us>

<http://www.somanuals.com>

<http://www.4manuals.cc>

<http://www.manual-lib.com>

<http://www.404manual.com>

<http://www.luxmanual.com>

<http://aubethermostatmanual.com>

Golf course search by state

<http://golfingnear.com>

Email search by domain

<http://emailbydomain.com>

Auto manuals search

<http://auto.somanuals.com>

TV manuals search

<http://tv.somanuals.com>