

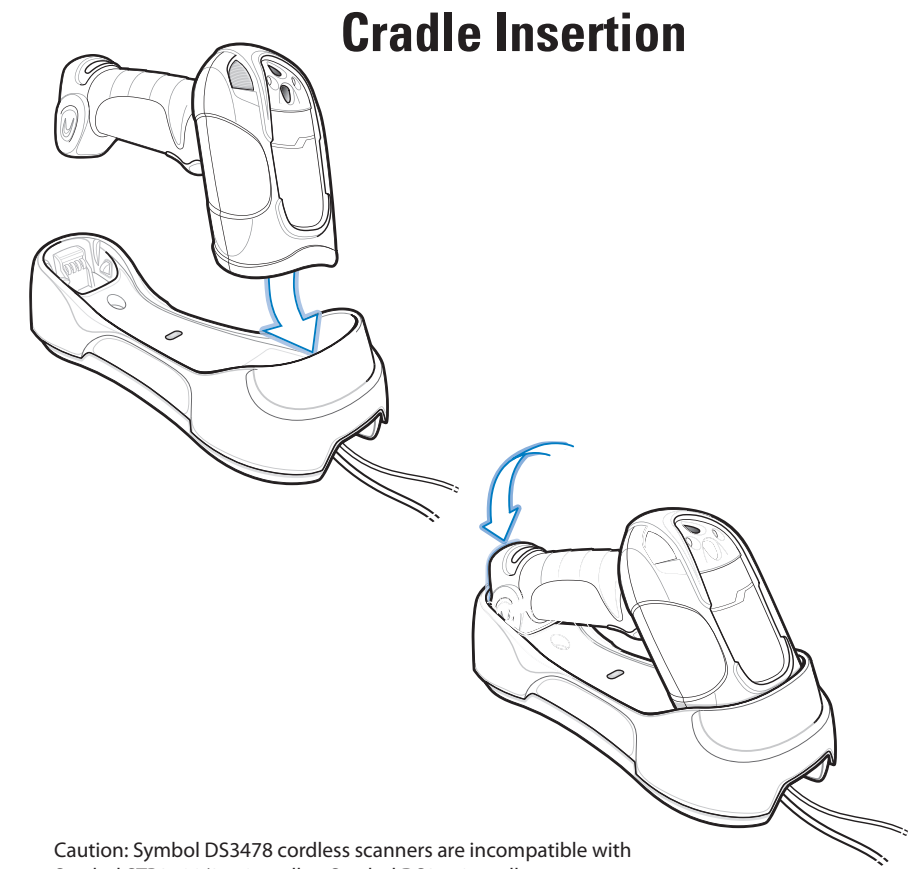
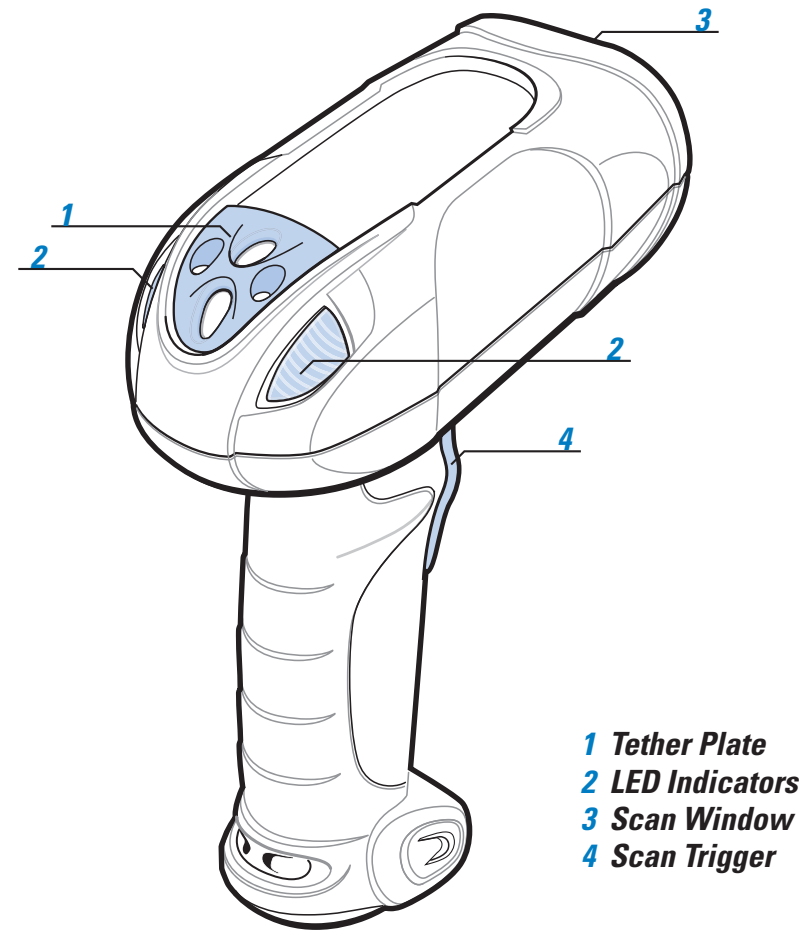
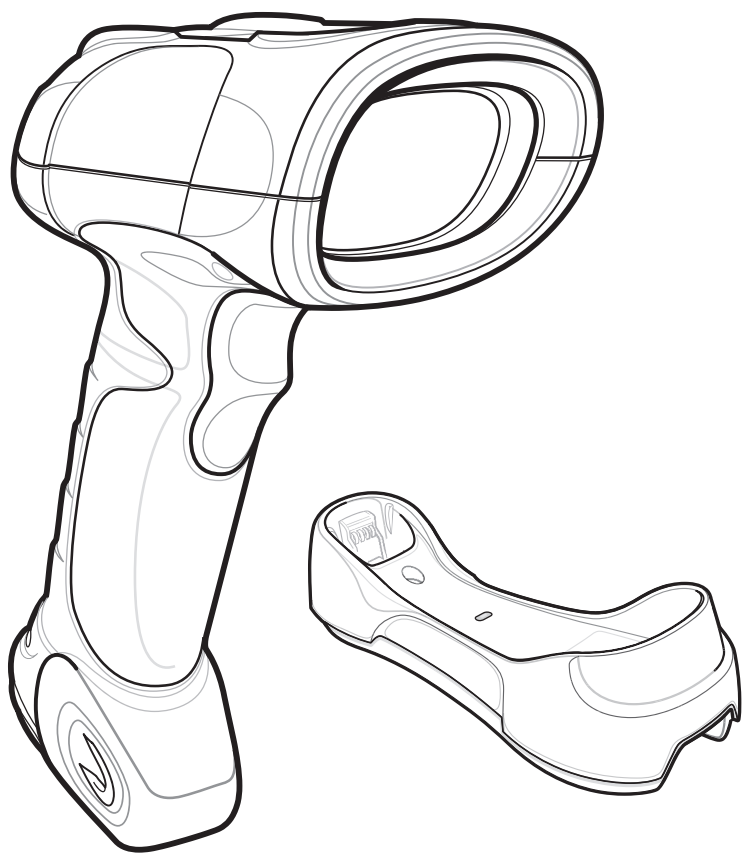
# SYMBOL DS3578

## Quick Start Guide



See Product Reference Guide for more information

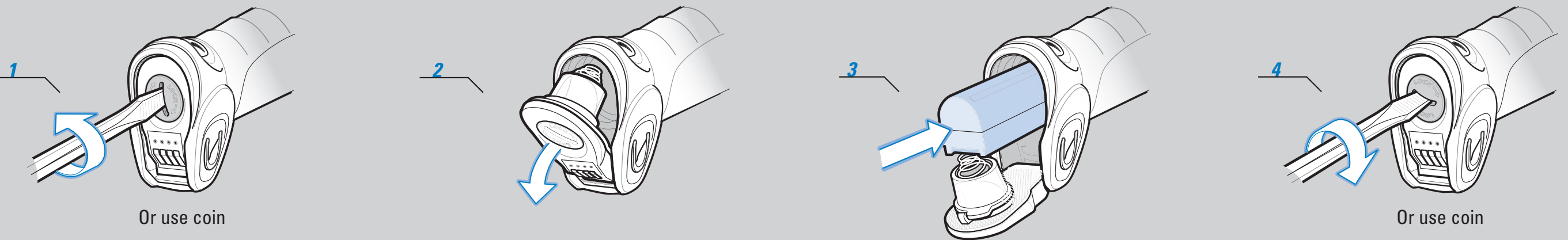
POST IN WORK AREA



### Cradle Insertion

Caution: Symbol DS3478 cordless scanners are incompatible with Symbol STB3508/3578 cradles. Symbol DS3578 cordless scanners are incompatible with Symbol STB3408/3478 cradles.

## BATTERY INSERTION/REMOVAL



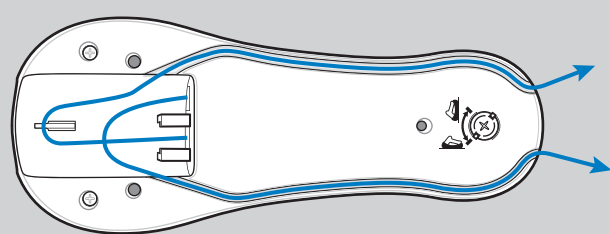
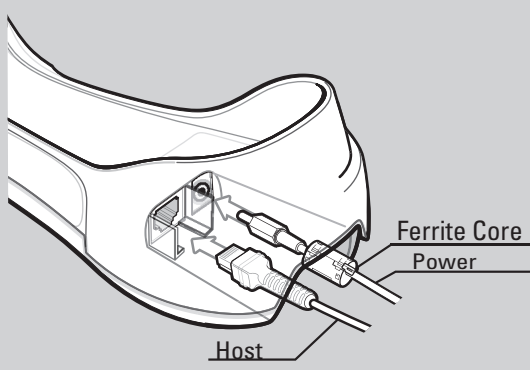
Or use coin

Or use coin

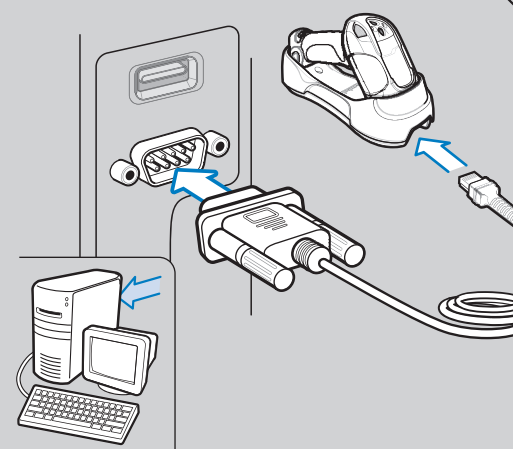
## HOST INTERFACES

NOTE: Cables may vary depending on configuration. When using an external power supply, place the ferrite core on the power cable, insert the power supply cable into the cradle, then insert the host cable. Connect AC power last.

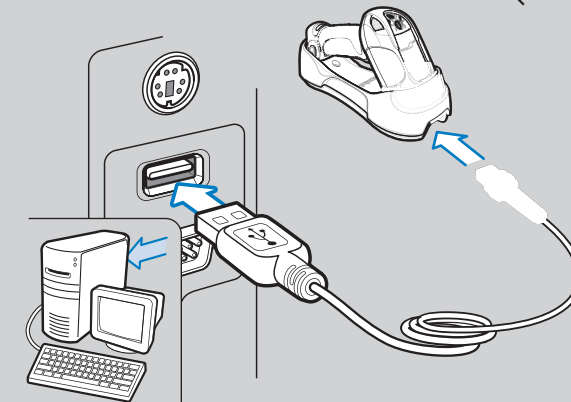
### Cable Connection at Cradle



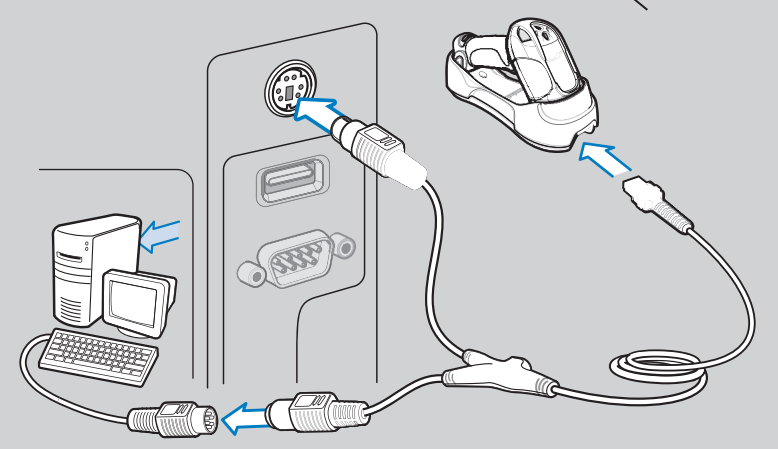
### RS-232



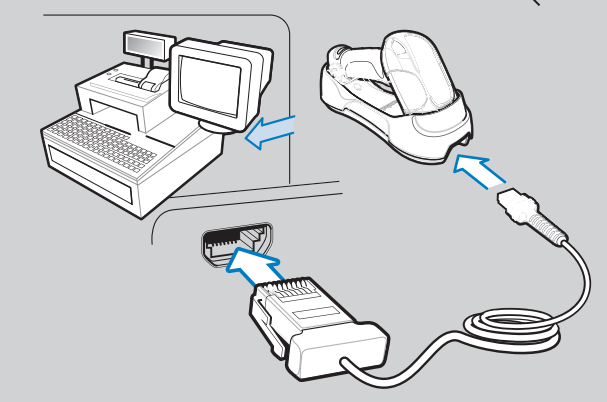
### USB



### Keyboard Wedge



### IBM 46XX



## TROUBLESHOOTING

Please refer to the Symbol DS3578 Product Reference Guide Troubleshooting section for further information.

### Scanner not working

- No power to scanner: Check battery
- End cap not secured correctly: Turn end cap to secure

### Scanner not decoding bar code

- Scanner not programmed for bar code type: Ensure scanner is programmed to read type of bar code being scanned
- Bar code unreadable: Ensure bar code is not defaced; try scanning test bar code of same bar code type

### Scanner decoding bar code, but data not transmitting to host

- Scanner not paired to host-connected cradle: Pair the scanner to the cradle (using the PAIR bar code on the cradle)
- Cradle not programmed for correct host interface: Check scanner host parameters or edit options
- Interface cable is loose: Check for loose cable connections

### Scanned data incorrectly displayed on host

- Paired cradle host communication parameters do not match the host's parameters: Check cradle host parameters or edit options

If data is still not transmitting to host, it may be necessary to recycle power on the cradle.

## SYMBOL DS3578 PROGRAMMING BAR CODES

### Set Defaults

Note: The scanner connection to the cradle is dissolved when Set Defaults is scanned.



SET DEFAULTS

### Unpairing/Disconnection



UNPAIR/DISCONNECT

### USB Host Types



HID KEYBOARD EMULATION



IBM HAND-HELD USB

### IBM 46XX Host Types



PORT 5B



PORT 9B

### Keyboard Wedge Host Types



IBM PC/AT and IBM PC COMPATIBLE

### Carriage Return/Line Feed



SCAN OPTIONS



<DATA><SUFFIX>



ENTER

### Radio Communications Host Types



CRADLE HOST



SERIAL PORT PROFILE (SLAVE)



BLUETOOTH KEYBOARD EMULATION (HID SLAVE)



SERIAL PORT PROFILE (MASTER)

### RS-232 Host Types



STANDARD RS-232



NIXDORF RS-232 MODE B



NIXDORF RS-232 MODE A



ICL RS-232



FUJITSU RS-232

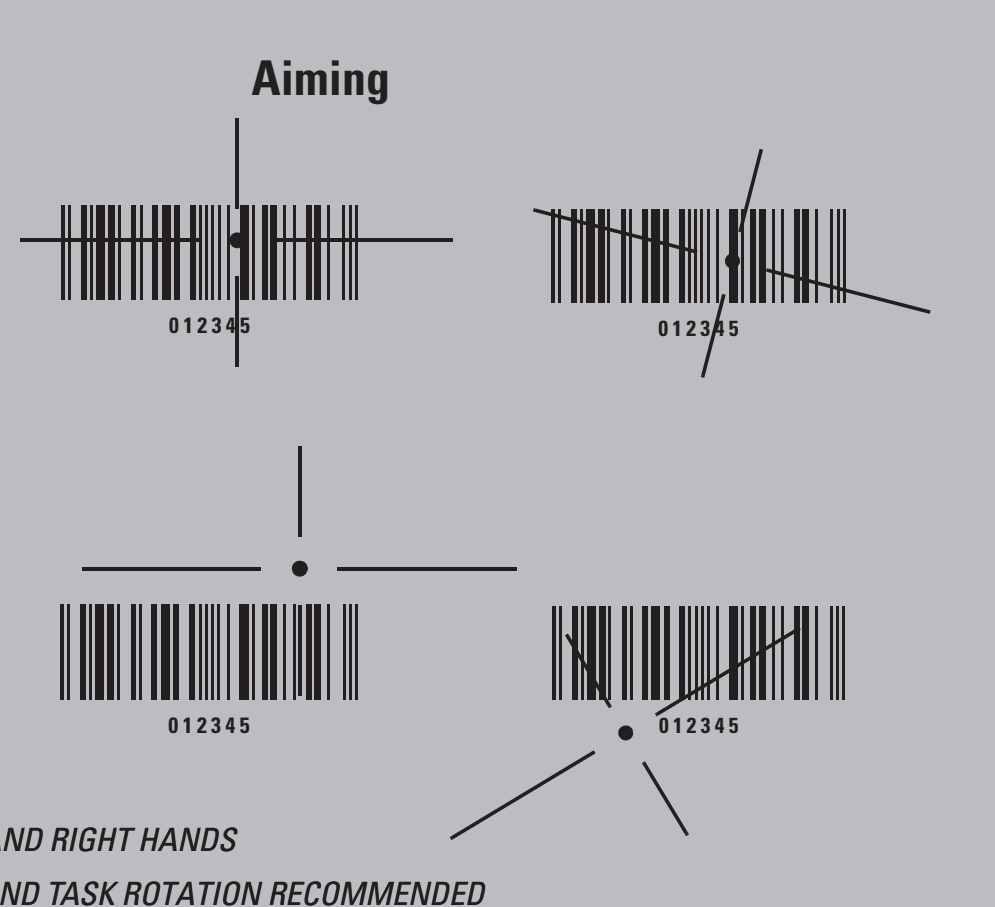
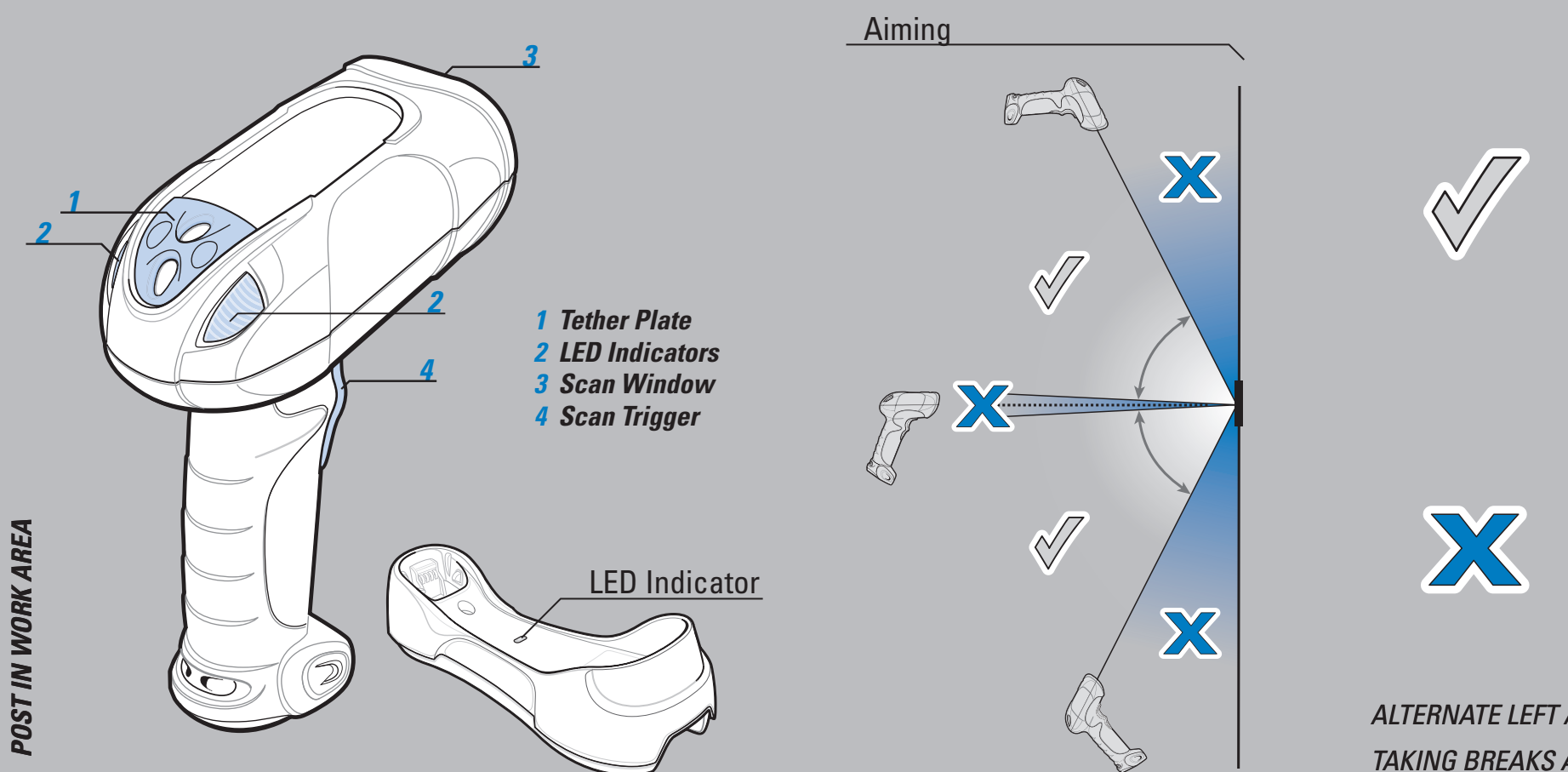


OPOS/JPOS

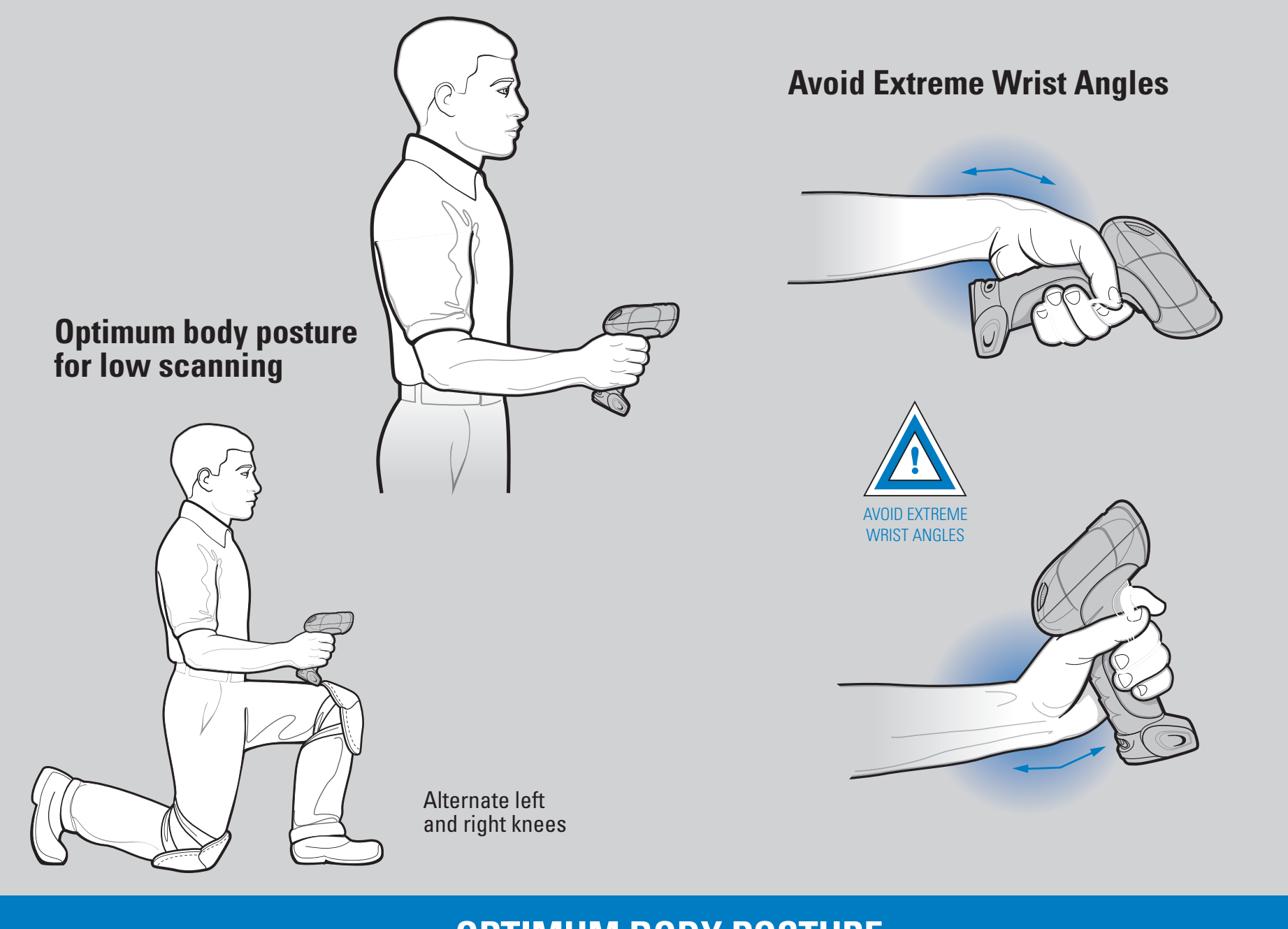
# SYMBOL DS3578

## Quick Start Guide

# OPTIMUM SCANNING POSITIONS



# OPTIMUM UPRIGHT BODY POSTURE



# Beeper Indications

Low-medium-high beeps	Normal beep	4 long low beeps	4 short high beeps
Power up	Bar code decoded (if decode beeper enabled)	Transmission error detected; data is ignored	Low battery indication
Short low-high beeps	Scanner has paired with the cradle	Scanner has unpaired with the cradle	Long low-high beeps or Long low-high-low-high beeps
			Unsuccessful pairing attempt

# Parameter Menu Scanning

High-low-high-low beeps	Long low-high beeps
Successful program exit with change in the parameter setting	Input error, incorrect programming sequence, or Cancel bar code scanned

# LED Indications

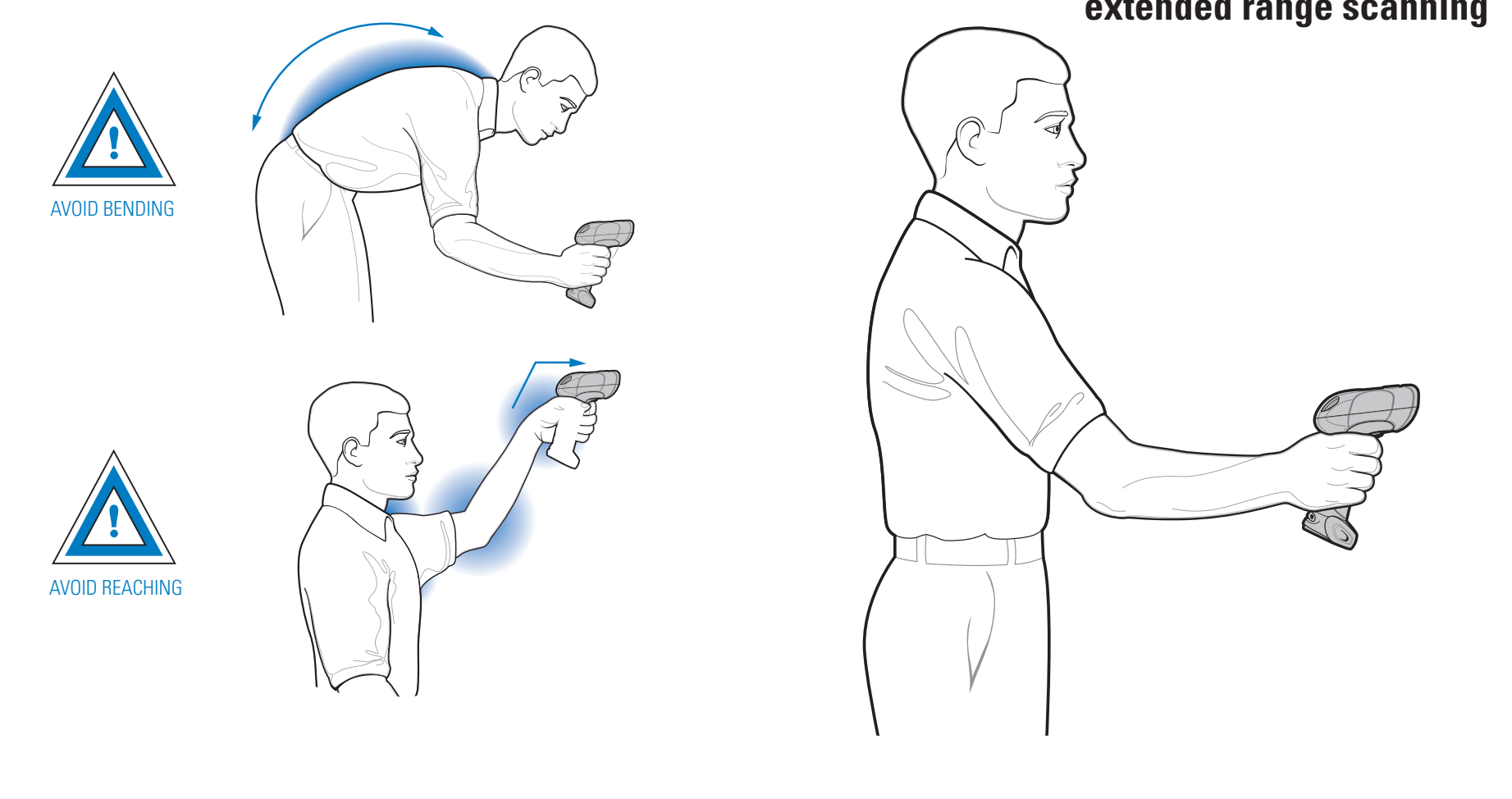
Off	Green	Red
No power applied to scanner (battery discharged or removed), or scanner is in low power and ready to scan	Bar code successfully decoded	Data transmission error or scanner malfunction or Symbol DS3578 scanner inserted into an STB3478 cradle

# Charging Use

Green Slow Flash	Green Fast Flash	Red Flash	Red and Green Flash
Scanner charging at a slow rate (used when cradle is powered by host cable)	Scanner charging at a fast rate (used when cradles powered from external power supply)	Charging problem. See Product Reference Guide for more information	Temperature fault

# OPTIMUM BODY POSTURE

# Optimum body posture for extended range scanning



**© MOTOROLA, INC. 2010 All rights reserved.**  
 Motorola reserves the right to make changes to any product to improve reliability, function, or design. Motorola does not assume any product liability arising out of, or in connection with, the application or use of any product, circuit, or application described herein.  
 No license is granted, either expressly or by implication, estoppel, or otherwise under any patent right or patent, covering or relating to any combination, system, apparatus, machine, material, method, or process in which Motorola products might be used. An implied license exists only for equipment, circuits, and subsystems contained in Motorola products.  
 MOTOROLA, the Stylized M Logo and Symbol and the Symbol logo are registered trademarks of Motorola, Inc. Other product names mentioned in this manual may be trademarks or registered trademarks of their respective companies and are hereby acknowledged.  
 Motorola, Inc.  
 One Motorola Plaza  
 Holtsville, N.Y. 11742-1300  
 www.motorola.com/enterprisemobility

**Warranty**  
 For the complete Motorola hardware product warranty statement, go to: <http://www.motorola.com/enterprisemobility/warranty>.

**Patents**  
 This product is covered by one or more patents. For patent information go to: <http://www.motorola.com/enterprisemobility/patents>.

**Ergonomic Recommendations**  
**Caution:** In order to avoid or minimize the potential risk of ergonomic injury follow the recommendations below. Consult with your local Health & Safety Manager to ensure that you are adhering to your company's safety programs to prevent employee injury.

- Reduce or eliminate repetitive motion
- Maintain a natural/neutral position
- Reduce or eliminate excessive force
- Keep objects that are used frequently within easy reach
- Perform tasks at correct heights
- Reduce or eliminate vibration
- Reduce or eliminate direct pressure
- Provide adjustable workstations
- Provide adequate clearance
- Provide a suitable working environment
- Improve work procedures

**Service Information**  
 If you have a problem using the equipment, contact your facility's Technical or Systems Support. If there is a problem with the equipment, they will contact the Motorola Enterprise Mobility Support at: <http://www.motorola.com/enterprisemobility/contactsupport>.  
 For the latest version of this guide go to: <http://www.motorola.com/enterprisemobility/manuals>.

# SYMBOL DS3578

# Recommended Usage Guide

# REGULATORY INFORMATION

**Regulatory Information**  
 This device is approved under the Symbol Technologies brand: Symbol Technologies, Inc. is the Enterprise Mobility business of Motorola, Inc. ("Motorola"). This guide applies to Model Number DS3578  
 All Motorola/Symbol devices are designed to be compliant with rules and regulations in locations they are sold and will be labeled as required. Local language translations are available at the following website: <http://www.motorola.com/enterprisemobility/manuals>. Any changes or modifications to Motorola/Symbol equipment, not expressly approved by Motorola/Symbol, could void the user's authority to operate the equipment.  
**CAUTION:** Only use Motorola/Symbol approved and UL Listed accessories, battery packs and battery chargers.

**Waste Electrical and Electronic Equipment (WEEE)**  
**English:** For EU Customers: All products at the end of their life must be returned to Motorola for recycling. For information on how to return product, please go to: <http://www.motorola.com/recycling/wEEE>.  
**Spanish:** Para clientes en E.U.: Todos los productos al final de su vida útil deben ser devueltos a Motorola para su reciclado. Para información sobre cómo devolver el producto, visite: <http://www.motorola.com/recycling/wEEE>.  
**Portuguese:** Para clientes em E.U.: Todos os produtos ao fim da vida útil devem ser devolvidos à Motorola para reciclagem. Para obter informações sobre como devolver o produto, visite: <http://www.motorola.com/recycling/wEEE>.  
**French:** Clients de l'Union Européenne: Tous les produits en fin de cycle de vie doivent être retournés à Motorola pour recyclage. Pour de plus amples informations sur le retour de produits, consultez: <http://www.motorola.com/recycling/wEEE>.  
**Italian:** per i clienti dell'UE: Tutti i prodotti che sono giunti al termine del rispettivo ciclo di vita devono essere restituiti a Motorola al fine di essere riciclati. Per informazioni sulla modalità di restituzione, visitate il seguente sito Web: <http://www.motorola.com/recycling/wEEE>.  
**Chinese:** ES 客户: 所有产品在生命周期结束时都必须返回 Motorola 进行回收。有关回收产品的更多信息，请访问: <http://www.motorola.com/recycling/wEEE>.  
**Japanese:** 本製品は、EU 諸国において、廃棄物の削減と資源の有効な利用を促進するために、EU 諸国に返却されるべきです。返却方法の詳細については、以下のウェブサイトをご覧ください: <http://www.motorola.com/recycling/wEEE>.  
**Korean:** EU 고객: 모든 제품은 수명 주기가 끝나면 반드시 EU 국가로 돌려보내야 합니다. EU 국가로 돌려보내야 하는 이유와 방법에 대한 자세한 정보는 다음 웹사이트를 방문하십시오: <http://www.motorola.com/recycling/wEEE>.  
**Polish:** Klienci z Unii Europejskiej: Wszystkie produkty po zakończeniu ich cyklu życia muszą być oddane do recyklingu. Aby uzyskać więcej informacji na temat oddania produktów do recyklingu, odwiedź stronę: <http://www.motorola.com/recycling/wEEE>.  
**Russian:** Для клиентов из ЕС: Все продукты в конце срока службы должны быть возвращены в Motorola для переработки. Для получения информации о том, как вернуть продукт, посетите сайт: <http://www.motorola.com/recycling/wEEE>.  
**Ukrainian:** Для клієнтів з ЄС: Всі продукти в кінці терміну служби повинні бути повернуті до Motorola для переробки. Для отримання інформації про те, як повернути продукт, відвідайте веб-сайт: <http://www.motorola.com/recycling/wEEE>.  
**Slovak:** Pre klientov z Európy: Všetky produkty po skončení životného cyklu musia byť vrátené do Motorola na recyklovanie. Pre informácie o tom, ako produkt vrátiť, navštívte stránku: <http://www.motorola.com/recycling/wEEE>.  
**Slovenian:** Za klijente v EU: Vsi izdelki na koncu svojega življenjskega cikle morajo biti vračeni v Motorola za recikliranje. Za informacije o načinu vračanja izdelka, obiščite: <http://www.motorola.com/recycling/wEEE>.  
**Swedish:** För kunder inom EU: Alla produkter som uppnått sin livslängd måste returneras till Motorola för återvinning. Information om hur du returnerar produkter finns på <http://www.motorola.com/recycling/wEEE>.  
**Turkish:** AB müşterileri için: Tüm ürünler ömrü tamamlandığında mutlaka geri dönüştürülmelidir. Motorolla'ya nasıl teslim edileceği, ürünleri nasıl teslim etmeniz gerektiği için lütfen şu adresi ziyaret edin: <http://www.motorola.com/recycling/wEEE>.  
**Ukrainian:** Для клієнтів з ЄС: Всі продукти в кінці терміну служби повинні бути повернуті до Motorola для переробки. Для отримання інформації про те, як повернути продукт, відвідайте веб-сайт: <http://www.motorola.com/recycling/wEEE>.  
**Polish:** Klienci z Unii Europejskiej: Wszystkie produkty po zakończeniu ich cyklu życia muszą być oddane do recyklingu. Aby uzyskać więcej informacji na temat oddania produktów do recyklingu, odwiedź stronę: <http://www.motorola.com/recycling/wEEE>.  
**Russian:** Для клиентов из ЕС: Все продукты в конце срока службы должны быть возвращены в Motorola для переработки. Для получения информации о том, как вернуть продукт, посетите сайт: <http://www.motorola.com/recycling/wEEE>.  
**Ukrainian:** Для клієнтів з ЄС: Всі продукти в кінці терміну служби повинні бути повернуті до Motorola для переробки. Для отримання інформації про те, як повернути продукт, відвідайте веб-сайт: <http://www.motorola.com/recycling/wEEE>.  
**Slovak:** Pre klientov z Európy: Všetky produkty po skončení životného cyklu musia byť vrátené do Motorola na recyklovanie. Pre informácie o tom, ako produkt vrátiť, navštívte stránku: <http://www.motorola.com/recycling/wEEE>.  
**Slovenian:** Za klijente v EU: Vsi izdelki na koncu svojega življenjskega cikle morajo biti vračeni v Motorola za recikliranje. Za informacije o načinu vračanja izdelka, obiščite: <http://www.motorola.com/recycling/wEEE>.  
**Swedish:** För kunder inom EU: Alla produkter som uppnått sin livslängd måste returneras till Motorola för återvinning. Information om hur du returnerar produkter finns på <http://www.motorola.com/recycling/wEEE>.  
**Turkish:** AB müşterileri için: Tüm ürünler ömrü tamamlandığında mutlaka geri dönüştürülmelidir. Motorolla'ya nasıl teslim edileceği, ürünleri nasıl teslim etmeniz gerektiği için lütfen şu adresi ziyaret edin: <http://www.motorola.com/recycling/wEEE>.

**RF Exposure Guidelines**  
**Safety Information**  
**Reducing RF Exposure – Use Properly**  
 Only operate the device in accordance with the instructions supplied.  
**International**  
 The device complies with internationally recognized standards covering human exposure to electromagnetic fields from radio devices. For information on "International" human exposure to electromagnetic fields refer to the Motorola/Symbol Declaration of Conformity (DoC) at <http://www2.symbol.com/doc/>.  
**EU - Handheld Devices**  
 To comply with EU RF exposure requirements, this device must be operated in the hand with a minimum separation distance of 20cm or more from a person's body. Other operating configurations should be avoided.  
**US and Canada - Handheld Devices**  
 To comply with FCC RF exposure requirements, this device must be operated in the hand with a minimum separation distance of 20 cm or more from a person's body. Other operating configurations should be avoided.  
**Power Supply**  
 Use only a Motorola/Symbol approved power supply output rated at 9Vdc and minimum 2A. The power supply shall be Listed to UL/CSA 60950-1; and certified to IEC60950-1 and EN60950-1 with SELV outputs. Use of alternative power supply will invalidate any approval given to this device and may be dangerous.

**Batteries**  
**Taiwan - Recycling**  
  
**「廢電池請回收」**  
**EPA (Environmental Protection Administration) requires dry battery producing or importing firms in accordance with Article 15 of the Waste Disposal Act are required to indicate the recycling marks on the batteries used in sales, giftwares or promotion. Contact a qualified Taiwanese recycler for proper battery disposal.**  
**Battery Information**  
 Motorola/Symbol rechargeable battery packs are designed and constructed to the highest standards within the industry. However, there are limitations to how long a battery can operate or be stored before needing replacement. Many factors affect the actual life cycle of a battery pack, such as heat, cold, harsh environmental conditions and severe drops.  
 When batteries are stored over six (6) months, some irreversible deterioration in overall battery quality may occur. Store batteries at half of full charge in a dry, cool place, removed from the equipment to prevent loss of capacity, rusting of metallic parts and electrolyte leakage. When storing batteries for one year or longer, the charge level should be verified at least once a year and charged to half of full charge.  
 Replace the battery when a significant loss of run time is detected.  
 Standard warranty period for all Symbol batteries is 12 months, regardless if the battery was purchased separately or included as part of the mobile computer or bar code scanner. For more information on Symbol batteries, please visit: <http://mysymbolcare.symbol.com/battery/batbasics1.html>.

**Battery Safety Guidelines**

- The area in which the units are charged should be clear of debris and combustible materials or chemicals. Particular care should be taken where the device is charged in a non-combustible environment.
- Follow battery usage, storage, and charging guidelines found in the user's guide.
- Improper battery use may result in a fire, explosion, or other hazard.
- To charge the mobile device battery, the battery and charger temperatures must be between +32 °F and +104 °F (0 °C and +40 °C)
- Do not use incompatible batteries and chargers. Use of an incompatible battery or charger may present a risk of fire, explosion, leakage, or other hazard. If you have any questions about the compatibility of a battery or a charger, contact Motorola Enterprise Mobility support.
- For devices that utilize a USB port as a charging source, the device shall only be connected to products that bear the USB-IF logo or have completed the USB-IF compliance program.
- Do not disassemble or open, crush, bend or deform, puncture, or shred.
- Severe impact from dropping any battery-operated device on a hard surface could cause the battery to overheat.
- Do not short circuit a battery or allow metallic or conductive objects to contact the battery terminals.
- Do not modify or remanufacture, attempt to insert foreign objects into the battery, immerse or expose to water or other liquids, or expose to fire, explosion, or other hazards.
- Do not leave or store the equipment in or near areas that might get very hot, such as in a parked vehicle or near a radiator or other heat source. Do not place battery into a microwave oven or dryer.
- Battery usage by children should be supervised.
- Please follow local regulations to promptly dispose of used re-chargeable batteries.
- Do not dispose of batteries in fire.
- Seek medical advice immediately if a battery has been swallowed.
- In the event of a battery leak, do not allow the liquid to come in contact with the skin or eyes. If contact has been made, wash the affected area with large amounts of water and seek medical advice.
- If you suspect damage to your equipment or battery, contact Motorola Enterprise Mobility support to arrange for inspection.

**Radio Frequency Interference Requirements - FCC**  
 Note: This equipment has been tested and found to comply with the limits for a Class B digital device, pursuant to Part 15 of the FCC rules. These limits are designed to provide reasonable protection against harmful interference in a residential installation. This equipment generates, uses and can radiate radio frequency energy and, if not installed and used in accordance with the instructions, may cause harmful interference to radio communications. However there is no guarantee that interference will not occur in a particular installation. If this equipment does cause harmful interference to radio or television reception, which can be determined by turning the equipment off and on, the user is encouraged to try to correct the interference by one or more of the following measures:

- Reorient or relocate the receiving antenna
- Increase the separation between the equipment and receiver
- Connect the equipment into an outlet on a circuit different from that to which the receiver is connected
- Consult the dealer or an experienced radio/TV technician for help

**Radio Transmitters (Part 15)**  
 This device complies with Part 15 of the FCC Rules. Operation is subject to the following two conditions: (1) this device may not cause harmful interference, and (2) this device must accept any interference received, including interference that may cause undesired operation.  
**Radio Frequency Interference Requirements – Canada**  
 This Class B digital apparatus complies with Canadian ICES-003.  
 Cet appareil numérique de la classe B est conforme à la norme NMB-003 du Canada.

**CE Marking and European Economic Area (EEA)**  
 Bluetooth® Wireless Technology for use through the EEA has the following restrictions:  
 • Maximum radiated transmit power of 100mW EIRP in the frequency range 2.400 - 2.4835 GHz  
 • France, outside usage is restricted to 10mW EIRP  
 • Italy requires a user license for outside usage.

**Statement of Compliance**  
 Motorola/Symbol hereby, declares that this device is in compliance with the essential requirements and other relevant provisions of Directives 1999/5/EC. Declaration of Conformities may be obtained from <http://www.motorola.com/enterprisemobility/doc/>.

**Japan (VCCI) - Voluntary Control Council for Interference**  
 この装置は、情報処理装置等電波障害自主規制協議会（V C C I）の基準に基づいたクラスB情報技術装置です。この装置は、家庭環境で使用することを目的としていますが、この装置がラジオやテレビジョン受信機に近接して使用されると、受信障害を引き起こすことがあります。取扱説明書に従って正しい取り扱いをして下さい。  
 This is a Class B product based on the standard of the Voluntary Control Council for Interference from Information Technology Equipment (VCCI). If this is used near a radio or television receiver in a domestic environment, it may cause radio interference. Install and use the equipment according to the instruction manual.

**Korean Warning Statement for Class B ITE**

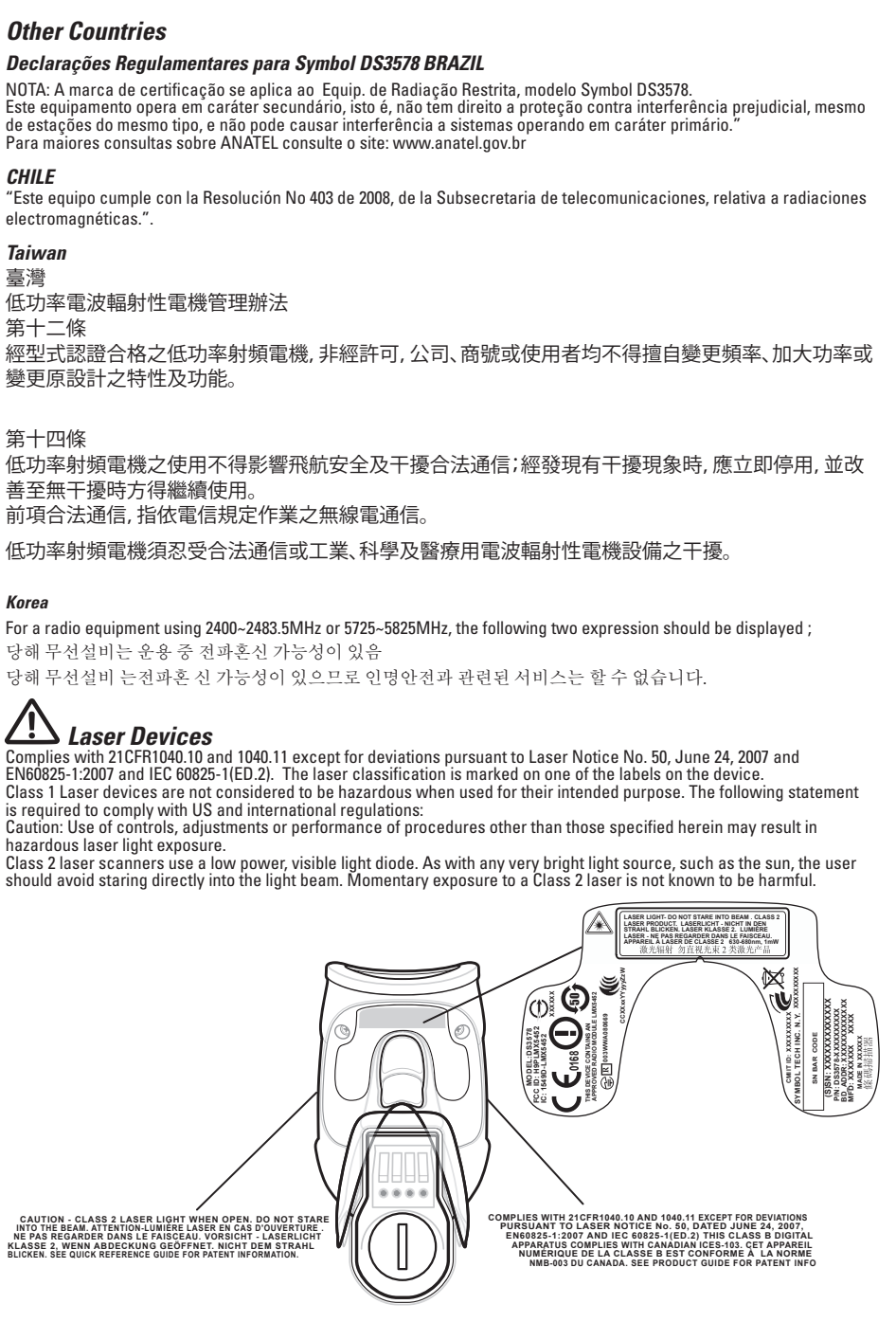
기종별	사용자안내문
B급 기기 (가정용 방송통신기기)	이 기기는 가정용(B급)으로 전자파적합등록을 한 기기로서 주로 가정에서 사용하는 것을 목적으로 하며, 모든 지역에서 사용할 수 있습니다.

**Other Countries**  
**Declarações Regulamentares para Symbol DS3578 BRAZIL**  
 NOTA: A marca de certificação se aplica ao Equip. de Radiação Restrita, modelo Symbol DS3578. Este equipamento opera em caráter secundário, isto é, não tem direito a proteção contra interferência prejudicial, mesmo de estações do mesmo tipo, e não pode causar interferência a sistemas operando em caráter primário. Para maiores consultas sobre ANATEL consulte o site: <http://www.anatel.gov.br>

**CHILE**  
 "Este equipo cumple con la Resolución N° 403 de 2008, de la Subsecretaría de telecomunicaciones, relativa a radiaciones electromagnéticas".

**Taiwan**  
 臺灣  
 低功率電波辐射性電機管理辦法  
 第十二條  
 經型式認證合格之低功率射頻電機，非經許可，公司、商號或使用者均不得擅自變更頻率、加大功率或變更原設計之特性及功能。  
 第十四條  
 低功率射頻電機之使用不得影響飛航安全及干擾合法通信；經發現有干擾現象時，應立即停用，並改善至無法干擾時方得繼續使用。前項合法通信，指依電信規定作業之無線電通信。  
 低功率射頻電機須忍受合法通信或工業、科學及醫療用電波辐射性電機設備之干擾。

**Korea**  
 For a radio equipment using 2400~2483.5MHz or 5725~5825MHz, the following two expression should be displayed ;  
 당해 무선설비는 운용 중 전파혼신 가능성이 있음  
 당해 무선설비는 전파혼신 가능성이 있으므로 인명안전과 관련된 서비스를 할 수 없습니다.



# SYMBOL DS3578

MOTOROLA and the Stylized M Logo and Symbol and the Symbol logo are registered in the U.S. Patent and Trademark Office. All other product or service names are the property of their respective owners. © Motorola, Inc. 2010  
<http://www.motorola.com/ds3578>

## Free Manuals Download Website

<http://myh66.com>

<http://usermanuals.us>

<http://www.somanuals.com>

<http://www.4manuals.cc>

<http://www.manual-lib.com>

<http://www.404manual.com>

<http://www.luxmanual.com>

<http://aubethermostatmanual.com>

Golf course search by state

<http://golfingnear.com>

Email search by domain

<http://emailbydomain.com>

Auto manuals search

<http://auto.somanuals.com>

TV manuals search

<http://tv.somanuals.com>