

---

---

# **VSuite™ 2.1** **for the Motorola Q Phone**

User Guide



**VoiceSignal**

---

July 2007

Copyright 2005, 2007 Voice Signal Technologies, Inc. All rights reserved.

No part of this manual may be reproduced in any form or by any means, electronic or mechanical, including photocopying, recording, or by any information storage and retrieval systems, without the express written consent of Voice Signal Technologies, Inc.

The content of this manual is furnished for informational use only, is subject to change without notice, and should not be construed as a commitment by Voice Signal Technologies, Inc. Voice Signal Technologies, Inc. assumes no responsibility or liability for any errors or inaccuracies that may appear in this manual.

VoiceSignal is a trademark and the VoiceSignal logo is a registered trademark of Voice Signal Technologies, Inc. Other trademarks and trade names may be used in this document to refer to either the entities claiming the marks and names or their products. Voice Signal Technologies, Inc. disclaims any proprietary interest in trademarks and trade names other than its own.

## Table of Contents

<b>ABOUT VSUITE™ 2.1 .....</b>	<b>4</b>
<b>STARTING VSUITE.....</b>	<b>5</b>
<b>CALLING A NAME OR NUMBER.....</b>	<b>6</b>
<b>SENDING A TEXT MESSAGE.....</b>	<b>8</b>
<b>LOOKING UP A CONTACT.....</b>	<b>9</b>
<b>OPENING AN APPLICATION.....</b>	<b>10</b>
<b>APPENDIX: VSUITE SETTINGS.....</b>	<b>11</b>
CHOICE LISTS .....	11
DIGIT DIALING .....	12
SENSITIVITY .....	12
SOUND.....	13
LANGUAGE.....	13
APPLICATION LAUNCHER .....	13
CONTACTS UPDATE .....	14

## About VSuite™ 2.1

VSuite™ 2.1 by VoiceSignal is an exciting upgrade to the VSuite 1.3 voice recognition application for wireless handsets and devices. VSuite 2.1 offers new features, even better performance, and access to a wide variety of voice-enabled dialing and application services.

VSuite 2.1 includes the following features:

- The **Call** command provides natural, one-step commands for placing calls to contact names or numbers. For example, you could say “*Call John Smith’s Mobile*” or “*Call 781 987-6543.*”
  - The **Send Text** command lets you initiate sending a text message to anyone in your contact list or to a specified number. For example, you could say “*Send Text John Smith*” or “*Send Text 781-555-1212.*”
  - The **Lookup** command lets you retrieve contact information for any entry in your contacts database. For example, you could say “*Lookup John Smith.*”
  - The **Open** command provides one-step access to applications and menus. For example, you could say “*Open Calendar*” to launch the phone’s Calendar application.
-

## Starting VSuite

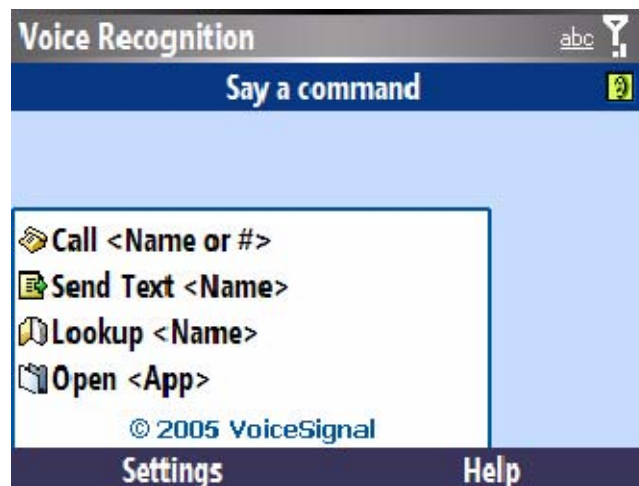
To start VSuite 2.1, you can either:

- ▶ Press and hold the **SpeakerPhone Key**

or...

- ▶ From the **Start** menu, select **Voice Recognition**

VSuite prompts you to “Say a command” and displays the available commands at the bottom of the screen.



**Note:** When you first start VSuite, it voice-activates the names stored in your contact list. If you have a large number of contacts, you might see the following message while VSuite is reading your contacts:

**Please wait while Voice Recognition updates your contacts.**

VSuite will only recognize the first 3,000 names stored in your contact list.

**Note:** You can change VSuite settings by starting VSuite and then selecting the “Settings” soft key. Refer to the appendix “VSuite Settings” for more information.

## Calling a Name or Number

Use the Call command to place a call. If the number you want to call is stored in your contact list, you can say the contact name and, optionally, which number (home, mobile, etc.) you want to call. If the number is not in your contact list, you can say the number itself.

► **To call a name or number:**

1. Start VSuite.  
You hear “*Say a command.*”
2. Say “**Call**” or...  
Say “**Call**” followed by the name of a person in your contact list, and optionally, the number location (home, work, mobile, etc.) to call or...  
Say “**Call**” followed by a valid telephone number.



---

### Examples

---

Call Angela Martinez

---

Call Tom Stewart at Work

---

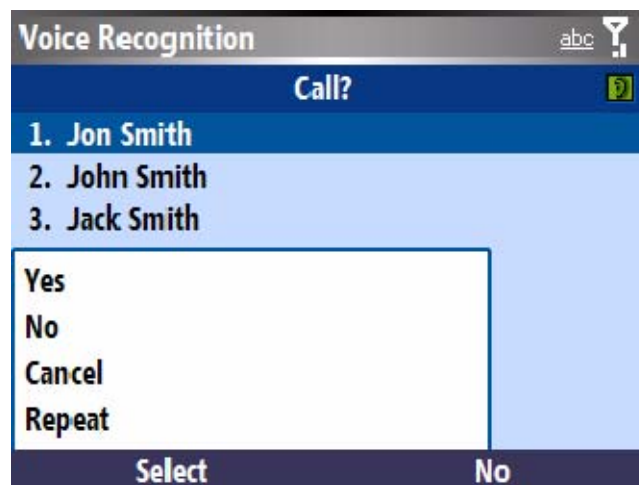
Call Donna Harper’s Mobile

---

Call 781 987-6543

---

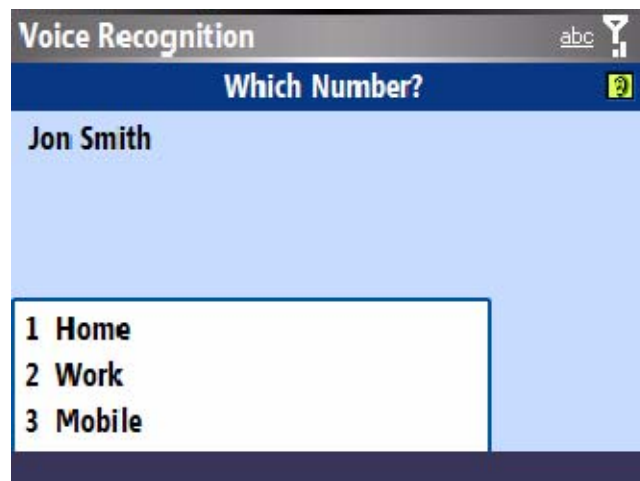
3. After you say a name or number, you might be prompted “*Did you say, ‘Call...?’*” followed by the first of up to three names or numbers.



To confirm a name or number, wait for the beep and then say “**Yes.**” You can also choose the correct name or number from the choice list using the phone’s arrow keys. For information on customizing the behavior of choice lists, see the appendix, “VSuite Settings.”

#### Hints for using Call:

- Wait for the beep before saying the command.
- When saying a name, speak clearly and say the name of a person in your contact list, first name followed by last name.
- If you say “Call” followed by a name, and there are multiple numbers stored for that name, VSuite prompts you with “*Which Number.*” Say the label (home, work, mobile, etc.) associated with the number you wish to call.



- When saying a telephone number, pronounce each digit clearly and distinctly but do not pause between the digits. VSuite recognizes the digits one, two, three, four, five, six, seven, eight, nine, zero, and “oh.” It does not recognize expressions such as “one eight hundred.” Instead, say “one eight zero zero.”
- If VSuite doesn’t recognize numbers correctly, try adapting digit dialing to your voice. To adapt digit dialing, choose **Digit Dialing → Adapt Digits** from the VSuite Settings menu.

## Sending a Text Message

Use the Send Text command to address a text message to any number stored in your contact list or to a specified number.

► **To call a name or number:**

1. Start VSuite.  
You hear “*Say a command.*”
2. Say “**Send Text**” followed immediately by the name of a person in your contact list or a valid telephone number.
3. After you say a name or number, you might be prompted, “*Did you say, ‘Send Text to...?’*” followed by the first of up to three names or numbers.

When your command is recognized, the phone displays the message application with the destination filled in.



---

### Examples

---

Send Text Angela Martinez

---

Send Text Tom Stewart at Work

---

Send Text to Donna Harper’s Mobile

---

Send Text 781 987-6543

---

Note that the Send Text command will open the message type that was last used (i.e., email, text message, or MMS message). For example, if the last message type that was opened is MMS, the Send Text command will open a new MMS message.



## Looking Up a Contact

Use the Lookup command to look up contact information for any person stored in your contact list.

► **To look up contact information:**

1. Start VSuite.  
You hear “*Say a command.*”
2. Say “**Lookup**” followed by the name of a person in your contact list.



---

### Examples

---

Lookup Angela Martinez

---

Lookup Tom Stewart

---

3. After you say a name, you might be prompted “*Did you say, ‘Lookup...?’*” followed by the first of up to three names. To confirm a name, wait for the beep and then say “**Yes.**” You can also choose the correct item from the choice list using the phone’s arrow keys.

### Hints for using Lookup:

- Wait for the beep before saying the command.
- When saying a name, speak clearly and say the name of a person in your contact list, first name followed by last name.

## Opening an Application

Use the “Open” command to open an application on your device.

► **To open an application or access a menu:**

1. Start VSuite.  
You hear “*Say a command.*”
2. Say “**Open**” or...  
Say “**Open**” followed by the application you want to open.



---

### Examples

---

Open (To see a list of applications you can open)

---

Open Calendar (etc.)

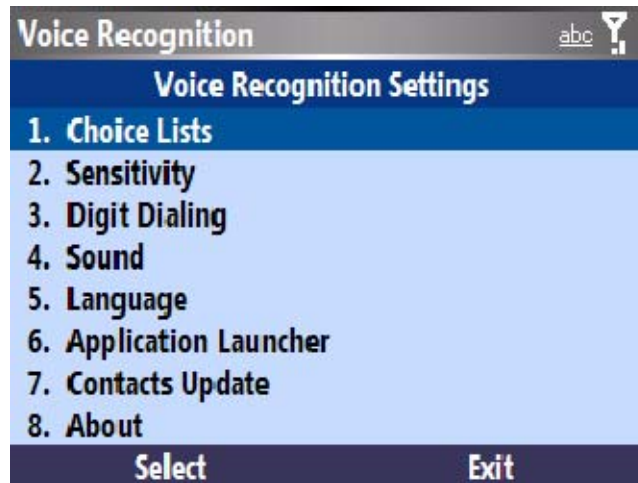
---

### Hints for using Open:

- Wait for the beep before saying the command.
- To see a list of applications/menu items you can open, say “Open.” VSuite displays a list and prompts you with “Please Choose.” You can then say the name of the application to open.
- If the list is too long to fit on one screen, the screen will contain the choice “Next Menu.” You can say one of the application or menu names on the list, or say “Next Menu” to view the next screen
- You can customize which applications you can launch by voice by choosing **Application Launcher** from the VSuite Settings menu. Refer to the appendix “VSuite Settings” for more information.

## Appendix: VSuite Settings

You can customize the behavior of the VSuite application using the VSuite Settings menu. To access the menu, start VSuite and then select the Settings soft key.



### Choice Lists

If VSuite is not absolutely confident that it has correctly identified a name or number, it can display a choice list of up to three possibilities, and prompt you to confirm the correct one.

You can control when choice lists appear by changing the Choice Lists setting to **Automatic**, **Always On**, or **Always Off**.

<b>Automatic</b>	VSuite displays a choice list when it is not confident it has identified the correct choice from among multiple alternatives.
<b>Always On</b>	When there are multiple alternatives, VSuite always displays a choice list.
<b>Always Off</b>	VSuite never displays a choice list. Instead, the application picks the best from among the possible choices.

## ***Digit Dialing***

Use the Digit Dialing menu to adapt digit dialing to your voice.

Note: Only adapt digit dialing if the phone is having consistent difficulty recognizing numbers when you use the Call command.

<b>Adapt Digits</b>	Lets you adapt digits, which can improve voice recognition of phone numbers. Adaptation takes about 60 seconds.
<b>Reset Digits</b>	Erases any digit adaptation you have done and resets digit recognition to the factory default. If you have not adapted digits, this option is grayed out.

## ***Sensitivity***

In VSuite, **Sensitivity** controls the balance between rejecting too much, which means the phone frequently does not recognize names, numbers, or commands, and rejecting too little, which means it frequently recognizes something even if nothing was said.

When VSuite rejects an utterance, it displays a message such as “Please repeat...” or “No match found.” If you frequently experience these messages, you might be able to get better recognition by adjusting the Sensitivity setting toward **Reject Less**.

If you frequently experience false activations (VSuite detects a wrong match), you might be able to get better performance by adjusting the Sensitivity setting toward **Reject More**.

<b>Commands</b>	Adjusts the sensitivity of command recognition.
<b>Names</b>	Adjusts the sensitivity of name recognition.

## Sound

You can customize the VSuite user interface by turning playback on or off for prompts, names, and numbers. You can also change the speed and volume of name playback.

When you first start using the VSuite application, it is recommended that you leave playback of prompts on. Once you are familiar with the application, you can turn playback of prompts off for faster voice dialing and voice control of applications.

<b>Prompts</b>	Turns playback on or off for prompts such as “Say a command.”
<b>Digits</b>	Turns playback on or off for digits, for example, when confirming a phone number.
<b>Names</b>	Turns playback on or off for names.
<b>Name Settings</b>	Adjusts the speed and volume of name playback.

## Language

The Language menu lets users choose the language to use for VSuite’s menus and text screens, audio prompts, voice recognition, and text-to-speech. The user can also choose “Automatic”, in which case VSuite will match the phone language setting.

Once a user chooses a new language and clicks on “OK”, the new language immediately takes effect.

When changing language, digit adaptation (see *Digit Dialing* above) will be lost.

## Application Launcher

VSuite lets you launch applications and access menus on your phone by saying “Open” followed by the name of the application or menu item. You can also specify which applications you want to be able to launch in this way. When you choose **Application Launcher** from the Settings menu, VSuite displays a list of applications.

Applications marked with a “✓” can be launched by voice. To mark or unmark an application, click on the check box to the left of the application name. When you are done, select Back.

## **Contacts Update**

When you first start VSuite, it voice-activates all the names that it finds in your contact list. If you have added or changed contacts since the last time you used VSuite, it automatically re-activates the entire list of names.

If you never want to wait for the application to update names, you can configure VSuite to turn off automatic contacts update. This allows you to update the list manually at your convenience.

<b>Configure</b>	Lets you set Contacts Update to either Automatic (the default) or Manual.  When set to Automatic, VSuite reads the contact list whenever contacts have been added or changed. When set to Manual, you must choose "Update now" to voice-activate new contacts.
<b>Update now</b>	Causes VSuite to read and voice-activate all the contacts in the contact list (used only when Contacts Update has been set to Manual).
<b>Help</b>	Displays help for the Contacts Update feature.

## Free Manuals Download Website

<http://myh66.com>

<http://usermanuals.us>

<http://www.somanuals.com>

<http://www.4manuals.cc>

<http://www.manual-lib.com>

<http://www.404manual.com>

<http://www.luxmanual.com>

<http://aubethermostatmanual.com>

Golf course search by state

<http://golfingnear.com>

Email search by domain

<http://emailbydomain.com>

Auto manuals search

<http://auto.somanuals.com>

TV manuals search

<http://tv.somanuals.com>