

welcome

The MOTONAV™ TN30 helps you find the best route with GPS accuracy. Clear turn-by-turn directions and spoken street names eliminate second-guessing when making a turn. Works as a speakerphone connecting with your compatible Bluetooth® enabled phone for hands-free calls. Locate your favorite restaurant, nearest bank, or see businesses and other locations along your route. Save time and gas, and leave getting lost to the past. The MOTONAV TN30 includes:

- Large, 4.3-inch anti-glare touch screen
- Turn-by-turn navigation with 2D and 3D display modes
- Bluetooth handsfree calling
- Clear spoken street names and directions
- Businesses and other listings shown on map
- SD memory card slot for adding additional maps

Note: Before using your device for the first time, be sure to review the important safety and legal pamphlet and follow instructions. Periodically review this information so you remember how to safely use your device.

before you begin

Warning: Traffic laws and current traffic conditions must always be observed and take precedence over the instructions issued by the navigation system. The user should be aware of situations where current traffic conditions and the instructions from the navigation system may be in conflict.

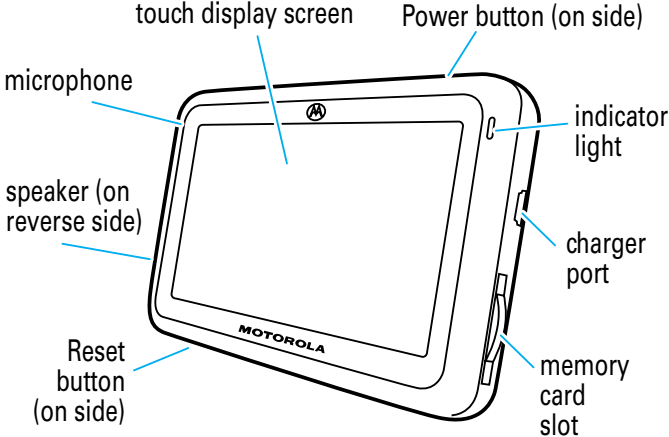
The use of the navigation system does not relieve the user of his/her responsibilities. The user is ultimately responsible for the vehicle under his/her control and should be aware of the surroundings at all times. For traffic safety reasons, it is recommended that routes should be planned in a stationary vehicle before starting a trip.

MOTOROLA IS NOT RESPONSIBLE FOR ANY DIRECT, INDIRECT, INCIDENTAL, CONSEQUENTIAL, EXEMPLARY, SPECIAL, OR PUNITIVE DAMAGES, OR OTHER DAMAGE ARISING OUT OF THE USE OF, OR INABILITY TO USE, THIS PRODUCT. THIS INCLUDES DAMAGE TO PROPERTY AND, TO THE EXTENT PERMITTED BY LAW, DAMAGES FOR PERSONAL INJURY AND DEATH.

Laws in some areas prohibit the use of a cellular phone and other devices when driving a motor vehicle. Please use the utmost care in using your devices safely under all circumstances. It is the responsibility of each user to be aware of and abide by any and all local laws and ordinances, which may restrict the use of cellular phones and other devices.

Your local law may prohibit attaching the Navigation Device to the windshield. In such case, attach the mount to the enclosed plastic disk and adhere it securely to a clean, smooth surface of your car. Never position the device in a manner which blocks your view of the road, interferes with the safe operation of the vehicle (e.g. do not place on the steering wheel or in front of an air bag), or could otherwise result in injury to the user. Always obey local laws and restrictions concerning use of such products.

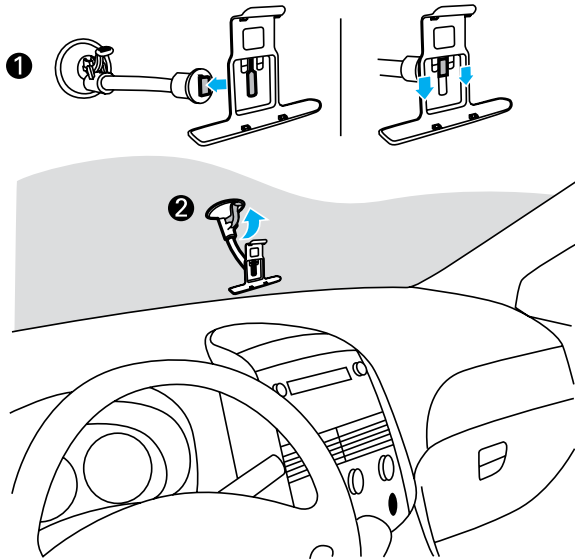
Take a moment before you get started to familiarize yourself with the components of your MOTONAV TN30.



mount it

You can safely secure your MOTONAV TN30 in your car using the included mounting holder.

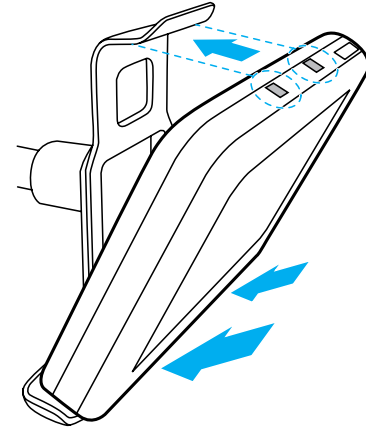
- 1 Slide holder down onto the extension arm.
- 2 Affix suction cup on extension arm to the windshield (push up on lever).



mount it

Note: You can also affix suction cup to the dashboard using the included circular disc (not shown). To do this, affix circular disc to your dash or center console, then attach the suction cup on the extension arm to the disc.

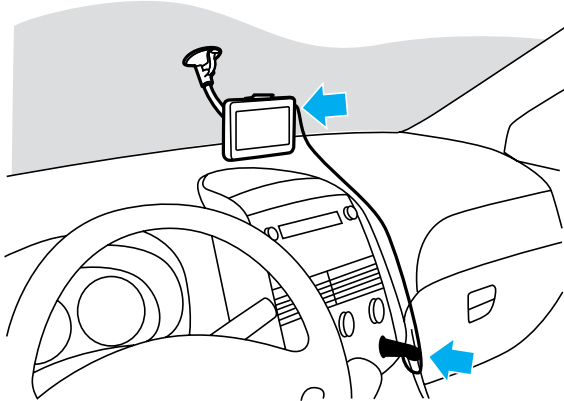
- 3 Place your MOTONAV TN30 in the holder.



- 4 Using both hands, adjust extension arm for optimal viewing off your MOTONAV TN30.

Once mounted, apply power to your MOTONAV TN30 using the included car charger.

- 1 Plug the charger into the power outlet in your vehicle.
- 2 Plug the charger into the USB port on your device.



When plugged into a charger, the indicator light is orange to indicate the device's internal battery is charging. When fully charged, the indicator light turns green.

Note: Your battery is designed to last the life of the product. It should only be removed by a recycling facility. ANY ATTEMPT TO REMOVE OR REPLACE YOUR BATTERY WILL DAMAGE THE PRODUCT.

For more details on powering and charging your MOTONAV TN30, see "power and charging" on page 20.

To get started, you need to turn on your MOTONAV TN30 and configure initial device settings:

- 1 Press and hold the **Power** button to turn on the device until the display becomes active.

After a few moments, a configuration wizard appears to provide step-by-step setup instructions.



- 2 Set your language preference and tap **OK**.
- 3 Review Warning message and tap **OK**.
- 4 Review End User License Agreement (EULA), then tap the **I Agree** checkbox and tap **OK**.
- 5 Set your time zone settings and tap **OK**.
- 6 Set your preferred measurement units and tap **OK**.

- 7 If using your Bluetooth phone to make and receive handsfree calls from your MOTONAV TN30, tap **Yes** button and follow these substeps to connect to your phone. Otherwise, tap **No** and skip to step 8.
 - a Turn off any Bluetooth devices previously paired with your MOTONAV TN30.
 - b Turn on the Bluetooth feature on your Bluetooth phone.
 - c Place phone in Bluetooth search mode.
 - d Select MOTONAV TN30 from search results on your phone.
 - e Select **OK** or **Yes** to pair your MOTONAV TN30 with your phone.
 - f If prompted, enter **0000** for passkey. When your MOTONAV TN30 successfully pairs and connects with your phone, you see a confirmation message.

get started

After successfully pairing your MOTONAV TN30 and Bluetooth phone, you don't need to repeat this step. For each use, ensure that your device is turned ON and that your phone's Bluetooth feature is ON.

- 8 Verify that the device displays your current location on the map view screen like shown below.



If you see **Finding Your GPS Location** at bottom of the screen, the MOTONAV TN30 is searching for GPS satellites. Move device to an open location with a clear view of the sky and wait a few minutes to obtain satellite GPS signal. When obtained, your current location appears on the map view screen.

Initial configuration of your MOTONAV TN30 is now complete!

use map screen

The map view screen provides your main view when driving to your destination. Tap the screen icons to control the map view and perform other tasks.



1 zoom map in and out	6 current street
2 display main menu	7 make handsfree call
3 change map view (2D or 3D)	8 battery charge indicator
4 change/mute volume	9 Bluetooth indicator
5 heading indicator	

find an address

To create a route to an address:

- 1 From the map view screen, tap **Menu** to access the main menu screen.
- 2 Tap **Go!**.
- 3 Tap **Address**. You see:



Note: To change state of destination, tap **Change** and select new state.

- 4 Tap the **Address** button.
- 5 Enter the town/city and tap **OK**.
- 6 Enter the street and tap **OK**.
- 7 Enter the address number and tap **OK**.
- 8 Tap **Go**.

A route is calculated to your selected address.

use route screen

Once you've mapped your route, the map view screen displays your route details.



Tap the **route status bar** to switch between viewing:

- travel distance, time remaining, and estimated time of arrival,
- current street name, or
- current speed and altitude.

Tap the **next street bar** to display route menu to:

- show driving directions,
- view route map overview, or
- cancel route.

Tap the **next turn icon** to repeat audio turn instructions.

find a destination

To search for and create a route to a business or other point of interest:

- 1 From the map view screen, tap **Menu** to access the main menu screen.
- 2 Tap **Go!**.
- 3 Tap **Food, Fuel, Lodging and More**. You see:



- 4 Tap **My Current Location** to search near your current location.
- 5 Tap desired destination type (or tap **Spell Place** to search by name).
- 6 Select the category and tap **OK**.
- 7 Select the destination and tap **OK**.
- 8 Tap **Go**.

A route is calculated to your selected destination.

receive a call

To make and receive calls using the MOTONAV TN30, a Bluetooth handsfree (HF) connection must be established with your phone (see step 7 on page 9 for details).

When there's an incoming call, the screen notifies you:



To answer the call, tap **Answer**. To ignore the call, tap **Ignore**.

while on a call

When a call is active, the map view screen displays icons to mute/unmute and end the call.



To mute the MOTONAV TN30 microphone, tap the **Mute** icon. When the call is muted, the icon changes to an **Unmute** icon. To unmute the MOTONAV TN30 microphone, tap the **Unmute** icon. The icon changes back to the **Mute** icon.

To end the call, tap the **End Call** icon.

During a call, you can switch the display to an In Call screen. To display the In Call screen, tap the **In Call Screen** icon.

while on a call

The In Call screen allows you to mute/unmute, end, and transfer a call between your phone and MOTONAV TN30.



To mute the MOTONAV TN30 microphone, tap **Mute**. When the call is muted, the icon changes to **Unmute**. To unmute the MOTONAV TN30 microphone, tap **Unmute**. The icon changes back to the **Mute** icon.

To end the call, tap **End Call**.

To transfer call to your phone, tap **Talk on Phone**. When the call is transferred, the icon changes to **Talk on TN30**. To transfer the call back to your MOTONAV TN30, tap **Talk on TN30**. The icon changes back to **Talk on Phone**.

During a call, you can switch back to the map view screen by tapping the upper left arrow.

To place a call using the MOTONAV TN30, tap the Call icon from the map view screen, or tap **Call** from the main menu screen). You see:



From this screen, you can do the following:

- To call a recent incoming /outgoing number, tap **Recent Calls**.
- To redial the last number, tap **Redial**.
- To dial a number, tap number followed by **Dial**.
- To use voice dialing, tap **Voice Dial** and follow the voice prompts.

- To choose the items (buttons, bars, icons) displayed on the map view screen, go to **Map** in the Settings screen from the main menu.
- To choose categories of locations to display on the map, go to **Map Icons** in the Settings screen from the main menu.
- To enable/display specific voice prompts and sounds, go to **Prompts** in the Settings screen from the main menu.
- To browse map, go to **Free Map Browsing** in the Settings screen from the main menu. Tap the map to select a location.
- To reset the MOTONAV TN30, press the **Power** button for 8 seconds, then press **Power** button again to turn on. You can also use a pin to press the **Reset** button.
- When creating a route to an address, after selecting the city, you can choose to go to the center of the city (versus an address) by selecting the "City Center" destination.

Your MOTONAV TN30 should be powered using the included car charger. When you disconnect the charger (or turn vehicle ignition off), it prompts you to touch the screen to switch to battery power. If you do not touch the screen, it will turn off after 30 seconds.

Please note the following:

- If powering down your MOTONAV TN30 using the **Power** button, it must also be powered on using the **Power** button.
- If your MOTONAV TN30 turns off after disconnecting the external power source, it turns back on when external power is restored or if you use **Power** button.
- If your MOTONAV TN30 is not used for more than 7 days, it enters a power saving mode that requires a **Power** button press to exit.
- When operating on battery power, the indicator light flashes red when the battery is low.
- Using another charger to charge your MOTONAV TN30 may not be as effective.
- The included car charger will not power Motorola phones.

Motorola, Inc.
Consumer Advocacy Office
1307 East Algonquin Road
Schaumburg, IL 60196

www.motorola.com

www.motorola.com/motonav

1-877-MOTOBLU (Motorola Bluetooth Support)

1-800-331-6456 (United States)

1-888-390-6456 (TTY/TDD United States for hearing impaired)

1-800-461-4575 (Canada)

The use of wireless devices and their accessories may be prohibited or restricted in certain areas. Always obey the laws and regulations on the use of these products.

All features, functionality, and other product specifications, as well as the information contained in this user's guide are based upon the latest available information and are believed to be accurate at the time of printing. Motorola reserves the right to change or modify any information or specifications without notice or obligation.

MOTOROLA and the Stylized M Logo are registered in the US Patent & Trademark Office. The Bluetooth trademarks are owned by their proprietor and used by Motorola, Inc. under license. All other product and service names are the property of their respective owners.

© 2008 Destinator is a registered trademark of Intrinsic Software International, Inc. Unauthorized duplication is a violation of all applicable laws. Other names and brands mentioned herein may be the property of their respective owners. Patents pending.

Map data: © 1993 – 2007 NAVTEQ. All rights reserved.

Bluetooth QD ID: B014454

Manual Number: 68000201367-A

© 2008 Motorola, Inc. All rights reserved.

Free Manuals Download Website

<http://myh66.com>

<http://usermanuals.us>

<http://www.somanuals.com>

<http://www.4manuals.cc>

<http://www.manual-lib.com>

<http://www.404manual.com>

<http://www.luxmanual.com>

<http://aubethermostatmanual.com>

Golf course search by state

<http://golfingnear.com>

Email search by domain

<http://emailbydomain.com>

Auto manuals search

<http://auto.somanuals.com>

TV manuals search

<http://tv.somanuals.com>