



motorola H390

Quick Start Guide

BEFORE YOU BEGIN

Before using this product, read the Important Safety and Legal Information pamphlet and follow its instructions.

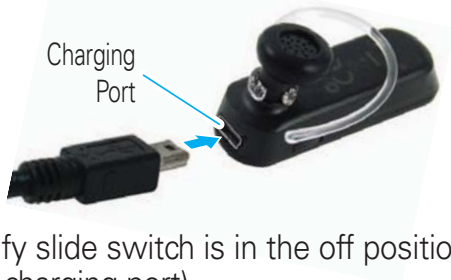
Take a moment before you get started to familiarize yourself with your new H390 Headset.



1

CHARGE

Your Headset's Battery



- 1 Verify slide switch is in the off position (toward the charging port).
- 2 Plug the Motorola charger into the end of the headset.

The indicator light turns red or yellow when the battery is charging. It may take up to 1 minute for the indicator light to turn on. When the headset's battery is fully charged (about 2 hours), the indicator light turns green.

- 3 Disconnect the charger.

Note: Headset is not functional while charging.

Note: This product uses a lithium ion, rechargeable, non-replaceable battery. Under normal use, the expected life of the rechargeable battery is approximately 400 charges.

2

START BLUETOOTH FEATURE

Your Phone

Your phone's Bluetooth feature is off by default. To use your headset, you must turn on the Bluetooth feature in your phone.

For most Motorola phones (at the main menu):

- 1 Press **[Menu]** (Menu) > **Settings** > **Connection** > **Bluetooth Link** > **Setup**.
- 2 Scroll to **Power**.
- 3 Select **Change**.
- 4 Scroll to **On**.
- 5 Press **Select** to turn on the Bluetooth feature. The Bluetooth feature remains on until you turn the feature off.

Note: These steps are for most Motorola phones. For other phones, see your phone's user's guide.

3

PAIR Your Headset

Before you can use your headset, you must pair (link) it with your phone.

Step A - ENSURE HEADSET IS IN PAIRING MODE

Power on headset by sliding the Power switch towards the microphone to initiate easy pairing. After a few moments, the indicator light will be steadily lit in blue to indicate headset is in pairing mode.



If the headset does not enter pairing mode, see **TROUBLESHOOTING** for help.

Motorola, Inc.
Consumer Advocacy Office
1307 East Algonquin Road
Schaumburg, IL 60196

www.motorola.com
1-877-MOTOBLU
1-888-390-6456 (TTY/TDD United States for hearing impaired)

Guide Number: 68000192001-A



Bluetooth OD ID: B014439

MOTOROLA and the Stylized M Logo are registered in the US Patent & Trademark Office. The use of wireless devices and their accessories may be prohibited or restricted in certain areas. Always obey the laws and regulations on the use of these products. The Bluetooth trademarks are owned by their proprietor and used by Motorola, Inc. under license. All other product or service names are the property of their respective owners.




3

PAIR *CONTINUED* Your Phone

Step B - SET YOUR PHONE TO LOOK FOR YOUR HEADSET

For most Motorola phones:

- 1 On your Motorola phone, press  (Menu) > Settings > Connection > Bluetooth Link > Handsfree > Look for Devices.

The phone lists Bluetooth devices it finds.

- 2 Select **Motorola H390**.
- 3 Select **OK** or **Yes** to pair your headset with your phone.
- 4 Enter the passkey: **0000**
- 5 Select **OK**.

When your headset successfully pairs and connects with your phone, the indicator light changes from steadily lit to flashing blue and purple.

Note: These steps are for most Motorola phones. For other phones, see your phone's user's guide.

4

TEST AND USE

Your phone and headset are now paired and ready to make and receive calls.

To make a call:

- 1 Place the headset over your ear.
- 2 On the phone, dial the number you want to call and press **SEND** key on your phone.

If your phone and headset are successfully paired, you will hear ringing on the headset.

After you have successfully paired your phone and headset, you don't need to repeat these steps. For daily use, ensure that your headset is turned ON and that your phone's Bluetooth feature is ON.

USING YOUR H390

See
**Features and
Functions Guide**
on the reverse side
for information on
using your H390



Note: If desired, your headset can be restored to original factory settings. This action will erase all pairing information stored in your headset. Thus, you will need to pair your phone and headset again (see step 3).

Note: To restore your headset to original factory settings, press and hold both Volume buttons and the Call button at the same time for 10 seconds.

TROUBLESHOOTING

My headset will not enter pairing mode.

Make sure that any devices previously paired with the headset are turned off. If the indicator light is not steadily lit in blue, turn off both the other device and headset, wait 10 seconds, then turn headset back on. Wait for the indicator light to become steadily lit in blue, indicating the headset is now in pairing mode.

My phone doesn't find my headset.

Make sure the indicator light on your headset is on (lit in blue) and steady when your phone is searching for devices (see step 3).

My headset worked before but now it's not working.

Make sure your phone is on and the Bluetooth feature is turned on in your phone (see step 2). If the Bluetooth feature was turned off or was turned on only temporarily, you may need to restart the Bluetooth feature (see step 2) and pair your phone and headset again (see step 3).

Support.

If you need more help, contact us at **1-877-MOTOBLU** or visit us at www.motorola.com/Bluetoothsupport



Features and Functions Guide

H390 Bluetooth® Handsfree Headset

IMPORTANT:

Be sure to first follow the **Quick Start Guide** on the reverse side of this guide to complete initial setup of your H390.

TURNING HEADSET ON AND OFF

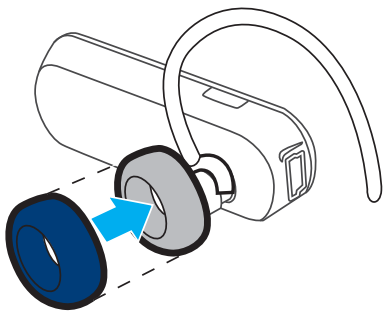
To turn your headset on, slide the switch toward the microphone. The indicator light flashes blue three times, then flashes in blue and purple (if connected with a device) or is steadily blue (if ready to be paired).

To turn your headset off, slide the switch toward the charging plug. The indicator light flashes three times then turns off.



EARBUDS AND YOUR HEADSET

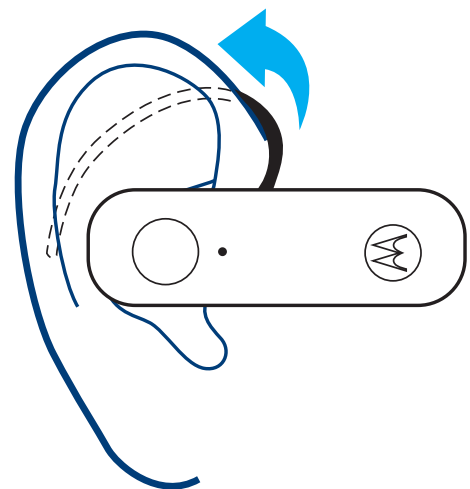
Your H390 headset is supplied with multiple earbuds. The earbud is fitted onto the end of your headset's earpiece speaker, and placed onto your ear when using your headset.



Your headset's performance is greatly dependent upon achieving a good fit on your ear. Therefore, we recommend trying all the supplied earbuds with your headset.

WEARING THE HEADSET

To wear your headset, flex the earhook and loop it over your ear as shown.

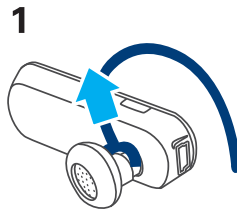


Be sure to position the ear cushion into your ear canal for optimal audio performance and comfort.

CHANGING FOR USE ON OTHER EAR

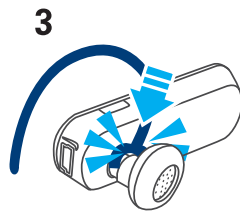
You can wear your H390 headset on your left or right ear. The headset comes ready for the right ear. To change the headset for the left ear:

- 1 Gently lift and pull the top of the earhook up and off speaker stem, as shown.



- 2 Flip the headset over.

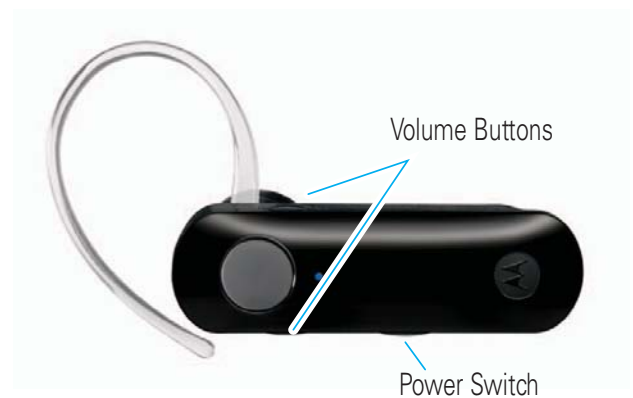
- 3 Attach the earhook to the speaker stem, as shown.




CHANGING VOLUME BUTTON ORIENTATION

You can also change the orientation of the volume buttons on your headset.

- 1 Turn the headset power off.
- 2 Press and hold the Volume button you want to assign as the "volume up" button and slide the switch toward the microphone. The indicator light flashes blue three times, then steady blue. When connected, it will flash blue/purple.



European Union Directives Conformance Statement

 Hereby, Motorola declares that this product is in compliance with:

- The essential requirements and other relevant provisions of Directive 1999/5/EC.
- All other relevant EU Directives.

IMEI: 350034/40/394721/9



Type: MC2-41H14

Product Approval Number

The above gives an example of a typical Product Approval Number.

You can view your product's Declaration of Conformity (DoC) to Directive 1999/5/EC (to R&TTE Directive) at www.motorola.com/rtte. To find your DoC, enter the product Approval Number from your product's label in the "Search" bar on the web site.

QUICK BATTERY CHECK

When not on a call, you can check your headset's battery charge level by pressing and holding both Volume buttons.

The indicator light displays charge status for 5 seconds. See below for details on indicator light and charge status.

Headset Indicator	Talk Time
Red	Less than 2.5 hours
Yellow	Between 2.5 to 5.5 hours
Green	Up to 8 hours

To save battery power, turn OFF the headset when you don't use it for an extended time by sliding the switch towards the charging plug.

Note: Your battery is designed to last the life of the product. It should only be removed by a recycling facility. ANY ATTEMPT TO REMOVE OR REPLACE YOUR BATTERY WILL DAMAGE THE PRODUCT.

MAKING CALLS

Function	Action
Receive a call	Tap the Call button
Mute or unmute a call	Tap both Volume buttons
Reject a call	Press and hold a Volume button until the ringer stops
End a call	Tap the Call button
Redial last call	Press and hold the Call button until you hear two tones
Make a voice dial call	Tap the Call button and wait for voice prompt
Answer second incoming call	Use phone to answer call (<i>follow your phone's instructions</i>)

Note: Your H390 supports both Handsfree and Headset Profiles. Accessing call functions depends upon which profile your phone supports. See your phone's user's guide for more information.

Note: Some features are phone/network dependent.

INDICATOR LIGHT

With the Charger Plugged In

Headset Indicator	Headset Status
Red	Charging (battery level less than 70% charge)
Yellow	Charging (battery level more than 70% charge)
Green	Charging complete

INDICATOR LIGHT

With No Charger Plugged In

Headset Indicator	Headset Status
Off	Power off
Three blue flashes	Powering on/off
Steady blue	Pairing/connect mode
Rapid blue/purple flashes	Connection successful
Quick blue flash	Incoming/outgoing call
Slow blue pulse	Connected (on a call)
Slow blue flash	Standby (not on a call)
Slow red flash	Idle (not connected to phone)
Slow purple pulse	Connected call muted
Steady red	Attempting to connect
Quick red flash	Low battery

Note: After 30 minutes on a call or of inactivity, the light stops flashing to conserve power, but the headset remains on.

AUDIO TONES

Audio Tone	Headset Status
Ascending tone	Powering on
Two descending tones	Powering off
Ring tone	Incoming call
Two short tones when pressing Volume button	Volume at minimum or maximum
High/low tones repeated every 60 sec.	Low battery
No audio indications; deteriorating quality	Out of range
Two ascending tones	Connected to phone
Two rapid ascending tones	Mute enabled
Two rapid descending tones	Mute disabled
Low tone every 10 seconds	Mute reminder

Free Manuals Download Website

<http://myh66.com>

<http://usermanuals.us>

<http://www.somanuals.com>

<http://www.4manuals.cc>

<http://www.manual-lib.com>

<http://www.404manual.com>

<http://www.luxmanual.com>

<http://aubethermostatmanual.com>

Golf course search by state

<http://golfingnear.com>

Email search by domain

<http://emailbydomain.com>

Auto manuals search

<http://auto.somanuals.com>

TV manuals search

<http://tv.somanuals.com>