

SURFboard®



Cable Modem



SB4100

User Guide



Regulatory Information

Federal Communications Commission Radio and Television Interface Statement for a Class 'B' Device.

This equipment has been tested and found to comply with the limits for a Class B digital device, pursuant to part 15 of the FCC Rules. These limits are designed to provide reasonable protection against harmful interference in the residential installation. This equipment generates, uses and can radiate radio frequency energy and, if not installed and used in accordance with the instructions, may cause harmful interference to radio communications. However, there is no guarantee that interference will not occur in a particular installation.

If the equipment does cause harmful interference to radio or television reception, which can be determined by turning the equipment off and on, the user is encouraged to try to correct the interference by one of the following measures:

- Increase the separation between the equipment and the affected receiver
- Connect the equipment on a circuit different from the one the receiver is on

You may find the following booklet, prepared by the Federal Communication Commission, helpful:

How to Identify and Resolve Radio-TV Interference Problems
Stock No. 004-000-0342-4,
U.S. Government Printing Office
Washington, DC 20402

Changes or modification not expressly approved by the party responsible for compliance could void the user's authority to operate the equipment.

This product was FCC compliant under test conditions that included the use of the supplied cable between system components. To be in compliance with FCC regulation, the user must use this cable and install it properly.



Different types of cord sets may be used for connections to the main supply circuit. Use only a main line cord that complies with all applicable product safety requirements of the country of use.

Declaration of Conformity

According to 47CFR, Parts 2 and 15 for Class B Personal Computers and Peripherals; and/or CPU Boards and Power Supplies used with Class B Personal Computers, Motorola BCS, 6450 Sequence Drive, San Diego, CA 92121, 1-800-225-9446, declares under sole responsibility that the product identifies with 47CFR Part 2 and 15 of the FCC Rules as a Class B digital device. Each product marketed is identical to the representative unit tested and found to be compliant with the standards. Records maintained continue to reflect the equipment being produced can be expected to be within the variation accepted, due to quantity production and testing on a statistical basis as required by 47CFR 2.909. Operation is subject to the following condition: This device must accept any interference received, including interference that may cause undesired operation. The above named party is responsible for ensuring that the equipment complies with the standards of 47CFR, Paragraph 15.101 to 15.109. The Class B digital apparatus meets all requirements of the Canadian Interference-Causing Equipment Regulations.

The SB4100 meets one or more of the standards listed:

Declaration of Conformity

We

Motorola, Inc.
Broadband Communications Sector
6450 Sequence Drive
San Diego, CA, U.S.A.

Declare under our sole responsibility that the

SURFboard Cable Modem Model SB4100i, SB4100E

To which the declaration relates is in conformity with the following standards:

EN55022 EN55024 EN60950
CISPR 22 CISPR 24 IEC950 : 1991 + A1 : 1992 + A2 : 1993 + A3 : 1995 + A4 : 1996

Following the provisions of the Directive(s) of the Council of the European Union:

EMC Directive 89/336/EEC Low Voltage Directive 73/23/EEC



This product was qualified under test conditions that included the use of the supplied cable between system components. To be in compliance with regulation, the user must use this cable and install it properly.

Use only an ac line cord that complies with the country's product safety requirements.

Use only a shielded Ethernet cable (STP) that complies with FCC regulations.

Model Standards

SB4100 FCC Part 15, ICES-003, UL/C-UL (UL1950 3rd Edition)

SB4100i EN55022, EN55024, EN60950, CISPR 22, CISPR 24, IEC950 : 1991 + A1 : 1992 + A2 : 1993 + A3 : 1995 + A4 : 1996, FCC Part 15, UL/C-UL (UL1950 3rd Edition)

SB4100E EN55022, EN55024, EN60950, CISPR 22, CISPR 24, IEC950 : 1991 + A1 : 1992 + A2 : 1993 + A3 : 1995 + A4 : 1996

Canadian Compliance

This Class B digital apparatus meets all requirements of the Canadian Interference-Causing Equipment Regulations. Cet appareil numérique de la classe B respecte toutes les exigences du Règlement sur le matériel brouilleur du Canada.

Warning

TO PREVENT FIRE OR SHOCK HAZARD, DO NOT EXPOSE THIS APPLIANCE TO RAIN OR MOISTURE.

Caution

TO PREVENT ELECTRICAL SHOCK, DO NOT USE THIS PLUG WITH AN EXTENSION CORD, RECEPTACLE, OR OTHER OUTLET UNLESS THE BLADES CAN BE FULLY INSERTED TO PREVENT BLADE EXPOSURE.

Caution

THESE SERVICING INSTRUCTIONS ARE FOR USE BY QUALIFIED PERSONNEL ONLY. TO REDUCE THE RISK OF ELECTRICAL SHOCK, DO NOT PERFORM ANY SERVICING OTHER THAN THAT CONTAINED IN THE INSTALLATION AND TROUBLESHOOTING INSTRUCTIONS UNLESS YOU ARE QUALIFIED TO DO SO. REFER ALL SERVICING TO QUALIFIED SERVICE PERSONNEL.

Repairs

If repair is necessary, contact your cable modem service provider.

© 2000 by Motorola, Inc. All rights reserved.

No part of this publication may be reproduced in any form or by any means or used to make any derivative work (such as translation, transformation or adaptation) without written permission from Motorola, Inc.

Motorola, Inc. reserves the right to revise this publication and to make changes in content from time to time without obligation on the part of Motorola, Inc. to provide notification of such revision or change. Motorola, Inc. provides this guide without warranty of any kind, either implied or expressed, including, but not limited, to the implied warranties of merchantability and fitness for a particular purpose. Motorola, Inc. may make improvements or changes in the product(s) described in this manual at any time.



and MOTOROLA are registered trademarks of Motorola, Inc. Macintosh is a registered trademark of Apple Corporation. Microsoft and Windows are registered trademarks of Microsoft Corporation. Netscape is a registered trademark of Netscape Communications Corporation. SURFboard and the SURFboard logo are registered trademarks of Motorola, Inc. UNIX is a registered trademark of the Open Group.

Windows screens reproduced by permission of Microsoft Corporation.

SURFboard®

Cable Modem

Introduction

Before You Begin Installation Operation Basic Configuration Troubleshooting

Easier!

Always on, always connected

Faster!

Up to 100 times faster than
a phone modem

Better!

A great choice for internet access

Just open your browser and *surf* !

Congratulations, you now have a new state-of-the-art SURFboard® SB4100, SB4100i, or SB4100E, cable modem. These high-speed modems enable you to connect your home or business computer to a DOCSIS-compliant or EuroDOCSIS-compliant (SB4100E) data network. The SB4100 transmits and receives data at much higher speeds than traditional telephone or ISDN modems.

It provides high-speed access to the Internet and other online services.

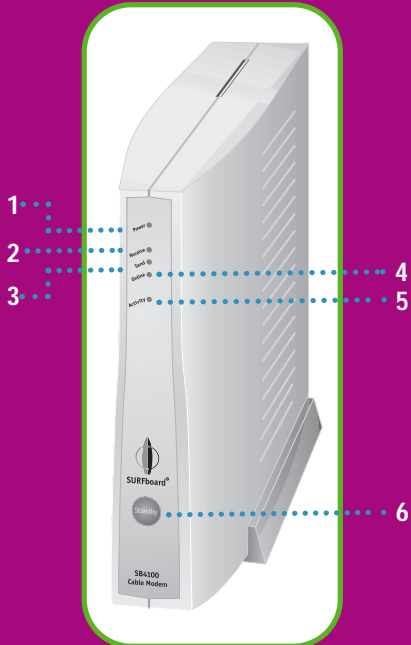
A new Universal Serial Bus (USB) port is available for a single-user direct connection to USB-equipped computers. The standard Ethernet connection provides network service to single or multiple users.

For all models, just open your browser and surf.

In this manual when we refer to SB4100 we are referring to SB4100, SB4100i, and SB4100E.

- * Unlike analog phone modems and ISDN you're always on, always connected.
- ** Actual speed will vary. Many network and other factors affect download speeds.
- *** SURFboard is made by the company with over 50 years of cable TV expertise.





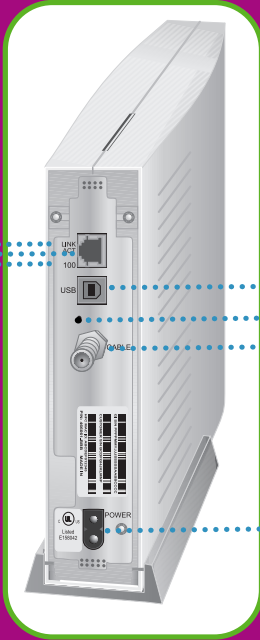
Front Panel

The five front-panel lights provide information about power, communications, and errors. The standby button suspends internet service.

Item	Description
1 Power	When the light is flashing, startup diagnostics are being performed. A solid light indicates the SB4100 is powered on.
2 Receive	When the light is flashing, the SB4100 is scanning for a receive channel connection. A solid light indicates the channel connection is acquired.
3 Send	When the light is flashing, the SB4100 is scanning for the send channel connection. A solid light indicates the channel connection is acquired.
4 Online	When the light is flashing, the SB4100 is scanning for the network configuration server connection. A solid light indicates the network connection is acquired.
5 Activity	When the light is flashing, the SB4100 is transmitting or receiving data. When the light is off, the SB4100 is not transferring data.
6 Standby	Press and the LED lights turn off indicating the Ethernet and USB ports are disabled (not receiving or transmitting data). The cable connection to the service provider remains active. Internet service is interrupted until the Standby button is pressed again. The Standby button offers added Internet security.


If an error occurs, the lights provide a quick way of detecting the problem. See Troubleshooting for more information.





Rear Panel

The rear panel provides cabling connectors, status lights, and power plug.

Item	Description
1	LINK/ACT When the light is on, the Ethernet connection is available. A blinking light indicates data is being transferred.
2	 This port is the Ethernet connector that transfers data to and from your computer.
3	100 The light is on when a 100Base-T link is established and off when a 10Base-T link is established.
4	USB This port provides a direct connection to USB equipped computers.
5	• This is the recessed reset button.
6	CABLE This port transfers data to and from the service provider.
7	POWER This connector provides power to the SB4100.





Power cord

10/100Base-T shielded
Ethernet cable



USB cable

SB4100
User Guide
CD-ROM



Equipment Check

Before you begin the installation, check that you have:

Item	Description
Power cord	Required to connect the SB4100 to the electrical outlet.
One 10/100Base-T shielded Ethernet cable	Required for connecting to the Ethernet port.
One USB cable	Required for connecting to the USB port.
SB4100 User Guide CD-ROM	Contains User Guide and USB drivers necessary for connecting to USB port.

You need to purchase a 75-ohm coaxial cable with F-type connectors for connecting your SB4100 to the nearest cable outlet. If you have a TV attached to the cable outlet, you may need a 5-900 MHz splitter to use both the TV and the SB4100.

These items are readily available at consumer electronic stores and departments.



The Ethernet card must be installed before the SB4100. If it isn't, follow the installation instructions that came with your Ethernet card.

System Requirements

To use the SB4100 with your computer system, you need the following:

Service Provider

You must sign up with your data service provider who provides access to the Internet and other online services.

Computer

Your computer must be equipped with a USB or Ethernet port and the Transport Control Protocol/Internet Protocol (TCP/IP) to access the SB4100. The SB4100 is compatible with Microsoft®, Macintosh®, and UNIX® operating systems.

Computers using Windows® 95, UNIX, or Macintosh systems must use the Ethernet connection.

HTML Browser

Any standard HTML (web) browser works with the SB4100.

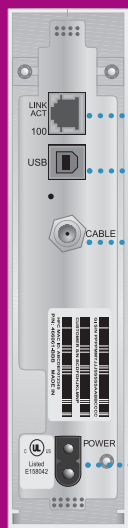
Ethernet Card or USB Special Software

Any standard 10/100Base-T Ethernet card operates with the SB4100. This is not needed if connecting to the USB port. The Ethernet card must be installed before the SB4100. If it is not, follow the installation instructions included with your Ethernet card.

The USB connection is supported by Windows 98, Windows 2000, and Windows Me, and requires special software to operate. All USB drivers are on the CD-ROM supplied with your SB4100.

Your computer must be configured for TCP/IP and have an IP address for the SB4100 to operate. Your service provider furnishes the IP address.





Ethernet to computer

USB to computer

TV cable
to cable outlet

Power cord to
electrical outlet

You must call your service provider to activate your service. You need to provide the media access control (MAC) address. This address is found on the bar code label marked HFC MAC ID on the rear panel.

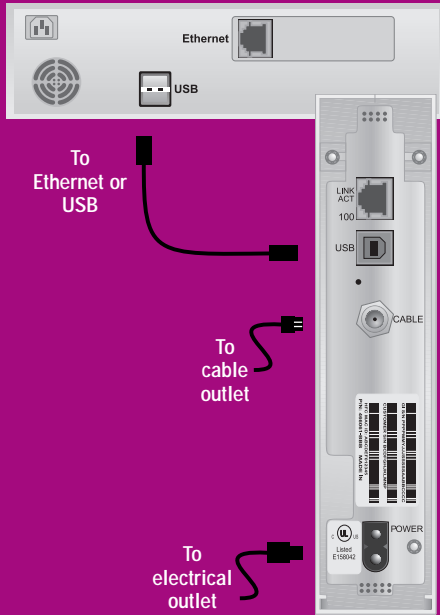
The address format is 00:20:40:xx:xx:xx.



Precautions

- Do not block the ventilation holes on the sides of the modem to prevent it from overheating.
- Do not open the SB4100 cable modem. Refer all service to your local service provider.
- Wipe the modem with a clean, dry cloth. Never use cleaning fluid or similar chemicals. Do not spray cleaners directly on the unit or use forced air to remove dust.





Cabling For a Single User

- 1 Connect the coaxial TV cable to the SB4100 connector marked **CABLE** and the other end to the cable outlet or splitter. Hand-tighten the connectors to avoid damaging them.

You may need a 5-900 MHz splitter and an additional length of 75-ohm coaxial cable if you have a TV connected to the cable outlet.

- 2 Plug the power cord into the SB4100 connector marked **POWER** and the other end to the electrical outlet.

- 3 Connect your computer to the SB4100 using one of the following methods:

Ethernet

Connect the 10/100Base-T shielded Ethernet cable to the SB4100 Ethernet connector and the other end to the Ethernet jack on the back of your computer.

or

USB

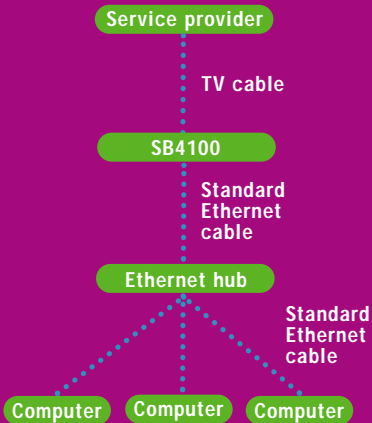
Connect the USB cable to the SB4100 port marked **usb** and the other end to the USB port on the back of your computer.

CAUTION !



Do not connect both Ethernet and USB cables to the same computer.





Cabling For Multiple Users

Your service provider must configure your modem for multiple user service. Contact your service provider for availability and instructions.

The SB4100 supports many multiple user configurations. It can easily serve as a gateway to the Internet for up to 32 users.

Ethernet

Multiple users must be connected to an Ethernet hub, which should be attached to the SB4100.



CAUTION !



Do not connect both Ethernet and USB cables to the same computer.



Cabling For Multiple Users



Multiple user configurations can include Ethernet and USB connections.

Ethernet and USB

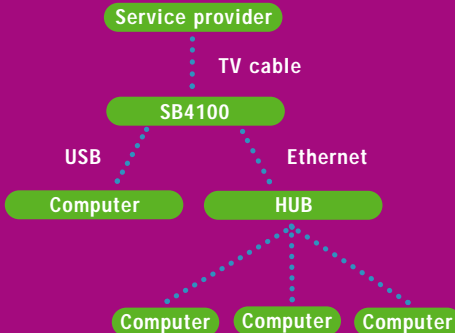
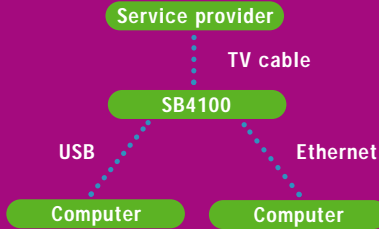
For two users on individual computers, connect the USB and Ethernet ports directly to the SB4100.

Multiple users are supported with a single user attached to the USB port and the remaining (up to 31) users connected to the Ethernet hub.

CAUTION !



Do not connect both Ethernet and USB cables to the same computer.



To turn on your SB4100, simply plug it in. It is not necessary to unplug it when not in use.

Powering Up the First Time

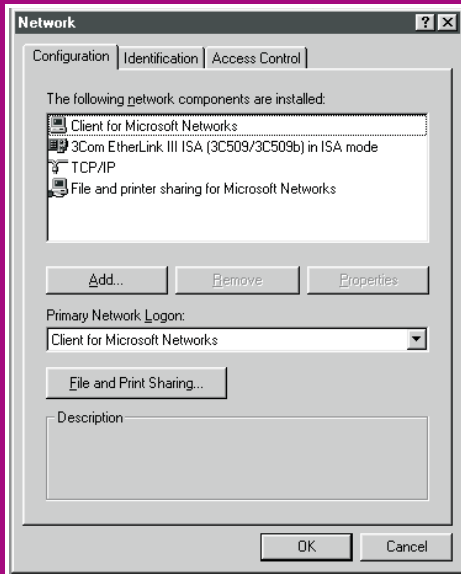
You must allow 5 to 30 minutes to power up the first time because the SB4100 must find and lock on the appropriate channels for communications.

- 1 Be sure that your computer is on and the SB4100 is unplugged.
- 2 Plug the SB4100 in and check that the lights on the front panel cycle through this sequence:
 - Power flashes during a self-test. When the self-test is successfully complete, the light is solid green.
 - Receive flashes while the SB4100 scans for the receive channel. When the receive channel is locked, the light is solid green.

- Send flashes while the SB4100 scans for the send channel. When the send channel is locked, the light is solid green.
- Online flashes while the SB4100 is obtaining configuration information. When the configuration information is obtained, the light is solid green.

During normal operation, the Power, Receive, Send, and Online lights are on and the Activity light flashes when transferring data between the SB4100 and your computer.





The SB4100 contains all necessary software. You don't need to configure the SB4100 but you must configure your computer for TCP/IP (software protocol developed for communication between computers) and check for an IP address. Your service provider may provide additional instructions for setting up your computer.

Configuring for TCP/IP

The following basic instructions are for Windows 95 or Windows 98. If you are using a different operating system, refer to that user guide.

- 1 On the Windows Desktop, click Start.
- 2 Select Settings and then Control Panel from the pop-up menus.

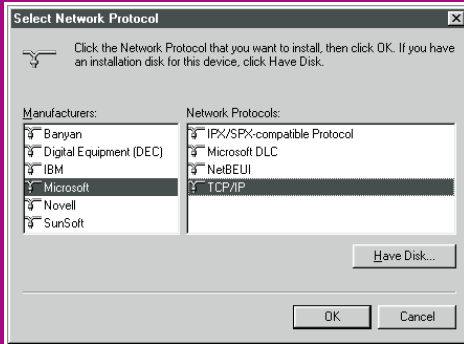
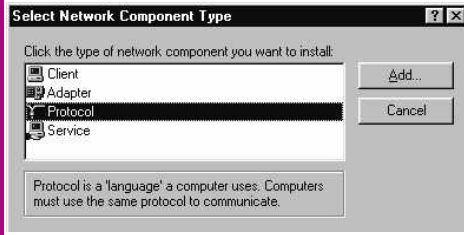
- 3 Double-click the Network icon on the Control Panel window.
- 4 Select the Configuration tab on the Network window for Windows 95 or Windows 98.
- 5 Check to see if TCP/IP has been installed for the device being used (Ethernet card or USB). If TCP/IP appears in the list of network components, it is installed and you can proceed to step 10. If it doesn't appear on the list, continue with step 6.



Configuring for TCP/IP

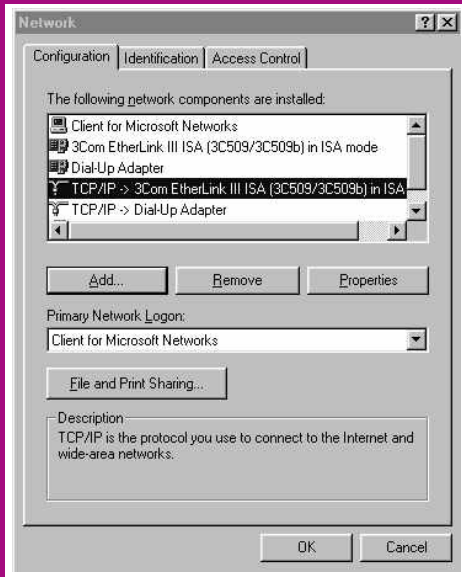


- 6 Click Add.
- 7 Double-click the Protocol option on Select Network Component Type window.
- 8 Click Microsoft in the Manufacturers section and then click TCP/IP in the Network Protocol section of Select Network Protocol window.
- 9 Click OK.



Configuring for TCP/IP

- 10 Click TCP/IP on the Network window. If you have more than one TCP/IP entry, choose the one associated with the Ethernet card or USB device connected to the SB4100.
- 11 Click Properties.
- 12 Select the IP Address tab on the TCP/IP window.
- 13 Click Obtain an IP address automatically.
- 14 Click OK to accept the TCP/IP settings.
- 15 Click OK to close the Network window.
- 16 Click OK when a prompt to restart your computer is displayed and then click OK again.





Installing USB Device Drivers



The USB drivers can interface with Windows 98, Windows 2000, or Windows Me.

System files are needed when loading the USB drivers. These files may already be on your PC or you may be required to load them from the Microsoft CD that came with your PC.

- 1 Check that the USB cable is connected from the PC to the cable modem. If it has not been installed, refer to Installation For a Single User.
- 2 Insert the CD into the CD driver. The PC automatically recognizes the USB connection.



Installing USB Device Drivers



- 3 Click CD-ROM drive and Specify a location.
- 4 Click Browse.
- 5 Select your CD drive and USB drivers.
Example: D:\USB DEVICE DRIVERS
- 6 Click Next to load the USB drivers.
- 7 Click Next to install the driver on the location displayed.
- 8 If the operating system is not installed on the hard drive, insert your Microsoft Operating CD when prompted.
or
If the operating system is loaded on the hard drive, click Next at the prompt.
- 9 Click Yes to restart your computer.





Uninstalling USB Device Drivers

The uninstall procedure will remove the SB4100 USB drivers and registry entries from Windows 98, Windows Me, and Windows 2000. If operating problems develop, it may become necessary to uninstall the USB drivers. Refer to the appropriate instructions for your operating system.

Uninstalling for Windows 98 or Windows Me

- 1 On the Windows Desktop, click Start.
- 2 Select Settings and then Control Panel from the pop-up menu.
- 3 Double-click System.
- 4 Click the Device Manager tab.
- 5 Double-click Network Adapters.
- 6 Click SB4100.
or
Click Other to locate the SB4100 if it does not appear in the Network Adapters.
- 7 Click Remove.

This uninstalls the device from your computer system; however, the operating system (O/S) may leave some driver files on the hard drive. Refer to Removing O/S Files.

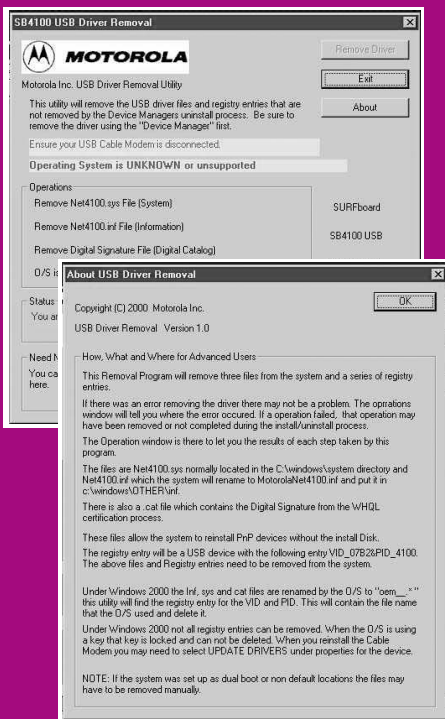


Uninstalling for Windows 2000

- 1 On the Windows Desktop, click Start.
- 2 Select Settings and then Control Panel from the pop-up menu.
- 3 Double-click System.
- 4 Select the Hardware tab.
- 5 Click Device Manager (center right in window).
- 6 Double-click Network Adapters.
- 7 Highlight SB4100.
- 8 Right-click SB4100.
or
Click Other to locate the SB4100 if it does not appear in the Network Adapters.
- 9 Click Uninstall.
- 10 Click OK.

This uninstalls the device from your computer system; however, the operating system (O/S) may leave some driver files on the hard drive. Refer to Removing O/S Files.





Removing Operating System (O/S) Files

- 1 Be sure the SB4100 modem is disconnected from your computer.
- 2 Insert the SB4100 CD into the CD drive.
- 3 On the Windows Desktop, click Start.
- 4 Select Run.
- 5 Type in your CD drive and then remove.exe.
Example: D:\remove.exe.
- 6 Click OK and the remove program automatically runs. An operations message and the O/S name display above the Operations box.
- 7 If the O/S is not supported, the remove utility is disabled. Go to step 10.
- 8 If an O/S is supported, click Remove Driver.
Each step displays in green indicating the file is being removed. If a file cannot be located, the remove process fails and displays the step in red.
A file could be missing if the original USB installation process was interrupted and the files were not fully installed.
- 9 Click About to view files and registries that can be removed manually in Microsoft Explore. This screen also provides more information on the function of the USB Driver Removal application.
- 10 Click Exit.

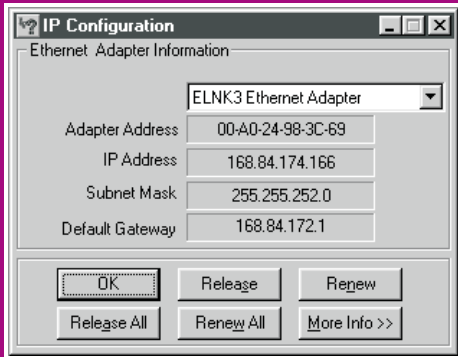


Verifying Your IP Address

The following basic instructions are for Windows 95 or Windows 98. If you are using a different operating system, refer to that user guide. To check the IP address:

- 1 On the Windows Desktop, click Start.
- 2 Select Run.
- 3 Type winipcfg.exe. A window similar to the example is displayed.
- 4 Select your adapter name (the Ethernet card or USB device).
- 5 Click Renew.
- 6 Click OK after the system displays an IP address.

If after performing this procedure your computer does not access the Internet, call your service provider. They will assist in your configuration.



The Problem

Green POWER light is off

Cannot receive or send data

This information is to help you quickly solve a problem. Before calling your service provider, try pressing the reset button on the rear panel. Resetting the SB4100 may take 5 to 30 minutes. Your service provider will need to know the status of the front-panel lights.

Possible Solution

- Check that the electrical outlet is working.
 - Check that the power cord is properly plugged into the wall outlet and the rear panel of the SB4100.
 - Press the Standby button to reconnect Internet service.
 - Press the reset button.
 - Call your service provider.
-
- Check the lights on the front panel. Note the first light from top to bottom that is off. This light indicates where the error occurred. If the first light that is off is:
 - Receive** During normal operation, the receive channel is lost. During startup, the receive channel is not acquired.
 - Send** During normal operation, the send channel is lost. During startup, the send channel is not acquired.
 - Online** During normal operations, the IP registration is lost. During startup, the IP registration was not successful.
 - Power** Modem may be in standby mode, press Standby button.



The Problem

Cannot receive or send data

Cannot view User Guide
CD Video

Possible Solution

- Check that your TV is working if you have cable and you have a clear TV picture. If you are not receiving your regular TV channels, your data service will not function.
 - Check the coaxial cable at the modem and wall outlet, and hand-tighten if necessary.
 - Check the IP address (follow the steps in Verifying Your IP Address); call your service provider if you need an IP address.
 - Check the USB or Ethernet cable at the modem and your computer.
 - Press the Standby button to reconnect Internet Service.
-
- Check that Acrobat Reader 4.0 is installed and selected.



Software License Notices

IMPORTANT: PLEASE READ THIS SOFTWARE LICENSE AGREEMENT ("AGREEMENT") CAREFULLY BEFORE YOU OPEN THE PRODUCT PACKAGE AND USE THE PRODUCT. BY OPENING THE PRODUCT PACKAGE AND USING THE PRODUCT YOU INDICATE YOUR ACCEPTANCE OF EACH OF THE TERMS OF THIS AGREEMENT AND AGREE TO BE BOUND BY THE TERMS OF THIS AGREEMENT. UPON ACCEPTANCE, THIS AGREEMENT WILL BE A LEGALLY BINDING AGREEMENT BETWEEN YOU AND MOTOROLA BCS. THE TERMS OF THIS AGREEMENT APPLY TO YOU AND TO ANY SUBSEQUENT LICENSEE OF THIS PRODUCT.

IF YOU DO NOT AGREE TO ALL OF THE TERMS OF THIS AGREEMENT:

DO NOT INSTALL OR USE THE PRODUCT, ITS SOFTWARE, COMPONENTS, DOCUMENTATION OR ANY OTHER CONTENTS OF THE PRODUCT PACKAGE.

RETURN THIS PRODUCT INCLUDING ALL SOFTWARE, COMPONENTS, DOCUMENTATION OR ANY OTHER CONTENTS OF THE PRODUCT PACKAGE, WITHIN TEN (10) DAYS AFTER PURCHASE TO THE SERVICE PROVIDER.

YOU SHOULD OPEN THIS PRODUCT PACKAGE AND USE THE PRODUCT ONLY IF YOU ACCEPT EACH OF THE TERMS OF THIS SOFTWARE LICENSE AGREEMENT.

Any and all firmware and/or software accompanying the Motorola BCS Cable Modem (collectively "Software") is never sold. Motorola BCS licenses the Software to the original customer and to any subsequent licensee for personal use only on the terms of this Agreement. Motorola BCS retains the ownership of the Software. The Software is licensed to you under the following terms.



Software License Agreement

You may:

USE the Software only in connection with the operation of the Motorola BCS Cable Modem provided with this package.

TRANSFER the Software and this license (including all component parts and printed materials) permanently to another person, but only if the person agrees to accept all of the terms of this License. If you transfer the Software, you must at the same time either transfer all copies of the Software (if applicable) to the same person or destroy any copies not transferred.

TERMINATE this License by destroying the original and all copies of the Software (if applicable) in whatever form.

You may not:

LOAN, distribute, rent, lease, give, sublicense or otherwise transfer the Software or documentation (or any copy of the Software or documentation), in whole or in part, to any other person, except as permitted under the TRANSFER paragraph above.

COPY or translate the User Guide included with the Software.

COPY, alter, translate, decompile, disassemble or reverse engineer the Software or documentation, including but not limited to, modifying the Software to make it operate on non-compatible hardware.

REMOVE, alter or cause not to be displayed, any copyright notices or startup message contained in the Software programs or documentation.

EXPORT, the software or product components in violation of any United States export laws.

The Software is not designed or intended for use in on-line control of aircraft, air traffic, aircraft navigation or aircraft communications; or in design, construction, operation or maintenance of any nuclear facility. Motorola BCS and its licensors disclaim any express or implied warranty of fitness for such uses. You represent and warrant that you shall not use the Software for such purposes.

Title of this Software and the documentation, including the ownership of all copyrights, mask work rights, patents, trademarks and all other intellectual property rights subsisting in the foregoing, and all adaptations to and modifications of the foregoing shall at all times remain with Motorola BCS. Motorola BCS retains all rights not expressly licensed under this License. This Product, the Software and the documentation, including any images, graphics, photographs, animation, video, audio, music and text incorporated therein is owned by Motorola BCS or its suppliers and is protected by United States copyright laws and international treaty provisions. Except as otherwise expressly provided in this License, the copying, reproduction, distribution or preparation of derivative works of the Software, any portion of the Product or the documentation is strictly prohibited by such laws and treaty provisions. Nothing in this License constitutes a waiver of Motorola BCS' rights under United States copyright law.

This License and your rights regarding any matter it addresses are governed by the laws of the Commonwealth of Pennsylvania, without reference to conflict of law principles. THIS LICENSE SHALL TERMINATE AUTOMATICALLY if you fail to comply with the terms of this License.

Motorola BCS is not responsible for any third party software provided as a bundled application, or otherwise, with the Software.



U.S. Government Restricted Rights

The Software, Product and documentation are provided with RESTRICTED RIGHTS. The use, duplication or disclosure by the Government is subject to restrictions as set forth in subdivision (c)(1)(ii) of The Rights in Technical Data and Computer Software clause at 52.227-7013. The contractor/manufacturer is the Broadband Communications Sector of Motorola, Inc ("Motorola BCS"), 6450 Sequence Drive, San Diego, CA 92121.

Export Restriction

You agree that, without obtaining the necessary license or approval from the United States government, you will not knowingly (i) export, directly or indirectly, the software to any country for which the United States government or any agency thereof at the time of export requires an export license or other governmental approval, or (ii) provide the software to any national of any country for which the United States government or any agency thereof requires an export license or other governmental approval.



Free Manuals Download Website

<http://myh66.com>

<http://usermanuals.us>

<http://www.somanuals.com>

<http://www.4manuals.cc>

<http://www.manual-lib.com>

<http://www.404manual.com>

<http://www.luxmanual.com>

<http://aubethermostatmanual.com>

Golf course search by state

<http://golfingnear.com>

Email search by domain

<http://emailbydomain.com>

Auto manuals search

<http://auto.somanuals.com>

TV manuals search

<http://tv.somanuals.com>