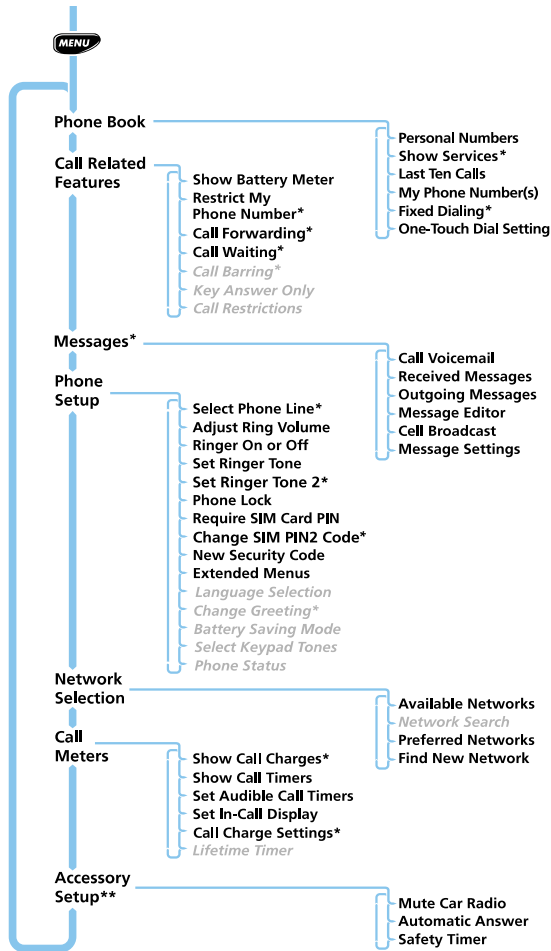
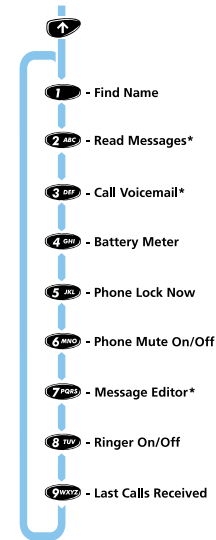


Options Menu



Quick Access Menu ‡



Menu Navigation



Items shown in *italics* are available only when **Extended Menus** are switched on.

* Network dependent features.

‡ The features and the positions of the features in the Quick Access Menu can be changed.

** The **Accessory Setup** option is available only when a car kit is fitted.

Special Keys

- PWR** Turns phone on and off.
- OK** Accepts call, or selects menu option or setting.
- ↑** Accesses the Quick Access features.
- MENU** Accesses the Options or Phone Book menus.
- C** Clears numbers or rejects call, setting, or option.
- ←*#▶** Scroll through menu features.
- STO** Adds a Phone Book entry.
- RCL** Retrieves a Phone Book entry.

Making a Call

Enter **Phone No.** **OK**.

Receiving a Call

Open the phone, or press **OK**.

Ending a Call

Press **OK** or close the phone.

Making an Emergency Call

Enter **9WXYZ 1 1 OK**.

Redialing the Last Number Called

- 1 Press **OK** to display the last number dialed.
- 2 Press **OK** to call the number.

One-Touch Dialing

Press and hold the appropriate digit key, **1** through **9WXYZ**, for numbers in the first nine memory locations.

Storing Numbers in the Phone Book

- 1 Press **STO** to add an entry.
- 2 Press **OK** to select phone memory, or **#▶ OK** to select SIM card memory.
- 3 Enter **Phone No.** **OK**, then **Name** **OK**, then **Location** **OK**.

Dialing Phone Book Numbers

Press **RCL** **Location** **OK**.

Quick Access Features

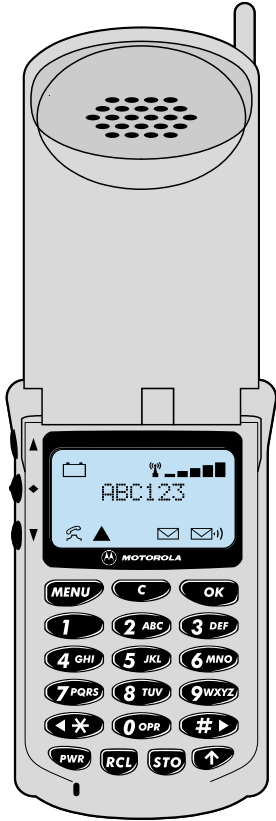
Press **↑** followed by the appropriate key, **1** through **9WXYZ**, or press **↑** and then use **←*#▶** and **#▶** to scroll to the feature and press **OK** to select.

Smart Button Operation

Press the Smart Button, located on the side of the phone, to access an alphabetic list of your Phone Book entries.



Introduction



Congratulations on your purchase of a PCS telephone from *Motorola*, the world leader in wireless communications.

All *Motorola* PCS telephones are manufactured to exacting specifications and world-class quality standards, and are designed to withstand the rigors of the real world. Our commitment to Total Customer Satisfaction and over sixty-five years of experience in personal communications mean you can depend on the quality of this *Motorola* product.

This phone incorporates our *Personality*[™] interface. Unique to *Motorola*, the *Personality*[™] interface helps make PCS communications easier by guiding you through features with easy-to-read LCD displays and offering you simple choices every step of the way. It also allows you to personalize the way you use your phone. For example, you can choose different ringer tones, store names and numbers into a personal Phone Book, and more. All features are presented by your phone with clarity and simplicity. In this manual, each of the *Personality*[™] features is identified with an **OK** symbol to indicate that it is customizable to meet your requirements.

This PCS telephone has been designed for use with PCS 1900 networks. By using digital communications methods, your phone provides a number of advantages:

- Superior speech quality* is attained with much less of the usual background noises and interference.
- Your conversation is encrypted for security. Encryption helps conversations from being eavesdropped on by scanning equipment.

Your subscriber number is not contained within the phone as with other systems. Instead, a 'Smart Card' known as a SIM (Subscriber Identity Module) can be supplied by your Service Provider. All call billing is made to the subscriber number on the card whether it is used in this or any other PCS handset unit.

*Both Full-Rate and Enhanced Full-Rate Capable.

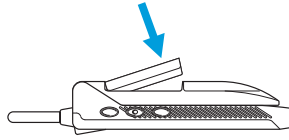
Getting Started

In order to get started using your new StarTAC phone right away, follow these simple steps:

Charge the Battery

! Before you use your phone, please see 'Your Battery' on page 11 for important information on battery charging.

- 1 Remove the battery from its holder and clip it into your phone.
- 2 Snap the included AC plug into the top of the power adapter.
- 3 Connect the power adapter to the phone and plug it in.



Powering On

- 1 Insert the SIM card into the slot in the base of your phone.
- 2 Fully extend the antenna.
- 3 Open your phone and press **PWR** to switch on.
- 4 If prompted, enter your PIN code and press **OK**.

Once a PCS network is located by your phone, it connects and the network name appears on the display.

Making a Call

- 1 Enter the number you want to call.
- 2 Press **OK**. Your call is placed!

IMPORTANT! Ending a Call

When you have finished your conversation, press **OK** or close the phone to end your call.

Exploring

Did you know that you can leave your phone on when charging the battery? Now, while your phone's battery is charging for the first time, may be a good time to begin exploring your phone's menu and features, or make or receive a call if you wish.

Contents

Safety	
Important information for the efficient and safe operation of your phone	5
About Your Phone, Battery, and SIM Card	
Introduces your phone, explains how to charge and maintain batteries, and explains SIM Card functionality	9
Making and Receiving Phone Calls	
Explains how to call a number, how to redial and how to accept a call	17
Menu Navigation	
Explains how to access and use the phone's menus	25
Using The Options Menu	
Provides an explanation of the Options Menu and how to use it	29
Using the Quick Access Menu	
Provides an explanation of the Quick Access Menu and how to use it	63
Accessories	
Details the accessories available for use with your phone	67
What To Do If...	
Helps you to solve any problems that may occur	69
Index	
A comprehensive index	77






Understanding this Manual

Most of your phone's options are accessed through its simple menu system. Before moving on to *Using the Options Menu*, turn to *Menu Navigation* on page 25 to learn the basics of navigating the menu system. When the manual describes your phone's features, it will be assumed that you are familiar with the menu system.

Key Presses

Your phone's keys are represented in this manual with symbols that make it easy for you to find and use the corresponding keys on your phone. A sequence of key presses may be shown as follows:



This sequence indicates that you should first press and release the  key followed by the  key and then the  key.

Entering Information

When you are requested to enter information, such as the number of the phone you wish to call, this is represented in **bold** type. For example:

Phone No. - enter the required telephone number.

PIN - enter your Personal Identification Number.

Unlock Code - enter your unlock code.

Location - enter the Phone Book location number.


Prompts and Messages


When you press a key, your phone will display either an easy-to-understand prompt that guides you to the next step or a simple message that confirms your action is complete. Prompts and messages are represented in this manual in LCD style. For example:


Enter PIN or Completed.


Other Symbols

You will find the following symbols used throughout this manual:

 A Note provides additional information about the option/item.

 A Caution contains important information about the efficient and/or safe usage of your phone.

 This symbol indicates that the feature is a *Personality*[™] feature that can be customized to meet your requirements.

 This symbol indicates a shortcut to access the feature.



Hand-Held Portable PCS Telephone

IMPORTANT

Read this information before using your PCS Telephone.

Exposure To Radio Frequency Signals

Your wireless handheld portable telephone is a low power radio transmitter and receiver. When it is ON, it receives and also sends out radio frequency (RF) signals.

In August, 1996 the Federal Communications Commission (FCC) adopted RF exposure guidelines with safety levels for hand-held wireless phones. Those guidelines are consistent with the safety standards previously set by both U.S. and international standards bodies:

ANSI C95.1 (1992)*

NCRP Report 86 (1986)*

ICNIRP (1996)*

Those standards were based on comprehensive and periodic evaluations of the relevant scientific literature. For example, over 120 scientists, engineers, and physicians from universities, government health agencies, and industry reviewed the available body of research to develop the ANSI Standard (C95.1).

The design of your phone complies with the FCC guidelines (and those standards).

Antenna Care

Use only the supplied or an approved replacement antenna. Unauthorized antennas, modifications, or attachments could damage the phone and may violate FCC regulations.

Phone Operation

NORMAL POSITION: Hold the phone as you would any other telephone with the antenna pointed up and over your shoulder.

TIPS ON EFFICIENT OPERATION: For your phone to operate most efficiently:

- Extend your antenna fully.
- Do not touch the antenna unnecessarily when the phone is in use. Contact with the antenna affects call quality and may cause the phone to operate at a higher power level than otherwise needed.

Batteries

Caution: All batteries can cause property damage, injury or burns if a conductive material, such as jewelry, keys or beaded chains, touches exposed terminals. The material may complete an electrical circuit and become quite hot. To protect against such unwanted current drain, exercise care in handling any charged battery, particularly when placing it inside your pocket, purse or other container with metal objects. Your batteries are packed with a protective battery cover. When the battery is detached from the phone, please use this cover for storing your battery when not in use.

*American National Standard Institute; National Council on Radiation Protection and Measurements; International Commission on Non-Ionizing Radiation Protection

Driving



Check the laws and regulations on the use of PCS and cellular telephones in the areas where you drive. Always obey them. Also, if using the phone while driving, please:

- Give full attention to driving -- driving safely is your first responsibility;
- Use hands-free operation, if available;
- Pull off the road and park before making or answering a call if driving conditions so require.

Electronic Devices

Most modern electronic equipment is shielded from RF energy. However, certain electronic equipment may not be shielded against the RF signals from your wireless phone.

Pacemakers

The Health Industry Manufacturers Association recommends that a minimum separation of six (6") inches be maintained between a handheld wireless phone and a pacemaker to avoid potential interference with the pacemaker. These recommendations are consistent with the independent research by and recommendations of Wireless Technology Research.

Persons with pacemakers:

- Should ALWAYS keep the phone more than six inches from their pacemaker when the phone is turned **ON**;
- Should not carry the phone in a breast pocket;
- Should use the ear opposite the pacemaker to minimize the potential for interference.
- If you have any reason to suspect that interference is taking place, turn your phone **OFF** immediately.

Hearing Aids

Some digital wireless phones may interfere with some hearing aids. In the event of such interference, you may want to consult your hearing aid manufacturer to discuss alternatives.

Other Medical Devices

If you use any other personal medical device, consult the manufacturer of your device to determine if it is adequately shielded from external RF energy. Your physician may be able to assist you in obtaining this information.

Turn your phone **OFF** in health care facilities when any regulations posted in these areas instruct you to do so. Hospitals or health care facilities may be using equipment that could be sensitive to external RF energy.

Vehicles

RF signals may affect improperly installed or inadequately shielded electronic systems in motor vehicles. Check with the manufacturer or its representative regarding your vehicle. You should also consult the manufacturer of any equipment that has been added to your vehicle.

Posted Facilities

Turn your phone **OFF** in any facility where posted notices so require.

Aircraft

FCC regulations prohibit using your phone while in the air.

Switch **OFF** your phone before boarding an aircraft.

Blasting Areas

To avoid interfering with blasting operations, turn your unit **OFF** when in a “blasting area” or in areas posted: “Turn off two-way radio.” Obey all signs and instructions.

Potentially Explosive Atmospheres

Turn your phone **OFF** when in any area with a potentially explosive atmosphere and obey all signs and instructions. Sparks in such areas could cause an explosion or fire resulting in bodily injury or even death.

Areas with a potentially explosive atmosphere are often, but not always, clearly marked. They include fueling areas such as gasoline stations; below deck on boats; fuel or chemical transfer or storage facilities; vehicles using liquefied petroleum gas (such as propane or butane); areas where the air contains chemicals or particles, such as grain, dust, or metal powders; and any other area where you would normally be advised to turn off your vehicle engine.

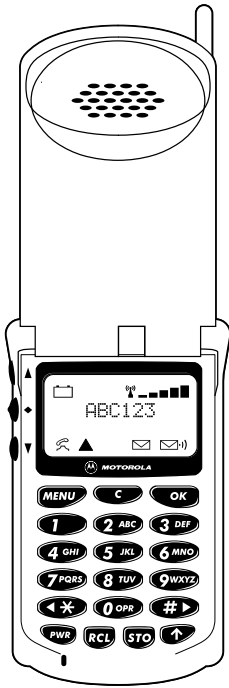
For Vehicles Equipped with an Air Bag

An air bag inflates with great force. **DO NOT** place objects, including both installed or portable wireless equipment, in the area over the air bag or in the air bag deployment area. If in-vehicle wireless equipment is improperly installed and the air bag inflates, serious injury could result.





About Your Phone, Battery, and SIM Card



Special Keys

- PWR** Turns the phone on and off.
- OK** Accepts call, setting, option.
- ↑** Accesses the Quick Access Menu.
- MENU** Accesses the Options Menu.
- C** Rejects call, setting, option.
- ←* #→** Scroll backwards and forwards.
- RCL** Phone Book lookup; retrieves a number from the Phone Book.
- STO** Phone Book entry; adds a number to the Phone Book.

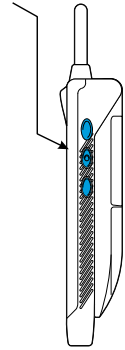
The Smart Button

The Smart Button is on the left hand side of your phone between the volume buttons. Press it to quickly access an alphabetical listing of the entries you have stored in the internal Phone Book.

Volume Buttons

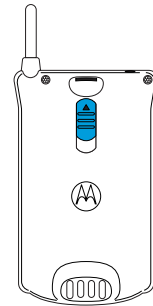
The volume buttons are on the side of your phone left of the display. Press them in standby mode or on a call to adjust the keypad and earpiece volume. Or, press first to adjust the ringer volume. The upper button increases the volume and the lower button decreases it.

The volume buttons can also be used to scroll through the Phone Book entries after pressing the Smart Button.



SIM Card Release

The SIM card release button is on the back of your phone. To remove the SIM card, slide this button down toward the base of the phone and pull the SIM card out.



The Display



The Liquid Crystal Display (LCD) on your phone shows alphanumeric characters (up to 2 rows of 12 characters) and informative symbols.

The various elements of the display are as follow:

ABC123

Characters are used to display messages and telephone numbers.



Battery Charge Indicator Flashes when the battery level is low or the battery is charging.



Signal Strength The more segments displayed in the bar graph, the better the signal strength.



In Use Displayed when a call is in progress.



Roam Displayed when you are registered on a system other than your home system.



Short Message Service* Displayed when the phone has received a new message. The symbol will flash when your message storage area is full.



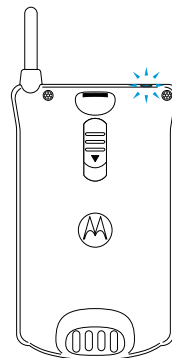
Voicemail* Displayed when you have a new message in your voice mailbox.

**Network dependent features.*

Low Temperature Use

The liquid crystal display in your phone behaves differently at extremely low temperatures. The display may respond slowly to key presses; this is normal and does not affect the phone operation in any way.

The Power/Status Indicator



When your phone is closed, the power/status indicator on the top of the phone provides you with the following information:

Incoming Call	Alternate Red/Green
In Service	Flashing Green
No Service	Flashing Red
Roaming	Flashing Yellow

Care and Storage


- Never leave your phone or battery in extreme temperatures (over 60°C), for example, behind glass in very hot, direct sunlight.
- To clean your phone, use a moistened or antistatic cloth. Do **not** use a dry or electrostatically charged cloth.
- To prolong the life of your batteries, avoid exposing them to temperatures below -10°C (14°F) or above 45°C (113°F).

Please note that exposing Lithium Ion batteries to prolonged elevated temperatures, such as those that can develop in an enclosed vehicle, may permanently degrade battery performance.

Your Battery

Charging a New Battery

To ensure maximum battery performance, a new battery (or battery that has not been used for several months) should be charged for about 3-4 hours before use.

 A new NiMH battery may require several full charge/discharge cycles in order to achieve its optimum performance.


After this initial charge, you can recharge your battery at your convenience, using the phone's rapid travel charger.

 See the chart on page 15 for charge times.

Important Battery Information

To ensure that you enjoy maximum battery life and use your battery to its fullest capacity:

- Always use *Motorola* approved battery chargers.
- For the best results, Li-Ion batteries should be charged using the E•P Desktop Charger, or your phone's internal charger.
- The battery should be at or near room temperature when charging.
- When not in use, store your battery uncharged in a cool, dark and dry place.

 Do not leave a NiMH battery connected to any charger for longer than 24 hours.

Handling Batteries

Your new batteries are fitted with protective covers. These covers must be removed before the battery can be used. Save the covers to carry and store batteries which are not in use. Covers prevent electrically conductive objects from making contact with the battery terminals, thereby reducing the risk of injury or damage from a battery short circuit.

Removing the Main Battery Cover

- 1 Press and hold the release latch.
- 2 Press the battery upwards, out of its cover.

Fitting the Main Battery Cover

- 1 Lower the side of the battery opposite the release latch into the cover.
- 2 Lower the side of the battery with the release latch into the cover until the latch clicks into place.

Removing the Auxiliary Battery Cover

- 1 Hold the battery securely with one hand.
- 2 With the thumb of your other hand, press the base of the cover upwards. Continue this action until the cover slides free from the pins on the bottom of the battery.
- 3 Swing the cover away, clear of the battery.

Fitting the Auxiliary Battery Cover

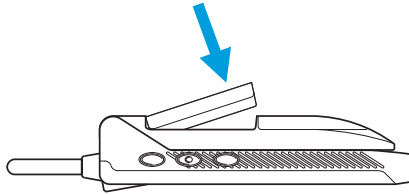
- 1 Slide the narrow end of the cover into the small grooved hook on the top of the battery.
- 2 Push the cover firmly upwards until the base of the cover slides past the battery pins; then release.



Fitting a Battery to Your Phone

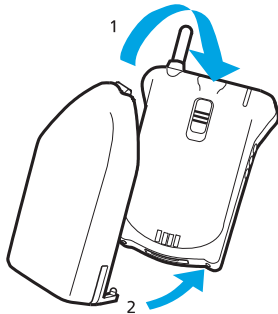
Fitting a Main Battery

Position the battery as illustrated in the following diagram, and snap-lock it into place.



Fitting an Auxiliary Battery

- 1 Place the hook on the battery into the slot on the back of the phone.
- 2 Pull the battery towards the bottom of the phone until the two pins click into place.



Removing a Battery from Your Phone

Removing a Main Battery

To remove a main battery, press the battery release latch and lift the battery out, away from the phone.

Removing an Auxiliary Battery

To remove an auxiliary battery, slide the battery down until the two pins are released from the base of the phone, and then lift the battery off.

Battery Performance and Maintenance

Your phone may have come with one or more of the following battery types. The part numbers listed are for charcoal batteries. The talk-time and standby-times given are typical performance figures:

Battery Type	Part Number	Talk-Time ^a up to:	Standby-Time ^b up to:
Slim Main 500 mAh Li-Ion	SNN 4810	135-165 min.	39-48 hours
Extra Cap Main 900 mAh Li-Ion	SNN 4815	250-310 min.	72-88 hours
Standard Main 500 mAh NiMH	SNN 4905	135-165 min.	39-48 hours
Slim Aux 900 mAh Li-Ion	SNN 4868	220-275 min.	65-78 hours


a. Talk-times are specified for with and without DTX.

b. All times are approximate and depend on network, signal strength and features selected. Standby-times are specified for DRX=2 to DRX=9.

- With two batteries attached, total talk- and standby-time available is the sum of both main and auxiliary battery times.
- Best battery performance will be achieved when you regularly charge and discharge batteries as instructed in this manual.
- Set **Battery Saving Mode** to On (see *Phone Setup Menu* on page 49) and/or **Frequency of Search** to Slow or Medium (see *Network Selection Menu* on page 54) to extend the life of the battery between charges.
- Keep the antenna fully extended whenever possible to ensure maximum signal strength.
- Expected life of a battery is about 300-500 charge/discharge cycles.
- If left unused, a fully charged battery will discharge itself, at about 1-2% per day, on average.

Low Battery Warning

When the battery level is low and only a few minutes of talk-time remain, your phone will alert you in three ways:

- A warning signal (two double beeps) will sound
- The battery symbol  will begin to flash slowly
- **Low Battery** will be displayed

When the battery is completely discharged, your phone will turn off. Simply install a fresh battery or recharge the exhausted battery to begin using your phone again.

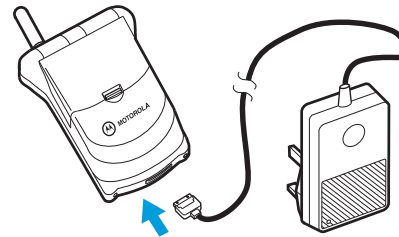
If you have an auxiliary battery fitted, it is used before the main battery. A tone sounds when changing to the main battery.

Charging Your Battery Using the Power Adapter

The power adapter can be connected directly to your phone for convenient rapid battery charging. It will charge the batteries fitted to your phone, charging the main battery first to 95% capacity, then switching to charge the auxiliary battery (if attached).

To charge:

- 1 Fit one or two batteries onto your phone.
- 2 Snap in AC plug into the top of the power adapter.
- 3 Plug the power adapter to the phone.



- 4 Insert the power adapter plug into a 110V AC electrical outlet. A beep-tone sounds and the battery icon flashes when charging begins.

 *Your phone can be either on or off during charging.*

The state of charging is monitored and displayed by your phone.



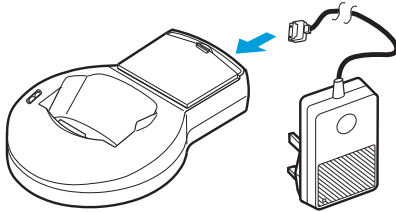
Desktop Charging Your Battery

The Desktop Charger can charge up to 3 batteries – 2 fitted to the phone, and an additional spare battery in the charger's rear pocket. Batteries will be charged in the following order:

- phone's main battery
- phone's aux battery
- rear pocket battery

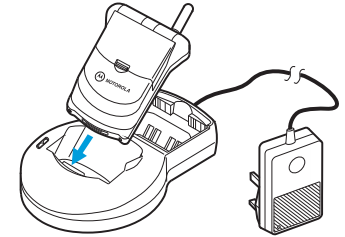
Desktop Charger Power Supply

- 1 Plug the power adapter to the desktop charger socket.
- 2 Plug the power adapter into a 110V AC electrical outlet.

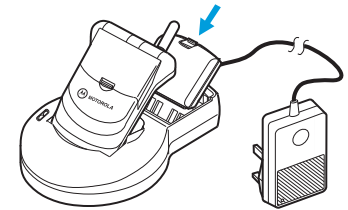


Loading the Desktop Charger

Insert your phone into the desktop charger as shown, with either one or 2 batteries fitted on the phone.



If desired, insert a spare battery (main or aux) into the desktop charger as shown.





Charge Times

Typical charge times for achieving a 95% charge level using the power adapter or desk charger are:

Battery Type	Part Number*	Charge Time
Slim Main 500 mAh Li-Ion	SNN 4810	2.5 hours
Extra Cap Main 900 mAh Li-Ion	SNN 4815	2.5 hours
Standard Main 500 mAh NiMH	SNN 4905	70 min.
Slim Aux 900 mAh Li-Ion	SNN 4868	2.5 hours

*Part numbers listed are for charcoal batteries.

 The batteries will continue to slow charge until fully charged.

 It is normal for batteries to become warm during charging.

Using Your Phone While Charging



Your phone can be left on in standby mode while charging. It is important to note that charge times will increase if you make or receive phone calls while charging.

Battery Disposal

To dispose of batteries, look for your local battery recycling center.

 Never dispose of batteries in fire.

Battery Meter Indicators

The battery meter displays different messages depending on the batteries attached, and whether or not there is an external power source. Press   to quickly check the battery status.

Not Available	No battery fitted; the phone is operating from external power.
Battery	Only one battery fitted; the phone is operating from this battery.
Aux Battery	Auxiliary and main batteries fitted; the phone is operating from the auxiliary battery.
Main Battery	Auxiliary and main batteries fitted; the phone is operating from the main battery.
Charging Battery	Only one battery fitted; this battery is being charged.
Charging Aux Battery	Auxiliary and main batteries fitted; the auxiliary battery is being charged.
Charging Main Battery	Auxiliary and main batteries fitted; the main battery is being charged.
Fast Charge Complete	All conditions; fast charging is complete.



Your SIM Card



Your credit card sized SIM (Subscriber Identity Module) card is supplied by your Service Provider when you buy your phone. You will not be able to make or receive calls without a SIM card inserted in your phone.

📞 Some networks allow you to make 911 emergency calls without a SIM card inserted.

The SIM card is a 'Smart Card' that contains your phone number and service details, as well as memory for storing messages and Phone Book entries. You can therefore use your SIM card in any PCS phone to make or receive calls, or access message services to which you subscribe, and charges will be applied to your PCS account.

Like a bank or credit card, you should keep your SIM card secure. Do not bend or scratch your card and avoid exposure to static electricity or water.

📞 The use of a plug-in SIM card or small SIM card adapter is not covered under warranty.

⚠️ Switch off your phone before inserting or removing the SIM card. Failure to do so may damage the memory on your SIM card.

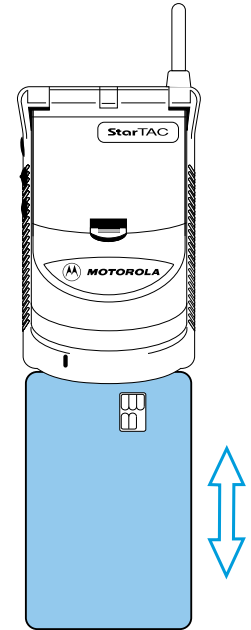
SIM Card Insertion

Switch off your phone by pressing **⏻** and insert the SIM card as shown. If the SIM card is inserted the wrong way or damaged, the **Check Card** message will be displayed. Remove the SIM card, then properly re-insert it into the phone.

If either of the **Bad Card See Supplier** or **Blocked See Supplier** messages are displayed, contact your Service Provider.

SIM Card Removal

Switch off your phone and push the release button, on the back of the phone, toward the base. Pull the SIM card out.



Making and Receiving Phone Calls

Switching the Phone On and Off

To switch the phone on or off, press the **POWER** key.

If the phone displays **Insert Card**, there is no SIM card inserted. Once inserted, the phone will check that the SIM card is valid.

One of the following messages may appear:

- **Enter PIN** - a request to enter the SIM card PIN code (if required).
- **Enter Phone Unlock Code** - a request to enter the phone unlock code (if required).
- **Searching...** followed by a network name - as the phone finds a suitable network to connect to.

Entering Your SIM Card PIN Code

To enter the PIN code, enter **PIN Code** **OK**.

As you type in each digit of the PIN code, a * character will be displayed.

If you make a mistake, press **C** to remove the last digit.

Holding **C** down will remove the entire entry.

When the PIN code is complete, press **OK**.

If the PIN code is incorrect, the message **Wrong PIN** will be displayed, followed by **Enter PIN**.

! *If an incorrect PIN number is entered three times consecutively, your phone will automatically lock up and the **Blocked** message will be displayed. See 'Unblocking Your Phone' on page 51 for details on unblocking.*

To change the PIN code, see 'Change SIM PIN Code' on page 51 in the *Using the Options Menu* section.

OK Entering Your Phone Unlock Code

If your phone displays the message **Enter Phone Unlock Code**, you must enter your unlocking code by entering **Unlock Code** **OK**.


The phone unlock code is a four-digit number, initially set to **1234**. To change the code, see 'Change Unlock Code' on page 50 in the *Using the Options Menu* section.

If you forget your unlock code, press **MENU** repeatedly until the display reads **Change Unlock Code**. Press **OK** **Security Code**, enter a new unlock code, and press **OK**.





Making a Phone Call

To make a phone call, your phone must be switched on, unlocked and have the antenna fully extended.


It will not be possible to make a phone call unless you are in an area where there is PCS service. When service has been found, a series of rising bars, , will show the signal strength.




There are a number of ways to make a phone call:


- Using the digit keys
- Using automatic redial
- Dialing numbers from the Phone Book
 - One-Touch Dialing one of the first nine memory locations
 - Recalling an entry by location number
 - Using the dedicated Recall  key
 - Using the Options Menu
 - Recalling an entry by name
 - Using the Smart Button
 - Using the Options Menu
 - Recalling one of the last ten numbers called or received
- Calling an embedded number in a message

 Your phone contains a Phone Book that can be used to store names and telephone numbers. See *What is the Phone Book?* on page 31 for further details.

Keypad Digits

The simplest method of making a phone call is to enter the number using the digit keys, then press .


 If you make a mistake, press and release  to remove the last digit. Holding  down will remove the entire number.

The display will show **Calling** when the call is being made. If there is no answer, press , or close the phone to end the call.

When the call is answered, the display will change to **Connected** for a few seconds, followed by **End Call?**

To end your call, press  or close the phone.

Automatic Redial

If your call attempt does not succeed, the message **Redial?** will be displayed for five seconds. Pressing  at this point will automatically redial the phone number.

When the call is answered, you will hear a short ring tone.

The maximum number of redial attempts is set by your Service Provider. If the phone call cannot be connected within this maximum, the message **Redial Failed** will be shown.



Phone Book Dialing

OK One-Touch

To quickly retrieve and dial a number stored in the first nine locations of your Phone Book*, press and hold the appropriate digit key. For example, pressing and holding **2 ABC** will dial the number stored in location 2 of your Phone Book.

*☞ You do not need to press **OK** to call the number.*

By Location

1 Press **RCL** and a location number. For example **RCL 2 ABC 3 DEF** will retrieve the number stored in location 23 of the Phone Book.

*If you don't know the exact location, enter a random location and then use **◀*** and **#▶** to scroll to the number. Location numbers can range from 1 to 255.*

2 Press **OK** to call the number.

☞ Enter the full 3-digit location number for maximum search speed (e.g. 001 for location 1).

By Name

You can also dial a number in the Phone Book associated with a name entry.


1 Press the Smart Button.

2 Scroll through the alphabetically-listed names using the upper or lower volume buttons or **◀*** and **#▶**. Or, press a digit key (2-9) to go directly to the first corresponding alpha entry (i.e. press **5 JKL** to go to entries beginning with J). To return to the first entry, press the Smart Button again.

3 Press **OK** to call the number of the selected name.

*The Phone Book entries that you are able to access will depend on the One-Touch Dial Setting option in the Phone Book menu.

Last Number Called

 When in standby mode, press **OK OK**

Alternatively, you can retrieve the last number dialed using **Last Ten Calls** in the Phone Book menu.

Calling an Embedded Number in a Message

See 'Return Call' on page 46 for details on how to call a number embedded in a message.

International Phone Calls

To make an international phone call, press and hold **0 OPP**. After a few seconds, the international dialing prefix + will appear in the display; this allows you to call from any country without knowing the local international access code.

Now enter the country code, followed by the phone number. The country code follows the conventional format, 49 for Germany, 44 for the UK, 46 for Sweden, etc.

Just like a conventional international call, remove the leading '0' of the area code when you dial.

Inserting Pauses Into Phone Numbers

When you call automated systems, a recorded message prompts you for PIN numbers, account numbers, etc. You can store these numbers in the same memory location as the automated system's access number. Just separate the numbers with "pauses"—special characters that tell your phone to wait before sending additional numbers—and store or dial the string in the same way you would other numbers.

To insert a pause, just press and hold **◀*** for a couple of seconds. You will see the pause symbol **▣**.



Pauses tell your phone to wait for three seconds before sending the next string of numbers. Your phone will not begin the three second delay for the first pause until the call is answered.

Pause - A Working Example.



If you had a tone-based voicemail system with an access number of 555-6911, a mailbox number of 1066, and a password of 2001, you could enter the following:

5556911=1066=2001 .

Your phone would dial 5556911. When the call was answered, your phone would wait three seconds before sending the tones for 1066 to select the mailbox.

After another pause of three seconds, your phone would send the tones for the password 2001.




Phone Mute

You can activate or deactivate the phone mute feature by pressing the  key during a call. Scroll to the **Turn Mute On** or **Off** item and press .


PCS Emergency Calls

When you dial 911, your phone will automatically send an emergency message to your PCS network. Keep in mind that you must be within a PCS network coverage area. If allowed by the Service Provider, the emergency message can be sent with or without a SIM card inserted into the phone and regardless of any security code settings.

Please check with your network operator for further information regarding emergency dialing services.

To dial the PCS emergency number, press    .

While the emergency call is being made and connected, the display will show **Emergency**.

 You may also be able to dial 112, the international emergency number, to place emergency calls.



Receiving a Phone Call

To receive a phone call:

- Your phone must be switched on and unlocked.
- You must be in an area where there is PCS service.
- Your Call Forwarding and Call Barring settings should not be set to forward or bar incoming calls.

When your phone receives a call, it will ring or vibrate. To answer a call, extend the antenna, then open the phone.

If you wish to open the phone without answering calls, set **Key Answer Only** to **On**. Then, if your network offers Caller Line Identification and you are a subscriber, you can open your phone to review the number or name of the caller before you answer. To answer a call with Key Answer Only activated, press **OK**, **1** through **9wxyz**, or **#▶**. To reject the call, press **C**.

Your phone automatically searches your Phone Book for the caller's number. If the number matches an entry in your Phone Book, the name associated with the number is displayed instead.

To answer the call, press **OK**. If **Key Answer Only** is active, you can also press **1** through **9wxyz** or **#▶**.

If your phone is open and you do not want to answer the call, you can:

- Press and release **C**.

The caller is either sent to a forwarding number (see 'Detailed Forwarding' on page 40) or hears a busy tone.

or

- Press and hold **C**. This will reject the incoming call. No call forwarding option will be offered in this case.

If your phone rings and you do not answer it, the message **Unanswered Call** will be displayed the next time you open the phone, so that you know someone tried to call you.

If you subscribe to CLI, you can view the names or numbers of your unanswered calls in the Last 10 Calls Received list.


Ending a Phone Call

To end a phone call, press **OK** or close the phone.



Conference Calling

With conference calling, you can join up to five other parties to create a group call.

 *Conference calling is a network feature. Please contact your Service Provider for availability information.*



Setting Up a Conference Call

To set up a conference call, place or receive a call as you normally would. Once the call is established, press **MENU** and scroll to **Make New Call**. Press **OK** to select.

You will then be prompted for the phone number of the next party. You can either enter the number with the keypad or recall a number from your Phone Book via the Quick Access Menu.


The original call will be placed on hold automatically while you make the new call. Once the new call is established, you can join the calls by pressing **MENU** and selecting **Conference Call**.

You may also add incoming calls by answering Call Waiting and selecting **Conference Call** as described above.

Simply repeat these steps to include additional calls.

Separating Out Individual Calls

If you need to speak with an individual caller privately, you can isolate one call from the conference call.

 *In order to separate a call from the group, there must not be any calls already on hold.*

To isolate the call, press **MENU** and select **Split Call**. You will then be able to scroll through the phone numbers of all the members of the conference call. If you have stored any of the numbers in your Phone Book, the name will also appear. Once you find the caller to isolate, press **OK**.

To re-join the group, select **Conference Call** again.

Ending the Call

Close the phone to end all calls simultaneously.

Press **MENU** then scroll to either **End Active Call** to disconnect your live call or **End Held Call** to disconnect whoever is on hold, whether an individual or the remaining group.

Data and Fax Calls

In addition to voice calls, your phone can also make data and fax calls when connected to a data peripheral device with a *Motorola* CELLect™ PCMCIA card and a StarTAC™ data cable.

Please check with your local retailer or dealer for full details of data and fax services.

Security Features

You may find that you are prompted to enter certain security or access codes before you can use your phone or some of its features. These codes are:

- PIN Code (SIM card PIN code).
Prevents access to your SIM card. The number is supplied by your Service Provider. Your SIM card will be blocked if three unsuccessful attempts to enter this number are made.
- PIN2 Code.
Prevents access to certain advanced features. The number is supplied by your Service Provider.
- Phone Unlock Code.
Protects your phone from unauthorized use. The default code set by Motorola is 1234.
- Unblock Code.
Unblocks your SIM card if it has been blocked by three unsuccessful attempts to enter the PIN code. The number is supplied by your Service Provider.
- Security Code.
Prevents access to security features. The default code set by Motorola is 000000.





Menu Navigation

Introduction to Menus


Many of your phone's options are accessed by using menus that have methods in common for selection, change, and cancellation.

Please read this section carefully before moving on to *Using the Options Menu*. When you understand the common approach to menu navigation and how the menus are shown on the page, you will be able to access and change options with ease.

The menus described here can only be accessed when the phone is in standby mode. Menu operation is not possible when you are making or answering a phone call.



Entering the Menus




Two keys are used to access the two menus:

 enters the Options Menu

 enters the Quick Access Menu

Leaving the Menus


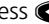

To exit any of the menus, you can either press and hold  or repeatedly press . Both of these actions will return your phone to the standby mode.

 A quick way to leave the menus is to press  .




Menus and Sub-Menus


The menu system is a list with multiple levels. You begin in the upper menu and, by making choices, move down into the submenu. When you choose a submenu, you limit your access to the options found in that submenu. To return to the choices in the upper menu, you'll need to exit the submenu. Learning just a couple simple buttons will enable you to move freely through the entire menu system.

Moving to and Selecting a Menu Option

Press  to scroll forward and press  to scroll backwards through options on one level. Press  when you find the option you want.

Your phone will respond in one of three ways:

- Either a brief message will be displayed confirming an action, for example, *Completed*
- Or a prompt will be displayed requesting you to enter information, for example, *Enter PIN* or *Enter Name*
- Or the first option of a sub-menu will be displayed. You can select this option using  or browse through the other options using  and .

Press  to exit an option or submenu. If you exit a menu option, you'll return to the menu option select screen; if you exit a submenu, you'll return to the upper menu.

Menu Options with Security Codes

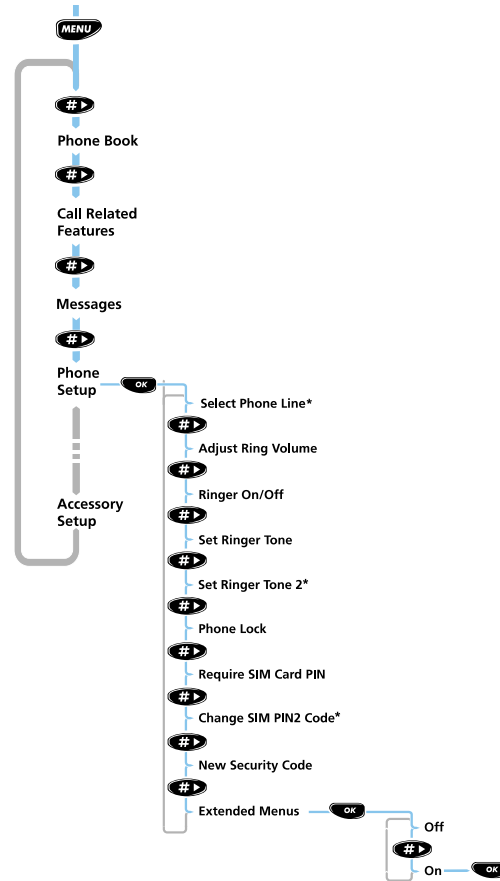
Some options require a security code to safeguard against misuse. Just enter the requested code to gain access to the protected option.



Menu Navigation - A Working Example

As an example of Menu Navigation, try the following sequence to turn **Extended Menus On** or **Off**:

- 1 Make sure the phone is in standby mode so the Options Menu is accessible.
- 2 Press **MENU**. This will display **Menu Options**.
- 3 Press **#>** repeatedly until **Phone Setup** appears.
- 4 Press **OK** to select the sub-menu.
- 5 Press **#>** repeatedly until **Extended Menu** appears.
- 6 Press **OK** to select this item. You can now select between **On** or **Off**. The current setting will be shown with a **>** character.
- 7 If **>** is next to **Off**, press **#>** and then **OK** to switch on the Extended Menus.
or
If **>** is next to **On**, press **C** to leave the setting as it is.



* Network dependent features.

OK *Short, Extended, and Personalized Menus*

With the *Personality*TM interface, you can personalize your phone's menus by choosing which features you want readily available. Remove from the short menu the options that you don't use often, then turn Extended Menus **Off** to hide all but the short menu options. That way, the menu options that you frequently use will be all the more accessible.

The menu diagrams in this manual show the menu setup when you first receive your phone.

- The default short menu items are shown in the charts at the beginning of each section in **bold** type.
- The default extended menu items are shown in the charts at the beginning of each section in *italics*.

Moving an option from the extended menu to the short menu (or vice versa) is easy. Just locate the option that you want to move, then press and hold **OK** until a prompt appears offering the following choices:


For items in the short menu:

- Remove From Short Menu
- Leave in Short Menu

For items in the long (extended) menu:

- Add To Short Menu
- Leave in Long Menu

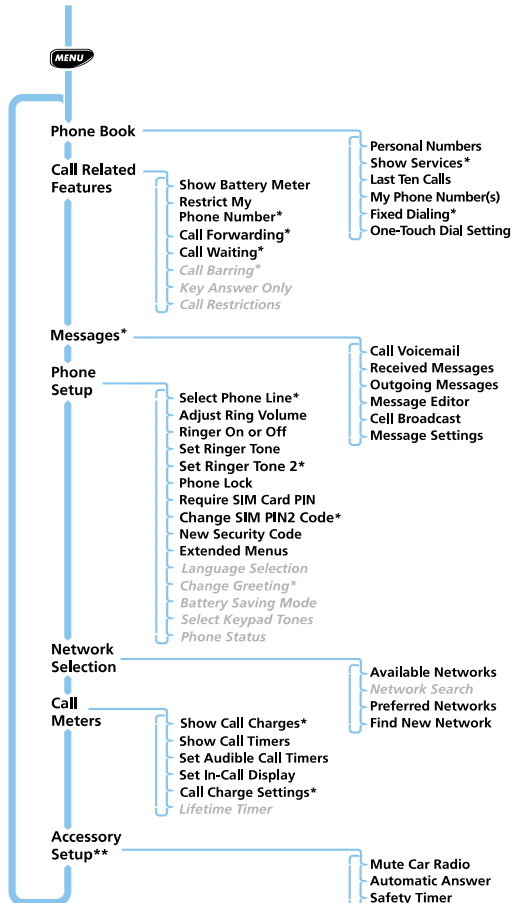
Select the option you want by pressing **OK** when it is displayed.

 *The settings for some menu options cannot be changed.*





Using the Options Menu



Scrolls down (forwards) through the menu list.



Scrolls up (backwards) through the menu list.



Selects the submenu, or accepts an option.



Reverts to the parent menu, or cancels an option.

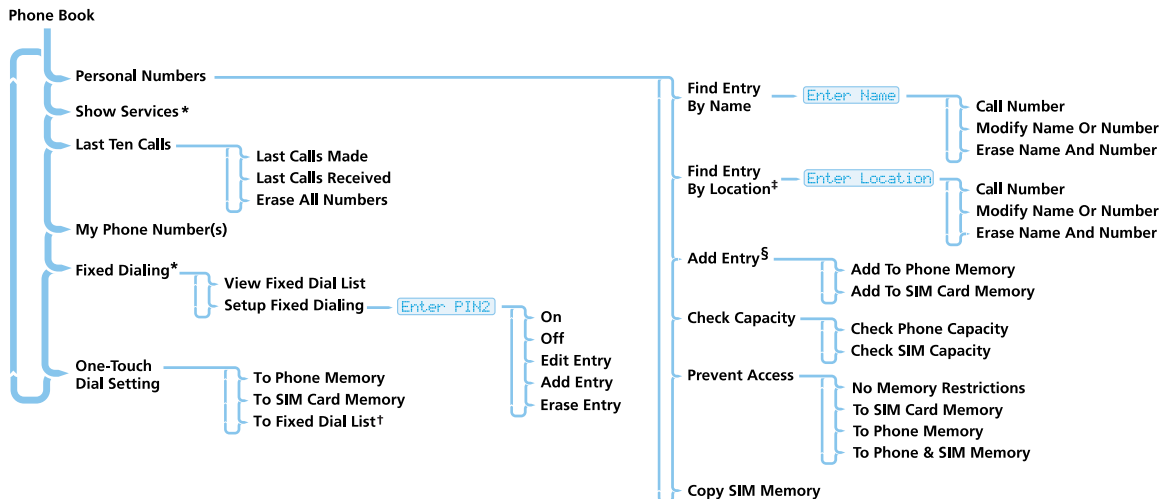


Once in the Options Menu, **MENU** can be used as an alternative to **#** to scroll forward through menu options.

Items shown in *italics* are available only when **Extended Menu** are switched on.

- * Network dependent features.
- ‡ The features and the positions of the features in the Quick Access Menu can be changed.
- ** The **Accessory Setup** option is available only when a car kit is fitted.

The Phone Book Menu



Menu Navigation



§ Pressing **STO** automatically routes you to the 'Add Entry' submenu.

‡ Pressing **RCL** followed by an entry location allows you to quickly retrieve and dial a number.

* Network dependent feature.



What is the Phone Book?






You can store names along with telephone numbers in your phone's internal Phone Book. Each entry is stored in a memory location in the Personal Numbers list of your phone's or SIM card's memory. Once stored, a number can be quickly retrieved by either memory location or name.




Your Phone Book storage capacity is as follows:

	Phone Memory	SIM Card Memory*
Personal numbers	100 entries	Up to 155 entries
Fixed dial numbers	None	20 entries
Phone number digits	32	20
Name characters	16	10-50
Locations	1-100	101-255

*SIM card capacity varies depending on the service provider.


To access your Phone Book in alphabetical order, press the Smart Button, then use the volume keys or  and  to scroll through the entries.


To access the Phone Book menu options, press  twice. You will see **Phone Book**. Press  to enter the Phone Book menu, then use  and  to scroll to the Phone Book menu option or submenu that you wish to use and press  select it.


 You can also access many of the Phone Book functions with the Quick Access Menu or dedicated Store  and Recall  keys.

Postscripting

If you call many different numbers in the same area code, you may want to make use of postscripting. You can save time dialing by storing the frequently used prefix into the internal Phone Book. If you attach a descriptive name to the prefix, it will be easy to find the right area code or prefix.

To use postscripting, first save the prefix in your Phone Book. See 'Add To Phone Memory, Add To SIM Card Memory' on page 34. Then just select the location containing the prefix, enter the remainder of the number, and press  to place the call.

You can also use postscripting to quickly modify a Phone Book entry to a similar number. Just retrieve the entry from the Phone Book, delete the unwanted digits, enter the replacement digit, then press  to place the call.

 *Postscripting a number does not overwrite the entry in the Phone Book.*



How to Enter Alphabetic Characters

When you see the prompt **Enter Name** or when you are creating or editing an SMS message, you can use the digit keys, **0 OPB** through **9 WXYZ**, to produce any character in the alphabet and various symbols for punctuation.

For example, the **5 JKL** key can produce **J**, **k**, **l** or **5**. One press of **5 JKL** creates a **J**. A second press produces a **k**. Another press will display **L**, and another will display **5**. Your phone will continue to scroll through the characters available on the selected key with each new key press.

A long press of any of the keys will switch all characters to lower case. A second long press will switch them back to upper case.

To enter the next character press the appropriate key. If, however, the next character is on the same key as the previous character you will first need to press **#▶**. Pressing **#▶** a second time will produce a space.

If you make a mistake, you can go back to the incorrect character by pressing **◀✖**.

Characters can be removed from the display by pressing **◀C**.

The character before the cursor (▣) is the character which will be deleted.

Press **OK** to store the information.

Available Characters

Press the appropriate keys to get the following characters:

1	1 Space . ? ! , @ _ & : " () ' % # & i 1 Space . ? ! , @ _ & : " () ' % # & i
2 ABC	A B C 2 à ç a b c 2 à ç
3 DEF	D E F 3 é è d e f 3 é è
4 GHJ	G H I 4 i g h i 4 i
5 JKL	J K L 5 j k l 5
6 MNO	M N O 6 ñ ò m n o 6 ñ ò
7 PQRS	P Q R S 7 p q r s 7
8 TUV	T U V 8 ù ú t u v 8 ù ú
9 WXYZ	W X Y Z 9 w x y z 9
0 OPB	0+ - x * / = > < # 0+ - x * / = > < #

The top line for each key shows the upper case characters. The lower line shows the lower case.



Personal Numbers

The Personal Numbers submenu is used for creating and managing your list of personal numbers.

Find Entry By Name

Press Smart Button


This option is used to select a phone number from a list of alphabetically sorted Phone Book names.

 *The Smart Button will automatically display an alphabetic list of Phone Book entries. Either scroll through the list with the volume keys or press a number key (2-9) to go directly to entries starting with the letter shown on the key. For example, press  to go to entries beginning with 'J.'*




Once selected through the menu, this option will display **Enter Name**. You can enter the first three characters of a name. You do not need to enter all three characters, but a longer entry will result in a more accurate search.



The Phone Book entries will be searched and the first matching entry will be displayed.

If there isn't a name matching your entry, the nearest matching entry will be displayed.

If you do not enter any name information but press , the first alphabetical entry will be displayed.

If there are no entries, **No Names Stored** will be displayed.

To scroll to adjacent Phone Book entries, press  and , then press  to select the displayed entry. Once selected, the phone enters the **Call Number, Modify Name Or Number** or **Erase Name And Number** submenu for that entry.

 *When using the Smart Button to find an entry by name, pressing  will automatically dial the number and you will not enter the submenu.*

Find Entry By Location

Press Location

This option is used to select a phone number from a list of numerically sorted Phone Book locations.




Once selected in the menu, this option will display the message **Enter Location**. You can now enter a location number. If the entered location is not valid, a timed message **Range 1-XXX** will be displayed and the phone will return to **Enter Location**.




The Phone Book entries will be searched and an entry will be displayed.

If you enter a location number for which there is no entry, **Location XX is empty** will be displayed and the next largest non-empty location will be displayed instead.

If you do not enter a location, the first numerical entry will be displayed.

If there are no numbers stored, **No Numbers Stored** will be displayed.

To scroll to adjacent Phone Book entries, press  and , then press  to select the displayed entry. Once selected, the phone enters the **Call Number, Modify Name Or Number** or **Erase Name And Number** submenu for that entry.

 *When using the  key, you must enter a location number. After the search, pressing  will automatically dial the number and you will not enter the submenu.*

Call Number, Modify Name Or Number or Erase Name And Number Options

Once a Phone Book entry has been selected, it can be called, modified, or deleted.

Call Number


This option is used to call the selected Phone Book telephone number.

Modify Name Or Number

This option is used to change the selected Phone Book entry. The entry's current telephone number and name will be presented in turn for modification. You can accept the current settings or modify as required.

Erase Name And Number

This option is used to erase the selected Phone Book entry.



Simply press  when the phone displays the message **Erase Name And Number**. The option will display the timed message **Erased XXX** and then return to **Find Entry**.



Add Entry


This option is used to add (store) entries to the Phone Book. You can choose to add the new entry to either the phone or SIM card memory locations.



Add To Phone Memory, Add To SIM Card Memory

 Press  to enter **Add Entry** submenu


Press  and  to select either **Add To Phone Memory** or **Add To SIM Memory**.

Once you have selected the destination, you will be prompted with the message **Enter Number**. Enter the number to be stored and press . You will then be asked to enter a name. Press  to confirm your entry. Finally, you will be asked to enter a memory location.

 *The last telephone number displayed will be presented by default; it can be used or discarded as required.*

 *To discard a number, press and hold .*

If the entered location is not valid, a timed message **Range YYY-ZZZ** will be displayed and the phone will return to the **Enter Location** prompt. If the chosen location is currently used by another entry, you will be asked for confirmation that the location can be overwritten.

If you do not supply a location number but press , the next available location will be used.

When the new entry has been entered, a timed message **Stored XXX** will be displayed and the phone will return to the submenu of **Add Entry**.

Check Capacity

This option is used to check the number of unoccupied Phone Book entries in the phone or SIM card memory areas.

Check Phone Capacity, Check SIM Capacity

Once selected, a timed message **XX Unused Locations** displays the requested information.

Prevent Access

This option enables you to prevent access to the Personal Numbers list.

To SIM Card Memory, To Phone Memory, To Phone & SIM Memory, No Memory Restrictions

You can prevent access to all entries in the SIM card memory, the phone memory or both the phone and SIM card memory. To cancel all access restrictions, select **No Memory Restrictions**.

When you change the restrictions, you will be requested to enter the Security Code before the change is made.

Copy SIM Memory

This option is used to copy the Phone Book memory of one SIM card to another in the event you change cards. Follow the phone prompts to copy a SIM card's memory.


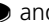


Show Services

Allows you to view and dial numbers from a list created by your Service Provider.

Show Services may not be available in all areas. Contact your Service Provider for details.

Last Ten Calls

These options can be used to call the most recently used phone numbers.

Once an option has been selected, use   and  to scroll through the list of phone numbers. Press  to call the displayed number.

You can use postscripting to modify a number once you have retrieved it from either of the Last Ten Calls lists.

Last Calls Made

 Press  and   or  

This option can be used to redial the phone number of any one of the last ten calls made.

Last Calls Received

 Press   to enter the list

This option can be used to redial the phone number of any one of the last ten calls received.




*You will only see numbers in the Last Calls Received list if you have Caller Line Identification.**

Erase All Numbers

This option erases all the numbers stored in your Last Ten Calls Made and Last Ten Calls Received lists.


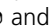


*Caller Line Identification is a network dependent feature.



My Phone Number(s)


 Press   to display your phone number

This option allows you to access your phone, fax, and data numbers so that you can retrieve or modify them when required.


The My Phone Number(s) list is stored on your SIM card.

When you select this item, the first location will be displayed. Use   and   to scroll through the phone numbers stored.

To enter or change a number, scroll to the location and press . You will be prompted to enter a phone number and then a name (10 characters maximum). Press  to store the information.


 Depending on your Service Provider, you may find that one or more of the entries in the My Phone Number(s) list is defined. You may not be able to change these predefined entries.

Fixed Dialing

 Availability of the Fixed Dialing menu is dependent on your Service Provider and on the type of SIM card.

This feature allows you to limit use (typically third-party use) of your phone to a predefined list of phone numbers or, if you wish, to a list of country codes, area codes, other prefixes or exchanges of your choosing.


When Fixed Dialing is switched on, the only numbers that can be dialed from your phone are those stored (or whose prefix is stored) in the Fixed Dial list. If you attempt to dial any other number (apart from an emergency number), the message **Restricted** will be displayed. You will not be able to make fax or data calls.

To make a call when Fixed Dialing is switched on, either dial the number manually, or select it from the Fixed Dial list and press .

Up to 20 entries can be stored in the Fixed Dial list. The list is stored on your SIM card.

 This option may be affected by the Call Barring setting.

View Fixed Dial List

This option allows you to scroll through the numbers in the Fixed Dial list. When you find the number you want, press  to make the call.

Setup Fixed Dialing

This option allows you to switch Fixed Dialing on or off and to enter or change entries in the Fixed Dial list.

You will be prompted to enter your PIN2 security code when you select this option.

On

Switches Fixed Dialing on.

Off

Switches Fixed Dialing off.

Edit Entry

Modifies or clears an entry in the Fixed Dial list. When you select this option, the first non-empty location in the list will be displayed. Scroll to the entry you want to change and press **OK**. You will be prompted to edit the phone number and the name. To erase the entry, press **C**.

Add Entry

Adds a phone number and name to the Fixed Dial list. When you select this option you will be prompted to enter the phone number, name, and a location number. If you do not specify a location number, the entry will be stored in the next available location.

When setting up your Fixed Dial list, you may want to reserve the first nine locations for phone numbers you wish to One-Touch Dial. See also 'One-Touch Dial Setting' on page 37.

Erase Entry

Erases a phone number and name from the Fixed Dial list. The first entry in the Fixed Dial list will be displayed. Scroll to the entry you wish to delete and press **OK**.

One-Touch Dial Setting

This option allows you to specify which Phone Book list can be One-Touch Dialed.

To Phone Memory

Switches One-Touch Dialing to your Personal Numbers list stored in phone memory (locations 1 to 9).

To SIM Memory

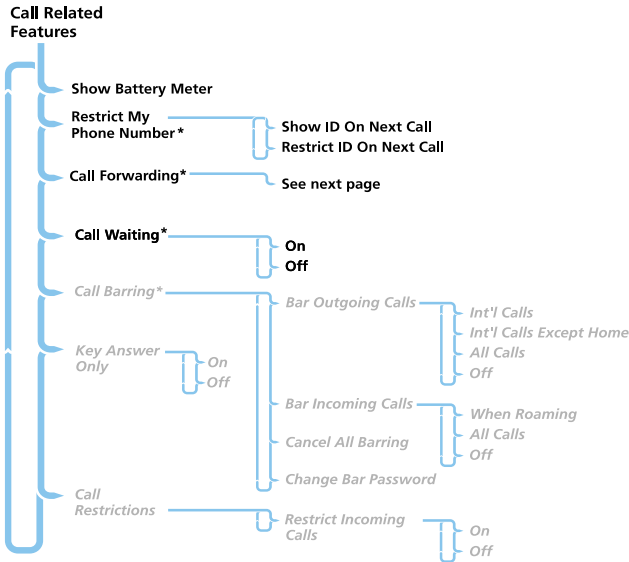
Switches One-Touch Dialing to your Personal Numbers list stored on your SIM card (locations 101 to 109).

To Fixed Dial List

This option is only available if you have Fixed Dialing.

Switches One-Touch Dialing to your Fixed Dial list (locations 1 to 9).

Call Related Features Menu



Menu Navigation

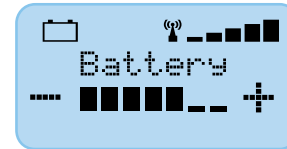


Items shown in *italics* are available only when **Extended Menus** are switched on.

* Network dependent features.

Show Battery Meter

This option displays the approximate amount of battery capacity remaining, for example:



See 'Your Battery' on page 11 in the section, *About Your Phone, Battery, and SIM Card*, for more information.

Restrict My Phone Number

Restrict My Phone Number is a network feature. You will need to subscribe to one of the two Caller Line Identification restriction features with your PCS Service Provider.

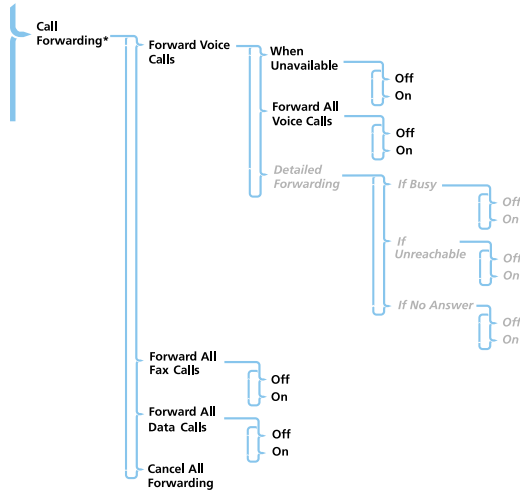
Show ID On Next Call

Your phone number is sent with the next attempted call. After this, your phone number will not be sent until you re-select this option.

Restrict ID On Next Call

Your phone number will not be sent with the next attempted call. After this, your phone number will be sent with calls until you re-select this option.

OK Call Forwarding



If you subscribe to Call Forwarding through your Service Provider, you can separate fax or data calls from voice calls, route all calls to wherever you may be reached, or forward calls when you cannot be reached.

This submenu can be used to:

- Forward all incoming calls unconditionally
- Forward incoming calls whenever your phone is unavailable, busy, unreachable or not answered
- Forward incoming data and/or fax calls
- Cancel all forwarding options

After selecting any of the Call Forwarding options, there will be a short delay while the phone asks the network for the requested setting.

You cannot change the Call Forwarding settings when you are out of PCS coverage.

Forward Voice Calls

This submenu will allow you to set Call Forwarding for voice calls in three ways: **When Unavailable**, **Forward All Voice Calls**, or **Detailed Forwarding**.

When Unavailable

Use this option to forward all incoming calls to a single number whenever your phone is unavailable.

The option has two settings, **On** or **Off**.

If you change the setting to **On**, you will be asked to enter a forwarding phone number using the digit keys.

If both are activated, **Forward When Unavailable** overrides **Detailed Forwarding** settings.

Forward All Voice Calls

Use this option to *unconditionally* forward all incoming voice calls to a single number.

The option has two settings, **On** or **Off**.


If you change the setting to **On**, you will be asked to enter a forwarding phone number using the digit keys.

Forward All Voice Calls overrides all other forwarding settings.



Detailed Forwarding

You can use Detailed Forwarding to be sure you do not miss any calls when your phone is busy, unreachable, or not answered.

 *Detailed Forwarding settings are ignored while Forward All Calls or Forward When Unavailable are activated.*

Each option has two settings, **On** or **Off**.

If you change the setting to **On**, you will be asked to enter a forwarding phone number.

If Busy

This option will forward incoming calls if your phone is busy.

If Unreachable

This option will forward incoming calls if your phone cannot be contacted by the network.

If No Answer

This option will forward incoming calls if you do not answer.

Forward All Fax Calls

Use this option to forward all fax calls to a single number.

The option has two settings, **On** or **Off**.

If you change the setting to **On**, you will be asked to enter a forwarding phone number using the digit keys.

Forward All Data Calls

Use this option to forward all data calls to a single number.

The option has two settings, **On** or **Off**.

If you change the setting to **On**, you will be asked to enter a forwarding phone number using the digit keys.

Cancel All Forwarding

Use this option to cancel the forwarding of incoming calls.

 *This option resets all forwarding settings to Off and removes all forwarding numbers.*

OK Call Holding and Call Waiting




Your phone supports the PCS network options of Call Holding and Call Waiting.* Using these options, you can place a current phone call on hold and accept an incoming call or start a second call.


The Call Waiting menu item has two settings, **On** or **Off**. If you select **Off**, you will not be notified of waiting calls. The person trying to contact you will either receive a busy tone or be forwarded if **Detailed Forwarding - If Busy** is activated.

*Network dependent feature.

Call Waiting



If Call Waiting is **On**, you will be notified of an incoming call by an audible alert and by the message **Call Waiting - Answer?**

- To accept the incoming call, press . The other caller will automatically be placed on hold.
- To reject the incoming call, press  or press  and select **Reject Call Waiting**.

If you would like to end the active call first, press  and select **End Active Call?** The phone will then ring and can be answered normally.


If you have CLI, the caller's information will be displayed instead of the Call Waiting message.

Call Holding

If you would like to put an active call on hold to make another call, press  and select **Call Hold**. Then press  again and select **Make New Call**.

- To end a held call, press  and select **End Held Call**.

Switching between calls

Pressing  will switch you between the active and held calls. The other caller will automatically be placed on hold.

Switching between calls

Closing the phone will end both the active and the held calls.

Call Holding and Call Waiting Messages

During Call Holding and/or Call Waiting operations, your phone may display one or more of the following messages:

Trying

A request to hold the active call, or swap the active call with a held call, has been made.

or

A request to reconnect the held call has been made.

Hold Failed

The request to hold a call has been unsuccessful.

Cannot Hold Second Call

A call is already on hold, you cannot place two calls on hold at the same time.

Reconnect Failed

The held call could not be made active again.

Busy Try Later

Your phone is still working on a previous command. Wait a short time before repeating the command.

Anonymous

The person who is calling you has blocked their number from appearing on your phone.

Unavailable

The network is unable to provide the caller's number.

OK Call Barring

Call Barring is a network feature that can be used to selectively bar outgoing and incoming calls.

If you change the barring setting, you may be asked to enter your barring password. There will be a short delay while the phone notifies the network of the new setting. When the change has been made by the network, the phone will display a confirmation message.

The *initial* password is supplied by your PCS Service Provider when you subscribe to this service.

 This option may be affected by the Fixed Dialing setting.

Bar Outgoing Calls

After selecting this option, there will be a short delay while the phone asks the network for the current setting.

Int'l Calls

Bars outgoing international calls.

Int'l Calls Except Home

Bars outgoing international calls, except those to your home country.

All Calls

Bars all outgoing calls, except emergency calls.

Off


Disables all Call Barring for outgoing calls.

Bar Incoming Calls

After selecting this option, there will be a short delay while the phone asks the network for the current setting.

When Roaming

Bars incoming calls when you are outside your home service.

 This option can be useful to avoid the surcharge applied by some Service Providers for receiving calls while roaming.

All Calls

Bars all incoming calls.

Off

Disables all Call Barring for incoming calls.

Cancel Call Barring

This will cancel all your current Call Barring settings.

Change Bar Password

This option can be used to change the Call Barring password.

After selecting this option, you will be asked to enter the current password.

You will be asked to enter, and then re-enter, your new 4-digit barring password. When the change has been made by the network, the phone will display a confirmation message.



Key Answer Only

This feature has two options, **On** or **Off**.

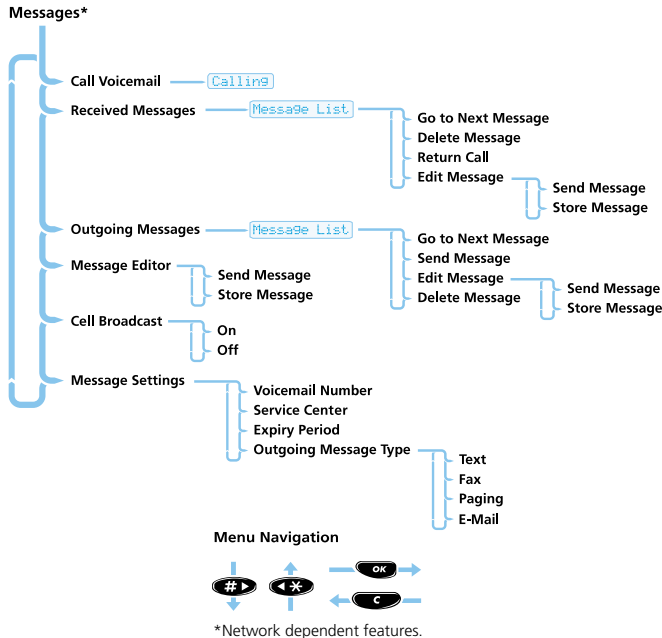
When a call is incoming, opening the phone normally answers it. If you wish to open the phone without answering calls, set Key Answer Only to **On**. Then, if your network offers Caller Line Identification and you are a subscriber, you can open your phone to review the number or name of the caller before you answer. To answer a call with Key Answer Only activated, press **OK**, **1** through **WXYZ**, or **#**.

To reject the call, press **C**.

When set to **Off**, opening the phone answers an incoming call.



Messages Menu



Overview of Messages and How to Use Them

Your phone supports the two PCS message features: Short Message Services (SMS) and Cell Broadcast.

SMS Messages

These are text messages that are sent specifically to and from your phone number. All SMS messages are stored on your SIM card. The amount of storage space is determined by your network provider and is shared between both outgoing and incoming messages.

When an SMS message is received, your phone:

- 1 Makes three short rings.
- 2 Displays the messages icon.
- 3 Stores the message for later viewing, if there is space. If there is not enough space, the icon will flash. One or more messages must be removed before the message can be stored.

Your Service Provider will only transmit a message for a limited time. If a location is not cleared from your phone's message memory before the message is removed from the network, the new message will be deleted, and you will not be able to receive or read it.

Cell Broadcast Messages

These are general messages, broadcast to a group of phones and can only be received when your phone is in standby mode.

These messages are broadcast in numbered 'channels' and, in general, each channel will tend to carry one particular type of information.

Typical Cell Broadcast channels have information on local weather conditions, traffic reports, or stock market prices. Please contact your network operator for a list and description of available channels.

When the message has scrolled across the display, the beginning of the message will be shown until you either remove it or a new message arrives.

How to Read SMS Messages

You can use the scroll keys (MENU, ⏪, and #▶) to scroll through messages in either the Received Messages or Outgoing Messages lists.

To display a specific message, enter the message number. For example, press 5 JKL to display the 5th message. If the message does not exist, Invalid Msg Number will be displayed.

Alternatively, to display the next message, press OK and select Go To Next Message.

How to Create and Edit SMS Messages

Use the *Message Editor* to create or modify text messages. When you enter the editor, the last message that was edited will be displayed. Press and hold C to clear the message and start a new one, or modify the message displayed. For an explanation of how to enter text, see 'How to Enter Alphabetic Characters' on page 32 of *What is the Phone Book?*

Press OK once you have completed your message. You will then be presented with the following options:

Send Message - If you select this option you will be prompted for a phone number. Enter the number and then press OK to send the message.

Dialing prefixes and area codes may be required.

Store Message - Select this option to store your edited message in your Outgoing Messages list.

If you don't store the message after it has been edited, you will lose all your changes as soon as you select another message to be edited.



OK Call Voicemail

to call voicemail

Once selected, this option will leave the Messages menu and automatically make a phone call to the current voicemail number. The display will show **Calling** and standard call operations can be performed.

The voicemail access number may be stored on your SIM card by your Service Provider. If so, your phone will automatically call this number. Otherwise, you will need to store the number by selecting **Voicemail Number** in the **Message Settings** submenu.

Press when viewing any message to enter the **Go to Next Message**, **Delete Message**, **Return Call** and **Edit Message** submenu.

Go to Next Message

This option will display the next received message.

If you are currently reading the last message in your list, then this option will take you back to the top of the list.

Delete Message

This option will delete the currently viewed message

Return Call

This option will call the number of the message sender (if included by the network) or a number enclosed in quotes "" within the message.

Edit Message

This option allows you to use the Message Editor to edit the selected message and then to either send the modified message and/or store it in your Outgoing Messages list. See 'How to Create and Edit SMS Messages' on page 45 for more information on using the Message Editor.

Received Messages

to read incoming messages

This option is used to view and manage any SMS messages that have been sent to your phone number.

When selected, this option will display a message indicating the total number of messages and how many of these are new. If there are no messages, **No Messages** will be displayed.


If there are messages, the new messages will be displayed first, followed by the old. Repeated presses of will display the entire message, the time it was sent, and the phone number of the sender if available.


Once you have read a new message, it will automatically become old.

See 'How to Read SMS Messages' on page 45 for more information on navigating through the messages.

Outgoing Messages

This option is used to view and manage any outgoing messages. These messages will be stored on your SIM card. When you select this option, the total number of messages will be displayed followed by the first message in the list.


 You cannot send an outgoing message until the Message Service Center number has been set. See 'Message Settings' on page 48 for more information.

Press  when viewing any message to enter the **Go to Next Message**, **Send Message**, **Edit Message** and **Delete Message** submenu. See 'How to Read SMS Messages' on page 45 for more information on navigating through the messages.

Go to Next Message

This option will display the next outgoing message.

Send Message

If you select this option you will be prompted for a phone number, enter the number and then press  to send the message.




Edit Message

This option allows you to use the Message Editor to edit the selected message and then to either send the modified message or store it in your Outgoing Messages list. See 'How to Create and Edit SMS Messages' on page 45 for more information on using the Message Editor.

Delete Message

This option will delete the currently viewed message.

Message Editor

   to access Message Editor





The Message Editor is used to create a new message or edit the currently selected message. Once selected, choose to either **Send Message** or **Store Message** in your Outgoing Messages list. See 'How to Create and Edit SMS Messages' on page 45 for more information on using the Message Editor.




Cell Broadcast

This option is used to set the cell broadcast settings. The option has two settings, **On** or **Off**.

If you change the setting to **On**, you will be asked to choose a channel.

Please contact your Service Provider for a list of available channels and the information they provide.

While a broadcast message is scrolling across the display, you can stop and start it by pressing . Press  to restart the message from the beginning. If you want to remove the message from the display, press  followed by .

 If you need to use  and  for their normal functions while you are receiving a cell broadcast message, you must first remove the message.

Message Settings

Voicemail Number

This option is used to store a phone number which will be used by the 'Call Voicemail' option. The number can be manually entered or read automatically from your SIM card (depending on your Service Provider).

If there is already a Voicemail Number, this will be shown in the display. This can be used, modified, or deleted as desired.

Service Center

Before you can send any messages, you must check this option to ensure you have a Message Service Center Number. Normally, this will be read from your SIM card. If no number is available, contact your Service Provider.

Expiry Period

You can use this option to specify the maximum time, in hours, that your unforwarded messages are to remain with the Message Service Center before being deleted. When you select this option, the current expiry period will be displayed (the default is 24 hours).

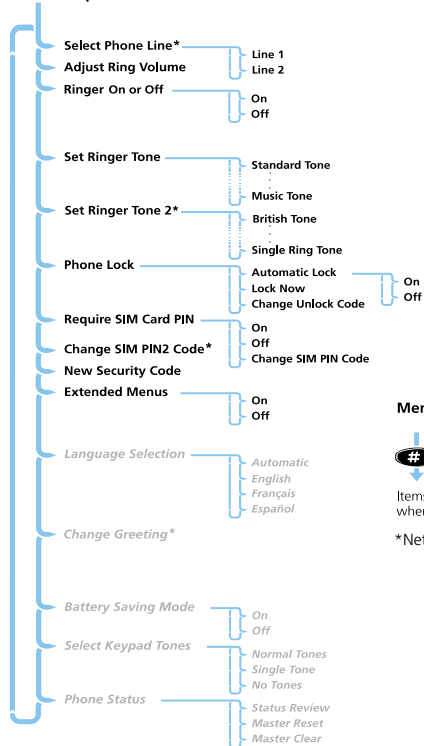
The maximum value you can enter is 10584, though the real limit will depend on your Message Service Center.

Outgoing Message Type

This option is network dependent and can be used to specify the format of your outgoing messages. You can select from the following message types: [Text](#) (default), [Fax](#), [Paging](#) or [E-Mail](#).

Phone Setup Menu

Phone Setup



Menu Navigation



Items shown in *italics* are available only when **Extended Menus** are switched on.

*Network dependent features.

Select Phone Line

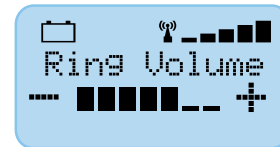
Alternate line service is a subscription feature that allows your phone to accommodate two different voice phone lines. This allows you to manage different types of calls (such as personal and business) separately.

Calls may be billed separately for each line. The outgoing line selection does not apply to data or fax outgoing calls. If you subscribe to this feature, you may select either *Line 1* or *Line 2* for outgoing calls.

Adjust Ring Volume

volume buttons (up or down)

This option is used to set the incoming call ring tone volume. When selected, the phone rings and the volume meter will be displayed as follows:



After selecting this menu item, adjust the volume by pressing the volume keys on the side of your phone.

The meter disappears after a short time, or by pressing or .



Ringer On or Off

8 TUV to turn ringer on or off

This option sets the way your phone alerts you to an incoming call. The options are:

- **On** - the phone will ring with the tone specified by the set ringer tone option.
- **Off** - the phone will just display the **Call** message.

OK Set Ringer Tone

This option sets the tone your phone will make when an incoming call is received.

Standard Tone

Your phone makes a standard ringing tone.

Single Ring Tone - Music Tone

When selected, your phone will produce one of these alternative ringer tones.

If you select the Single Ring Tone option, the phone will only ring once when a call is received.

OK Set Ringer Tone 2

This option sets the tone your phone will make when an incoming call is received on Line 2.

This option will not appear if you do not subscribe to Line 2.

OK Phone Lock

This option is used to set and change the unlock code.

The unlock code is a four-digit number which is set at manufacture to **1234**.

This can be changed at any time by using **Change Unlock Code**.

Automatic Lock

This option can be used to automatically lock your phone each time it is switched on.

The option has two settings, **On** or **Off**.

Lock Now

5 JKL to lock phone

This option can be used to immediately lock your phone. Once selected, your phone will be unusable until the unlock code is entered.

Change Unlock Code

This option is used to change the unlock code.

After selecting this option, you will be asked to enter the current security code before you can proceed.

You can now enter a four-digit code to replace the old code.

By pressing **MENU**, you can access this option even when the phone is locked.

Require SIM Card PIN

This option is used to set and change the PIN code.

The PIN code can be set to protect your SIM card from unauthorized use. If set to **On**, access to your SIM card will be restricted each time it is inserted or the phone is turned on.

The option has two settings, **On** or **Off**.

If the SIM card does not support PIN code disabling, these items will not appear.

Change SIM PIN Code

This option is used to change the SIM card PIN code.

Require SIM Card PIN must be set to **On** and you must enter the old PIN code before you can proceed.

You will be asked to enter a new, four- to eight-digit code to replace the old PIN code. The new PIN code must be entered again as confirmation.

! *If the PIN number is entered incorrectly three times in a row, your SIM card will automatically lock-up and the **Blocked** message will be displayed.*

Unlocking Your Phone

If you receive the **Blocked** message, you will need to enter an unblock code and key sequence before you can use the phone.

! *The 8-digit PIN unblocking code will have been provided with your SIM card by your PCS Service Provider.*

Enter the following key sequence to unblock your phone:

Unblock Code

New PIN Code **New PIN Code**

The new PIN code must contain four to eight digits.

! *If this operation is performed incorrectly 10 times in a row, your SIM card will become permanently blocked.*

Change SIM PIN2 Code

This option is used to change your PIN2 security code.

When you select this option, you must enter the old PIN2 security code before you can proceed.

You will be asked to enter a new four- to eight-digit code to replace the old PIN2 security code. The new PIN2 security code must be entered again as confirmation.

! *If the PIN2 security code is entered incorrectly three times in a row, the **Blocked** message will be displayed.*

When the **Blocked** message is displayed, you are not allowed access to menu items that require you to enter the PIN2 code, for example, **Setup Fixed Dialing** and **Call Charge Settings**.

If you receive the **Blocked** message when you try to enter your PIN2 code, you will need to unblock and change the code using the following key sequence:

Unblock Code

New PIN2 Code **New PIN2 Code**

! *The 8-digit unblocking code will have been provided with your SIM card by your PCS Service Provider.*

! *If the PIN2 unblocking operation is performed incorrectly 10 times in a row, your PIN2 code will become permanently blocked.*


OK New Security Code

The security code is used to control access to security and other options within the menus.



This option is used to change the security code, which is set by Motorola to **000000**.

Once selected, you will be asked to enter the current security code before you can proceed.

You will then be asked to enter a new six-digit code to replace the old security code.

 *In order to safeguard your phone, you should change your security code from the factory setting as soon as possible.*

OK Extended Menus

 Press and hold . Extended Menus will be temporarily activated until you exit the Options Menu.

This option is used to switch the extended menus on or off.

If the extended menu option is switched off, you will not be able to access any of the extended features.

The option has two settings, **On** or **Off**.

OK Language Selection

This option is used to change the language for display messages.

The option has multiple settings of English, French, and Spanish.

The automatic selection will display English.

When you select a language, all further display prompts and help messages will be in the selected language.

OK Change Greeting

This option is used to change the message displayed when you switch on your phone.

Once selected, you will be able to enter a new greeting of up to 24 characters. See 'How to Enter Alphabetic Characters' on page 32 for more information.

The new greeting will be displayed when your phone is next switched on.

Battery Saving Mode

This option can help you to conserve battery power. Also known as DTX (Discontinuous Transmission), this feature will cause your phone to operate at reduced power when you are not talking.

The option has two settings, **On** or **Off**.

OK Select Keypad Tones

This option allows you to change or disable tones you hear when you press a key.

The option has three settings, **Normal Tones**, **Single Tone**, or **No Tones**.



Phone Status

Status Review

This option can be used to view the current setting of menu options.

When selected, your phone will display the list of menu items that you have changed from the default setting.

Master Reset

! *This option should be used with caution.*

This option is used to restore certain phone options to their original settings.

When selected, you will be asked to enter the security code. Once entered, Master Reset will perform the following operations:

- Cancel Automatic Answer, Extended Menus, Audible Call Timers, In-Call Display Meter, Battery Save (DTX), Auxiliary Alert, Automatic Handsfree, Automatic Lock and Cell Broadcast.
- Resets all Quick Access keys to their defaults.
- Restore Keypad Tones to Normal, Ringer Tones to Standard, Volume Level to the middle of its range and Network Search frequency to Medium.

Master Clear

! *This option should be used with extreme caution. For example, it will clear all of the Phone Book entries from your phone memory.*

This option is used to restore certain phone options to their original settings.

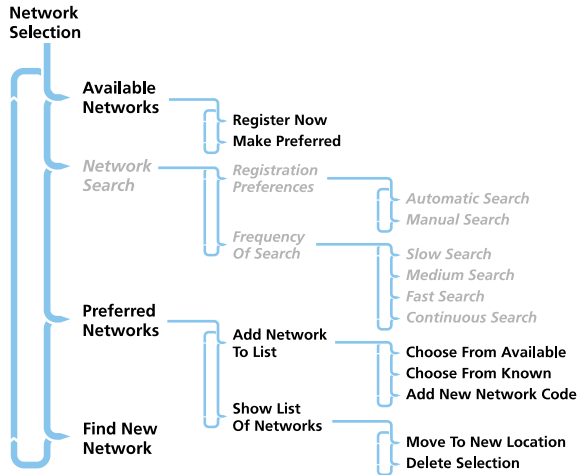
When selected, you will be asked to enter the security code. Once entered, Master Clear will perform the same operations as Master Reset, plus the following operations:

- Clear the Phone Book entries from phone memory (not from SIM memory).
- Clear the Last Calls Made and Last Calls Received List.
- Clear the Message Editor.
- Reset the Resettable Call Timers.

Master Clear does **not** clear the:

- Fixed Dial list
- My Number(s) list
- Charge Meters
- Received and Outgoing Messages list

Network Selection Menu



Menu Navigation



Items shown in *italics* are available only when **Extended Menu** are switched on.

Network Selection


In order for the phone to make and receive phone calls, it must register with one of the available networks.

Your phone automatically searches for the last network used. If, for any reason, this network is unavailable, your phone will attempt to register with a new network.

When your phone needs to register with a new network, it will generate a sorted list of networks. The network list is sorted in the following order:

- The Home network.
- PCS Networks from a preferred list.
- A random list of other networks found above a certain signal strength.
- All remaining PCS networks in descending order of signal strength. Any forbidden networks, stored in the SIM card, will not be included in the sorted list.

Available Networks

When selected, this option will scan to see which networks are operating in your current location. When you see a network you wish to register with or store in your preferred list, press . You will now enter the *Register Now* and *Make Preferred* submenu.



Register Now

Once selected, your phone will try to register with the selected network. If the registration fails, your phone will try to register in the normal way.

Make Preferred

Once selected, you will be asked where the selected network is to be located in the preferred list.

Network Search

These options determine how often your phone tries to register with a network and how the attempt is made.

Registration Preferences

This option determines how the phone tries to register with a network.

The option has two settings, [Automatic Search](#) or [Manual Search](#).

Automatic Search Mode

In the automatic mode, the phone will try to register with the first network in the sorted list. If this is successful, your phone will display the network name and then enter the standby mode.

If registration is unsuccessful with one network in the list, your phone will try the next listed network. If your phone fails to register with any of the listed networks, it will start at the beginning of the list after a preset period. The preset period is determined by [Frequency Of Search](#).

Manual Search Mode

In the manual mode, the phone will present you with the sorted list of PCS networks. Your phone will try to register with the selected network. If this is successful, the phone will display the network name and then enter the standby mode.

If registration is unsuccessful, your phone will present the list again after a preset period. The preset period is determined by [Frequency Of Search](#).

Frequency Of Search

This option is used to determine how long your phone waits before attempting to re-register after a registration attempt has failed.

The option has the following settings: [Slow Search](#), [Medium Search](#), [Fast Search](#) or [Continuous Search](#).

! *Fast and Continuous Search may use up a significant amount of battery power.*



OK Preferred Networks

Add Network To List

This option enables you to add networks to your preferred list by either scanning the area, selecting from a preset list, or manually entering network codes.

When selected, **Choose From Available** will scan for networks operating in your current area, whereas **Choose From Known** will present you with a preset list of networks.

As you scroll through either list, press **OK** when you see a network you wish to store on your preferred list. You will be asked to select a location on your preferred list according to your preference.

Select **Add New Network Code** to enter network codes directly. Once entered, you will be asked select a location on your preferred list according to your preference.

Show List Of Networks

This option is used to view and modify your preferred list. Use **←*** and **#▶** to scroll through the networks that you have stored on the list and press **OK** to enter the **Move to New Location** and **Delete Selection** submenu for the displayed network.

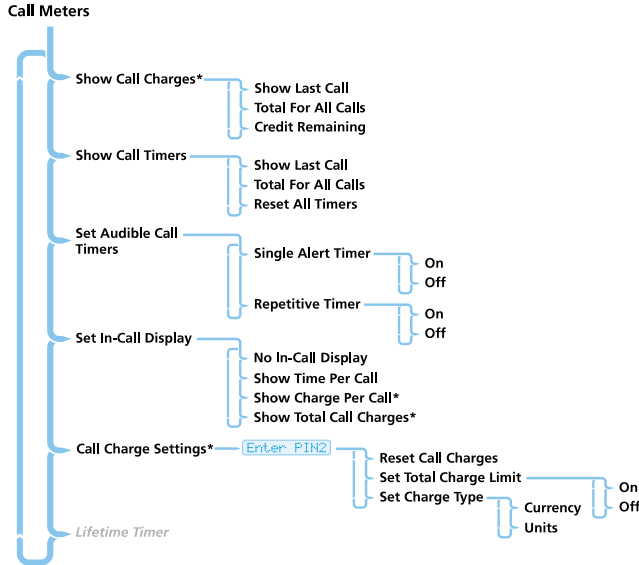
When **Move to New Location** is selected you will be asked to enter a new location on your preferred list for the selected network.

When selected, **Delete Selection** will remove the selected network from the preferred list.

Find New Network

When selected, the phone will try to register with a network in the normal manner, with one exception. When the registration attempt is made, your current network will be excluded from the list of those available. If the attempt fails, your phone will then try to re-register with the previous network.

Call Meters Menu



Menu Navigation



Items shown in *italics* are available only when **Extended Menus** are switched on.

*Network dependent features.

Call Metering

Your phone has a variety of call meters that you can use to monitor individual and total call times or costs.

Call cost information is only available if you receive the Advice of Charge service. If you do not receive this service, then only time meters are available.

You can set the call meters to display during calls or choose to be reminded audibly by beeps at specific times or intervals.

You can even set a maximum charge limit. Once your phone reaches the limit, set by you in either units of time or currency, it will prohibit all calls until it is reset.

Show Call Charges

This option allows you to display the cost of your calls or the amount of credit remaining. The figures are in phone units or currency depending on the setting of **Set Charge Type**.

Show Call Charges is only available if you receive the Advice of Charge service.

Show Last Call

Displays the cost of your last chargeable call.



Total For All Calls

Displays the cost of all your chargeable calls since the charge meters were reset to zero using [Reset Call Charges](#).

Credit Remaining

Displays the difference between [Total For All Calls](#) and the limit specified with [Set Total Charge Limit](#). If there is no limit, [No Charge Limit Set](#) will be displayed.

Show Call Timers

This option allows you to display the duration of your calls and to reset your time meters to zero.

If you receive the Advice of Charge service, all calls are timed.

Show Last Call

Displays the timed duration of your last call.

Total For All Calls

Displays the timed duration of all your calls since the time meter was reset to zero using [Reset All Timers](#).

Reset All Timers

Sets the resettable time meters to zero. The Lifetime Meter is not resettable.

OK Set Audible Call Timers


Your phone provides two programmable audible call timers:

- [Single Alert Timer](#) will sound a beep just once during a call, after a preset time has elapsed.
- [Repetitive Timer](#) will sound regular beeps during a call, at preset intervals.

In both cases, the timers will sound their beeps ten seconds before the end of the programmed time.

Set In-Call Display

Use this option to display the time or charge meters during calls. If you do not have the Advice of Charge service, only the time meter is available.

 *If a total charge limit has been set and charge meter has been selected, then the in-call display will always display Credit Remaining.*

No In-Call Display

Switches off any in-call displays whether charge or time meter.

Show Time Per Call

Displays the time meter during calls. If you receive the Advice of Charge service, only the chargeable calls will be displayed.



Show Charge Per Call, Show Total Call Charges

These menu items are only available if you receive the Advice of Charge service.

Choose to display during calls either the total call charges since the meter was reset or the charge per call. The meter shows phone units or currency depending on the setting of **Set Charge Type**.

Call Charge Settings

This submenu allows you to customize your Advice of Charge settings. You will be prompted to enter your PIN2 security code before you can access these options.

This menu item is only available if you receive the Advice of Charge service.

Reset Call Charges

Resets your charge meters to zero.

Set Total Charge Limit

Sets the maximum limit for call charges. Once this limit has been reached, the network will refuse any further chargeable calls.

If you switch the charge limit **On**, you will be prompted to enter a new limit. Enter the amount as either units or currency depending on the setting of **Set Charge Type**. Units must be entered as whole numbers.

When the charge limit is activated, you will not be able to make fax or data calls.

Once a limit is set, the in-call display will show the remaining credit. When you reach your last two minutes, the warning message **Approaching Charge Limit** will be displayed and a warning alert will sound. The sound will be repeated when one minute remains. When the limit is reached, the message **Charge Limit Reached** will be displayed and you will not be able to make any more chargeable calls.

Once the limit is reached, the Total Charge Limit will need to be reset or switched off before any chargeable calls can be made.

Select **Off** to switch off the charge limit.

Set Charge Type

This option defines whether charge information is displayed as either phone units or currency.

Currency

Sets the charge type to currency. You will be prompted to enter the **Currency Name**. Enter a 3-character notation. For example, enter USD for United States or CAD for Canada. You will then be prompted for the **Charge Per Unit**. Enter the amount and press

Units

Sets the charge type to phone units.

Lifetime Timer

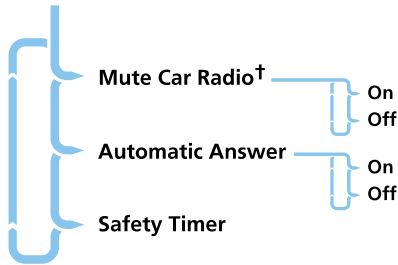
This option is used to display the total time of all calls made on your phone.

This meter can not be reset. **Reset All Timers**, **Master Reset**, and **Master Clear** do not affect this timer.



Accessory Setup Menu

Accessory Setup*



Menu Navigation



† Availability depends on the type of SIM card. This option can only be enabled by your local dealer.

* You will only be able to access this menu only when your phone is mounted in a car kit.


Car kits can provide charging facilities and some provide connection to an external antenna for better reception. Your phone can also be linked to external microphones and speakers for hands free operation.

Your phone provides several options to compliment the use of car kits.

OK Mute Car Radio

This option can be used to mute your car radio when you make, or receive, a call when your phone is attached to the car kit. It must be enabled by your local dealer.

This option has two settings, **On** or **Off**.

 This option will have no effect if your car radio does not have a mute feature, or if the car kit installation does not support this option.

Automatic Answer


This option allows your phone to automatically answer an incoming call after two rings, when it is attached to the car kit.

This option has two settings, **On** or **Off**.

Safety Timer

This option can be used to specify how long the phone remains on after the vehicle ignition has been turned off. This prevents the vehicle's battery from becoming drained and saves you from having to re-enter PIN and unlock codes after every short stop.

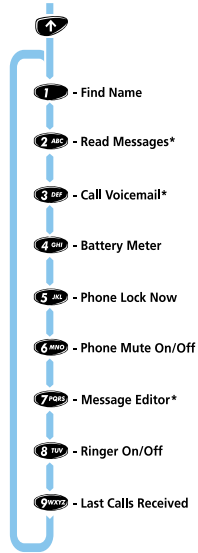
The Safety Timer is initially set at 60 minutes, but you can choose any value between one and 999 minutes.

 If the Safety Timer is set to zero, the phone, while connected to the car kit, will operate only in conjunction with your vehicle's ignition. If the ignition is off and you press the phone's power key, the phone will power up momentarily and then immediately power down.



MENU

Using the Quick Access Menu



*Network dependent features

The menu shown above represents the default features supplied with your phone.

Although the features in your phone are available through easy access menus, some of the most commonly used features are also available in the Quick Access Menu. Each feature in the menu is allocated a number from 1 to 9.

To use a Quick Access feature, press the Quick Access key followed by the number of the feature, or press or to scroll through the menu and then press .

You can change the features, and the positions of the features, available in the Quick Access Menu - see 'Customizing the Quick Access Menu' on page 66.

The following is a summary of the Quick Access features.

Find Name 1

Enter the first three characters of the name and press . The first matching entry in the Phone Book will be displayed. Press to call the number.

Read Messages 2 ABC

Your newest message will be displayed; you can then read, send, delete and edit messages as normal. See 'Outgoing Messages' on page 47 for more information.

Call Voicemail 3 DEF

Your phone will make a call to your voicemail number.

You must have defined a Voicemail number in order to use this feature. See 'Call Voicemail' on page 46 for more information.

Battery Meter 4 GHI

A bar graph indicating the approximate battery charge level will be displayed. The more bars displayed, the greater the charge level. - □ □ □ _ _ _ _ +

See 'Show Battery Meter' on page 38 for more information.




Phone Lock Now

Prompts you to confirm that you want to lock the phone. If this is given, your phone becomes locked and you will not be able to use it again until the unlock code is entered. See 'Phone Lock' on page 50 for more information.

Phone Mute On or Off

Temporarily turns the microphone off during a phone call. Reselect this option to resume your conversation.

Message Editor

The last message edited will be displayed. Press and hold  to clear the message and start a new one, or modify the message displayed. See 'How to Create and Edit SMS Messages' on page 45 for more information.

Ringer On or Off

This option turns the ringer on or off.



Last Calls Received



Lets you access, view, and dial phone numbers in your last ten calls received list.

Ring Volume

Displays and sets the incoming call ringer volume. Press the Quick Access key, then set the volume with the volume up/down buttons.


The following features can be added to your Quick Access Menu in place of features on the default list.

Find by Location

Enter the location number and press . The first matching entry in the Phone Book will be displayed. Press  to call the number.

Add Entry to Phone


Enter a phone number and then a name.

 *If you already had a number displayed, it will automatically be re-displayed when you select this feature.*

The number will be stored in the next available phone memory location. See 'Add Entry' on page 34 for more information.

Add Entry to SIM

Enter a phone number and then a name.

 *If you already had a number displayed, it will automatically be re-displayed when you select this feature.*

The number will be stored in the next available SIM card location.

Switch Memory

Switches One-Touch Dialing between the phone and SIM memories depending on the current setting.

Read Messages

Your newest message will be displayed; you can then read, delete and edit messages as normal. See 'Received Messages' on page 46 for more information.

Outgoing Messages

Your newest message will be displayed. You can then read, delete and edit messages as normal. See 'Received Messages' on page 46 for more information.

Call Charge

Displays the cost of your last chargeable call. See 'Show Call Timers' on page 58 for more information.

Call Timer

Displays the duration of your last chargeable call. See 'Show Call Timers' on page 58 for more information.

Show My ID

Your phone number will be sent with the next attempted call. After this, your phone number will not be sent until you reselect this option.

Restrict My ID

Your phone number will not be sent with the next attempted call. After this, your phone number will be sent until you reselect this option.

Key Answer Only



Disables open-phone answering. When the phone rings, you can open the phone and see the caller's identity on the display, before deciding whether or not to answer. To answer the call, press a key.

Switch Line 1/2

Allows you to switch between Line 1 and Line 2.

Forward All Voice Calls

Unconditional Call Forwarding will be switched either on or off depending on the current setting. See 'Call Forwarding' on page 41 for more Call Forwarding options.




-  You must define a forwarding number using Forward All Calls in the Call Forwarding submenu in order to use this feature.
-  You cannot switch Call Forwarding on or off if you are outside DCS coverage.



Customizing the Quick Access Menu

You can change the features in the Quick Access Menu to suit your personal preferences.

To customize the menu:

- 1 Press  and scroll to the menu item you wish to change.
- 2 Press and hold  to access the list of features available. The currently selected feature will be displayed.
- 3 Scroll through the list until you find the feature you wish to store in the Quick Access Menu, then press .
- 4 **Completed** will be displayed to confirm that the feature has been stored.

The items in the Quick Access list will appear in the following order:

- Find by Name
- Find by Location
- Add Entry to Phone
- Add Entry to SIM
- Call Voicemail*
- Battery Meter
- Phone Lock Now
- Phone Mute On or Off
- Ring Volume
- Ringer On or Off
- Switch Memory
- Read Messages*

- Outgoing Messages*
- Message Editor*
- Last Calls Received
- Last Call Charge*
- Last Call Timer
- Show My ID Next Call*
- Restrict My ID*
- Key Answer Only
- Switch Line 1/2*
- Forward All Voice Calls*


**Network dependent features.*

Accessories

The following accessories have been designed to work with your phone. Additional accessories may be available and are packaged separately. Please refer to your local Service Provider or retail outlet for more information.

Desktop Charger (SPN4435)

The Desktop Charger allows you to charge a phone with a battery attached and a spare battery at the same time. The charging status for each battery is indicated by LEDs at the front of the charger.

 *The Desktop Charger must be used with the power adapter (SPN4278) and an adapter plug (SYN4655, SYN4656, or SYN4657).*

Power Adapter (SPN4278)

The power adapter (charger) connects to the Desktop Charger or directly to the phone. When connected directly to the phone, it charges the battery and also provides dead battery operation.

Cigarette Lighter Adapter (SYN4241)

The Cigarette Lighter Adapter connects to your phone and allows you to charge your phone's battery while driving. When the phone is in use, the adapter overrides the battery therefore preserving battery life. The adapter also provides dead battery operation.

Handsfree Car Kit (S7396)

The Handsfree Car Kit allows you to safely operate your phone while driving. The car kit provides a responsive directional microphone and direct antenna connection. While connected to the phone, the car kit also charges the battery.

UK Adapter Plug (SYN4656)

The UK Adapter Plug connects the Power Adapter to a UK-style mains power outlet.

European Adapter Plug (SYN4655)

The European Adapter Plug connects the Power Adapter to a Continental European-style mains power outlet.

US Adapter Plug (SYN4657)

The US Adapter Plug connects the power adapter to a USA-style mains power outlet.

PC Card (SYN5182)

The PC Card allows you to send and receive data and fax calls using your phone, data cable, and a peripheral. Transmission speed is up to 9600 bps.

Data Cable (SKN4821)

Allows you to connect your phone to the PC card listed above.

Leather PursePak - Black (SYN4899), Brown (SYN4900)

The Leather PursePak is a combination wallet and holder for your phone. It includes space for money and credit cards.



Leather Pouch - Black (SYN4898)

The Leather Pouch holds the phone while being worn on your belt, similar to your holster.

Slimline Holster (SYN4653)

For use without an auxiliary battery.

Holster (SYN5378)

For use with an auxiliary battery.


Batteries

(Charcoal)



	Type	Capacity	Part Number
Main batteries	Standard NiMh	500mAh	SNN4905
	Slim Li-ion	500mAh	SNN4810
	Extra capacity Li-ion	900mAh	SNN4815
	Auxiliary batteries	Li-ion	900mAh



What to do if...

You can't switch your phone on	<p><i>Check the battery.</i> Is it charged, properly fitted and are the contacts clean and dry? See 'Important Battery Information' on page 11.</p>
You can't make calls	<p><i>Check the antenna.</i> Is it fully extended?</p> <p><i>Check the signal strength meter in the display.</i> If the signal is weak, move to an open space or, if you are in a building, move closer to a window.</p> <p><i>Check the Network Selection settings.</i> Try Manual Selection, or try another network. See 'Network Search' on page 55.</p> <p><i>Check your Operator coverage map.</i></p> <p><i>Is Restricted displayed?</i> Check the Call Barring and Fixed Dialing settings.</p> <p><i>Has the call charge limit been reached?</i> Use your PIN2 code to reset the limit or contact your Service Provider.</p> <p><i>Has a new SIM card been inserted?</i> Check that no new restrictions have been imposed.</p>
You can't receive calls	<p><i>Check the antenna.</i> Is it fully extended?</p> <p><i>Check the signal strength meter in the display.</i> If the signal is weak, move to an open space or, if you are in a building, move closer to a window.</p> <p><i>Check the Call Forwarding and Call Barring settings.</i> See 'Call Forwarding' on page 39 and 'Call Barring' on page 42.</p> <p><i>Check the Ringer settings.</i> If it is off, there is no audible alert. See 'Ringer On or Off' on page 50.</p>
Your phone won't unlock	<p><i>Have you inserted a new SIM card?</i> Enter the new PIN code. See 'Entering Your SIM Card PIN Code' on page 17.</p> <p><i>Do you have a replacement phone?</i> Enter the default phone unlock code - 1234.</p> <p><i>Have you forgotten the unlock code?</i> Press  repeatedly to change the unlock code (you will need your security code). See 'Change Unlock Code' on page 50.</p>
Your PIN is blocked	<p><i>Enter the PIN unblocking code supplied with your SIM card.</i> See 'Unblocking Your Phone' on page 51.</p>
Your PIN2 is blocked	<p><i>Enter the PIN2 unblocking code supplied with your SIM card.</i> See 'Change SIM PIN2 Code' on page 51.</p>
Your SIM card won't work	<p><i>Is the card inserted the right way round?</i> See 'SIM Card Insertion' on page 16.</p> <p><i>Is the gold chip visibly damaged or scratched?</i> Return the card to your Service Provider.</p> <p><i>Check the SIM contacts.</i> If they are dirty, clean them with an antistatic cloth.</p>



<p>The battery won't charge</p>	<p><i>Check the charger.</i> Is it properly connected? Are its contacts clean and dry? See 'Your Battery' on page 11.</p> <p><i>Check the battery contacts.</i> Are they clean and dry?</p> <p><i>Check the battery temperature.</i> If it is warm, let it cool before recharging.</p> <p><i>Is it an old battery?</i> Battery performance will decline after several years use. Replace the battery.</p>
<p>The battery drains faster than normal</p>	<p><i>Are you in an area of variable coverage?</i> This uses extra battery power.</p> <p><i>Is your antenna fully extended?</i> This helps use less battery power.</p> <p><i>Is it a new battery?</i> See 'Charging a New Battery' on page 11.</p> <p><i>Is it an old battery?</i> Battery performance will decline after several years use. Replace the battery.</p> <p><i>Is it a battery that hasn't been completely discharged?</i> Allow the battery to fully discharge (until the phone turns itself off) and then charge the battery overnight.</p> <p><i>Check that the Frequency Of Search feature in the Network Selection menu has not been set to Fast or Continuous.</i> See 'Network Search' on page 55.</p> <p><i>Check that the Battery Saving Mode feature has not been set to Off.</i></p> <p><i>Are you using your phone in extreme temperatures?</i> At extreme hot or cold temperatures, battery performance is significantly reduced.</p>
<p>You can't cancel Call Forwarding or Call Barring</p>	<p><i>Wait until you are in an area with good network coverage and try again.</i></p>
<p>The  symbol is flashing</p>	<p><i>There is not enough memory available to store another SMS message.</i> Use the Messages menu to delete one or more existing messages.</p>
<p>I can't make international calls</p>	<p><i>Some Service Providers automatically bar the ability to make international calls.</i> Contact your Service Provider.</p> <p><i>Have you included the relevant codes?</i> Press and hold  to display the international dialling prefix (+) and then enter the appropriate country code followed by the phone number.</p>



Regulations and Precautions

The U.S. Federal Communications Commission and the Canadian Department of Communications regulate PCS radiotelephone service in their respective countries. It is important for you, the PCS radiotelephone user, to observe the applicable regulations when operating your PCS phone in either country. In addition to these U.S. and Canadian federal regulations, you may also be bound by certain state, provincial, territorial, and local rules and regulations, as well as by your PCS carrier's tariff (the rates, terms, and conditions of its service). If you wish to use your PCS radiotelephone in both the U.S. and Canada, please consult with your service provider.

You should remember that your PCS phone is a radiotelephone, i.e., it combines both wireline technology, as used in your home or office telephone system, and radio technology and that the scope of regulations and precautions is therefore broader than the scope of regulations and precautions relating to wireline-only usage.

Some of the major points of consideration are set out in the following section. Please note, however, that this 'Regulations and Precautions' section does not constitute legal advice and is intended merely for general information purposes. If you have any specific questions, please contact your PCS Carrier (Service Provider).

License

If your home system is in the U.S., you do not require a separate license to operate your PCS radiotelephone. Obtaining a PCS telephone access number is sufficient to register you as a user. If your home system is in Canada, a separate license is required. Your carrier will assist you in the licensing process. If you wish to use your PCS telephone in both the U.S. and Canada, please contact your PCS Carrier (Service Provider).

Denial of Service

A PCS carrier may deny service temporarily or terminate service for violation of any governmental regulations or its tariff.

Magnetic Storage Media

Your phone contains a magnet. Do not place your phone in close proximity to magnetic storage media, such as diskettes or credit cards, for extended periods of time.

Driving

Some jurisdictions prohibit your using a cellular or PCS telephone while driving a vehicle. Even if your jurisdiction does not have such a law, we strongly suggest that, for safety reasons, the driver use extreme caution when operating the cellular or PCS telephone while the vehicle is in motion. (See the 'Safety' section for more information.)



Consumer Responsibilities

Remember that wireline and radio regulations with respect to harassing calls, false distress calls, obscene language, etc., apply to PCS phone usage.

Privacy

As a telephone user, you have come to assume a certain standard of privacy when you place or receive a telephone call via the traditional wireline systems. However, because PCS 1900 is a radiotelephone that utilizes radio transmissions to effect calls, the same standard cannot always be assured. While it is unlawful for any unauthorized person to divulge or use any information obtained from intercepting or 'listening in on' conversations intended for others, you should not assume that your conversation is completely secure. Commercially available scanning equipment can permit a third party to monitor the radio channels used for PCS telephone calls.

Interference

No person shall interfere with or cause interference to any radio communication or signal.

Equipment Modifications

Both the U.S. Federal Communications Commission and the Canadian Department of Communications have type approved the model of PCS radiotelephone which you have purchased, and both have allocated a specific frequency range for PCS service. No changes or adjustments are to be made to your PCS telephone.

Equipment Care

Your Motorola PCS radiotelephone is designed for superior durability under normal use conditions. Protect your PCS phone from water damage that could result from spills or excessive exposure to rain. Never submerge your PCS telephone.

Patent Information

Manufactured under one or more of the following U.S. patents

4121218	4127824	4128740	4138681	4193036	4254382
4302845	4312074	4327319	4329666	4369516	4369522
4378603	4390963	4398265	4400584	Re.31470	4431977
4434461	4455534	4462098	4484153	4485486	4486624
4491972	4504834	D278708	4523155	4546329	4549311
4550426	4551696	4564821	D282169	4571595	4573017
4574243	4585957	4602218	D284759	4616314	4617520
4626309	4628529	4629829	4630304	4630305	4633141
4636593	4636741	4644351	D288432	4648125	4649543
D288683	4654655	4654867	4662691	4667333	4668917
4670747	4672502	4692726	4704588	D292578	4706036
D292920	4710724	4711361	4715063	4716319	4716391
4723305	D294257	4727306	4727583	4730195	4734635
4737976	4740794	4741018	4741034	4742562	D295627
D295975	4751737	4761621	4764737	D297734	D297735
D297736	4777564	Re.32768	4783697	D299232	4797929
4798975	4800348	4802236	4803726	4809356	4811377
4811404	4816774	4817157	4823098	D300742	D300827
4827226	4827507	4829274	4829543	4837534	4843621
4845772	4851966	4868576	4872196	4873683	4876552
4876740	D304189	4879533	4885553	4887050	4890199
D305427	4896124	4896361	4897873	D305717	4903327
D306163	4904549	4905288	4905301	D306299	4910470
4912602	4916262	4918403	4918732	4922209	4924194
4930126	D309301	D309451	4945570	4954796	4956854
4963812	4963843	4965537	4970475	4972355	4972432
4972455	4975808	4982108	4984219	4989230	D314173
4992753	4998289	D315330	D315543	5004992	5008925
5010309	5010570	5014294	5014346	D316859	5017856
5018188	5020076	5020091	5020092	5020093	5023580
5023866	5023911	5025387	5028859	5029233	5036532
5040127	5042071	5045824	5053924	5055800	5055802

5055803	5057762	5058136	5059885	5060264	5060294
5063340	5065408	5067139	5068625	5070310	5077757
5081674	5083304	5093632	D325028	5107487	5109536
5111162	5113400	5113436	5117441	5117449	5121047
5121288	5121412	5122722	D327062	5124889	5127040
5127042	5128834	5130682	5130683	5133010	5136135
5140286	5142551	5142696	5148471	5150075	5150359
5150384	5152006	5152007	5153590	5157693	5159283
5160898	5163159	5164652	5166596	5166642	5170173
5170492	5173672	5175759	5175874	5177458	5182749
5185566	5187640	5187809	5192924	5193223	5195106
5195108	5198887	5200655	5201069	5202654	5203009
D334746	5204977	5205751	5208566	5210793	5211581
5212815	5212826	5214675	5214774	5220290	5222078
5222104	5222251	5224122	5230007	5230093	5233506
5233633	5235492	5237257	5237570	5239127	5239294
5241545	5241548	5241592	5241650	5241688	5241693
D338887	5242767	D339127	D339335	D339336	D339337
5247544	D339578	5249302	5250916	5251331	5253292
5255292	5257414	5259005	5260170	5260988	5261119
5262710	5263052	5263055	5265219	D341589	5271042
D342248	5276685	5276707	5276913	5278527	5278832
5278994	5280637	5280644	D343615	D343616	D343834
D343835	5287553	5287555	5287556	5289505	D344512
5297142	5299232	5301364	5301365	5308716	5312705
5321847	5323421	5325429	D348250	D348427	5327642
D348665	D348666	D348668	5331123	D349273	5336984
5338909	D350113	D350348	D350349	D350350	5349588
5351245	D351375	5359696	5361400	5363071	5365549
D352503	5366826	5367538	5367558	5371791	D353131
5373101	D353361	5375143	5375258	D353587	D353588
5379324	5384825	5392000	5392023	5396654	D356309
5402447	5404120	5404582	5406146	5406562	D357224
D357457	5410275	5414711	D358148	5420759	5424689
5428820	5428836	5430416	5432017	5434947	5436589

5436802	5438684	D361070	5444764	5446763	5448763
5448770	5448771	5453997	D362840	D362852	5461643
5463628	5465412	5469177	5475752	D365094	5477192
D365817	5486843	5487184	5488335	5490177	5493198
5493700	5493714	5495206	5497126	5497383	D367640
5499273	5504812	5506490	D368696	5508709	5510693
5511235	5513078	5513382	D369359	5513996	D369598
D369797	5519303	5519346	5519506	5519777	D370016
D370463	5526398	D370672	5530922	5539360	5542103
5542106	5544250	D372481	5546380	D372896	5551078
5555550	5559471	D374013	5561436	D374227	D374424
5565881	5570453	5572223	5572224	5577267	5577268
D375932	D375952				


Other patents pending.



Motorola Limited Warranty For The United States PCS Subscriber Radiotelephone Products

I. What this warranty covers and for how long:

Motorola Inc. (Motorola) warrants the Motorola PCS Subscriber radiotelephone products and accessories against defects in material and workmanship under normal use and service for a period of time specified by the product's serial number from the date of installation.

 Installation in the case of radiotelephones, accessories or batteries that are not installed in a vehicle, means the date that the product is placed into subscriber service. Installation will be deemed no later than thirty (30) days from date of delivery of the product to you the owner.

The warranty time period is specified by the last digit of the mechanical serial number found on each PCS product. Products sold under this warranty may have either a "P," "Y," "A," "B," "C," or "D" or nothing in the eleventh position of the serial number. If there is no letter or an "A," the product comes with a (1) one year warranty. Products that have a "D" have a (2) two year warranty. Products that have a "Y" or a (B) have a (3) three year warranty, and products that have a "P" or a "C" have a (5) five year warranty commencing from the date of installation. The warranty time period for the radiotelephone accessories and batteries is as follows:

PCS portable telephone batteries	1 year
Carrying cases	Defect free at time of shipment
Other radiotelephone accessories	1 year

Motorola, at its option, will, at no charge, either repair, replace, or refund the purchase price of the PCS Subscriber radiotelephone product during the warranty period, provided it is returned in accordance with the terms of this warranty to the Motorola National Service Center or Service Providers service shop qualified by Motorola. Repair, at Motorola's option, may include the replacement of parts or boards with functionally equivalent reconditioned or new parts or boards. Replaced parts or accessories,

batteries, or boards are warranted for the balance of the original time period. All returned accessories, batteries, parts and PCS telephone equipment shall become the property of Motorola.

II. Warranty Conditions;

This express limited warranty is extended by Motorola to the original subscriber buyer or lessee only and is not assignable or transferable to subsequent subscriber buyers or lessees. This is the complete warranty for PCS Subscriber Radiotelephone Products by Motorola, Motorola assumes no obligation or liability for additions or modifications to this warranty unless made in writing and signed by an officer of Motorola. Unless made in separate written agreement between Motorola and you, Motorola does not warrant the installation, maintenance or service of the equipment, accessories, batteries or parts. Rechargeable batteries are warranted only if battery capacity falls below 80% of rated capacity, or the battery develops leakage. This warranty becomes void for all types of batteries if:

- the batteries are charged by other than Motorola approved battery charger specified for the charging of the battery.
- any of the seals on the battery are broken or show evidence of tampering.
- the battery is used in equipment or service other than the PCS radio telephone equipment for which it is specified.

Motorola cannot be held responsible in any way for any ancillary equipment not furnished by Motorola which is attached to or used in connection with Motorola's PCS Subscriber Radiotelephone Products, or for operation of our equipment with any ancillary equipment and all such equipment is expressly excluded from this warranty. Furthermore, Motorola cannot be responsible for any damage to Motorola equipment resulting from the use of ancillary equipment not furnished by Motorola for use with PCS subscriber equipment.



When the product is used in conjunction with ancillary or peripheral equipment not manufactured by Motorola, Motorola does not warrant the operation of the product /peripheral combination, and Motorola will honor no warranty claim where the product is used in such a combination and it is determined by Motorola that there is no fault with the Motorola product. Motorola specifically disclaims any responsibility for any damage caused in any way by the use of portable radiotelephone accessories and peripherals (specific examples include, but are not limited to: batteries, chargers, adapters, and power supplies) when such accessories and peripherals are not manufactured or supplied by Motorola, Motorola disclaims liability for range, coverage, availability, or operation of the PCS System which is provided by the Service Provider.

III What This Warranty Does Not Cover:

- a.** Defects or damage resulting from use of the product in other than its normal and customary manner,
- b.** Defects or damage from misuse, accident or neglect.
- c.** Defects or damage from improper testing, operation, maintenance, installation, adjustment, or any alteration or modification of any kind.
- d.** Breakage or damage to antennas unless caused directly by defects in material or workmanship.
- e.** Products disassembled or repaired in such a manner as to adversely affect performance or prevent adequate inspection and testing to verify any warranty claim.
- f.** Products which have had the serial number removed or made illegible.
- g.** Defects or damage due to spills of food or liquid.
- h.** All plastic surfaces and all externally exposed part that are scratched or damaged due to customer normal use.
- i.** Products rented on a month-to-month basis.
- j.** The portable phone keypad assembly and displays are not covered after the first year.

IV How To Get Warranty Service:

To receive warranty service, present your equipment to the facility described below, along with your bill of sale or comparable substitute proof of sale or lease bearing the date of purchase, transceiver serial number, and place of purchase or installation if applicable.

Warranty service is available by returning Motorola branded Radiotelephone Products to a Motorola Service Center, authorized in writing by a Motorola Area Service Manager to perform warranty work on Motorola PCS Subscriber Radiotelephone Products. A Carrier or Distributor branded Radiotelephone Product may be returned to either

- a.** the specific service shop qualified by Motorola's National Service Center in writing and operated by or affiliated with the PCS Service Provider, or
- b.** a Motorola Authorized PCS Service Center.

In most cases the service shop which sold your PCS Radiotelephone and accessories will provide warranty service. If you need additional information, contact that shop, the customer service department of your Service Provider, or Motorola at the address at the end of this document.

The unit or accessories, together with any detachable parts such as antennas, battery packs, and chargers, must be delivered to a qualified Motorola Service Center, or a Motorola -qualified service shop, transportation and insurance prepaid. When sent or brought to the servicer, the Radiotelephone Product must be accompanied by your name, address, and telephone number, name of Service Provider, and a description of the problem.



V General Provisions:

This warranty sets forth our responsibilities regarding this product. Repair, replacement or refund of the purchase price at Motorola's option, is your exclusive remedy. This warranty is given in lieu of all other express warranties, implied warranties, including without limitation implied warranties of merchantability and fitness for a particular purpose, are limited to the duration of this limited warranty. Further, as the Service Provider is not controlled by Motorola, no warranty is made as to coverage, availability or grade of service provided by the Service Provider. In no event shall Motorola be liable for damages in excess of the purchase price of the PCS radiotelephone product, for any loss of use, loss of time, inconvenience, commercial loss, lost profit or savings or other incidental, special or consequential damages arising out of the use or inability to use such product, to the full extent such may be disclaimed by law.

VI. Patent And Software Provisions:

Motorola will defend at its own expense, any suit brought against you to the extent that it is based on a claim that the PCS Subscriber Radiotelephone Product parts infringes a United States patent, and Motorola will pay those cost and damages finally awarded against you in any such suit which are attributable to any such claim, but such defense and payments are conditioned on the following

- i. that Motorola will be notified promptly in writing by you of any notice of such claim; and
- ii. that Motorola will have sole control of the defense of such suit and all negotiation for its settlement or compromise: and
- iii. should the Radiotelephone, accessory, battery or parts become, or in Motorola's opinion be likely to become the subject of a claim of infringement of a United States Patent that you will permit Motorola, at its option and expense, either to procure for you the right to continue using the PCS Radiotelephone or parts or to replace or modify the same so that it becomes non-infringing or to grant you a credit for such PCS Radiotelephone or parts as depreciated and accept its return. The depreciation will be an equal amount per year over the lifetime of the

PCS Subscriber Radiotelephone, accessories, battery or parts as established by Motorola.

Motorola will have no liability to you with respect to any claim of patent infringement which is based upon the combination of the PCS Radiotelephone or parts furnished hereunder with software, apparatus or devices not furnished by Motorola which is attached to or used in connection with the PCS Radiotelephone; nor will Motorola have any liability for the use of ancillary equipment or software not furnished by Motorola. The foregoing states the entire liability of Motorola with respect to infringement of patents by the PCS Radiotelephone, accessories, batteries or any parts thereof.

Laws in the United States and other countries preserve for Motorola certain exclusive rights for copyrighted Motorola software such as the exclusive rights to reproduce in copies and distribute copies of such Motorola software. Motorola software may be copied into, used in and redistributed with only the PCS Subscriber Radiotelephone Product associated with such Motorola software. No other use, including without limitation disassembly, of such Motorola software or exercise of exclusive rights in such Motorola software is permitted.

VII. State Law Rights:

Some states do not allow the exclusion or limitation of incidental or consequential damages, or limitations on how long an implied warranty lasts, so the above limitations or exclusions may not apply to you.

This warranty gives you specific legal rights, and you may also have other rights which vary from state to state.



Index

- A**
 - Accessories 67
 - Accessory setup menu 60
 - Add entry
 - To phone memory 34, 64
 - To SIM card memory 34, 64
 - Adjust ring volume 49
 - Advice of charge 57
 - Alternate line service 49
 - Automatic answer 60
 - Automatic lock 50
 - Automatic redial 18
 - Available networks 54
- B**
 - Bar incoming calls 42
 - Bar outgoing calls 42
 - Batteries
 - Charging 11
 - Desktop charging 14
 - Disposal of 15
 - Fitting 12
 - Low battery warning 13
 - Maintaining 12
 - Removing 12
 - Battery charge indicator 10
 - Battery meter 38, 63
 - Battery saving mode 52
 - Blocked message 17, 51
 - Buttons
 - SIM card release 9
 - Smart button 9
 - Volume 9
- C**
 - Call barring 42
 - Canceling 42
 - Call charges
 - Displaying 65
 - In-call display 58
 - Setting 59
 - Viewing 59
 - Call Forwarding 65
 - Call forwarding 39
 - Call holding 40
 - Call metering 57
 - Call meters menu 57
 - Call related features menu 38
 - Call timers 58, 65
 - Call voicemail 46, 63
 - Call waiting 40
 - Calling a number 18
 - Calling an embedded number 46
 - Capacity
 - Checking battery capacity 38
 - Checking phone book capacity 35
 - Cell broadcast 47
 - Messages 45
 - Change bar password 42
 - Change greeting 52
 - Change SIM PIN2 code 51
 - Change unlock code 50
 - Characters 32
- Charge meters
 - Resetting 59
- Check capacity (of the phone book) 35
- Customizing quick access menu 66
- D**
 - Data
 - Accessories 67
 - Forwarding 40
 - Outgoing message type 48
 - Data and Fax Calls 23
 - Data calls
 - Accessories 67
 - Delete
 - Last ten calls 35
 - Message 46, 47
 - Phone book entries 34
 - Desktop charging of your battery 14
 - Detailed forwarding 40
 - Dialing phone book numbers 19
 - Display 10
 - Display characters 32
 - Displaying your own phone number 36
 - DTX 52
- E**
 - Editing 64
 - Editing messages 45
 - Email
 - Outgoing message type 48
 - Emergency calls 20
 - Ending a phone call 21



Entering characters	32	L	Sending SMS messages	47	
Erase name and number	34	Language selection	52	Messages menu	44
Extended menus	27, 52	Last ten calls	Mute car radio	60	
F		Made	Muting the phone	20, 64	
Fault finding	69	Received	35, 64	My phone number(s)	36
Fax		Lifetime timer	59	N	
Accessories	67	Lock now	50	Names	
Forwarding	40	Low battery warning	13	Entering	32
Outgoing message type	48	M	Finding	33, 63	
Find entry by location	33, 64	Making a phone call	18	Network search	55
Find entry by name	33, 63	Master clear	53	Network selection menu	54
Find new network	56	Master reset	53	Networks	
Fitting your battery	12	Menu navigation	25	Automatic search	55
Fixed dialing	36	Menus	Finding new networks	56	
Calling numbers	36	Accessory setup menu	60	Manual search	55
One-touch dial	37	Call meters menu	57	New Security Code	52
Viewing list	36	Call related features menu	38	O	
Forwarding		Messages menu	44	One-touch dialing	19, 64
Canceling	40	Network selection menu	54	Setting	37
Data calls	40	Options menu	29	Options menu	29
Fax calls	40	Personalized menus	27	Outgoing messages	47, 65
Unconditional	65	Phone book menu	30	P	
Voice calls	39	Phone setup menu	49	Paging	
When unavailable	39	Quick Access menu	63	Outgoing message type	48
I		Message editor	47, 64	Personal numbers	33
In use symbol	10	Message settings	48	Personalized menu	27
International phone calls	19	Messages	44	Phone book	
K		Call holding/call waiting messages	41	Add entry	34, 64
Key answer only	43, 65	Calling an embedded number	46	Call number	34
Keypad tones		Cell broadcast messages	45	Capacity	31
Selecting	52	Creating and editing	45	Deleting/erasing entries	34
		Reading SMS messages	45, 64	Dialing phone book numbers	19

Modify name or number	34	Reading SMS messages	64	Setup fixed dialing	37
Preventing access to	35	Received messages	46	Short menus	27
Phone book entry key	9	Receiving a phone call	21	Short message service symbol	10
Phone book lookup key	9	Redial		Short Message Services (SMS)	44, 64
Phone book menu	30	Automatic	18	Creating and editing	45
Phone calls		Last number called	19	Editing	47
Automatic redial	18	Regulations and precautions	71	Reading	45, 64
Dialing phone book numbers	19	Release button	9	Sending	47
Emergency calls	20	Removing your battery	12	Show battery meter	38, 63
Ending	21	Require SIM card PIN	50	Show call charges	57, 65
International	19	Restrict my phone number	38, 65	Show call timers	58, 65
Making	18	Return call	46	Show my ID	65
One-touch dialing	19	Ring or vibrate	50	Show services	35
Receiving	21	Ringer		Signal strength symbol	10
Phone lock now	64	Muting	64	SIM card	
Phone setup menu	49	Tones	50	Inserting	16
Phone status	53	Volume	64	PIN Code	17
Phone unlock code		Roam symbol	10	PIN code	17, 23, 50
Entering	17	S		PIN2 code	23, 51
Setting and changing	50	Safety	5	Release button	9
PIN code	17, 23	Safety timer	60	Removal	16
Entering	17	Security code	23	Smart button	9
Setting and changing	50	Changing	52	SMS messages	44
PIN2 code	23, 51	Security features	23	Special keys	9
Postscripting	31	Select keypad tones	52	Status review	53
Power/Status indicator	10	Select phone line	49	Symbols	10
Prevent access (to phone book)	35	Sending SMS messages	47	T	
Q		Service center	48	Timers	58
Quick access menu	63	Set audible call timers	58	Audible tones	58
Customizing	66	Set in-call display	58	In-call display	58
R		Set ringer tone	50	Lifetime	59
Read messages	45, 63	Setting up	36	Safety	60



Viewing	58
Tones	
Selecting keypad tones	52
Setting ringer tones	50
Troubleshooting	69
U	
Unblock code	23
Unlocking your phone	51
Unconditional Call Forwarding	65
Unlock code	23
Entering	17
Setting and changing	50
V	
Voicemail	
Calling	46
Number	48
Symbol	10
Volume	
Adjusting the ringer volume	49
Buttons	9
W	
Warranty	74
What to do if...	69
Y	
Your battery	11



Free Manuals Download Website

<http://myh66.com>

<http://usermanuals.us>

<http://www.somanuals.com>

<http://www.4manuals.cc>

<http://www.manual-lib.com>

<http://www.404manual.com>

<http://www.luxmanual.com>

<http://aubethermostatmanual.com>

Golf course search by state

<http://golfingnear.com>

Email search by domain

<http://emailbydomain.com>

Auto manuals search

<http://auto.somanuals.com>

TV manuals search

<http://tv.somanuals.com>