

# **Nokia C2-00 User Guide**

Issue 1.0

<b>Contents</b>		Write using traditional text input	18
		Use predictive text input	19
<b>Safety</b>	<b>4</b>	<b>Messaging</b>	<b>19</b>
<b>Your device in brief</b>	<b>5</b>	Send a message	19
Your dual SIM device	5	Save an attachment	20
Keys and parts	5	Retrieve a multimedia message	20
<b>Get started</b>	<b>6</b>	Listen to voice messages	21
Insert a SIM card and battery	6	Send an audio message	21
Insert a second SIM card	7	<b>Connectivity</b>	<b>21</b>
Insert a memory card	9	Bluetooth	21
Charge the battery	9	USB data cable	23
Switch the device on or off	10	<b>Clock</b>	<b>24</b>
GSM antenna	11	Change the time and date	24
Connect a headset	11	Alarm clock	24
Attach a strap	12	<b>Pictures and videos</b>	<b>25</b>
<b>Basic use</b>	<b>12</b>	Take a picture	25
Support	12	Record a video	25
Access codes	12	Send a picture or video	25
Set which SIM card to use	13	Organise files	26
Lock the keys	14	<b>Music and audio</b>	<b>26</b>
Copy contacts or pictures from your old device	14	Media player	26
Use your device without a SIM card	15	FM radio	27
<b>Calls</b>	<b>15</b>	<b>Web</b>	<b>29</b>
Make a call	15	About the web browser	29
View your missed calls	15	Browse the web	29
Call the last dialled number	16	Clear browsing history	30
Divert calls to your voice mailbox or another phone number	16	<b>Device management</b>	<b>30</b>
<b>Contacts</b>	<b>16</b>	Update device software using your device	30
Save a name and phone number	16	Update device software using your PC	31
Use speed dial	17	Restore original settings	32
Send your contact information	17	Back up your pictures and other content to a memory card	32
<b>Write text</b>	<b>18</b>	<b>Nokia original accessories</b>	<b>32</b>
Switch between text input modes	18		

Practical rules about accessories 32

Battery 33

**Protect the environment 33**

Save energy 33

Recycle 33

**Product and safety information 34**

### Safety

Read these simple guidelines. Not following them may be dangerous or illegal. Read the complete user guide for further information.

#### SWITCH OFF IN RESTRICTED AREAS



Switch the device off when mobile phone use is not allowed or when it may cause interference or danger, for example, in aircraft, near medical equipment, fuel, chemicals, or blasting areas.

#### ROAD SAFETY COMES FIRST



Obey all local laws. Always keep your hands free to operate the vehicle while driving. Your first consideration while driving should be road safety.

#### INTERFERENCE



All wireless devices may be susceptible to interference, which could affect performance.

#### QUALIFIED SERVICE



Only qualified personnel may install or repair this product.

#### BATTERIES, CHARGERS AND OTHER ACCESSORIES



Use only batteries, chargers, and other accessories approved by Nokia for use with this device. Do not connect incompatible products.

#### KEEP YOUR DEVICE DRY



Your device is not water-resistant. Keep it dry.

#### PROTECT YOUR HEARING



Listen to a headset at a moderate level, and do not hold the device near your ear when the loudspeaker is in use.

## Your device in brief

### Your dual SIM device

You can insert two SIM cards.

### Some benefits of a dual SIM device

- You can make savings when you use services from different service providers.
- Use one phone number for personal calls and another for work, but carry only one device.
- Avoid network coverage variation between service providers.

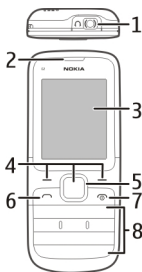
Both SIM cards are available at the same time when the device is not being used, but while one SIM card is active, for example, making a call, sending or receiving a message, or transferring data, the other is unavailable.

If there is no SIM card in the internal SIM card holder, demo mode is activated in your device.

Some features and operator services are only available when using the SIM card in the internal SIM card holder.

A GPRS connection cannot be open in the background. If an application is using a GPRS connection, and you return to the home screen or switch to another application, menu, or other view, the connection is automatically closed.

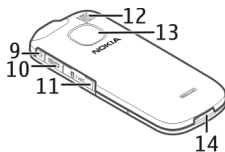
### Keys and parts



- 1 Headset connector/Nokia AV connector (3.5 mm)
- 2 Earpiece
- 3 Display
- 4 Selection keys
- 5 Navi™ key (scroll key)

## 6 Get started

- 6 Call key
- 7 End/Power key
- 8 Keypad



- 9 Charger connector
- 10 Micro-USB connector
- 11 SIM card slot (SIM 2)
- 12 Loudspeaker
- 13 Camera lens
- 14 Microphone

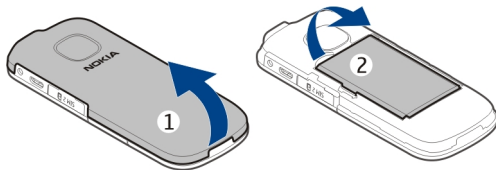
### Get started

#### Insert a SIM card and battery

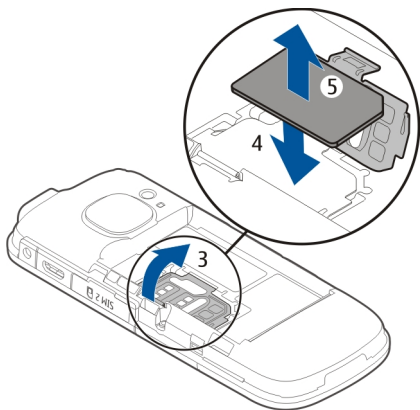
This device is intended for use with a BL-5C battery. Always use original Nokia batteries.

If you only have one SIM card, insert the card into the internal SIM card holder.

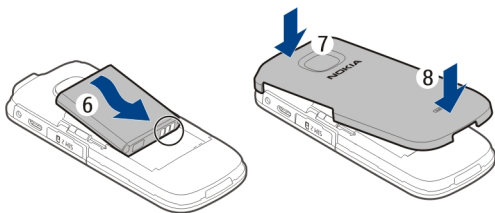
- 1 Place your finger in the recess at the bottom of the device, and carefully lift and remove the back cover (1).
- 2 If the battery is inserted, lift it out (2).



- 3 Open the SIM card holder (3), and insert or remove the SIM card (4 or 5). Make sure the contact area of the card is facing down.



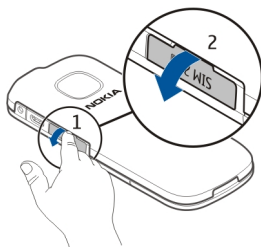
- 4 Line up the contacts of the battery and the battery compartment, and insert the battery (6). To replace the back cover, direct the top locking catches toward their slots (7), and press down until the cover locks into place (8).



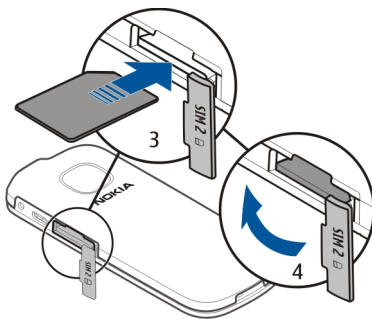
### Insert a second SIM card

Have a second SIM card, but want to keep using your main SIM card? You can insert or remove a second SIM card without switching the device off.

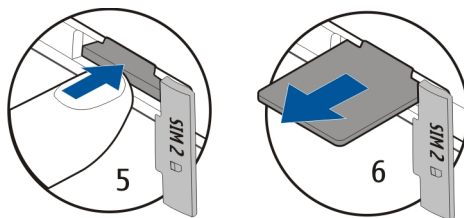
- 1 Open the cover of the external SIM card slot (1, 2), marked with **SIM 2**.



- 2 Insert the SIM card (3). Make sure the contact area of the card is facing down. Push the card in, until it locks into place. Close the cover (4).



### Remove the second SIM card

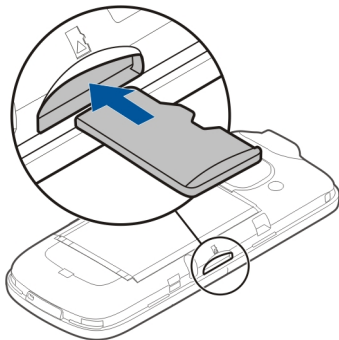




## Insert a memory card


Use only compatible memory cards approved by Nokia for use with this device. Incompatible cards may damage the card and the device and corrupt data stored on the card.

Your device supports memory cards with a capacity of up to 32 GB.



- 1 Remove the back cover.
- 2 Make sure the contact area of the card is facing down. Push the card in, until it locks into place.
- 3 Replace the back cover.

## Remove the memory card

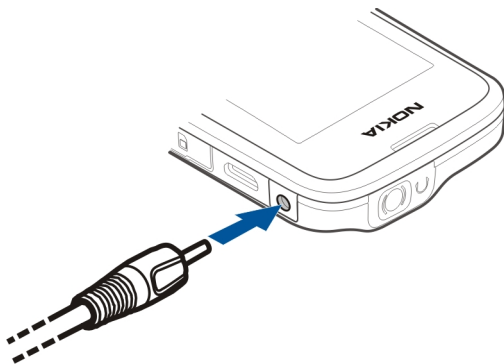
 **Important:** Do not remove the memory card when an application is using it. Doing so may damage the memory card and the device, and corrupt data stored on the card.

You can remove or replace the memory card without switching the device off.

- 1 Remove the back cover.
- 2 Push the card in, until it is released, and pull the card out.
- 3 Replace the back cover.

## Charge the battery

Your battery has been partially charged at the factory, but you may need to recharge it before you can switch on your device for the first time. If the device indicates a low charge, do the following:




- 1 Connect the charger to a wall outlet.
- 2 Connect the charger to the device.
- 3 When the device indicates a full charge, disconnect the charger from the device, then from the wall outlet.

You do not need to charge the battery for a specific length of time, and you can use the device while it is charging.

If the battery is completely discharged, it may take several minutes before the charging indicator appears on the display or before any calls can be made.

If the battery has not been used for a long time, to begin charging, you may need to connect the charger, then disconnect and reconnect it.

### Switch the device on or off

Press and hold the power key .



You may be prompted to get the configuration settings from your service provider (network service). For more information, contact your service provider.

## GSM antenna



The figure shows the GSM antenna area marked in grey.

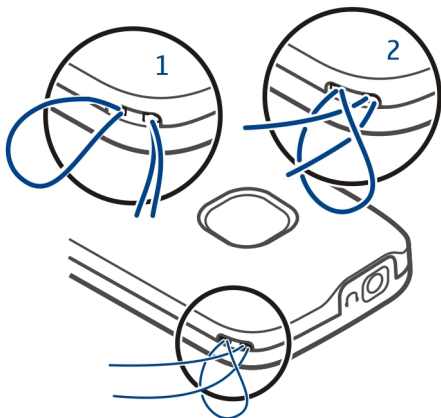
Avoid touching the antenna area unnecessarily while the antenna is transmitting or receiving. Contact with antennas affects the communication quality and may cause a higher power level during operation and may reduce the battery life.

## Connect a headset



Do not connect products that create an output signal as this may cause damage to the device. Do not connect any voltage source to the Nokia AV connector. If you connect an external device or headset, other than those approved by Nokia for use with this device, to the Nokia AV connector, pay special attention to volume levels.

### Attach a strap



Straps may be available separately.

### Basic use

#### Support

When you want to learn more about how to use your product or you are unsure how your device should function, go to [www.nokia.com/support](http://www.nokia.com/support), or using a mobile device, [nokia.mobi/support](http://nokia.mobi/support).

If this does not resolve your issue, do one of the following:

- Reboot your device. Switch off the device, and remove the battery. After about a minute, replace the battery, and switch on the device.
- Restore the original factory settings
- Update your device software

If your issue remains unsolved, contact Nokia for repair options. Go to [www.nokia-asia.com/repair](http://www.nokia-asia.com/repair). Before sending your device for repair, always back up your device data.

#### Access codes

Select **Menu > Settings > Security > Access codes**.

PIN or PIN2 code	These protect your SIM card against unauthorised use or are required to access some features.
------------------	---

(4-8 digits)	<p>If not supplied with the card or you forget the codes, contact your service provider.</p> <p>You can set your device to ask for the PIN code when you switch it on.</p> <p>If you enter the code incorrectly three times in a row, you need to unblock the code with the PUK or PUK2 code.</p> <p>The module PIN is required to access the information in the security module of your SIM card. The signing PIN may be required for the digital signature.</p>
PUK or PUK2 code (8 digits)	<p>These are required to unblock a PIN or PIN2 code.</p> <p>If not supplied with your SIM card, contact your service provider.</p>
Security code (5–10 digits)	<p>This protects your device against unauthorised use.</p> <p>You can set your device to ask for the security code that you define. The default security code is 12345.</p> <p>Keep the code secret and in a safe place, separate from your device.</p> <p>If you forget the code and your device is locked, your device will require service. Additional charges may apply, and all the personal data in your device may be deleted.</p> <p>For more information, contact a Nokia Care Centre or your device dealer.</p>
Barring password (4 digits)	<p>This is required for call barring services.</p> <p>For more information, contact your service provider.</p>

### Set which SIM card to use

You can set which SIM card to use for outgoing calls or messages. If you name your SIM cards, you can see at a glance which is, for example, for work and which is for personal use.

Select **Menu** > **SIM manager** or **Menu** > **Settings** > **SIM manager**.

Select **SIM1** or **SIM2**. The preferred SIM card is used by default for all outgoing communication, for example, calls and messages.

To be prompted to select a SIM card before, for example, making a call or sending a text message, select **Ask every time**.

### Rename a SIM card

Select **Options** > **Rename**.

**Tip:** To open the SIM manager from the home screen, press and hold \*.

### Lock the keys

To avoid accidentally making a call when your device is in your pocket or bag, lock the keys.

Select **Menu**, and then press \*.

### Unlock the keys and screen

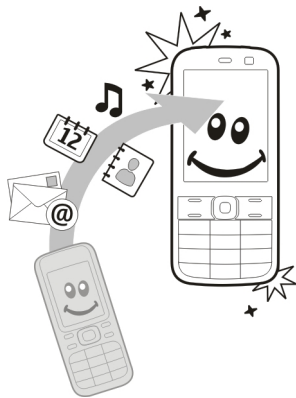
Select **Unlock**, and press \*.

### Set the keys to lock automatically

- 1 Select **Menu** > **Settings and Device** > **Automatic keyguard** > **Automatic keyguard on**.
- 2 Define the length of time after which the keys are locked automatically.

### Copy contacts or pictures from your old device

Want to copy your content from your previous compatible Nokia device and start using your new device quickly? You can copy, for example, contacts, calendar entries, and pictures to your new device, free of charge.



- 1 Activate Bluetooth in both devices.

Select **Menu** > **Settings** > **Connectivity** > **Bluetooth**.

- 2 Connect the devices.
- 3 Select **Menu** > **Settings** > **Sync and backup**.
- 4 Select **Phone switch** > **Copy to this**.
- 5 Select the content to copy and **Done**.
- 6 Select your previous device from the list.
- 7 If the other device requires a passcode, enter the passcode. The passcode, which you can define yourself, must be entered in both devices. The passcode in some devices is fixed. For details, see the user guide of the device.  
The passcode is valid only for the current connection.
- 8 If prompted, allow connection and copying requests.

### Use your device without a SIM card

Do your children want to play with your device, but you don't want them to accidentally make a call? Some features of your device, such as games and the calendar, may be used without inserting a SIM card. Features that are dimmed in the menus cannot be used.

## Calls

### Make a call

- 1 On the home screen, enter the phone number.  
To delete a number, select **Clear**.  
For international calls, select \* twice for the + character (which replaces the international access code), and enter the country code, area code (omit the leading zero if necessary), and phone number.
- 2 Press the call key.
- 3 If prompted, select the SIM card to use.
- 4 To end the call, press the end key.

When you receive a call, the SIM card in use is indicated.

### View your missed calls

Want to see who made the call you missed?

On the home screen, select **View**. The caller's name is displayed, if stored in the contacts list.

Missed and received calls are logged only if supported by the network, and the device is switched on and within the network service area.

### Call back the contact or number

Go to the contact or number, and press the call key.

### View the missed calls later

Select **Menu > Log and Missed calls**.

### Call the last dialled number

Trying to call someone, but they are not answering? It is easy to call them again.

- 1 On the home screen, press the call key.
- 2 Go to the number, and press the call key.  
If prompted, select the SIM card to use.

### Divert calls to your voice mailbox or another phone number

When you cannot answer, you can divert your calls to your voice mailbox or to another number (network service).

- 1 Select **Menu > Settings > Call > Call divert**.
- 2 Select the SIM card to use.
- 3 Select when to divert the incoming calls:

**All voice calls** — Divert all incoming voice calls.

**If busy** — Divert voice calls when busy.

**If not answered** — Divert voice calls only when not answered.

**If out of reach** — Divert voice calls when the device is switched off or out of network coverage for a certain period.

**If not available** — Divert voice calls when not answered, or the device is busy, or switched off, or out of network coverage.

- 4 Select **Activate > To voice mailbox or To other number**.
- 5 If **If not answered** or **If not available** is selected, set the length of time after which a call is forwarded.

## Contacts

### Save a name and phone number

Select **Menu > Contacts**.

Select **Add new**.

If prompted, select where to save the contact.



### Add or edit the details of a contact

- 1 Select **Names** and a contact.
- 2 Select **Options** > **Add detail**.

**Tip:** To add a ringtone or picture for a contact, select the contact and **Options** > **Add detail** > **Multimedia**.

### Use speed dial

You can quickly call your friends and family when you assign your most-used phone numbers to the number keys of your device.

You can only use speed dials for the contacts stored on your device or on the SIM card in the internal SIM card holder.

Select **Menu** > **Contacts** > **More** > **Speed dials**.

### Assign a phone number to a number key

- 1 Go to a number key, and select **Assign**. 1 is reserved for the voice mailbox.
- 2 Enter a number or search for a contact.

### Remove or change a phone number assigned to a number key

Go to a number key, and select **Options** > **Delete** or **Change**.

### Make a call

On the home screen, press and hold a number key.

### Deactivate speed dialling

Select **Menu** > **Settings and Call** > **Speed dialling**.

### Send your contact information

Want to send your phone number or mail address to a person you just met? Add your own contact information to your contacts list, and send a business card to the person.

Select **Menu** > **Contacts and Names**.

- 1 Select the contacts list entry that contains your information.
- 2 Select **Options** > **More** > **Business card** and the sending type.

### Save a received business card

Select **Show** > **Save**.

### Write text

#### Switch between text input modes

When writing text, you can use traditional  or predictive  text input.

Abc, abc, and ABC indicate the character cases. 123 indicates that number mode is activated.

#### Activate or deactivate predictive text input mode

Select **Options** > **Prediction** > **Prediction on** or **Prediction off**. Not all languages are supported by predictive text input.

#### Switch between character cases

Press #.

#### Activate number mode

Press and hold #, and select **Number mode**. To return to letter mode, press and hold #.

**Tip:** To quickly enter an individual number, press and hold the number key.

#### Set the writing language

Select **Options** > **Writing language**.

**Tip:** To activate number mode, activate or deactivate predictive text input mode, or set the writing language, you can also press and hold #, and select the appropriate option.

#### Write using traditional text input

- 1 Press a number key (2-9) repeatedly, until the desired character is displayed.
- 2 Insert the next character. If it is located on the same key, wait until the cursor is displayed, or move the cursor forward.

The available characters depend on the selected writing language.

#### Move the cursor

Scroll left or right.

#### Insert a common punctuation mark

Press **1** repeatedly.

#### Insert a special character

Press \*, and select the desired character.

## Insert a space

Press **0**.

## Use predictive text input

### Write using predictive text input

The built-in dictionary suggests words as you press the number keys.

- 1 Press each number key (2–9) once for each character.
- 2 Press **\*** repeatedly, and select the desired word from the list.
- 3 To confirm the word, move the cursor forward.

### Add a missing word to the dictionary

If **?** is displayed when you enter a word using predictive text input, the word is not in the dictionary. You can add it to the built-in dictionary.

- 1 Select **Spell**.
- 2 Write the word using traditional text input.
- 3 Select **Save**.

### Write a compound word

- 1 Write the first part of the word. To confirm the word, move the cursor forward.
- 2 Write the next part of the word, and confirm again.

## Messaging

### Send a message

Keep in touch with your family and friends with text and multimedia messages. You can attach your pictures, videos, and business cards to your message.

Select **Menu** > **Messaging**.

- 1 Select **Create message**.
- 2 Write your message.
- 3 To add an attachment, select **Options** > **Insert object**.
- 4 Select **Send to**.
- 5 To enter a phone number or mail address manually, select **Number or mail**. Enter a phone number, or select **Mail**, and enter a mail address. To select a recipient or a contact group, select **Contacts** or **Contact groups**.
- 6 Select **Send**.  
If prompted, select the SIM card to use.

**Tip:** To insert a special character or smiley, select **Options** > **Insert symbol**.

Sending a message with an attachment may be more expensive than sending a normal text message. For more information, contact your service provider.

You can send text messages that are longer than the character limit for a single message. Longer messages are sent as two or more messages. Your service provider may charge accordingly.

Characters with accents, other marks, or some language options, take more space, and limit the number of characters that can be sent in a single message.

If the item you inserted in a multimedia message is too large for the network, the device may automatically reduce the size.

Only compatible devices can receive and display multimedia messages. Messages may look different in different devices.

### Save an attachment

You can save attachments from multimedia and mail messages to your device.

Select **Menu** > **Messaging**.

#### Save an attachment

- 1 Open the message.
- 2 Select **Options** > **Show contents**.
- 3 Select the desired file and **Options** > **Save**.

#### Save a mail attachment

- 1 Open the mail.
- 2 Select the attachment.
- 3 Select **Save**.

Pictures and videos are saved in Gallery.

### Retrieve a multimedia message

Did you receive a notification of a multimedia message waiting to be retrieved?

- 1 Select **Menu** > **Messaging** > **Inbox**.
- 2 Open the notification, and select **Retrieve**. The multimedia message is downloaded to your device.

### Stop receiving multimedia message notifications

- 1 Select **Menu** > **Messaging** > **More** > **Message settings** > **Multimedia msgs..**

- 2 Select **SIM1** or **SIM2**.
- 3 Select **MMS reception > Off**.

### Listen to voice messages

When you can't answer, you can divert calls to your voice mailbox and listen to your messages later.

You may need a voice mailbox subscription. For more information on this network service, contact your service provider.



You can only use the voice mailbox with the SIM card in the internal SIM card holder.

- 1 Select **Menu > Messaging > More > Voice messages and Voice mailbox number**.
- 2 Enter your voice mailbox number, and select **OK**.
- 3 To call your voice mailbox, on the home screen, press and hold **1**.

### Send an audio message

Don't have time to write a text message? Record and send an audio message instead!

Select **Menu > Messaging**.

- 1 Select **More > Other messages > Audio message**.
- 2 To record your message, select .
- 3 To stop recording, select .
- 4 Select **Send to** and a contact.

## Connectivity

### Bluetooth

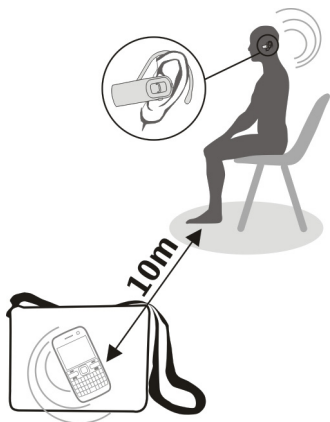
#### About Bluetooth connectivity

Select **Menu > Settings > Connectivity > Bluetooth**.

Use Bluetooth to connect wirelessly to compatible devices, such as other mobile devices, computers, headsets, and car kits.

You can also send items from your device, copy files from your compatible PC, and print using a compatible printer.

Bluetooth uses radio waves to connect, and devices must be within 10 metres (33 feet) of each other. Obstructions, such as walls or other electronic devices, can cause interference.



### Connect to a wireless headset

Want to keep working at your computer during a call? Use a wireless headset. You can also answer a call, even if your device is not directly at hand.

- 1 Select **Menu > Settings > Connectivity > Bluetooth** and **Bluetooth > On**.
- 2 Switch the headset on.
- 3 To pair your device and the headset, select **Connect to audio accessories**.
- 4 Select the headset.
- 5 You may need to enter a passcode. For details, see the user guide of the headset.

**Tip:** You can set your device to connect automatically to your Bluetooth headset, once you have paired it for the first time.

### Send a picture or other content to another device using Bluetooth

Use Bluetooth to send pictures, videos, business cards, and other content created by you to your computer or a friend's compatible device.

- 1 Select the item to send.
- 2 Select **Options > Send > Via Bluetooth**.
- 3 Select the device to connect to. If the desired device is not displayed, select **New search**, to search for it. Bluetooth devices within range are displayed.

- 4 If the other device requires a passcode, enter the passcode. The passcode, which you can define yourself, must be entered in both devices. The passcode in some devices is fixed. For details, see the user guide of the device.  
The passcode is valid only for the current connection.

The available options may vary.

### **Connect automatically to a paired device**

Do you regularly want to connect your device to another Bluetooth device, such as a car kit, headset, or your PC? You can set your device to connect automatically.

Select **Menu** > **Settings** > **Connectivity** > **Bluetooth and Paired devices**.

- 1 Select the device to connect to automatically.
- 2 Select **Options** > **Settings** > **Auto-conn. without confirmation** > **Yes**.

### **Protect your device**

Do you want to secure who can see your device when using Bluetooth? You can control who can find and connect to your device.

Select **Menu** > **Settings** > **Connectivity** > **Bluetooth**.

#### **Prevent others from detecting your device**

Select **My device's visibility** > **Hidden**.

When your device is hidden, others can't detect it. However, paired devices can still connect to your device.

#### **Deactivate Bluetooth**

Select **Bluetooth** > **Off**.

Do not pair with or accept connection requests from an unknown device. This helps to protect your device from harmful content.

### **USB data cable**

#### **Copy content between your device and a computer**

You can use a USB data cable to copy your pictures and other content between your device and a compatible computer.

- 1 Use a compatible USB cable to connect your device to a computer.
- 2 Select from the following modes:

**Nokia Ovi Suite** — Nokia Ovi Suite is installed on your computer.

**Media transfer** — Nokia Ovi Suite is not installed on your computer. If you want to connect your device to a home entertainment system or printer, use this mode.

**Mass storage** — Nokia Ovi Suite is not installed on your computer. The device is displayed as a portable device on your computer. If you want to connect your device to other devices, such as a home or car stereo, use this mode.

- 3 To copy the content, use the file manager of the computer.  
To copy your contacts, music files, videos, or pictures, use Nokia Ovi Suite.

You can only use Nokia Ovi Suite with the SIM card in the internal SIM card holder.

### Clock

#### Change the time and date

Select **Menu > Settings and Date and time**.

#### Change the time zone when travelling

- 1 Select **Date and time settings > Time zone:**.
- 2 To select the time zone of your location, scroll left or right.
- 3 Select **Save**.

The time and date are set according to the time zone. This makes sure that your device displays the correct sending time of received text or multimedia messages.

For example, GMT +8 denotes the time zone for Singapore, Malaysia, and Philippines, 8 hours east of Greenwich, London (UK).

#### Alarm clock

You can set an alarm to sound at a desired time.

#### Set the alarm

- 1 Select **Menu > Applications > Alarm clock**.
- 2 To activate the alarm, scroll left or right.
- 3 Enter the alarm time.
- 4 To repeat an alarm on selected days of the week, select **Options > Repeat days and the days**.
- 5 To select the alarm tone, select **Options > Alarm tone**. If you select the radio as the alarm tone, connect the headset to the device.
- 6 To set the length of the snooze time-out period, select **Options > Snooze time-out**.
- 7 Select **Save**.



## Stop the alarm

Select **Stop**. If you let the alarm sound for a minute or select **Snooze**, the alarm stops for the length of the snooze time-out period, then resumes.

## Pictures and videos

### Take a picture

- 1 Select **Menu** > **Photos** > **Camera**.
- 2 To zoom in or out, scroll up or down.
- 3 Select **Capture**.

The pictures are saved in **Menu** > **Photos** > **My photos**.

### Close the camera

Press the end key.

### Record a video

Besides taking pictures with your device, you can also capture your special moments as videos.

Select **Menu** > **Photos** > **Video camera**.

- 1 To switch from image mode to video mode, if necessary, select **Options** > **Video camera**.
- 2 To start recording, select **Record**.  
To zoom in or out, scroll up or down.
- 3 To stop the recording, select **Stop**.

Videos are saved in **Menu** > **Photos** > **My videos**.

### Close the camera

Press the end key.

### Send a picture or video

Want to share your pictures and videos with friends and family? Send a multimedia message or send a picture using Bluetooth.

Select **Menu** > **Photos**.

### Send a picture

- 1 Select the folder containing the picture.

- 2 Select the picture to send.  
To send more than one picture, select **Options** > **Mark**, and mark the desired pictures.
- 3 Select **Options** > **Send** or **Send marked** and the desired sending method.

### Send a video

- 1 Select the folder containing the video.
- 2 Select **Options** > **Mark**, and mark the video. You can mark several videos to send.
- 3 Select **Options** > **Send marked** and the desired sending method.

### Organise files

You can move, copy, delete, or create new files and folders in your device memory or on the memory card. If you organise your files into their own folders, it might help you find the files in future.

Select **Menu** > **Applications** > **Gallery**.

### Create a new folder

In the folder where you want to create a sub-folder, select **Options** > **Add folder**.

### Copy or move a file to a folder

Scroll to the file, and select **Options** > **Move**.

**Tip:** You can also play music or videos, or view pictures in Gallery.

## Music and audio

### Media player

#### Play a song

Play music stored in the device memory or on the memory card.

Select **Menu** > **Music** > **My music** and **All songs**.

- 1 Select a song.
- 2 Select **Play**.
- 3 To pause or resume playing, press the scroll key.

#### Skip to the beginning of the current song

Scroll left.

#### Skip to the previous song

Scroll left twice.

**Skip to the next song**

Scroll right.

**Fast-forward or rewind**

Press and hold the scroll key to the right or left.

**Change the volume**

Scroll up or down.

**Mute or unmute the music player**

Press #.

**Close the music player**

Press the end key.

**Set the music player to play in the background**

Select **Options** > **Play in backgr..**

**Close the music player when it is playing in the background**

Press and hold the end key.

**Play a video**

Play videos stored in the device memory or on the memory card.

Select **Menu** > **Music** > **My music and Videos**.

- 1 Select a video.
- 2 Select **Play**.
- 3 To pause or resume playing, press the scroll key.

**Fast-forward or rewind**

Press and hold the scroll key to the right or left.

**Close the media player**

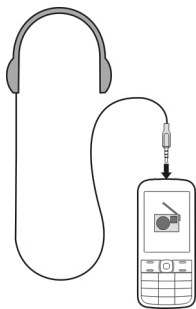
Press the end key.

**FM radio****About the FM radio**

Select **Menu** > **Music** > **Radio**.

You can listen to FM radio stations using your device - just plug in a headset, and select a station!

To listen to the radio, you need to attach a compatible headset to the device. The headset acts as an antenna.



It is not possible to listen to the radio through a Bluetooth headset.

### **Listen to the radio**

Select **Menu > Music > Radio**.

### **Change the volume**

Scroll up or down.

### **Close the radio**

Press and hold the end key.

### **Set the radio to play in the background**

Select **Options > Play in backgr..**

### **Close the radio when it is playing in the background**

Press and hold the end key.

### **Find and save radio stations**

Search for your favourite radio stations, and save them, so you can easily listen to them later.

Select **Menu > Music > Radio**.

### **Search for the next available station**

Press and hold the scroll key left or right.

### Save a station

Select **Options** > **Save station**.

### Automatically search for radio stations

Select **Options** > **Search stations**. For best results, search when outdoors or near a window.

### Switch to a saved station

Scroll left or right.

### Rename a station

- 1 Select **Options** > **Stations**.
- 2 Select the station and **Options** > **Rename**.

### Automatically switch to a frequency with better reception

- 1 Select **Options** > **Settings** > **RDS** > **On**.
- 2 Select **Options** > **Settings** > **Auto-frequency** > **On**.

**Tip:** To access a station directly from the saved station list, press the number key that corresponds to the number of the station.

## Web

### About the web browser

Select **Menu** > **Internet**.

You can view web pages on the internet with your device web browser.

To browse the web, you must have an internet access point configured in your device and be connected to a network.

If prompted, select the SIM card to use.

For the availability of these services, pricing, and instructions, contact your service provider.

You may receive the configuration settings required for browsing as a configuration message from your service provider.

### Browse the web

Select **Menu** > **Internet**.

### Go to a website

Select **Go to address**, and enter the address.

### Clear browsing history

Select **Menu > Internet**.

A cache is a memory location that is used to store data temporarily. If you have, or have tried to, access confidential information or a secure service, requiring passwords, clear the cache after each use.

### Clear the cache or cookies

While browsing a website, select **Options > Tools > Clear the cache or Clear cookies**.

### Prevent cookies from being stored

Select **Options > Settings > Security > Cookies**.

## Device management

### Update device software using your device

Want to improve the performance of your device and get application updates and great new features? Update the software regularly to get the most out of your device. You can also set your device to automatically check for updates.

Using the service or downloading content may cause transfer of large amounts of data, which may result in data traffic costs.

You can only update your software when using the SIM card in the internal SIM card holder.

Make sure that the device battery has enough power, or connect the charger before starting the update.

Select **Menu > Settings**.



- 1 Select **Device > Device updates**.
- 2 To display the current software version and check whether an update is available, select **Current software details**.
- 3 To download and install a software update, select **Download device software**. Follow the displayed instructions.
- 4 If the installation was cancelled after the download, select **Install software update**.

The software update may take several minutes. If there are problems with the installation, contact your service provider.

### **Check for software updates automatically**

Select **Automatic SW update check**, and define how often to check for new software updates.

Your service provider may send device software updates over the air directly to your device. For more information on this network service, contact your service provider.

### **Update device software using your PC**

You can use the Nokia Ovi Suite PC application to update your device software. You need a compatible PC, a high-speed internet connection, and a compatible USB data cable to connect your device to the PC.

To get more information and to download the Nokia Ovi Suite application, go to [www.ovi.com/suite](http://www.ovi.com/suite).

### Restore original settings

If your device is not working properly, you can reset some settings to their original values.

- 1 End all calls and connections.
- 2 Select **Menu > Settings and Restore factory sett. > Restore sett. only.**
- 3 Enter the security code.

This does not affect documents or files stored on your device.

After restoring the original settings, your device switches off and then on again. This may take longer than usual.

### Back up your pictures and other content to a memory card

Want to make sure you will not lose any important files? You can back up your device memory to a compatible memory card.

Select **Menu > Settings > Sync and backup.**

Select **Create backup.**

### Restore a backup

Select **Restore from backup.**

## Nokia original accessories

For availability of approved accessories, check with your dealer.



An extensive range of accessories is available for your device. For more details, see [www.nokia-asia.com/accessories](http://www.nokia-asia.com/accessories).

### Practical rules about accessories

- Keep all accessories out of the reach of small children.
- When you disconnect the power cord of any accessory, grasp and pull the plug, not the cord.



- Check regularly that accessories installed in a vehicle are mounted and are operating properly.
- Installation of any complex car accessories must be made by qualified personnel only.

## Battery

Type: BL-5C

Talk time:

Up to 11.5 hours.

Standby:

Up to 570 hours.



**Important:** Battery talk and stand-by times are estimates and only possible under optimal network conditions. Actual battery talk and standby times depend on SIM cards, features used, battery age and condition, temperatures to which battery is exposed, network conditions, and many other factors, and may be significantly shorter than those specified above. Ringing tones, hands free call handling, use in digital mode, and other features will also consume the battery, and the amount of time a device is used for calls will affect its stand-by time. Likewise, the amount of time that the device is turned on and in the standby mode will affect its talk time.

## Protect the environment

### Save energy

You do not need to charge your battery so often if you do the following:

- Close applications and data connections, such as your Bluetooth connection, when not in use.
- Deactivate unnecessary sounds, such as key tones.

### Recycle



When this device has reached the end of its working life, all of its materials can be recovered as materials and energy. To guarantee the correct disposal and reuse, Nokia co-operates with its partners through a program called We:recycle. For information on

how to recycle your old Nokia products and where to find collection sites, go to [www.nokia.com/werecycle](http://www.nokia.com/werecycle), or using a mobile device, [nokia.mobi/werecycle](http://nokia.mobi/werecycle), or call the Nokia Contact Center.

Recycle packaging and user guides at your local recycling scheme.

For more information on the environmental attributes of your device, go to [www.nokia.com/ecodeclaration](http://www.nokia.com/ecodeclaration).

## Product and safety information

### General information

#### Network services and costs

Your device is approved for use on the EGSM 900 and 1800 MHz networks. To use the device, you need a subscription with a service provider.

Using network services and downloading content to your device requires a network connection and may result in data traffic costs. Some product features require support from the network, and you may need to subscribe to them.

#### Take care of your device

Handle your device, battery, charger and accessories with care. The following suggestions help you protect your warranty coverage.

- Keep the device dry. Precipitation, humidity, and all types of liquids or moisture can contain minerals that corrode electronic circuits. If your device gets wet, remove the battery, and allow the device to dry.
- Do not use or store the device in dusty or dirty areas. Moving parts and electronic components can be damaged.
- Do not store the device in high temperatures. High temperatures can shorten the life of the device, damage the battery, and warp or melt plastics.
- Do not store the device in cold temperatures. When the device warms to its normal temperature, moisture can form inside the device and damage electronic circuits.
- Do not attempt to open the device other than as instructed in the user guide.
- Unauthorised modifications may damage the device and violate regulations governing radio devices.
- Do not drop, knock, or shake the device. Rough handling can break internal circuit boards and mechanics.
- Only use a soft, clean, dry cloth to clean the surface of the device.
- Do not paint the device. Paint can clog the moving parts and prevent proper operation.
- Switch off the device and remove the battery from time to time for optimum performance.
- Keep your device away from magnets or magnetic fields.
- To keep your important data safe, store it in at least two separate places, such as your device, memory card, or computer, or write down important information.

### Recycle

Always return your used electronic products, batteries, and packaging materials to dedicated collection points. This way you help prevent uncontrolled waste disposal and promote the recycling of materials. Check product environmental information and how to recycle your Nokia products at [www.nokia.com/werecycle](http://www.nokia.com/werecycle), or with a mobile device, [nokia.mobi/werecycle](http://nokia.mobi/werecycle).

### About Digital Rights Management

When using this device, obey all laws and respect local customs, privacy and legitimate rights of others, including copyrights. Copyright protection may prevent you from copying, modifying, or transferring images, music, and other content.

Content owners may use different types of digital rights management (DRM) technologies to protect their intellectual property, including copyrights. This device uses various types of DRM software to access DRM-protected content. With this device you can access content protected with OMA DRM 1.0. If certain DRM software fails to protect the content, content owners may ask that such DRM software's ability to access new DRM-protected content be revoked. Revocation may also prevent renewal of such DRM-protected content already in your device. Revocation of such DRM software does not affect the use of content protected with other types of DRM or the use of non-DRM-protected content.

Digital rights management (DRM) protected content comes with an associated licence that defines your rights to use the content.

If your device has OMA DRM-protected content, to back up both the licences and the content, use the backup feature of Nokia Ovi Suite.

Other transfer methods may not transfer the licences which need to be restored with the content for you to be able to continue the use of OMA DRM-protected content after the device memory is formatted. You may also need to restore the licences in case the files on your device get corrupted.

If your device has WMDRM-protected content, both the licences and the content will be lost if the device memory is formatted. You may also lose the licences and the content if the files on your device get corrupted. Losing the licences or the content may limit your ability to use the same content on your device again. For more information, contact your service provider.

Some licences may be connected to a specific SIM card, and the protected content can be accessed only if the SIM card is inserted in the device.

## Batteries and chargers

### Battery and charger information

Your device is intended for use with a BL-5C rechargeable battery. Nokia may make additional battery models available for this device. Always use original Nokia batteries.

This device is intended for use when supplied with power from the following chargers: AC-3. The exact Nokia charger model number may vary depending on the plug type, identified by E, X, AR, U, A, C, K, or B.

The battery can be charged and discharged hundreds of times, but it will eventually wear out. When the talk and standby times are noticeably shorter than normal, replace the battery.



**Important:** Talk and standby times are estimates only. Actual times are affected by, for example, network conditions, device settings, features being used, battery condition, and temperature.

### Battery safety

Always switch the device off and disconnect the charger before removing the battery. When you unplug a charger or an accessory, hold and pull the plug, not the cord.

When your charger is not in use, unplug it from the electrical plug and the device. Do not leave a fully charged battery connected to a charger, as overcharging may shorten the battery's lifetime. If left unused, a fully charged battery will lose its charge over time.

Always keep the battery between 15°C and 25°C (59°F and 77°F). Extreme temperatures reduce the capacity and lifetime of the battery. A device with a hot or cold battery may not work temporarily.

Accidental short-circuiting can happen when a metallic object touches the metal strips on the battery, for example, if you carry a spare battery in your pocket. Short-circuiting may damage the battery or the connecting object.

Do not dispose of batteries in a fire as they may explode. Dispose of batteries according to local regulations. Recycle when possible. Do not dispose as household waste.

## 36 Product and safety information

---

Do not dismantle, cut, open, crush, bend, puncture, or shred cells or batteries. If a battery leaks, do not let battery liquid touch skin or eyes. If this happens, immediately flush the affected areas with water, or seek medical help.

Do not modify, remanufacture, attempt to insert foreign objects into the battery, or immerse or expose it to water or other liquids. Batteries may explode if damaged.

Use the battery and charger for their intended purposes only. Improper use, or use of unapproved batteries or incompatible chargers may present a risk of fire, explosion, or other hazard, and may invalidate any approval or warranty. If you believe the battery or charger is damaged, take it to a service centre for inspection before continuing to use it. Never use a damaged battery or charger. Only use the charger indoors.

### Nokia battery authentication guidelines

Always use original Nokia batteries for your safety. To help ensure that you are getting an original Nokia battery, purchase it from a Nokia authorised service centre or dealer, and check the hologram label.

#### Authenticate hologram

- 1 Look at the hologram. You should see the Nokia connecting hands symbol from one angle and the Nokia Original Accessories logo from the other angle.



- 2 Angle the hologram left, right, down, and up. You should see 1, 2, 3 and 4 dots on each side respectively.



However, this is not a total assurance of the authenticity of the battery. If you cannot confirm authenticity or if you have any reason to believe that your Nokia battery with the hologram on the label is not an authentic Nokia battery, stop using the battery and take it to the nearest Nokia authorised service centre or dealer.

To find out more about original Nokia batteries, go to [www.nokia.com/batterycheck](http://www.nokia.com/batterycheck).

#### Additional safety information

##### Make an emergency call

- 1 Make sure the device is switched on.
- 2 Check for adequate signal strength. You may also need to do the following:
  - Insert a SIM card.

- Deactivate call restrictions you have activated for your device, such as call barring, fixed dialling, or closed user group.
  - Make sure the offline or flight profile is not activated.
- 3 Press the end key repeatedly, until the home screen is displayed.
  - 4 Enter the official emergency number for your present location. Emergency call numbers vary by location.
  - 5 Press the call key.
  - 6 Give the necessary information as accurately as possible. Do not end the call until given permission to do so.



**Important:** Activate both cellular and internet calls, if your device supports internet calls. The device may attempt to make emergency calls both through cellular networks and through your internet call service provider. Connections in all conditions cannot be guaranteed. Never rely solely on any wireless device for essential communications like medical emergencies.

### Small children

Your device and its accessories are not toys. They may contain small parts. Keep them out of the reach of small children.

### Medical devices

Operation of radio transmitting equipment, including wireless phones, may interfere with the function of inadequately protected medical devices. Consult a physician or the manufacturer of the medical device to determine whether they are adequately shielded from external RF energy. Switch off your device when regulations posted instruct you to do so, for example, in hospitals.

### Implanted medical devices

Manufacturers of medical devices recommend a minimum separation of 15.3 centimetres (6 inches) between a wireless device and an implanted medical device, such as a pacemaker or implanted cardioverter defibrillator, to avoid potential interference with the medical device. Persons who have such devices should:

- Always keep the wireless device more than 15.3 centimetres (6 inches) from the medical device.
- Not carry the wireless device in a breast pocket.
- Hold the wireless device to the ear opposite the medical device.
- Turn the wireless device off if there is any reason to suspect that interference is taking place.
- Follow the manufacturer directions for the implanted medical device.

If you have any questions about using your wireless device with an implanted medical device, consult your health care provider.

### Hearing



#### Warning:

When you use the headset, your ability to hear outside sounds may be affected. Do not use the headset where it can endanger your safety.

Some wireless devices may interfere with some hearing aids.

### Operating environment

This device meets RF exposure guidelines in the normal use position at the ear or at least 1.5 centimetres (5/8 inch) away from the body. Any carry case, belt clip, or holder for body-worn operation should not contain metal and should position the device the above-stated distance from your body.

## 38 Copyright and other notices

---

To send data files or messages requires a quality connection to the network. Data files or messages may be delayed until such a connection is available. Follow the separation distance instructions until the transmission is completed.

### Vehicles

Radio signals may affect improperly installed or inadequately shielded electronic systems in motor vehicles such as electronic fuel injection, electronic antilock braking, electronic speed control, and air bag systems. For more information, check with the manufacturer of your vehicle or its equipment.

Only qualified personnel should install the device in a vehicle. Faulty installation or service may be dangerous and may invalidate your warranty. Check regularly that all wireless device equipment in your vehicle is mounted and operating properly. Do not store or carry flammable liquids, gases, or explosive materials in the same compartment as the device, its parts, or accessories. Remember that air bags inflate with great force. Do not place your device or accessories in the air bag deployment area.

Switch off your device before boarding an aircraft. The use of wireless devices in an aircraft may be dangerous to the operation of the aircraft and may be illegal.

### Potentially explosive environments

Switch off your device in any area with a potentially explosive atmosphere. Obey all posted instructions. Sparks in such areas could cause an explosion or fire resulting in bodily injury or death. Switch off the device at refuelling points such as near gas pumps at service stations. Observe restrictions in fuel depots, storage, and distribution areas; chemical plants; or where blasting operations are in progress. Areas with a potentially explosive atmosphere are often, but not always, clearly marked. They include areas where you would be advised to turn off your vehicle engine, below deck on boats, chemical transfer or storage facilities and where the air contains chemicals or particles such as grain, dust, or metal powders. You should check with the manufacturers of vehicles using liquefied petroleum gas (such as propane or butane) to determine if this device can be safely used in their vicinity.

### Certification information (SAR)

#### **This mobile device meets guidelines for exposure to radio waves.**

Your mobile device is a radio transmitter and receiver. It is designed not to exceed the limits for exposure to radio waves recommended by international guidelines. These guidelines were developed by the independent scientific organisation ICNIRP and include safety margins designed to assure the protection of all persons, regardless of age and health.

The exposure guidelines for mobile devices employ a unit of measurement known as the Specific Absorption Rate or SAR. The SAR limit stated in the ICNIRP guidelines is 2.0 watts/kilogram (W/kg) averaged over 10 grams of tissue. Tests for SAR are conducted using standard operating positions with the device transmitting at its highest certified power level in all tested frequency bands. The actual SAR level of an operating device can be below the maximum value because the device is designed to use only the power required to reach the network. That amount changes depending on a number of factors such as how close you are to a network base station.

The highest SAR value under the ICNIRP guidelines for use of the device at the ear is 0.63 W/kg.

Use of device accessories may result in different SAR values. SAR values may vary depending on national reporting and testing requirements and the network band. Additional SAR information may be provided under product information at [www.nokia.com](http://www.nokia.com).

## Copyright and other notices

DECLARATION OF CONFORMITY

CE 0434

Hereby, NOKIA CORPORATION declares that this RM-704 product is in compliance with the essential requirements and other relevant provisions of Directive 1999/5/EC. A copy of the Declaration of Conformity can be found at [http://www.nokia.com/phones/declaration\\_of\\_conformity/](http://www.nokia.com/phones/declaration_of_conformity/).

© 2011 Nokia. All rights reserved.

Nokia, Nokia Connecting People, and Navi are trademarks or registered trademarks of Nokia Corporation. Nokia tune is a sound mark of Nokia Corporation. Other product and company names mentioned herein may be trademarks or tradenames of their respective owners.

Reproduction, transfer, distribution, or storage of part or all of the contents in this document in any form without the prior written permission of Nokia is prohibited. Nokia operates a policy of continuous development. Nokia reserves the right to make changes and improvements to any of the products described in this document without prior notice.



Includes RSA BSAFE cryptographic or security protocol software from RSA Security.



Java is a trademark of Sun Microsystems, Inc.

This product is licensed under the MPEG-4 Visual Patent Portfolio License (i) for personal and noncommercial use in connection with information which has been encoded in compliance with the MPEG-4 Visual Standard by a consumer engaged in a personal and noncommercial activity and (ii) for use in connection with MPEG-4 video provided by a licensed video provider. No license is granted or shall be implied for any other use. Additional information, including that related to promotional, internal, and commercial uses, may be obtained from MPEG LA, LLC. See <http://www.mpegla.com>.

To the maximum extent permitted by applicable law, under no circumstances shall Nokia or any of its licensors be responsible for any loss of data or income or any special, incidental, consequential or indirect damages howsoever caused.

The contents of this document are provided "as is". Except as required by applicable law, no warranties of any kind, either express or implied, including, but not limited to, the implied warranties of merchantability and fitness for a particular purpose, are made in relation to the accuracy, reliability or contents of this document. Nokia reserves the right to revise this document or withdraw it at any time without prior notice.

The availability of products, features, applications and services may vary by region. For more information, contact your Nokia dealer or your service provider. This device may contain commodities, technology or software subject to export laws and regulations from the US and other countries. Diversion contrary to law is prohibited.

Nokia does not provide a warranty for or take any responsibility for the functionality, content, or end-user support of third-party applications provided with your device. By using an application, you acknowledge that the application is provided as is. Nokia does not make any representations, provide a warranty, or take any responsibility for the functionality, content, or end-user support of third-party applications provided with your device.

## Free Manuals Download Website

<http://myh66.com>

<http://usermanuals.us>

<http://www.somanuals.com>

<http://www.4manuals.cc>

<http://www.manual-lib.com>

<http://www.404manual.com>

<http://www.luxmanual.com>

<http://aubethermostatmanual.com>

Golf course search by state

<http://golfingnear.com>

Email search by domain

<http://emailbydomain.com>

Auto manuals search

<http://auto.somanuals.com>

TV manuals search

<http://tv.somanuals.com>