

***Pioneer***

**DJ CONTROLLER**

**DDJ-T1**

**<http://www.prodjnet.com/support/>**

The Pioneer website shown above offers FAQs, information on software and various other types of information and services to allow you to use your product in greater comfort.

**Operating Instructions**

Thank you for buying this Pioneer product. Please read through these operating instructions so you will know how to operate your model properly. After you have finished reading the instructions, put them away in a safe place for future reference. In some countries or regions, the shape of the power plug and power outlet may sometimes differ from that shown in the explanatory drawings. However the method of connecting and operating the unit is the same.

**NOTE:**

This equipment has been tested and found to comply with the limits for a Class B digital device, pursuant to Part 15 of the FCC Rules. These limits are designed to provide reasonable protection against harmful interference in a residential installation. This equipment generates, uses, and can radiate radio frequency energy and, if not installed and used in accordance with the instructions, may cause harmful interference to radio communications. However, there is no guarantee that interference will not occur in a particular installation. If this equipment does cause harmful interference to radio or television reception, which can be determined by turning the equipment off and on, the user is encouraged to try to correct the interference by one or more of the following measures:

- Reorient or relocate the receiving antenna.
- Increase the separation between the equipment and receiver.
- Connect the equipment into an outlet on a circuit different from that to which the receiver is connected.
- Consult the dealer or an experienced radio/TV technician for help.

D8-10-1-2\_A1\_En

**CAUTION**

This product satisfies FCC regulations when shielded cables (with Ferrite-cores attached) and connectors are used to connect the unit to other equipment. To prevent electromagnetic interference with electric appliances such as radios and televisions, use shielded cables (with Ferrite-cores attached) and connectors for connections.

D8-10-3b\_A1\_En

**FEDERAL COMMUNICATIONS COMMISSION DECLARATION OF CONFORMITY**

This device complies with part 15 of the FCC Rules. Operation is subject to the following two conditions: (1) This device may not cause harmful interference, and (2) this device must accept any interference received, including interference that may cause undesired operation.

Product Name: DJ CONTROLLER

Model Number: DDJ-T1

Responsible Party Name: PIONEER ELECTRONICS (USA) INC.  
SERVICE SUPPORT DIVISION

Address: 1925 E. DOMINGUEZ ST. LONG BEACH, CA 90810-1003, U.S.A.

Phone: 1-800-421-1404

URL: <http://www.pioneerelectronics.com>

D8-10-4\*\_C1\_En

**WARNING:** Handling the cord on this product or cords associated with accessories sold with the product may expose you to chemicals listed on proposition 65 known to the State of California and other governmental entities to cause cancer and birth defect or other reproductive harm.

***Wash hands after handling.***

D36-P5\_B1\_En

This Class B digital apparatus complies with Canadian ICES-003.

D8-10-1-3\_A1\_En

**Information to User**

Alterations or modifications carried out without appropriate authorization may invalidate the user's right to operate the equipment.

D8-10-2\_A1\_En

**IMPORTANT NOTICE**

THE MODEL NUMBER AND SERIAL NUMBER OF THIS EQUIPMENT ARE ON THE REAR OR BOTTOM. RECORD THESE NUMBERS ON PAGE 31 FOR FUTURE REFERENCE.

D36-AP9-1\_A1\_En\_P5V

This product is for general household purposes. Any failure due to use for other than household purposes (such as long-term use for business purposes in a restaurant or use in a car or ship) and which requires repair will be charged for even during the warranty period.

K041\_A1\_En

For PLUGGABLE EQUIPMENT, the socket-outlet shall be installed near the equipment and shall be easily accessible.

D28-9-3-2\_A1\_En

---

---

# Contents

## How to read this manual

The names of displays, menus, and buttons in this manual are enclosed in brackets. (e.g. [MASTER] channel, [ON/OFF], [File] menu)

- The TRAKTOR manual and TRAKTOR GETTING STARTED can be viewed from the TRAKTOR help menu after TRAKTOR is installed.

## 01 Before start

Features .....	4
System setup example.....	4
What's in the box.....	4
About the AC adapter .....	5
Using the LAPTOP DOCK .....	6
Using with the feet removed .....	6

## 02 Before you start

About the TRAKTOR software.....	7
Installing the TRAKTOR software .....	7
Launching TRAKTOR.....	9
Performing product activation.....	9
Updating the TRAKTOR software .....	10
About the driver software (Windows).....	11

## 03 Connections

Names of terminals.....	13
Connecting the input/output terminals .....	14

## 04 Part names and functions

Control panel .....	15
1 Browser.....	16
2 Deck.....	17
3 Mixer.....	18
4 Effect.....	19

## 05 Operations

Importing tracks to TRAKTOR .....	20
Loading tracks in decks.....	20
Playback.....	20
Using the mixer functions.....	21
Using the effect function .....	21
Synchronizing the playing speed with other decks (beat sync).....	21
Inputting the sound of a microphone or external device .....	22

## 06 Changing the TRAKTOR Preferences

List of TRAKTOR Pioneer DDJ-T1 EDITION setting items .....	23
Assigning the desired functions to the [NEEDLE SEARCH] pad.....	23

## 07 Additional information

Troubleshooting .....	24
Using as a controller for other DJ software.....	25
List of MIDI Messages .....	26
Disclaimer.....	29
Cautions on copyrights.....	29
Specifications.....	29

# Before start

## Features

This product is an all-in-one DJ system for home DJ use, combining Pioneer DJ hardware - the world standard in club DJ equipment - with the "TRAKTOR Pioneer DDJ-T1 EDITION" DJ software by Native Instruments. You can enjoy full-fledged DJ play simply by connecting this product with a computer.

## LAYOUT

The control panel in this unit's effect section is arranged with the same layout as the TRAKTOR control screen, so it can be operated without hesitation during performances. The player and mixer section operation panels use the layout of Pioneer DJ hardware, for intuitive and accurate operation.

## 4 DECK CONTROL

This unit is equipped with a 4-channel mixer with [LOAD], [MASTER] and [SYNC] buttons provided on each of the decks, so previously complicated DJ performances using all four channels can be achieved with greater ease.

## TRAKTOR Pioneer DDJ-T1 EDITION

TRAKTOR Pioneer DDJ-T1 EDITION is a TRAKTOR software application designed exclusively for the DDJ-T1. All buttons and controls are preset so they are linked to the software, so DJ play is possible simply by connecting this unit to a computer (plug-and-play).

## LAPTOP DOCK

The computer's keyboard section can be stowed under this unit. Docking the computer with this unit into a single unit allows you to create an efficient DJ system.

## USB BUS POWER

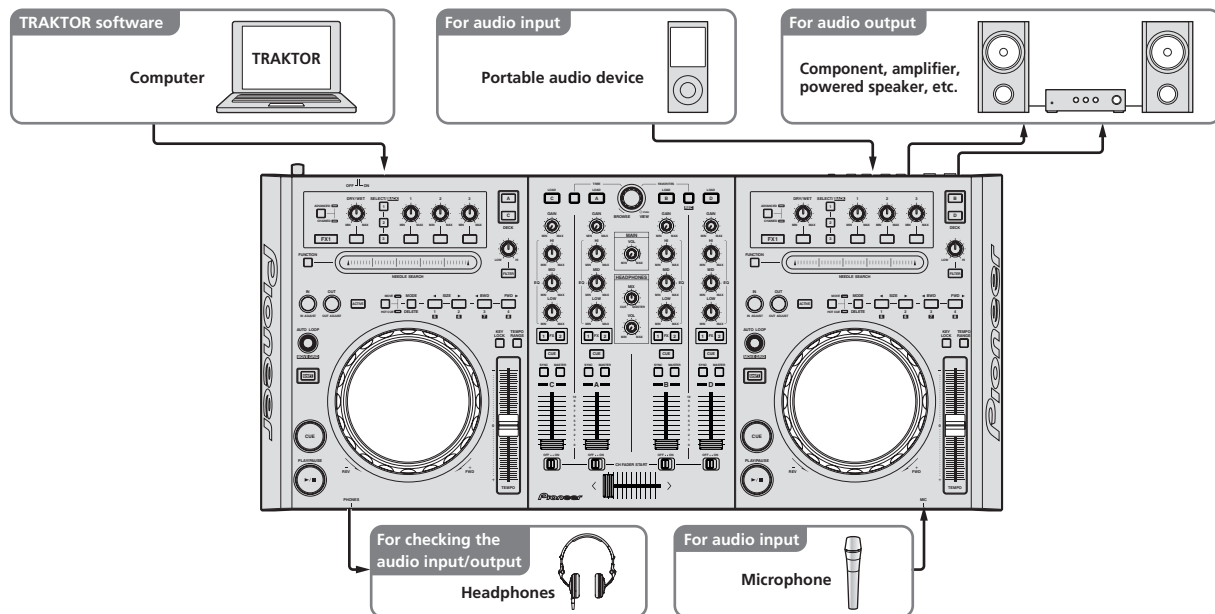
This product supports USB bus power. It can be used simply by connecting it to a computer with a USB cable.

## HIGH SOUND QUALITY

This product inherits the sound quality technology developed over the years for Pioneer DJ hardware to achieve the top level of sound quality in its class.

## System setup example

A DJ system like the one on the diagram below can be created by combining this unit with a computer and peripherals.



## What's in the box

- TRAKTOR Pioneer DDJ-T1 EDITION software CD-ROM
- Driver software CD-ROM
- AC adapter
- Power plug
- USB cable
- Operating instructions (this document)

## About the AC adapter

### Safety instructions

To ensure your personal safety and to maximize the full operating potential of your unit, read and follow these safety instructions.

#### Read & Retain Instructions

Read all operating and user information provided with this product.

#### Cleaning

Use a damp cloth to clean the exterior housing. Avoid using any fluids including liquid, aerosol or alcoholbased cleaning products.

#### Water or Moisture

Avoid operating or locating this product near water or other sources of fluid.

#### Accessories

Do not place this product on an unstable cart, stand, or table. The product may fall and be seriously damaged.

#### Ventilation

Do not block or cover this product in use. This unit should not be placed in a built-in installation unless properly ventilated.

#### Environment

Avoid placing this product in a location with exposure to large quantities of dust, high temperatures, high humidity, or subject to excessive vibrations or shocks.

#### Power Sources

Operate this product only from the recommended power sources. If you are unsure of the power source, consult an authorized Pioneer representative.

#### Power-Cord Protection

When unplugging the unit, pull on the plug – not on the cord. Do not handle the cord or plug with wet hands; doing so could cause an electric short or shock. Do not allow anything to pinch or rest on the power cord and do not place in a walkway.

#### Power

Turn OFF the system before installing this or any other hardware device.

#### Overloading

Avoid connecting too many devices to a single wall socket or power source as this can cause fires or short circuits.

#### Object & Liquid Entry

Never push inappropriate objects in to the device. Avoid spilling any liquids in to or on the outside of the drive.

#### Servicing

Opening or removing the cover exposes you to possible electrical shock or other danger. Contact a Pioneer authorized service representative for repairing this product (refer to the enclosed Service & Support Card).

#### Damage Requiring Service

Unplug the unit and refer servicing to qualified service personnel in the following situations:

- When the power cord, plug, or chassis is damaged.
- If liquid has been spilled, or objects have fallen into the product.
- If the product has been exposed to rain or water.
- If the product does not operate normally when the operating instructions are followed. Adjust only those controls that are covered by the operating instructions. Improper adjustment of other controls may result in damage and can require extensive work by a qualified technician to restore the unit to its normal operation.
- When the product exhibits a distinct change in performance – this indicates a need for service.

Check that there are no irregularities with the AC adapter or power plug, then insert the power plug into the specified position of the AC adapter

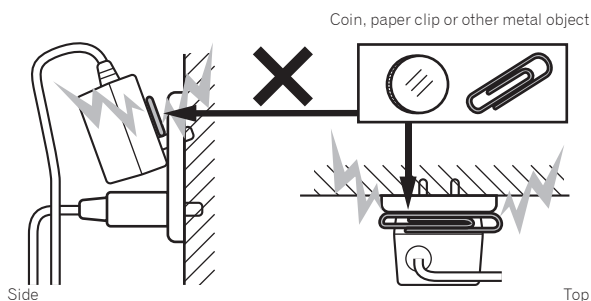
using the specified procedure until a click is heard. For details, see *Mounting the power plug* on page 5.

If there are irregularities with the AC adapter or power plug, ask your nearest Pioneer authorized service center or your dealer to carry out repair work.

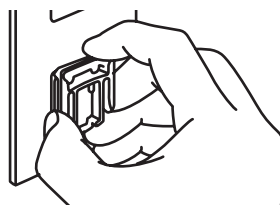
- Do not use this unit with a coin, paper clip or other metal object stuck between the AC adapter and power plug. Doing so could cause a short circuit, leading to fire or electric shock.



- When mounting the AC adapter on a wall outlet, make sure there is no space between the AC adapter and the wall outlet. Faulty contact or a coin, paper clip or other metal object getting stuck in the space could cause a short circuit, leading to fire or electric shock.



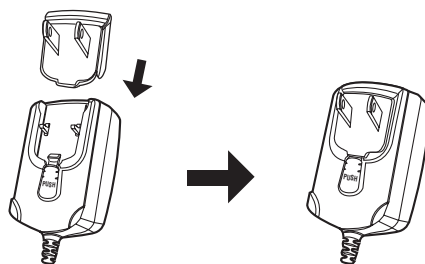
- The power plug could come detached from the AC adapter and remain in the power outlet if someone trips on the AC adapter's power cord or if something hits the AC adapter. If this happens, remove the power plug remaining in the outlet with dry hands, holding it as shown on the diagram below and without touching metal parts. Do not use any tools to remove it.



Do not touch metal parts.

### Mounting the power plug

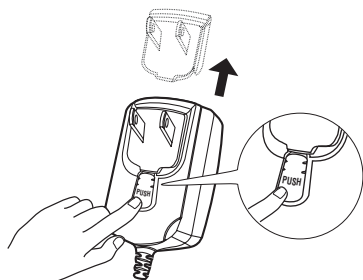
Slide the power plug along the guide rails in the AC adapter unit as shown on the diagram below, then press in until a click is heard.



## ❖ Removing the power plug

While pressing the [PUSH] button on the AC adapter unit, slide the power plug away from the adapter as shown on the diagram below to remove it.

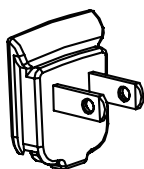
Once the power plug is mounted, there is no need to remove it.



---

## Power plug

The power plug shown below is included with this product.



---

## Using the LAPTOP DOCK

The computer's keyboard section can be stowed under this unit.



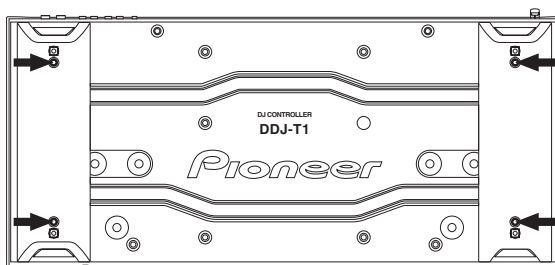
- Depending on the size of your (notebook) computer, the keyboard section may not fit in the LAPTOP DOCK.
- Install in such a way that the computer unit does not touch this unit.
- Install in such a way that the cables connected to the computer are not stuck under this unit.

---

## Using with the feet removed

This unit's two feet can be removed.

Use a Phillips screwdriver to remove the screws from the left and right feet (2 screws each).



- The screws you have removed will be needed when mounting the feet. Be careful not to lose them. The feet cannot be properly mounted using other screws.

# Before you start

## About the TRAKTOR software

TRAKTOR Pioneer DDJ-T1 EDITION is a special version of TRAKTOR designed exclusively for the DDJ-T1. For a comparison of the functions between TRAKTOR Pioneer DDJ-T1 EDITION and other versions of TRAKTOR, see the website below.

<http://www.prodjnet.com/support/>

- The DDJ-T1 supports TRAKTOR PRO and TRAKTOR SCRATCH PRO. If you own TRAKTOR PRO and TRAKTOR SCRATCH PRO, update to the latest version of the software before using it.

## Cautions on installing the TRAKTOR software

### Supported operating systems

Mac OS X	10.5	✓
	10.6	✓
Windows® 7 Home Premium/Professional/Ultimate	32-bit version	✓
	64-bit version	✓
Windows Vista® Home Basic/Home Premium/Business/Ultimate (SP1 or later)	32-bit version	✓
	64-bit version	✓
Windows® XP Home Edition/Professional (SP3 or later)	32-bit version	✓

For the latest information on the operating environment and compatibility, and to acquire the latest operating system, please visit the following Native Instruments website:

<http://www.native-instruments.com/traktor>

### Minimum operating environment for TRAKTOR

CPU	For Mac OS X	Macintosh computer equipped with an Intel® Core™ Duo processor of 1.66 GHz or greater
	For Windows® 7, Windows Vista® and Windows® XP	PC/AT compatible computer equipped with a Pentium® 4 or AMD Athlon 1.4 GHz (SSE1) or greater processor PC/AT compatible computer equipped with a 2 GHz or greater Intel® Pentium® 4 (or compatible) processor
Required memory	1 GB or more of RAM	
Hard disc	Free space of 100 MB or greater	
CD drive	Optical disc drive on which the CD-ROM can be read	
Internet connection	An Internet connection environment is required for user registration with Native Instruments, to update the TRAKTOR software, etc. Use the most recent version of the web browser.	
USB port	A USB port is required to connect the computer with this unit.	

- Full functionality is not guaranteed on all computers, even those meeting the operating environment requirements described above.
- Even with the required memory indicated for the operating environment above, lack of memory due to resident programs, the number of services, etc., could prevent the software from offering optimal functionality and performance. In such cases, free up sufficient memory. We recommend installing additional memory for stable operation.
- Depending on the computer's power-saving settings, etc., the CPU and hard disk may not provide sufficient processing capabilities. For notebook computers in particular, make sure the computer is in the proper conditions to provide constant high performance (for example by keeping the AC power connected) when using TRAKTOR.

## Installing the TRAKTOR software

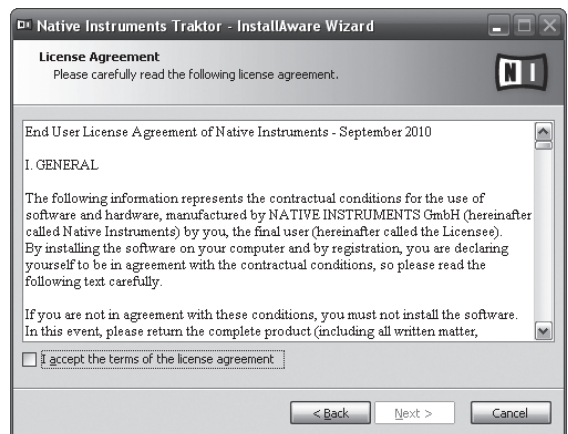
### About the installation procedure (Windows)

- 1 Insert the included TRAKTOR Pioneer DDJ-T1 EDITION software CD-ROM into the computer's CD drive.
- 2 From the Windows [Start] menu, double-click the [Computer (or My Computer)] > [Traktor] icon. The contents of the CD-ROM are displayed.
- 3 Double-click [Traktor Setup PC.exe]. The TRAKTOR installer is launched.
- 4 Once the TRAKTOR installer is launched, click [Next].
  - To return to the previous screen: Click [Back].
  - To cancel installation: Click [Cancel].



- 5 Read the contents of the [License Agreement] carefully, and if you agree, check [I accept the terms of the license agreement], then click [Next].

If you do not agree to the terms of the [License Agreement], click [Cancel] to cancel installation.



**6 Choose the type of TRAKTOR installation, then click [Next].**

Normally install all options, including [Controller Editor] and [Service Center].

**7 Choose where to install TRAKTOR, then click [Next].**

To choose the normal place of installation, simply click [Next].  
To install in a different location, click [Change...], choose the place of installation, then click [Next].

**8 Select the Native Instruments hardware driver, then click [Next].**

Check the check box for your hardware.

**9 To install the Traktor Control X1 driver, check the check box, then click [Next].**

**10 When the following screen appears, click [Next].**

Installation begins.  
The installation completed screen appears once installation is completed.



**11 Click [Finish].**

This completes the installation procedure.

---

## About the installation procedure (Macintosh)

**1 Insert the included TRAKTOR Pioneer DDJ-T1 EDITION software CD-ROM into the computer's CD drive.**

The [Traktor] icon appears on the screen.

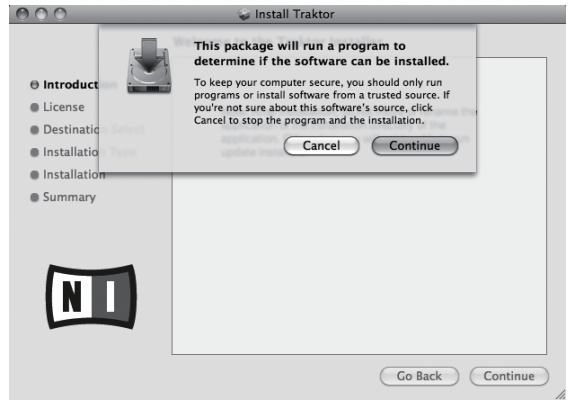
**2 Double-click the [Traktor] icon.**

The contents of the CD-ROM are displayed.

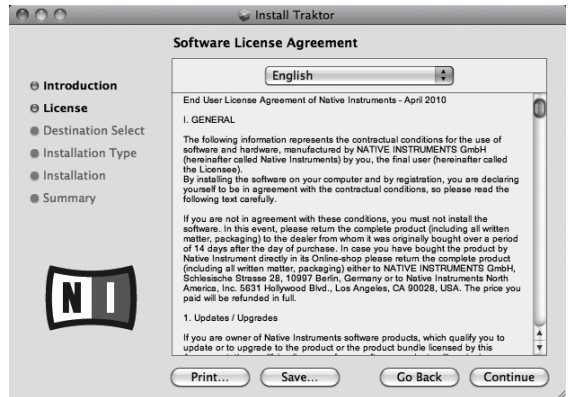
**3 Double-click [Traktor Installer Mac.mpkg].**

The TRAKTOR installer is launched.

**4 Once the TRAKTOR installer is launched, click [Continue].**

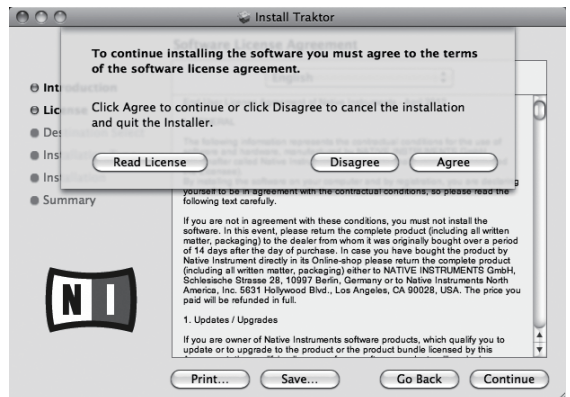


**5 Read the contents of the license agreement carefully, then click [Continue].**



**6 If you agree to the contents of the usage agreement, click [Agree].**

If you do not agree to the contents of the usage agreement, click [Disagree] to cancel installation.



**7 Select the Native Instruments hardware driver, then click [Continue].**

Check the check box for your hardware.

**8 Choose where to install TRAKTOR, then click [Install].**

To choose the normal place of installation, simply click [Install].  
To install in a different location, click [Change Install Location...], choose the place of installation, then click [Install].  
Installation begins.  
The installation completed screen appears once installation is completed.



## 9 Click [Restart].

This completes the installation procedure.

# Launching TRAKTOR

## For Windows

From the Windows [Start] menu, open [All Programs] > [Native Instruments] > [Traktor], then click the [Traktor] icon.

## For Mac OS X

In Finder, open the [Application] folder, next open [Native Instruments] > [Traktor], then double-click the [Traktor] icon.

# Performing product activation

To use TRAKTOR Pioneer DDJ-T1 EDITION, first perform product activation (referred to simply as "activation" below) using Native Instruments SERVICE CENTER (referred to simply as "SERVICE CENTER" below).

## Launching the SERVICE CENTER

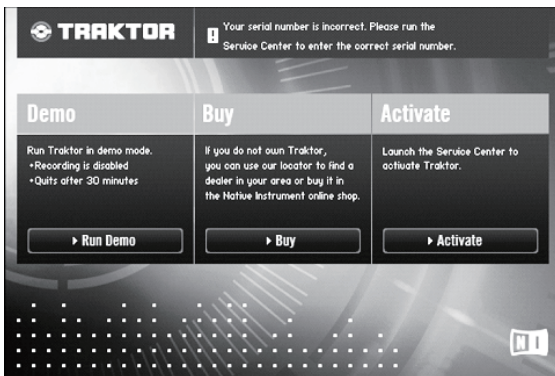
There are three ways to do this:

- Launching from the dialog displayed when TRAKTOR is started up
- Launching from the TRAKTOR [Help] menu
- Launching SERVICE CENTER directly

### ❖ To launch from the dialog displayed when TRAKTOR is started up

#### 1 Launching TRAKTOR

The screen below appears.



- This dialog is displayed each time TRAKTOR is launched until the license is acquired from **Service Center**.

#### 2 Select the method for acquiring the license, then click.

- [Activate]: Acquire the license immediately from the **SERVICE CENTER**.
- [Buy]: Purchase TRAKTOR from the Native Instruments online shop.
- [Run Demo]: Launch TRAKTOR in the demo mode.

### ❖ To launch from the TRAKTOR [Help] menu

From the TRAKTOR [Help] menu, click [Launch Service Center].

### ❖ To launch the SERVICE CENTER directly

#### For Windows

From the Windows [Start] menu, click the [Native Instruments] > [Service Center] > [Service Center] icons.

#### For Mac OS X

In Finder, open the [Application] folder, then double-click the [Service Center] > [Service Center] icons.

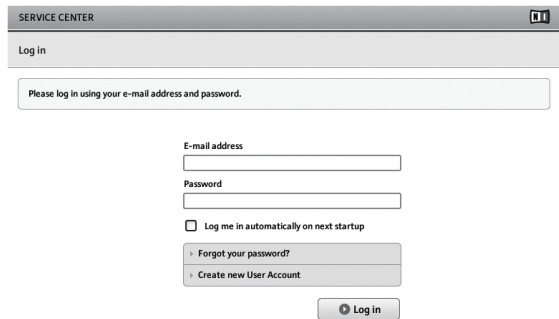
## Activation procedure

- Online activation: When your computer is connected to the Internet
- Offline activation: When your computer is not connected to the Internet

### ❖ Online activation

#### 1 Launch the SERVICE CENTER.

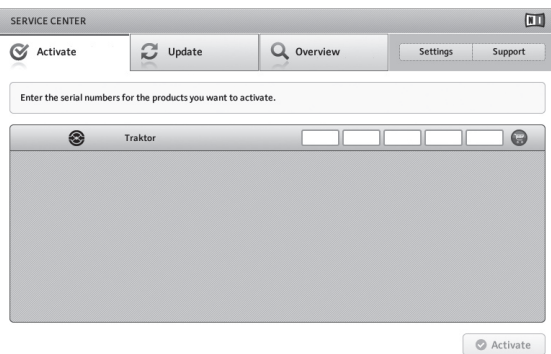
The log-in screen is displayed.



#### 2 Input your e-mail address and password, then click [Log in].

- When logging in for the first time, you must create a new user account. When [Create new User Account] is clicked, the new user account registration screen appears. Input the required items (e-mail address, first and last names), select your country/region, then click [Next]. When the registration information confirmation screen appears, check the contents, then click [OK]. A password is sent to the e-mail address input on the form. Return to the log-in screen and log in.
- The personal information input when registering a new user account may be collected, processed and used based on the privacy policy on the Native Instruments website. Pioneer Corporation does not collect, process or use this personal information.

**3** Input the serial number indicated on the package of the TRAKTOR Pioneer DDJ-T1 EDITION software CD-ROM, then click [Activate].



**4** Once the product license registration successful screen appears, click [Exit].

### ❖ Offline activation

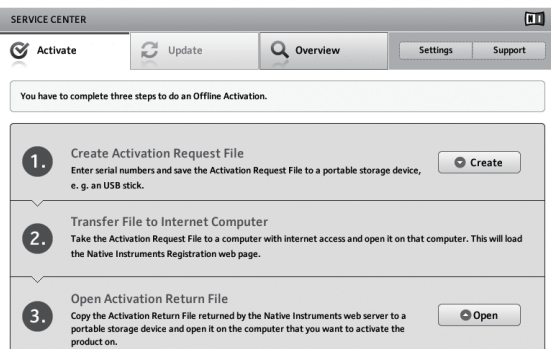
To activate TRAKTOR Pioneer DDJ-T1 EDITION installed on a computer that is not connected to the Internet, use **SERVICE CENTER** in the offline mode.

With this procedure, a second computer that can be connected to the Internet is required.

**1** Launch the **SERVICE CENTER** on the computer on which TRAKTOR Pioneer DDJ-T1 EDITION is to be installed.

**2** Click [Offline] at [Continue without connecting to the internet].

**3** Click [Create] at [Create Activation Request File].



**4** Input the serial number indicated on the package of the TRAKTOR Pioneer DDJ-T1 EDITION software CD-ROM, then click [Create].

A launch request file is created. Save this file on a USB device, etc.

**5** Connect the USB device on which the launch request file is saved to the computer that can be connected to the Internet.

**6** Double-click the launch request file on the computer that can be connected to the Internet.

The web browser is launched.

**7** Once the product activation screen appears, click [Send].

**8** Input your e-mail address and password, then click [SUBMIT].

- When logging in for the first time, you must create a new user account. When [No - I do not have an NI account.] is checked and [SUBMIT] is clicked, the new user account registration screen appears. Input the required items (e-mail address, first and last names, street address, city and postal code), select your country/region, then click [NEXT]. When a survey screen appears, select answers to the various questions, then click [SUBMIT]. A password is sent to the e-mail address input on the form. Return to the log-in screen and log in.
- The personal information input when registering a new user account may be collected, processed and used based on the privacy policy on the Native Instruments website. Pioneer Corporation does not collect, process or use this personal information.

**9** When the [Service Center Activation Page] appears, click [NEXT].

**10** Check that [Product] is [TRAKTOR Pioneer DDJ-T1 EDITION] and [Status] is [OK], then click [NEXT].

A launch return file is created. Save this file on a USB device, etc.

**11** Launch the **SERVICE CENTER** on the computer on which TRAKTOR Pioneer DDJ-T1 EDITION is to be installed.

**12** Click [Offline] at [Continue without connecting to the internet].

**13** Click [Open] at [Open Activation Return File].

The launch return file is loaded.

**14** Check in the **SERVICE CENTER** that product activation has completed.

## Updating the TRAKTOR software

When the computer is connected to the Internet, TRAKTOR software can be updated by accessing the Native Instruments **SERVICE CENTER** (referred to simply as "**SERVICE CENTER**" below).

**1** Launch the **SERVICE CENTER** and log in.

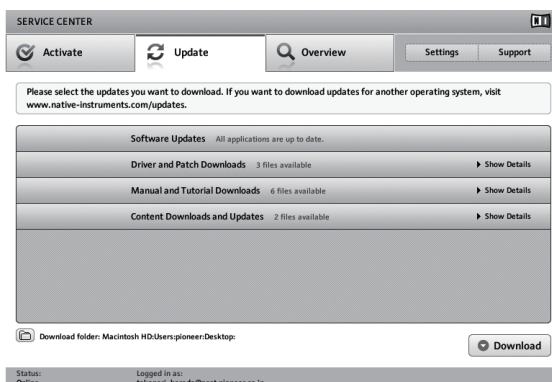
For instructions on launching the **SERVICE CENTER** and logging in, see *Launching the SERVICE CENTER* on page 9.

**2** Click the [Update] tab.

Available updates are checked.

**3** Check the check box.

Specify the update to be downloaded.



**4** Click [Download].

Updating begins.

---

## About the driver software (Windows)

This driver software is an exclusive ASIO driver for outputting audio signals from the computer. To use this unit connected to a computer on which Windows is installed, install the driver software on the computer beforehand.

- There is no need to install the driver software when using Mac OS X.

---

## Software end user license agreement

This Software End User License Agreement ("Agreement") is between you (both the individual installing the Program and any single legal entity for which the individual is acting) ("You" or "Your") and PIONEER CORPORATION ("Pioneer").

TAKING ANY STEP TO SET UP OR INSTALL THE PROGRAM MEANS THAT YOU ACCEPT ALL OF THE TERMS OF THIS LICENSE AGREEMENT. PERMISSION TO DOWNLOAD AND/OR USE THE PROGRAM IS EXPRESSLY CONDITIONED ON YOUR FOLLOWING THESE TERMS. WRITTEN OR ELECTRONIC APPROVAL IS NOT REQUIRED TO MAKE THIS AGREEMENT VALID AND ENFORCEABLE. IF YOU DO NOT AGREE TO ALL OF THE TERMS OF THIS AGREEMENT, YOU ARE NOT AUTHORIZED TO USE THE PROGRAM AND MUST STOP INSTALLING IT OR UNINSTALL IT, AS APPLICABLE.

### 1 Definitions

- 1 "Documentation" means written documentation, specifications and help content made generally available by Pioneer to aid in installing and using the Program.
- 2 "Program" means all or any part of Pioneer's software licensed to You by Pioneer under this Agreement.

### 2 Program license

- 1 Limited License. Subject to this Agreement's restrictions, Pioneer grants to You a limited, non-exclusive, nontransferable, license (without the right to sublicense):
  - a To install a single copy of the Program on the hard disk drive of Your computer, to use the Program only for Your personal purpose complying with this Agreement and the Documentation ("Authorized Use");
  - b To use the Documentation in support of Your Authorized Use; and
  - c To make one copy of the Program solely for backup purposes, provided that all titles and trademark, copyright and restricted rights notices are reproduced on the copy.
- 2 Restrictions. You will not copy or use the Program or Documentation except as expressly permitted by this Agreement. You will not transfer, sublicense, rent, lease or lend the Program, or use it for third-party training, commercial time-sharing or service bureau use. You will not Yourself or through any third party modify, reverse engineer, disassemble or decompile the Program, except to the extent expressly permitted by applicable law, and then only after You have notified Pioneer in writing of Your intended activities. You will not use the Program on multiple processors without Pioneer's prior written consent.
- 3 Ownership. Pioneer or its licensor retains all right, title and interest in and to all patent, copyright, trademark, trade secret and other intellectual property rights in the Program and Documentation, and any derivative works thereof. You do not acquire any other rights, express or implied, beyond the limited license set forth in this Agreement.
- 4 No Support. Pioneer has no obligation to provide support, maintenance, upgrades, modifications or new releases for the Program or Documentation under this Agreement.

### 3 Warranty disclaimer

THE PROGRAM AND DOCUMENTATION ARE PROVIDED "AS IS" WITHOUT ANY REPRESENTATIONS OR WARRANTIES, AND YOU AGREE TO USE THEM AT YOUR SOLE RISK. TO THE FULLEST EXTENT PERMISSIBLE BY LAW, PIONEER EXPRESSLY DISCLAIMS ALL WARRANTIES OF ANY KIND WITH RESPECT TO THE PROGRAM AND DOCUMENTATION, WHETHER EXPRESS, IMPLIED, STATUTORY, OR ARISING OUT OF COURSE OF PERFORMANCE, COURSE OF

DEALING OR USAGE OF TRADE, INCLUDING ANY WARRANTIES OF MERCHANTABILITY, FITNESS FOR A PARTICULAR PURPOSE, SATISFACTORY QUALITY, ACCURACY, TITLE OR NON-INFRINGEMENT.

### 4 Damages and remedies for breach

You agree that any breach of this Agreement's restrictions would cause Pioneer irreparable harm for which money damages alone would be inadequate. In addition to damages and any other remedies to which Pioneer may be entitled, You agree that Pioneer may seek injunctive relief to prevent the actual, threatened or continued breach of this Agreement.

### 5 Termination

Pioneer may terminate this Agreement at any time upon Your breach of any provision. If this Agreement is terminated, You will stop using the Program, permanently delete it from the computer where it resides, and destroy all copies of the Program and Documentation in Your possession, confirming to Pioneer in writing that You have done so. Sections 2.2, 2.3, 2.4, 3, 4, 5 and 6 will continue in effect after this Agreement's termination.

### 6 General terms

- 1 Limitation of Liability. In no event will Pioneer or its subsidiaries be liable in connection with this Agreement or its subject matter, under any theory of liability, for any indirect, incidental, special, consequential or punitive damages, or damages for lost profits, revenue, business, savings, data, use, or cost of substitute procurement, even if advised of the possibility of such damages or if such damages are foreseeable. In no event will Pioneer's liability for all damages exceed the amounts actually paid by You to Pioneer or its subsidiaries for the Program. The parties acknowledge that the liability limits and risk allocation in this Agreement are reflected in the Program price and are essential elements of the bargain between the parties, without which Pioneer would not have provided the Program or entered into this Agreement.
- 2 The limitations or exclusions of warranties and liability contained in this Agreement do not affect or prejudice Your statutory rights as consumer and shall apply to You only to the extent such limitations or exclusions are permitted under the laws of the jurisdiction where You are located.
- 3 Severability and Waiver. If any provision of this Agreement is held to be illegal, invalid or otherwise unenforceable, that provision will be enforced to the extent possible or, if incapable of enforcement, deemed to be severed and deleted from this Agreement, and the remainder will continue in full force and effect. The waiver by either party of any default or breach of this Agreement will not waive any other or subsequent default or breach.
- 4 No Assignment. You may not assign, sell, transfer, delegate or otherwise dispose of this Agreement or any rights or obligations under it, whether voluntarily or involuntarily, by operation of law or otherwise, without Pioneer's prior written consent. Any purported assignment, transfer or delegation by You will be null and void. Subject to the foregoing, this Agreement will be binding upon and will inure to the benefit of the parties and their respective successors and assigns.
- 5 Entire Agreement. This Agreement constitutes the entire agreement between the parties and supersedes all prior or contemporaneous agreements or representations, whether written or oral, concerning its subject matter. This Agreement may not be modified or amended without Pioneer's prior and express written consent, and no other act, document, usage or custom will be deemed to amend or modify this Agreement.
- 6 You agree that this Agreement shall be governed and construed by and under the laws of Japan.

---

## Installing the driver software

### ❖ Before installing the driver software

- Read *Software end user license agreement* carefully.
- Turn off this unit's power switch, then disconnect the USB cable connecting this unit and the computer.
- If any other programs are running on the computer, quit them.

- To install or uninstall the driver software, you need to be authorized by the administrator of your computer. Log on as the administrator of your computer before proceeding with the installation.
- If you connect this unit to your computer without installing the driver software first, an error may occur on your computer depending on the system environment.
- If installation of the driver software is interrupted after it has started, start the installation procedure over again from the beginning.

#### Supported operating systems

Windows® 7 Home Premium/Professional/Ultimate	32-bit version	✓
	64-bit version	✓ <sup>[1]</sup>
Windows Vista® Home Basic/Home Premium/Business/Ultimate	32-bit version	✓
	64-bit version	✓ <sup>[1]</sup>
Windows® XP Home Edition/Professional (SP2 or later)	32-bit version	✓

[1] When using a 64-bit version of Windows, the driver software can only be used for 32-bit applications.

**1 Insert the included driver software CD-ROM into the computer's CD drive.**

**2 Once the CD-ROM's menu is displayed, double-click [Pioneer\_DDJ\_Driver\_XXXXX.exe].**

**3 Proceed with installation according to the instructions on the screen.**

If [Windows Security] appears on the screen while the installation is in progress, click [Install this driver software anyway] and continue with the installation.

- When installing on Windows XP  
If [Hardware Installation] appears on the screen while the installation is in progress, click [Continue Anyway] and continue with the installation.
- When the installation program is completed, a completion message appears.

## Connecting this unit and computer

**1 Connect this unit to your computer via a USB cable.**

For details about connections, see *Connections* on page 13.

**2 Slide the [ON/OFF] switch to the [ON] side.**

Turn on the power of this unit.

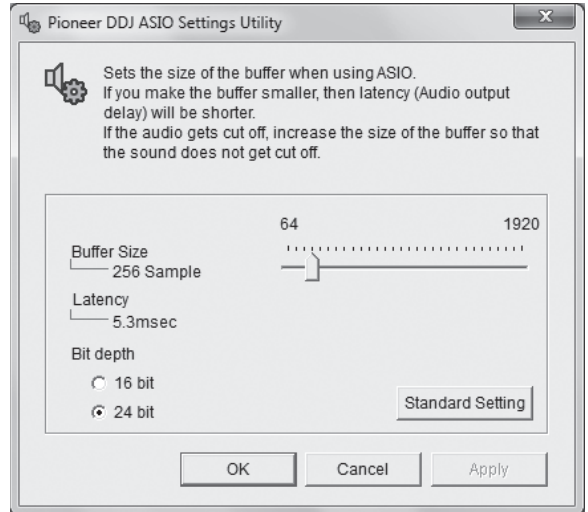
- The message [Installing device driver software] may appear when this unit is first connected to the computer or when it is connected to a different USB port on the computer. Wait awhile until the message [Your devices are ready for use] appears.

## Adjusting the buffer size

This unit functions as an audio device conforming to the ASIO standards.

- If an application using this unit as the default audio device (DJ software, etc.) is running, quit that application before adjusting the buffer size.

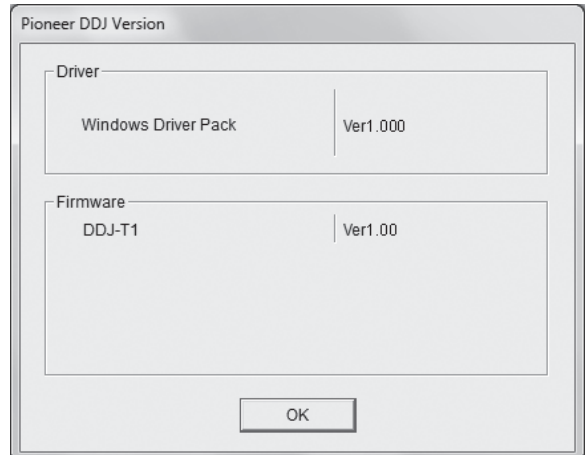
**Click the Windows [Start] menu>[All Programs]>[Pioneer]>[DDJ]>[DDJ ASIO Settings Utility].**



- If the buffer size is made large, drops in audio data (breaks in the sound) occur less easily, but the time lag due to the delay in the transfer of the audio data (latency) increases.

## Checking the version of the driver software

**Click the Windows [Start] menu>[All Programs]>[Pioneer]>[DDJ]>[DDJ Version Display Utility].**



- You can check the firmware version of this unit on the screen.
- The firmware version is not displayed when this unit is not connected to the computer or when this unit and computer are not properly communicating.

## Checking the latest information on the driver software

For the latest information on the driver software for exclusive use with this unit, visit our website shown below.

<http://www.prodjnet.com/support/>

# Connections

Be sure to turn off the power and unplug the AC adapter from the power outlet before making or changing connections between devices.

Wait until all connections between devices have been completed before connecting the AC adapter.

Only use the AC adapter included with this unit.

Refer to the operating instructions for the component to be connected.

Power to this unit is supplied by the AC adapter or by USB bus power.

This unit can be used by connecting it to a computer using a USB cable, even without connecting the AC adapter.

- Connect this unit and the computer directly using the included USB cable.
- A USB hub cannot be used.
- When using USB bus power, use the connected computer on an AC power supply.
- In cases like the ones below, the power may be insufficient and this unit may not operate on USB bus power.
  - When the computer's USB power supply capacity is insufficient.
  - When other USB devices are connected to the computer.

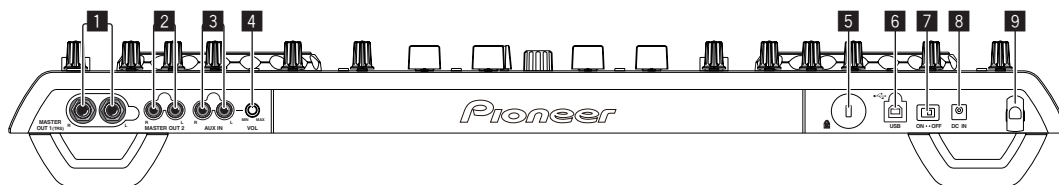
If this unit does not operate on USB bus power, connect the included AC adapter.

- The following limitations apply when operating on USB bus power:
  - The jog dial indicator will not light.
  - The indicators (aside from the jog dial) will be dimmer.
  - The [AUX IN] and [MIC] terminals cannot be used.
  - The volume of the headphones will be lower.

To use the unit without these limitations, connect the included AC adapter.

## Names of terminals

### Rear panel



#### 1 MASTER OUT 1 terminal

Connect powered speakers, etc., here.

This is a TRS phone jack, so both balanced and unbalanced outputs are supported.

- The sound will be distorted if the level is raised too high when using unbalanced outputs.

#### 2 MASTER OUT 2 terminal

Connect to a power amplifier, etc.

#### 3 AUX IN terminal

Connect to the output terminal of an external device (sampler, portable audio device, etc.)

- This cannot be used when operating on USB bus power.

#### 4 VOL control

Adjusts the audio level input to the [AUX IN] terminals.

#### 5 Kensington security slot

#### 6 USB terminal

Connect to a computer.

- Connect this unit and the computer directly using the included USB cable.
- A USB hub cannot be used.

#### 7 ON/OFF switch

Turns this unit's power on and off.

#### 8 DC IN terminal

Connect to a power outlet using the included AC adapter (with the power plug mounted).

Wait until connection of all equipment is completed before connecting the AC adapter.

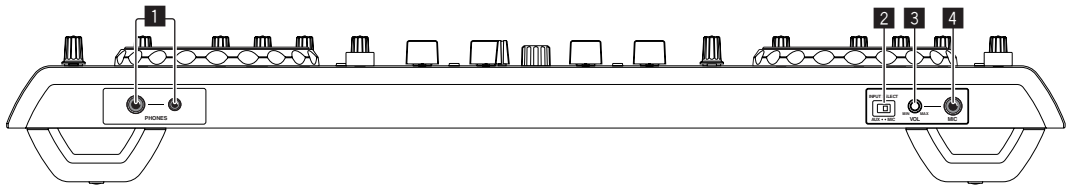
Only use the included AC adapter.

#### 9 Cord hook

Catch the AC adapter's power cord and USB cable on this hook when using this unit. For details, see *Cord hook* on page 14.

- The sound will be interrupted if the AC adapter or USB cable is disconnected during playback.

## Front panel



### 1 PHONES terminal

Connect headphones here.

Both stereo phone plugs (Ø 6.3 mm) and stereo mini phone plugs (Ø 3.5 mm) can be used.

- The volume decreases when headphones are connected simultaneously to both the stereo phone jack and the stereo mini phone jack.

### 2 AUX/MIC selector switch

Switches the audio input between the external device and the microphone.

- [AUX]: The external device connected to the [AUX] terminals is selected.
- [MIC]: The microphone connected to the [MIC] terminal is selected.

### 3 VOL control

Adjusts the audio level input to the [MIC] terminal.

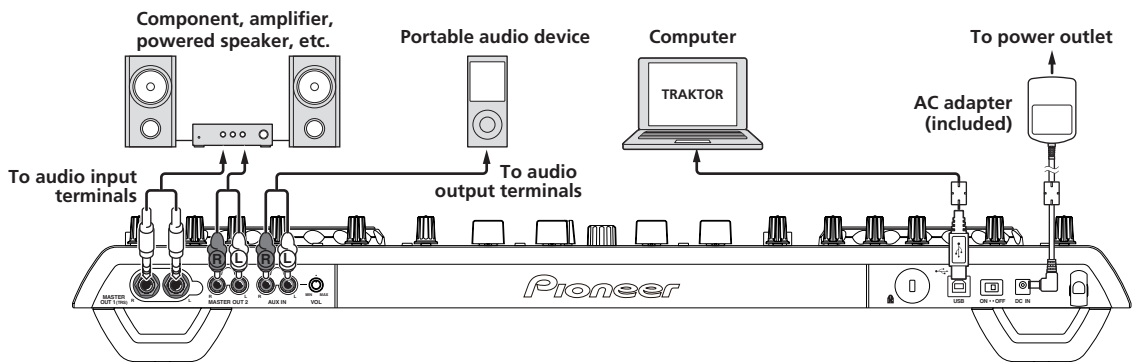
### 4 MIC jack

Connect a microphone here.

- This cannot be used when operating on USB bus power.

## Connecting the input/output terminals

### Rear panel



### ❖ Cord hook

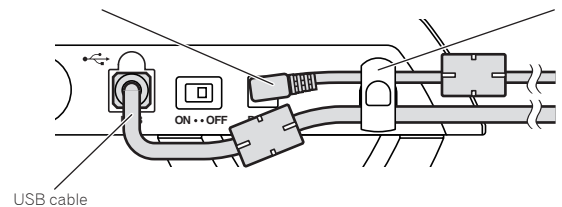
Hook the AC adapter's power cord in the top of the cord hook, the USB cable in the bottom.

Fasten the AC adapter's power cord and USB cable in place by hooking them on the cord hook. This prevents the power cord and USB cable from being accidentally pulled and the plugs from being disconnected from the terminals.

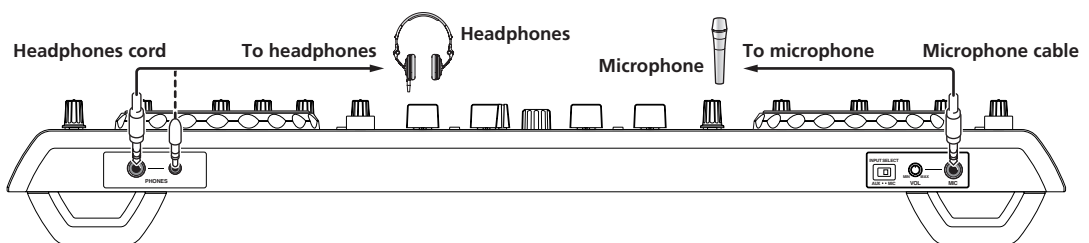
- The sound will be interrupted if the AC adapter or USB cable is disconnected during playback.

AC adapter's power cord

Cord hook

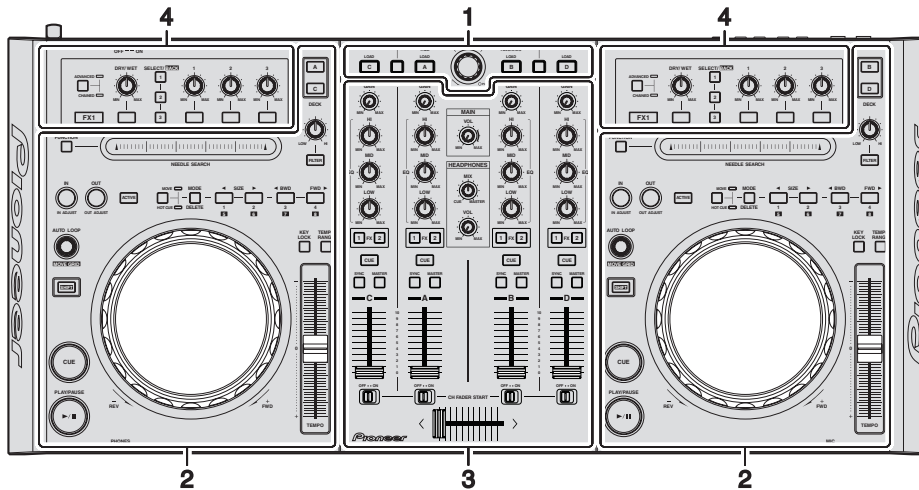
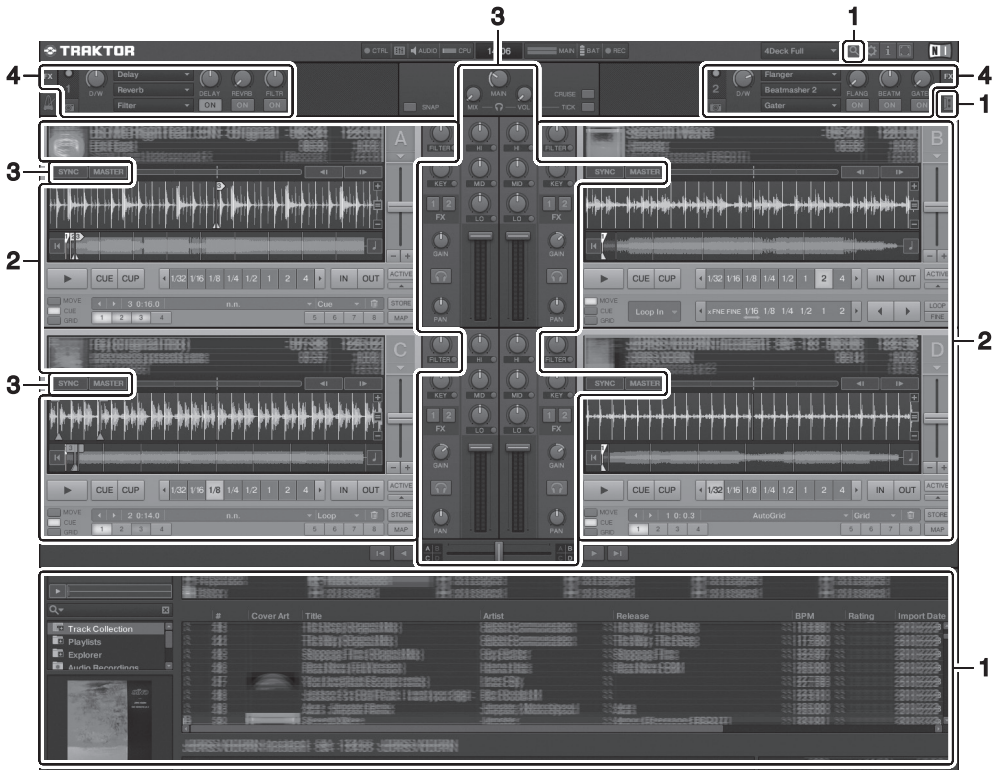


### Front panel



# Part names and functions

## Control panel



**1** Browser (page 16)

**2** Deck (page 17)

The above screen shows just one example of the display.

The contents displayed differ according to the resolution of your computer's monitor.

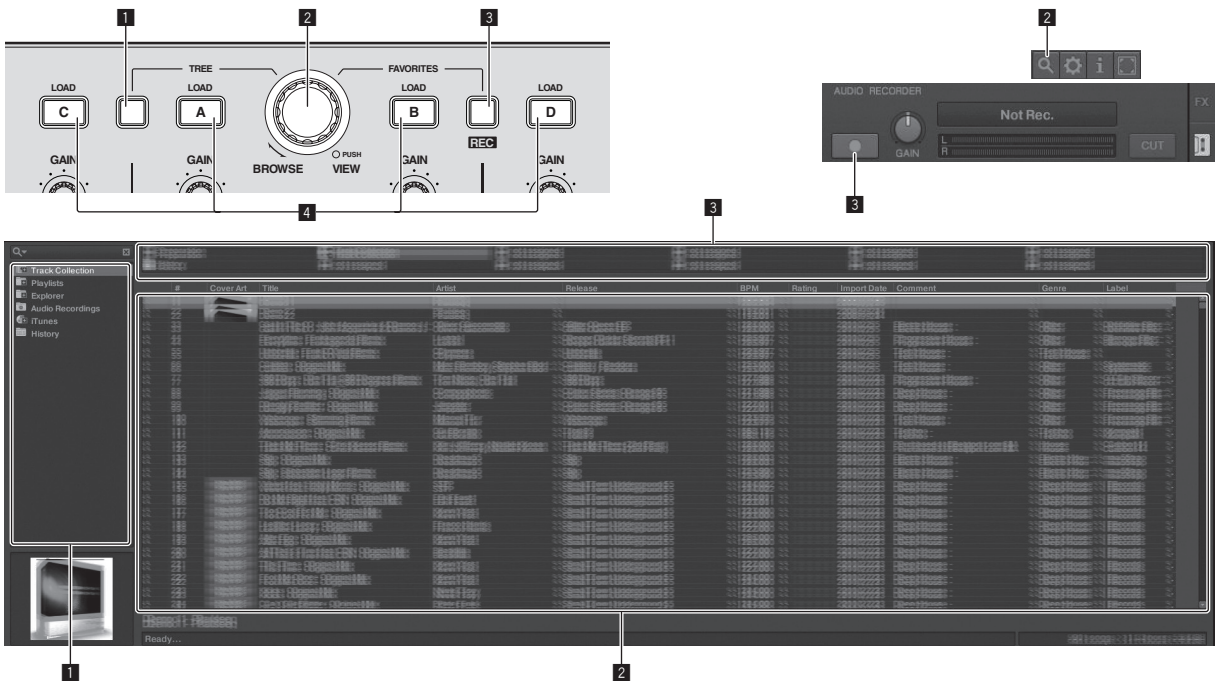
The contents displayed on the screen can be changed using the procedure below.

- Click : Switches the full screen display on and off.
- Double-click the deck's track information display section (the part where the track name, BPM, etc., are displayed): Opens and closes the track information display section.
- Click under the **[ACTIVE]** button: Opens and closes the advanced panel.

**3** Mixer (page 18)

**4** Effect (page 19)

# 1 Browser



## 1 TREE button

- Turn the rotary selector while pressing the **[TREE]** button: Moves the cursor in the **[TREE]** area. The section marked **1** on the above screen is called the **[TREE]** area.
- Press the rotary selector while pressing the **[TREE]** button: Opens/closes the folder.

## 2 Rotary selector

- Turn the rotary selector: Moves the cursor in the **[TRACK]** area. The section marked **2** on the above screen is called the **[TRACK]** area.
- Press the rotary selector: Turns the enlarged display of the **[BROWSE]** area on/off. The **[TREE]** area, **[TRACK]** area and **[FAVORITES]** area are collectively called the **[BROWSE]** area.

Turn the rotary selector while pressing the **[SHIFT]** button: Moves the cursor in the **[TRACK]** area page by page.

## 3 FAVORITES (REC) button

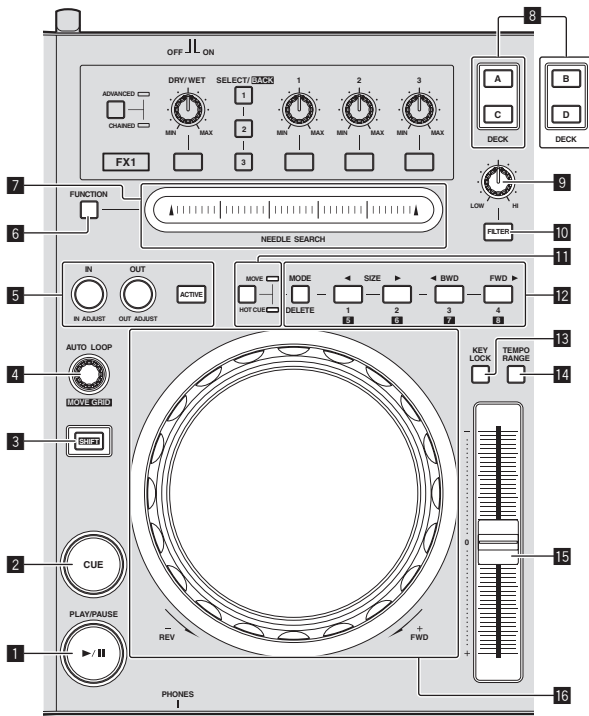
- Turn the rotary selector while pressing the **[FAVORITES (REC)]** button: Moves the cursor in the **[FAVORITES]** area. The section marked **3** on the above screen is called the **[FAVORITES]** area.
- Press the **[FAVORITES (REC)]** button while pressing the **[SHIFT]** button: Starts/stops recording.
  - To display the **[AUDIO RECORDER]** panel, click the **[M]** icon in the upper right of the screen.
  - Recording can be started/stopped even when the **[AUDIO RECORDER]** panel is not displayed.
  - To play files you have recorded, select **[Audio Recordings]** in the **[TREE]** area. The location where recorded files are stored can be checked and changed at **[Recording]** under **[Preferences]**.

## 4 LOAD button

Loads the track selected with the cursor in each of the decks.



## 2 Deck



### 1 PLAY/PAUSE ►/II button

Use this to play/pause tracks.

### 2 CUE button

When the [CUE] button is pressed while pausing, the cue point is set at the position where playback is pausing.

- When TRAKTOR's [SNAP] function is on: The cue and loop points can be set at the desired position.
- When TRAKTOR's [SNAP] function is on: The cue and loop points are set to the nearest [Beat Grid].

When the [CUE] button is pressed during playback, playback returns to the set cue point, cues there, and the pause mode is set (back cue).

When you keep pressing the [CUE] button after returning to the cue point, playback continues as long as the button is pressed.

### 3 SHIFT button

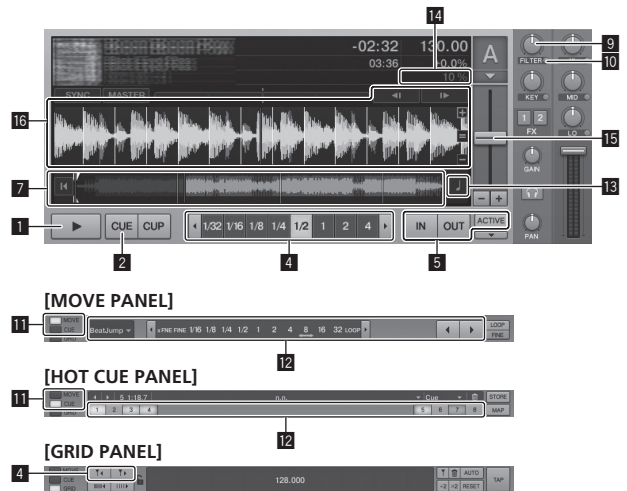
When another button is pressed while pressing the [SHIFT] button, a different function is called out.

### 4 AUTO LOOP (MOVE GRID) control

- Turn the [AUTO LOOP (MOVE GRID)] control: Changes the loop size.
- Press the [AUTO LOOP (MOVE GRID)] control: Switches loop playback on/off.
- Turn the [AUTO LOOP (MOVE GRID)] control while pressing the [SHIFT] button: The [Beat Grid] can be adjusted. This adjusts the difference with the results of analysis.
  - When adjusting the [Beat Grid], create at least one [BEAT MARKER].
  - When creating [BEAT MARKER], set the hot cue [CUE TYPE] to [Grid].
  - [CUE TYPE] (the type of hot cue) can be changed by clicking [▼] to the left of the [ ] icon.

### 5 IN (IN ADJUST) button, OUT (OUT ADJUST) button, ACTIVE button

- **IN (IN ADJUST) button**  
During playback, press the [IN (IN ADJUST)] button at the position at which you want to start loop playback (the loop in point) to set the loop in point.



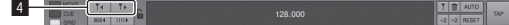
#### [MOVE PANEL]



#### [HOT CUE PANEL]



#### [GRID PANEL]



The loop in point can be fine-adjusted by pressing the [IN (IN ADJUST)] button during loop playback then using the jog dial.

- During fine-adjustment of the loop point, the [IN (IN ADJUST)] button flashes rapidly and the [OUT (OUT ADJUST)] button is off.
- To return to normal loop playback, press the [IN (IN ADJUST)] button.

Real-time cue: When the [IN (IN ADJUST)] button is pressed during playback, the cue point is set at the position at which the button was pressed.

#### • OUT (OUT ADJUST) button

Press the [OUT (OUT ADJUST)] button at the position at which you want to stop loop playback (the loop out point) to set the loop out point.

The loop out point is set, playback returns to the loop in point and loop playback starts.

The loop out point can be fine-adjusted by pressing the [OUT (OUT ADJUST)] button during loop playback then using the jog dial.

After switching [MOVE MODE] to [Loop Out], use the jog dial to fine-adjust the loop out point.

- During fine-adjustment of the loop out point, the [OUT (OUT ADJUST)] button flashes rapidly and the [IN (IN ADJUST)] button is off.
- To return to normal loop playback, press the [OUT (OUT ADJUST)] button.

#### • ACTIVE button

Switches loop playback on/off.

### 6 FUNCTION button

Switches the [NEEDLE SEARCH] pad's function.

### 7 NEEDLE SEARCH pad

- When the [FUNCTION] button is off:  
The [NEEDLE SEARCH] function can be used.
  - The sound at the position at which the [NEEDLE SEARCH] pad is touched can easily be played.
- When the [FUNCTION] is on:  
The desired function can be assigned.
  - Upon purchase, nothing is assigned.

For instructions on assigning functions, see *Changing the TRAKTOR Preferences* on page 23.

### 8 DECK button

Switches the deck to be operated.

- Deck on left side of this unit: Deck [A] or [C]
- Deck on right side of this unit: Deck [B] or [D]

### 9 Filter control

- Turn counterclockwise while filter function is on: Low pass filter.
- Turn clockwise while filter function is on: High pass filter.

### 10 FILTER button

Switches the filter function on/off.

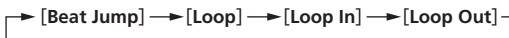
### 11 MOVE/HOT CUE selector button

Switches [Move Panel] and [Cue Panel] in the advanced panel.

- To open the advanced panel, click [▼] below [ACTIVE] in TRAKTOR.

### 12 MOVE PANEL/HOT CUE PANEL

- **MOVE PANEL** operation  
[MOVE MODE] (the loop moving mode) switches each time the [MODE DELETE] button is pressed.



- [Beat Jump]: The position of playback moves.
- [Loop]: The loop moves.
- [Loop In]: The loop in point moves.
- [Loop Out]: The loop out point moves.

Use the [SIZE ◀▶] buttons to set the amount of movement of the playback position or loop by fractions of the beat.

Use the [◀ BWD/FWD ▶] buttons to move the playback position or loop by the amount of movement set with the [SIZE ◀▶] buttons.

- **HOT CUE PANEL** operation

When a button at which nothing is set is pressed in the play or pause mode, a hot cue ([1] – [4]) is set at the position at which the button was pressed.

When a button at which a hot cue ([1] – [4]) is set is pressed in the play or pause mode, a hot cue ([1] – [4]) is called out.

To cancel a hot cue ([1] – [4]), press the corresponding button ([1] – [4]) while pressing the [DELETE] button.

Buttons [1] – [4] at which hot cues are set flash while the [DELETE] button is pressed.

- To set or call out hot cues [5] to [8], press buttons [1] to [4] while pressing the [SHIFT] button.
- To delete a hot cue from [5] to [8], press buttons [1] to [4] while pressing the [SHIFT] and [DELETE] buttons.
- [CUE TYPE] (the type of hot cue) can be changed by clicking [▼] to the left of the [CUE] icon.

### 13 KEY LOCK button

Switches the key lock function on/off.

When the key lock function is on, the key does not change even when the playing speed is changed with the [TEMPO] slider.

### 14 TEMPO RANGE button

The [TEMPO] slider's range of variation switches each time this is pressed.



### 15 TEMPO slider

- Move towards the + (front) side: The playing speed increases.
- Move towards the – (back) side: The playing speed decreases.

### 16 Jog dial

- Scratch

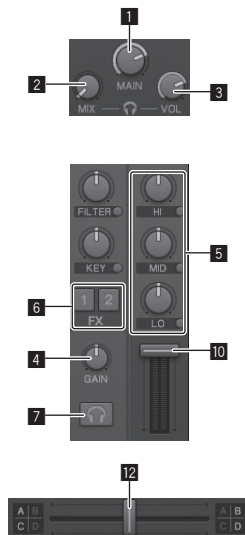
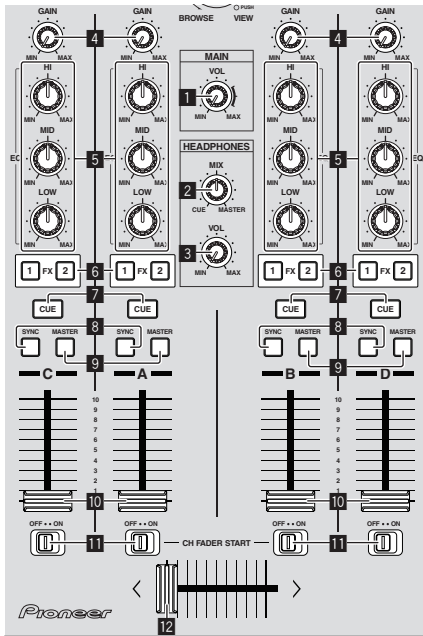
Spin the jog dial while pressing down on the top: The sound is played according to the direction and speed of rotation.

- Pitch bend

During playback, spin the outer section of the jog dial.

- Spin clockwise: The playing speed increases.
- Spin counterclockwise: The playing speed decreases.
- Stop spinning: Playback at the normal speed resumes.

## 3 Mixer



### 1 MAIN VOL control

Adjusts the sound level output from the master.

### 2 HEADPHONES MIX control

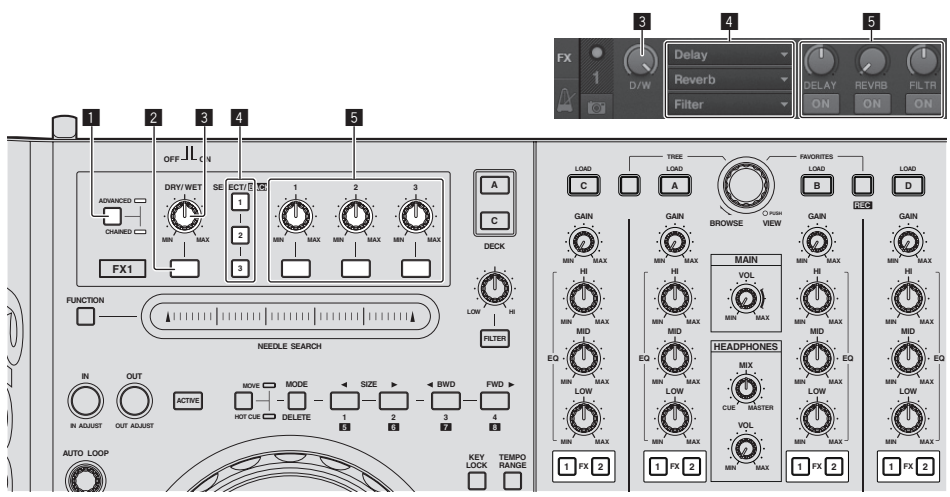
Adjusts the monitor volume balance between the sound of the deck for which the [CUE] button is pressed and the sound of [MASTER OUT 1] and [MASTER OUT 2].

- 3 HEADPHONES VOL control**  
Adjusts the audio level output from the [PHONES] terminal.
- 4 GAIN control**  
Adjusts the sound level input to the various decks.
- 5 EQ (HI, MID, LOW) controls**  
These adjust the sound quality input to the various decks. These adjust the [HI] (high range), [MID] (medium range) and [LOW] (low range), respectively.
- 6 Effect assign buttons**  
Press the [1] or [2] button to assign TRAKTOR effect unit [FX 1] or [FX 2] to the deck.
- 7 CUE button**  
The sound of decks for which the headphones [CUE] button is pressed can be monitored over headphones. When multiple headphones [CUE] buttons are pressed, the sound of the decks for which the buttons are pressed is mixed and output from the headphones.
- 8 SYNC button**  
The track on the deck for which the [SYNC] button is pressed is synchronized to the [BPM] and [Beat Grid] of the deck for which the [MASTER] button is pressed or of the master clock.

- 9 MASTER button**  
Sets the tempo of the deck for which the [MASTER] button is pressed as the master for synchronizing with the beat sync function.
- 10 Channel fader**  
Adjusts the sound level output from the various decks.
- 11 CH FADER START switch**  
Switches the [CH FADER START] function on/off. When the [CH FADER START] switch is set to [ON], the fader start and back cue functions can be used according to the movement of the channel faders.
  - Fader start: When the channel fader is moved from the front-most position towards the back while pausing at the cue point, playback starts immediately.
  - Back cue: When the channel fader is returned from the back to the front-most position, playback returns to the set cue point, cues there, and the pause mode is set immediately.
- 12 Crossfader**  
Switches the sound of the decks assigned to the left and right sides of the crossfader for output. The deck assignment can be changed with the [Deck Assign Button] at the sides of the TRAKTOR crossfader.

Do not pull on the channel fader and crossfader knobs with excessive force. The knobs are not designed to be removed. Pulling the knobs strongly may result in damaging the unit.

## 4 Effect



- The [Advanced] mode cannot be selected with TRAKTOR Pioneer DDJ-T1 EDITION.
- The effect panel can be switched to the [Advanced] mode when you upgrade to TRAKTOR PRO or TRAKTOR SCRATCH PRO.

- 1 ADVANCED/CHAINED selector button**
  - [Chained] mode: Up to 3 effects can be selected on the effect panels and operated simultaneously.
  - [Advanced] mode: The parameters of the one selected effect can be adjusted in detail.
- 2 Effect button**  
This button is exclusively for use in the [Advanced] mode.
- 3 DRY/WET control**  
Changes the balance between the effect sound and original sound.
- 4 SELECT/BACK button**  
The effect type switches each time the button is pressed. With TRAKTOR Pioneer DDJ-T1 EDITION, the 6 types of effects below can be used.

→ [no Effect] → [Delay] → [Reverb] → [Flanger] → [Beatmasher2] → [Gater]

— When the [SELECT/BACK] button is pressed while pressing the [SHIFT] button, the direction in which the effect types switch is reversed.

- When in the [Advanced] mode, the effect type is switched by pressing the [1] button for [SELECT/BACK].
  - 5 Effect control**
    - Effect control dials  
The linked functions differ depending on the TRAKTOR effect panel's mode.
      - [Chained] mode: Adjusts the balance between the effect sound of the each effects and the original sound.
      - [Advanced] mode: Adjusts the various parameters of the selected effect.
    - Effect control buttons  
The linked functions differ depending on the TRAKTOR effect panel's mode.
      - [Chained] mode: Switches the various effects on/off.
      - [Advanced] mode: When the effect control [1] button is pressed, all the effect setting values return to the default setting values.
- When effect control buttons [2] and [3] are pressed, the various parameters switch between on and off. The types of parameters differ according to the effect.

---

---

# Operations

---

---

## Importing tracks to TRAKTOR

This function is operated not on the DDJ-T1 but on the computer.

**From Explorer or Finder, drag & drop music files or folders containing music files to [Track Collection] in TRAKTOR's [TREE] area.**

- Right-click [Track Collection] (on Mac OS X, click [Track Collection] while pressing the [control] key), then select [Import Music Folders] from the menu. All the music files in your system's [My Music] or [Music] folder are imported.

---

---

## Creating playlists

This function is operated not on the DDJ-T1 but on the computer.

**1 Right-click [Playlists] in TRAKTOR's [TREE] area.**

- For Mac OS X, click it while pressing the [control] key.

**2 From the menu, select [Create Playlist].**

**3 Input the playlist name, then click [OK].**

The playlist you have created is displayed at [Playlists].

**4 Drag & drop music files to the playlist you have created to add them.**

---

---

## Creating a FAVORITES

This function is operated not on the DDJ-T1 but on the computer.

**Drag & drop the playlist folder to an open [FAVORITES] slot.**

---

---

## Loading tracks in decks

**1 Turn the rotary selector while pressing the [TREE] button.**

Select the playlist or folder.

- To select among [FAVORITES], turn the rotary selector while pressing the [FAVORITES] button.
- When the rotary selector is pressed at an item marked [+] while pressing the [TREE] button, the folder opens or closes.

**2 Release the [TREE] or [FAVORITES] button and turn the rotary selector.**

Select the track.

- When the rotary selector is turned while pressing the [SHIFT] button, the cursor jumps by pages.

**3 Press the [LOAD] buttons for the decks into which you want to load the tracks.**

The selected tracks are loaded into the respective decks.

---

---

## Playing iTunes music files

If you are managing music files with iTunes, the iTunes library and playlists can be accessed directly with the TRAKTOR browser.

**1 Turn the rotary selector while pressing the [TREE] button to select iTunes.**

**2 Browsing the library and playlists in the same way as with iTunes**



- The iTunes library and playlists cannot be edited with the TRAKTOR browser.
- When played from the TRAKTOR browser, iTunes music files are automatically imported to the TRAKTOR [Track Collection] list.

---

---

## Enlarging the browse display area

**Press the rotary selector.**

 switches to  and the browse display area is enlarged.

- To return to the normal display, press the rotary selector again.

---

---

## Playback

**Press the [PLAY/PAUSE ►/II] button.**

---

---

## Pausing

**During playback, press the [PLAY/PAUSE ►/II] button.**

---

---

## Adjusting the playing speed manually (Tempo Control)

**Move the [TEMPO] slider forward or backward.**

The playing speed increases when the slider is moved to the [➕] side (towards you), decreases when the slider is moved to the [➖] side (away from you).

The percentage by which the playing speed is changed is shown on the playing speed display.

---

---

## Selecting the playing speed adjustment range

**Press the [TEMPO RANGE] button.**

The [TEMPO] slider's range of variation switches each time the button is pressed.

The range of variation setting is shown on the playing speed range of variation display.

- The playing speed can also be adjusted automatically (*Synchronizing the playing speed with other decks (beat sync)* on page 21).

---

---

## Adjusting the playing speed without changing the pitch (Key Lock)

**Press the [KEY LOCK] button.**

The [KEY LOCK] indicator and  light.

When in the key lock mode, the pitch does not change even when the playing speed is changed.

---

---

## Set the cue

**1 During playback, press the [PLAY/PAUSE ►/II] button.**

Playback is paused.

## 2 Press the [CUE] button.

Cue point (▲) is set at the position at which playback was paused. The [PLAY/PAUSE ►/II] indicator flashes and the [CUE] indicator lights. No sound is output at this time.

- When a new Cue Point is set, the previously set Cue Point is deleted.
- For information about setting cue points, see **MOVE PANEL/HOT CUE PANEL** on page 18.

## Adjusting the cue point position

### 1 Spin the jog dial while pressing down on the top.

The pause position is adjusted.

### 2 Press the [CUE] button.

Cue point (▲) is set to the [Beat Grid] nearest the position at which the button was pressed.

## Returning to Cue Point (Back Cue)

### During playback, press the [CUE] button.

The set immediately returns to the currently set cue point and pauses.

- When the [PLAY/PAUSE ►/II] button is pressed, playback starts from the cue point.

## Checking Cue Point (Cue Point Sampler)

### Keep pressing the [CUE] button after returning to the cue point.

Playback starts from the set cue point.

Playback continues as long as the [CUE] button is pressed.

## Setting Cue Point during playback (Real Time Cue)

### During playback, press the [IN (IN ADJUST)] button at the position at which you want to set the cue point.

Cue point (▲) is set to the [Beat Grid] nearest the position at which the button was pressed.

## Using the mixer functions

### Outputting sound

Set the volume of the power amplifiers connected to the [MASTER OUT 1, MASTER OUT 2] terminals to an appropriate level. Note that very loud sounds will be output if the volume is set too high.

#### 1 Turn the [GAIN] control.

Adjusts the sound level input to the various decks.

#### 2 Set the channel fader to the inner position.

Adjusts the sound level output from the various decks.

#### 3 Set the crossfader.

Switch the deck whose sound is to be output from the speakers.

- Left edge: Sound is output from deck [A] or [C].
- Center: The sound of all the decks is mixed and output.
- Right edge: Sound is output from deck [B] or [D].
- The deck assignment can be changed with the [Deck Assign Button] at the sides of the TRAKTOR crossfader.

#### 4 Turn the [MAIN VOL] control.

Audio signals are output from the [MASTER1] and [MASTER2] terminals.

## Adjusting the sound quality

Turn the [EQ (HI, MID, LOW)] controls for the various decks.

## Monitoring sound with headphones

### 1 Connect headphones to the [PHONES] jack.

### 2 Press the headphones [CUE] button for the deck you want to monitor.

### 3 Turn the [HEADPHONES MIX] control.

- Turn counterclockwise: The sound of the deck for which the headphones [CUE] button is pressed becomes relatively louder.
- Center position: The sound of the deck for which the headphones [CUE] button is pressed and the [MASTER OUT 1, MASTER2] sound have the same volume.
- When turned clockwise: The volume of the sound output from the [MASTER OUT 1, MASTER2] terminals becomes relatively louder.

### 4 Turn the [HEADPHONES VOL] control.

The sound of the deck for which the headphones [CUE] button is pressed is output from the headphones.

- When the headphones [CUE] button is pressed again, monitoring is canceled.

## Using the effect function

TRAKTOR is equipped with two effect units, [FX 1] and [FX 2].

Each of the effect units can be assigned to one or more decks.

- TRAKTOR PRO and TRAKTOR SCRATCH PRO are equipped with four effect units.

## Adding effects ([Chained] mode)

### 1 Press the effect assign button.

Press the [1] or [2] button to assign TRAKTOR effect unit [FX 1] or [FX 2] to the deck.

### 2 Turn the effect control dial.

Adjust the balance between the effect sound for the different effects and the original sound.

### 3 Press the effect control button.

Press the effect control button for the effect you want to apply.

- When the button is pressed again, the effect is turned off.
- The effect unit's three effects can also be turned on simultaneously.

### 4 Turn the [DRY/WET] control.

Adjust the balance between the effect sound for all of the effects together and the original sound.

## Synchronizing the playing speed with other decks (beat sync)

### 1 Press the [MASTER] button on the currently playing deck.

The deck whose [MASTER] button was pressed is set as the master for synchronization.

The [MASTER] indicator and [MASTER] in TRAKTOR light.

### 2 Press the [SYNC] button on a deck not set as the master for synchronization.

That deck is synchronized to the [BPM] and [Beat Grid] of the track on the deck set as the master for synchronization.

The [SYNC] indicator and [SYNC] in TRAKTOR light.

- For information about setting the master for synchronization, see *Setting the master for synchronization* on page 22.
- In the cases below, the [SYNC] function may not operate properly.
  - When the loop length is under 1 beat
  - When the [BPM] of the track on the deck for which the [MASTER] button is pressed exceeds the adjustable tempo range of the track on the deck for which the [SYNC] button is pressed
  - When the track has not been analyzed.
- To set the deck back as it was, click [▼] and select [Internal Playback].

## Setting the master for synchronization



### Click [M].

The master for synchronization can be selected and set from among the four types below.

- Deck master (manual): The deck for which the [MASTER] button is pressed is set as the master.
- Deck master (auto): Of the tracks being played, the deck with the track that has been playing longest is set as the master. It is also possible to set the deck for which the [MASTER] button is pressed as the master.
- Clock master (internal): The BPM value input by the user or the BPM value set by tapping is set as the master.
- Clock master (external): The MIDI clock of the external device is set as the master.

By default, the master for synchronization is set to deck master (auto). When set to clock master (internal or external), the [MASTER] button is disabled.

## Inputting the sound of a microphone or external device

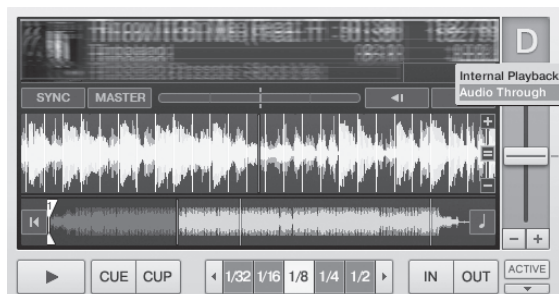
The sound of an external device connected to the [AUX IN] or [MIC] terminals can be input to any of the decks and mixed.

By default on TRAKTOR Pioneer DDJ-T1 EDITION, the sound of external devices connected to the [AUX IN] and [MIC] terminals is input to deck [D]. To achieve a suitable volume, adjust the [VOL] control on this unit's rear panel according to the device connected to the [AUX IN] terminals.

- Pioneer DJ player: Set near the center position.
- Portable audio player or other device with low volume: Set clockwise of the center position.
- When operating on USB bus power, the [AUX IN] and [MIC] terminals cannot be used.

### Click [▼] on deck [D].

From the menu, select [Audio Through].




- To set the deck to which the external device's audio signals are input to a different deck, change the setting at [Input Routing] in [Preferences].
- When the external device's audio input deck is set to one of decks [A] – [D], the effect functions, filter functions and EQ controls can be used.

# Changing the TRAKTOR Preferences

Change TRAKTOR's environmental settings according to the usage conditions of your hardware. For details on TRAKTOR's environmental settings, see the TRAKTOR manual.

- If you wish to restore the changes to the environmental settings to their defaults, please check the following website.  
<http://www.prodjnet.com/support/>

- 1 Click the TRAKTOR  (Preferences Button) button. Open the TRAKTOR settings menu.
- 2 Select the category and make the settings.

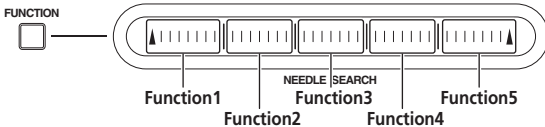
## List of TRAKTOR Pioneer DDJ-T1 EDITION setting items


Category	Descriptions
Audio Setup	Select the audio devices to be used for audio input/output. Set the sampling rate and latency.
Output Routing	<b>[Internal]:</b> Use TRAKTOR's internal mixer. To use only with this unit, select <b>[Internal]</b> . <b>[External]:</b> Use an external mixer. Set the master audio output and monitor audio output terminals.
Input Routing	Set the audio input from an external device (portable audio player, microphone, etc.) to a deck.
Loading	Set the conditions and functions for loading tracks to the decks.
Transport	Set the tempo and key lock functions.
Mixer	Set the auto gain, master limiter, etc.
Effects	Set the types of effects to be displayed when selecting effects.
Recording	Set whether to record the TRAKTOR master audio output or the external audio input. Set the location where recorded audio files are stored.
File Management	Make the settings for track importing, auto analysis, the analysis BPM range, etc.
Data Location	Set the path to the data (music files, iTunes library files, etc.).
Global View Options	Set the deck area display method, the font size to be used with the browser, etc.
Controller Manager	Assign TRAKTOR functions to the controller, keyboard, etc.
Traktor Kontrol X1	Set this when using Native Instruments' Traktor Kontrol X1.

## Assigning the desired functions to the [NEEDLE SEARCH] pad

When assigning the desired functions to the [NEEDLE SEARCH] pad, first press the [FUNCTION] button to turn [FUNCTION] on.

- Functions can be assigned to up to 5 points on the [NEEDLE SEARCH] pad.



- 1 Click the TRAKTOR  (Preferences Button) button. Open the TRAKTOR settings menu.
- 2 Click **[Controller Manager]**.
- 3 Click **[Device]** under **[Device Setup]**. From the pull-down menu, select **[Pioneer. DDJ-T1]**.
- 4 Click **[Add In...]** under **[Assignment Table]**. From the pull-down menu, select the function to be assigned.

- 5 Click **[Learn]** under **[Device Mapping]**. Turn **[Learn]** on.

- 6 Touch the **[NEEDLE SEARCH]** pad. Touch the point at which you want to assign the function. The name of the point touched is displayed in the field to the right of **[Learn]** at **[Device Mapping]**.
  - The place at which the function is to be assigned can also be selected by clicking the field to the right of **[Learn]** at **[Device Mapping]**.

- 7 Click **[Learn]** again. Turn **[Learn]** off.

- 8 Click **[Close]** at the bottom right of the screen. Close the TRAKTOR settings menu.

## Setting the details of the functions assigned to the [NEEDLE SEARCH] pad

### ❖ Setting the [Mapping Details]

- **[Modifier Conditions]:** Sets the operating conditions for the function selected at **[Add In...]**. The operating conditions are switched with the **[Value]** setting.
- **[Type of Controller]:** Selects **[Button]**, **[Fader/Knob]**, **[Encoder]**, etc. When assigned to **[Function 1]** – **[Function 5]**, this is set to **[Button]**.
- **[Interaction Mode]:** Sets the way in which the functions of TRAKTOR and the controller are associated.
- **[Hold]:** The function operates while the button is pressed.
- **[Toggle]:** The function's properties switch each time the button is pressed.

### ❖ Setting the [Button Options]

Even more detailed settings can be made depending on the settings at **[Type of Controller]** and **[Interaction Mode]**. For example, when **[Type of Controller]** is set to **[Button]** and **[Interaction Mode]** is set to **[Hold]**, the **[Invert]** setting can be made.

# Additional information

## Troubleshooting

- Incorrect operation is often mistaken for trouble or malfunction. If you think that there is something wrong with this component, check the points below. Sometimes the trouble may lie in another component. Inspect the other components and electrical appliances being used. If the trouble cannot be rectified after checking the items below, ask your nearest Pioneer authorized service center or your dealer to carry out repair work.
- This unit may not operate properly due to static electricity or other external influences. In this case, proper operation may be restored by turning the power off, waiting 1 minute, then turning the power back on.

Problem	Check	Remedy
The power is not turned on. None of the indicators light.	Is the power <b>[ON/OFF]</b> switch set to <b>[ON]</b> ?	Set the power <b>[ON/OFF]</b> switch to <b>[ON]</b> .
The jog dial indicator will not light. The indicators (aside from the jog dial) are dim. The <b>[AUX IN]</b> and <b>[MIC]</b> terminals cannot be used. The volume of the headphones is low.	Are you operating on USB bus power?	Connect the included AC adapter. (page 14)  There are limitations when operating on USB bus power. To use the unit without these limitations, connect the included AC adapter.
This unit is not recognized.	Is the power <b>[ON/OFF]</b> switch set to <b>[ON]</b> ?	Set the power <b>[ON/OFF]</b> switch to <b>[ON]</b> .
	Is the included USB cable properly connected?	Connect the included USB cable properly. (page 14)
	Is <b>[CTRL]</b> lit in TRAKTOR?	Press any button on this unit and check that <b>[CTRL]</b> lights in TRAKTOR.
	—	Check that <b>[Pioneer. DDJ-T1]</b> is selected at <b>[Preferences] &gt; [Controller Manager] &gt; [Device Setup] &gt; [Device]</b> . (page 23)
This unit operates on USB bus power even when the included AC adapter is used.	Is the included AC adapter properly connected?	Mount the power plug properly on the included AC adapter. (page 5) Connect the included AC adapter properly to the power outlet. (page 14) Connect the included AC adapter's DC plug properly to this unit. (page 14)
	—	—
Power does not turn on when operating on USB bus power.	Is the included USB cable properly connected?	Connect the computer and this unit directly using the included USB cable. USB hubs cannot be used. (page 14)
	The computer's USB power supply capacity may be insufficient.	Use the included AC adapter.
	Are you using a USB hub?	USB hubs cannot be used. Connect the computer and this unit directly using the included USB cable. (page 14)
	Are you using a commercially available USB cable?	Use the included USB cable.
Positions of controls or sliders differ on this unit and in TRAKTOR.	—	When this unit's controls and sliders are moved, the TRAKTOR controls and sliders move in sync.
Music files cannot be played.	Are the music files damaged?	Play music files that are not damaged.
No tracks are displayed in the <b>[TRACK]</b> area.	Have the music files been properly imported?	Import the music files properly. (page 20)
	Have you selected a <b>[Playlists]</b> or <b>[FAVORITES]</b> slot that does not contain any tracks?	Select a <b>[Playlists]</b> or <b>[FAVORITES]</b> slot that contains tracks.
Music files cannot be found.	Have they been properly recorded?	Check the settings at <b>[Preferences] &gt; [Recording]</b> .  Turn the rotary selector while pressing the <b>[TREE]</b> button and select <b>[Audio Recordings]</b> . (page 16)
Volume of device connected to <b>[AUX IN]</b> terminals is low.	Is the <b>[AUX IN]</b> terminals' <b>[VOL]</b> control set to the proper position?	Set the audio level to a suitable level for the connected device. (page 22)
Distorted sound.	Are the <b>[MAIN VOL]</b> and <b>[GAIN]</b> controls set to the proper position?	Adjust the <b>[MAIN VOL]</b> and <b>[GAIN]</b> controls while watching the <b>[MAIN]</b> level indicator in TRAKTOR.
	Is the audio level being input to the <b>[AUX IN]</b> and <b>[MIC]</b> terminals set to a suitable level?	Set the audio level input to the terminals to a suitable level for the connected devices.
	Are the <b>[MASTER OUT 1]</b> terminals set to unbalanced output with a monaural cable?	With an unbalanced output, the sound will be distorted unless the output is set to a suitable level. Use the <b>[MAIN VOL]</b> control to set the output to a suitable level.
Sound being played is interrupted.	Are the included AC adapter and included USB cable properly connected?	The sound will be interrupted if the included AC adapter's power cord or included USB cable is disconnected from this unit during playback. (page 14) Properly fasten the included AC adapter's power cord and the included USB cable to this unit's cord hook. (page 14)
	Is the driver software's latency value suitable?	Set the driver software's latency to a suitable value. (page 12)
Sound of an external device or microphone cannot be output.	Is <b>[Audio Through]</b> set?	Set <b>[Audio Through]</b> on decks whose sound you want to output. (page 22)



Problem	Check	Remedy
No sound is produced.	Are the connection cables properly connected?	Connect the connection cables properly. (page 14)
	Is the included USB cable properly connected?	Connect the computer and this unit directly using the included USB cable. USB hubs cannot be used. (page 14)
	Are terminals or plugs dirty?	Wipe any dirt off terminals and plugs before connecting.
	Is the driver software properly set?	Set the driver software properly. (page 11)
	Are <b>[Audio Setup]</b> , <b>[Output Routing]</b> and <b>[Input Routing]</b> in TRAKTOR properly set?	Check that <b>[Preferences]</b> is set as shown below. <b>[Audio Setup]</b> > <b>[Audio Device]</b> > <b>[PIONEER DDJ-T1]</b> (Mac OS X) or <b>[Pioneer DDJ ASIO]</b> (Windows) <b>[Output Routing]</b> > <b>[Output Monitor]</b> [L] > <b>[3:DDJ-T1 PHONES L]</b> and <b>[R]</b> > <b>[4:DDJ-T1 PHONES R]</b> <b>[Output Routing]</b> > <b>[Output Master]</b> [L] > <b>[1:DDJ-T1 MASTER L]</b> and <b>[R]</b> > <b>[2:DDJ-T1 MASTER R]</b> <b>[Input Routing]</b> > <b>[Input Channel D]</b> [L(Mono)] > <b>[1:DDJ-T1 AUX/MIC L]</b> and <b>[R]</b> > <b>[2:DDJ-T1 AUX/MIC R]</b> Set properly so that the sound of the external device is input. (page 22)
Are the connected components and amplifiers properly set?	Set the external input selection and volume on the components and amplifiers properly.	
BPM or overall waveform is not displayed.	Has the music file been analyzed?	Put a check at <b>[Preferences]</b> > <b>[File Management]</b> > <b>[Analyze new tracks when loading into deck]</b> , then reload the track in the deck.
<b>[SYNC]</b> function does not work.	Have the music files been properly imported?	Reimport the music files and load them in the decks. (page 20)
	Has the music file been analyzed?	If music files cannot be analyzed automatically, input the <b>[Beat Grid]</b> manually.
<b>[SYNC]</b> function does not work even when files are analyzed.	Is <b>[BEAT MARKER (Grid)]</b> set for hot cue?	Set at least one <b>[BEAT MARKER]</b> to <b>[Grid]</b> . (page 17)
	Is the <b>[BPM]</b> of the track for the deck whose <b>[MASTER]</b> button is pressed too different from the <b>[BPM]</b> of the track for the deck whose <b>[SYNC]</b> button is pressed?	The <b>[SYNC]</b> function will not work properly if the <b>[BPM]</b> of the track for the deck whose <b>[MASTER]</b> button is pressed exceeds the adjustable tempo range of the track for the deck whose <b>[SYNC]</b> button is pressed.
	Are you scratching?	The <b>[SYNC]</b> function is disabled when scratching.
Fader starting is not possible.	Is the <b>[CH FADER START]</b> switch set to <b>[ON]</b> ?	Set the <b>[CH FADER START]</b> switch set to <b>[ON]</b> .
Are you in standby at the position at which the cue was set?	Are you in standby at the position at which the cue was set?	Either set the cue again or set the standby mode at the position at which the cue was set. (page 20)
Deck area display is small.	—	Double-click the track information display section (the part where the track name, BPM, etc., are displayed) in the deck area.
<b>[ADVANCED/CHAINED]</b> selector button does not work.	—	The <b>[Advanced]</b> mode cannot be selected with TRAKTOR Pioneer DDJ-T1 EDITION. The effect panel can be switched to the <b>[Advanced]</b> mode when you upgrade to TRAKTOR PRO or TRAKTOR SCRATCH PRO.
Sound is interrupted when the ASIO driver is set.	Has the ASIO driver been set while TRAKTOR was running?	Set the ASIO driver before starting up TRAKTOR. (page 11)
Back cue function does not work.	Is a cue point set?	Set a cue point. (page 20)
Loop play function does not work.	Are loop points set?	Set loop points. (page 20)

## Using as a controller for other DJ software

The DDJ-T1 also outputs the operating data for the buttons and dials in MIDI format. If you connect a computer with a built-in MIDI-compatible DJ software via a USB cable, you can operate the DJ software on this unit. The sound of music files being played on the computer can also be output from the DDJ-T1.

To use as a controller for other DJ software, first make the DJ software's audio and MIDI related settings. For details, see your DJ software's operating instructions.

# List of MIDI Messages

On this unit, the browser, deck, mixer and effect sections are connected with the MIDI channels shown below.

Deck <b>A</b>	MIDI channel <b>0</b>
Deck <b>B</b>	MIDI channel <b>1</b>
Deck <b>C</b>	MIDI channel <b>2</b>
Deck <b>D</b>	MIDI channel <b>3</b>
Effect <b>1</b>	MIDI channel <b>4</b>
Effect <b>2</b>	MIDI channel <b>5</b>
Browser, mixer	MIDI channel <b>6</b>

## 1 Browser

SW Name	MIDI message (this unit to computer)			Notes
	Bank	Number	Mode	
<b>TREE</b> button	96	66	dd	OFF=0, ON=127
Rotary selector (turn)	B6	64	dd	Difference count value from when previously operated <ul style="list-style-type: none"> <li>• Turn clockwise: 1 – (max) 30</li> <li>• Turn counterclockwise: 127 – (min) 98</li> </ul>
Rotary selector (press)	96	65	dd	OFF=0, ON=127
<b>FAVORITES (REC)</b> button	96	67	dd	OFF=0, ON=127
<b>LOAD A</b> button	96	70	dd	OFF=0, ON=127
<b>LOAD B</b> button	96	71	dd	OFF=0, ON=127
<b>LOAD C</b> button	96	72	dd	OFF=0, ON=127
<b>LOAD D</b> button	96	73	dd	OFF=0, ON=127

## 2 Deck

SW Name	MIDI message (this unit to computer)						Notes
	When SHIFT button is off			When SHIFT button is on			
<b>PLAY/PAUSE</b> ►/II button	9n	11	dd	9n	71	dd	OFF=0, ON=127
<b>CUE</b> button	9n	12	dd	9n	72	dd	OFF=0, ON=127
<b>AUTO LOOP (MOVE GRID)</b> control (turn)	Bn	19	dd	Bn	79	dd	Difference count value from when previously operated <ul style="list-style-type: none"> <li>• Turn clockwise: 1 – (max) 30</li> <li>• Turn counterclockwise: 127 – (min) 98</li> </ul>
<b>AUTO LOOP (MOVE GRID)</b> control (press)	9n	20	dd	9n	80	dd	OFF=0, ON=127
<b>IN (IN ADJUST)</b> button	9n	16	dd	9n	76	dd	OFF=0, ON=127
<b>OUT (OUT ADJUST)</b> button	9n	17	dd	9n	77	dd	OFF=0, ON=127
<b>ACTIVE</b> button	9n	18	dd	9n	78	dd	OFF=0, ON=127
<b>FUNCTION</b> button	9n	58	dd	9n	107	dd	OFF=0, ON=127
<b>NEEDLE SEARCH</b> pad	Bn	3	dd	Bn	8	dd	OFF = 0, ON = 1–127 (position information) 1 at left edge, 27 at right edge
Filter control	Bn	4	dd	Bn	9	dd	0-127
<b>FILTER</b> button	9n	69	dd	9n	116	dd	OFF=0, ON=127
<b>MOVE/HOT CUE</b> selector button	9n	42	dd	9n	91	dd	OFF=0, ON=127
<b>MODE DELETE</b> button	9n	45	dd	9n	94	dd	OFF=0, ON=127
<b>SIZE</b> ◀ button, <b>1</b> button, <b>5</b> button	9n	46	dd	9n	95	dd	OFF=0, ON=127
<b>SIZE</b> ▶ button, <b>2</b> button, <b>6</b> button	9n	47	dd	9n	96	dd	OFF=0, ON=127
◀ <b>BWD</b> button, <b>3</b> button, <b>7</b> button	9n	48	dd	9n	97	dd	OFF=0, ON=127
<b>FWD</b> ▶ button, <b>4</b> button, <b>8</b> button	9n	49	dd	9n	98	dd	OFF=0, ON=127
<b>KEY LOCK</b> button	9n	26	dd	9n	86	dd	OFF=0, ON=127
<b>TEMPO RANGE</b> button	9n	25	dd	9n	85	dd	OFF=0, ON=127
<b>TEMPO</b> slider	Bn Bn	0 32	MSB LSB	Bn Bn	5 37	MSB LSB	0–16383 0 at – side, 16383 at + side

SW Name	MIDI message (this unit to computer)						Notes
	When SHIFT button is off			When SHIFT button is on			
Jog dial (turn)	Bn Bn	1 33	MSB LSB	Bn Bn	6 38	MSB LSB	Difference count value from when previously operated <ul style="list-style-type: none"> <li>Turn clockwise: 1</li> <li>Turn counterclockwise: 16383</li> </ul> The cumulative difference count when the jog dial is turned 1 rotation is 2430.
Jog dial (press top)	9n	54	dd	9n	103	dd	OFF=0, ON=127

Indicator name	MIDI message (computer to this unit)						Indicator color	Notes
	When SHIFT button is off			When SHIFT button is on				
PLAY/PAUSE ►/II	9n	11	dd	9n	71	dd	Yellow-green	Off = 0, lit = 127
CUE	9n	12	dd	9n	72	dd	Orange	Off = 0, lit = 127
IN (IN ADJUST)	9n	16	dd	9n	76	dd	Orange	Off = 0, lit = 127
OUT (OUT ADJUST)	9n	17	dd	9n	77	dd	Orange	Off = 0, lit = 127
ACTIVE	9n	18	dd	9n	78	dd	Orange	Off = 0, lit = 127
FUNCTION	9n	58	dd	9n	107	dd	Red	Off = 0, lit = 127
FILTER	9n	69	dd	9n	116	dd	Orange	Off = 0, lit = 127
MOVE	9n	43	dd	9n	92	dd	Orange	Off = 0, lit = 127
HOT CUE	9n	44	dd	9n	93	dd	Orange	Off = 0, lit = 127
MODE DELETE	9n	45	dd	9n	94	dd	Orange	Off = 0, lit = 127
SIZE ◀, 1. 5	9n	46	dd	9n	95	dd	Orange	Off = 0, lit = 127
SIZE ▶, 2. 6	9n	47	dd	9n	96	dd	Orange	Off = 0, lit = 127
◀ BWD, 3. 7	9n	48	dd	9n	97	dd	Orange	Off = 0, lit = 127
FWD ▶, 4. 8	9n	49	dd	9n	98	dd	Orange	Off = 0, lit = 127
KEY LOCK	9n	26	dd	9n	86	dd	Red	Off = 0, lit = 127

- n is the channel number.  
Deck **A** is 0, Deck **B** is 1, Deck **C** is 2 and Deck **D** is 3.
- When operated while pressing the [SHIFT] button, the code is the code for when the [SHIFT] button is on.
- MIDI messages cannot be assigned to the [DECK (A, B, C, D)] or [SHIFT] buttons.

### 3 Mixer

SW Name	MIDI message (this unit to computer)				Notes
MAIN VOL control	B6	0	dd	0-127	
HEADPHONES MIX control	B6	1	dd	0-127	
HEADPHONES VOL control	B6	2	dd	0-127	
GAIN control	Deck <b>A</b>	B6	3	dd	0-127
	Deck <b>B</b>	B6	4	dd	0-127
	Deck <b>C</b>	B6	5	dd	0-127
	Deck <b>D</b>	B6	6	dd	0-127
EQ [HI] control	Deck <b>A</b>	B6	7	dd	0-127
	Deck <b>B</b>	B6	8	dd	0-127
	Deck <b>C</b>	B6	9	dd	0-127
	Deck <b>D</b>	B6	10	dd	0-127
EQ [MID] control	Deck <b>A</b>	B6	11	dd	0-127
	Deck <b>B</b>	B6	12	dd	0-127
	Deck <b>C</b>	B6	13	dd	0-127
	Deck <b>D</b>	B6	14	dd	0-127
EQ [LOW] control	Deck <b>A</b>	B6	15	dd	0-127
	Deck <b>B</b>	B6	16	dd	0-127
	Deck <b>C</b>	B6	17	dd	0-127
	Deck <b>D</b>	B6	18	dd	0-127

SW Name		MIDI message (this unit to computer)			Notes	
Effect assign buttons	1 button	Deck A	96	76	dd	OFF=0, ON=127
		Deck B	96	77	dd	OFF=0, ON=127
		Deck C	96	78	dd	OFF=0, ON=127
		Deck D	96	79	dd	OFF=0, ON=127
	2 button	Deck A	96	80	dd	OFF=0, ON=127
		Deck B	96	81	dd	OFF=0, ON=127
		Deck C	96	82	dd	OFF=0, ON=127
		Deck D	96	83	dd	OFF=0, ON=127
Headphones CUE button	Deck A	96	84	dd	OFF=0, ON=127	
	Deck B	96	85	dd	OFF=0, ON=127	
	Deck C	96	86	dd	OFF=0, ON=127	
	Deck D	96	87	dd	OFF=0, ON=127	
SYNC button	Deck A	96	88	dd	OFF=0, ON=127	
	Deck B	96	89	dd	OFF=0, ON=127	
	Deck C	96	90	dd	OFF=0, ON=127	
	Deck D	96	91	dd	OFF=0, ON=127	
MASTER button	Deck A	96	92	dd	OFF=0, ON=127	
	Deck B	96	93	dd	OFF=0, ON=127	
	Deck C	96	94	dd	OFF=0, ON=127	
	Deck D	96	95	dd	OFF=0, ON=127	
Channel fader	Deck A	B6	19	dd	0-127	
	Deck B	B6	21	dd	0-127	
	Deck C	B6	23	dd	0-127	
	Deck D	B6	25	dd	0-127	
CH FADER START switch	Deck A	96	96	dd	OFF=0, ON=127	
	Deck B	96	97	dd	OFF=0, ON=127	
	Deck C	96	98	dd	OFF=0, ON=127	
	Deck D	96	99	dd	OFF=0, ON=127	
Crossfader	B6	31	dd	0-127 0 at left side, 127 at right side		

Indicator name		MIDI message (computer to this unit)			Indicator color	Notes	
Effect assign buttons	1	Deck A	9n	76	dd	Orange	Off = 0, lit = 127
		Deck B	9n	77	dd	Orange	Off = 0, lit = 127
		Deck C	9n	78	dd	Orange	Off = 0, lit = 127
		Deck D	9n	79	dd	Orange	Off = 0, lit = 127
	2	Deck A	9n	80	dd	Orange	Off = 0, lit = 127
		Deck B	9n	81	dd	Orange	Off = 0, lit = 127
		Deck C	9n	82	dd	Orange	Off = 0, lit = 127
		Deck D	9n	83	dd	Orange	Off = 0, lit = 127
Headphones CUE	Deck A	9n	84	dd	Orange	Off = 0, lit = 127	
	Deck B	9n	85	dd	Orange	Off = 0, lit = 127	
	Deck C	9n	86	dd	Orange	Off = 0, lit = 127	
	Deck D	9n	87	dd	Orange	Off = 0, lit = 127	
SYNC	Deck A	9n	88	dd	Orange	Off = 0, lit = 127	
	Deck B	9n	89	dd	Orange	Off = 0, lit = 127	
	Deck C	9n	90	dd	Orange	Off = 0, lit = 127	
	Deck D	9n	91	dd	Orange	Off = 0, lit = 127	
MASTER	Deck A	9n	92	dd	Red	Off = 0, lit = 127	
	Deck B	9n	93	dd	Red	Off = 0, lit = 127	
	Deck C	9n	94	dd	Red	Off = 0, lit = 127	
	Deck D	9n	95	dd	Red	Off = 0, lit = 127	

## 4 Effect

SW Name	MIDI message (this unit to computer)						Notes
	When SHIFT button is off			When SHIFT button is on			
ADVANCED/CHAINED selector button	9n	64	dd	9n	92	dd	OFF=0, ON=127

SW Name	MIDI message (this unit to computer)						Notes
	When SHIFT button is off			When SHIFT button is on			
DRY/WET control	Bn	0	dd	Bn	16	dd	0-127
SELECT/BACK 1 button	9n	68	dd	9n	96	dd	OFF=0, ON=127
SELECT/BACK 2 button	9n	69	dd	9n	97	dd	OFF=0, ON=127
SELECT/BACK 3 button	9n	70	dd	9n	98	dd	OFF=0, ON=127
Effect control 1 control	Bn	2	dd	Bn	18	dd	0-127
Effect control 2 control	Bn	4	dd	Bn	20	dd	0-127
Effect control 3 control	Bn	6	dd	Bn	22	dd	0-127
Effect control 1 button	9n	71	dd	9n	99	dd	OFF=0, ON=127
Effect control 2 button	9n	72	dd	9n	100	dd	OFF=0, ON=127
Effect control 3 button	9n	73	dd	9n	101	dd	OFF=0, ON=127
Effect button	9n	67	dd	9n	95	dd	OFF=0, ON=127

Indicator name	MIDI message (computer to this unit)						Indicator color	Notes
	When SHIFT button is off			When SHIFT button is on				
ADVANCED	9n	65	dd	9n	93	dd	Orange	Off = 0, lit = 127
CHAINED	9n	66	dd	9n	94	dd	Orange	Off = 0, lit = 127
Effect control 1 button	9n	71	dd	9n	99	dd	Orange	Off = 0, lit = 127
Effect control 2 button	9n	72	dd	9n	100	dd	Orange	Off = 0, lit = 127
Effect control 3 button	9n	73	dd	9n	101	dd	Orange	Off = 0, lit = 127
Effect	9n	67	dd	9n	95	dd	Orange	Off = 0, lit = 127

- n is the channel number.  
Effect assign button **1** is 4, effect assign button **2** is 5.
- When operated while pressing the [SHIFT] button, the code is the code for when the [SHIFT] button is on.

## Disclaimer

- Pioneer is a registered trademark of Pioneer Corporation.
- Microsoft®, Windows Vista®, Windows® and Internet Explorer® are either registered trademarks or trademarks of Microsoft Corporation in the United States and/or other countries.
- Apple, Macintosh, Mac OS, Safari, iTunes, and Finder are trademarks of Apple Inc., registered in the U.S. and other countries.
- Intel and Pentium are trademarks of Intel Corporation in the U.S. and other countries.
- ASIO is a trademark of Steinberg Media Technologies GmbH.
- TRAKTOR is a registered trademark of Native Instruments.
- AMD Athlon is a trademark of Advanced Micro Devices, Inc.

The names of companies and products mentioned herein are the trademarks of their respective owners.

This product has been licensed for nonprofit use. This product has not been licensed for commercial purposes (for profit-making use), such as broadcasting (terrestrial, satellite, cable or other types of broadcasting), streaming on the Internet, Intranet (a corporate network) or other types of networks or distributing of electronic information (online digital music distribution service). You need to acquire the corresponding licenses for such uses. For details, see <http://www.mp3licensing.com>.

## Cautions on copyrights

Recordings you have made are for your personal enjoyment and according to copyright laws may not be used without the consent of the copyright holder.

- Music recorded from CDs, etc., is protected by the copyright laws of individual countries and by international treaties. It is the full responsibility of the person who has recorded the music to ensure that it is used legally.
- When handling music downloaded from the Internet, etc., it is the full responsibility of the person who has downloaded the music to ensure that it is used in accordance with the contract concluded with the download site.

## Specifications

### AC adapter

Power ..... AC 100 V to 240 V, 50 Hz/60 Hz  
 Rated current ..... 300 mA  
 Rated output ..... DC 5 V, 2 A

### General – Main Unit

Power consumption (when using AC adapter) ..... 700 mA  
 Power consumption (when using USB bus power) ..... 500 mA  
 Main unit weight ..... 4.9 kg (10.8 lb)  
 Max. dimensions ..... 680 mm (W) × 95.2 mm (H) × 317.7 mm (D)  
 (26.8 in. (W) × 3.7 in. (H) × 12.5 in. (D))  
 Tolerable operating temperature ..... +5 °C to +35 °C (+41 °F to +95 °F)  
 Tolerable operating humidity ..... 5 % to 85 % (no condensation)

### Audio Section

Rated output level  
**MASTER OUT 1** ..... 4.2 Vrms  
**MASTER OUT 2** ..... 2.1 Vrms  
 Total harmonic distortion  
**MASTER OUT 1** ..... 0.006 %  
**MASTER OUT 2** ..... 0.006 %  
 Frequency characteristic  
**MASTER OUT 1** ..... 20 Hz to 20 kHz  
**MASTER OUT 2** ..... 20 Hz to 20 kHz  
 S/N ratio (when playing on computer)  
**MASTER OUT 1** ..... 103 dB or greater (at rated output)  
**MASTER OUT 2** ..... 103 dB or greater (at rated output)  
 Input impedance  
**AUX** ..... 24 kΩ  
**MIC** ..... 10 kΩ  
 Output impedance  
**MASTER OUT 1** ..... 1 kΩ or less  
**MASTER OUT 2** ..... 1 kΩ or less  
**PHONES** ..... 42 Ω  
 Input / Output terminals  
**USB** terminal  
 B type ..... 1 set  
**MASTER OUT 1** output terminal  
 TRS phone jack (Ø 6.3 mm) ..... 1 set

**MASTER OUT 2** output terminal

RCA pin jacks ..... 1 sets

**PHONES** output terminal

Stereo phone jack (Ø 6.3 mm) ..... 1 set

Stereo mini phone jack (Ø 3.5 mm)..... 1 set

**AUX** input terminal

RCA pin jack ..... 1 sets

**MIC** input terminal

Phone jack (Ø 6.3 mm)..... 1 set

- For improvement purposes, specifications and design of this unit and the included software are subject to change without notice.



# Pioneer Electronics(USA) Inc.

## Limited Warranty

### WARRANTY PERIOD

For the period specified below from the date of original purchase (the warranty period), Pioneer Electronics(USA) Inc. (Pioneer) warrants that the products described below, if purchased directly from Pioneer or from an authorized Pioneer dealer or distributor in the United States and installed and operated according to operating instructions enclosed with the unit, will be repaired or replaced with a unit of comparable value, at the option of Pioneer, without charge to you for parts or labor for actual repair work if such products fail to function properly under normal use due to a manufacturing defect. Parts supplied under this warranty may be new or rebuilt at the option of Pioneer.

PRODUCTS COVERED	MODEL PREFIX	WARRANTY PERIOD	
		Parts	Labor
DJ Compact Disc Player	CDJ, CMX .....	1 YEAR	1 YEAR
DJ DVD Player	DVJ .....	1 YEAR	1 YEAR
Digital Media Player	DMP .....	1 YEAR	1 YEAR
DJ Mixer	DJM .....	1 YEAR	1 YEAR
DJ Effector	EFX .....	1 YEAR	1 YEAR
Video Switcher	VSW .....	1 YEAR	1 YEAR
DJ Controller	DDJ .....	1 YEAR	1 YEAR

This warranty covers the product during the warranty period whether in the possession of the original owner or any subsequent owner.

### WHAT'S NOT COVERED

This warranty does not cover the A-B Cross Fader in the DJ Mixer and DJ Controller (model prefix DJM and DDJ). This warranty does not cover any appearance item, any damage to the product resulting from alterations, modifications not authorized in writing by Pioneer, accident, misuse or abuse, damage due to lightning or to power surges or personal injury due to excessive sound pressure levels. This warranty does not cover the cost of parts or labor which would be otherwise provided without charge under this warranty, obtained from any source other than a Pioneer Authorized Service Company or other designated location. This warranty does not cover defects or damage caused by the use of unauthorized parts or labor, or from improper maintenance.

**PRODUCTS WITH ALTERED, DEFACED OR REMOVED SERIAL NUMBERS SHALL VOID THIS WARRANTY.**

### YOUR RIGHTS

**SOME STATES DO NOT ALLOW THE EXCLUSION OR LIMITATION OF INCIDENTAL OR CONSEQUENTIAL DAMAGES, SO THE FOLLOWING LIMITATIONS OR EXCLUSIONS MAY NOT APPLY TO YOU.**

**THE ABOVE WARRANTIES ARE IN LIEU OF AND EXCLUDE ALL OTHER WARRANTIES, EXPRESSED OR IMPLIED, INCLUDING WITHOUT LIMITATION IMPLIED WARRANTIES OF MERCHANTABILITY AND FITNESS FOR ANY PARTICULAR PURPOSE. IN NO EVENT SHALL PIONEER BE LIABLE FOR INCIDENTAL OR CONSEQUENTIAL DAMAGES ARISING OUT OF LOSS OF USE OR CLAIMS ASSERTED ON THE BASIS OF TORT (INCLUDING NEGLIGENCE), CONTRACT, OR OTHERWISE.**

### TO OBTAIN SERVICE

Pioneer has appointed a number of Authorized Industrial Service Companies throughout the U.S.A. should your product ever require service. To receive warranty service you will need to present your sales receipt or, if rented, your rental contract showing place and date of original purchase transaction.

Should it become necessary to ship the unit, you will need to package the product and send it, transportation prepaid, to an Authorized Service Company in the U.S.A. Carefully package the product using adequate padding material to prevent damage in transit. The original container is ideal for this purpose. Include in the package your name, address, telephone number where you can be reached during business hours, a copy of your sales receipt, and a detailed description of the problem.

To find the name and address of the nearest Pioneer Authorized service location, to obtain warranty service or for additional information about this warranty, please call or write:

PIONEER ELECTRONICS(USA) INC.  
CUSTOMER SUPPORT DIVISION  
P.O. BOX 1760  
LONG BEACH, CALIFORNIA 90801-1760  
1-800-872-4159

**DO NOT RETURN ANY PRODUCT TO ABOVE ADDRESS. IT IS NOT A SERVICE LOCATION.**

**TO ORDER REPLACEMENT PARTS CALL 800-228-7221**

RECORD THE PLACE AND DATE OF PURCHASE FOR FUTURE REFERENCE

Model No. \_\_\_\_\_ Serial No. \_\_\_\_\_ Purchase Date \_\_\_\_\_

Purchased From \_\_\_\_\_

KEEP THIS INFORMATION AND YOUR SALES RECEIPT IN A SAFE PLACE

Additional information

To register your product, find the nearest authorized service location, to purchase replacement parts, operating instructions, or accessories, please go to one of following URLs :

Pour enregistrer votre produit, trouver le service après-vente agréé le plus proche et pour acheter des pièces de rechange, des modes d'emploi ou des accessoires, reportez-vous aux URL suivantes :

**In the USA/Aux Etats-Unis**

<http://www.pioneerelectronics.com>

**In Canada/Aux Canada**

<http://www.pioneerelectronics.ca>

S018\_B1\_EnFr

Published by Pioneer Corporation.  
Copyright © 2010 Pioneer Corporation.  
All rights reserved.

---

**PIONEER CORPORATION**

1-1, Shin-ogura, Saiwai-ku, Kawasaki-shi, Kanagawa 212-0031, Japan

**PIONEER ELECTRONICS (USA) INC.**

P.O. BOX 1540, Long Beach, California 90801-1540, U.S.A. TEL: (800) 421-1404

**PIONEER ELECTRONICS OF CANADA, INC.**

300 Allstate Parkway, Markham, Ontario L3R 0P2, Canada TEL: 1-877-283-5901, 905-479-4411

K002\_PSV\_CU

Printed in

<DRB1536-A>





## Free Manuals Download Website

<http://myh66.com>

<http://usermanuals.us>

<http://www.somanuals.com>

<http://www.4manuals.cc>

<http://www.manual-lib.com>

<http://www.404manual.com>

<http://www.luxmanual.com>

<http://aubethermostatmanual.com>

Golf course search by state

<http://golfingnear.com>

Email search by domain

<http://emailbydomain.com>

Auto manuals search

<http://auto.somanuals.com>

TV manuals search

<http://tv.somanuals.com>