

Pioneer

DJ CONTROLLER DDJ-T1



**"TRAKTOR PRO 2"
Settings File Import Guide**

Introduction

Pioneer provides a settings file exclusively for use with the Native Instruments "TRAKTOR PRO 2" DJ software. The remix decks (sample decks) of "TRAKTOR PRO 2" can be controlled from this unit by importing this file.

- A paid upgrade to "TRAKTOR PRO 2" is needed before importing the settings file.
- Those who do not plan to use the remix deck (sample deck) do not need to import this file.
- Decks C and D are assigned as the remix decks (sample decks).
- Not all functions in TRAKTOR PRO 2 are supported. Users should make their own settings as necessary.
- For instructions on using the remix decks (sample decks) and making additional settings, see the TRAKTOR 2 manual, which can be accessed from [Help] menu of the TRAKTOR PRO 2 by selecting [Open Manual].
- Not all the functions of the remix deck can be controlled by DDJ-T1. Up to 4 samples can be controlled by each remix deck.
- The screenshots used in this guide may be different depending on the version of TRAKTOR 2.

Note:

- This settings file does not guarantee proper operation.
 - TRAKTOR PRO 2 is a product of Native Instruments.
- In principle, Pioneer is not in the position of answering any inquiries on the usage of the software itself. For further details of the usage, please refer to the manual of TRAKTOR and other resources.

Importing the Settings File

1. Download the Settings file from the Pioneer website: <http://pioneerdj.com/support/>

The downloaded file is compressed in ZIP format. Unzip it before starting. Depending on the browser you are using, the file may be unzipped automatically. In this case, this unzipping procedure is not necessary.

For Windows users

Right-click the downloaded file and select [Extract All]. The unzip wizard appears. Specify the folder in which the file is to be unzipped and unzip (decompress) it.

For Macintosh users

Double-click the downloaded ZIP file to unzip it. When unzipped, a file named [PIONEER_DDJ-T1_VXXX.tsi] is extracted.

2. Save the "PIONEER_DDJ-T1_VXXX.tsi" file downloaded in Step 1 in the desired location.

Example:

For Windows

My Documents¥Native Instruments¥Traktor2.x.x¥Settings

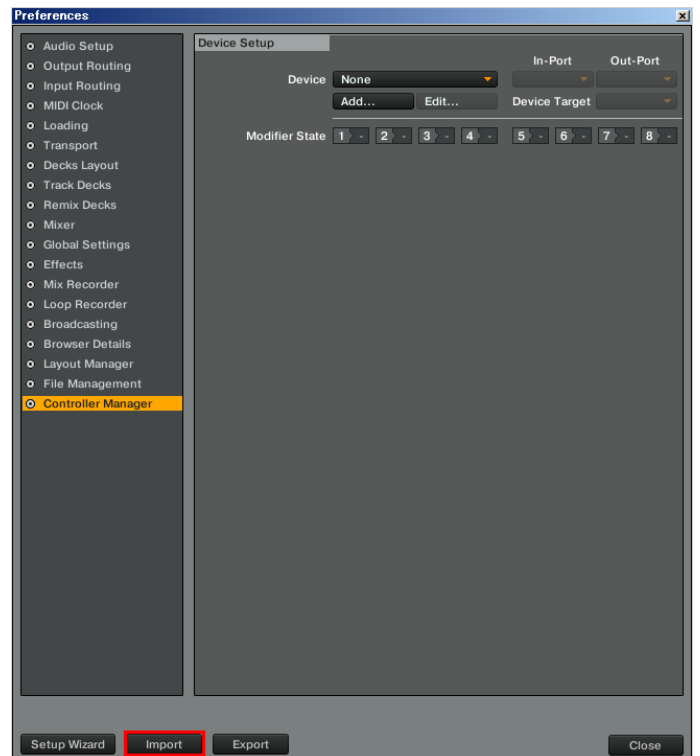
For Macintosh

~/Documents/Native Instruments/Traktor 2.x.x/Settings

3. Click [Import] on the [Preferences] window.

Select the "PIONEER_DDJ-T1_VXXX.tsi" file saved in Step 2.

* When another settings file has been imported, this procedure may not operate properly. In this case, delete the imported settings file before performing this operation. For details, see *Deleting Settings Files* on page 2.



4. Tick the checkbox of [Audio Device Settings] and click the [OK] to load MIDI mappings.

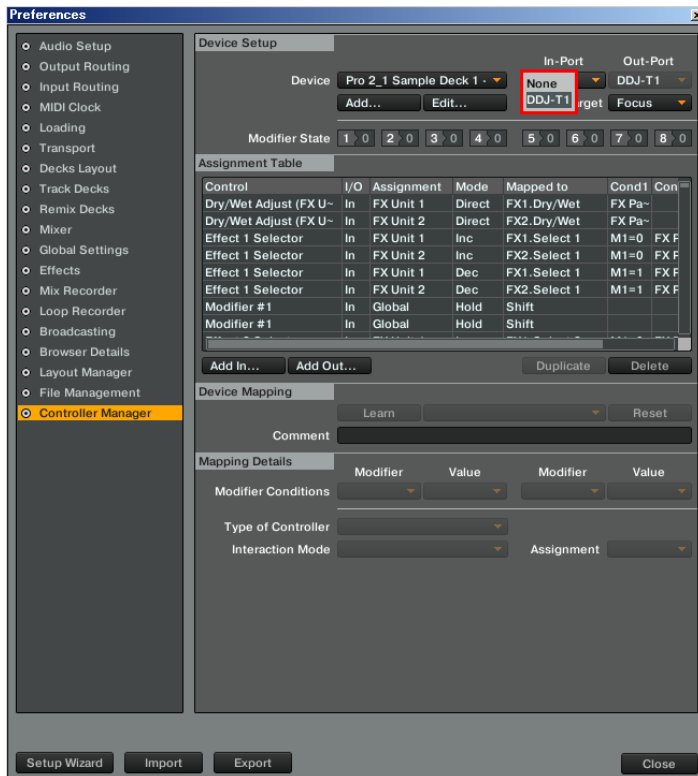
The HID and MIDI mappings are loaded, and the GUI layout for this settings file is set simultaneously. Use this settings file for remix decks (sample decks) C and D.



5. Open [Controller Manager]

5-1. Select [Pro 2_1 Sample Deck 1 – Pioneer.DDJ-T1] from the [Device] menu and select the DDJ-T1 from the [In-Port] menu.

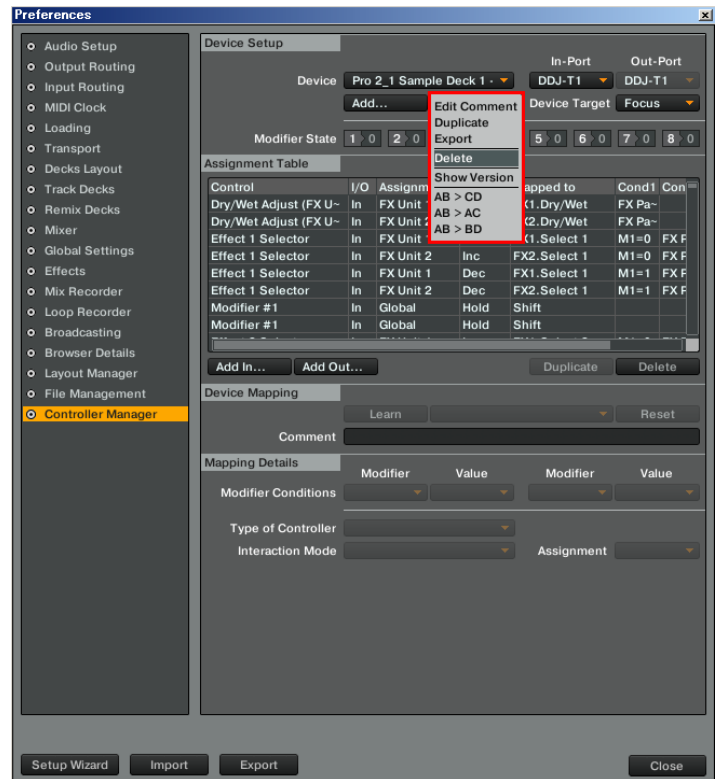
5-2. Select [Pro 2_1 Sample Deck 2 – Generic MIDI] from the [Device] menu and select the DDJ-T1 from both [In-Port] and [Out-Port] menus.



Deleting Settings Files

Open [Controller Manager].

From the [Preference] window, select the device to be deleted from the [Device] menu and select the [Delete] command from the [Edit...].

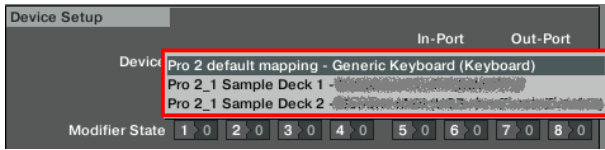


Use Decks C and D as Track Decks

7. Delete the following sample deck control mappings by following the procedure “Deleting Settings Files” on page 2.

“Pro 2_1 Sample Deck 1- Pioneer.DDJ-T1.....”

“Pro 2_1 Sample Deck 2- Generic MIDI.....”



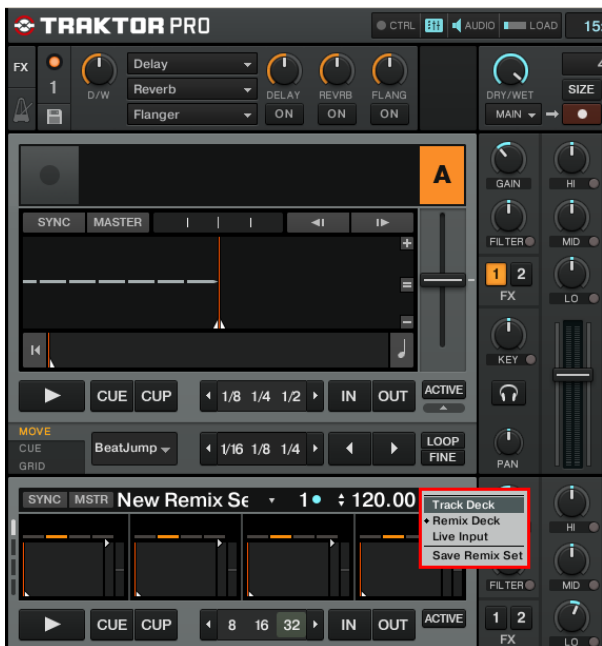
2. Disconnect the DDJ-T1 from the PC/Mac and reconnect it again.

* Problems may arise with TRAKTOR PRO 2 control if the DDJ-T1 is reconnected while TRAKTOR PRO 2 is running.

It is recommended that you reconnect the DDJ-T1 by the following procedure:

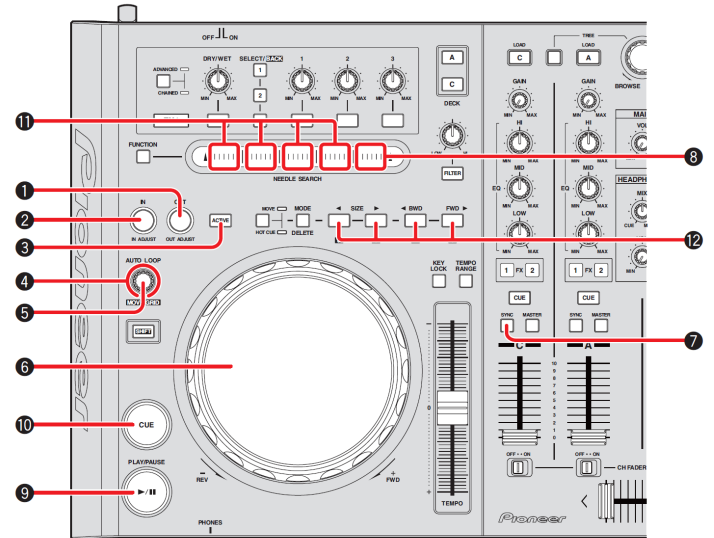
- 1) Quit TRAKTOR PRO 2.
- 2) Disconnect DDJ-T1 from the PC/Mac and reconnect it again.
- 3) Relaunch TRAKTOR PRO 2.

3. Click the alphabet on the deck where you want to change the assignment and select [Track Deck].



Operating “TRAKTOR PRO 2” Using the Buttons of This Unit

The default settings are as follows:



When Decks C and D are selected:

	DDJ-T1 button	Function	
Control all 4 slots at once	①	OUT (OUT ADJUST) button	-
	②	IN (IN ADJUST) button	-
	③	ACTIVE button	-
	④	AUTO LOOP (MOVE GRID) knob <rotate>	-
	⑤	AUTO LOOP (MOVE GRID) knob <Press>	-
	SHIFT +④	AUTO LOOP (MOVE GRID) knob <Rotate>	-
	SHIFT +⑤	AUTO LOOP (MOVE GRID) knob <Press>	-
	⑥	Jog dial	Slot Scratch On Slot Scratch Slot Tempo Bend
	⑦	SYNC button	Sync On/Off
	⑧	When [FUNCTION] is ON NEEDLE SEARCH pad	Group Play/Stop *1
Control a single slot	⑨	PLAY/PAUSE button	Group Play/Stop
	⑩	CUE button	Group Trigger
	⑪	When [FUNCTION] is ON NEEDLE SEARCH pad	Play *1
	⑫	MOVE PANEL/HOT CUE PANEL [1]/[5] button [2]/[6] button [3]/[7] button [4]/[8] button	See “About HOT CUE Assignment” below.

* 1 : Even when decks A and B are selected, if the [FUNCTION] button is turned on, the remix decks can be controlled by the [NEEDLE SEARCH] pad.

HOT CUE Assignment:

	Not Load	Load	Play
HOT CUE	Load From Deck	Play	One-shot : Stop Looped: Mute/Unmute
SHIFT +HOT CUE	Load From List	Retrigger	Retrigger
MOVE/DELETE +HOT CUE	Delete		

Note: For various functions of the remix decks, see the TRAKTOR 2 manual, which can be accessed from [Help] menu of the TRAKTOR PRO 2 by selecting [Open Manual].

About trademarks and registered trademarks

- Pioneer is the registered trademark of PIONEER CORPORATION.
- TRAKTOR is the registered trademark of Native Instruments GmbH.
- Microsoft®, Windows Vista®, Windows®, and Internet Explorer® are either registered trademarks or trademarks of Microsoft Corporation in the United States of America and other countries.
- Apple, Macintosh, Mac OS, Safari, iTunes, and Finder are trademarks of Apple Inc. registered in the United States of America and other countries.

©2013 PIONEER CORPORATION

All rights reserved

PIONEER CORPORATION

1-1, Shin-ogura, Saiwai-ku, Kawasaki-shi, Kanagawa 212-0031, Japan

<DRI1026-D-En>

Free Manuals Download Website

<http://myh66.com>

<http://usermanuals.us>

<http://www.somanuals.com>

<http://www.4manuals.cc>

<http://www.manual-lib.com>

<http://www.404manual.com>

<http://www.luxmanual.com>

<http://aubethermostatmanual.com>

Golf course search by state

<http://golfingnear.com>

Email search by domain

<http://emailbydomain.com>

Auto manuals search

<http://auto.somanuals.com>

TV manuals search

<http://tv.somanuals.com>