

Pioneer

DJ MIXER

DJM-T1

**“TRAKTOR 2”
Settings File Import Guide**

Introduction

Pioneer provides a settings file exclusively for the Native Instrument's "TRAKTOR 2" DJ software. Using this file lets you set a key mapping for taking maximum advantage of the DJM-T1's function.

- The settings file does not cover all functions. The customer must make other settings as necessary.

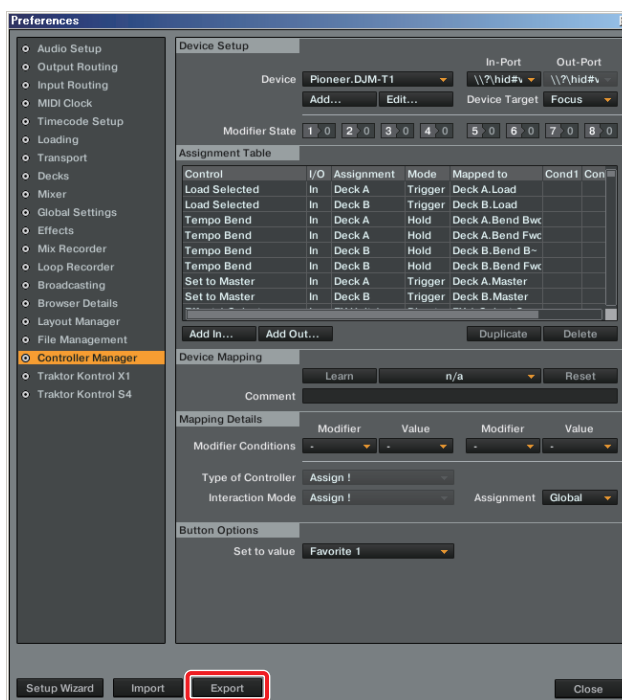
Backing up an existing settings file

When a new settings file is imported, the previous settings are cleared.

We recommend using the procedure below to backup existing settings so that they can be restored if necessary.

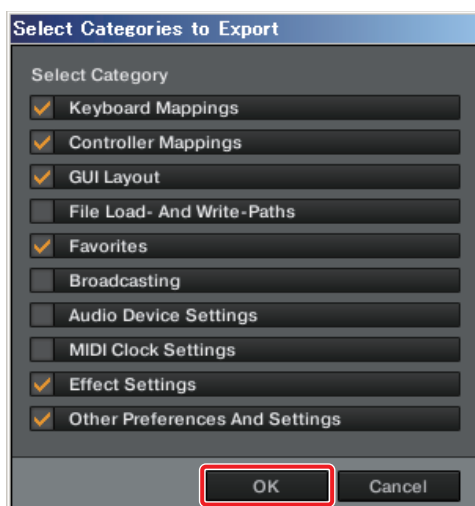
(This operation is not necessary for those using the TRAKTOR 2 software for the first time.)

1 Open the Preferences window, then click the [Export] button.



2 With the items to be backed up checked, click the [OK] button.

Save the file in the desired location with an easily understandable name (ex.: BackUp.tsi).



Importing the Settings File

- 1 Access the Pioneer website (<http://www.prodjnet.com/support/>), move from the Support top page to the Download page, and then download the settings file from DJM-T1 page.

Since the download file is in the ZIP compressed format, extract the file before proceeding.

The file may automatically expand depending on your browser, in which case there will be no need for you to expand it yourself.

- **Windows users**

Right click the download file and select [Extract All].

After the expansion wizard is displayed, specify the destination folder for the extracted files.

- **Mac OS users**

Double click the downloaded ZIP file to expand.

After the zip file is extracted, the file "PIONEER_DJM-T1_Vxxx.tsi" will be extracted.

- 2 Save the "PIONEER_DJM-T1_Vxxx.tsi" file downloaded in step 1 in the desired location.

Example: Windows > My Documents¥Native Instruments¥Traktor 2.x.x¥Settings

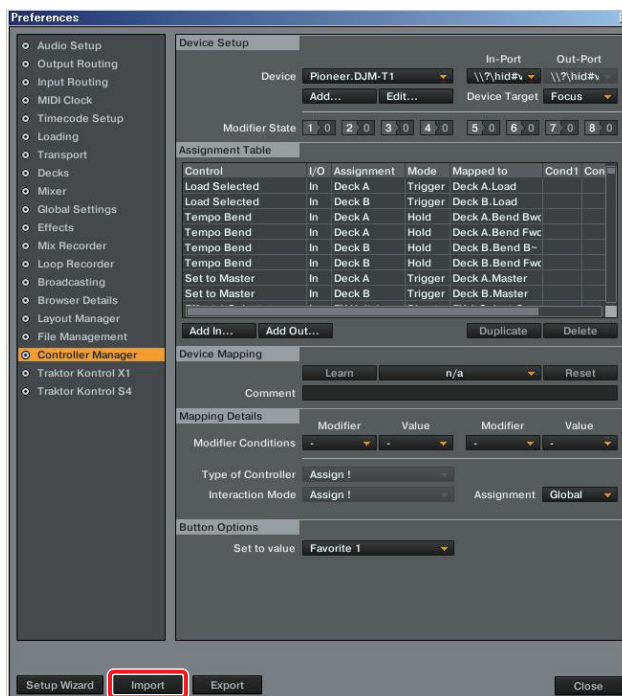
Mac OS > ~/Documents/Native Instruments/Traktor 2.x.x/Settings

- 3 Connect DJM-T1 to a computer by a USB cable and then turn on the power of DJM-T1.

- 4 Start TRAKTOR 2.

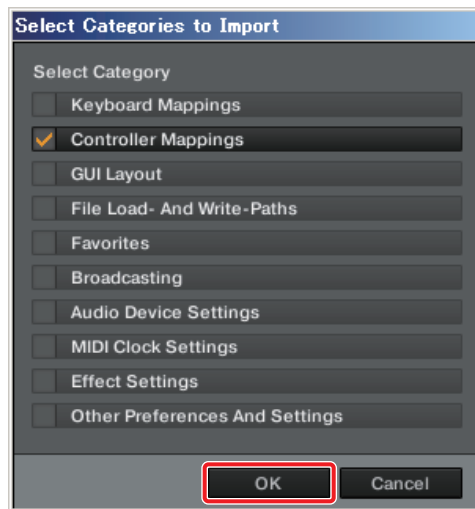
- 5 Open the Preferences window, then click the [Import] button.

Select the "PIONEER_DJM-T1_Vxxx.tsi" file saved in step 2.



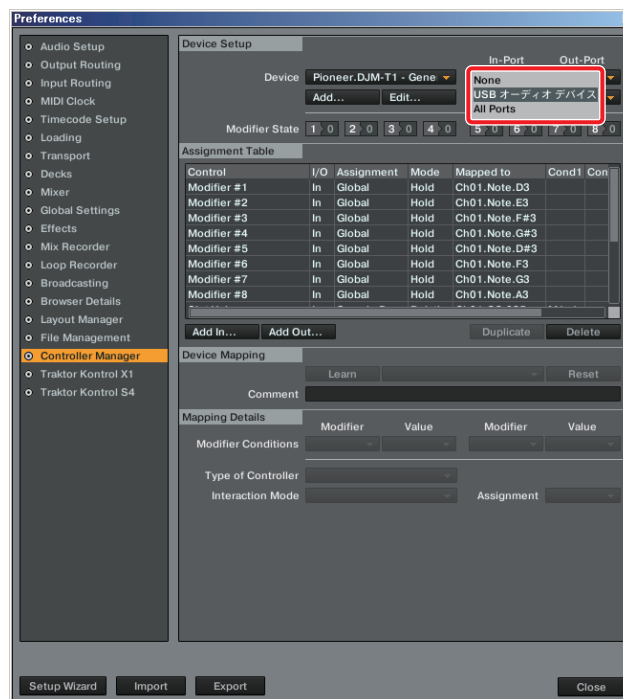
6 Click the [OK] button.

Check that [Controller Mappings] is checked.



7 Open Controller Manager.

- ① At [Device], select [Pioneer.DJM-T1], and at [In-Port], select the device corresponding to the DJM-T1.
- ② At [Device], select [Pioneer.DJM-T1 - Generic MIDI], and at [In-Port] and [Out-Port], select the audio device corresponding to the DJM-T1.

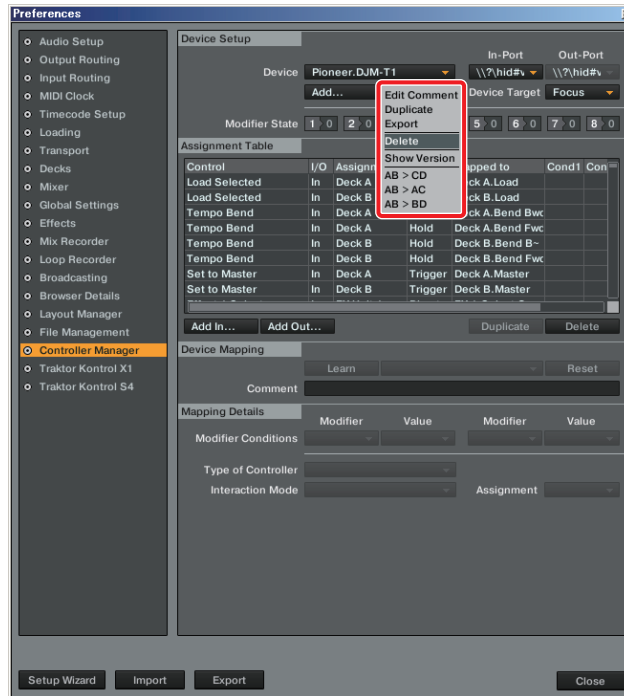


Deleting the settings

If you want to delete the settings, do so using the procedure below.

1 Open Controller Manager.

At [Device], select the setting to be deleted, then select [Delete] from [Edit...].



Using a settings sample for ADVANCED SHIFT functions

When the firmware of DJM-T1 is updated to ver. 2.00 or newer^(*1), and TRAKTOR 2 settings file is imported, ADVANCED SHIFT function is added and the group of MIDI codes are expanded.

ADVANCED SHIFT enables DJM-T1, by using the expanded MIDI, to assign functions of TRAKTOR 2 and other applications and to control many more functions of those applications.

TRAKTOR 2 settings file includes a settings sample where functions of TRAKTOR 2 are assigned using the expanded MIDI code.

The functions of [Button/Knob] are described in the "APPENDIX - Function list of settings sample of DJM-T1 ADVANCED SHIFT".

[*Button/Knob*]: The name of buttons and knobs of DJM-T1.

[*Function*]: Traktor 2 functions controlled by buttons and/or knobs when ADVANCED SHIFT is ON.

Category	Button/Knob	Function	MIDI	TRAKTOR 2 Control
Transport Section	Rotary Selector	Press Maximize BROWSER Display	Note F#8 In	Only Browser Toggle
		Turn BROWSER LIST PAGE Scroll	CC 027 In	List Select Up/Down
	DECK A LOAD (DUPLICATE) button	Select FAVORITE (BWD)	Note G8 In	Favorite Select
	DECK B LOAD (DUPLICATE) button	Select FAVORITE (FWD)	Note G#8 In	Favorite Select

Follow the procedures below to call out the functions assigned using ADVANCED SHIFT.

- ① Press the [SHIFT] button twice consecutively and you will see the [SHIFT] button light.
- ② Press and hold [SHIFT] button. You will see the [SHIFT] button flashing, and now you are in ADVANCED SHIFT mode.
While the [SHIFT] button is held, you stay in ADVANCED SHIFT mode.
- ③ Press and/or turn [Button/Knob] to use the assigned functions.

*1 If you use Windows 7 on your PC to connect DJM-T1 to, it is required to be updated to Service Pack 1.

Changing a settings sample of ADVANCED SHIFT

Assignments set by the settings file of ADVANCED SHIFT may be changed to meet your operating environment.

Before changing any specific function assigned to [Button/Knob], delete the function assigned to the [Button/Knob] in the settings sample.

The functions of [Button/Knob] are described in the "APPENDIX - Function list of settings sample of DJM-T1 ADVANCED SHIFT".

[Button/Knob]: The name of buttons and knobs of DJM-T1.

[Function]: Traktor 2 functions controlled by buttons and/or knobs when ADVANCED SHIFT is ON.

[MIDI]: MIDI code output when Button/Knob is pressed/turned.

[TRAKTOR2 Control]: "Control" defined in the assignment table of TRAKTOR 2 Controller Manager.

Follow the procedures below to change the settings sample assigned using ADVANCED SHIFT.

1 View the information in the settings sample.

Look for the information of [MIDI] and [TRAKTOR2 Control] associated with the [Button/Knob]-[Function] you want to change in the "APPENDIX - Function list of the settings sample of DJM-T1 ADVANCED SHIFT." In some cases, multiple functions listed in [TRAKTOR2 Control] may be assigned to a single [Button/Knob]-[Function].

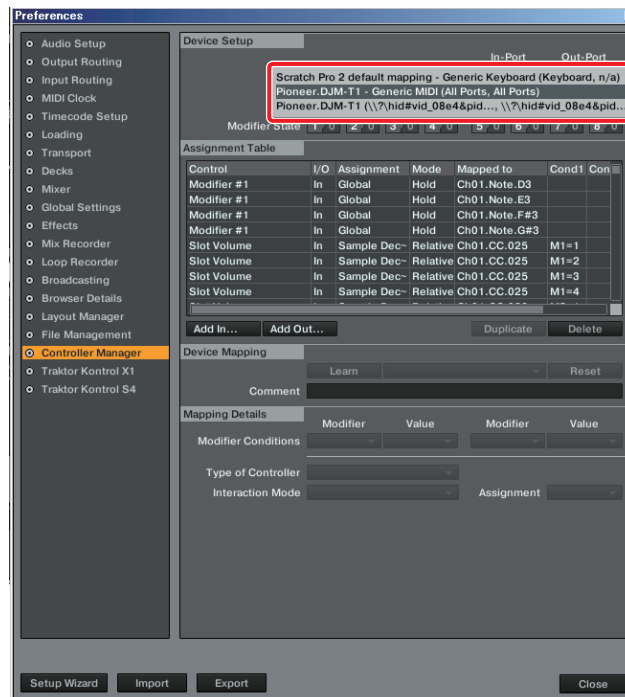
Category	Button/Knob		Function	MIDI	TRAKTOR 2 @ control
Hot cue/ Sampler Section	HOT CUE	Press	Set DECK A LOAD CUE	CC 044	In Cue Type
		Turn	Move playback position of DECK A	CC 045	In Seek Position
	SAMPLER	Press	Set DECK A LOAD CUE	CC 046	In Cue Type
		Turn	Move playback position of DECK A	CC 025	In Cue Set + Store
	DECK A AUTO LOOP (LOOP MOVE/SAMPLE VOLUME) knob				In Seek Position
	SAMPLED				CC 046 In Set Values

2 Connect DJM-T1 to the computer by the USB cable and turn on the power of DJM-T1.

3 Start Traktor 2.

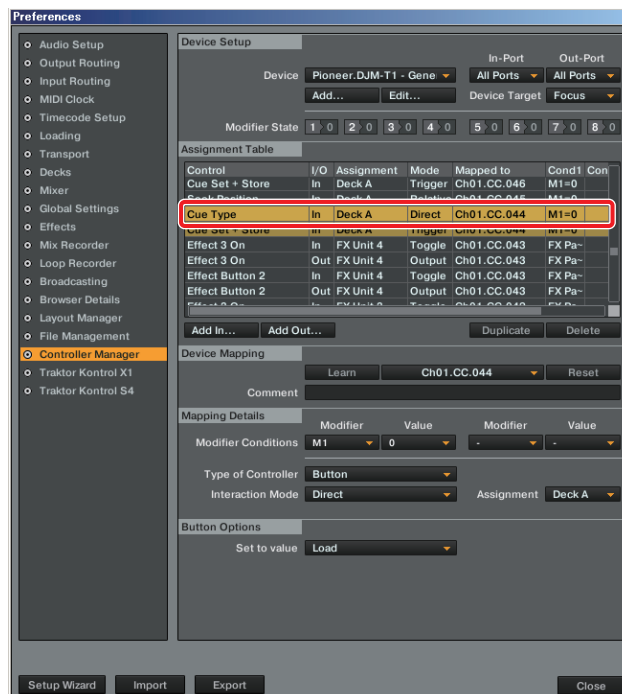
4 Open the Controller Manager

Select [Pioneer.DJM-T1 - Generic MIDI] from [Device Setup].



5 Select the settings in the "Assignment Table"

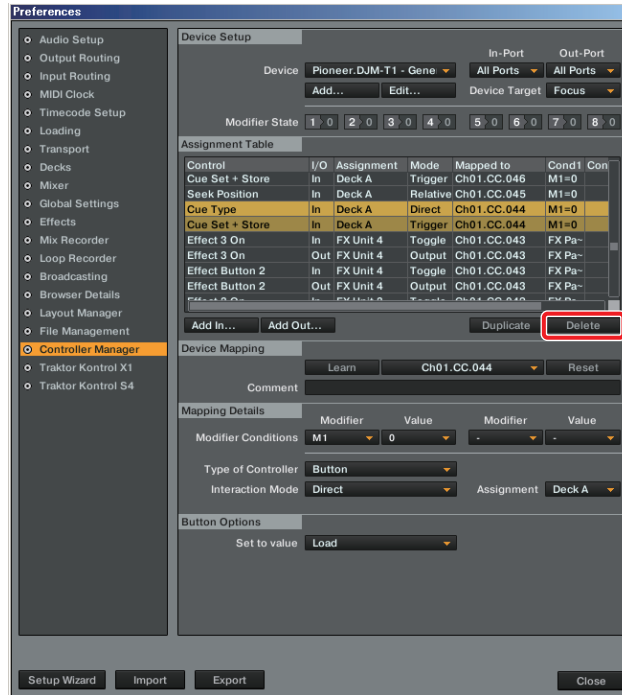
From the [Assignment Table], select the settings for [MIDI] and [TRAKTOR2 Control] assigned to the [Button/Knob]-[Function] you want to change.



6 Delete the settings defined in the Assignment Table.

Click [Delete] to delete the selected settings.

Delete all the settings assigned to the [Button/Knob]-[Function] you want to change.



7 Assign a new function to the Button/Knob.

Refer to [Preferences]-[Controller Manager] and [Assignable MIDI Controls] in the "TRAKTOR 2 Application Reference" manual that is found under Help menu of TRAKTOR 2 for further details of assigning functions.

Settings sample of DJM-T1 ADVANCED SHIFT

"APPENDIX - Function list of settings sample of DJM-T1 ADVANCED SHIFT"

Category	Button/Knob	Function	MIDI	TRAKTOR 2 Control	
Transport Section	Rotary Selector	Press	Maximize BROWSER Display	Note F#8	In Only Browser Toggle
		Turn	BROWSER LIST PAGE Scroll	CC 027	In List Select Up/Down
	DECK A LOAD (DUPLICATE) button		Select FAVORITE (BWD)	Note G8	In Favorite Select
	DECK B LOAD (DUPLICATE) button		Select FAVORITE (FWD)	Note G#8	In Favorite Select
	DECK A PLAY/PAUSE (REL.) button		Move playback position of DECK A to the beginning of the track	Note A8	In Seek Position
	DECK B PLAY/PAUSE (REL.) button		Move playback position of DECK B to the beginning of the track	Note A#8	In Seek Position
	DECK A SYNC (MASTER) button		DECK A MASTER TEMPO ON/OFF Switch	Note B8	In Key Lock
					Out Key Lock
	DECK B SYNC(MASTER) button		DECK B MASTER TEMPO ON/OFF Switch	Note C9	In Key Lock
					Out Key Lock
	DECK A FX ASSIGN FX1 button		DECK A FX3 ON/OFF Switch	Note C#9	In Effect Unit 3 On
					Out Effect Unit 3 On
	DECK B FX ASSIGN FX1 button		DECK B FX3 ON/OFF Switch	Note D9	In Effect Unit 3 On
					Out Effect Unit 3 On
	DECK A FX ASSIGN FX2 button		DECK A FX4 ON/OFF Switch	Note D#9	In Effect Unit 4 On
					Out Effect Unit 4 On
DECK B FX ASSIGN FX2 button		DECK B FX4 ON/OFF Switch	Note E9	In Effect Unit 4 On	
				Out Effect Unit 4 On	
DECK A CUE (ABS.) button		Set DECK A GRID CUE	Note F9	In Set Grid Marker	
DECK B CUE (ABS.) button		Set DECK B GRID CUE	Note F#9	In Set Grid Marker	

Category	Button/Knob		Function	MIDI	TRAKTOR 2 ∅ Control	
Effect Section	FX1 DRYWET Knob	SINGLE	FX3 DRYWET Control *1	CC 028	In	Dry/Wet Single
		GROUP			In	Dry/Wet Group
	FX2 DRYWET knob	SINGLE	FX4 DRYWET Control *1	CC 029	In	Dry/Wet Single
		GROUP			In	Dry/Wet Group
	FX1 ON (GROUP/SINGLE) button	SINGLE	FX3 ON/OFF Switch *1	CC 030	In	Effect On
		GROUP	-		Out	Effect On
	FX2 ON (GROUP/SNGLE) button	SINGLE	FX4 ON/OFF Switch *1	CC 031	In	Effect On
		GROUP	-		Out	Effect On
	FX1 EFFECT1 knob	SINGLE	FX3 PARAMETER 1 Control *1	CC 032	In	Effect Param 1
		GROUP			In	Effect 1 Amount
	FX2 EFFECT1 knob	SINGLE	FX4 PARAMETER 1 Control *1	CC 033	In	Effect Param 1
		GROUP			In	Effect 1 Amount
	FX1 EFFECT1 button	SINGLE	Reset FX3 PARAMETER *1	CC 034	In	Effect Param Reset
		GROUP	FX3 EFFECT 1 ON/OFF Switch *1		Out	Effect Param Reset
	FX2 EFFECT1 button	SINGLE	Reset FX4 PARAMETER *1	CC 035	In	Effect 1 On
		GROUP	FX4 EFFECT 1 ON/OFF Switch *1		Out	Effect 1 On

Category	Button/Knob		Function	MIDI	TRAKTOR 2 ∅ Control	
Effect Section	FX1 EFFECT2 knob	SINGLE	FX3 PARAMETER 2 Control *1	CC 036	In	Effect Param 2
		GROUP			In	Effect 2 Amount
	FX2 EFFECT2 knob	SINGLE	FX4 PARAMETER 2 Control *1	CC 037	In	Effect Param 2
		GROUP			In	Effect 2 Amount
	FX1 EFFECT2 button	SINGLE	FX3 PARAMETER 1 ON/OFF Switch *1	CC 038	In	Effect Button 1
		GROUP	FX3 EFFECT 2 ON/OFF Switch *1		Out	Effect Button 1
	In				Effect 2 On	
	Out	Effect 2 On				
	FX2 EFFECT2 button	SINGLE	FX4 PARAMETER 1 ON/OFF Switch *1	CC 039	In	Effect Button 1
		GROUP	FX4 EFFECT 2 ON/OFF Switch *1		Out	Effect Button 1
	In				Effect 2 On	
	Out	Effect 2 On				
	FX1 EFFECT3 knob	SINGLE	FX3 PARAMETER 3 Control *1	CC 040	In	Effect Param 3
		GROUP			In	Effect 3 Amount
	FX2 EFFECT3 knob	SINGLE	FX4 PARAMETER 3 Control *1	CC 041	In	Effect Param 3
		GROUP			In	Effect 3 Amount
	FX1 EFFECT3 button	SINGLE	FX3 PARAMETER 2 ON/OFF Switch *1	CC 042	In	Effect Button 2
		GROUP	FX3 EFFECT 3 ON/OFF Switch *1		Out	Effect Button 2
	In				Effect 3 On	
	Out	Effect 3 On				
	FX2 EFFECT3 button	SINGLE	FX4 PARAMETER 2 ON/OFF Switch *1	CC 043	In	Effect Button 2
		GROUP	FX4 EFFECT 3 ON/OFF Switch *1		Out	Effect Button 2
	In				Effect 3 On	
	Out	Effect 3 On				

Category	Button/Knob		Function	MIDI	TRAKTOR 2 ∅ Control		
Hot cue/ Sampler Section	DECK A AUTO LOOP (LOOP MOVE/SAMPLE VOLUME) knob	HOT CUE	Press	Set DECK A LOAD CUE	CC 044	In	Cue Type
			Turn	Move playback position of DECK A	CC 045	In	Seek Position
		SAMPLER	Press	Set DECK A LOAD CUE	CC 046	In	Cue Type
			Turn	Move playback position of DECK A	CC 025	In	Seek Position
		SAMPLER (While SLOT # on SAMPLE DECK C is selected)	Press	SAMPLE DECK C SLOT# VOLUME MAX *2	CC 046	In	Slot Volume
			Turn	SAMPLE DECK C SLOT # VOLUME Control *2	CC 025	In	Slot Volume
	DECK B AUTO LOOP (LOOP MOVE/SAMPLE VOLUME) knob	HOT CUE	Press	Set DECK B LOAD CUE	CC 047	In	Cue Type
			Turn	Move playback position of DECK B	CC 048	In	Seek Position
		SAMPLER	Press	Set DECK B LOAD CUE	CC 049	In	Cue Type
			Turn	Move playback position of DECK B	CC 026	In	Seek Position
		SAMPLER (While SLOT # on SAMPLE DECK D is selected)	Press	SAMPLE DECK D SLOT# VOLUME MAX *2	CC 049	In	Slot Volume
			Turn	SAMPLE DECK D SLOT# VOLUME Control *2	CC 026	In	Slot Volume
	DECK A HOT CUE1 button	HOT CUE	DECK A HOT CUE5 REC/PLAY	CC 052	In	Select/Set + Store Hot Cue	
		SAMPLER	While the button is pressed and held SAMPLE DECK C SLOT1 is selected *2	Note D3	In	Modifier #1	
	DECK B HOT CUE1 button	HOT CUE	DECK B HOT CUE5 REC/PLAY	CC 053	In	Select/Set + Store Hot Cue	
		SAMPLER	While the button is pressed and held SAMPLE DECK D SLOT1 is selected *2	Note D#3	In	Modifier #2	
	DECK A HOT CUE2 button	HOT CUE	DECK A HOT CUE6 REC/PLAY	CC 054	In	Select/Set + Store Hot Cue	
		SAMPLER	While the button is pressed and held SAMPLE DECK C SLOT2 is selected *2	Note E3	In	Modifier #1	
	DECK B HOT CUE2 button	HOT CUE	DECK B HOT CUE6 REC/PLAY	CC 055	In	Select/Set + Store Hot Cue	
		SAMPLER	While the button is pressed and held SAMPLE DECK D SLOT2 is selected *2	Note F3	In	Modifier #2	
						Out	Slot State

Category	Button/Knob		Function	MIDI	TRAKTOR 2 ∅ Control	
Hot cue/ Sampler Section	DECK A HOT CUE3 button	HOT CUE	DECK A HOT CUE7 REC/PLAY	CC 056	In	Select/Set + Store Hot Cue
					Out	Select/Set + Store Hot Cue
		SAMPLER	While the button is held, SAMPLE DECK C SLOT3 is selected *2	Note F#3	In	Modifier #1
					Out	Slot State
	DECK B HOT CUE3 button	HOT CUE	DECK B HOT CUE7 REC/PLAY	CC 057	In	Select/Set + Store Hot Cue
					Out	Select/Set + Store Hot Cue
		SAMPLER	While the button is pressed and held SAMPLE DECK D SLOT3 is selected *2	Note G3	In	Modifier #2
					Out	Slot State
	DECK A HOT CUE4 button	HOT CUE	DECK A HOT CUE8 REC/PLAY	CC 058	In	Select/Set + Store Hot Cue
					Out	Select/Set + Store Hot Cue
		SAMPLER	While the button is pressed and held SAMPLE DECK C SLOT4 is selected *2	Note G#3	In	Modifier #1
					Out	Slot State
	DECK B HOT CUE4 button	HOT CUE	DECK B HOT CUE8 REC/PLAY	CC 059	In	Select/Set + Store Hot Cue
					Out	Select/Set + Store Hot Cue
	SAMPLER	While the button is pressed and held SAMPLE DECK D SLOT4 is selected *2	Note A3	In	Modifier #2	
				Out	Slot State	
DECK A ACTIVE button	HOT CUE	Select DECK A ADVANCED PANEL *3	Note A#3	In	Show Advanced Panel	
				In	Select Advanced Panel	
				In	Modifier #3	
	SAMPLER (While SLOT # on SAMPLE DECK C is selected)	SAMPLE DECK C SLOT# PLAY MODE Switch *2	Note B3	In	Slot Play Mode	
DECK B ACTIVE button	HOT CUE	Select DECK B ADVANCED PANEL *3	Note C4	In	Show Advanced Panel	
				In	Select Advanced Panel	
				In	Modifier #4	
	SAMPLER (While SLOT # on SAMPLE DECK D is selected)	SAMPLE DECK D SLOT# PLAY MODE Switch *2	Note C#4	In	Slot Play Mode	
Mixer Section	CH1 CUE (TAP) button		WAVE FORM Zoom Out	Note D4	In	Deck Zoom
	CH2 CUE (TAP) button		WAVE FORM Zoom In	Note D#4	In	Deck Zoom
Global Section	SNAP (QUANTIZE) button		REC START/STOP	Note G9	In	Audio Recorder On
					Out	Audio Recorder On

*1 Functions with this remark only work when upgraded to TRAKTOR SCRATCH PRO 2.
When using TRAKTOR SCRATCH DUO 2, the functions do not work properly.
Effect mode (SINGLE/ GROUP) can be switched by setting in Preferences > Effects > FX Panel Mode of TRAKTOR 2.

*2 The following functions are available when SAMPLE SLOT numbers of the relevant Decks are selected.

SAMPLE DECK C(D) SLOT# VOLUME MAX

SAMPLE DECK C(D) SLOT# VOLUME CONTROL

SAMPLE DECK C(D) SLOT# PLAY MODE SWITCH

Press and hold the SAMPLE SLOT number while being in ADVANCED SHIFT mode; then, use the button or the knob of the function selected from the above three. Press and hold the SAMPLE SLOT number while using ADVANCED SHIFT functions.
The procedures for using the functions associated with SAMPLE SLOT numbers are as follows:

Example: When you want to call out SAMPLE DECK C SLOT# VOLUME Control:

- ① Press the [SELECT] button on DECK C to switch to Sampler function.
- ② Press the [SHIFT] button twice consecutively and you will see the [SHIFT] button light.
- ③ Press and hold [SHIFT] button. You will see the [SHIFT] button flashing, and now you are in ADVANCED SHIFT mode.
While the [SHIFT] button is held, you stay in ADVANCED SHIFT mode.
- ④ While continuing the above (3), press and hold the [HOT CUE/SAMPLER] button associated with the SAMPLE SLOT number you want to select. Now, the SAMPLE SLOT is selected.
- ⑤ While continuing the above (4), turn [AUTO LOOP] knob to call out SAMPLE DECK C SLOT# VOLUME CONTROL to control volume of the selected SAMPLE SLOT.

*3 If you upgrade to TRAKTOR SCRATCH PRO 2, select "Advanced" in Preferences > Decks > Deck Layout > Size A & B.

- TRAKTOR is the registered trademark of Native Instruments GmbH.
- Windows®, Windows 7, Windows Vista® and Windows XP are the registered trademarks and trademarks of Microsoft Corporation registered in the United States of America and other countries.
- Mac OS is the trademark of Apple Inc. registered in the United States of America and other countries.

© 2011 PIONEER CORPORATION.
All rights reserved.

PIONEER CORPORATION

1-1, Shin-ogura, Saiwai-ku, Kawasaki-shi, Kanagawa 212-0031, Japan

PIONEER ELECTRONICS (USA) INC.

P.O. BOX 1540, Long Beach, California 90801-1540, U.S.A. TEL: (800) 421-1404

PIONEER ELECTRONICS OF CANADA, INC.

340 Ferrier Street, Unit 2, Markham, Ontario L3R 2Z5, Canada TEL: 1-877-283-5901, 905-479-4411

PIONEER EUROPE NV

Haven 1087, Keetberglaan 1, B-9120 Melsele, Belgium TEL: 03/570.05.11

PIONEER ELECTRONICS ASIACENTRE PTE. LTD.

253 Alexandra Road, #04-01, Singapore 159936 TEL: 65-6472-7555

PIONEER ELECTRONICS AUSTRALIA PTY. LTD.

5 Arco Lane, Heatherton, Victoria, 3202, Australia, TEL: (03) 9586-6300

PIONEER ELECTRONICS DE MEXICO S.A. DE C.V.

Blvd.Manuel Avila Camacho 138 10 piso Col.Lomas de Chapultepec, Mexico, D.F. 11000 TEL: 55-9178-4270

<DRI1028-B>

Free Manuals Download Website

<http://myh66.com>

<http://usermanuals.us>

<http://www.somanuals.com>

<http://www.4manuals.cc>

<http://www.manual-lib.com>

<http://www.404manual.com>

<http://www.luxmanual.com>

<http://aubethermostatmanual.com>

Golf course search by state

<http://golfingnear.com>

Email search by domain

<http://emailbydomain.com>

Auto manuals search

<http://auto.somanuals.com>

TV manuals search

<http://tv.somanuals.com>