

Pioneer

DJ Controller

DDJ-ERGO

**“TRAKTOR PRO 2”
Setting File Import Guide**

Before Start

Pioneer provides a settings file exclusively for use with the Native Instruments "TRAKTOR PRO 2" DJ software. TRAKTOR PRO 2 can be controlled from this unit by importing this file.

- A computer on which TRAKTOR PRO 2 is installed is required.
- Please refer to the separately provided ["TRAKTOR PRO 2" Setup Guide] to set up "TRAKTOR PRO 2" in advance.
- With this settings file, DECK A/B will not be able to use as Remix DECK.
- Not all functions in TRAKTOR PRO 2 are supported. Users should make their own settings as necessary.
- To make additional settings, see "Traktor 2 Application Reference", the TRAKTOR 2 operating manual (PDF file) included with TRAKTOR PRO 2.
- To operate TRAKTOR PRO 2 using this unit's buttons, see the separate "Hardware Diagram for TRAKTOR PRO 2" (PDF file) table of supported functions.

General Disclaimer

- Pioneer will accept no responsibility whatsoever for damages resulting from downloading or installing this settings file. Operation of this settings file is not guaranteed.
- Users should take full responsibility for downloading, installing and using this settings file.
- The specifications of this settings file are subject to change without notice.
- Please note that services regarding this settings file may be terminated without notice.

Customers who uses DDJ-ERGO LIMITED

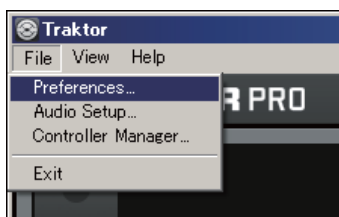
· Some of the functions listed on the [Operating Instructions] of DDJ-ERGO-K are not available in TRAKTOR PRO 2.6. Please refer to the Hardware Diagram for TRAKTOR PRO 2.6.

Backing up the current settings file

We recommend backing up using the procedure below so that the current settings can be restored if necessary.

- This operation is not necessary for those using TRAKTOR PRO 2 for the first time.

1 Select [File] > [Preferences...].

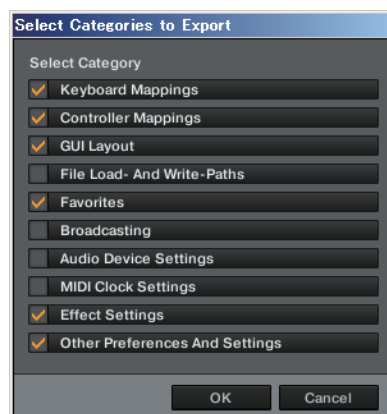


2 Open the [Preferences] window, click [Export].



3 Check the items to be backed up, then click [OK].

Give the file an easily identifiable name (e.g.: BackUp.tsi) and save it in the desired location.



Importing a settings file

Cautions

- Please refer to the separately provided ["TRAKTOR PRO 2" Setup Guide] to set up "TRAKTOR PRO 2" in advance.
- When another settings file has been imported, this procedure may not operate properly. In this case, delete the imported settings file before performing this operation. For details, see *Deleting the settings file* on page 3.

1 Access the Pioneer support web site

(<http://www.prodjnet.com/support/>), move from the top page to the download page, then download the settings file from the DDJ-ERGO page.

The downloaded file is compressed in ZIP format. Unzip it before starting.

– For Windows users

Right-click the downloaded file and select [Extract All]. The unzip wizard appears. Specify the folder in which the file is to be unzipped and unzip(decompress) it.

– For Mac OS X users

Double-click the downloaded ZIP file to unzip it. When unzipped, a file named [PIONEER_DDJ-ERGO_Vxxx.tsi] is extracted.

· Depending on the browser you are using, the file may be unzipped automatically.

In this case, this unzipping procedure is not necessary.

2 Save the [PIONEER_DDJ-ERGO_Vxxx.tsi] file downloaded in step 1 in the desired location.

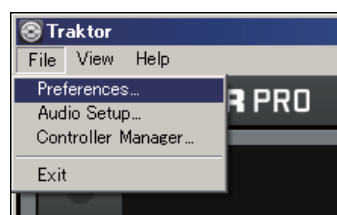
Example

- For Windows
My Documents\Native Instruments\Traktor 2.x.x\Settings
- For Mac OS X
~/Documents/Native Instruments/Traktor 2.x.x/Settings

3 Connect the DDJ-ERGO and computer using the USB cable, then turn on the DDJ-ERGO's power.

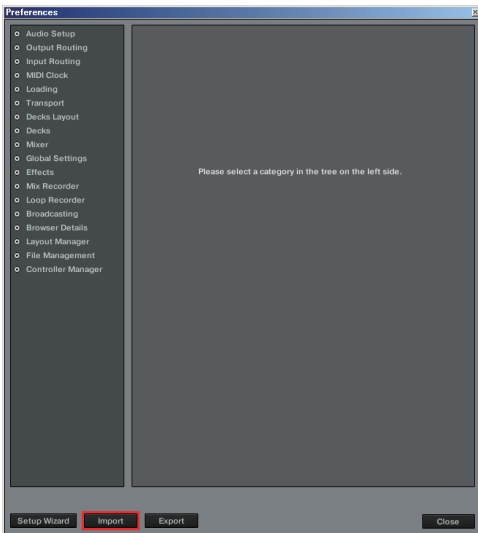
4 Launch TRAKTOR PRO 2.

5 Select [File] > [Preferences...]

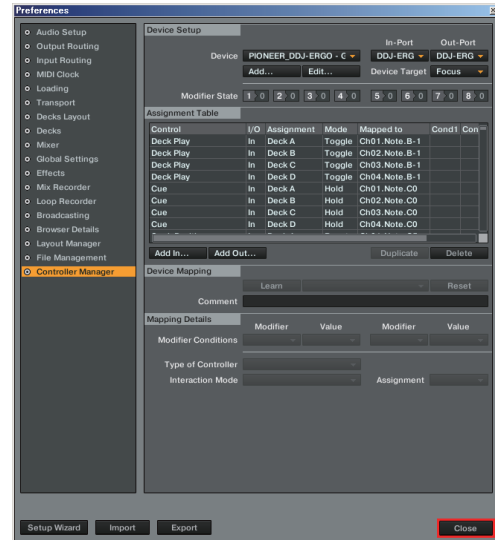


6 Click [Import] on the [Preferences] window.

Select the [PIONEER_DDJ-ERGO_Vxxx.tsj] file saved in step 2.

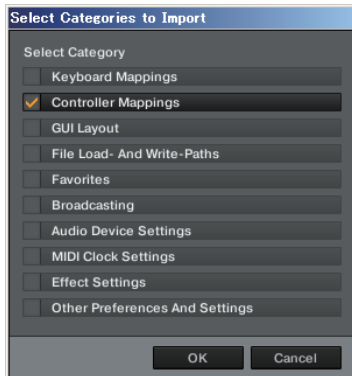


9 Click [Close].

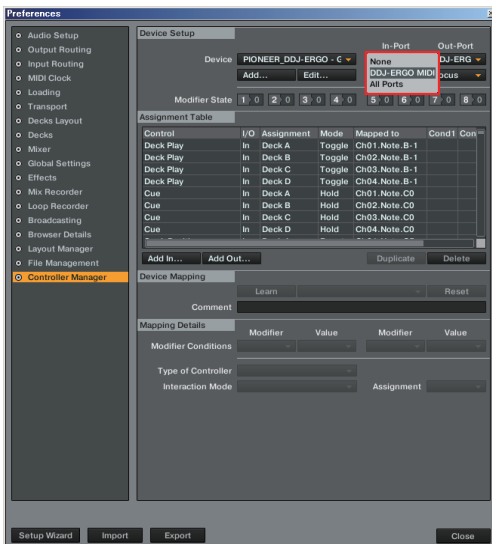


This completes importing of the settings file.

7 Click [OK] to load the MIDI mappings.



8 Open [Controller Manager], select [PIONEER_DDJ-ERGO] at [Device], then set the device corresponding to the DDJ-ERGO at [In-Port] and [Out-Port].

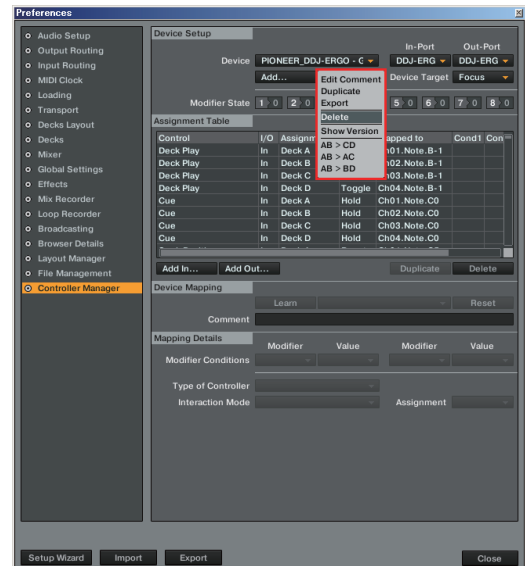


Deleting the settings file

1 Select [File] > [Controller Manager]



2 From the [Preferences] window, select the device to be deleted from [Device], then execute the [Delete] command from the [Edit...].



About trademarks and registered trademarks

- Pioneer is a registered trademark of PIONEER CORPORATION.
- TRAKTOR is a registered trademark of Native Instruments.
- Microsoft®, Windows Vista®, Windows® and Internet Explorer® are either registered trademarks or trademarks of Microsoft Corporation in the United States and/or other countries.
- Apple, Macintosh, Mac OS, Safari, iTunes, and Finder are trademarks of Apple Inc., registered in the U.S. and other countries.

© 2011-2013 PIONEER CORPORATION.

All rights reserved.

PIONEER CORPORATION

1-1, Shin-ogura, Saiwai-ku, Kawasaki-shi, Kanagawa 212-0031, Japan

- When using Windows, to use the DDJ-ERGO's exclusive audio driver, open [Audio Setup] and set [Audio Device] to [Pioneer DDJ ASIO].

Free Manuals Download Website

<http://myh66.com>

<http://usermanuals.us>

<http://www.somanuals.com>

<http://www.4manuals.cc>

<http://www.manual-lib.com>

<http://www.404manual.com>

<http://www.luxmanual.com>

<http://aubethermostatmanual.com>

Golf course search by state

<http://golfingnear.com>

Email search by domain

<http://emailbydomain.com>

Auto manuals search

<http://auto.somanuals.com>

TV manuals search

<http://tv.somanuals.com>