

**Pioneer** *sound.vision.soul*

**DataMan2**  
version 1.05

**A Serial Communication Tool for the Pioneer  
Industrial DVD Video Player  
DVD-V7400**

**Microsoft® Windows® Compatible**

August 1, 2002  
**Document Version 1.01**

Pioneer Electronics (USA), Inc.  
Business Solutions Division

This manual is copyrighted with all rights reserved. No part of this document may be reprinted, produced, translated or utilized in any form or by any means now known or hereafter invented including, but not limited to, any electronic, mechanical, photocopying and recording or information storage and retrieval system means, without the express written permission from Pioneer Electronics (USA), Inc.

Every effort has been made to ensure that the information in this manual is accurate. Pioneer is not responsible for printing or clerical errors.

Information in this document is subject to change without notice.

Copyright (c) 2002 Pioneer Electronics (USA), Inc.

Printed in the United States of America.

Mention of third-party products is for informational purposes only and contributes neither an endorsement nor a recommendation. Pioneer assumes no responsibility with regard to the performance or use of these products.

No investigation has been made of common-law trademark rights in any word. Words that are known to have current registrations are shown with an initial capital. Many, if not all, hardware and/or software products referenced in this manual are identified by their trade names. Most, if not all, of these designations are claimed a legally protected trademarks by the companies that make the product. It is not Pioneer's intent to use any of these names generically and cautions the reader to investigate any claimed trademark before using it for any purpose other than to refer to the product to which the trademark is attached.

Pioneer makes no warranty of any kind, expressed or implied, about the contents of this manual, the merchantability of the product or the product's fitness for any particular purpose.

Every precaution has been taken in the preparation of this manual. Although we tried to thoroughly check that all instructions and information in this manual are accurate and correct, Pioneer can not be and is not responsible, in whole or in part, for any damage or loss to your data and/or equipment that results from your use of this document or from any information contained herein including, but not limited to, any errors, omissions or typos that may have resulted in an incorrect operation or installation.

## Table of Contents

<b>1.0</b>	<b>INTRODUCTION .....</b>	<b>1</b>
<b>2.0</b>	<b>INSTALLATION .....</b>	<b>2</b>
<b>2.1</b>	<b>Program Installation .....</b>	<b>2</b>
<b>2.2</b>	<b>Communication Settings .....</b>	<b>3</b>
<b>2.2.1</b>	<b>Auto Connect Option.....</b>	<b>3</b>
<b>2.2.2</b>	<b>Manual Connect Option.....</b>	<b>4</b>
<b>2.2.3</b>	<b>Disconnect Option.....</b>	<b>4</b>
<b>3.0</b>	<b>DATA MANAGEMENT.....</b>	<b>5</b>
<b>3.1</b>	<b>Weekly Timer Transmissions .....</b>	<b>5</b>
<b>3.1.1</b>	<b>Weekly Timer Data Download.....</b>	<b>6</b>
<b>3.1.1.1</b>	<b>Display / Edit Download .....</b>	<b>6</b>
<b>3.1.1.2</b>	<b>Download – Save As.....</b>	<b>7</b>
<b>3.1.1.3</b>	<b>Download to Player.....</b>	<b>8</b>
<b>3.1.2</b>	<b>Weekly Timer Data Upload.....</b>	<b>8</b>
<b>3.1.2.1</b>	<b>Display/Edit Upload.....</b>	<b>9</b>
<b>3.1.2.2</b>	<b>Upload – Save As .....</b>	<b>10</b>
<b>3.1.3</b>	<b>Create New Data.....</b>	<b>10</b>
<b>3.2</b>	<b>Command Stack / Blackboard Data Transmissions .....</b>	<b>11</b>
<b>3.2.1</b>	<b>Barcode Command Stack / Blackboard Download.....</b>	<b>12</b>
<b>3.2.2</b>	<b>Barcode Command Stack / Blackboard Upload.....</b>	<b>17</b>
<b>3.2.3</b>	<b>Create New Command Stack Data .....</b>	<b>21</b>
<b>3.3</b>	<b>Memory Data Management .....</b>	<b>26</b>
<b>3.3.1</b>	<b>Memory Data Download .....</b>	<b>27</b>
<b>3.3.2</b>	<b>Memory Data Upload .....</b>	<b>28</b>
<b>4.0</b>	<b>CLOCK ADJUSTMENTS .....</b>	<b>29</b>
<b>5.0</b>	<b>COMMAND-SEND-MONITOR FOR TESTING COMMANDS .....</b>	<b>30</b>
<b>5.1</b>	<b>Command File .....</b>	<b>31</b>
<b>5.2</b>	<b>Command List.....</b>	<b>31</b>
<b>5.3</b>	<b>Command Action .....</b>	<b>33</b>
<b>6.0</b>	<b>ADDITIONAL INFORMATION .....</b>	<b>34</b>
<b>6.1</b>	<b>Program Files.....</b>	<b>34</b>
<b>6.2</b>	<b>Help List.....</b>	<b>34</b>

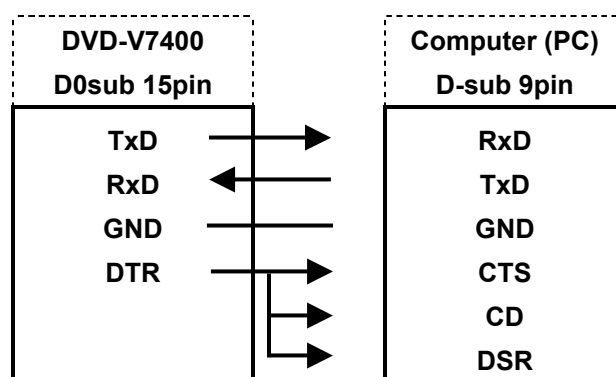
## 1.0 INTRODUCTION

DataMan2 is an application that allows the user to download, upload, create and edit all memory data from the DVD-V7400 through an easy-to-use graphical interface. The program provides serial (RS-232C) communication between a computer and a Pioneer DVD player. Serial commands include the following functions:

- Operation Commands
- Command Stacks
- Barcode Support
- Video Blackboard Operations
- Upload Files
- Download Files
- Clock/Timer Settings
- Memory Data Upload/Display

The software program requires the following hardware:

- Microsoft® Windows® Operating System of Windows98® or later
- Computer with a standard RS-232 serial port available
- Serial cable: D-sub 9pin to 15pin



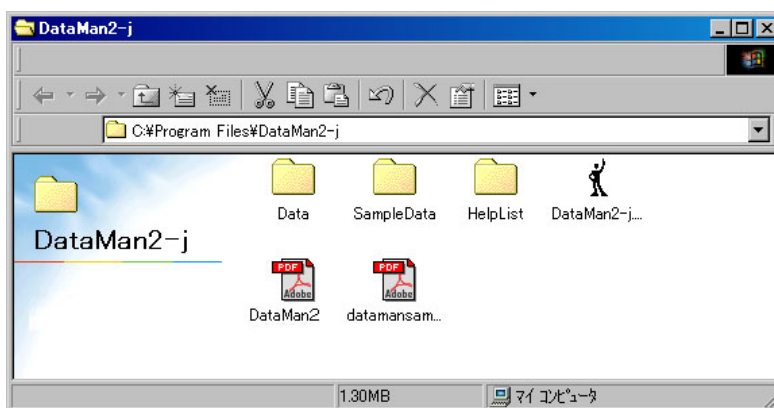
## 2.0 INSTALLATION

DataMan2 consists of a self-extracting program, **DataMan2-74.exe**, an electronic copy of the operating instructions and a folder with sample data. Before installing DataMan2, verify that all components are properly connected and that there is sufficient room on the PC's hard disc for the program and command files. The program requires approximately 1.5 MBs for initial installation.

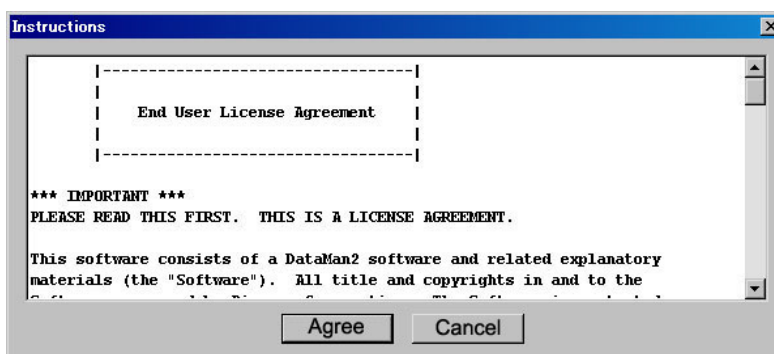
### 2.1 Program Installation

After downloading the program to your PC, follow the directions below to install the application.

1. Access the drive with Microsoft Windows Explorer.



2. Double-click on the **DataMan2-74.exe** file to launch DataMan2.
3. Review the End User License Agreement that appears on screen.



4. Click on **Agree** if you wish to access the DataMan2 program.

*Note: Each time DataMan2 is launched, the End User License Agreement appears before the application opens. Click on Agree to access the program.*

The DataMan2 main menu includes the following buttons and settings:

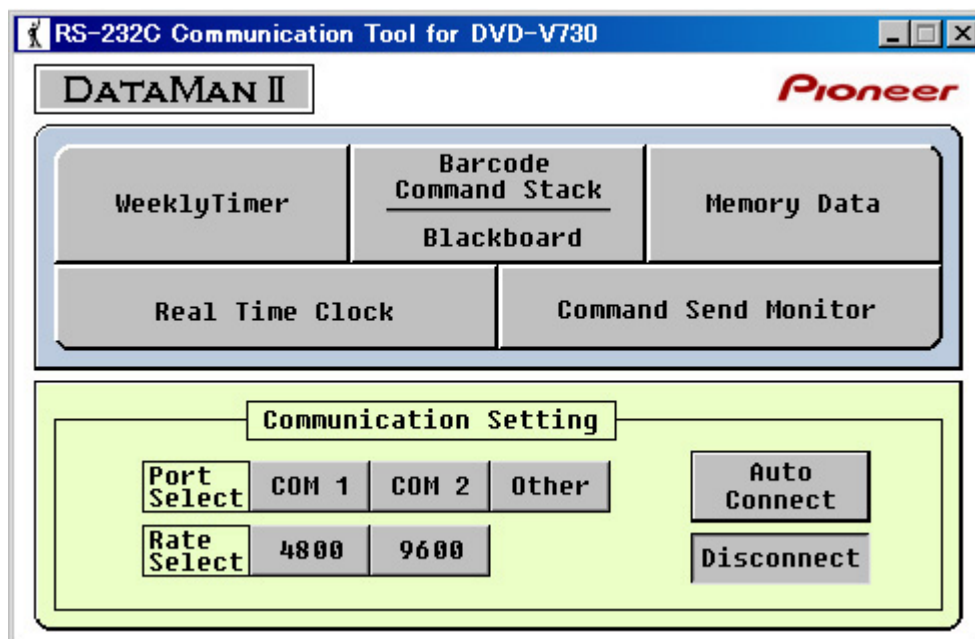
**Command Buttons:**

- Weekly Timer
- Barcode Command Stack/Blackboard
- Memory Data
- Real Time Clock
- Command Send Monitor

**Communication Settings:**

- Port Select – Com 1/Com 2/Other
- Rate Select – 4800/9600
- Auto Connect
- Disconnect

**DataMan2 Main Menu**

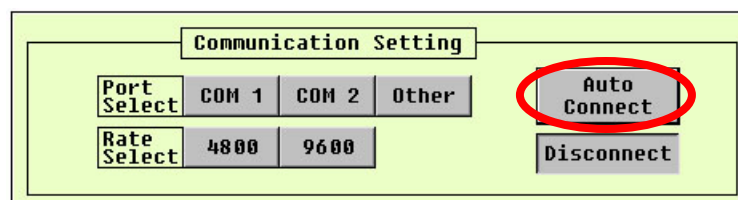


## 2.2 Communication Settings

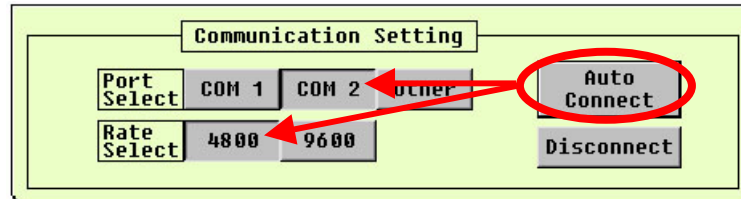
The communication settings must be established before working with functions and sending commands using DataMan2. There are three connection methods, Auto-Connect, manual connection, and Disconnect.

### 2.2.1 Auto Connect Option

To automatically set the communications, click on the Auto Connect button on the right side of the Communications Setting box.



By pressing the Auto Connect button, the computer detects the DVD player and auto-sets the port and rate selections. The connections are confirmed when the selections are revealed in the Communication Setting box. The example below shows the port as Com 2 with a signal rate of 4800 bps as the detected communication settings.



### 2.2.2 Manual Connect Option

Follow the instructions below to manually set the communication connections.

1. Launch the DataMan2 program.  
*Click on Accept for the End User License Agreement to continue.*
2. Click on a port option.
3. Click on a rate option.
4. Click on the Auto Connect button to initiate the communication settings.

### 2.2.3 Disconnect Option

If the DVD player is removed or exchanged with another unit, click on the Disconnect button before moving the current player.

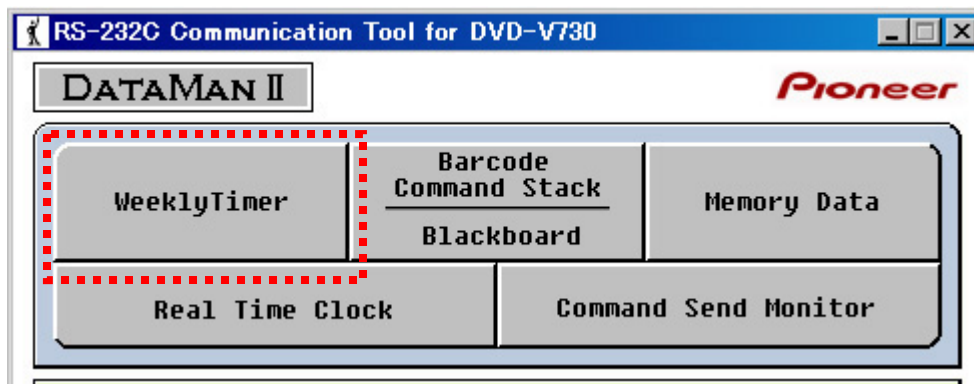
## 3.0 DATA MANAGEMENT

DataMan2 allows management of the following types of data:

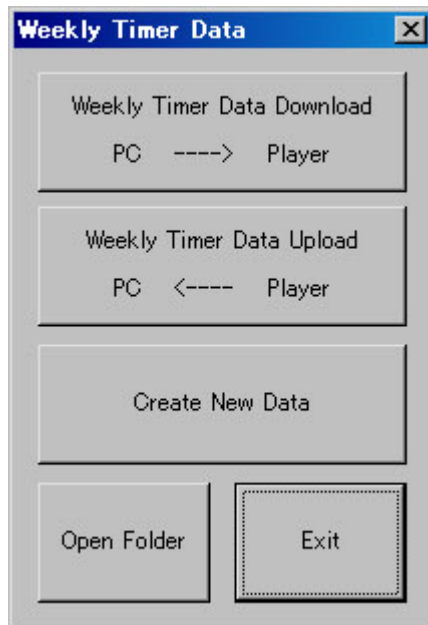
- Weekly Timer
- Command Stack & Blackboard
- Memory (all data within the player's memory)

### 3.1 Weekly Timer Transmissions

The Weekly Timer button on the main menu provides a series of commands involving data loading.



The data transmissions are as follows:

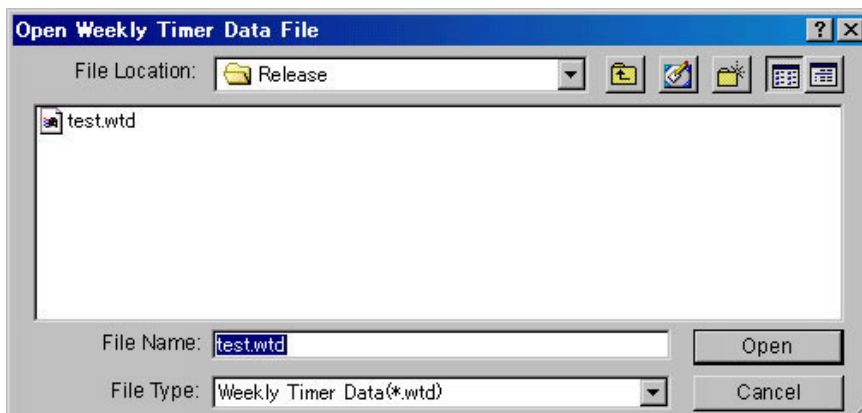


- ◆ **Weekly Timer Data Download** – computer (PC) sends data to the DVD player
- ◆ **Weekly Timer Data Upload** – DVD player sends data to the PC
- ◆ **Create New Data** – add timer information and/or settings to the system
- ◆ **Open Folder** – opens last file folder accessed
- ◆ **Exit** – close the program

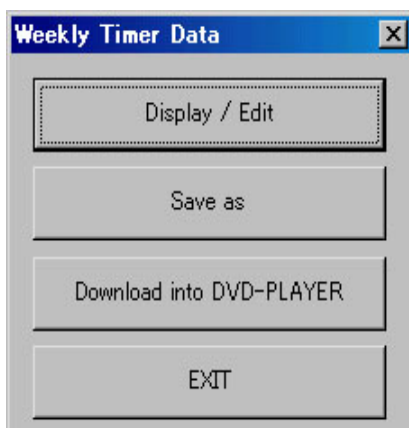


## 3.1.1 Weekly Timer Data Download

Selecting **Weekly Timer Data Download** causes a file locator window to appear.



Select the weekly timer data (.wtd) file from the appropriate directory. Once a file is selected, a pop-up menu appears.



- ◆ **Display / Edit** – show or change the weekly timer data
- ◆ **Save As** – saves the weekly timer settings for future use
- ◆ **Download into DVD-PLAYER** – sends a settings file from the PC to the player
- ◆ **Exit** – closes the pop-up menu

The menu options, *Display/Edit*, *Save As*, and *Download into DVD-PLAYER*, are detailed in the following sections.

### 3.1.1.1 Display / Edit Download

The *Display/Edit* option on the pop-up menu allows any field on the Weekly Timer Data property sheet to be viewed/alterd. The following fields are available for edits:

- Day – day of the week or a series of days
- On – activation time based on a 24-hour clock
- Off – deactivation time based on a 24-hour clock
- Mode – required action or activity such as a Chapter Search
- TitleChapter/Group – named recorded location on the disc

Day	On	Off	Mode	TitleChapter/Group
Monday	1330	1500	Ttl Chpt Search	Title0001Chap0002
Monday	1505	1730	Ttl Chpt Search	Title0002Chap0001
Monday	FFFF	2130	----	----
Thursday	FFFF	FFFF	----	----
Friday	FFFF	FFFF	----	----
Saturday	FFFF	FFFF	----	----
Sunday	FFFF	FFFF	----	----
Allday	FFFF	FFFF	----	----

To change a field on the property sheet, use the drop-down selector where available. For fields without a drop-down selector, highlight the field information and type in the data. Click on the **Apply** button when all additions and/or edits are complete. The edited file is then stored in the DVD player's memory.

The tabbed pages refer to events. The system supports up to three events per day.

Pressing **Exit** after making changes returns the file to the original settings and closes the property sheet window.

*Note: The Timer is based on a 24-hour clock.*

### 3.1.1.2 Download – Save As

To copy an edited file to the PC after creating the property sheet and pressing the Apply button, click on the Save As button from the pop-up menu. Follow the directions below to save the changed property sheet to the PC.

1. Create a new or edit an existing property sheet.
2. Click on the **Apply** button at the bottom of the property sheet.  
*You are automatically returned to the pop-up menu.*
3. Click on the **Save As** button on the pop-up menu.
4. Open the appropriate directory.
5. Create a weekly timer data (.wtd) file name.  
*Other file extensions are BCD for command stack/blackboard data and MMD for Memory Data. These extensions are explained in later sections of this manual.*
6. Click on **Save** to copy the Weekly Timer Data file to the PC.

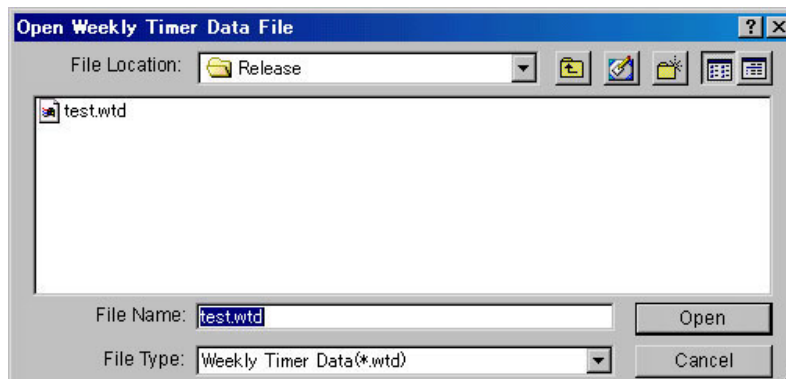
*Note: The asterisk in the title bar indicates that the file has been modified or uploaded. You must save the file to retain the data.*



### 3.1.1.3 Download to Player

Often a particular weekly timer program is appropriate in multiple situations. If the weekly timer data is saved on a PC, the timer information can be downloaded to the DVD player again or to other DVD players in the future. Follow the directions below to download a weekly timer data file to the DVD player.

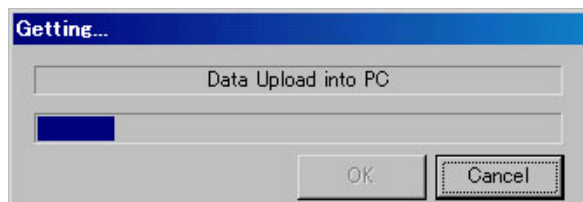
1. Click on the **Weekly Timer Data Download** button from the Weekly Timer Data menu.
2. Click on the **Download into DVD-PLAYER** button from the pop-up menu.
3. Select the weekly timer data (.wtd) file from the appropriate directory.



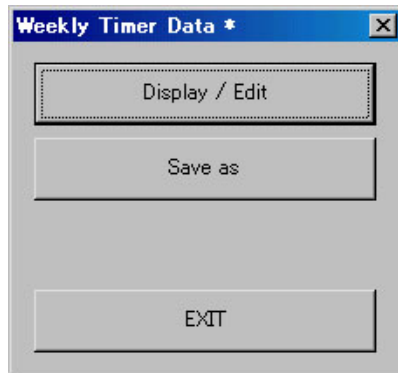
4. Click on **Open** to select the highlighted file and download the data to the player.

### 3.1.2 Weekly Timer Data Upload

Selecting **Weekly Timer Data Upload** causes an upload status bar to appear. The bar increases as the data is uploaded from the DVD player to the PC.



Once the data is successfully captured, press the **OK** button to accept the upload. The following pop-up menu appears on screen:

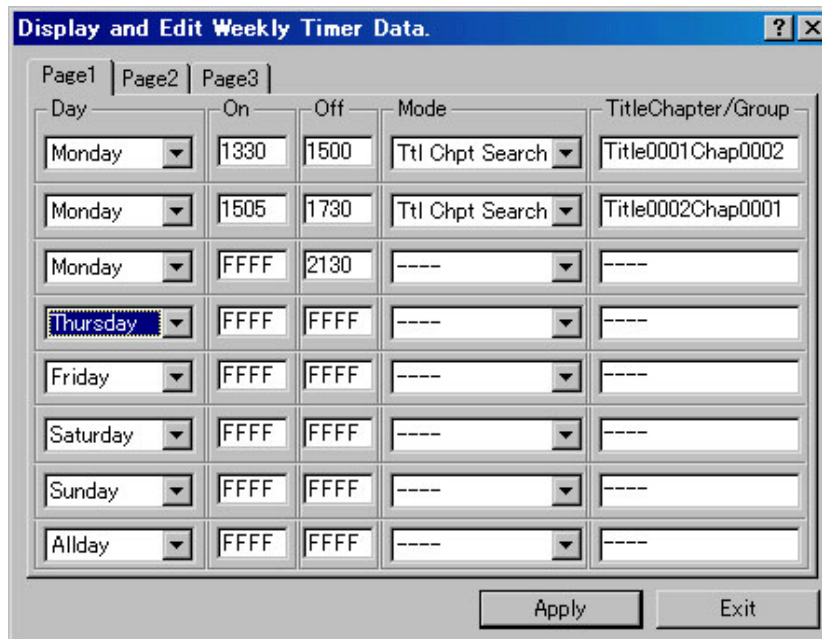


- ◆ **Display / Edit** – show or change the weekly timer data
- ◆ **Save As** – saves the weekly timer settings for future use
- ◆ **Exit** – closes the pop-up menu

### 3.1.2.1 Display/Edit Upload

The *Display/Edit* option on the pop-up menu allows any field on the Weekly Timer Data property sheet to be viewed/alterred. The following fields are available for edits:

- Day – day of the week or a series of days
- On – activation time based on a 24-hour clock
- Off – deactivation time based on a 24-hour clock
- Mode – required action or activity such as a Chapter Search
- TitleChapter/Group – named recorded location on the disc



*Note: The pages refer to events. The system supports up to three events per day.*

To change a field on the property sheet, use the drop-down selector where available. For fields without a drop-down selector, highlight the field information and type in the

data. Click on the **Apply** button when all additions and/or edits are complete. The edited file is then stored in the DVD player's memory.

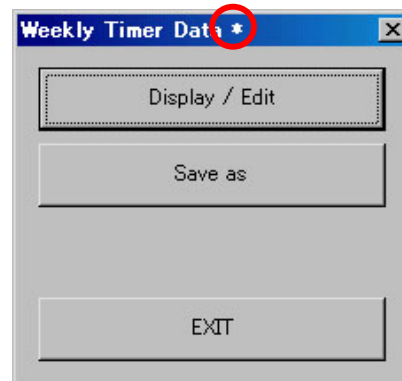
Pressing **Exit** after making changes returns the file to the original settings and closes the property sheet window.

### 3.1.2.2 Upload – Save As

To copy an edited file to the PC after creating the property sheet and pressing the Apply button, click on the Save As button from the pop-up menu. Follow the directions below to save the changed property sheet to the PC.

1. Create a new or edit an existing property sheet.
2. Click on the **Apply** button at the bottom of the property sheet.  
*You are automatically returned to the pop-up menu.*
3. Click on the **Save As** button on the pop-up menu.
4. Create a weekly timer data (.wtd) file name.  
*Other file extensions are BCD for command stack/blackboard data and MMD for Memory Data. These extensions are explained later in this manual.*
5. Open the appropriate directory.
6. Click on **Save** to copy the Weekly Timer Data file to the PC.

*Note: The asterisk in the title bar indicates that the file has been modified or uploaded. You must save the file to retain the data.*



### 3.1.3 Create New Data

To build a new Weekly Timer Data file, click on the Create New Data button from the pop-up menu. Activating this button calls an empty property sheet to the screen. A property sheet consists of the following fields:

- Day – day of the week or a series of days
- On – activation time based on a 24-hour clock
- Off – deactivation time based on a 24-hour clock
- Mode – required action or activity such as a Chapter Search
- TitleChapter/Group – named recorded location on the disc

Day	On	Off	Mode	TitleChapter/Group
Monday	1330	1500	Ttl Chpt Search	Title0001Chap0002
Monday	1505	1730	Ttl Chpt Search	Title0002Chap0001
Monday	FFFF	2130	----	----
Thursday	FFFF	FFFF	----	----
Friday	FFFF	FFFF	----	----
Saturday	FFFF	FFFF	----	----
Sunday	FFFF	FFFF	----	----
Allday	FFFF	FFFF	----	----

*Note: The pages refer to events. The system supports up to three events per day.*

Follow the directions below to create a new Weekly Timer Data file.

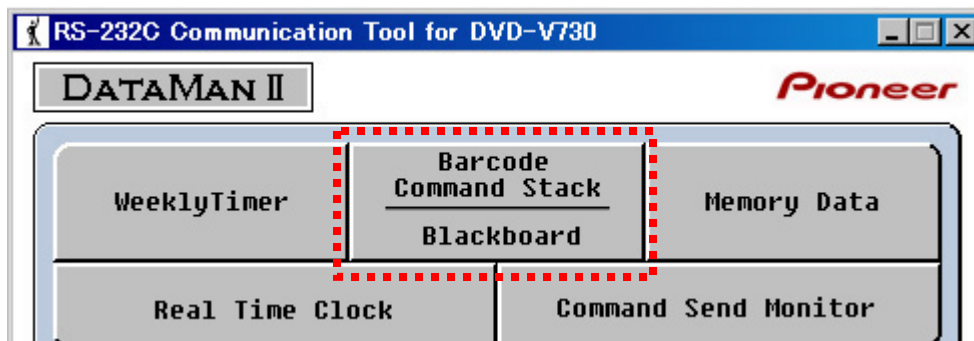
1. Click on the **Create New Data** button from the pop-up menu.
2. Add information to the property sheet.  
*Use the drop-down selector where available. For fields without a drop-down selector, highlight the field information and type in the data.*
3. Click on the **Apply** button on the property sheet.  
*The data is stored in the DVD player's memory.*
4. Click on the **Save As** button from the pop-up menu.
5. Add the *wtd* file to the appropriate directory.

### 3.2 Command Stack / Blackboard Data Transmissions

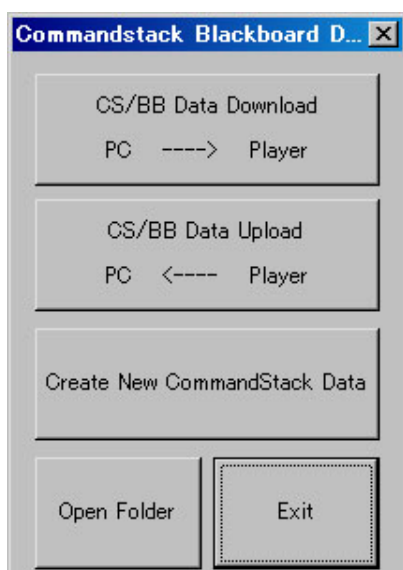
The Barcode Command Stack/Blackboard feature supports downloading and uploading data between the PC and the DVD player. Unlike the Weekly Timer function, the Barcode Command Stack (CS) and the Blackboard (BB) have multiple submenus to activate a range of settings. Refer to the following sections in this manual for details on these submenus.

The CS/BB data consists of text items only; graphics must be entered using traditional methods. This text data is available for uploading and downloading rather than editing specific entries. If text is incorrect or incomplete, delete the entry then type in the text again.

From the DataMan2 main menu, select the Barcode Command Stack / Blackboard button.



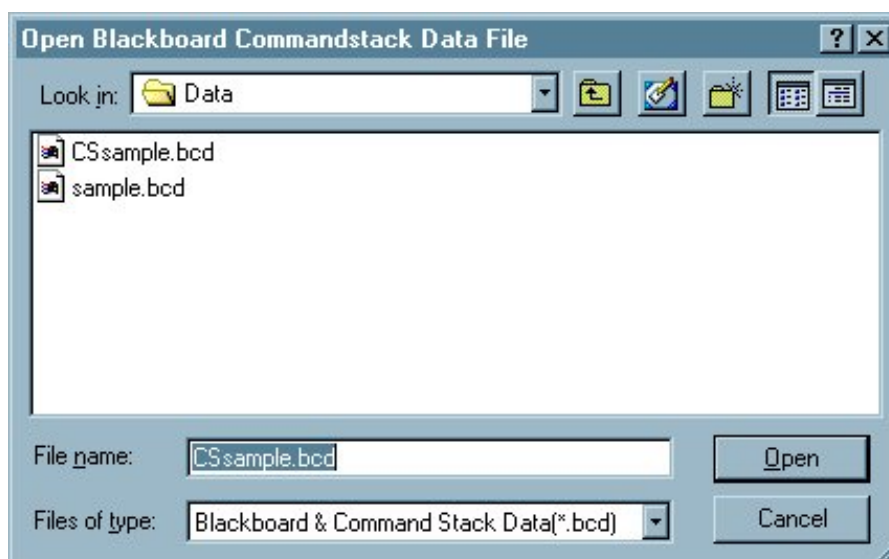
The data transmissions are as follows:



- ◆ **CS/BB Data Download** – computer (PC) sends data to the DVD player
- ◆ **CS/BB Data Upload** – DVD player sends data to the PC
- ◆ **Create New CommandStack Data** – add a new Barcode Command Stack to the system
- ◆ **Open Folder** – opens last file folder accessed
- ◆ **Exit** – close the program

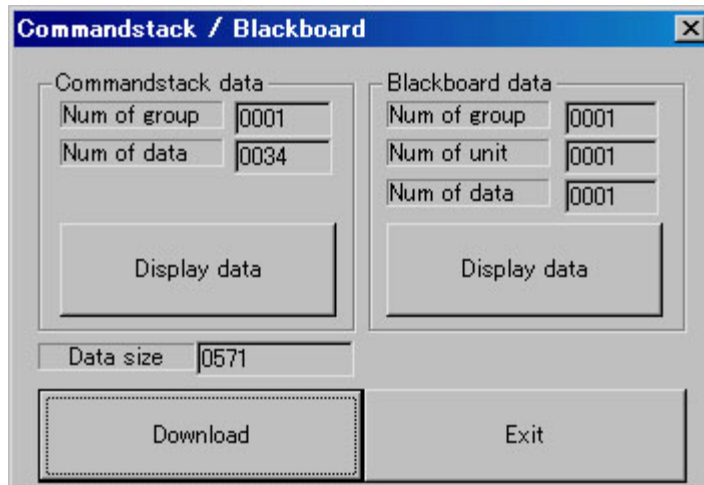
### 3.2.1 Barcode Command Stack / Blackboard Download

Select the file for download before continuing.





To download data from the computer (PC) to the DVD player, press the CS/BB Data Download button to begin the process. The following pop-up window appears with the current settings.



### Comandstack

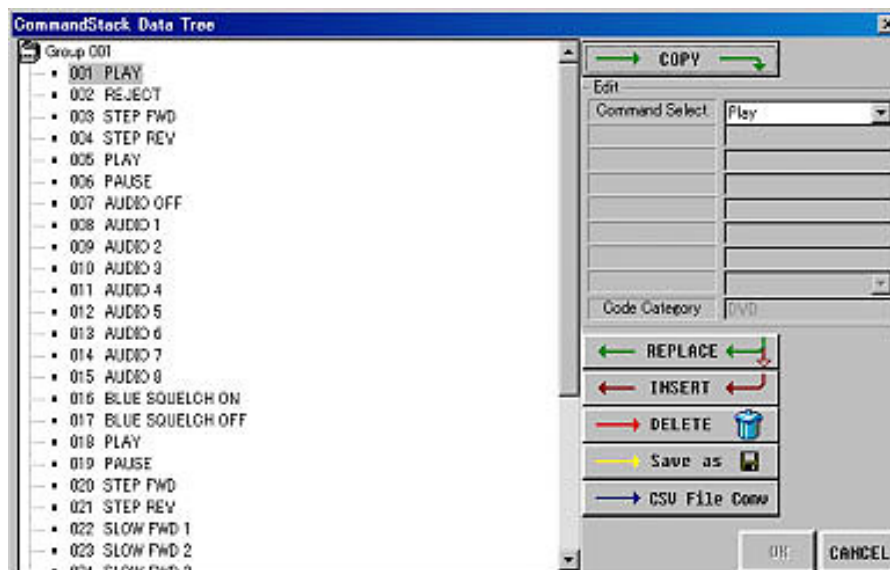
The Command Stack Data settings are as follows:

- Num of group – Total number of Barcode command stacks  
*If no data is present, the number remains as '1'.*
- Num of data – the number of commands in that stack/group

Pressing the Command stack's **Display data** button (column on left) causes the CS data details window to open. This dialog box is discussed later in this chapter.

Other information pertaining to the Command Stack includes the size of the selected data (Data size). This monitoring field assists the user to not exceed the available space on the PC's hard drive or in the DVD player's memory.

To view or edit the existing data, click on the **Display Data** button. The following information window appears.





The left portion of the window shows a comprehensive list of all commands in the current stack. The right side of the window provides methods to create, change and delete commands from the stack/group. The colored arrows indicate the edit flow of a command. A list of actions available for a command is as follows:

- Copy – move a copy of the command over to the edit portion of the window
- Replace – replace the original command with the edited version
- Insert – move the command in another location in the command stack
- Delete – remove the command from the stack
- Save As – store a copy of the stack on the PC including blackboard items
- CSV File Conv – create a file for printing that does not include blackboard items

*Note: Under the Edit column on the right of the window provides common commands as well as a stack closing command, **Period of group**. It is unnecessary to add this command at the end of your command stack unless you wish to add a second stack/group. Eliminating a **Period of group** command causes two separate groups to merge in to a single stack/group.*

Click on a command from the list on the left then choose an action to apply to that command. Once the group is altered in any way, the **OK** button becomes active. Click on **OK** to save your changes.

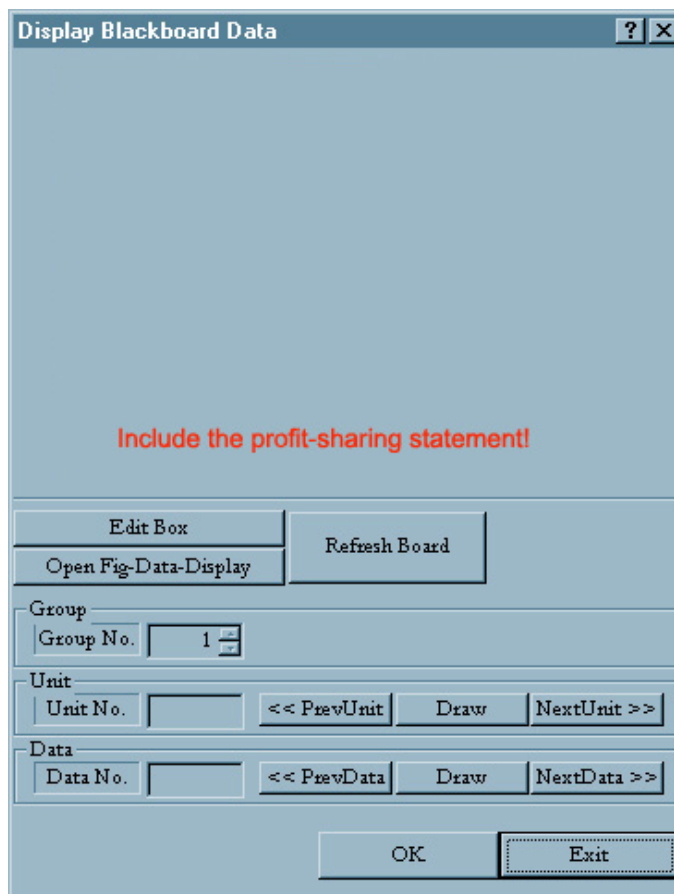
To download the barcode command stack, press the Download button at the lower left corner of the Command Stack/Blackboard pop-up window.

## **Blackboard**

The Blackboard settings are as follows:

- Num of group – Total number of Blackboard displays  
*If no data is present, the number remains as '1'.*
- Num of unit – the total number of graphic *pages*
- Num of data – the total number of blackboard objects

Pressing the Blackboard's **Display data** button (column on right) causes the Blackboard Data window to open.



This versatile area of DataMan2 supports blackboard editing and additions. The available actions are as follows:

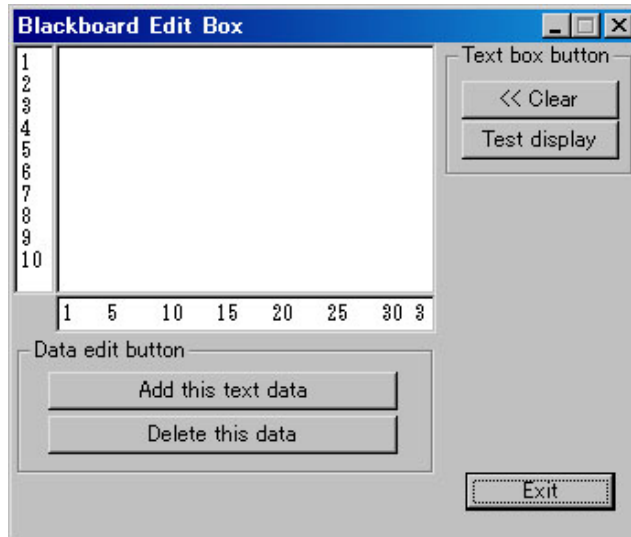
- Edit Box – to add or delete *text* data on the blackboard
- Open Fig-Data-Display – to reveal existing data without edit options
- Refresh Board – to re-draw the graphic and/or text
- Group No. – the group number associated with the current display
- Unit No. – provides a quantity for the number of units out of the total units (# / #)  
*The buttons to the right of this field allow scrolling through the available units with Draw showing the current unit.*
- Data No. – shows the number of the data out of the total quantity of data (# / #)  
*The buttons to the right of this field allow scrolling through the available data objects with Draw showing the current data object.*

To work with existing blackboard data, follow the directions below.

1. Select the group number.
2. Click on Draw to reveal the first unit or object.

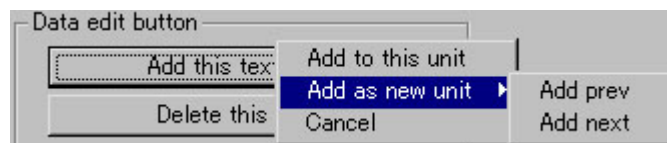
3. Click on Refresh Canvas to clear the drawing.
4. Select Previous Unit or Next Unit to move through the blackboard data.

To add or edit the blackboard text data, click on the Edit Box button and make your changes. Once edits are complete, click on the appropriate Data Edit button.

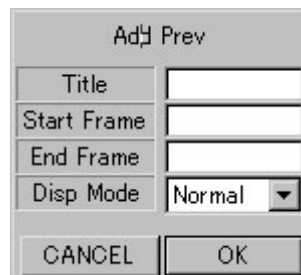


To add text data to the blackboard, follow the directions below.

1. Type in the text on the line of your choosing (1 through 10 available).
2. Click on the **Test display** button.  
*The canvas area changes to reveal the added text on the blackboard display. Press the **Clear** button erases the text just added.*
3. Select the **Add this text data** button.  
*A pop-up menu appears with location options.*



4. Choose the location for the new text.  
*If adding the text as a new unit, the following pop-up menu appears.*

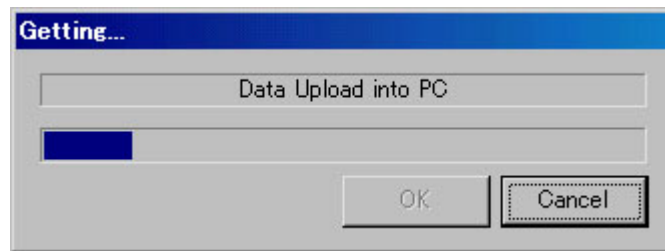


5. Input the numerical location values.  
*Clicking on **OK** before adding values cause the application to automatically select Title 1, Start Frame 000001, End Frame 000001, and DispMode Normal.*  
*Note: Display Modes are Normal, Still, Asterick, Astr-Still, Auto, Auto-Still, Prev-Still.*
6. Press the **OK** button on the Add submenu (*Add Prev* submenu displayed above) to eliminate the data from the canvas.  
*Eliminated data flickers.*

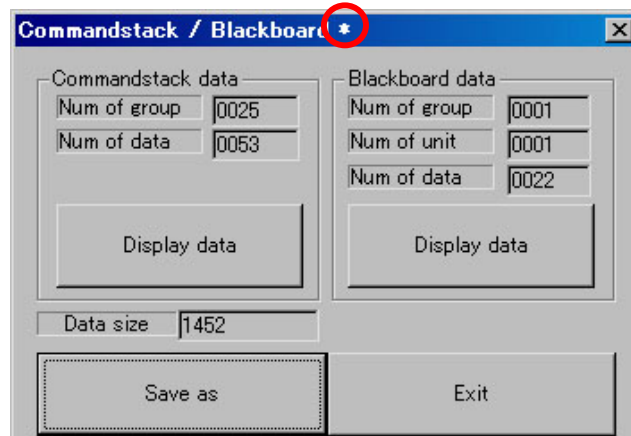
*Note: Adding or modifying graphics or graphical objects is not possible.*

### 3.2.2 Barcode Command Stack / Blackboard Upload

To upload data to the PC from the DVD player, press the CS/BB Data Upload button to begin the process. From the Data Upload progress box, click on **OK** to accept the uploaded data.



After the data is recalled from the DVD player, the following pop-up window appears with the current values.



*Note: The asterisk in the title bar indicates that the file has been modified or uploaded. You must save the file to the PC to retain the data.*

#### **Comandstack**

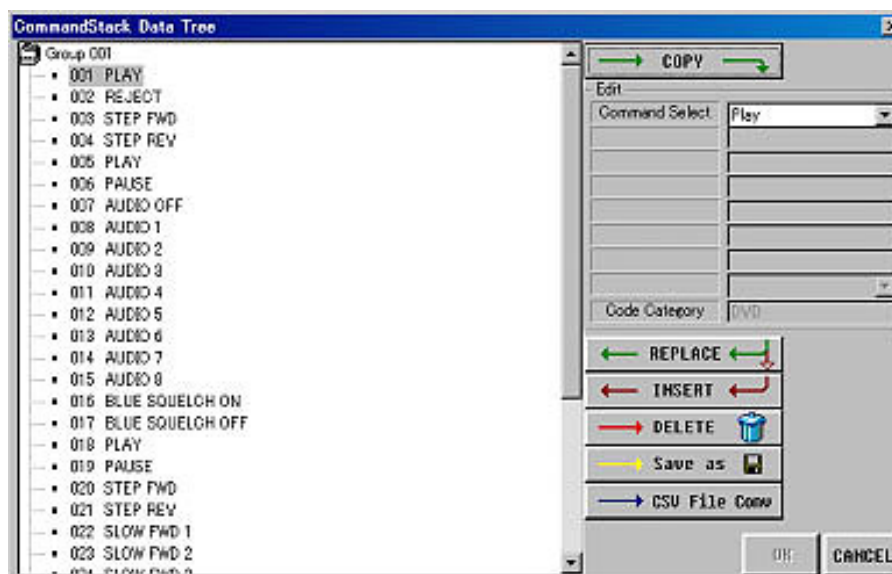
The Command Stack Data settings are as follows:

- Num of group – Total number of Barcode command stacks  
*If no data is present, the number remains as '1'.*
- Num of data – the number of commands in that stack/group

Pressing the Command stack's **Display data** button (column on left) causes the CS data details window to open. This dialog box is discussed later in this chapter.

Other information pertaining to the Command Stack includes the size of the selected data (Data size). This monitoring field assists the user to not exceed the available space on the PC's hard drive or in the DVD player's memory.

To view or edit the existing data, click on the **Display Data** button. The following window appears.



The left portion of the window shows a comprehensive list of all commands in the current stack. The right side of the window provides methods to create, change and delete commands from the stack/group. The colored arrows indicate the edit flow of a command. A list of actions available for a command is as follows:

- Copy – move a copy of the command over to the edit portion of the window
- Replace – replace the original command with the edited version
- Insert – move the command in another location in the command stack
- Delete – remove the command from the stack
- Save As – store a copy of the stack on the PC including blackboard items
- CSV File Conv – create a file for printing that does not include blackboard items

*Note: Under the Edit column on the right of the window provides common commands as well as a stack closing command, **Period of group**. It is unnecessary to add this command at the end of your command stack unless you wish to add a second stack/group. Eliminating a **Period of group** command causes two separate groups to merge in to a single stack/group.*

Click on a command from the list on the left then choose an action to apply to that command. Once the group is altered in any way, the **OK** button becomes active. Click on **OK** to save your changes.

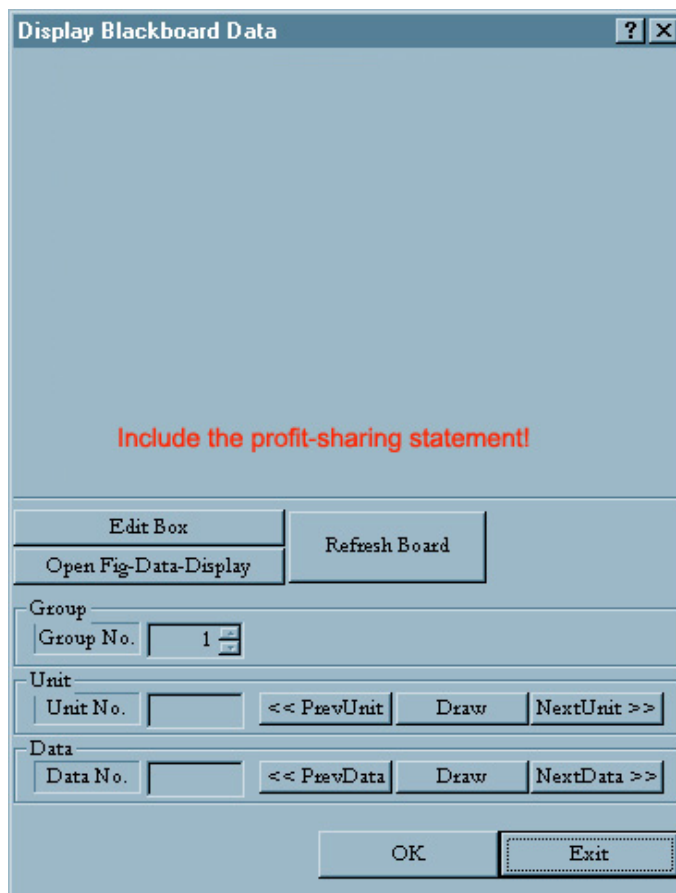
To save the uploaded barcode command stack, press the **Save As** button at the lower left corner of the Command Stack/Blackboard pop-up window.

## **Blackboard**

The Blackboard settings are as follows:

- Num of group – Total number of Blackboard displays  
*If no data is present, the number remains as '1'.*
- Num of unit – the total number of graphic pages
- Num of data – the total number of blackboard objects

Pressing the Blackboard's **Display data** button (column on right) causes the Blackboard Data window to open.



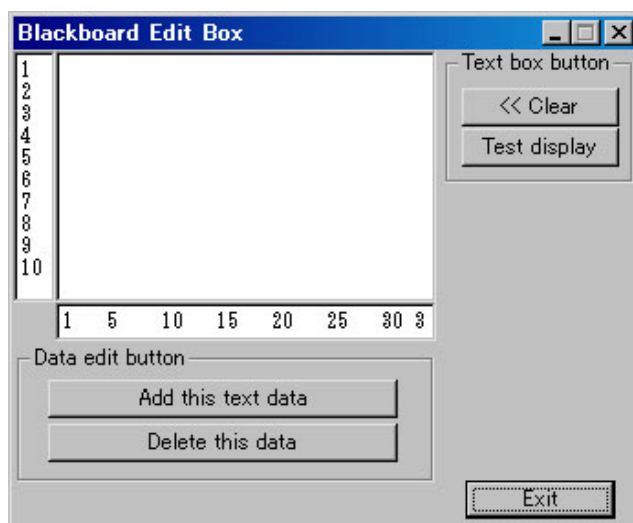
This versatile area of DataMan2 supports blackboard editing and additions. The available actions are as follows:

- Edit Box – to add, edit or delete text data on the blackboard
- Open Fig-Data-Display – to reveal existing data without edit options
- Refresh Board – to re-draw the graphic and/or text
- Group No. – the group number associated with the current display
- Unit No. – provides a quantity for the number of units out of the total units (# / #)  
*The buttons to the right of this field allow scrolling through the available units with Draw showing the current unit.*
- Data No. – shows the number of the data out of the total quantity of data (# / #)  
*The buttons to the right of this field allow scrolling through the available data objects with Draw showing the current data object.*

To work with existing blackboard data, follow the directions below.

1. Select the group number.
2. Click on Draw to reveal the first unit or object.
3. Click on Refresh Canvas to clear the drawing.
4. Select Previous Unit or Next Unit to move through the blackboard data.

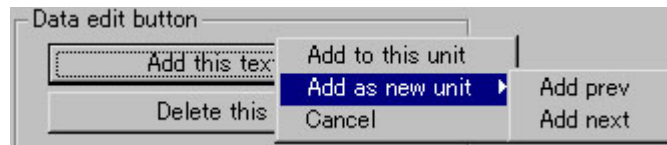
To add or edit the blackboard data, click on the Edit Box button and make your changes. Once edits are complete, click on the appropriate Data Edit button.



To add text data to the blackboard, follow the directions below.

1. Type in the text on the line of your choosing (1 through 10 available).
2. Click on the **Test display** button.  
*The canvas area changes to reveal the added text on the blackboard display.  
Press the **Clear** button erases the text just added.*

3. Select the **Add this text data** button.  
*A pop-up menu appears with location options.*



4. Choose the location for the new text.  
*If adding the text as a new unit, the following pop-up menu appears.*

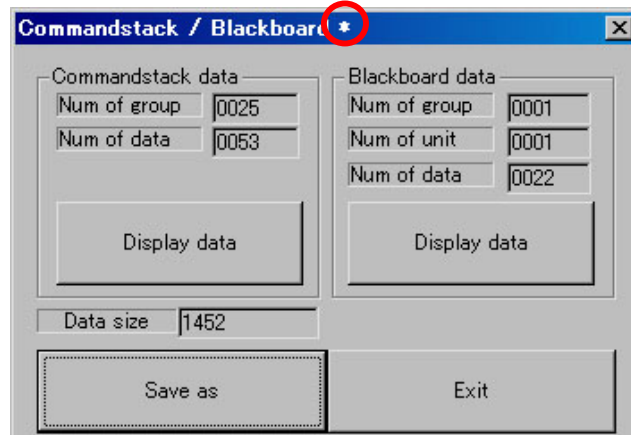
5. Input the numerical location values.  
*Clicking on **OK** before adding values cause the application to automatically select Title 1, Start Frame 000001, End Frame 000001, and DispMode Normal.*  
*Note: Display Modes are Normal, Still, Asterick, Astr-Still, Auto, Auto-Still, Prev-Still.*
6. Press the **OK** button on the Add submenu (*Add Prev* submenu displayed above) to eliminate the data from the canvas.  
*Eliminated data flickers.*
7. Click on **Save As** from the Command Stack/Blackboard pop-up menu to add the file to the PC.
8. Create a name for your file with the .bcd extension and save to the PC.  
*The file is now available for later downloads.*

### 3.2.3 Create New Command Stack Data

To build a new Command stack or Blackboard file, click on the **Create New Command Stack Data** button from the pop-up menu. Activating this button calls the Commandstack / Blackboard data submenu to the screen.

The submenu consists of two types of fields, Commandstack data and Blackboard data. Each of the fields is described in the following sections of this manual.





*Note: The asterisk in the title bar indicates that the file has been modified or uploaded. You must save the file to the PC to retain the data.*

## Comandstack

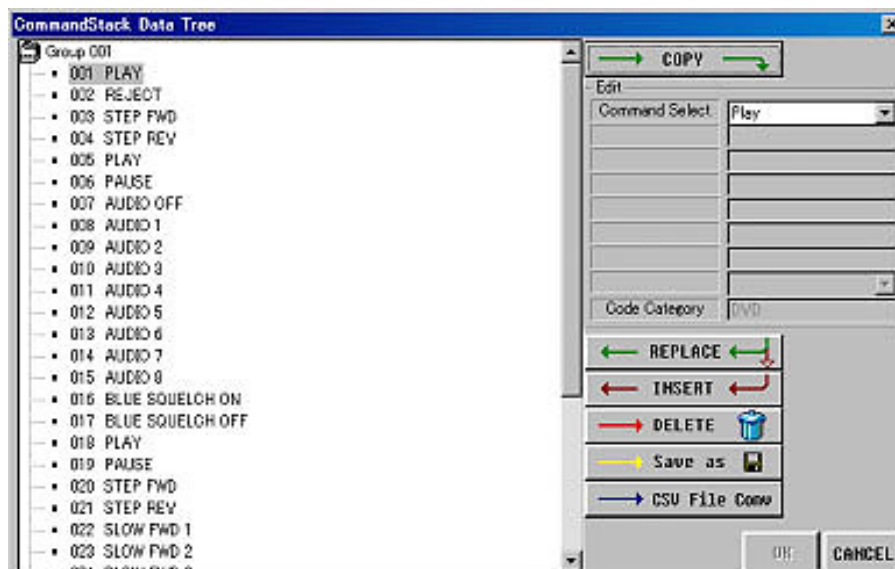
The Command Stack Data settings are as follows:

- Num of group – Total number of Barcode command stacks  
*If no data is present, the number remains as '1'.*
- Num of data – the number of commands in that stack/group

Pressing the Command stack's **Display data** button (column on left) causes the CS data details window to open. This dialog box is discussed later in this chapter.

Other information pertaining to the Command Stack includes the size of the selected data (Data size). This monitoring field assists the user to not exceed the available space on the PC's hard drive or in the DVD player's memory.

To view or edit the existing data, click on the **Display Data** button. The following window appears.



The left portion of the window shows a comprehensive list of all commands in the current stack. The right side of the window provides methods to create, change and delete commands from the stack/group. The colored arrows indicate the edit flow of a command. A list of actions available for a command is as follows:

- Copy – move a copy of the command over to the edit portion of the window
- Replace – replace the original command with the edited version
- Insert – move the command in another location in the command stack
- Delete – remove the command from the stack
- Save As – store a copy of the stack on the PC including blackboard items
- CSV File Conv – create a file for printing that does not include blackboard items

*Note: Under the Edit column on the right of the window provides common commands as well as a stack closing command, **Period of group**. It is unnecessary to add this command at the end of your command stack unless you wish to add a second stack/group. Eliminating a **Period of group** command causes two separate groups to merge in to a single stack/group.*

Click on a command from the list on the left then choose an action to apply to that command. Once the group is altered in any way, the **OK** button becomes active. Click on **OK** to save your changes.

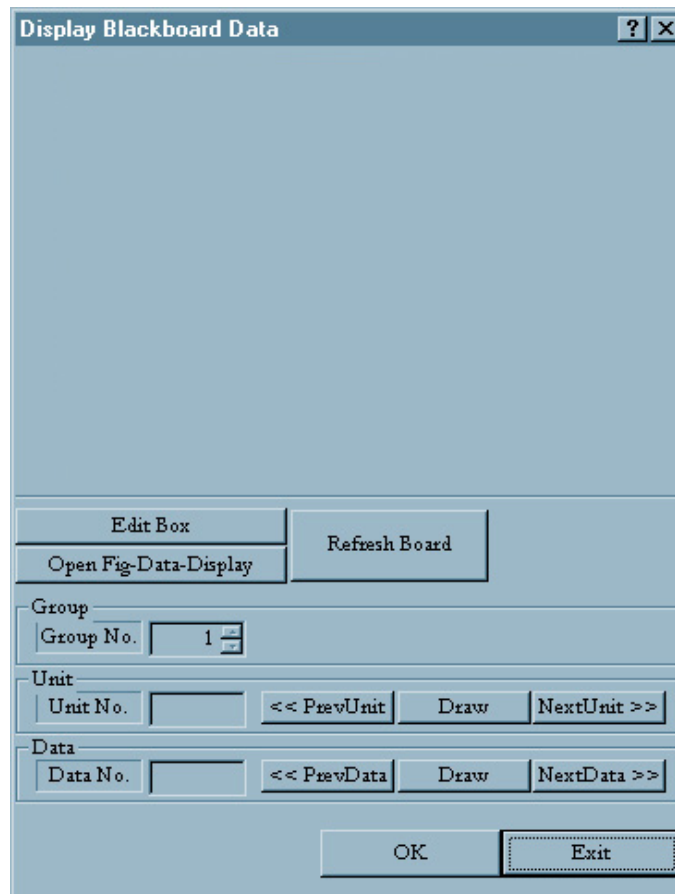
To save the uploaded barcode command stack, press the **Save As** button at the lower left corner of the Command Stack/Blackboard pop-up window.

## **Blackboard**

The Blackboard settings are as follows:

- Num of group – Total number of Blackboard displays  
*If no data is present, the number remains as '1'.*
- Num of unit – the total number of graphic pages
- Num of data – the total number of blackboard objects

Pressing the Blackboard's **Display data** button (column on right) causes an empty Blackboard Data window to open.



This versatile area of DataMan2 supports blackboard editing and additions. The available actions are as follows:

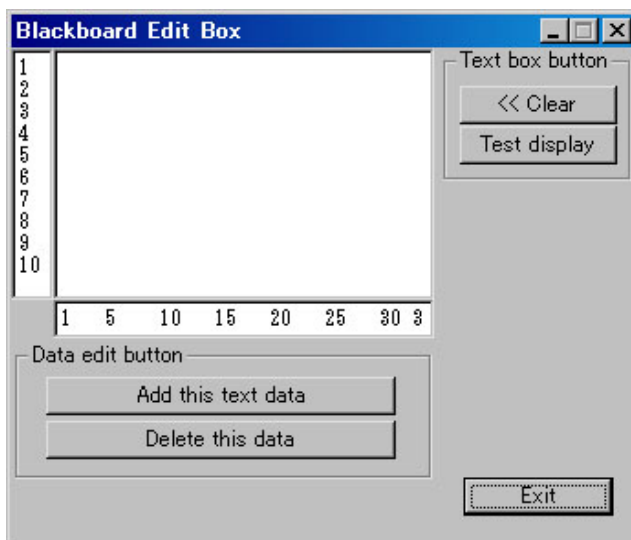
- Edit Box – to add, edit or delete text data on the blackboard
- Open Fig-Data-Display – to reveal existing data without edit options
- Refresh Board – to re-draw the graphic and/or text
- Group No. – the group number associated with the current display
- Unit No. – provides a quantity for the number of units out of the total units (# / #)  
*The buttons to the right of this field allow scrolling through the available units with Draw showing the current unit.*
- Data No. – shows the number of the data out of the total quantity of data (# / #)  
*The buttons to the right of this field allow scrolling through the available data objects with Draw showing the current data object.*

To work with existing blackboard data, follow the directions below.

1. Select the group number.
2. Click on Draw to reveal the first unit or object.

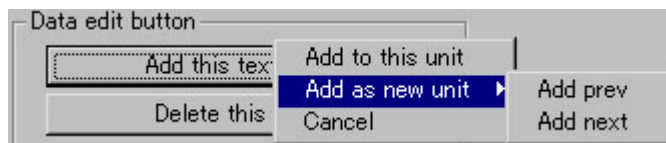
3. Click on Refresh Canvas to clear the drawing.
4. Select Previous Unit or Next Unit to move through the blackboard data.

To add or edit the blackboard data, click on the Edit Box button and make your changes. Once edits are complete, click on the appropriate Data Edit button.

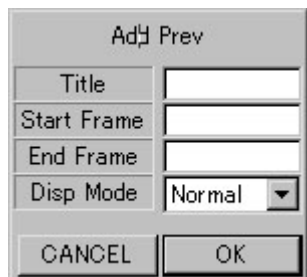


To add text data to the blackboard, follow the directions below.

1. Type in the text on the line of your choosing (1 through 10 available).
2. Click on the **Test display** button.  
*The canvas area changes to reveal the added text on the blackboard display. Press the **Clear** button erases the text just added.*
3. Select the **Add this text data** button.  
*A pop-up menu appears with location options.*



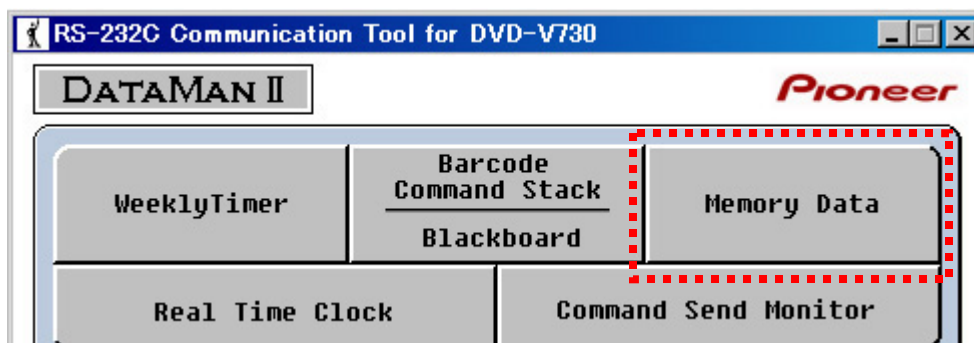
4. Choose the location for the new text.  
*If adding the text as a new unit, the following pop-up menu appears.*



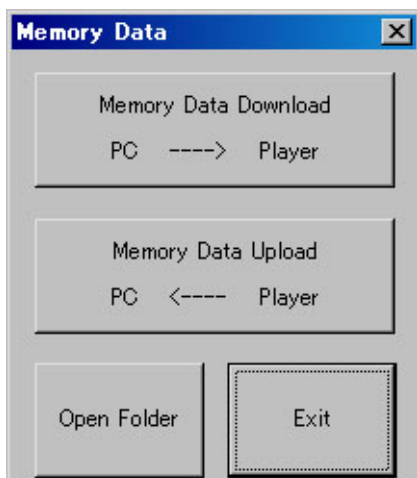
5. Input the numerical location values.  
*Clicking on **OK** before adding values cause the application to automatically select Title 1, Start Frame 000001, End Frame 000001, and DispMode Normal.*  
*Note: Display Modes are Normal, Still, Asterick, Astr-Still, Auto, Auto-Still, Prev-Still.*
6. Press the **OK** button on the Add submenu (*Add Prev* submenu displayed above) to eliminate the data from the canvas.  
*Eliminated data flickers.*
7. Click on **Save As** from the Command Stack/Blackboard pop-up menu to add the file to the PC.
8. Create a name for your file with the .bcd extension and save to the PC.  
*The file is now available for later downloads.*

### 3.3 Memory Data Management

Similar to the previous two functions, the Memory feature supports downloading and uploading data between the PC and the DVD player. The Memory feature has multiple submenus to activate a range of settings. Refer to the following sections for details.



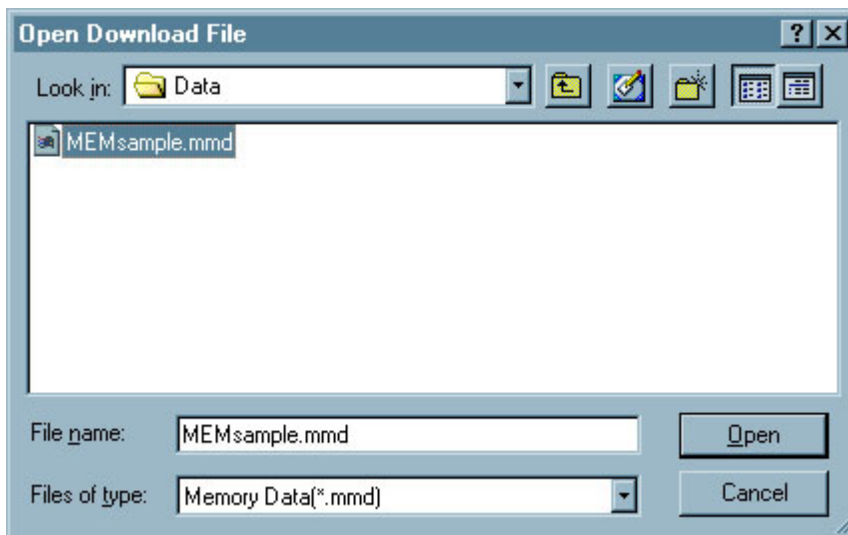
The Memory Data function works with a Memory data file or with all content being held in the DV player's memory. Upon selecting Memory Data from the main menu, a pop-up menu appears. The menu includes the following transmissions:



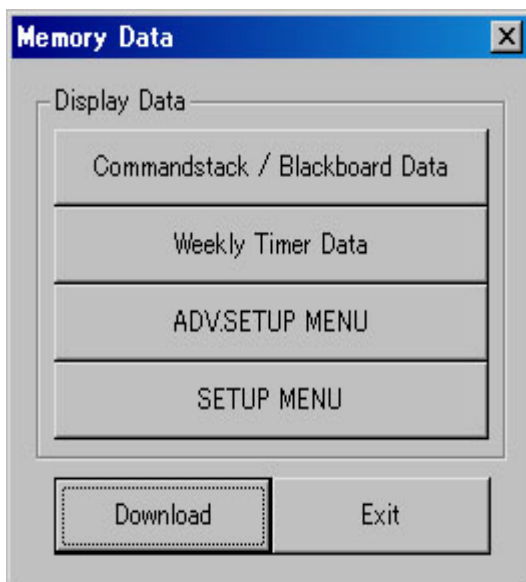
- ◆ **Memory Data Download** – computer (PC) sends data to the DVD player
- ◆ **Memory Data Upload** – DVD player sends data to the PC
- ◆ **Open Folder** – opens last file folder accessed
- ◆ **Exit** – close the program

### 3.3.1 Memory Data Download

Select the file for download before continuing. The extension for a Memory Data file is **.mmd**.



To transfer data from the computer (PC) to the DVD player, press the **Memory Data Download** button from the menu. The following window appears on screen.

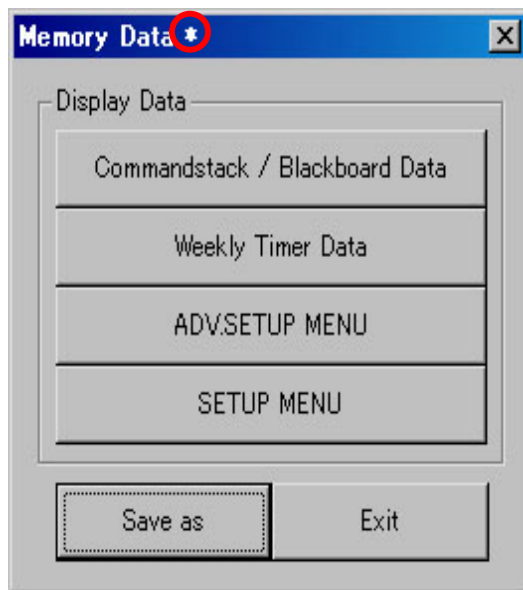


- ◆ Displays the CS/BB data stored in a Memory file on the PC
- ◆ Reveals any weekly timer data stored in a Memory file on the PC
- ◆ Shows advanced setup data residing in a Memory file on the PC
- ◆ Provides a list of Audio, Language, Video, and general data from a Memory file on the PC
- ◆ Button to begin download to the player
- ◆ Exit from the menu

This window reveals the data stored in a Memory file before downloading to the player. To adjust a setting, refer to the appropriate program menu within DataMan2 or make changes to the player settings and upload the information to the PC first. If all settings are acceptable, click on the **Download** button in the lower left corner of this window.

## 3.3.2 Memory Data Upload

To copy data from the DVD player to the PC, press the **Memory Data Upload** button from the menu. The following window appears on screen.



- ◆ Displays the CS/BB data stored in the DVD player's Memory
- ◆ Reveals any weekly timer data stored in the DVD player's Memory
- ◆ Shows advanced setup data residing in the player's Memory
- ◆ Provides a list of Audio, Language, Video, and general data from the player's Memory
- ◆ Button to save the data from the player's Memory to a new PC file
- ◆ Exit from the menu

*Note: The asterisk in the title bar indicates that the file has been modified or uploaded. You must save the file to retain the data.*

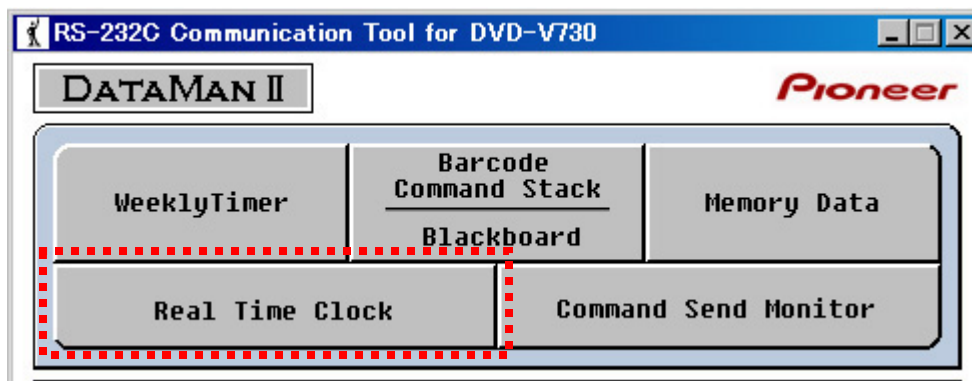
Select a file name that reflects enough information about the contents for easy identification later. Some suggestions include using a T for title followed by the title number, a Chps for a series of chapters followed by the chapter numbers separated by a dash, etc.

To copy the Memory data to the PC, click on the **Save As** button in the lower left corner of this window. Follow the directions below to create a Memory file on the PC.

1. Click on the **Save As** button.
2. Open the appropriate directory.
3. Create a Memory data (.mmd) file name.  
*Other file extensions are BCD for command stack/blackboard data and WTD for Weekly Timer Data. These extensions are explained in earlier sections of this manual.*
4. Click on **Save** to create the Memory Data file on the PC.

## 4.0 CLOCK ADJUSTMENTS

If the DVD player's clock (date or time) is incorrect, use the DataMan2 Real Time Clock feature to synchronize the player and the PC.



◆ Current player clock data/settings

◆ Clock update fields

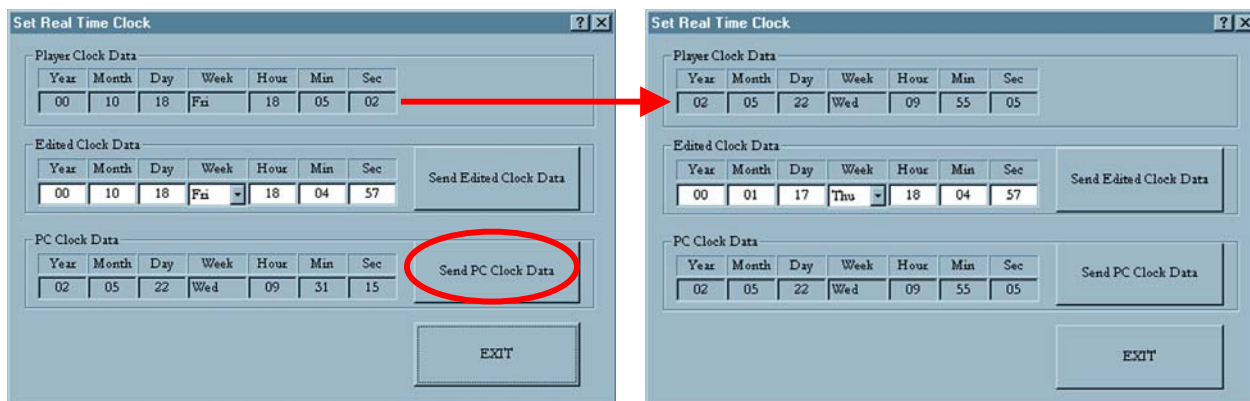
◆ Computer clock data/settings

◆ Send updated clock data to the player

◆ Synchronize the player clock to the PC

◆ Exit without changing the existing clock data

For best performance and clarity, synchronize the PC and the DVD player. Press the Send PC Clock Data button to match the player's clock to the PC.

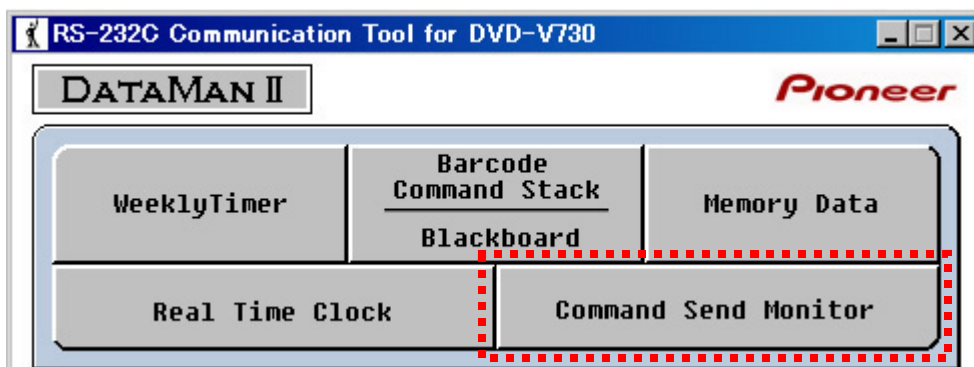


*Note: The Edited Clock Data remains unchanged. These fields are available for manual adjustment but are unaffected by the PC clock data download command.*



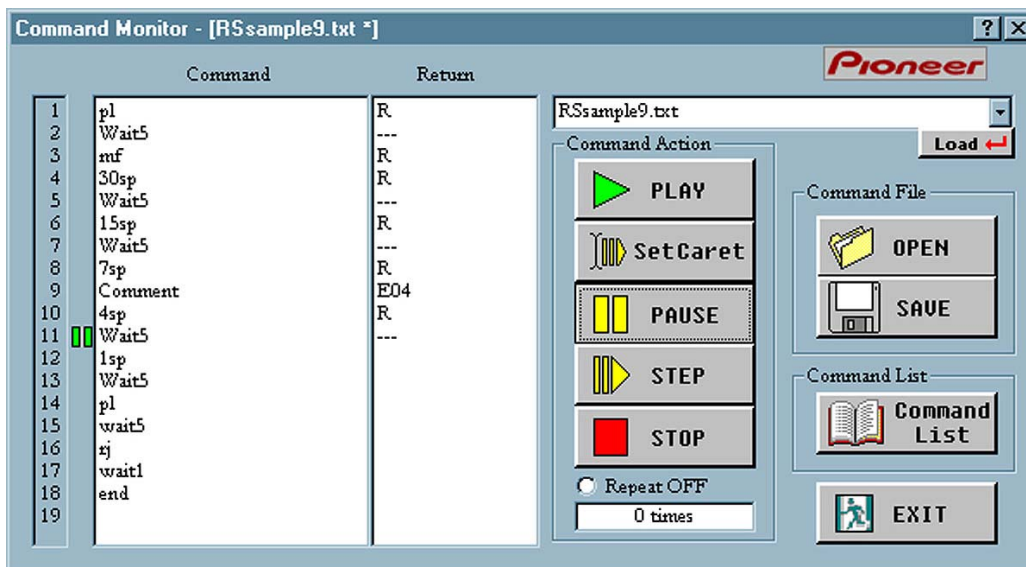
## 5.0 COMMAND-SEND-MONITOR FOR TESTING COMMANDS

The **Command Send Monitor** button tests an RS-232 command before downloading that command to the DVD player or adding the command to a command stack.



Although a command can be tested with this function, it is separate from the Command Stack/Blackboard (CS/BB) feature within the DataMan2 program. Commands can be built then tested for accuracy and existing files may be examined for errors or incorrect command placement, however, the Command Sent Monitor tool is not designed for building command stacks.

Clicking on the **Command Send Monitor** button causes the following window to appear.



The number list on the far left of the window marks a possible line item for a command. There is a maximum of 19 items in a single command. The number list corresponds to an action and the return status for a line item. Once a line item action tests successfully, a capital R appears on the same line in the Return field. If the action fails, an error message appears in the Return field. Click on the Help icon (?) for assistance with errors.

The three primary functions of this window are to work with existing commands (Command File), to build a command using stand RS-232 coding (Command List), or to test a command or series of commands (Command Action). Each of these functions is discussed in the following sections.

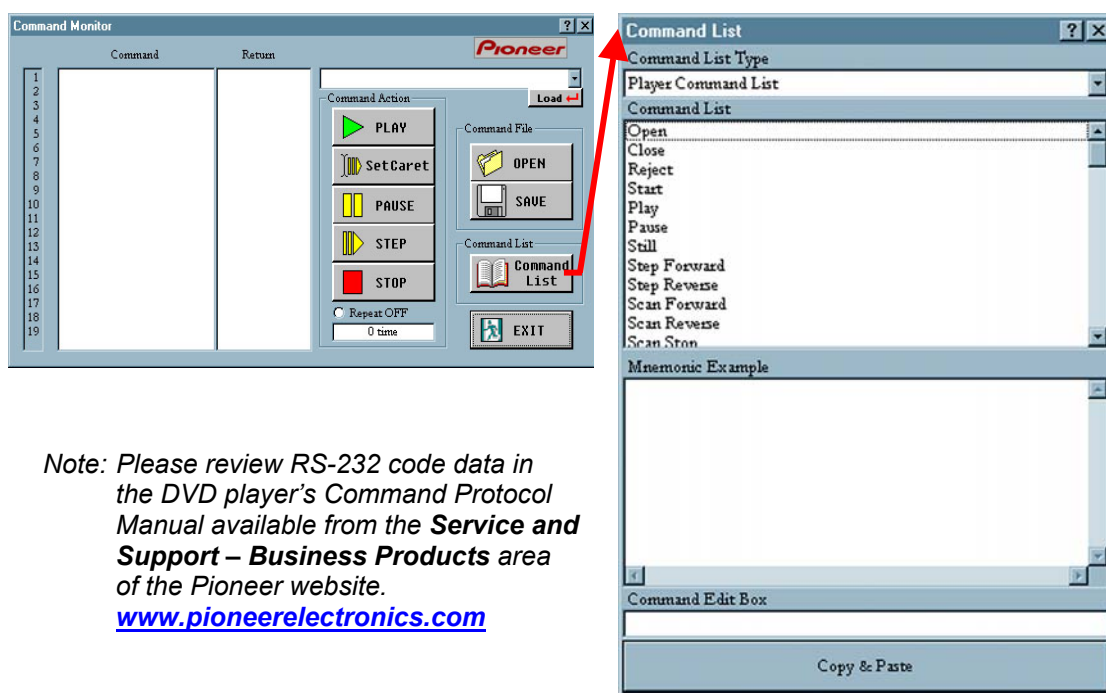
## 5.1 Command File

The two options under Command File support opening an existing file or to save a changed file. Only a single command file may be open at a time. If a file is already open on the monitor screen, opening a second command file replaces the original file with the new file.

The original file is removed from the window but remains unaffected. However, any changes or corrections to the original file are lost. Save the file to the PC using the **Save** button (located below the **Open File** button) before accessing a another command file.

## 5.2 Command List

There are two options under Command List. The button labeled **Command List** calls a dialog box to assist with available commands and the codes associated with the commands.



*Note: Please review RS-232 code data in the DVD player's Command Protocol Manual available from the **Service and Support – Business Products** area of the Pioneer website.*  
[www.pioneerelectronics.com](http://www.pioneerelectronics.com)

To create a command, follow the instructions below.

1. Click on the **Command List** button to open the dialog box.
2. Confirm that the *Command List Type* field is set to Player Command List.
3. Select a command from the list.
4. Use the Command Edit Box to add a modifier or value, if necessary.  
*Although an RS-232 code may be available from the list, some actions require numeric qualifiers. Actions such as a search or a subtitle selection must include a numeric value.*
5. Click on the **Copy & Paste** button at the bottom of the dialog box.
6. Repeat steps 2 through 4 to add line items until the command is complete.

7. Input END as the last line item of the command.
8. Press the **Play** button or the appropriate button to test the command.
9. Add mnemonic modifiers if necessary using the Command Edit Box.
10. Click on the **Copy & Paste** button to add the command.

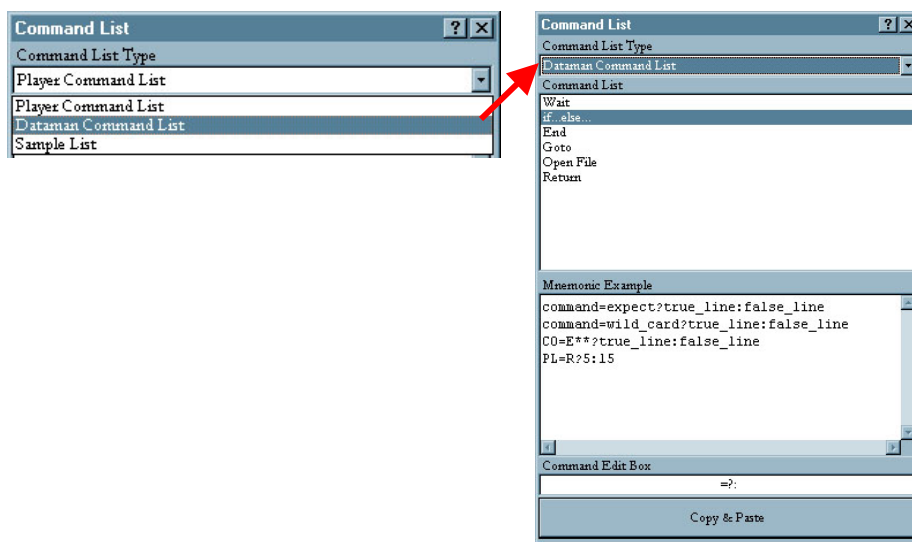
*Enter a file name that indicates the nature of the command.*

When creating a command to be saved to the PC, always input END or ENTER as the last line of the list. Without this closing item, the command may fail to perform as expected.

For assistance with the items in the Player Command List, refer to the DVD-V7400 Command Protocol Manual. This document is available for download from the Pioneer Electronics website under the [Service & Support](#) tab – Business Products Support.

The lower button under Command List, **Exit**, closes the monitor screen *without* storing unsaved data.

DataMan2 offers six additional line items for a player command. To review these items/elements, click on the drop-down menu under Command List Type.



The *Command List Type* field provides the following options:

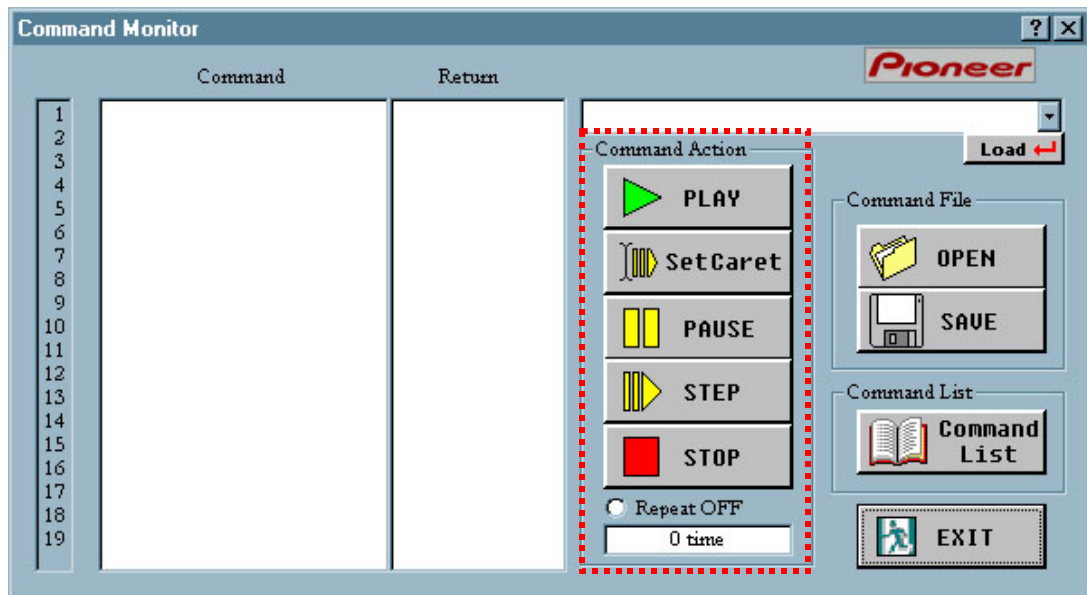
- Player Command List – (default) standard activities available for building a command
- Dataman Command List – a series a actions that are particular to DataMan2

Action	Description
Wait	Playback stops for a selected time period then continues
If... else...	A series of true/false <i>cause</i> statements that result in one or more possible <i>effects</i>
End	Close the series of actions
Goto	Jump to a specific line item in a command
Open File	Launch a stated file from within the command
Return	Move back to a previous line in the command

- Sample List – a group of command examples

## 5.3 Command Action

The buttons under Command Action are to edit and test a command before saving the data.



The buttons consist of the following activities:

- **Play** – play back RS-232 lines items from the list (shown in the Command window to the left) in sequence from top to bottom
- **Set Caret** – select the line item for the first action (move the cursor to directly in front of the selected line item and click on Set Caret; playback will begin from that line)
- **Pause** – halt playback of the list but remain at the current line item
- **Step** – advance to the next line item on the list
- **Stop** – halt playback and return to the starting point (on line item 1 or at the caret point)

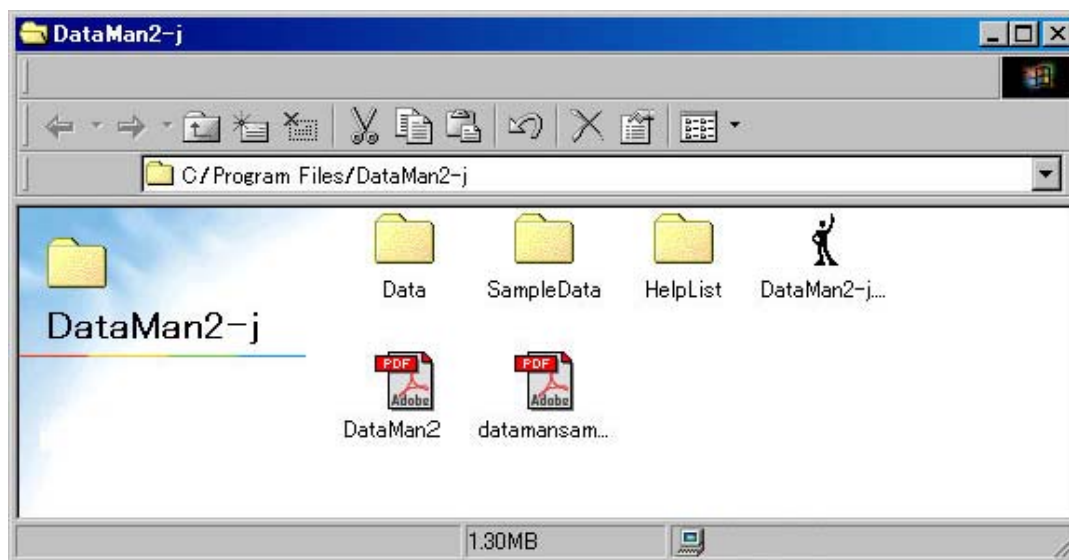
In addition to the buttons described above, a radio selector provides looping playback when necessary. Click on the **Repeat OFF** selector to activate. Each time the command repeats, the counter below the selector incrementally advances. The looping continues until the command is halted or deactivated.

## 6.0 ADDITIONAL INFORMATION

This section discusses the files and the Help information that download to your computer with the DataMan2 program. This chapter may be skipped if you are familiar with file structures and Help files.

### 6.1 Program Files

The DataMan2 program files are located in the Program Files directory unless a different directory was selected during the program installation.



Although the subdirectories may be launched from this window, Pioneer recommends that you launch the program to view the samples or work with the commands.

### 6.2 Help List

The Help List folder contains the following files:

- Applist.txt – descriptions of DataMan2 commands
- Cmdlist.txt – descriptions of player commands
- Spllist.txt – descriptions of command examples

Right-clicking on a title or a box in DataMan2 opens a pop-up window with information on that field. If the pop-up information is insufficient, click on the Question icon (?) in the upper left corner of the screen.

For additional information or assistance please contact the Support group at Pioneer Electronics:

Email: [dvdv@pnmt.com](mailto:dvdv@pnmt.com)

Phone: 310/952-2000

(this page intentionally left blank)

# *Pioneer*

---

## DataMan2

Pioneer Electronics (USA), Inc.  
Business Solutions Division (BSC)  
2265 East 220<sup>th</sup> Street  
Long Beach, California 90810  
United States of America

(310) 952-2000

<http://www.pioneerelectronics.com>

## Free Manuals Download Website

<http://myh66.com>

<http://usermanuals.us>

<http://www.somanuals.com>

<http://www.4manuals.cc>

<http://www.manual-lib.com>

<http://www.404manual.com>

<http://www.luxmanual.com>

<http://aubethermostatmanual.com>

Golf course search by state

<http://golfingnear.com>

Email search by domain

<http://emailbydomain.com>

Auto manuals search

<http://auto.somanuals.com>

TV manuals search

<http://tv.somanuals.com>