



Remote Control Application for the XDJ-R1

remotebox

<http://pioneerdj.com/support/>

The Pioneer DJ support site shown above offers FAQs, information on software and various other types of information and services to allow you to use your product in greater comfort.

Operating Instructions



remotebox

Before start

remotebox is a smartphone/tablet application for connecting to the XDJ-R1 wirelessly to operate the XDJ-R1 remotely.

How to read this manual

In this manual, names of channels and buttons indicated on the product, names of menus in the software, etc., are indicated within square brackets ([]). (e.g. [MASTER] channel, [ON/OFF], [File] menu)

Operating environment

iPhone-, iPod touch- and iPad-compatible iOS 4.3 or later required

Downloading and installing remotebox

Download the remotebox application using a mobile device or computer, then install it on the mobile device.

- The remotebox application can be downloaded from the App Store.

remotebox Panels

Menu screen



1 Operation area selection panel

When an operation area is selected and tapped, the screen switches to the control screen.

→ *Control screens* on page 6

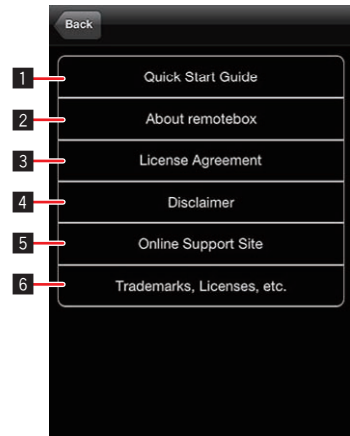
2 Help button

Used to open the [Help] screen.

3 Settings button

Used to check and change the various settings.

Help screen



1 Quick Start Guide

Used to open the Quick Start Guide.

2 About remotebox

Used to display the application's version information.

3 License Agreement

Used to display the software license agreement.

4 Disclaimer

Used to display the disclaimer.

5 Online Support Site

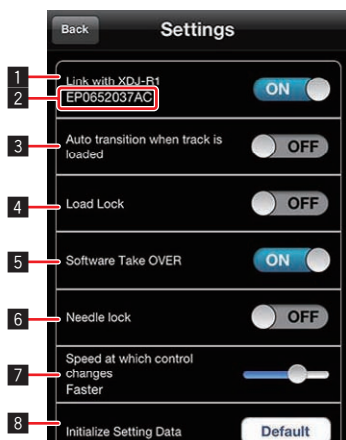
Used to display the online support site.

6 Trademarks, Licenses, etc.

Used to display trademarks, licenses, etc.

Settings screen

Various settings can be changed at the [Settings] screen.



1 Link with XDJ-R1

Used to turn the link with the XDJ-R1 on and off.

2 SSID of the connected XDJ-R1

3 Auto transition when track is loaded

Sets whether or not to automatically switch to the deck screen when tracks are loaded on the deck.

4 Load Lock

Sets whether or not new tracks can be loaded on a deck on which a track is playing.

5 Software Take OVER

Used to switch the software take over function when the XDJ-R1 is operated on and off.

6 Needle lock

Used to turn the needle lock function on and off.

7 Adjust knob acceleration

Sets the speed at which remotebox controls operate when they are dragged.

8 Initialize Setting Data

Resets the settings on the [Settings] screen to their defaults.

Basic Operation

Setting the wireless LAN connection on the XDJ-R1

- Perform the procedure below on the XDJ-R1. Also refer to the XDJ-R1's operating instructions.

- Press the **[INFO(UTILITY)]** button for over 1 second.
- Turn the rotary selector, select **[WLAN INFO]**, then press the rotary selector.
- Turn the rotary selector, select **[SSID]**, then press the rotary selector.

Make a note of the **[SSID]** for future reference.

- The first 9 characters of the **[SSID]** are displayed. Turn the rotary selector to display the portion that is not initially displayed.

- Press the **[BACK(TOP)]** button.

Press to return to the previous screen.

- Turn the rotary selector, select **[PASSWORD]**, then press the rotary selector.

Make a note of the **[PASSWORD]** for future reference.

- From the wireless LAN connection settings on the mobile device or computer, display the connectable **[SSID]**s.

- See your device's operating instructions for instructions on searching for or displaying connectable **[SSID]**s.

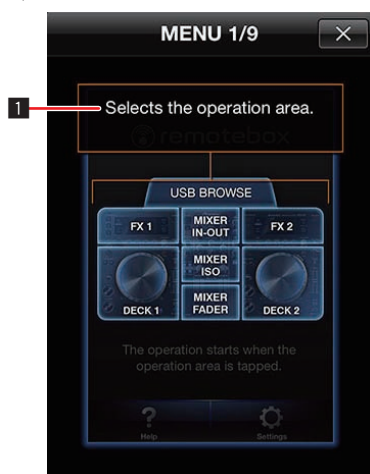
- On the mobile device or computer, select the **[SSID]** checked in step 3.

- Input the password you made a note of in step 5.

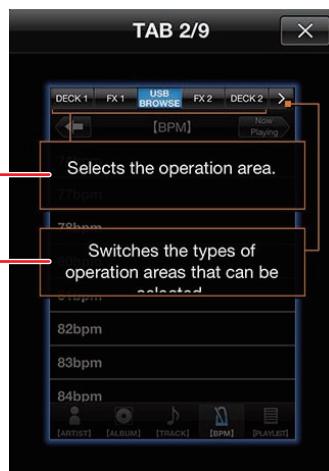
- For safety, be sure to change the default password. For instructions on changing the password, see the XDJ-R1's operating instructions.

QUICK START GUIDE screen

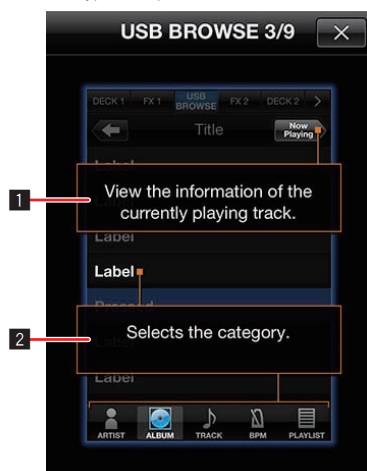
The **[QUICK START GUIDE]** screen provides simple operating instructions for the respective control screens.



- Select the operation area.



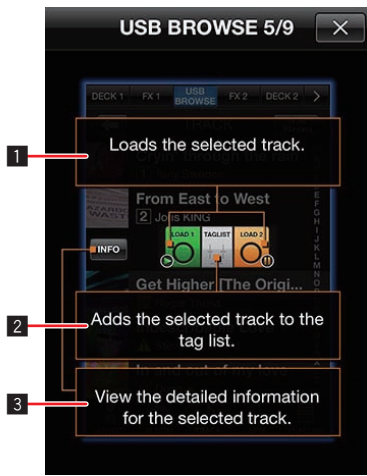
- Used to select the operation area.
- Used to switch the types of operations areas that can be selected.



- Used to display the currently playing track's information.
- Used to select the category.



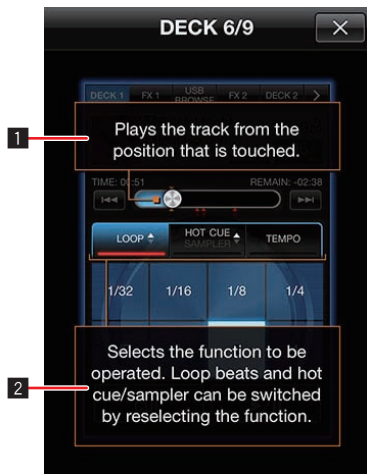
- Used to jump by letter.
- Used to select the track.



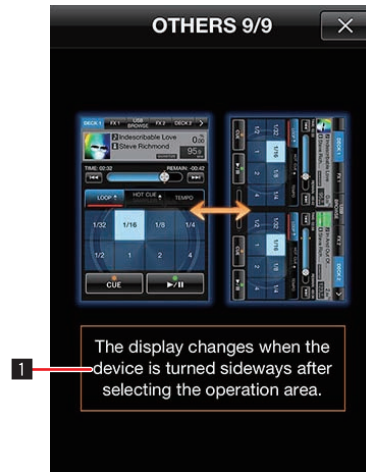
- 1 Used to load the selected track.
- 2 Used to add the selected track to the TAG LIST. The TAG LIST is created in the Playlist.
- 3 Used to display the details of the selected track.



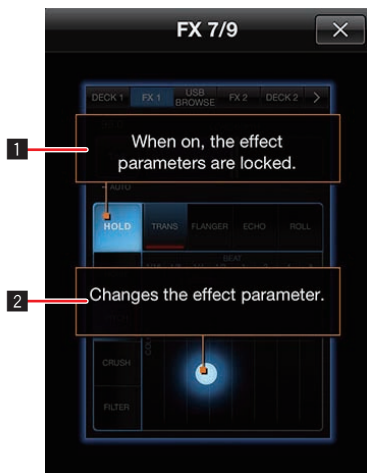
- 1 For all of the controls, the level can be adjusted by dragging vertically.



- 1 Used to play the track from the position that is touched.
- 2 Used to select the function to be operated. Loop beats and hot cue/sampler can be switched by reselecting the function.



- 1 When the mobile device is turned sideways after selecting the operation area, the display switches.



- 1 When on, the effect's parameters are locked.
- 2 Use this to change the effect's parameters.

Control screens

The XDJ-R1 can be operated remotely using the control screens. There are four control screens: [BROWSE], [DECK], [FX] and [MIXER].

About the displays on the smartphone and tablet

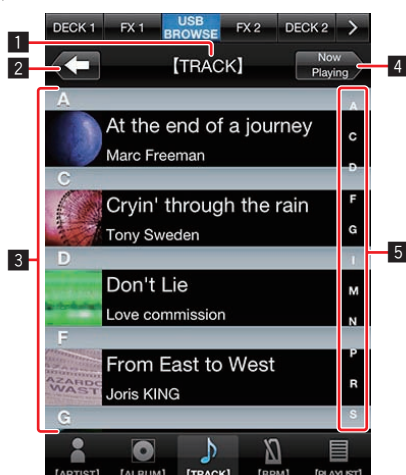
The display differs when [CD] or [USB] is selected for the medium on the XDJ-R1 from when [MIDI] is selected. Furthermore, in each case there are both vertical and horizontal displays.

- For the smartphone version, the menu, [Help] and [Settings] screens cannot be displayed horizontally.
- The QUANTIZE function can only be turned on and off for the tablet version.

BROWSE screen

This screen is used to browse the contents of the USB device connected to the XDJ-R1.

When rekordbox library information is stored on the USB device, the music files can be displayed in the categories set with rekordbox (album, artists, etc.).



1 Title

The location (level) currently being browsed is displayed here.

2 Back button

Used to return to the level above.

3 Display area

The albums, titles, etc., in the location (level) currently being browsed are displayed as a list here. When a track is tapped, the load icon appears, and the track can be loaded by tapping the load icon.

4 Now Playing button

Used to display the XDJ-R1's current playback status.

5 Jumping by letter

Used to scroll the list to the line starting from the specified letter.

Organizing Music in Playlists

Playlists can be created according to your DJ performance requirements to organize the library.

- * The playlist create, edit and sort functions can only be used with remotebox.

1 Tap the [PLAYLIST] category.

A list of playlists is displayed.

2 When is tapped, the playlist name input box opens.

3 Input the playlist name, then tap [Save].

The newly created playlist is added to the [PLAYLIST] category.

4 Tap the newly created playlist to open it.

5 Tap [Edit] and then tap .

A panel for selecting tracks to be added opens.

6 Tap the tracks you want to add to the playlist. (Multiple tracks can be selected.)

7 Tap [Done] to finish adding tracks.

8 Tap [Done] to finish playlist editing.




❖ Editing existing playlists

1 Tap the [PLAYLIST] category.

A list of playlists is displayed.

2 Tap the playlist which you want to edit to open it.

3 Tap [Edit], then add or delete tracks and change the track order.

Icon	Description
	When tapped, a panel for selecting tracks to be added to the playlists opens.
	When dragged, the order of the tracks can be changed.
	When tapped, [DELETE] is displayed. Tap [DELETE] to delete tracks.


4 Tap [Done] to finish playlist editing.

❖ Organizing playlists

1 Tap the [PLAYLIST] category.



A list of playlists is displayed.

2 Add or delete playlists.

Icon	Description
	Use this to create a new playlist.

- When a playlist name is swiped, **[Delete]** is displayed. Tap **[Delete]** to delete the selected playlist.

3 Tap **[Edit]** to edit or move the playlist name.

Icon	Description
	Playlists can be moved by dragging them.
	When this is tapped, [Delete] is displayed. Tap [Delete] to delete the selected playlist.

- When a playlist name is tapped, the playlist name input box opens. Input the playlist name then tap **[Save]**. The playlist name is changed.

4 Tap **[Done]** to finish editing the playlists.

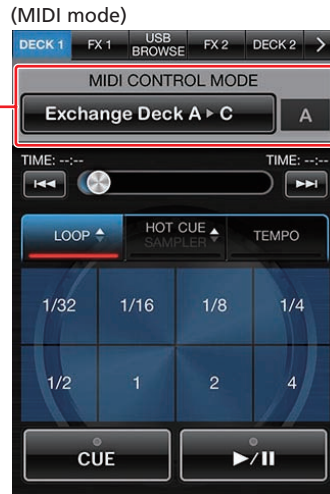
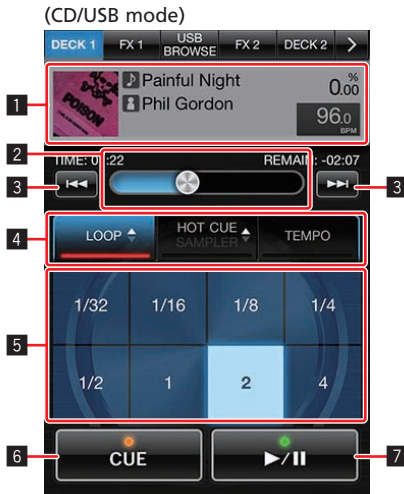
Display screen on a tablet device

The horizontal display screen on a tablet device is displayed as shown below.

- With the tablet version, two levels are displayed and either of the two levels can be selected.



DECK screen



1 Display of currently playing track's information/channel switching button

- In the CD/USB mode
The music file's information is displayed here.
- In the MIDI mode
The channel switches each time the button is tapped.

2 Needle search pad

The sound at a certain position can be played easily by touching your finger to the needle search pad at that position. You can move quickly to the desired playing position by moving your finger along the pad without lifting it.

* The needle search function can only be used with remotebox.

3 Track search ◀◀,▶▶ buttons

These work in the same way as the [TRACK SEARCH]◀◀,▶▶] buttons on the XDJ-R1.

4 Function selection buttons

5 Function operating buttons

6 CUE button

This works in the same way as the [CUE] button on the XDJ-R1.

7 ▶/|| button

This works in the same way as the [▶/||] button on the XDJ-R1.

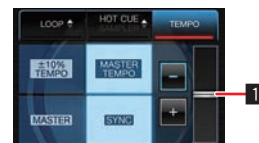
❖ [HOT CUE/SAMPLER]



The hot cue or sampler mode can be selected by tapping [HOT CUE/SAMPLER].

Hot cues and samplers can be operated by tapping the function operating buttons.

❖ [TEMPO]



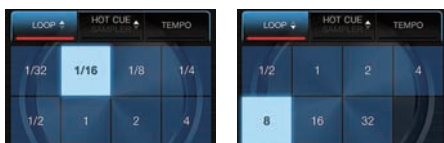
The tempo and sync operations can be performed with the function operating buttons by tapping [TEMPO].

- 1 When the tempo slider is double-tapped, it returns to its default position.

Operations using the function selection and function operating buttons

[LOOP], [HOT CUE/SAMPLER] and [TEMPO] can be switched.

❖ [LOOP]



One of two auto beat loop beat number types can be selected by tapping [LOOP].

The auto beat loop size can be changed and auto beat looping can be turned on and off by tapping the function operating buttons.

Display screen on a tablet device

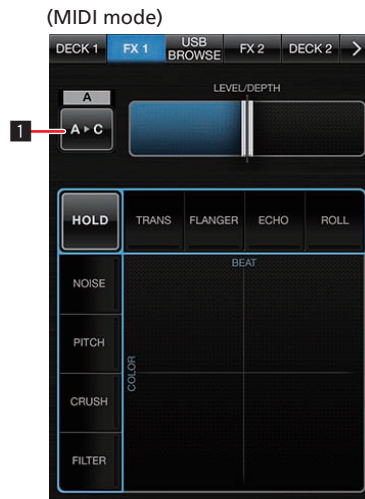
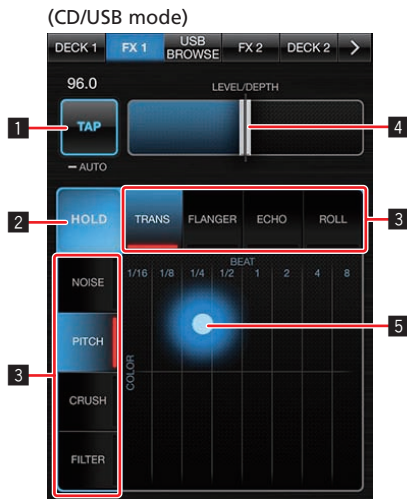
The horizontal display screen on a tablet device is displayed as shown below.



1 QUANTIZE button

This works in the same way as the [QUANTIZE] button on the XDJ-R1.

FX screen



1 TAP button/Channel switching button

- In the CD/USB mode
These works in the same way as the [TAP (AUTO)] button on the XDJ-R1.
- In the MIDI mode
The channel switches each time the button is tapped.

2 HOLD button

Holds the effect. When the [HOLD] button is on and the X-Y pad is touched then released, the effect remains on.

3 COLOR FX SELECT (NOISE, PITCH, CRUSH, FILTER) button, BEAT FX SELECT (TRANS, FLANGER, ECHO, ROLL) button

Switches the beat effect (BEAT FX) and color effect (COLOR FX) type.

4 LEVEL/DEPTH fader

- Adjusts the quantitative parameter of the BEAT FX function.
- When double-tapped, the [LEVEL/DEPTH] fader returns to its default position.

5 X-Y pad

The parameters of two selected effects can be operated with the X-Y pad.
The amount of the color effect (COLOR FX) can be adjusted in the vertical direction, the size of the beat effect (BEAT FX) can be adjusted in the horizontal direction.
The effect is on while the X-Y pad is being touched, and turns off when the pad is released.

Display screen on a tablet device

The horizontal display screen on a tablet device is displayed as shown below.



MIXER screen

(CD/USB mode)



(MIDI mode)



MIXER screen in the CD/USB mode

- MIXER FADER: The CH TRIM, CH FADER and CROSS FADER functions can be operated.
- MIXER ISO: The CH ISO and CROSS FADER functions can be operated.
- MIXER IN-OUT: The MASTER, BOOTH, HEAD PHONE and AUX MIC functions can be operated.
- * When controls or sliders are double-tapped, they return to their default position.

MIXER screen in the MIDI mode

- MIXER FADER: Same as for the CD/USB mode.
- MIXER ISO: Same as for the CD/USB mode.
- MIXER IN-OUT: Same as for the CD/USB mode.
- * When controls or sliders are double-tapped, they return to their default position.
- * For MIXER FADER and MIXER ISO, the channel switches each time the **1** channel switching button is tapped.

Display screen on a tablet device

The horizontal display screen on a tablet device is displayed as shown below.



Others

About trademarks and registered trademarks

- Pioneer, rekordbox and remotebox are trademarks or registered trademarks of the PIONEER CORPORATION.
- Apple, iPad, iPod, iPod touch, iPhone, iTunes, Safari, Finder, Mac, Macintosh and Mac OS are trademarks of Apple Inc., registered in the U.S. and other countries.
- iOS is a trademark on which Cisco holds the trademark right in the US and certain other countries.

The names of companies and products mentioned herein are the trademarks of their respective owners.

Cautions on copyrights

Recordings you have made are for your personal enjoyment and according to copyright laws may not be used without the consent of the copyright holder.

- Music recorded from CDs, etc., is protected by the copyright laws of individual countries and by international treaties. It is the full responsibility of the person who has recorded the music to ensure that it is used legally.
- When handling music downloaded from the Internet, etc., it is the full responsibility of the person who has downloaded the music to ensure that it is used in accordance with the contract concluded with the download site.

Using the support site

Please read the remotebox's operating instructions before making inquiries about remotebox operating procedures and technical issues. Also check the XDJ-R1 FAQ provided on the Pioneer DJ Global site.

<Pioneer DJ Global site>

<http://pioneerdj.com/support/>

- PIONEER CORPORATION collects your personal information for the following purposes:
 - 1 To provide customer support for your purchased product
 - 2 To inform you of product or event information by e-mail
 - 3 To obtain feedback collected by survey for product planning purposes
 - Your personal information is kept confidential corresponding to the privacy policy set forth by our company.
 - For Pioneer's privacy protection policy, see the Pioneer DJ Global site.
- When making inquiries concerning this software, be sure to specify the model name and the name of the manufacturer of your mobile device, the connected peripheral equipment and the version of the operating system being used, and provide a concrete description of the problem and symptoms you are experiencing.
 - To inquire about configuring your computer with non-Pioneer peripheral devices and to obtain the corresponding technical support, contact the specific manufacturer or retailer.
- Pioneer plans to provide version updates for improving the software's functions and performance in the future. We encourage you to make these updates and always use the latest version of the software.

© 2013 PIONEER CORPORATION.

All rights reserved.

PIONEER CORPORATION

1-1, Shin-ogura, Saiwai-ku, Kawasaki-shi, Kanagawa 212-0031, Japan

<DR1112-A>

Free Manuals Download Website

<http://myh66.com>

<http://usermanuals.us>

<http://www.somanuals.com>

<http://www.4manuals.cc>

<http://www.manual-lib.com>

<http://www.404manual.com>

<http://www.luxmanual.com>

<http://aubethermostatmanual.com>

Golf course search by state

<http://golfingnear.com>

Email search by domain

<http://emailbydomain.com>

Auto manuals search

<http://auto.somanuals.com>

TV manuals search

<http://tv.somanuals.com>