



20-Number Memory Speakerphone

Thank you for purchasing your 20-Number Memory Speakerphone from **RadioShack**. It combines a speakerphone and a Caller ID unit in one system. It shows the caller's telephone number (and name, if available in your area), and the date and time of each call, as provided by your local telephone company to Caller ID service subscribers.

what's included

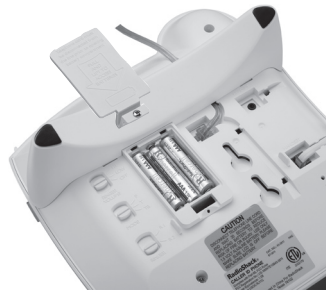
- | | |
|--------------------------------------|---------------------------|
| 20-Number Memory Speakerphone | Stand |
| Long Modular Cord | Short Modular Cord |
| Coiled Handset Cord | Mounting Bracket |
| 3 Index Cards | User's Guide |

preparing your phone

Your phone's display is protected by a plastic label during shipping. Peel off the label before using your phone.

installing batteries

Insert three AAA alkaline batteries (not supplied). When **LOW** appears or the display becomes dim, replace the batteries.



battery notes:

- When replacing batteries, be sure to put in new batteries within one minute of removing the old ones. If not, your time and date will be lost.
- Use only fresh batteries of the required size and recommended type.
- Do not mix batteries of different sizes or chemistries.
- Always remove old or weak batteries. Batteries can leak chemicals that can damage electronic parts.

choosing your settings

After you install your batteries, system information appears in the display, followed by **E** for English, **F** for French and **S** for Spanish.

1. Repeatedly press **REVIEW** ▲ or ▼ to select the desired display language and press **DELETE** to store it. If you do not select a language within a few seconds, the system defaults to English.
2. When **LCD CONTRAST** appears in the display, repeat step 1 to select one of the six settings.
3. When **000 SET AREA CODE** displays and the **0** flashes, repeatedly press **REVIEW** ▲ or ▼ until the first digit of your area code appears. Press **DELETE** to store it. Repeat for each digit of your area code.

NOTE: If you do not press a button, the system automatically sets the area code to 000.

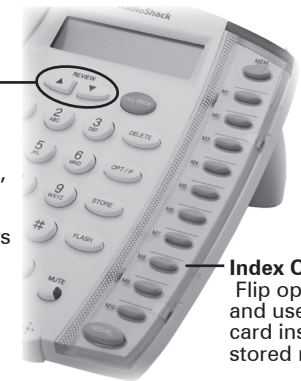
4. Press **REVIEW** ▲ or ▼ to set the hour, and press **DELETE** to store it.

NOTE: If you do not press a key, the system automatically sets the time to 12:00 PM 1/01.

5. Repeat Step 4 to store the minute, month and date.
- To reset the language, contrast, area code and time/date settings:**

1. Hold down **DELETE** and press ▼. **LCD CONTRAST** displays.
2. Repeat Step 1 above to reset each setting.

REVIEW ▲ / ▼
Scroll up or down to set the desired language, LCD contrast, area code, and time/date. Also lets you scroll through all numbers in your Caller ID memory.



Index Card
Flip open the clear cover and use the supplied index card inside to record the stored numbers.

VOL-/VOL+ – controls the volume of the sound through your handset and speakerphone.

CALL BACK – dial a phone number in the Caller ID record.

MEM – stores a number in an indirect memory location (0-9).

SPEAKER – press to switch between the handset and speakerphone for convenient hands-free use. When a headset is connected, press **SPEAKER** to make or answer calls. To end a call, press **SPEAKER** again.

M1-M10 – store 10 numbers and dial them with the touch of a button.

OPT/P (Option/Pause) – press to select different dialing options based on the number you are calling.

STORE – press to store numbers in memory locations. See "Memory Dialing".

HOLD – press to put a call on hold. To resume the call, press the switchhook or lift the handset.

MUTE – press to keep the other party from hearing you. To resume the conversation, release **MUTE**.

REDIAL – press to redial the last number you dialed.

FLASH – press to answer another call if you have Call Waiting.

mounting and connecting the phone

1. Press and pull out the stand from the base.
2. Connect the handset to your phone using the coiled handset cord, and then fit the cable in the groove as shown below.
3. Align the mounting bracket's round tabs with the holes on the base, then slide the mounting bracket upward to snap it into place.
4. Connect one end of the short modular cord into **LINE**, and the other end to the wall plate jack.
5. Fit the keyhole slots over the wall plate studs. Slide the

phone downward to secure it.

6. Use a coin to turn the handset hook 180°.

Handset Hook



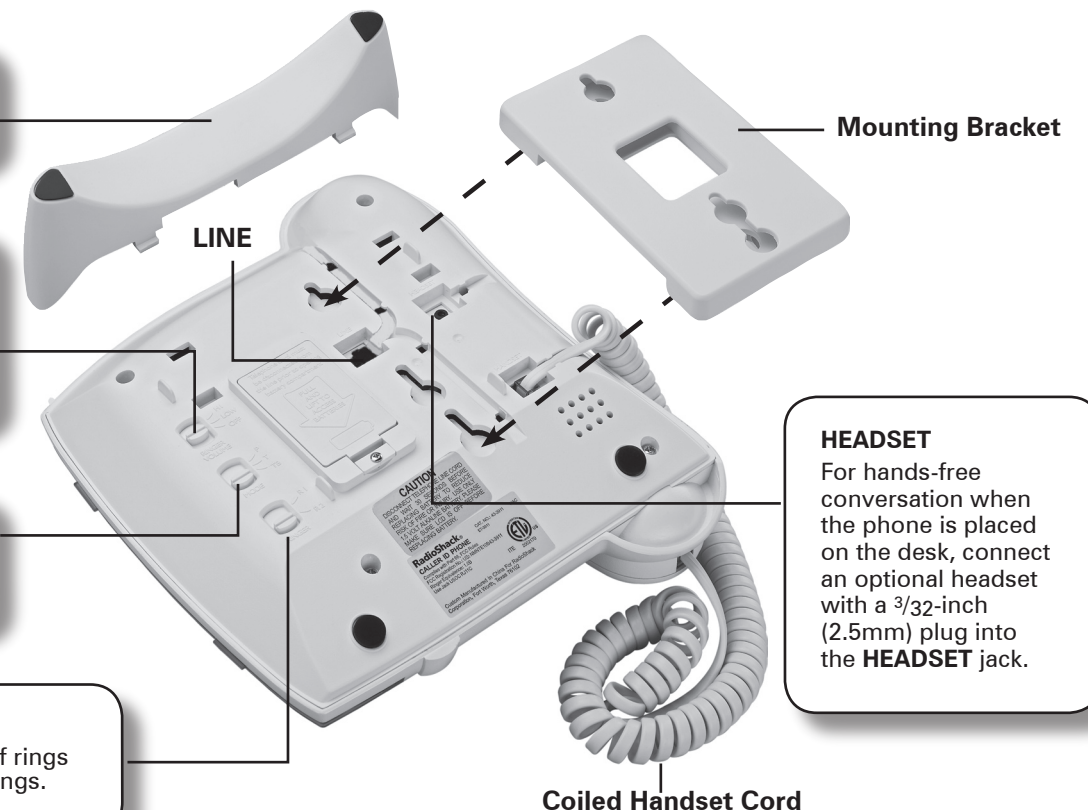
- Your telephone connects directly to a modular phone line jack. If your phone line jack is not a modular jack, you can update the wiring yourself using adapters and jacks from your local **RadioShack** store. Or, call your telephone company to update the wiring for you.
- The USOC number of the jack to be installed is RJ11C.

Use the stand to place your phone on a desk.

RINGER VOLUME HI/LOW/OFF
Set ringer's volume to **HI** or **LOW** as desired. Set to **OFF** for no sound.

MODE T/P/TB
See "setting the dialing mode".

RINGER R1/R2
Set to **R1** for a high number of rings or **R2** for a lower number of rings.



HEADSET
For hands-free conversation when the phone is placed on the desk, connect an optional headset with a 3/32-inch (2.5mm) plug into the **HEADSET** jack.

memory dialing

You can store up to 20 of your most frequently dialed phone numbers, and dial the number by using one of your memory locations (M1-M10 or 0-9).

storing numbers in memory locations

1. Press **STORE**.
2. Enter the phone number you want to store, including 1+ area code for long distance numbers.
3. Press any of the **M1-M10** memory buttons. To store the number to an indirect memory location, press **MEM** and then press any key between 0 and 9.
4. Use the supplied index cards to record stored numbers.

NOTES

- You can store up to 16 digits for each number.
- If you make a mistake while entering the number, press **STORE** twice, and then re-enter the phone number.
- To change a number in memory, store a new one in its place.

entering a pause in a memory number

In some telephone systems, you must dial an access code (9, for example), wait for the second dial tone, and then dial the number.

Press **OPT/P** to enter a three-second pause. For a long pause, press **OPT/P** again. Each time you do this, one digit of memory is being saved.

Note: For more information about **OPT/P**, refer to the section "using **OPT/P**."

dialing a memory number

Press the desired location number (**M1-M10**). To dial a number stored in the indirect memory location, press **MEM** and the location number (**0-9**).

chain dialing

You can make a call using more than one of the phone's memory locations. Chain dialing is useful for dialing special services, such as alternate long distance or bank-by-phone.

testing stored emergency numbers

If you want to test a stored emergency number (police department, fire department, ambulance), make the test call during the late evening or early morning hours to avoid peak demand periods. Remain on the line to explain the reason for your call.

caller ID operation

If you subscribe to Caller ID service, the phone company sends information about the call between the first and second rings of every call you receive. The phone can also show the name of the caller if you have that service.

If the Caller...	Display Reads
Left a message	MSG
Called more than once	REPEAT
Blocks their number or name	PRIVATE
Is not within a Caller ID area	OUT OF AREA
Is calling long distance	LONG DISTANCE

Note: If the Caller ID record is garbled, **LINE ERROR** appears.

reviewing caller ID records

Each time you receive a call, your phone stores a Caller ID record that you can review later. The record includes the following:

- Call number (1, 2, 3, etc.)
- Caller's phone number
- Time and date of the call
- Caller's name (if you have this service)

Repeatedly press **REVIEW ▲** or **▼** to see Caller ID records. **-END OF LIST-** appears after the first or last Caller ID record as you scroll through the list.

NOTES

- Your display can show up to 11 digits of a phone number. If the number is longer, the display shows only the last 11 digits.
- The phone returns to the time/date display after about 20 seconds, if you do not press a key.

deleting caller ID records

You can delete individual Caller ID records, or delete all of them after you review them. You cannot delete Caller ID records that have not been reviewed or during a call.

- To remove a single Caller ID record, press **DELETE** twice.
- To remove multiple records, hold down **DELETE** until **DELETE ALL?** appears. Then, press **DELETE** once. **No CALLS** appears in the display.
- If you have unread records while holding **DELETE**, **xx NEW CALLS** and **PLEASE READ** display alternately. Review the records first before deletion.

using OPT/P

Your phone provides dialing options for different phone systems, allow you to select the correct dialing selection for a phone number before you press **CALLBACK**.

1. Repeatedly press **REVIEW ▲** or **▼** to find the desired phone number.
2. Repeatedly press **OPT/P** to select the desired dialing option. You can select one of the following:
 - seven-digit number
 - 10-digit number (area code + number)
 - 11-digit number (1+ area code + number)

using callback

Press **CALLBACK** to automatically dial the number displayed in the Caller ID display.

setting the dialing mode

Switch **MODE T/P/TB** to **T** or **P** to match the type of service you have. If you are not sure which service you have, do this simple test.

1. Set **MODE** to **T**.
2. Lift the handset to press **SPEAKER** and listen for the dial tone.
 - If your dial tone stops, you have touch-tone service. Leave **MODE** to **T**.
 - If the dial tone continues, you have pulse service. Set **MODE** to **P**.
3. Press any number other than 0.

NOTE: TB is designated for use in the UK.

using tone services on a pulse line

If you have a pulse line, you might need to use tone service for special services, such as bank-by-phone. To use tone service, do the following:

1. Be sure **MODE** is set to **P** and dial the number.
2. When the system answers, press *****. Any additional numbers you press will send a tone signal.

After you hang up, your phone automatically resets to pulse dialing.

important safety instructions

When using your telephone equipment, basic safety precautions should always be followed to reduce the risk of fire, electric shock, and injury to persons, including the following:

- Do not use this product near water, for example, near a bathtub, washbowl, kitchen sink or laundry tub, in a wet basement or near a swimming pool.
- Avoid using a telephone (other than a cordless type) during an electrical storm. There may be a remote risk of electric shock from lightning.
- Do not use the telephone to report a gas leak in the vicinity of the leak.
- Use only the batteries indicated in this manual. Do not dispose of batteries in a fire. They may explode. Check with local codes for possible special disposal instructions.

troubleshooting

No dial tone — Be sure the handset and phone line cords are securely connected.

Display is blank — Be sure batteries are correctly installed.

Volume drops or sound is distorted — Be sure any other phones are not being used.

Call is noisy — Check to see if the cords are securely connected.

Can receive calls, but cannot make calls — Set **MODE** to the correct dialing mode, **P** or **T**.

No Caller ID information appears — You have not subscribed to Caller ID service with your phone company.

care and service

- Keep your phone dry; if it gets wet, wipe it dry immediately.
- Use and store your phone only in room temperature environments. Handle your phone carefully; do not drop it.
- Keep your phone away from dust and dirt, and wipe it with a damp cloth occasionally to keep it looking new.
- Modifying or tampering with your phone's internal components can cause a malfunction and might invalidate its warranty. If your phone is not performing as it should, take it to your local **RadioShack** store for assistance.

FCC statement

Your phone complies with Part 68 of *FCC Rules*. You must, upon receipt, provide the FCC registration number and the REN to your telephone company. Both numbers are on the bottom of the phone.

Note: You must not connect your phone to:

- coin-operated systems
- most electronic key telephone systems
- party-line systems

Connection to party line service is subject to state tariffs. Contact the state public utility commission, public service commission, or corporation commission for information.

We have designed your phone to conform to federal regulations, and you can connect it to most telephone lines. However, each phone (and each device, such as a telephone or answering machine) that you connect to the telephone line draws power from the telephone line. We refer to this power draw as the device's ringer equivalence number, or REN on the bottom of your phone.

If you use more than one phone or other device on the line, add up all of the RENs. If the total is more than five (three in rural areas), your telephones might not ring. If ringer operation is impaired, remove a device from the line.

In the unlikely event that your phone causes problems on the phone line, the phone company can temporarily discontinue your service. If this happens, the phone company attempts to notify you as soon as possible and advises you of your right to file a complaint with the FCC.

Also, the phone company can make changes to its lines, equipment, operations, or procedures that could affect the operation of this telephone. The telephone company notifies you of these changes in advance, so you can take the necessary steps to prevent interruption of your telephone service.

surge protection

Your telephone has built-in protection circuits to reduce the risk of damage from surges in telephone line and power line current. These protection circuits meet or exceed the FCC requirements. However, lightning striking the telephone or power lines can damage your telephone.

Lightning damage is not common. Nevertheless, if you live in an area that has severe electrical storms, we suggest that you unplug your phone when storms approach to reduce the possibility of damage.

limited one-year warranty

This product is warranted by **RadioShack** against manufacturing defects in material and workmanship under normal use for one (1) year from the date of purchase from **RadioShack** company-owned stores and authorized **RadioShack** franchisees and dealers. For complete warranty details and exclusions, check with your local **RadioShack** store.

RadioShack Customer Relations
300 RadioShack Circle, Fort Worth, TX 76102

04/04



Free Manuals Download Website

<http://myh66.com>

<http://usermanuals.us>

<http://www.somanuals.com>

<http://www.4manuals.cc>

<http://www.manual-lib.com>

<http://www.404manual.com>

<http://www.luxmanual.com>

<http://aubethermostatmanual.com>

Golf course search by state

<http://golfingnear.com>

Email search by domain

<http://emailbydomain.com>

Auto manuals search

<http://auto.somanuals.com>

TV manuals search

<http://tv.somanuals.com>