

AUVIO™

THE PERFORMANCE YOU NEED

7" High-Resolution Portable Digital TV

Package contents



TV



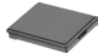
Remote control and battery



Car Power Adapter



User's Guide



Li-Poly Battery



AC Adapter

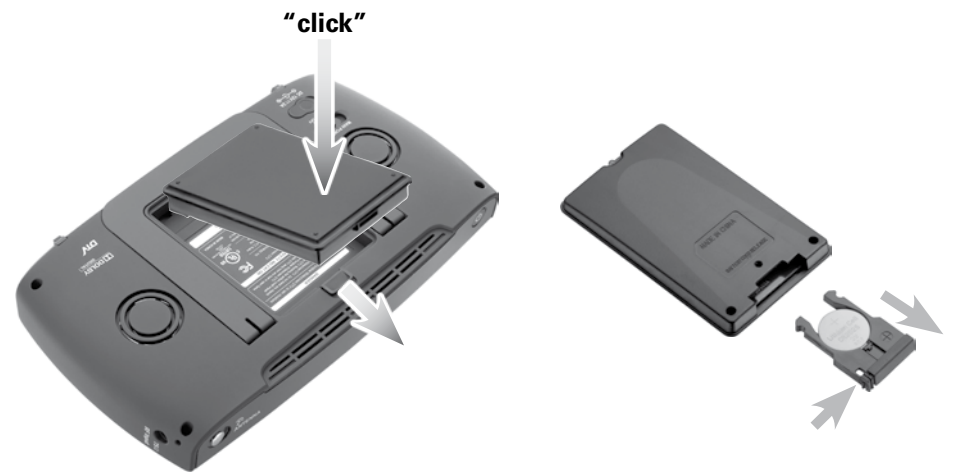


RF Connector

Quick Start

1

Install batteries



2

Connect to power

1. Connect to outlet or car power port using supplied adapters.



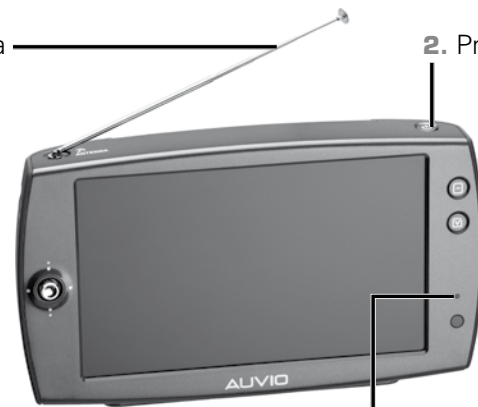
2. Slide **MAIN POWER** to **ON** (Standby mode)

3

Setup

1. Extend antenna

2. Press and hold

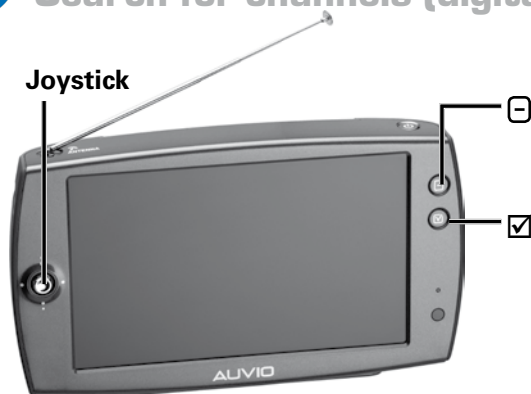


LED

- On while charging
- Off when not charging
- Blinks when entering standby

4

Search for channels (digital mode)



Joystick

1. Press .
2. Select **Ch. Search**
3. Press to confirm.
4. Press to select Auto.
5. Select **Rescan**.
6. Press to start.

Ch. Search



Notes:

- Make sure **TV Air** is selected.
- Digital mode only. Analog mode instructions are in the User's Guide.

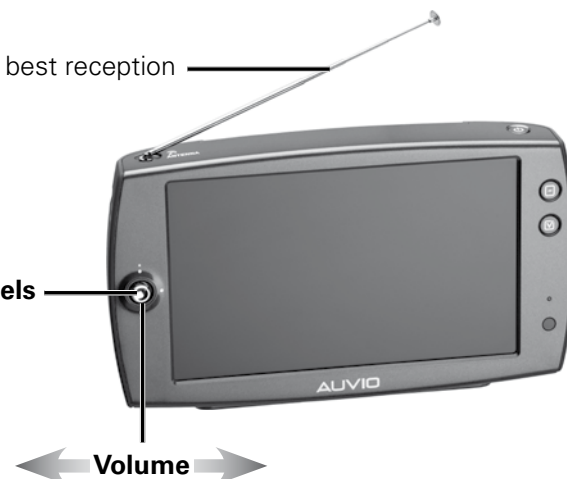
5

Watch TV

Adjust for best reception

Channels

Volume



Free Manuals Download Website

<http://myh66.com>

<http://usermanuals.us>

<http://www.somanuals.com>

<http://www.4manuals.cc>

<http://www.manual-lib.com>

<http://www.404manual.com>

<http://www.luxmanual.com>

<http://aubethermostatmanual.com>

Golf course search by state

<http://golfingnear.com>

Email search by domain

<http://emailbydomain.com>

Auto manuals search

<http://auto.somanuals.com>

TV manuals search

<http://tv.somanuals.com>