

# Samurai Racer

OWNER'S MANUAL — Please read before using this equipment.

Let your Samurai defend your right to be called King of the Road!

Your RadioShack Samurai Racer radio-controlled racing car can make you a winner! Built to  $1/8$  scale, it can reach speeds of up to 1,500 feet per minute! You can guide your racer almost anywhere using the digital speed and steering controls on its pistol-grip remote.

The Samurai Racer is available in four frequencies to let you race against other radio-controlled cars. Check your racer's box to see which frequency your Samurai Racer uses.

Its features include:

**Rugged Front/Rear Bumpers** — protect the Samurai Racer from high impact collisions.

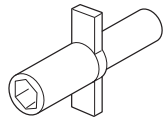
**Trailing Arm Suspension** — lets the racer quickly adjust to uneven road surfaces and continue to hold the course.

**Friction Damped Shock Absorbers** — give all four wheels positive traction, even on rough terrain.

**Rear Differential Axle** — transmits the necessary power to each rear wheel for sharper turns.

#### Supplied Box

**Wrench** — lets you easily remove and replace the racer's wheels. Be careful not to discard it when you unpack the racer.



## THE FCC WANTS YOU TO KNOW

Your racer or its transmitter might cause TV or radio interference even when it is operating properly. To determine whether the racer or transmitter is causing the interference, turn off the racer and the transmitter. If the interference goes away, your racer or transmitter is causing the interference. Try to eliminate the interference by:

- moving your racer and transmitter away from the TV or radio
- contacting your local RadioShack store for help

If you cannot eliminate the interference, the FCC requires that you stop using your Samurai Racer and its transmitter.

 **RadioShack**<sup>®</sup>

[www.radioshack.com](http://www.radioshack.com)<sup>™</sup>

© 2000 RadioShack Corporation. All Rights Reserved.  
RadioShack and RadioShack.com are trademarks  
used by RadioShack Corporation.

## INSTALLING BATTERIES

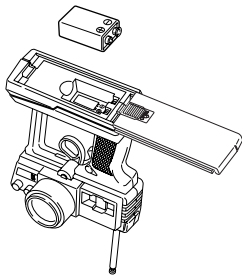
### Cautions:

- Use only a fresh battery and battery pack of the required size and recommended type.
- If you do not plan to use the Samurai Racer for several days, remove the battery from the transmitter and the battery pack from the racer. Batteries can leak chemicals that can damage electronic parts.
- Never leave a dead or weak battery in the transmitter or in the racer.
- Dispose of the battery and the battery pack promptly and properly; do not bury or burn them.

### In the Transmitter

The transmitter uses one 9-volt battery (not supplied). For the best performance and longest life, we recommend a RadioShack alkaline battery.

1. Slide the transmitter's **ON/OFF** switch to **OFF**.
2. Press down and slide the battery compartment's cover in the direction of the arrows marked on it.



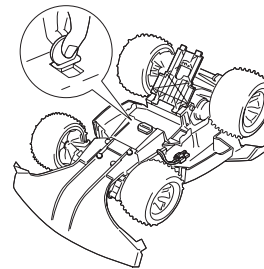
3. Put the battery in the compartment according to the polarity symbols (+ and -) marked inside.
4. Replace the cover and snap it shut.

When the transmitter's range decreases, replace its battery.

### In the Racer

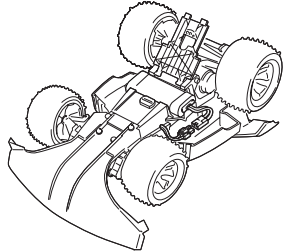
Your Samurai Racer requires a 7.2-volt rechargeable battery pack (not supplied). Before you can use the battery pack, you must charge it using a special battery charger. Both items are available at your local RadioShack store. Follow the charger's instructions to charge the battery pack. Then follow these steps to put the battery pack in the racer.

1. Slide the racer's **ON/OFF** switch on the driver's side (under the body) to **OFF**.
2. Use a coin to turn the battery compartment latch to **OPEN**, then slide the cover toward the rear wheels and lift it open.



3. Put the battery pack in the battery compartment. The battery pack's connector must be on the same side as the racer's matching connector.
4. Close the lid and snap it shut.

5. Attach the battery pack's connector to the racer's connector. Do not force them; they fit together only one way.



**Cautions:**

- Be sure the connectors and wires do not touch the Samurai Racer's moving parts.
- Use only the recommended battery pack and charger.
- Do not charge or recharge the battery pack while it is in the racer.
- After you charge or recharge the battery pack, disconnect it from the charger. Overcharging the battery pack could damage it.
- When you disconnect the battery pack from the charger, do not pull on the connector's wires. You might damage the battery pack.

**Notes:**

- If the Samurai Racer loses power or does not respond to the transmitter, recharge the battery pack.
- If you want to run your racer for extended periods of time, we suggest you purchase an extra battery pack. You can charge one while you use the other.
- Occasionally, let the battery pack fully discharge before recharging it. Otherwise, the battery pack loses its ability to fully charge.

**Important:** The EPA certified RBRC® Battery Recycling Seal on the nickel-cadmium (Ni-Cd) battery indicates RadioShack is voluntarily participating in an industry program to collect and recycle these batteries at the end of their useful life, when taken out of service in the United States or Canada. The RBRC program provides a convenient alternative to placing used Ni-Cd batteries into the trash or the municipal waste stream, which may be illegal in your area. Please call 1-800-THE-SHACK (1-800-843-7422) for information on Ni-Cd battery recycling and disposal bans/restrictions in your area. RadioShack's involvement in this program is part of the company's commitment to preserving our environment and conserving our natural resources.



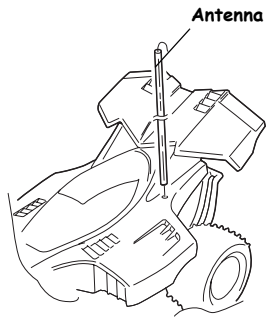
## CONNECTING THE ANTENNAS

### Attaching the Transmitter's Antenna

Screw the antenna's threaded end into the transmitter's antenna connector. Make sure the connection is tight.

### Installing the Antenna Tube

The antenna tube holds up the racer's antenna wire for the best reception and range. Route the antenna wire's loose end through the tube. Then insert the tube securely into the racer's antenna tube holder.



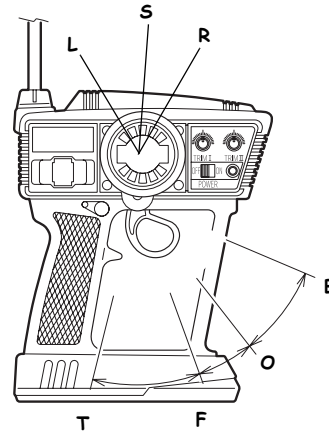
## DRIVING THE SAMURAI RACER

### Warnings:

- This racer can reach much higher speeds than many other radio-controlled cars. Be careful to avoid high-speed collisions with people and objects.
- Do not play with your racer in the street.

1. Extend the transmitter's antenna to its full length.
2. Slide the **ON/OFF** switches on the transmitter and racer to **ON**.

3. Use the transmitter's trigger and wheel to drive and steer the Samurai Racer.



### Speed Control Trigger

- Pull the trigger to the left to move forward (**F**).
- Pull all the way for maximum speed (**T**).
- Push the trigger to the right to move backward (**B**).
- Release to stop (**O**).

### Steering Control Wheel

- Rotate left to turn left (**L**).
- Rotate right to turn right (**R**).
- Release to go straight (**S**).

**Caution:** If the Samurai Racer gets stuck under an object, immediately release the transmitter's trigger and wheel and retrieve the racer.

4. When you finish playing with the Samurai Racer, slide the **ON/OFF** switches on the racer and the transmitter to **OFF**.

**Warning:** Do not touch the motor immediately after using the racer, as it will become hot during use.

**Caution:** Running your racer continuously for long periods generates high heat levels. Heat causes the most wear and tear on the motor. To help keep heat levels down, when your racer's battery pack dies, let the racer cool for at least 10 minutes before installing a new or newly charged battery pack.

## ADJUSTING THE TRIM CONTROLS

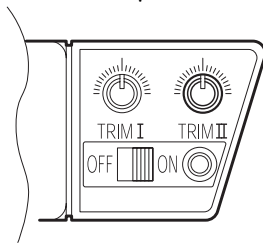
The neutral trim control (**TRIM II**) lets you fine-tune the speed control so the racer completely stops when you release the speed control to its center position.

The steering trim control (**TRIM I**) lets you fine-tune the steering so the racer drives in a straight line when you set the steering control to its center position.

1. Place the racer on a block or turn it over so the tires do not touch the ground.

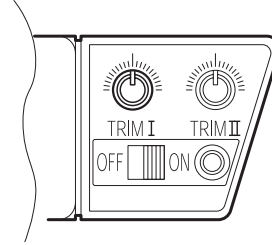
**Note:** Do not touch the tires during this adjustment.

2. Slide the **ON/OFF** switches on the transmitter and racer to **ON**.
3. If the rear tires move, turn **TRIM II** until the tires stop.



**Caution:** Never set **TRIM II** to make the racer continually move.

4. If the front tires angle left or right, turn **TRIM I** point directly forward.



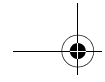
5. When you finish the adjustment, slide the **ON/OFF** switches on the transmitter and the racer to **OFF**.

**Note:** You might have to further fine-tune **TRIM I** after using the racer for awhile.

## RACING TWO OR MORE CARS TOGETHER

The Samurai Racer and other radio-controlled cars use specific frequencies to operate. Cars with different control frequencies can race together without interference. Cars with the same frequency cannot. The following chart shows the control frequencies available for your racer. If you buy more than one racer and you plan to race them, check the stickers on the boxes to be sure they are different band numbers/colors (for different frequencies).

Band	Frequency (MHz)	Sticker Color
1	26.995	Brown
2	27.045	Red
3	27.095	Orange
5	27.195	Green



## CARE

Keep the Samurai Racer dry; if it gets wet, wipe it dry immediately. Use and store the Samurai Racer only in normal temperature environments. Handle the Samurai Racer carefully; do not drop it. Keep the Samurai Racer away from dust and dirt, and wipe it with a damp cloth occasionally to keep it looking new.

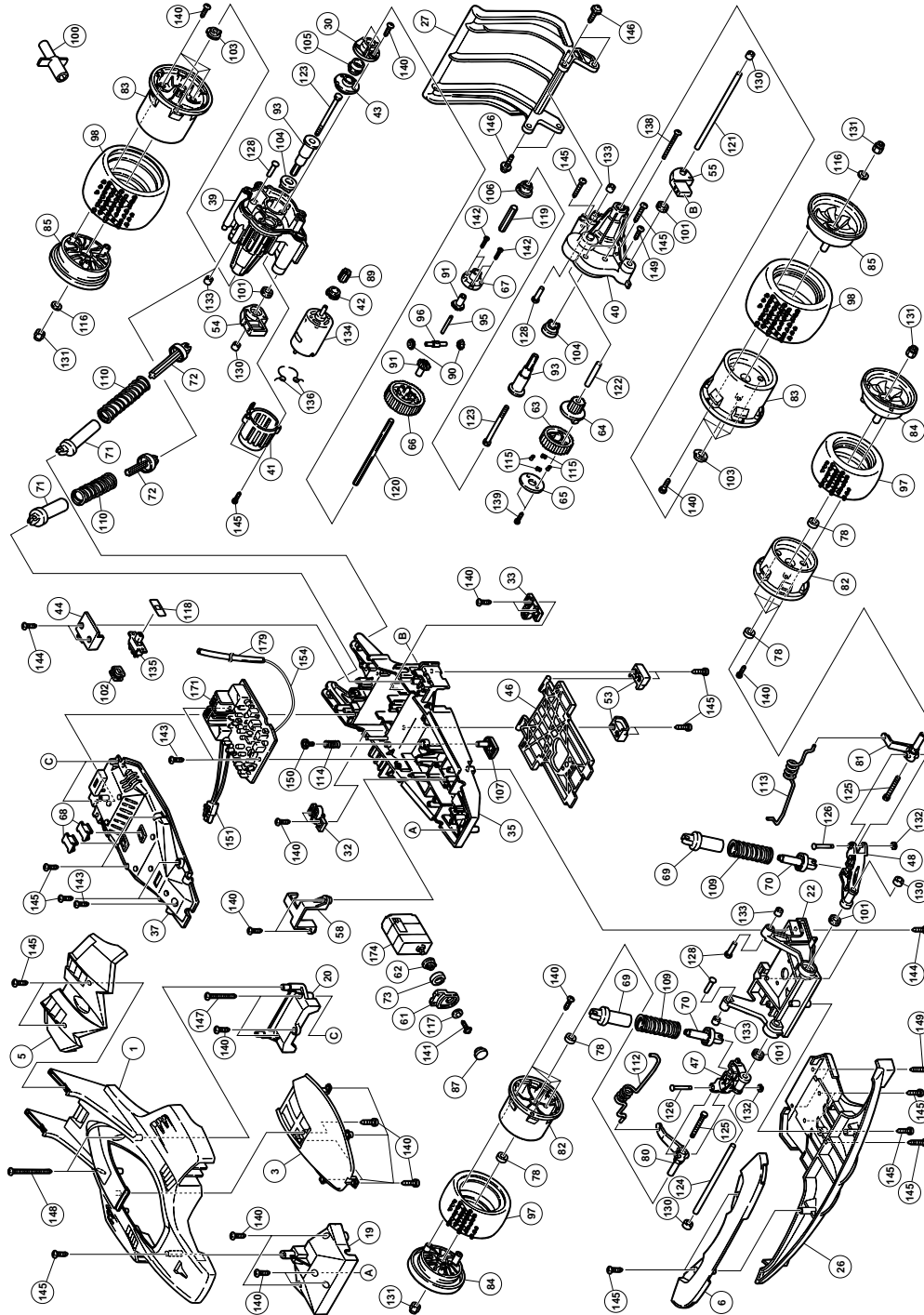
Modifying or tampering with the Samurai Racer's internal components can cause a malfunction and might invalidate its warranty and void your FCC authorization to operate it. If your Samurai Racer is not performing as it should, take it to your local RadioShack store for assistance.

## Helpful Hints

These hints can help you get the most enjoyment from your Samurai Racer.

- If someone uses a CB nearby, it might interfere with control of the racer. If this happens, move the racer and transmitter away from the CB. Interference can also come from overhead high-voltage wires and power transformers.
- If the Samurai Racer moves slowly and you have installed a fully charged battery pack, check the wheel mechanisms for lint, thread, hair or dust.

# USER-REPLACEABLE PARTS



## User-Replaceable Parts List

You can order replacement parts for your racer at your local RadioShack store. Simply identify the part(s) you need from the exploded view on Page 7, then find the part number in this list.

RSU #	Set	Ref #	Description
12266664	Body Set	1 3 5 140 145 186	Body Windshield Wing 6 Tapping Screws (3x10, white) 2 Tapping Screws (3x12, black) Sticker
12267910	Front Bumper Set	6 26 145 149 186	Front Wing Front Bumper 6 Tapping Screws (3x12, black) 2 Tapping Screws (3x16, black) Sticker
12267928	Front Tire	97	Front Tire
12267936	Front Wheel Set	82 84 131 140	Front Wheel Front Wheel Cap Nylon Nut (M4, white) 3 Tapping Screws (3x10, white)
12266672	Rear Tire	98	Rear Tire
12266680	Rear Wheel Set	83 85 116 140	2 Rear Wheels 2 Rear Wheel Caps Plain Washer (10Dx4.2dx0.8t) 3 Tapping Screws (3x10, white)
12275871	Power Motor Set	42 89 134 136	Motor Bush Pinion Gear Motor 2 Ceramic Capacitors
12051678	Battery Lid Set	46 53 145	Battery Lid 2 Battery Lid Holders 4 Tapping Screws
11942158	Suspension Set	69 70 71 72 109 110	2 Front Dampers (Upper) 2 Front Dampers (Lower) 2 Rear Dampers (Upper) 2 Rear Dampers (Lower) 2 Compression Springs (#1.2x#15.0Dx11Tx44L) 2 Compression Springs (#1.2x#15.0Dx13Tx55L)



RSU #	Set	Ref #	Description
12269494	Upright Set	78 80 81 125 126 132	4 Front Wheel Bearings Upright (Right) Upright (Left) 2 Hexagon Head Screws (M4x27, white) 2 Rivets, With Groove (3x22.5L) 2 Retaining Rings (E Type)
10537710	Transmitter Antenna	*	Transmitter Antenna
10681781	Antenna Tube Set	179	5 Antenna Tubes
10676443	Box Wrench	100	Box Wrench

\*Not shown in exploded view

## Unavailable Parts

The parts listed below cannot be purchased for replacement. You must have these parts replaced by your RadioShack repair center.

Ref. No.	Part Name
19	Front Body Mount
20	Rear Body Mount
22	Front Suspension Mount
27	Rear Bumper
30	Bearing Holder
32	Rear Sus. Pivot Holder (Right)
33	Rear Sus. Pivot Holder (Left)
35	Chassis
37	Chassis Cover
39	Gear Box (Right)
40	Gear Box (Left)
41	Motor Cover
43	Bulkhead
44	Switch Cover
47	Front Suspension Arm (Right)
48	Front Suspension Arm (Left)
54	Rear Suspension Pivot (Right)
55	Rear Suspension Pivot (Left)
58	Servo Holder
61	Servo Horn
62	Servo Saver Mount
63	Counter Gear (A)
64	Counter Gear (B)
65	Counter Gear Cover
66	Ring Gear
67	Differential Housing
68	Crystal Hole Cover
73	Servo Saver Spring
87	Servo Horn Stopper
90	Planetary Gear
91	Differential Side Gear
93	Joint Shaft
95	Shaft (2x18L)
96	Spider

Ref. No.	Part Name
101	Friction Rubber
102	Packing Rubber
103	Bearing (A)
104	Bearing (B)
105	Bearing (C)
106	Bearing (D)
107	Battery Lid Stopper
112	Tie-Rod (Right)
113	Tie-Rod (Left)
114	Compression Spring
115	Compression Spring
117	Plain Washer (6Dx2.2dx0.3t)
118	Switch Cover
119	Hexagon Shaft (5x23L)
120	Hexagon Shaft (5x86.5L)
121	Shaft (5x102L)
122	Shaft (5x34L)
123	Hexagon Head Screw (M4x10x39, White)
124	Shaft (5x132.5L)
128	Rivet (4x21L)
130	Round Bush
133	Round Bush
135	Switch
138	Screw (M3x25, White)
139	Tapping Screw (2x8, White)
141	Tapping Flange Screw (2x12, White)
142	Tapping Screw (2x12, White)
143	Tapping Screw (3x12, White)
144	Tapping Screw (3x10, Black)
146	Tapping Flange Screw (3x14, Black)
147	Tapping Screw (3x24, White)
148	Tapping Screw (3x35, Black)
150	Tapping Flange Screw (3x8, White)
151	Connector
154	Receiver Antenna Wire
171	Receiver PCB
174	Servo

### Limited Ninety-Day Warranty

This product is warranted by RadioShack against manufacturing defects in material and workmanship under normal use for ninety (90) days from the date of purchase from RadioShack company- owned stores and authorized RadioShack franchisees and dealers. EXCEPT AS PROVIDED HEREIN, RadioShack MAKES NO EXPRESS WARRANTIES AND ANY IMPLIED WARRANTIES, INCLUDING THOSE OF MERCHANTABILITY AND FITNESS FOR A PARTICULAR PURPOSE, ARE LIMITED IN DURATION TO THE DURATION OF THE WRITTEN LIMITED WARRANTIES CONTAINED HEREIN. EXCEPT AS PROVIDED HEREIN, RadioShack SHALL HAVE NO LIABILITY OR RESPONSIBILITY TO CUSTOMER OR ANY OTHER PERSON OR ENTITY WITH RESPECT TO ANY LIABILITY, LOSS OR DAMAGE CAUSED DIRECTLY OR INDIRECTLY BY USE OR PERFORMANCE OF THE PRODUCT OR ARISING OUT OF ANY BREACH OF THIS WARRANTY, INCLUDING, BUT NOT LIMITED TO, ANY DAMAGES RESULTING FROM INCONVENIENCE, LOSS OF TIME, DATA, PROPERTY, REVENUE, OR PROFIT OR ANY INDIRECT, SPECIAL, INCIDENTAL, OR CONSEQUENTIAL DAMAGES, EVEN IF RadioShack HAS BEEN ADVISED OF THE POSSIBILITY OF SUCH DAMAGES.

Some states do not allow limitations on how long an implied warranty lasts or the exclusion or limitation of incidental or consequential damages, so the above limitations or exclusions may not apply to you.

In the event of a product defect during the warranty period, take the product and the RadioShack sales receipt as proof of purchase date to any RadioShack store. RadioShack will, at its option, unless otherwise provided by law: (a) correct the defect by product repair without charge for parts and labor; (b) replace the product with one of the same or similar design; or (c) refund the purchase price. All replaced parts and products, and products on which a refund is made, become the property of RadioShack. New or reconditioned parts and products may be used in the performance of warranty service. Repaired or replaced parts and products are warranted for the remainder of the original warranty period. You will be charged for repair or replacement of the product made after the expiration of the warranty period.

This warranty does not cover: (a) damage or failure caused by or attributable to acts of God, abuse, accident, misuse, improper or abnormal usage, crash, collision, impact, violent contact, failure to follow instructions, improper installation or maintenance, alteration, lightning or other incidence of excess voltage or current; (b) any repairs other than those provided by a RadioShack Authorized Service Facility; (c) consumables such as fuses or batteries; (d) cosmetic damage; (e) transportation, shipping or insurance costs; or (f) costs of product removal, installation, set-up service adjustment or reinstallation.

This warranty gives you specific legal rights, and you may also have other rights which vary from state to state.

RadioShack Customer Relations, 200 Taylor Street, 6th Floor, Fort Worth, TX 76102

*We Service What We Sell*

12/99

RadioShack Corporation  
Fort Worth, Texas 76102

60-4274  
07A00  
Printed in Malaysia

## Free Manuals Download Website

<http://myh66.com>

<http://usermanuals.us>

<http://www.somanuals.com>

<http://www.4manuals.cc>

<http://www.manual-lib.com>

<http://www.404manual.com>

<http://www.luxmanual.com>

<http://aubethermostatmanual.com>

Golf course search by state

<http://golfingnear.com>

Email search by domain

<http://emailbydomain.com>

Auto manuals search

<http://auto.somanuals.com>

TV manuals search

<http://tv.somanuals.com>