



Okidata C6100 Setup & User Guide

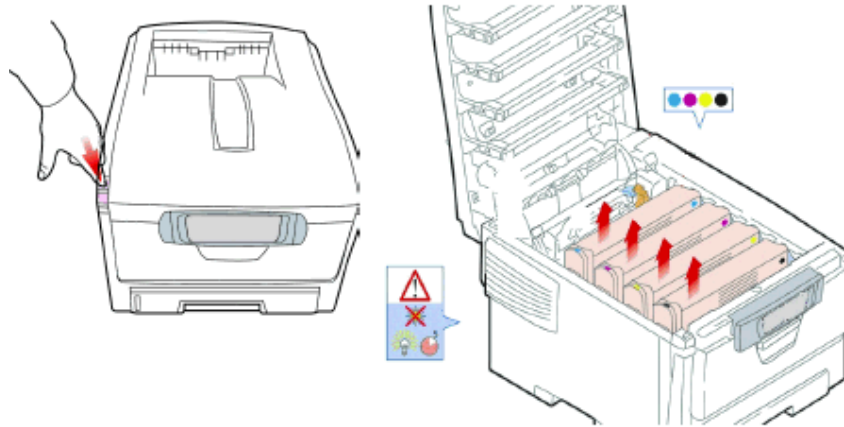


Table of Contents -

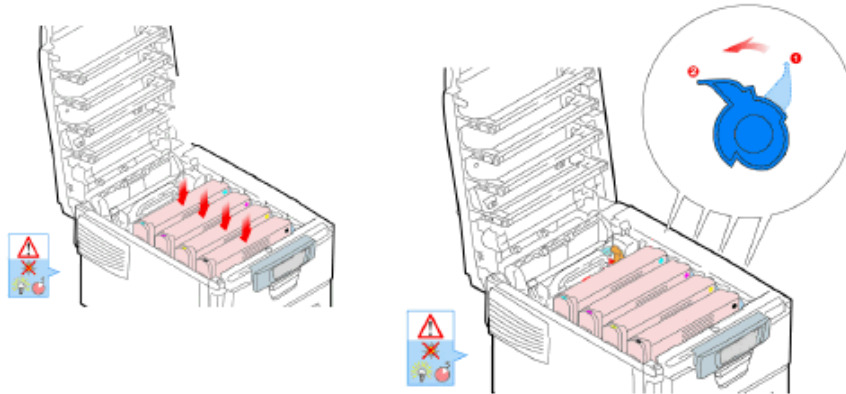
<i>STEP 1- UNPACK/PREPARE PRINTER</i>	2
<i>STEP 2 – PRINT DEMO PAGE</i>	4
<i>STEP 3 - INSTALL HANDY REFERENCE GUIDE</i>	4
<i>STEP 4 - DISCONNECT CURRENT PRINTER</i>	5
<i>STEP 5 - CONNECT NEW PRINTER/LOAD SOFTWARE</i>	5
<i>WINDOWS NETWORK SETUP</i>	5
<i>PRINT IN BLACK AND WHITE</i>	10
<i>CHECK TONER LIFE</i>	10
<i>REPLACE TONER CARTRIDGE</i>	11
<i>REPLACE DRUM</i>	14
<i>REPLACE FUSER</i>	18
<i>CHECK CURRENT PRINTER SETTINGS</i>	20
<i>RESET FACTORY DEFAULTS</i>	21
<i>SERVICE AND SUPPORT</i>	21
<i>ORDER SUPPLIES</i>	21
<i>DIAGRAM - FRONT VIEW</i>	22
<i>DIAGRAM - REAR VIEW</i>	23

Step 1 – Unpack / Prepare Printer

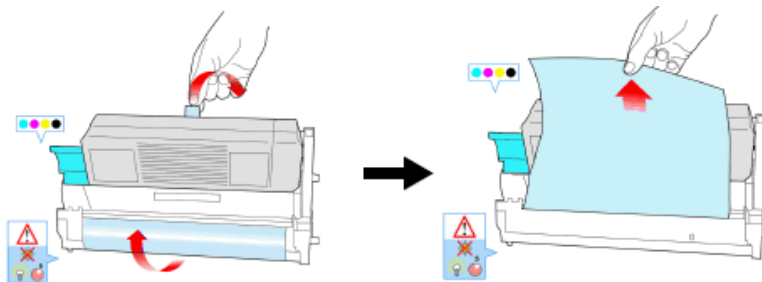
1. Designate an area for your new printer to be installed.
2. Ask someone to assist in lifting the printer out of the box.
3. Lift the printer out of the box (straight up).
4. Remove all pieces of tape from the printer. (11 sheets with tape) (6 single pieces of tape)
5. Follow the instructions below to remove tape from the inside of the printer:



- Press the release button and lift the top cover.
- On the right-hand side of each drum/toner cartridge, you will see a blue lock lever. The lock lever will keep the toner from leaking out when you remove the drum/toner cartridge from the printer. Push the lever toward the back of the printer as far as it will go (for each drum/toner cartridge).



- Lift the black image drum/toner unit out of the printer.
- Remove the pieces of tape and sheets.

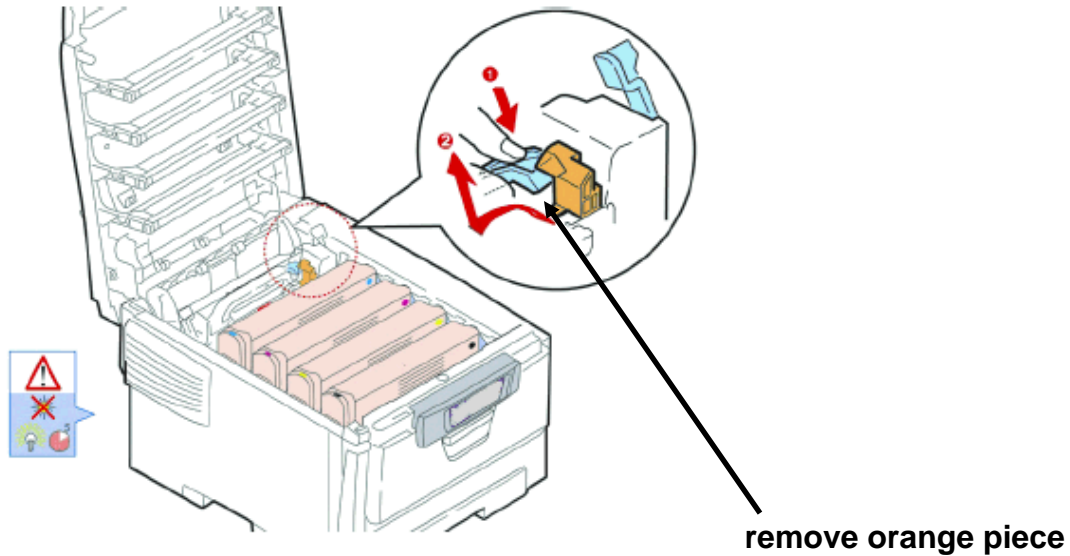


Caution! Do not touch the image drum's shiny green surface. Do not expose the drum to direct sunlight.

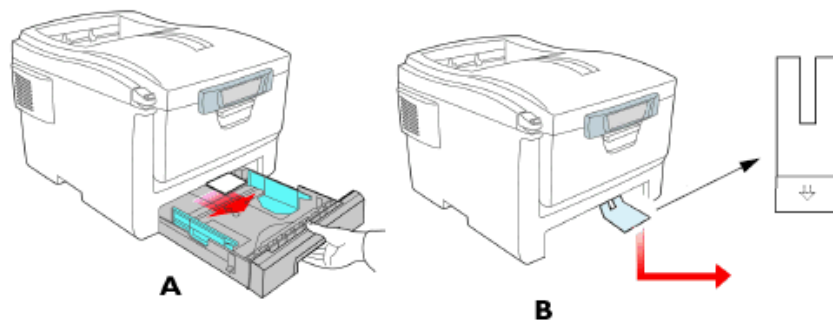
- Reinstall the black drum/toner unit.
- Repeat these steps for all remaining drum/toner units.

Important! If TONER SENSOR ERROR appears when you turn on the printer, the lever for the toner cartridge color indicated is not pushed all the way back.

6. Follow the steps below to prepare the fuser:



- Press firmly on the blue lock (1) to release the orange transport restraint (2). Pull the restraint out by moving it left and then pulling up. This piece looks as though it is a permanent part of the printer, but is not.
 - After the orange restraint piece has been removed, take out the orange band and close the top cover.
 - All orange pieces should be thrown away.
 - Lock the fuser into place by pushing the lever toward the back of the printer.
7. Follow the instructions below to load the paper tray:

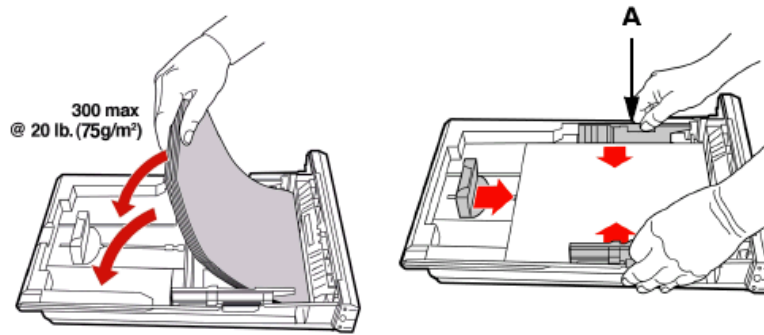


- Pull out the paper tray (A).
- Carefully pull the shipping restraint down, and out (B).

Important! Be sure you remove the entire piece, including both arms.

- Use both hands to pull the front cover down and flip the paper tray out. Remove the pieces of tape and sheet.

- Load the paper (maximum 300 sheets 20-lb [75 g/m²] paper).
- Make sure the paper guides are snug against the paper and are locked in place.



Note: Do not fill above paper full indicator (A).

- Gently close the paper tray.
8. Insert the power cable (**1: Be sure to use only the power cable supplied with your printer!**), then plug it directly into a grounded wall outlet and turn on the printer.
 9. Do not connect any other cables at this time.

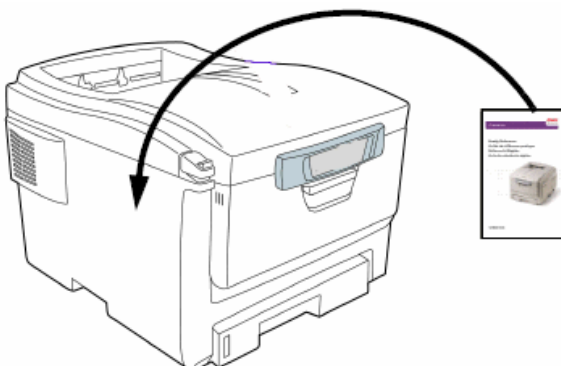
Step 2 – Print Demo Page



1. Press **+** one or more times until you see: **INFORMATION MENU** on the first line of the display.
2. Press **ENTER**.
3. Press **-** or **+** one or more times until you see **DEMO1** on the first line of the display.
4. Press **ENTER**. The demo page will print and the printer will go back online.

Step 3 – Install Handy Reference Guide

1. Remove the backing from the VELCRO® strip on the back of the Handy Reference Guide and mount it on the side of the printer.



Step 4 – Disconnect Current Printer (If one exists)

1. Press the power button to turn off the printer.
2. Disconnect the power cable from the power outlet and from the printer.

Step 5 - Connect New Printer / Load Software

For this portion, refer to the diagram provided on page 20. (Diagram – Rear View)

- Place the printer in its designated area.
- Connect the power cord to a power outlet. When possible, connect the (C6100) power cord to a dedicated power outlet.

NOTE: It is recommended that you use the power cord shipped with the printer.

Windows Network Setup

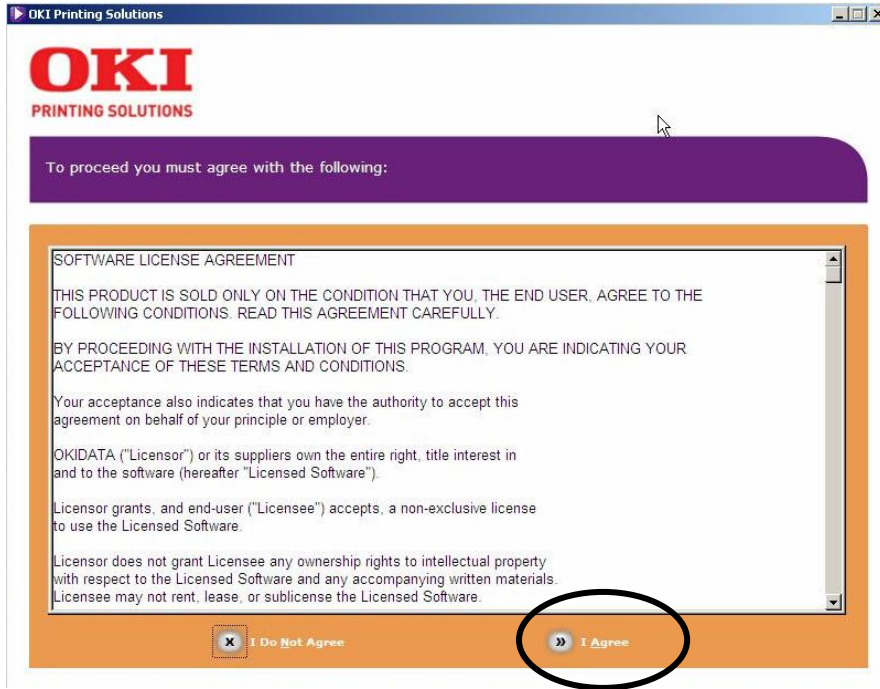
1. Turn the printer OFF.
2. Remove the plastic cap from the LAN port (1).
3. Connect the Ethernet cable between the printer and a spare port on the Ethernet hub or router.



3. Turn the Printer ON and wait for the status light (2) to stop blinking.
4. Insert the CD in the CD-ROM drive. The CD will auto-run. If it doesn't, click **Start > Run > Browse**. Browse to your CD-ROM drive, double-click **Setup.exe**. Click **OK**.
5. Select your language:

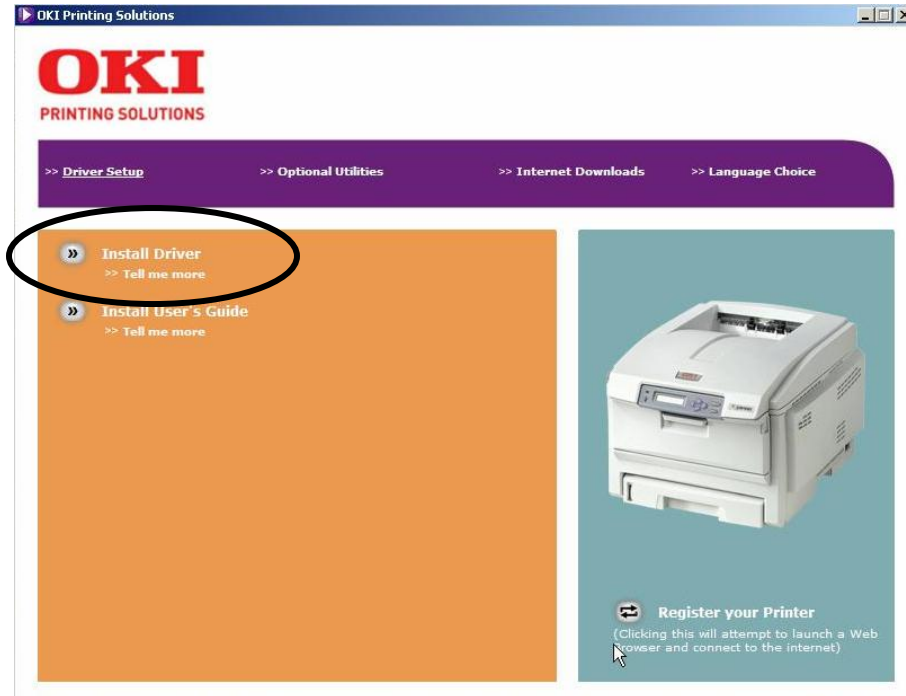


6. Next, if you agree, accept the License Agreement:

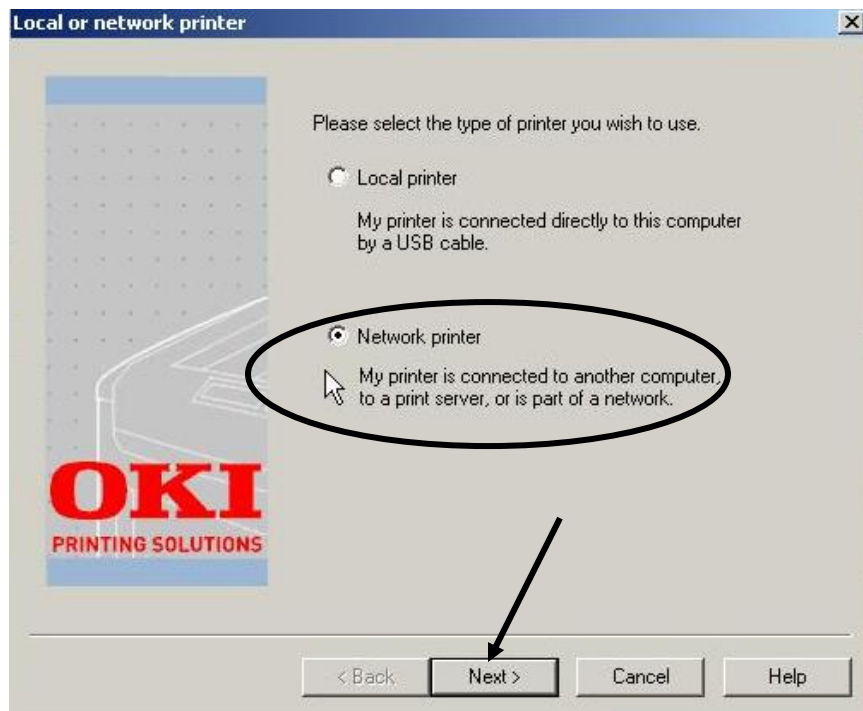


The Installer screen will appear:

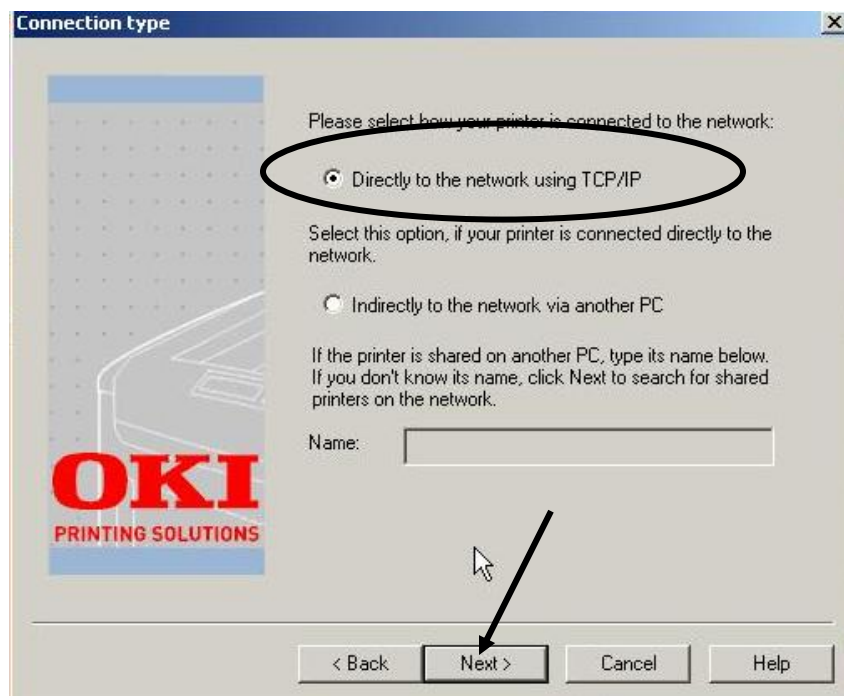
7. Click **Install Driver**.



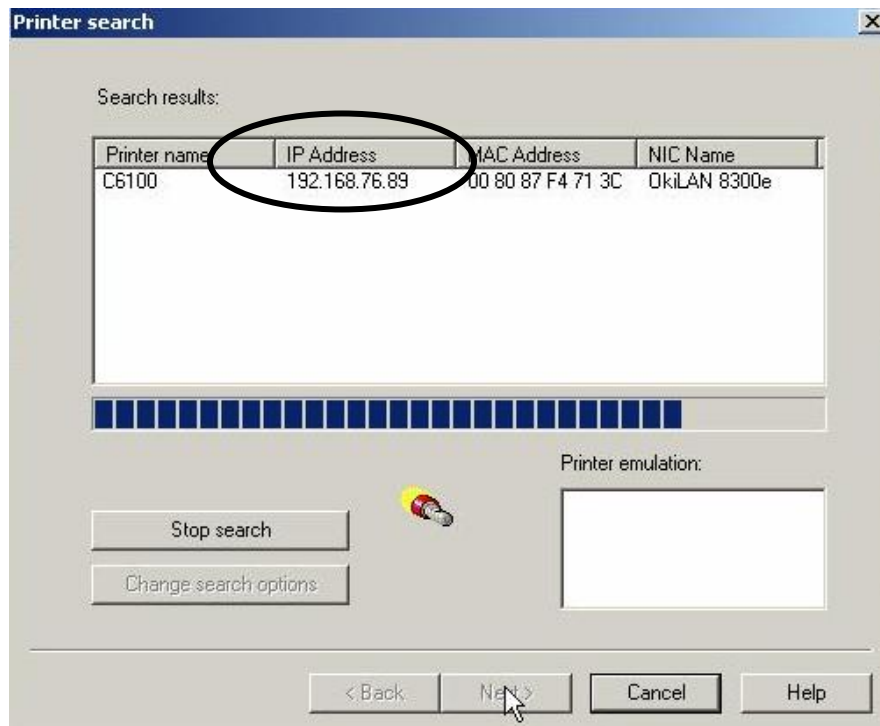
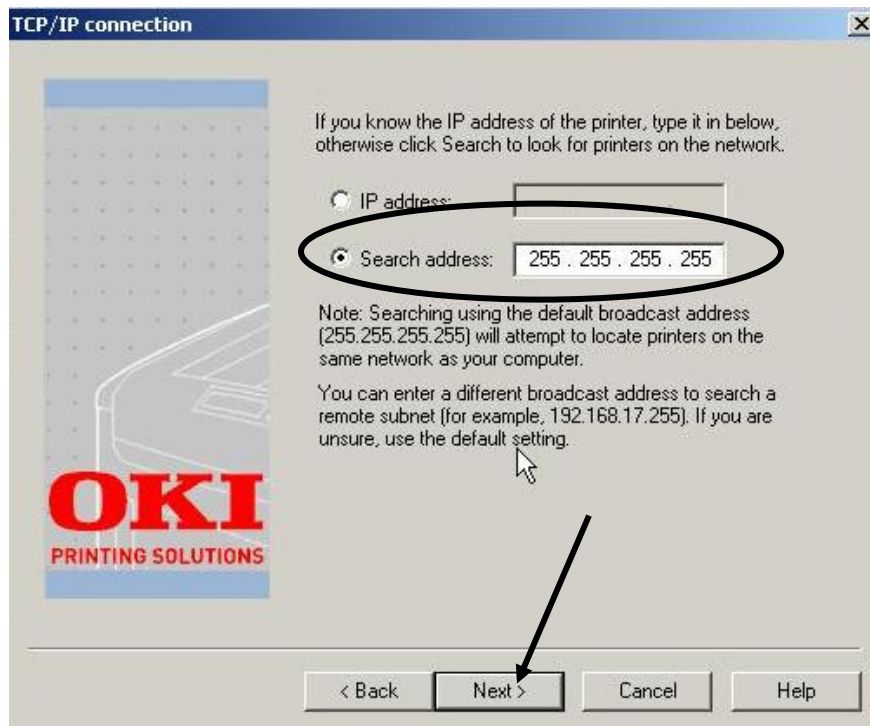
8. Select **Network printer** and click **Next**:



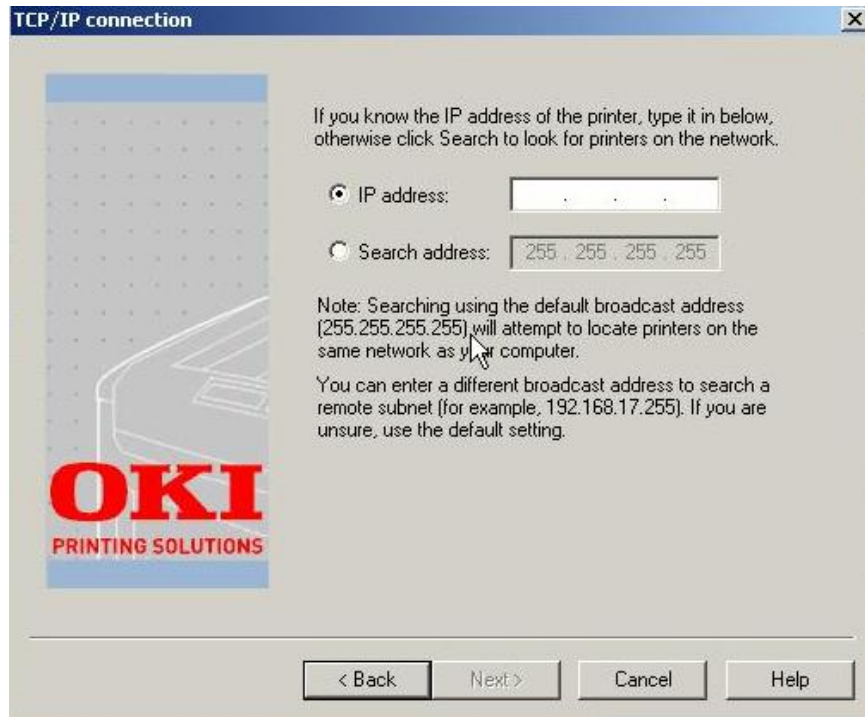
9. Use the mouse to select '**Directly to the network using TCP/IP**'. Click **Next**.



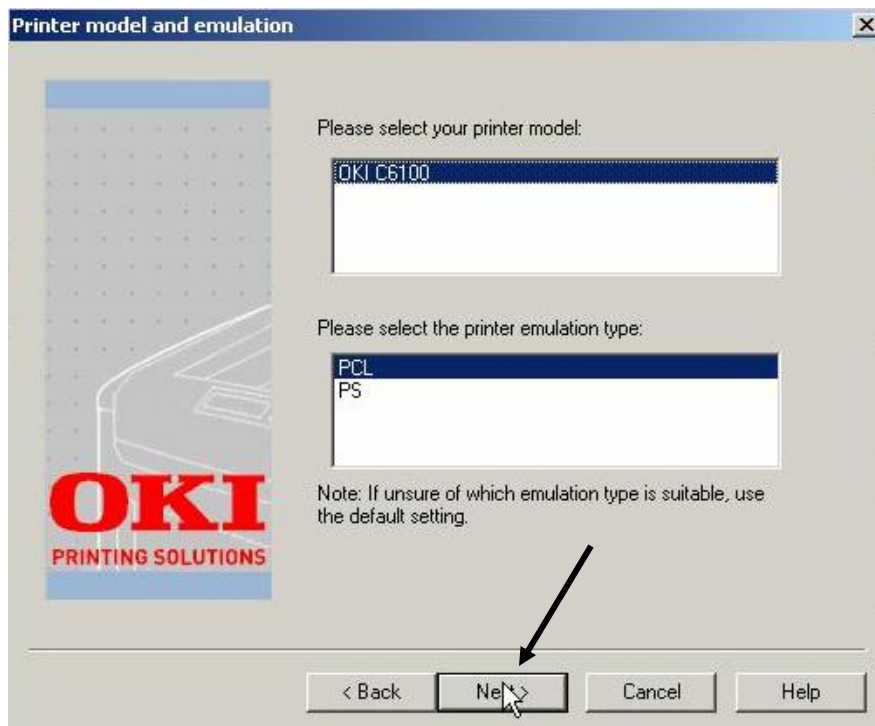
10. If you know the IP address for the printer, use the mouse to select IP address and enter the number. If you do not know the IP address for your printer, click **Next** to browse for it.



11. Click the **Back** button to get to the IP address entry screen:



12. Enter the IP address and click **Next**. Note – use the tab key to enter IP address.



13. Use the mouse to click **PCL**, and then click **Next**.

Drivers will be installed and you will see the following:



14. Use the mouse to click **Finish**, and exit out of any open Okidata screens.
15. To make sure the printer driver was installed correctly, print a page from any program. Reinstall the driver if the installation failed.

Print Only in Black and White:

- Click **Start > Settings > Printers and Faxes**.
- Left click on **Laser** to highlight.
- Click **File > Printing Preferences**.
- Click on the **Color** tab.
- Click on the circle by **Grayscale** to move the bullet to that selection.
- Click **Apply** and **OK**.

Check Toner Life

The Okidata C6100 Printer has the ability to display the remaining life of each toner cartridge.

- Press the **<+>** button until you see **USAGE MENU**.
- Press the **ENTER** button.
- Press the **<+>** button until you see the toner cartridge:
 - ~ K toner remaining - xx% (Black)
 - ~ C toner remaining - xx% (Cyan)
 - ~ M toner remaining - xx% (Magenta)
 - ~ Y toner remaining - xx% (Yellow)
- After you have checked the life percentage, press the **BACK** button until **<ONLINE>** is displayed.

Replace a Toner Cartridge

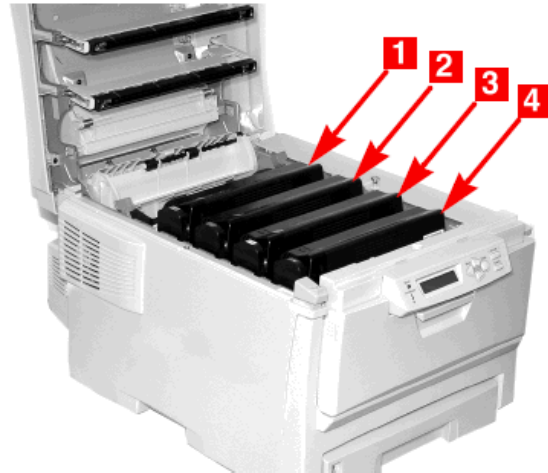


1. Press the cover release. Open the top cover.

WARNING! If the printer has been powered on, the fuser is HOT. This area is clearly labeled. Do not touch it.

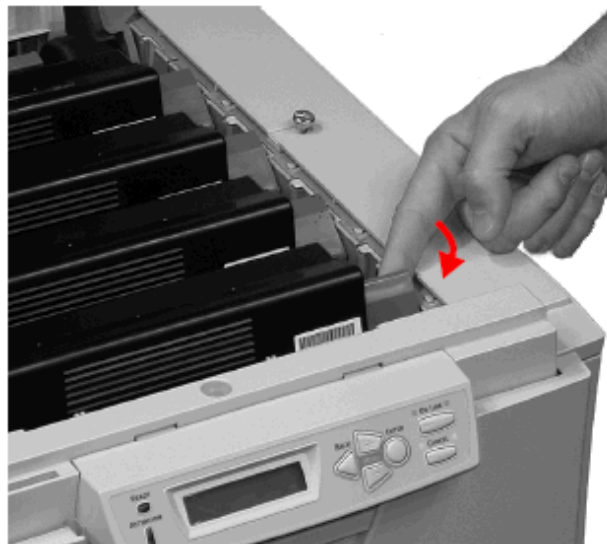


2. Note the positions of the four cartridges:
Cyan (1) Magenta (2) Yellow (3) Black (4).



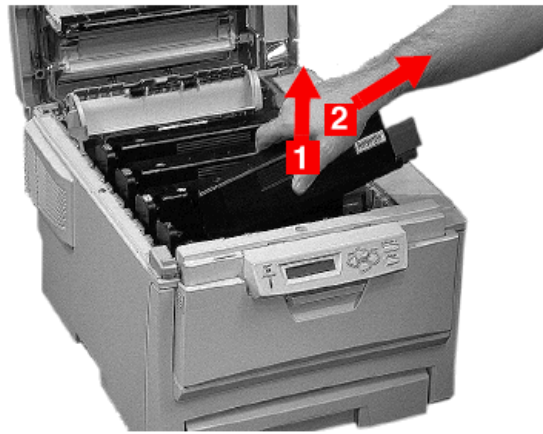
3. Pull the colored toner release lever on the cartridge to be placed towards the front of the printer.

Shown: placement of the black toner cartridge



4. Lift the right-hand end of the cartridge. Then, pull the cartridge to the right to release the left-hand end.

Remove the toner cartridge. Discard it in accordance with your local regulations.



5. Unpack the new toner cartridge. Gently shake it from side to side to loosen and distribute the toner evenly inside the cartridge.

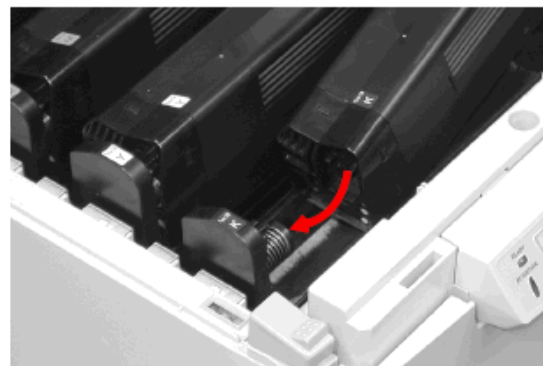
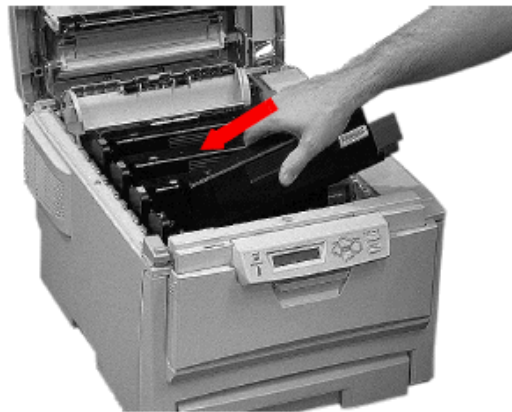


6. Remove the adhesive tape from the underside of the cartridge.

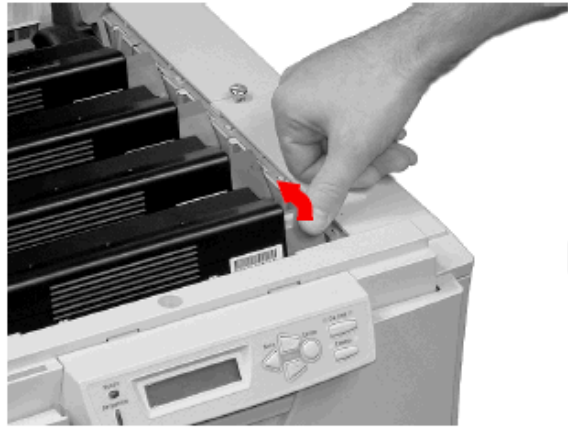
CAUTION! Do not touch the toner release lever until the toner cartridge is installed in the image drum. If you do, it will open the toner release slot and spill toner.



- Hold the cartridge by its top center with the colored release lever to the right.
- Insert the left end of the cartridge into the top of the image drum.
- Push it firmly against the spring on the drum unit.



- 8.
- Lower the right end of the cartridge into the image drum unit.
 - Press it firmly down in place.
 - Then, push the colored lock lever back to open the toner slot and lock it in place.



Important! The lever should move easily. If it does not, STOP!

Push down on the toner cartridge to be sure that it is properly seated in the image drum. Press back on the lever again.

To avoid toner spillage, DO NOT open the toner release lever until the toner cartridge is firmly seated in the image drum.

9. Use the provided LED lens cleaner. Gently wipe the LED.



10. Close and latch the top cover.



Replace an Image Drum

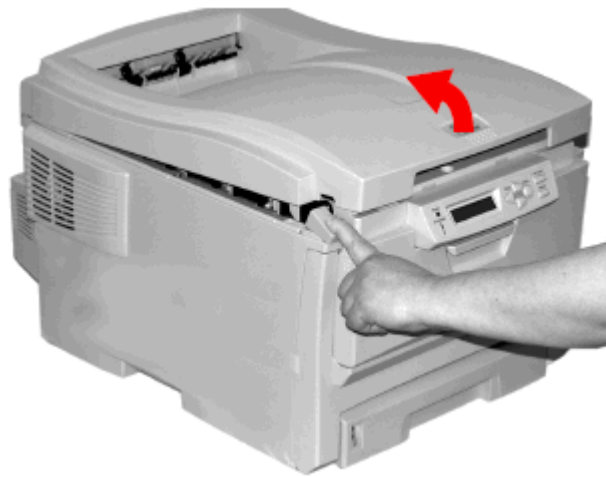
Important!

You must replace the toner cartridge when you replace the image drum. The life expectancy of the cartridge will be reduced as the toner charges the new drum.

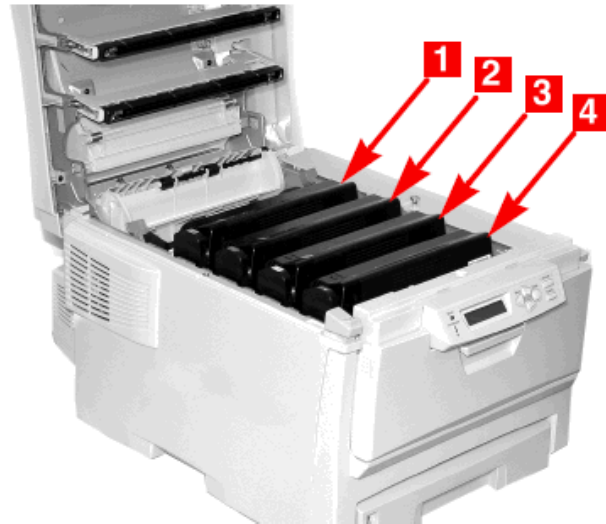


1. Press the cover release and open the top cover.

WARNING! If the printer has been powered on, the fuser is **HOT**. This area is clearly labeled. Do not touch it.



2. Note the positions of the four image drums: Cyan (1) Magenta (2) Yellow (3) Black (4).

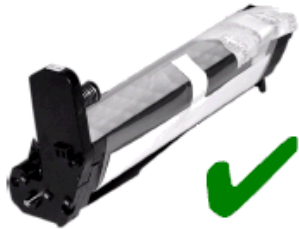


3. Unpack the new image drum.

CAUTION!

Image drum handling

The image drum contains toner. To avoid spilling toner, be careful to *keep it upright*.



CAUTION!

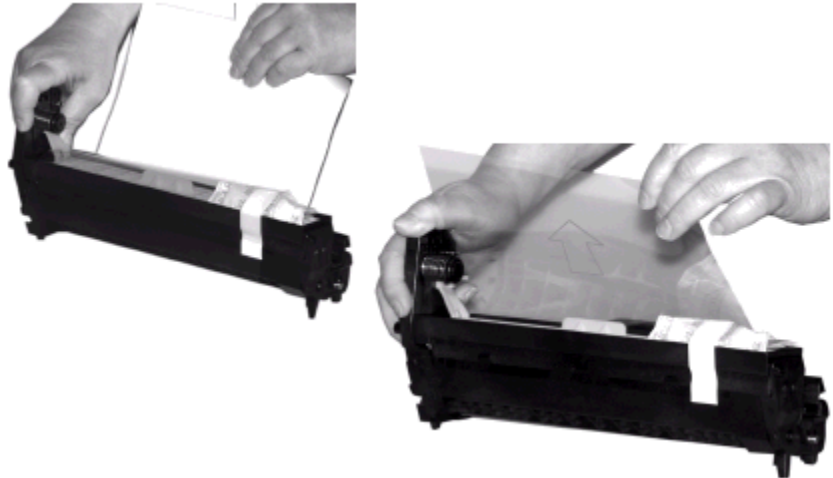
The green surface at the base of each image drum is very delicate and light sensitive.

- Do not touch the green surface.
- Never expose the drum to direct sunlight or to very bright room lighting.
- Do not expose it to normal room light for more than 5 minutes.
- If the image drum must be out of the printer for longer than 5 minutes, place the image drum inside a black plastic bag or carefully place it in a drawer or cabinet to keep it away from light.

5. Grasp the white tape tab and peel the tape off the drum.



6. Remove the paper sheet. Then, remove the clear plastic film.



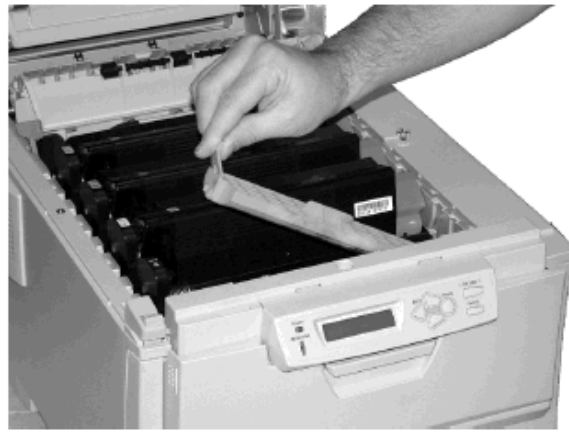
7. If present, remove the silica gel pack.



8. Place the image drum in the printer.



9. Remove the orange drum seal.



10. Install the new toner cartridge in the image drum.



11. Use the provided LED lens cleaner. Gently wipe the LED.



12. Close and latch the top cover.



Replace the Fuser

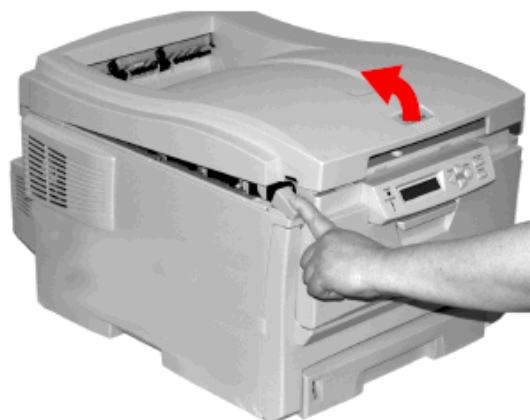


WARNING!

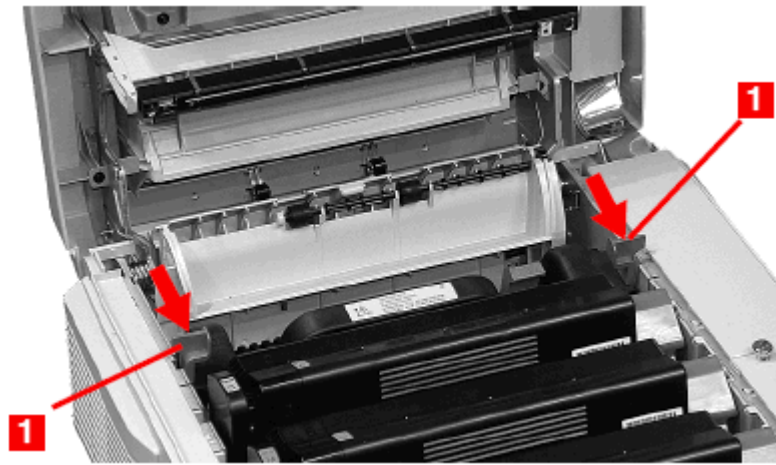
If the printer has been powered on, the fuser is HOT. This area is clearly labeled. Do not touch it. Handle the fuser with extreme care. Hold it only by its handle, which is only mildly warm to the touch.

If in doubt, switch the printer off. Wait at least 10 minutes for the fuser to cool before opening the printer cover.

1. Press the cover release and open the top cover.



2. Pull the two blue fuser lock levers (1) towards the front of the printer.

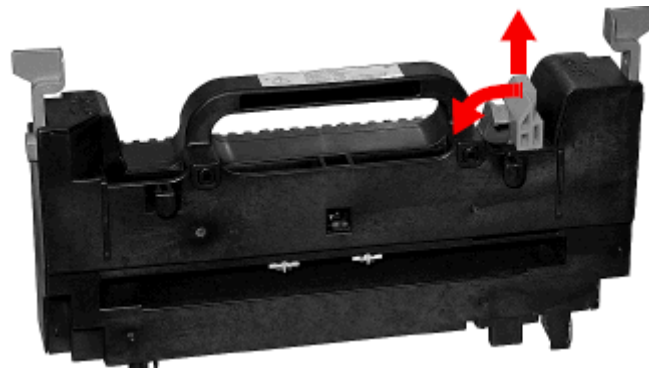


- 3.
- Hold the fuser **by its handle**.
 - Lift the fuser out of the printer.
 - If the fuser is still warm, place it on a flat surface which will not be damaged by heat.
 - After letting the fuser cool down, discard it.



- 4.
- Remove the new fuser from its packaging.
 - Remove any packing tape.

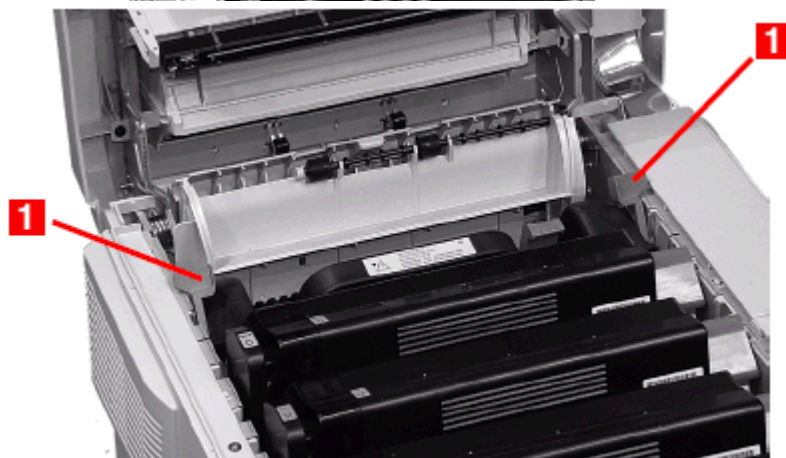
5. Push the orange transport lock to the left to release it. You'll hear it snap. Remove it.



6. Hold the new fuser by the handle. The fuser pressure release lever (1) should be on the right. Lower the fuser into the printer.



7. Push the two blue retaining levers (1) toward the rear of the printer to lock the fuser in place.



8. Close and latch the top cover.



Check Current Printer Settings

To print a list of the current settings-

1. Press **+** until you see **INFORMATION MENU**.
2. Press **ENTER** until you see **PRINT MENU MAP** (Execute).
3. Press **ENTER**.
4. The Menu Map will print. The printer will go back on line.

Reset Factory Default Settings

To reset the printer menu to its original default settings:

1. Press **+** to enter the Menu Mode.
2. Press **+** until you see **MAINTENANCE MENU**.
3. Press **ENTER** until you see **MENU RESET (Execute)**
4. Press **ENTER**.
5. The printer will reset and return to the on-line state.

Service and Support

Okidata is available 24 hours a day, 7 days a week

- Visit our multilingual web site: www.okiprintingsolutions.com
- Call 1-800-654-3282

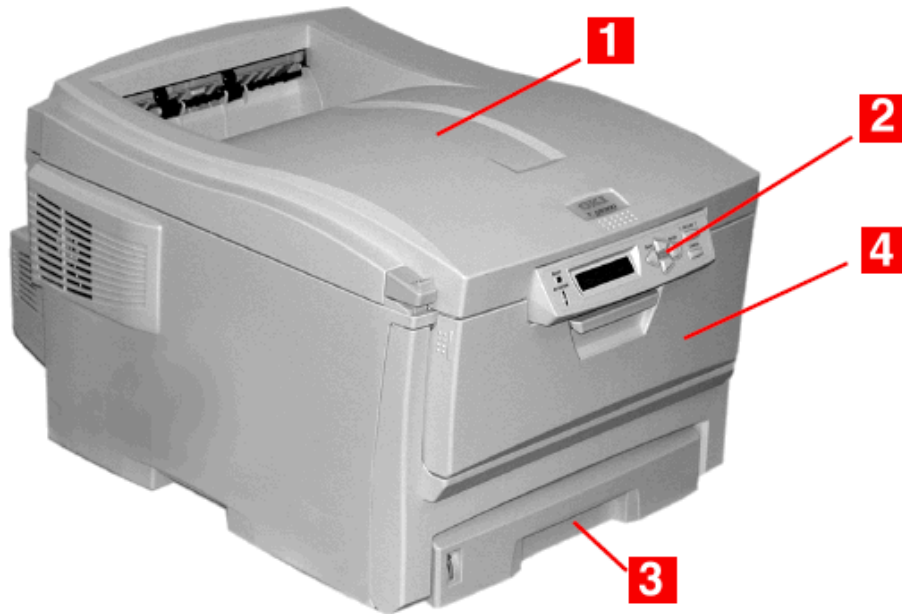
OKI Printer Supplies

The following discounted printer supplies and pre-perforated forms for the OKI 6100n are available from RadioShack via the 050- supply SKUs below.

Note – Prices are subject to change.

SKU	Description	Fran Cost	List
050-1539	Yellow Toner (5K)	\$114.98	\$139.00
050-1540	Black Drum (20K)	\$65.04	\$70.00
050-1541	Black Toner (6K)	\$56.10	\$90.00
050-1542	Cyan Drum (20K)	\$69.60	\$75.00
050-1543	Cyan Toner (5K)	\$119.98	\$139.00
050-1544	Magenta Drum (20K)	\$69.60	\$75.00
050-1545	Magenta Toner (5K)	\$118.80	\$139.00
050-1546	Yellow Drum (20K)	\$69.60	\$75.00
050-2050	Shelf Tag-Perf 200 Sheets	\$4.50	N/A
050-2051	Peg Tag-Perf 200 Sheets	\$6.90	N/A

Diagram – Front View



1. Output Stacker, face down

Standard printed copy delivery point.

Holds up to 250 sheets of 20-lb. (75 g/m²) paper.

2. Operator Panel - Menu driven operator controls and LCD display panel

3. Paper Tray

Standard paper tray.

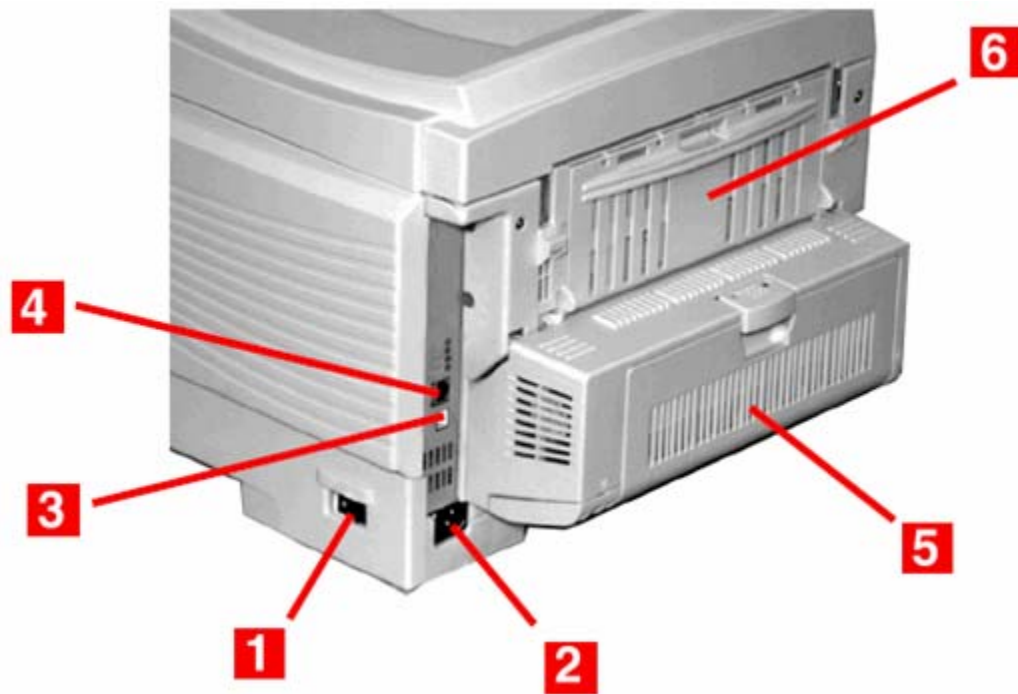
Holds up to 300 sheets of 20-lb. (75 g/m²) paper.

4. Multi-Purpose Tray

Used for feeding transparencies, heavier paper stocks, envelopes and other special media.

Also for manual feeding of single sheets when required

Diagram – Rear View



1. On/Off Switch
2. Socket for Power Cord – **USE POWER CORD IN BOX**
3. USB Interface –Connect HP Print Server to this port (optional – not covered by these instructions)
4. Network Interface
5. Duplex Unit
6. Rear Stacker (face up) Capacity 100 sheets

Free Manuals Download Website

<http://myh66.com>

<http://usermanuals.us>

<http://www.somanuals.com>

<http://www.4manuals.cc>

<http://www.manual-lib.com>

<http://www.404manual.com>

<http://www.luxmanual.com>

<http://aubethermostatmanual.com>

Golf course search by state

<http://golfingnear.com>

Email search by domain

<http://emailbydomain.com>

Auto manuals search

<http://auto.somanuals.com>

TV manuals search

<http://tv.somanuals.com>