

AM/FM Stereo Armband Radio

12-807

OWNER'S MANUAL — Please read before using this equipment.

Thank you for purchasing a RadioShack AM/FM Stereo Armband Radio. Your radio is perfect for anyone on the go! You can store your favorite stations in memory (up to 10 AM and 10 FM). The weather-resistant design repels moisture. The supplied stereo earbuds let you listen in comfort wherever you go.

THE FCC WANTS YOU TO KNOW

This equipment has been tested and found to comply with the limits for a Class B digital device, pursuant to Part 15 of the *FCC Rules*. These limits are designed to provide reasonable protection against harmful interference in a residential installation. This equipment generates, uses and can radiate radio frequency energy and, if not installed and used in accordance with the instructions, may cause harmful interference to radio communications.

However, there is no guarantee that interference will not occur in a particular installation. If this equipment does cause harmful interference to radio or television reception, which can be determined by turning the equipment off and on, the user is encouraged to try to correct the interference by one or more of the following measures:

- Reorient or relocate the receiving antenna.
- Increase the separation between the equipment and receiver.
- Consult your local RadioShack store or an experienced radio/TV technician for help.
- If you cannot eliminate the interference, the FCC requires that you stop using your radio.

Changes or modifications not expressly approved by RadioShack may cause interference and void the user's authority to operate the equipment.

This device complies with Part 15 of the *FCC Rules*. Operation is subject to the condition that this device does not cause harmful interference.

INSTALLING BATTERIES

Your armband radio requires two AAA batteries (not supplied) for power. For the best performance and longest life, we recommend RadioShack alkaline batteries.


Cautions:

- Use only fresh batteries of the required size and recommended type.
- Do not mix old and new batteries or different types of batteries (standard or alkaline).
- If the radio gets wet, open the battery compartment and ensure that the batteries are dry.

Important: To protect the time and stations stored in memory, be sure **OFF/ONE-BASS** is set to **OFF** before removing the batteries, and replace the batteries within 45 seconds.

1. Press down on the two triangle markings on the back cover and slide off the cover.
2. Insert two AAA batteries into the compartments, according to the polarity symbols (+ and -) marked inside.

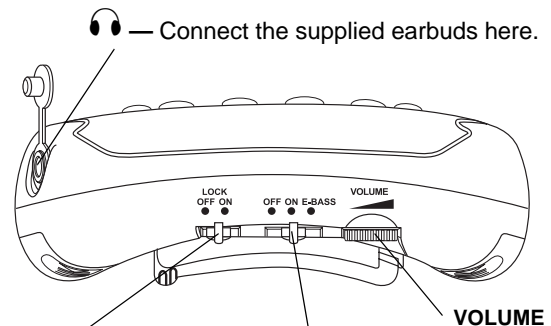
3. Replace the cover.

When the sound becomes weak or distorted,  flashes, or the radio stops operating properly, replace the batteries.

Warning: Dispose of old batteries promptly and properly. Do not burn or bury them.

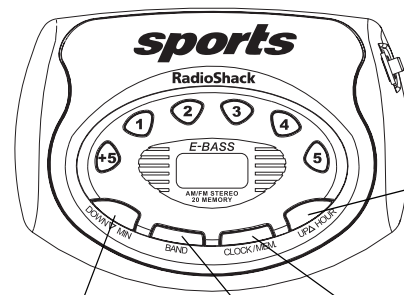
Caution: If you do not plan to use the radio with batteries for a month or longer, remove the batteries. Batteries can leak chemicals that can destroy electronic parts.

USING THE ARMBAND RADIO



LOCK OFF/ON — Slide to **ON** to lock the front panel controls or **OFF** to unlock them.

OFF/ON/E-BASS — Slide to **ON** to turn on the radio, **E-BASS** to enhance bass sound, or **OFF** to turn off the radio.



DOWN ▼ MIN — Repeatedly press or hold down to tune to the desired station or to set the minute.

BAND — Press to select AM or FM.

UP ▲ HOUR — Repeatedly press or hold down to tune to the desired station or to set the hour.

CLOCK/MEM — Set the clock or store your favorite stations.

Setting the Clock

1. Slide **OFF/ONE-BASS** to **OFF** to turn off radio.
2. Press **CLOCK/MEM**. The display flashes.

Note: If the display stops flashing before you finish, press **CLOCK/MEM** again.

3. Press **UP ▲ HOUR** and **DOWN ▼ MIN** to set the time.
4. Press **CLOCK/MEM** to store the time.

Storing a Station in Memory

1. Slide **OFF/ON/E-BASS** to **ON**.
2. Press **BAND** to select FM or AM. **Fm** or **Am** appears.
3. Press **UP ▲ HOUR** or **DOWN ▼ MIN** to select a station.
4. Press **CLOCK/MEM. MEMO** flashes.
Note: If the display stops flashing before you finish, press **CLOCK/MEM** again.
5. Press the number button for the desired location. (For location 6, press **+5** and **1**; for location 8, press **+5** and **3**, etc.)
6. Press **CLOCK/MEM** again to store the station.
7. To listen to a stored station, press the number button for the desired station's memory location.

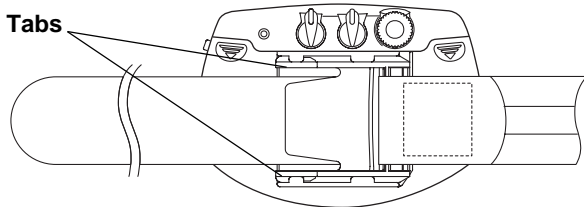
REPLACING THE EAR PADS

For added comfort, you can replace the silicon ear pads on your supplied earbuds with foam ear pads (not supplied, available at your local RadioShack store).

1. Lift up the grill caps at the center of the earbuds.
2. Gently pull the silicon ear pads off the earbuds.
3. Fit new ear pads over the earbuds.
4. Snap the grill caps back into place.

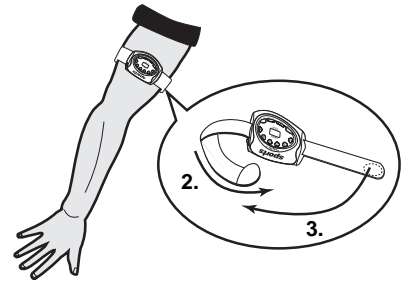
USING THE ARMBAND

To attach the armband to the radio, insert the armband mount into the guides on the back of the radio, closed end first, and slide it into place until it locks.



To remove the armband, press the tabs on the end of the armband mount inward and slide the mount off the radio.

1. Straighten the long end of the armband.
2. Wrap the long end of the armband around your arm.
3. Pull the short end of the armband over the long end and fasten it with the hook-and-loop tape.



LISTENING SAFELY

To protect your hearing, follow these guidelines when you use earphones.

- Set the volume to the lowest setting before you begin listening. After you begin listening, adjust the volume to a comfortable level.
- Do not listen at extremely high volume levels. Extended high-volume listening can lead to permanent hearing loss.
- Once you set the volume, do not increase it. Over time, your ears adapt to the volume level, so a volume level that does not cause discomfort might still damage your hearing.

Traffic Safety

Do not wear earphones while operating a motor vehicle or riding a bicycle. This can create a traffic hazard and could be illegal in some areas.

Even though some earphones let you hear some outside sounds when listening at normal volume levels, they still can present a traffic hazard.

SPECIFICATIONS

AM	520 – 1710 kHz
FM	87.5 – 108.1 MHz
Output Power	15 mW + 15 mW
Earphone Jack	1/8 in dia. (3.5 mm dia.)
Power Source	Two AAA Batteries
Alkaline Battery Life	33 Hours (FM), 45 Hours (AM)
Dimensions (HWD)	2 ³ / ₄ × 3 ³ / ₄ × 1 ¹ / ₄ in (69 × 96 × 32 mm)
Weight (with battery)	3.9 oz (110 g)

Specifications are typical; individual units might vary. Specifications are subject to change and improvement without notice.

Limited Ninety-Day Warranty

This product is warranted by RadioShack against manufacturing defects in material and workmanship under normal use for ninety (90) days from the date of purchase from RadioShack company-owned stores and authorized RadioShack franchisees and dealers. EXCEPT AS PROVIDED HEREIN, RadioShack MAKES NO EXPRESS WARRANTIES AND ANY IMPLIED WARRANTIES, INCLUDING THOSE OF MERCHANTABILITY AND FITNESS FOR A PARTICULAR PURPOSE, ARE LIMITED IN DURATION TO THE DURATION OF THE WRITTEN LIMITED WARRANTIES CONTAINED HEREIN. EXCEPT AS PROVIDED HEREIN, RadioShack SHALL HAVE NO LIABILITY OR RESPONSIBILITY TO CUSTOMER OR ANY OTHER PERSON OR ENTITY WITH RESPECT TO ANY LIABILITY, LOSS OR DAMAGE CAUSED DIRECTLY OR INDIRECTLY BY USE OR PERFORMANCE OF THE PRODUCT OR ARISING OUT OF ANY BREACH OF THIS WARRANTY, INCLUDING, BUT NOT LIMITED TO, ANY DAMAGES RESULTING FROM INCONVENIENCE, LOSS OF TIME, DATA, PROPERTY, REVENUE, OR PROFIT OR ANY INDIRECT, SPECIAL, INCIDENTAL, OR CONSEQUENTIAL DAMAGES, EVEN IF RadioShack HAS BEEN ADVISED OF THE POSSIBILITY OF SUCH DAMAGES.

Some states do not allow limitations on how long an implied warranty lasts or the exclusion or limitation of incidental or consequential damages, so the above limitations or exclusions may not apply to you.

In the event of a product defect during the warranty period, take the product and the RadioShack sales receipt as proof of purchase date to any RadioShack store. RadioShack will, at its option, unless otherwise provided by law: (a) correct the defect by product repair without charge for parts and labor; (b) replace the product with one of the same or similar design; or (c) refund the purchase price. All replaced parts and products, and products on which a refund is made, become the property of RadioShack. New or reconditioned parts and products may be used in the performance of warranty service. Repaired or replaced parts and products are warranted for the remainder of the original warranty period. You will be charged for repair or replacement of the product made after the expiration of the warranty period.

This warranty does not cover: (a) damage or failure caused by or attributable to acts of God, abuse, accident, misuse, improper or abnormal usage, failure to follow instructions, improper installation or maintenance, alteration, lightning or other incidence of excess voltage or current; (b) any repairs other than those provided by a RadioShack Authorized Service Facility; (c) consumables such as fuses or batteries; (d) cosmetic damage; (e) transportation, shipping or insurance costs; or (f) costs of product removal, installation, set-up service adjustment or reinstallation.

This warranty gives you specific legal rights, and you may also have other rights which vary from state to state.

RadioShack Customer Relations, 200 Taylor Street, 6th Floor, Fort Worth, TX 76102

12/99

Free Manuals Download Website

<http://myh66.com>

<http://usermanuals.us>

<http://www.somanuals.com>

<http://www.4manuals.cc>

<http://www.manual-lib.com>

<http://www.404manual.com>

<http://www.luxmanual.com>

<http://aubethermostatmanual.com>

Golf course search by state

<http://golfingnear.com>

Email search by domain

<http://emailbydomain.com>

Auto manuals search

<http://auto.somanuals.com>

TV manuals search

<http://tv.somanuals.com>