

# 11-Outlet Computer Network Equipment Surge Protector

61-2424

OWNER'S MANUAL — Please read before using this equipment.

## CONTENTS

The FCC Wants You to Know .....	1
Safety Precautions .....	2
Mounting the Surge Protector .....	2
Using the Cable Management Rack .....	2
Connections .....	2
Connecting a Telephone Line .....	2
Connecting the Computer's LAN Cable .....	3
Connecting the USB Control Adapter Sockets .....	3
Connecting the Computer Network Device's AC Power Cord(s) .....	3
Operation .....	3
Using the Safety Slide Cover .....	3
Using the Indication Tags .....	3
Troubleshooting .....	3
Care .....	4
Service and Repair .....	4
Specifications .....	4

### ! IMPORTANT !

If an icon appears at the end of a paragraph, go to the box on that page with the corresponding icon for pertinent information.

- |             |               |
|-------------|---------------|
| ⚠ — Warning | ! — Important |
| ⚡ — Caution | □ — Note      |

### ⚡ CAUTION ⚡

- This product is intended for indoor use only.
- This surge protector is not a lightning arrester and might not protect against lightning-induced voltage surges.
- Be sure the total wattage of all connected devices does not exceed 1,875 watts.
- Use the surge protector only with a three-prong standard AC plug. The surge protector cannot provide protection without a grounded AC source.

Thank you for purchasing the RadioShack 11-Outlet Computer Network Equipment Surge Protector. It protects your valuable computer network equipment from damage caused by sudden electrical spikes and surges. Your surge protector absorbs electrical spikes and power surges, and ensures steady performance of the connected devices by filtering electromagnetic and radio frequency interference. ⚡

**Swift Detection and Protection** — Detects and protects against a power surge of up to 6,000 volts and 135,000 amps within 1 nanosecond (1 billionth of a second).

**Safety Alarm** — Alerts you when the AC line is no longer protected (surge protector stops conducting power).

**Surge Protected Modular Phone Jacks** — RJ-11 connections provide protection against surges from a connected fax/modem.

**4 AC Adapter Spacing** — Lets you plug in up to four AC adapters into your surge protector.

**GROUNDING WHEN LIT Indicator** — Lights when the connected devices are properly grounded.

**RESET** — See "Troubleshooting" on Page 3.

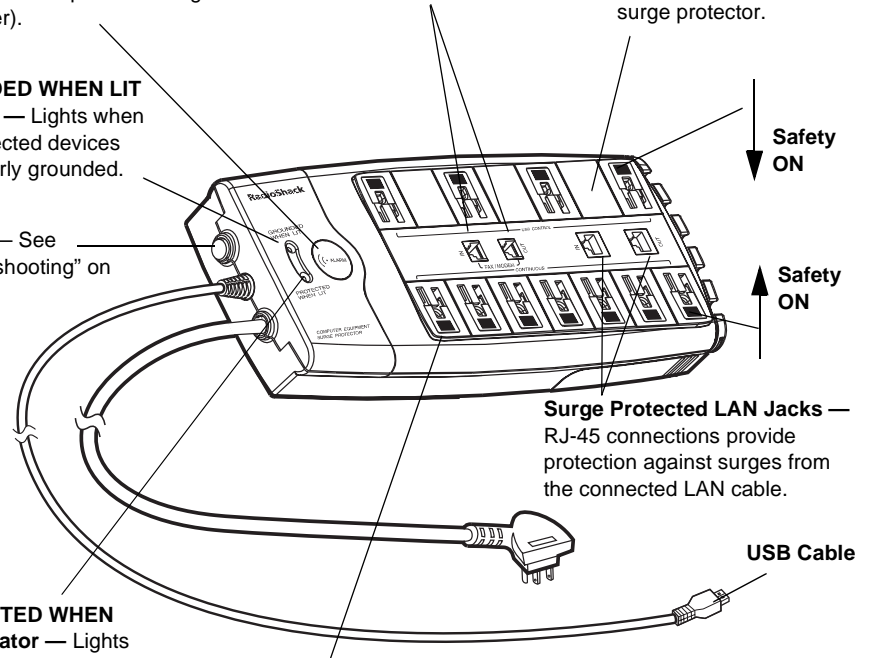
**PROTECTED WHEN LIT Indicator** — Lights when the connected devices are protected.

**Safety Slide Covers** — Prevent children from inserting metal objects into the unused AC socket(s).

**Power Shutdown Protection** — Protects the connected appliances from being damaged by shutting down power when surge protection is depleted (see "Troubleshooting" on Page 3).

**Cable Management Rack** — lets you easily route the connected cables (see "Using the Cable Management Rack" on Page 2).

**Indication Tags** — Identify which device's power cord is connected to which AC socket, so you can avoid disconnecting the wrong device.



## THE FCC WANTS YOU TO KNOW

Your surge protector complies with Part 68 of *FCC Rules*. You must, upon request, provide the FCC registration number and the REN to your telephone company.

You must not connect your surge protector to:

- coin-operated systems
- party-line systems
- most electronic key telephone systems

We have designed your surge protector to conform to federal regulations, and you can connect it to most telephone lines. However, each surge protector that you connect to the telephone line draws power from the telephone line. We refer to this power draw as the device's ringer equivalence number, or REN.

If you use more than one phone or other device on the line, add up all of the RENs. If the total is more than five (three in rural areas), your telephones might not ring. If ringer operation is impaired, remove a device from the line.

## SAFETY PRECAUTIONS

Your surge protector connects your fax, modem or other data line to a telephone line. When using telephone lines, it is important to follow these safety precautions. ⚠

### ⚠ WARNING ⚠

Do not use the surge protector with an aquarium or near wet locations.

### ✓ NOTE ✓

- Use appropriate mounting anchors if you are mounting the surge protector to drywall.
- The appropriate screw size is shown on the mounting template.

- Never install telephone wiring during a lightning storm.
- Never install a telephone jack in wet locations unless the jack is specifically designed for use in wet locations.
- Never touch uninsulated telephone wires or terminals unless the telephone line has been disconnected at the network interface.
- Use caution when installing or modifying telephone lines.

## MOUNTING THE SURGE PROTECTOR

You can place the surge protector on a level surface or mount it on a wall. Select a location that is:

- near a grounded AC outlet
- near a telephone wall jack
- out of the way of normal activities

1. Use the supplied mounting template to mark the holes on the selected location.

2. Drive in two wood screws (not supplied) with heads that fit into the keyhole slots on the bottom of the surge protector. ✓
3. Align the surge protector's keyhole slots with the wood screws, then press the surge protector down to secure it.

## USING THE CABLE MANAGEMENT RACK

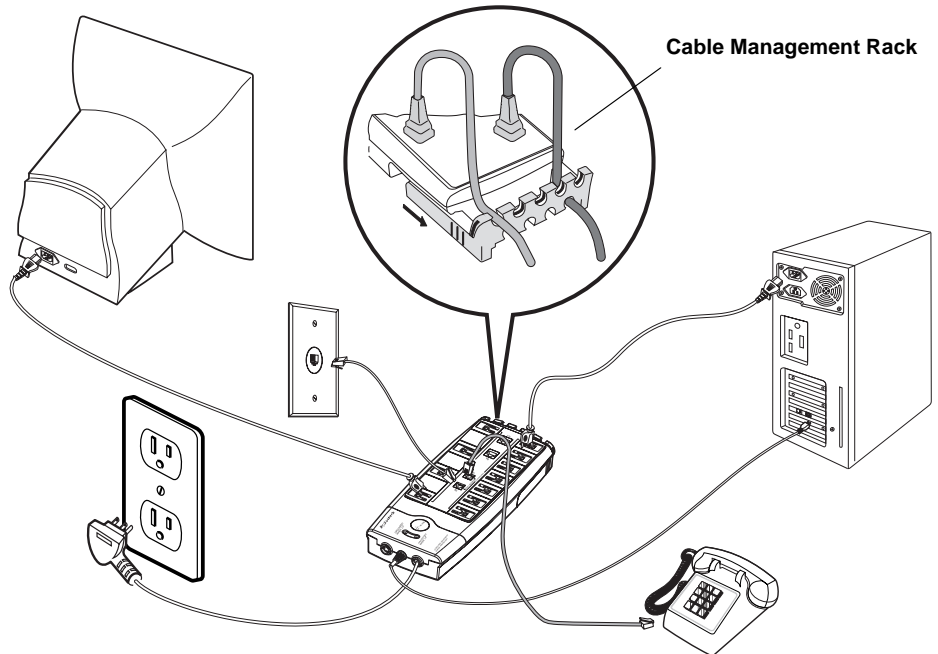
The five cable grooves on the top cable rack and the four cable grooves on the bottom let you place the related cable groups together for easy identification. (See inset illustration below.)

1. Slide the cable management rack all the way out until it stops.
2. To snap cables into the grooves at the top of the cable management rack, connect the cables to the surge protector then snap the cables into the top grooves.

To snap cables into the grooves at the bottom of the management rack, route the cables below the rack's frame and connect the cables to the surge protector, then snap the cables into the bottom grooves.

## CONNECTIONS

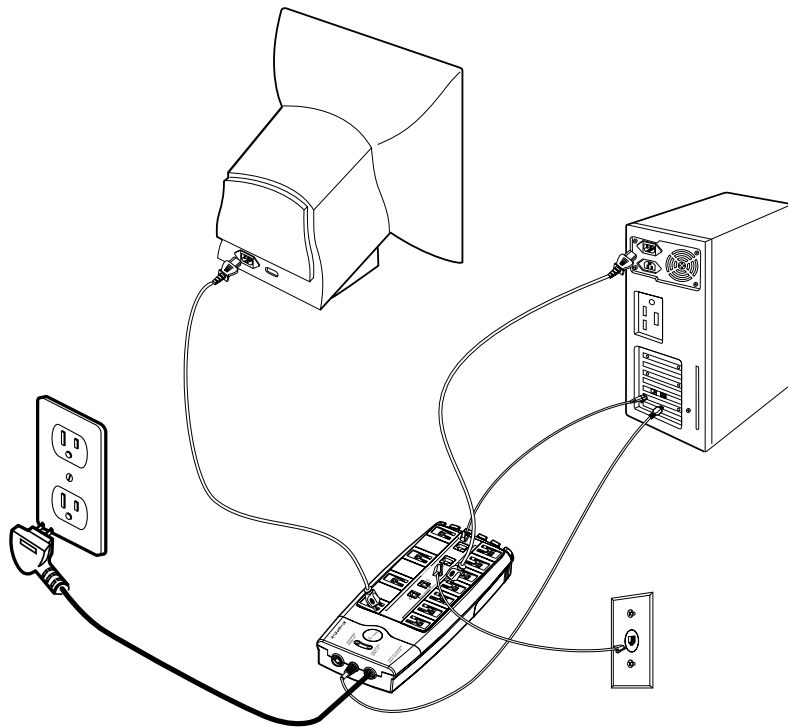
### CONNECTING A TELEPHONE LINE



1. Connect one end of a modular telephone cord (not supplied) to the surge protector's **FAX/MODEM IN** jack, and the other end to a telephone wall jack.
2. Connect one end of an existing telephone cord (not supplied) to the

surge protector's **FAX/MODEM OUT** jack, and the other end to your fax, modem, or telephone.

## CONNECTING THE COMPUTER'S LAN CABLE



1. Connect your computer's LAN OUT cable to the surge protector's LAN IN jack.
2. Connect the surge protector's LAN OUT to your computer equipment's RJ45 IN jack using a LAN cable with RJ45 plug at two ends (not supplied).

sockets if you want their power to be controlled by the connected computer.

## OPERATION

After you complete all the connections, plug the surge protector's AC power cord into a three-prong standard grounded AC outlet. The GROUNDED WHEN LIT and PROTECTED WHEN LIT indicators light.

If any of the indicator lights fail, see "Troubleshooting".

## USING THE SAFETY SLIDE COVER

Your surge protector is equipped with safety slide covers on each of its 11 AC sockets. Slide the cover up to protect each unused AC socket.

## USING THE INDICATION TAGS

Your surge protector comes with pairs of indication tags to identify which device's power cord is connected to which AC socket. Stick a large color tag on the power cord at the rear of the device and the same color small tag next to the surge protector's target AC socket.

## TROUBLESHOOTING

### Condition

The GROUNDED WHEN LIT indicator does not light.

### Solution

Your surge protector is not grounded. You must move it to a different grounded, three-prong AC outlet.!

If the GROUNDED WHEN LIT still does not light after moving the surge protector to a



### NOTE

Do not connect your computer's AC plug to the **USB CONTROL** sockets. The power on and off for these sockets is controlled by the computer.

### ! IMPORTANT !

Operating this surge protector from a non-grounded outlet will invalidate your "Connected Equipment Guarantee" and puts your valuable equipment at risk.

### LIMITED FIVE-YEAR WARRANTY AND CONNECTED EQUIPMENT GUARANTEE

**LIMITED WARRANTY** — This surge protector product is warranted by RadioShack to the original purchaser against manufacturing defects in material and workmanship under normal use for five (5) years from the date of purchase (the "Warranty Period") from RadioShack company owned stores and authorized RadioShack franchisees and dealers. In the event of a covered product defect during the Warranty Period, RadioShack will, at its option, unless otherwise provided by law: (a) correct the defect by surge protector repair without charge for parts and labor; (b) replace the surge protector with one of the same or similar design; or (c) refund the purchase price of the surge protector.

**CONNECTED EQUIPMENT GUARANTEE** — RadioShack warrants to the original purchaser of the surge protector that if any electronic equipment (the "Connected Equipment"), which is properly installed and connected (as defined below) to the surge protector and is damaged during the Warranty Period by a transient voltage surge/spike from the AC power line, telephone line or coaxial line that enters the Connected Equipment through the surge protector, RadioShack will reimburse to the original purchaser of the surge protector the lower of the: (a) Connected Equipment repair charges; (b) purchase price of equipment comparable (as determined by RadioShack) to the Connected Equipment; or (c) original purchase price of the Connected Equipment, up to a maximum of fifty thousand U.S. dollars (\$50,000.00) (the "Equipment Limit"). The Connected Equipment Guarantee does not cover data loss or any other damages excluded in the all capitalized paragraph below. In order to qualify for Connected Equipment reimbursement, the surge protector must be returned to RadioShack and inspection of the surge protector must show its protection capacity was exhausted by a surge. "Properly installed and connected" means the surge protector must be plugged directly into a properly wired and grounded AC outlet; no extension cords, adapters, other ground wires or electrical connections may be used to connect the surge protector to AC power and no more than one piece of Connected Equipment may be connected to any one surge protector outlet. The wiring in the building must comply with all applicable codes (NEC, CSA, etc.) and all wires (power, telephone and coaxial) leading into the Connected Equipment must pass through the surge protector. To claim damage to Connected Equipment as a result of telephone line transients, the surge protector must provide telephone line protection, and your telephone service equipment must include a properly installed and operating "primary protection" device at the service entrance. Primary protection devices are normally available from the telephone company and added during telephone line installation. To claim damage to Connected Equipment as a result of coaxial line transients, the surge protector must provide coaxial line protection.

This Limited Warranty and Connected Equipment Guarantee applies only to the original purchaser of the surge protector. **EXCEPT AS PROVIDED HEREIN, RADIOSHACK MAKES NO EXPRESS WARRANTIES AND ANY IMPLIED WARRANTIES, INCLUDING THOSE OF MERCHANTABILITY AND FITNESS FOR A PARTICULAR PURPOSE, ARE LIMITED IN DURATION TO THE DURATION OF THE WRITTEN LIMITED WARRANTIES CONTAINED HEREIN. EXCEPT AS PROVIDED HEREIN, RADIOSHACK SHALL HAVE NO LIABILITY OR RESPONSIBILITY TO CUSTOMER OR ANY OTHER PERSON OR ENTITY WITH RESPECT TO ANY LIABILITY, LOSS OR DAMAGE CAUSED DIRECTLY OR INDIRECTLY BY USE OR PERFORMANCE OF THE PRODUCT OR ARISING OUT OF ANY BREACH OF THIS LIMITED WARRANTY OR CONNECTED EQUIPMENT GUARANTEE, INCLUDING, BUT NOT LIMITED TO, ANY DAMAGES RESULTING FROM INCONVENIENCE, LOSS OF TIME, DATA, PROPERTY, REVENUE, OR PROFIT OR ANY INDIRECT, SPECIAL, INCIDENTAL, OR CONSEQUENTIAL DAMAGES, EVEN IF RADIOSHACK HAS BEEN ADVISED OF THE POSSIBILITY OF SUCH DAMAGES.**

*Continued*

## CONNECTING THE USB CONTROL ADAPTER SOCKETS

Your surge protector's convenient **USB CONTROL ADAPTER** sockets let you use your computer to turn any device connected to these sockets on or off instead of turning the devices on and off individually. When you turn your computer on or off, the connected **USB CONTROL ADAPTER** sockets are also turned on and off.

1. Connect your computer to one of the surge protector's **CONTINUOUS** sockets. ✓
2. Connect the AC adapter plug of the devices (computer peripherals) that you want to be turned on or off by the computer to the surge protector's **USB CONTROL** sockets.
3. Connect the surge protector's USB plug to the computer's USB port.

## CONNECTING THE COMPUTER NETWORK DEVICE'S AC POWER CORD(S)

Connect your computer network devices' grounded AC power cords (up to seven) to the surge protector's AC sockets and AC adapters (up to four) to the surge protector's **USB CONTROL** sockets. You can also connect extra grounded AC plugs (excluding the computer's) to the **USB CONTROL**

## CAUTION

**Retain Instructions**— Retain the safety and operating instructions for future reference.

**Damage** — Unplug this appliance from the wall outlet and replace it:

- When the power cord or plug is damaged.
- If liquid has been spilled or objects have fallen into the appliance.
- If the appliance has been exposed to rain or water.
- If the appliance has been dropped or damaged in any way.
- When the PROTECTED WHEN LIT indicator fails to light.

### LIMITED FIVE-YEAR WARRANTY AND CONNECTED EQUIPMENT GUARANTEE

(Continued)

Some states do not allow limitations on how long an implied warranty lasts or the exclusion or limitation of incidental or consequential damages, so the above limitations or exclusions may not apply to you.

To make a claim for surge-induced damage to Connected Equipment, you must:

1. Call RadioShack at 1-888-353-1560 for a return authorization number during the Warranty Period. Under no circumstances will a claim for surge-induced damage to Connected Equipment be accepted without a return authorization number;
2. Have any surge-induced, damaged Connected Equipment repaired (or get an estimate for repair) by a service center authorized by the manufacturer of the Connected Equipment unless the service center determines that the Connected Equipment is not repairable or that the cost of repair will be more than the purchase price of comparable replacement equipment. If the Connected Equipment is not to be repaired, get a written quotation for the purchase price of comparable replacement equipment. In no event will RadioShack reimburse more than the Equipment Limit. The repair bill or estimate from the authorized service center must indicate that the damage to the Connected Equipment was surge-induced; and
3. Ship the original surge protector, postage prepaid to: RadioShack, 7020 Koll Center Pkwy, Suite 136, Pleasanton, California, 94588. Include: (a) your name, address and daytime telephone number; (b) the original or a photocopy of the sales receipt for the surge protector; (c) a brief description of any problem with the surge protector; (d) a brief description of how the damage to the Connected Equipment occurred; (e) the original authorized service center repair bill or estimate documenting that the damage to the Connected Equipment was surge-induced; and (f) if replacement equipment is to be purchased, the original or a photocopy of the quotation for comparable replacement equipment and the authorized service center repair estimate must contain a statement that the Connected Equipment is not repairable or that the cost of repair will be more than the purchase price of comparable replacement equipment.

If RadioShack determines that damage to Connected Equipment is covered, RadioShack will reimburse, up to the Equipment Limit amount defined above, to the original purchaser of the surge protector the lower of the: (a) repair charges; (b) purchase price of comparable replacement equipment; or (c) the original purchase price of the Connected Equipment. In addition, in the event of a covered product defect during the Warranty Period, RadioShack will, at its option, unless otherwise provided by law: (a) correct the defect by surge protector repair without charge for parts and labor; (b) replace the surge protector with one of the same or similar design; or (c) refund the purchase price of the surge protector. To make a warranty claim for a defect in the surge protector without a claim for surge-induced damage to Connected Equipment, you must, during the Warranty Period, take the surge protector and the RadioShack sales receipt as proof of purchase date to any RadioShack store.

All replaced parts, products, and Connected Equipment and products and Connected Equipment on which a refund is made, become the property of RadioShack. New or reconditioned parts and products may be used in the performance of warranty service. Repaired or replaced parts in surge protectors and replacement surge protectors are warranted for the remainder of the Warranty Period. You will be charged for repair or replacement of the product made after the expiration of the Warranty Period. This Limited Warranty and Connected Equipment Guarantee does not cover: (a) damage or failure caused by or attributable to acts of God, abuse, accident, misuse, improper or abnormal usage, failure to follow instructions, improper installation or maintenance, alteration, lightning; (b) any repairs other than: (i) surge protector repairs provided by a RadioShack Authorized Service Facility; and (ii) reimbursement of the cost of initial repairs to Connected Equipment performed by a service center authorized by the manufacturer of the Connected Equipment; (c) consumables such as fuses or batteries; (d) cosmetic damage; (e) transportation, shipping or insurance costs; or (f) costs of product or Connected Equipment removal, installation, set-up service adjustment or reinstallation.

This warranty gives you specific legal rights, and you may also have other rights which vary from state to state. RadioShack Customer Relations, 200 Taylor Street, Sixth Floor, Fort Worth, Texas 76102

grounded outlet, return the product to RadioShack for assistance.

If the surge protector proves to be working properly, you may need to contact a professional electrician to check your outlets for proper grounding.

#### Condition

The PROTECTED WHEN LIT and GROUNDED WHEN LIT indicators turn off, and RESET pops out.

#### Solution

Your surge protector received a current that exceeded its capacity due to overload. When this happens, the 15-amp circuit breaker (located on the side of the case) trips to prevent possible damage, and RESET pops out. To reset the surge protector, disconnect one or more of the connected devices and allow the surge protector to cool down. Then push RESET in.

#### Condition

The PROTECTED WHEN LIT and GROUNDED WHEN LIT indicators turn off, and the surge protector sounds an alarm.

#### Solution

Your surge protector's AC line is no longer protected from surges and power is not

## SPECIFICATIONS

Line Voltage .....	125V
Line Current .....	15A
Frequency .....	60Hz
Number of AC Outlets .....	11 (4 USB-Controlled and 7 Regular Outlets)
Cord Length/Plug Type .....	8ft, right angle plug
Circuit Breaker .....	15A
Housing Material .....	Plastic
PROTECTED WHEN LIT Indicator .....	Lights green when the AC line is protected
GROUNDED WHEN LIT Indicator .....	Lights green when the ground wire is securely connected
Noise Frequency Range .....	100 kHz – 100 MHz
Noise Attenuation Level .....	Up to 55dB
Maximum Surge Voltage .....	6,000V
Composite Maximum Surge Current .....	120VAC Line 135,000A
Phone Line .....	10,500A
Total Maximum Surge Current .....	145,500A
Composite Maximum Energy Dissipation: 120 VAC Line .....	2,421J
Phone Line.....	180J
Total Maximum Energy Dissipation .....	2,601J
Modes of Protection .....	Three (Hot-Neutral, Hot-Ground, Neutral-Ground)
Clamping Time .....	<1 nanosecond
Clamping Voltage .....	330V
Additional Protect .....	LAN (1 in, 1 out), protects pin 1, 2 and 3, 6 Fax/Modem (1 in, 1 out) Tip-Ground, Ring-Ground, Tip-Ring
Operation Temperature .....	32 to 122°F (0 to 50°C)
UL Approvals .....	UL1449 & UL1363
FCC Certification .....	Part 68

Specifications are typical; individual units might vary. Specifications are subject to change and improvement without notice.

allowed to pass beyond the alarm. When the surge protector receives an unusually strong surge, the built-in protection absorbs the surge to protect your equipment. If the surge is strong enough, it diminishes the protection circuitry's ability and the surge protector sounds an alarm. If the PROTECTED WHEN LIT and GROUNDED WHEN LIT indicators will not light, replace the surge protector.

## CARE

Keep the surge protector dry; if it gets wet, wipe it dry immediately. Use and store the surge protector only in normal temperature environments. Handle the surge protector carefully; do not drop it. Keep the surge protector away from dust and dirt, and wipe it with a damp cloth occasionally to keep it looking new.

## SERVICE AND REPAIR

If your surge protector is not performing as it should, take it to your local RadioShack store for assistance. Modifying or tampering with the surge protector's internal components can cause a malfunction and might invalidate its warranty.

## Free Manuals Download Website

<http://myh66.com>

<http://usermanuals.us>

<http://www.somanuals.com>

<http://www.4manuals.cc>

<http://www.manual-lib.com>

<http://www.404manual.com>

<http://www.luxmanual.com>

<http://aubethermostatmanual.com>

Golf course search by state

<http://golfingnear.com>

Email search by domain

<http://emailbydomain.com>

Auto manuals search

<http://auto.somanuals.com>

TV manuals search

<http://tv.somanuals.com>