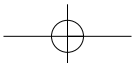
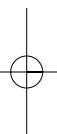


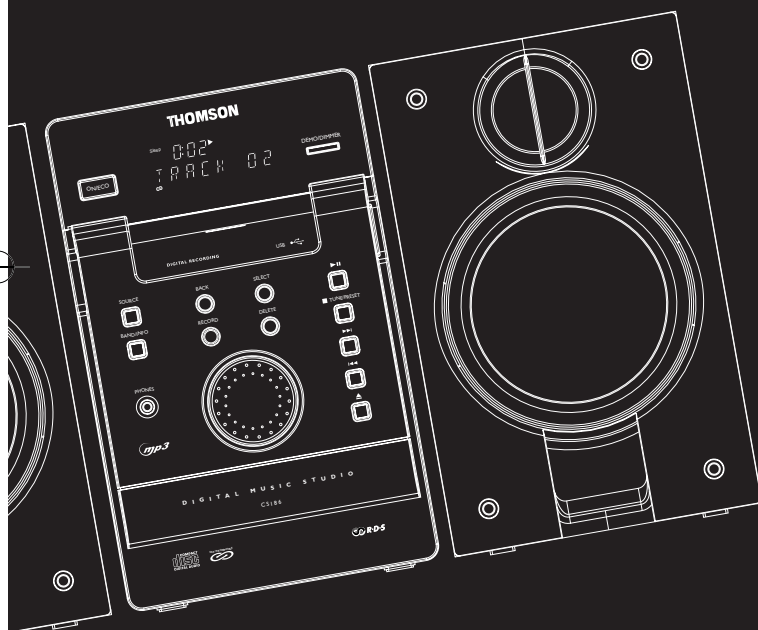
THOMSON
46, quai Alphonse Le Gallo
92648 Boulogne
Cedex FRANCE
www.thomson.net

56123200



THOMSON

user
manual



CS186

It is important to read this instruction book prior to using your new product for the first time.

Getting Started

EN

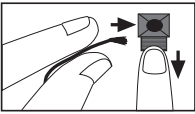
Using the FM and MW Antennas

Before you use your audio system, you'll want to make sure both the FM and MW antennas are positioned properly. Uncoil the FM antenna at the back of the unit, making sure it is fully extended (you may even want to tape it to the wall behind the unit if possible. The higher the better.) You'll also need to connect the MW antenna loop to the back of the unit if you listen to MW stations. Rotate the MW loop antenna for better reception.

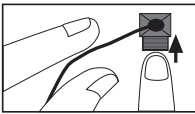
Connecting the Speakers

Speaker terminal tabs marked L are for left while R are for right. Each speaker has a black (negative) and a red (positive) wire. When connecting the speakers, match the red wires to the red jacks and the black wires to the black jacks.

Speaker Wire Connection



Push Speaker terminal tab down to insert wire.

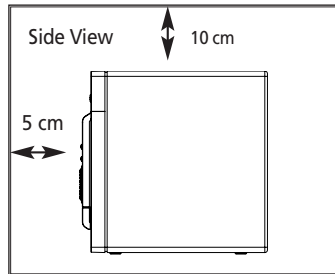
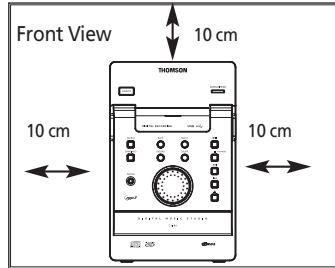


Release tab to lock wire in the terminal.

NOTE: Make sure the insulation is completely removed from the ends of the speaker wires at all connection points.

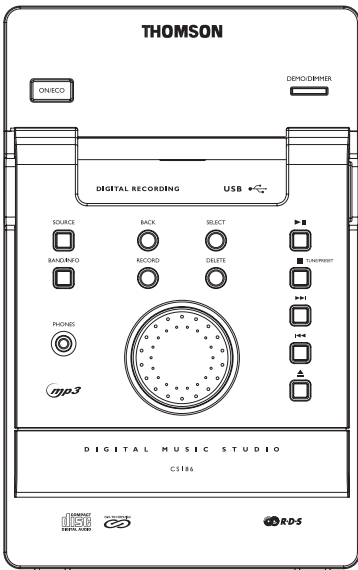
Installation

To ensure sufficient ventilation, keep the spacings shown below free from other surfaces:



General Controls

Main Unit - Front View



ON/ECO - Press briefly to turn on and off the unit. Press and hold in standby mode to enter ECO (power saving, without clock display) mode. The red standby indicator lights above the button.

DEMO/DIMMER - Activates and deactivates demonstration.



Tips:

In STANDBY mode, press **ON/ECO** to turn the system on in the previously used mode. Press **SOURCE** to select the corresponding mode. Look at the display icons to identify the current mode.

SOURCE - Selects among CD player, tuner, USB and AUX.

BAND/INFO - In CD mode - Selects display options to show track elapse time, track remain time or disc remain time.

In mp3 / WMA mode - Shows ID3 tag.

In USB mode - Shows memory usage.

In Tuner mode - selects radio band.

BACK - In navigation mode - navigates backwards.

In rename mode - edits previous alphabet

SELECT - In mp3 / WMA / USB stop mode - Enters navigation mode.

In navigation mode - navigates forward.

In rename mode - confirms the editing alphabet

RECORD - Starts and stops record to USB device.

DELETE - When reviewing program, removes track / file from Program List.

In rename mode - deletes current alphabet

In USB mode - Removes file from the connected USB device.

▶|| (PLAY/PAUSE) - Starts and pauses playback for CD and USB.

■ TUNE/PRESET - Stops CD and USB

In Tuner mode - selects tune or preset mode.

▶▶ (SKIP FORWARD) - In CD mode - Goes to the next CD track and setting options; searches forward through CD;

In USB mode - Skips to the next file;

In Tuner mode - Tunes up radio frequency.

◀◀ (SKIP BACKWARD) - In CD mode - Goes to the previous CD track and setting options; searches backward through CD;

In USB mode - Skips to the previous file;


In Tuner mode - Tunes down radio frequency.

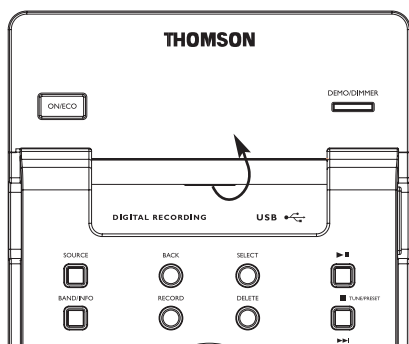
EN

USB Storage Device

This Audio System allows you to connect your own USB storage device. It supports all Mass Storage Class mp3 players and storage devices.

Connecting/Disconnecting USB storage device to the Main Unit

Lift the cover marked "mp3 player" . Insert the USB port of the USB storage device you want to connect into the USB connector of the main unit. Unplug the device to disconnect.



Selecting USB Mode


Press **SOURCE** repeatedly to select USB mode.

USB Playback Features

Start and Pause Playback

Press **PLAY / PAUSE**  to start and pause playback.

Stop Playback

Press  to stop playback operations. The unit enters navigation mode for 10 seconds before entering stop mode.

Stop Mode

Navigation Mode


02
TRACKS

02
FOLDERS







Tips:

In stop mode, press  (**RIGHT / ENTER**) to enter navigation mode and show disc menu.

In navigation mode, press  (**LEFT / BACK**) to return to stop mode.

Skipping Files

- Press  /  to skip to the previous or next file.
- Press and hold  /  to search through a file while it is playing.

Memory Usage

Press **BAND/INFO** on the main unit or **CD/INFO** on remote to view memory usage on the USB storage device.

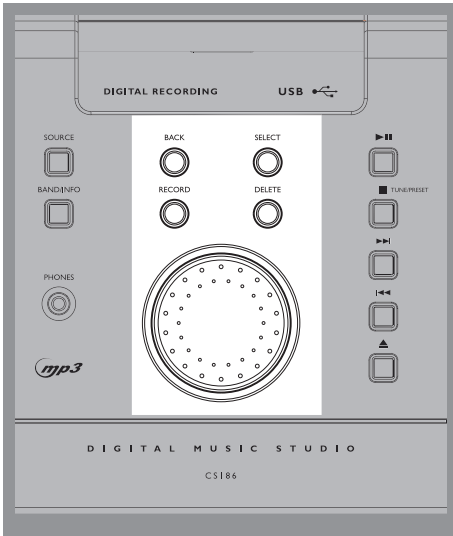
EN

Advanced Navigation Controls

EN

File Navigation

Main Unit



- SELECT** - Enters navigation mode from mp3 / WMA / USB stop mode.
Enters selected folder in navigation mode.
Begins playback of the selected file in navigation mode.
- BACK** - Goes back up one level in navigation mode; returns to stop mode from navigation mode when at root level.
- RECORD** - Starts and stops record to USB device.
- DELETE** - When reviewing program, removes track / file from Program List.
In rename mode - deletes current alphabet
In USB mode - Removes file from the connected USB device.
- Volume Control** - Rotate clockwise to navigate downwards.
Rotate counter-clockwise to navigate upwards.

Remote Control



- ◀ **(LEFT / BACK)**- Navigates backwards.
Returns to the previous navigation menu level.
Returns to stop mode from navigation mode.
- ▶ **(RIGHT / ENTER)**- Navigates forward.
Enters navigation mode from mp3 / WMA / USB stop mode.
Enters current folder and shows the first file/folder from current folder.
- △ **(UP)** - Navigates upwards.
Enters navigation mode from mp3 / WMA / USB stop mode.
Selects previous file/folder on the navigation menu.
- ▽ **(DOWN)**- Navigates downwards.
Enters navigation mode from mp3 / WMA / USB stop mode.
Selects next file/folder from the navigation menu.
- ADD** - *In mp3 / WMA / USB navigation mode* - adds the selected file into Program List.
- DEL** - When reviewing program, removes the selected file from Program List.
In USB mode - Deletes selected file.

Free Manuals Download Website

<http://myh66.com>

<http://usermanuals.us>

<http://www.somanuals.com>

<http://www.4manuals.cc>

<http://www.manual-lib.com>

<http://www.404manual.com>

<http://www.luxmanual.com>

<http://aubethermostatmanual.com>

Golf course search by state

<http://golfingnear.com>

Email search by domain

<http://emailbydomain.com>

Auto manuals search

<http://auto.somanuals.com>

TV manuals search

<http://tv.somanuals.com>