

# TOSHIBA

## **e-STUDIO520/600/720/850**

**Unleash the power of Toshiba quality.**





# POWER



TOSHIBA QUALITY

A4-RC

# UP YOUR OFFICE.

Toshiba brings you the power of performance with the new e-STUDIO520, e-STUDIO600, e-STUDIO720 and e-STUDIO850. Built to handle the heavy demands of busy office environments, these Multi-Functional Products (MFPs) deliver large print jobs while offering high-productivity, exceptional image quality and the latest security features. In addition, advantages like an extra large LCD panel, e-BRIDGE technology and special finishing options help put these systems in a class all of their own.

**e-STUDIO520/600/720/850**



# The technology of TOMORROW

## An outstanding performance

Thanks to advanced Toshiba technology, the e-STUDIO520, e-STUDIO600, e-STUDIO720 and e-STUDIO850 are top performers. Print and copy speeds are 52, 60, 72 and 85 pages per minute, respectively. All units scan 71 originals per minute at 600 dpi and are even faster when scanning to file at a lower resolution. With 100% duplex productivity, no time is lost while paper is printed on both sides. With an impressive warm-up time of just 160 seconds and a 30-second recovery from standby mode this combines to help reduce waiting time.

## Visibly superior

Performance doesn't come at the sacrifice of image quality. In fact, the system boasts the finest in its class. It produces crisp, clear prints at an industry-leading 2400 x 600dpi, thanks to a new image processor unit. Clarity is further enhanced by ultra-fine 8-micron toner and 40-micron

developer. An 8-bit monochrome scanner renders impressive, high-fidelity greyscales and sharpens onscreen images as well.



**4,000  
sheet LCF  
available**

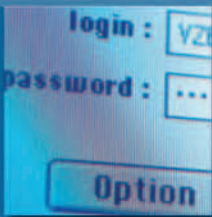




## Heightened security

Along with productivity and performance, today's businesses are becoming more concerned of the need for security of data stored in MFPs. That's why we've introduced several features to make the e-STUDIO520/600/720/850 even more secure. The data disk overwrite option writes over the data multiple times to protect previous copy and print jobs on the hard disk drive. In addition, a scrambler board encrypts hard drive data. To keep emailed documents secure, full SMTP authentication with LDAP support ensures scanned documents are only emailed by users who can be identified by the recipient. For added security, 10,000 user codes ensure that only those authorized are granted access. Even wireless usage is safe, thanks to the latest 802.11g wireless encryption protocol support.

**Extra Large**  
easy to use  
LCD panel



## e-STUDIO520/600/720/850

### Designed to handle anything

For instance, the high volume drawer configuration is flexible enough to meet whatever paper requirements you might have. Including the standard 2,500 sheet large capacity main drawer, the system provides 3,600 sheets on line in basic configuration. A 100 sheet Smart Stack Feed bypass and optional 4,000 sheet external LCF provides up to 7,600 sheets on line from five separate sources. You have all the capacity you need, whenever you need it.



*Make professional looking booklets with A4 to A3 size paper.*

## Finishing touches

The e-STUDIO520/600/720/850 provides a powerful array of finishing options. Choose from either: a 50-sheet multi-position stapling finisher or a 50-sheet unit with saddle-stitch booklet making. Both finishers have a 4,000-sheet maximum capacity. To offer you even more flexibility, the saddle-stitch units can make booklets using A4 to A3 size paper. You can do the layout yourself or let the system do it automatically.

Other options include a hole punch that creates two or three-hole documents. A post inserter allows you to add pre-printed pages, like colour covers and inserts, so documents that are mostly black and white can be produced much quicker and for far less than it would cost to produce the entire document on a full colour system.



**Lightning  
Fast**  
52/60/72/85  
PPM output

## The latest technology on a single board

Advanced e-BRIDGE technology combines copy, print, scan, and other functions in a single board architecture. This unified approach allows you to add functionality as you need it, in no time at all, thanks to USB key enablers that are simple to install. Just plug and print. Using e-FILING, you can distribute data to multiple destinations with a few

easy steps. Other features include Scan-to-Email, Internet faxing, and TopAccess® – a remote administration utility with a common interface across Toshiba products. And to perform all functions with greater speed, the system uses a lightning fast 600 MHz processor.



## More to offer

Toshiba technology sets the e-STUDIO520/600/720/850 apart. Experience and innovation are combined to create unique product benefits like “toner on the fly” that allows you to replace the high-yield toner cartridge while the system is in operation, no need to shut down just to add toner. Easy to change service modules also keep downtime to a minimum. And extended periodic maintenance intervals ensure reliability with some of the highest maintenance cycles on the market. Remote maintenance and event notification allow you to configure the system to automatically email orders for supplies, service, and periodic maintenance as needed.

## Expandability

With the optional Super G3 fax board fitted the e-STUDIO520/600/720/850 becomes a powerful communications hub in any environment.

From productivity to security, image quality to advanced technology, nothing can power up your office quite like the e-STUDIO520/600/720/850.

**e-STUDIO520/600/720/850**

**Toner  
on the fly**



## GENERAL

<b>Type</b>	Console
<b>Printing/Copying process</b>	Indirect electrostatic photographic method
<b>Original scanning method</b>	CCD line sensor
<b>Paper input capacity (80g/m<sup>2</sup>)</b>	Standard: 500 sheets x 2 (Drawer), 2,500 sheets (Large Capacity Feeder, A4), 100 sheets (Bypass) Optional: 4,000 sheets (External Large Capacity Feeder, A4) A3-A5R (Drawer), A3-A5R (Bypass), A3-A5R (Duplex), A4 [LCF] 64-209g/m <sup>2</sup>
<b>Paper size</b>	PowerPC 750FX/600MHz: Shared
<b>Paper weight</b>	Main Memory: 256MB, Shared/Page Memory: 64MB, Shared 40GB+: Shared
<b>Processor</b>	Approx: 130 seconds
<b>Memory</b>	Max: 2.0kW (220-240V)
<b>Hard disk drive</b>	698mm x 789mm x 1,213mm, approx. 204kg
<b>Warm-up time</b>	
<b>Power consumption</b>	
<b>Dimensions (W x D x H) &amp; weight</b>	
<b>Standard Stackless ADU (Automatic Duplexing Unit)</b>	
<b>Paper size</b>	A3-A5R
<b>Paper weight</b>	64-209g/m <sup>2</sup>
<b>Standard RADF (Reversing Automatic Document Feeder)</b>	
<b>Stack capacity</b>	100 sheets (80g/m <sup>2</sup> ) [2000 images in continue mode]
<b>Original setting</b>	Face up
<b>Available paper size</b>	A3-A5R
<b>Number of Template</b>	12,060
<b>Available paper weight</b>	50-127g/m <sup>2</sup> (single sided), 50-104g/m <sup>2</sup> (double sided)

## COPYING FUNCTIONS

<b>Acceptable originals</b>	Sheet, book, three dimensional object
<b>Maximum original size</b>	A3
<b>Copy size</b>	A3-A5R
<b>Resolution</b>	Scanning: 600dpi x 600dpi Printing: 2,400dpi x 600dpi (with smoothing)
<b>Gradation</b>	256 steps
<b>Copying speed</b>	52/60/72/85cpm (A4)
<b>Original scanning speed</b>	71spm (A4)
<b>First copy time</b>	Less than 4.0 seconds (e-STUDIO520/600/720) Less than 3.5 seconds (e-STUDIO850)
<b>Multiple copying</b>	Up to 9,999 copies
<b>Copy mode</b>	Text, Text/Photo (Default), Photo, Custom mode
<b>Reproduction ratio</b>	Zoom: 25-400% in 1% increments (Platen), 25-200% in 1% increments (RADF)
<b>Exposure control</b>	Automatic/Manual (11 steps)
<b>Major features</b>	

- Energy Saver •Trimming/Masking •Department Codes (1,000 kinds) •User Codes (10,000 kinds) •Mixed-size Copying
- Copy to Box (e-filing) •Cover Sheet •Sheet Insertion •XY Zoom •Electronic Sorting •Magazine Sort •Alternation •2in-1, 4in-1, 8in-1
- Annotation (Date/Time Print) •Job Reservation •Rotation Copy •Thick Paper mode •Job Build

## PRINTING FUNCTIONS\*

<b>Print engine resolution</b>	2,400dpi x 600dpi (with smoothing)
<b>Printing speed</b>	52/60/72/85ppm (A4)
<b>Drivers</b>	Windows® 98/Me/2000/XP/Server2003 (32 bit), Windows® NT 4.0, Macintosh® 8.6, 9.x, X ver 10.1/10.2/10.3 (PPD), UNIX (HP-LUX, Sun Solaris, IBM AIX, SCO), Linux, CUPS 1.0BaseT/1.0BaseTX, Full-speed USB, Optional IEEE802.11b/IEEE802.11g (Wi-Fi), Parallel (IEEE1284)
<b>Interface</b>	Windows® Server2003 (32 bit), 2000, NT4.0, NetWare® TCP/IP, IPX/SPX, EtherTalk, IPP, SNMP PCL6® compatible, PostScript® 3™ compatible
<b>Network OS</b>	
<b>Protocols</b>	
<b>PDL</b>	
<b>Major features</b>	

- Proof Print •Private Print •Scheduled Print •Duplex Printing •Watermark Printing •Nup Printing •Mixed-size Printing •Tab Print/Insertion
- Magazine Sort •Image Overlay •Front/Back Cover Insertion •Page Insertion •Print to Box (e-filing) •Department Code Control

## SCAN FUNCTIONS\*

<b>Scanning speed</b>	83spm (A4, 150/300dpi), 79spm (A4, 200/400 dpi), 71spm (A4, 600 dpi)
<b>Scanning resolution</b>	600, 400, 300, 200, 150dpi
<b>Scan mode</b>	Text, Text/Photo, Photo, Grey Scale (150-400dpi)
<b>Major features</b>	

- 2-sided Scan •Image Rotation •Mixed Size Paper scanning •Scan to Email •LDAP Search •Scan to file (SMB, FTP) •Scan to Box (e-filing)

## ELECTRONIC FILING FUNCTIONS

<b>Number of boxes</b>	Public Box: 1, User Box: 200
<b>Number of folders</b>	100 folders per Box
<b>Number of documents</b>	400 documents per Box/Folder
<b>Number of pages</b>	1,000 pages per document
<b>Capacity of HDD</b>	5GB
<b>Input to box</b>	Copy to Box, Print to Box, Received Fax to Box, Received Internet-Fax to Box and Scan to Box (depending on installed options)
<b>Box N/W access applications</b>	TWAIN Driver, File Downloader, e-filing web utility

## FAX FUNCTIONS\*

<b>Usable circuits</b>	Public Switched Telephone Network (PSTN)
<b>Communication mode</b>	Super G3, G3
<b>Number of lines</b>	1 line
<b>Modem speed</b>	Max. 33.6 Kbps
<b>Data compression</b>	JBIG, MMR, MR, MH
<b>Transmission speed</b>	Approx. 3 seconds per page
<b>Transmission resolution</b>	8 x 3.85, 8 x 7.7, 8 x 15.4, 16 x 15.4 line/mm
<b>Reception resolution</b>	8 x 3.85, 8 x 7.7, 8 x 15.4, 16 x 15.4 line/mm
<b>Print resolution</b>	24 x 23.1, 23.1 x 24 line/mm
<b>Scanning mode</b>	Text, Photo/Text, Photo
<b>Grey scale</b>	256 levels
<b>Printing speed</b>	52/60/72/85ppm (A4)
<b>Major features</b>	

- Telephone Book (1,000 destinations) •Broadcasting •Automatic Redialling •Group Dialling (200 groups, 400 destinations per group)
- Chain Dialling •Delayed Transmission •Recovery Transmission •Polling •Mailbox (F-code) •Received Fax to Box (e-filing)

## INTERNET-FAX FUNCTIONS\*

<b>Connectivity supported</b>	T.37 (Simple Mode)
<b>Format of sent attachments</b>	Tiff-S
<b>Scanning original document size</b>	A3-A5R (A3 & B4: Image will be reduced to A4 size and transmitted)
<b>TX resolution</b>	8 x 3.85, 8 x 7.7 dots/mm
<b>Major features</b>	

- On Ramp Gateway [Through the MailBox] •Off Ramp Gateway •Telephone Book (1,000 destinations)
- Received Internet Fax to Box (e-filing)

## NETWORK FAX FUNCTIONS\*

<b>Compatibility</b>	Standard: Internet-Fax, Option: Super G3, G3
<b>Drivers</b>	Windows® 98/Me/2000/XP, Windows® NT 4.0

## NETWORK/DEVICE MANAGEMENT UTILITY

- TopAccess™ •TopAccessDocMon •Client device status/job status/control, HP Openview, HP WebJetAdmin

\*Optional kit/board required.

## DISTRIBUTED BY

## OPTIONS

<b>Printer Kit GM-1050</b>	
<b>Printer/Scanner Kit GM-2040</b>	
<b>Scanner Kit GM-4010</b>	
<b>Fax Board GD-1170</b>	
<b>Large Capacity Feeder MP-4004A</b>	
<b>Paper supply</b>	4,000-sheet (80gsm)
<b>Available paper size &amp; weight</b>	A4, 64-209g/m <sup>2</sup>
<b>Dimensions (W x D x H) &amp; weight</b>	326mm x 599mm x 617mm, 37kg
<b>Finisher MJ-1027</b>	
<b>Trays</b>	2
<b>Capacity &amp; paper weight</b>	Non-sort: Top/bottom bin — 2,000 sheets (A4/B5), 1,000 sheets (A4R/B4/A3/B5R/FOLIO), 500 sheets (A5R), 80g/m <sup>2</sup> Sort/group: Top/bottom bin — 2,000 sheets (A4/B5), 1,000 sheets (A4R/B4/A3/FOLIO), 80g/m <sup>2</sup>
<b>Paper size &amp; weight</b>	A3-A5R, 60-256g/m <sup>2</sup>
<b>Staple capacity</b>	50 sheets (A4/B5, 80g/m <sup>2</sup> )
<b>Staple position</b>	Multi-position (4 kinds)
<b>Dimensions (W x D x H) &amp; weight</b>	616mm x 630mm x 1,023mm, approx. 43kg
<b>Finisher MJ-1028</b>	
<b>Trays</b>	2
<b>Capacity &amp; paper weight</b>	Non-sort: Top/bottom bin — 2,000 sheets (A4/B5), 1,000 sheets (A4R/B4/A3/B5R/FOLIO), 500 sheets (A5R), 80g/m <sup>2</sup> Sort/group: Top/bottom bin — 2,000 sheets (A4/B5), 1,000 sheets (A4R/B4/A3/FOLIO), 80g/m <sup>2</sup>
<b>Paper size &amp; weight</b>	A3-A5R, 60-256g/m <sup>2</sup>
<b>Staple capacity</b>	50 sheets (A4/B5, 80g/m <sup>2</sup> )
<b>Staple position</b>	Multi-position (4 kinds)
<b>Saddle stitch</b>	Paper size: A3-A4R, Staple capacity: 15 sheets (80g/m <sup>2</sup> )
<b>Dimensions (W x D x H) &amp; weight</b>	616mm x 630mm x 1,023mm, approx. 63kg
<b>Hole Punch Unit MJ-6003 (for the MJ-1027/MJ-1028 Finisher)</b>	
<b>Dimensions (W x D x H) &amp; weight</b>	76mm x 615mm x 275mm, approx. 5.4kg
<b>Insert Unit MJ-7001 (for the MJ-1027/MJ-1028 Finisher)</b>	
<b>Stack capacity</b>	100 sheets (80g/m <sup>2</sup> )
<b>Paper size</b>	A3/A4/A4R/B4/B5/304.8mm wide paper
<b>Available paper weight</b>	60-256g/m <sup>2</sup>
<b>Sheet setting</b>	Face up
<b>Dimensions (W x D x H) &amp; weight</b>	533mm x 612mm x 1,072mm, approx. 20kg
<b>Finisher Guide Rail KN-1017</b>	
	Recommended for offices with carpets and other soft flooring to keep the finisher firmly in place. It also serves as a support when separating the finisher from the main unit.

<b>Scrambler Board GP-1040</b>	
<b>Data Overwrite Kit GP-1060</b>	
<b>Parallel Interface Kit GF-1140</b>	
<b>PCI Slot GO-1050</b>	Prerequisite for installation of Fax Board, Scrambler Board and Parallel Interface Kit (Two of these can be installed simultaneously)
<b>Wireless LAN Module GN-1040</b>	
<b>Antenna for Wireless LAN GN-3010</b>	One antenna is required for each of the wireless connectivity options (Wireless LAN operation)

## TOSHIBA ORIGINAL SUPPLIES

It is recommended that only supplies made or designated by TOSHIBA be used for this machine in order to get optimum results.



## ISO 9000 and ISO 14000 Series Certifications

These highly acclaimed certifications are recognized worldwide as measures of top quality and environmental management excellence. They are awarded to manufacturers for facilities and practices meeting strict standards set by the Geneva based International Standardization Organization. To date, all Toshiba TEC manufacturing facilities where copiers, accessories, supplies and parts are produced have received ISO 9000 series certification, while three copier sales affiliates and all Toshiba TEC manufacturing facilities have received ISO 14000 series certification — even more reasons to count on Toshiba.

Microsoft, Windows®, and Windows® NT are registered trademarks of Microsoft Corporation in the United States and/or other countries.  
NetWare® is a registered trademark of Novell, Inc.  
Adobe® PostScript® Level 3™ is a registered trademark of Adobe Systems, Inc.  
Macintosh® is a registered trademark of Apple Computer, Inc.  
All other brand and/or product names are trademarks of their respective owners.

Design and specifications subject to change without notice. The colour(s) of the actual product may vary from the colour(s) shown in this brochure. No part of this material may be used or reproduced in any manner whatsoever without permission. 1 GB is equivalent to 1 billion bytes. Days for function availability may differ by region. "e-filing" is an abbreviation of "electronic filing". Warm-up time and print speed may vary depending on the operating environment. ©2005 TOSHIBA TEC CORPORATION All rights reserved.

As an ENERGY STAR Partner TOSHIBA TEC CORPORATION has determined that this multifunctional device model meets the ENERGY STAR guidelines for energy efficiency.

These multifunctional devices comply with the Wi-Fi standard.



# TOSHIBA

**TOSHIBA (AUSTRALIA) Pty, Ltd.**  
A.C.N. 001 320 421  
84-92 Talavera Road, North Ryde, NSW 2113  
Tel: (02) 9887-6000 Fax: (02) 9888-3037  
**New Zealand office**  
Lvl 5, Building 3, 666 Great South Road, Penrose, Auckland NZ  
Tel: (9) 526-7700 Fax: (9) 526-7753  
<http://www.eid.toshiba.com.au>  
[http://www.toshibatec.co.jp/index\\_e.htm](http://www.toshibatec.co.jp/index_e.htm)



## Free Manuals Download Website

<http://myh66.com>

<http://usermanuals.us>

<http://www.somanuals.com>

<http://www.4manuals.cc>

<http://www.manual-lib.com>

<http://www.404manual.com>

<http://www.luxmanual.com>

<http://aubethermostatmanual.com>

Golf course search by state

<http://golfingnear.com>

Email search by domain

<http://emailbydomain.com>

Auto manuals search

<http://auto.somanuals.com>

TV manuals search

<http://tv.somanuals.com>