

For more information please contact your
Toshiba Partner

Full Colour Multifunctional Network System:

Colour Manager

e-STUDIO Colour Systems from Toshiba



Anderungen der Konstruktionen und technischer Daten ohne Vorankündigung vorbehalten. Abweichungen von den dargestellten Farben sind möglich. Irrtum vorbehalten. Copyright © 2002 TOSHIBA TEC.

TIOECBCol

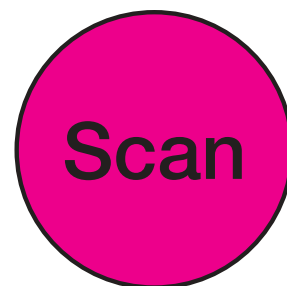
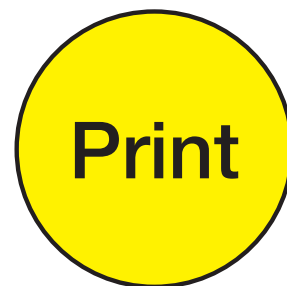
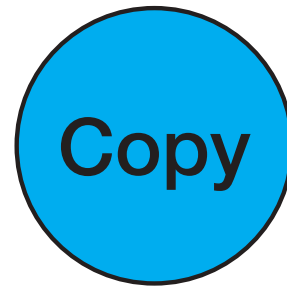
Colour networking needs?

Toshiba has the solution.

Advanced colour capabilities, high volume output, professional results – every business needs more colour these days, but every business user is different. Where can any operation find fast, flexible, high quality customised colour reproduction with network connections? The new Colour Manager e-STUDIO series from Toshiba is the answer.



Including copier, printer, and scanner functions, and capable of high speed output with high volume paper handling, the new Colour Manager series is also equipped with professional finishing options. Advanced colour management and network capabilities allow smooth and easy integration into today's electronic office. So think in colour and ask yourself: what kind of colour user are you? Just use this guide to focus on your needs, and call Toshiba for assistance. Get the customised e-STUDIO colour smart solution that suits your business strategy.



High Volume Colour Output.

Marketing manager at large international corporation.

“Our team is constantly up against deadline pressures, so we need high speed colour output. We're not satisfied with our current colour output device.”

Electronic Sorting and two kinds of finisher for maximum productivity.

The new Colour Manager range achieves effective processing for both copying and printing. It offers **Electronic Sorting** as standard, which means there's no need for a mechanical sorter. Electronic Sorting overcomes the limitations of conventional mechanical sorters by preventing job output from being constrained by the number of bins and allowing continuous document sorting for printing and copying jobs. This is made possible through the Colour Manager's impressive memory capacity which also allows you to scan multiple pages in one go, remove the originals, and even start setting up the next job while the first is being completed.

With the help of the **hole punch unit** and the **finisher with saddle stitch capability**, which can be used in combination with **Magazin Sort**, the new Colour Managers make it easy to create in-house magazines. To support an even higher level of productivity the Colour Manager's **Scan Once/Copy Many** capability realises faster scanning and copying, less noise, and reduced energy consumption. Such advanced memory copy capabilities also enable other useful functions, such as **4-in-1 copying**. In short, the e-STUDIO Colour Manager range satisfies all of your output needs with maximum efficiency –

giving you greater versatility for the copying and printing of single and double sided documents, and the convenience of stapling and hole punching for the production of booklets and other multiple page documents. In fact, the new e-STUDIOS accomplish a level of productivity on a par with monochrome output devices.

Increased speed through high level colour imaging technology.

The sophisticated **Toshiba Inline Colour Printing System** achieves high speed colour copying with efficiency, image stability, and

superb reliability. It involves the simultaneous rotation of four drums, rather than multiple rotations of one. It's an innovative approach which leads to a significantly higher speed of performance. The Colour Manager series also features high speed DCIT (Dual Compression Imaging Technology), which compresses scanned colour images in two stages, maintains high quality images, and works in combination with Electronic Sorting to achieve a significant increase in the processing speed of colour data, which is of course much heavier than monochrome data.



With a maximum possible paper supply of 4,030 sheets from four 600-sheet cassettes, one 1,500-sheet LCF and one 130 sheet Stack Feed Bypass, the Colour Manager can cope with jobs of any size.

Professional Colour Reproduction.

Designer for busy art/ production company.

“I create and oversee production of print ads, brochures, layouts for commercials, etc. So I need colour constantly. Our current colour output device isn't adequate.”



High image clarity, excellent reproduction quality

The e-STUDIO Colour Systems have a number of advanced technologies and features which maximise the level of quality achieved in copying and printing.

- They offer a resolution of **9,600 dpi equivalent 600 x 600 dpi** with 256 gradations. It also delivers exceptional sharpness through use of an image processing algorithm during the copying process, and Toshiba's unique image processing filter during printing. As a result, the Colour Manager range is ideal for highly defined characters and lifelike images with a superior degree of detail.
- **Natural looking images** can be easily produced without excessive glare due to

the advanced toner, developer, drum, and the less oil fusing method. These also make it possible for colour printouts to be written on in ballpoint or highlighting pen.

- **Stable image quality** is maintained throughout large volume colour print runs, thanks to Toshiba's image quality control system and its optimising algorithm. This innovative technology allows the accurate reproduction of originals to an infinite extent.
- Various modes ensure the best possible quality for different kinds of documents. **Text mode** produces the utmost in text sharpness and clarity, while **Text/Photo mode** is a default setting which balances the best possible quality of both text and graphics. **Photo mode** reproduces the continuous tones of the original photo with a higher level of sensitivity, and **Printed**

Image mode is ideal for reproduction of photo image on printed materials. **Map mode** is capable of capturing even the smallest details when working with maps. The **AI (Advanced Image) mode** automatically distinguishes each different element within a single sheet and selects the appropriate mode for the reproduction of each element as a result.

Variety of paper sizes, stock, and OHP sheet capabilities

The reproduction of full page A3 documents from edge to edge can be done with the **A3+ wide paper capabilities**, making it ideally suited to the printing of large scale documents such as posters and catalogues. Paper versatility also extends beyond size, with more options in terms of stock and **Thick Paper mode** capable of handling a variety of papers up to 256 gr/m². More pleasing results can be achieved when producing **OHP sheets**, due to the incorporation of a highly developed toner and a less oil fusing method which helps to eliminate glare, while enhancing toner stability. Incorporation of the belt fusing method also ensures the optimal fixation of toner. Additionally, areas of vivid colour can be produced while retaining a high level of transparency, for the utmost in presentation quality.

Increased demands, refined colour requirements.

Owner of an expanding retail company.

“We need to produce a greater volume of materials, and refine our colour documents. We're just learning about colour MFP (Multi Function Peripheral) capabilities.”

Network scanning functions

Scanning is easy with an e-STUDIO Colour Manager and its various features for increased scanning versatility. **TWAIN scanning** allows scanned data to be imported into compatible applications such as Adobe Photoshop®. The e-STUDIO Colour Systems also support **Scan to Queue**, allowing you to temporarily save scanned data in the HDD of the Fiery® Controller. Scanned data can also be combined with files created in different applications using DocBuilder™. Additionally, the Colour Manager series supports **Scan to Mailbox**, which allows data to be stored in the Fiery® Controller and accessed from any PC in the network, and **Scan to Email**, which lets you scan documents and send them directly from the Colour Manager. Scan to Mailbox and Scan to Email support the conversion of files into TIFF, JPEG, and PDF formats.

Easy operation, user friendly controls, trouble-free replenishment

The new e-STUDIO Colour Manager range is just as easy to operate as a normal black and white MFP. Its user friendly control panel has a convenient **touch screen**, with well proportioned buttons for frequently used functions. Control of stapling and the hole punch unit is simplicity itself, with icon based

operation, and even colour adjustment and operation of the printer driver can be done with speed and minimal effort. The reliable Colour Manager series is not only easy to handle during normal operation. Its **toner cartridge** has also been designed for simple replenishment, which helps you to maintain productivity levels through reduced downtime and even lets you keep your hands clean!

Easy cost management

The e-STUDIO Colour Systems are the obvious choice for the manager who requires cost effective operation without compromising speed and versatility. For copy jobs, its **Access Code function** saves time in the calculation of cost by department. It allows you to instantly and accurately gauge the

number of monochrome and colour copies for each department, and even lets you limit the number of copies accordingly. Department management list provides you with a detailed printout of the printing activities of each department, allowing you to identify where the best savings can be made. For print jobs, the Fiery® Controllers also record a log of output which can be sorted by the client. And an even higher degree of printing restriction can be achieved with **Member printing***, which allows access only to those holding the appropriate password. Finally, even the cost of supplies are minimised, a prime example of which is the use of **ACS (Auto Colour Selection) mode**, which allows monochrome originals to be distinguished automatically and reproduced with black toner only.

* May not be supported by earlier versions of Fiery® Controller. Availability may differ between regions. Please consult your local Toshiba representative for details.



Simple replenishment of each toner cartridge.

Toshiba quality for expanding needs.

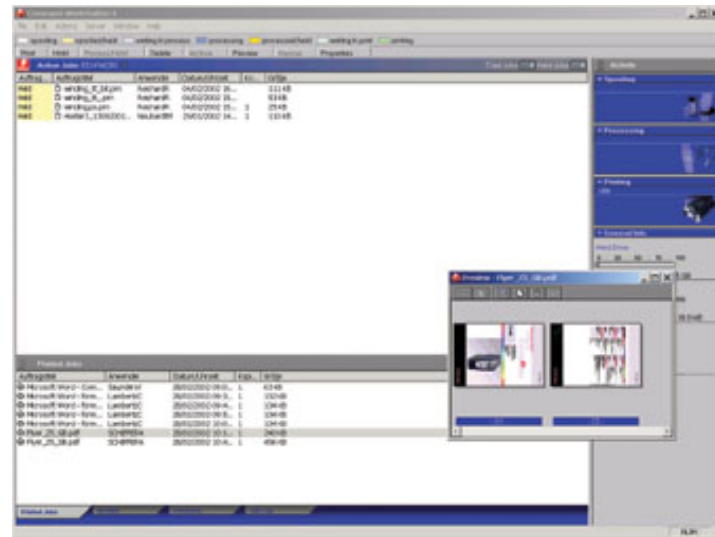
EFI Fiery® Controller

When used with the Fiery® Controller, the e-STUDIO Colour Manager offers standard support of a 10/100 Base-T or optional Token Ring, as well as TCP/IP and IPX/SPX protocols. It can also communicate with Windows®, Macintosh®, and various network environments. Select the controller best suited to your particular network management and job control needs: the built-in, cost effective convenience of the Fiery® X3e+, or the enhanced performance of the Fiery® Z5 standalone unit.

Both units allow the functions of a Colour Manager to be shared across workgroups, different departments, and the Internet. They support a higher level of productivity, advanced document management, seamless networking, and the assured quality of colour and monochrome images.

The Fiery® X3e+ Colour Controller realises the highest level of quality colour output of any entry level embedded solution, while its performance makes for simple short run digital colour printing. It also has a print driver with a user friendly interface, which gives users simple, remote access to a variety of Colour Manager and Fiery® functions from their PCs, including secure printing and N-in-1 printing.

For those requiring the absolute utmost in performance, selection of the **Fiery® Z5** Controller is a must. It is ideally suited to mid-range and production printing and combines performance and dependability with outstanding colour quality. The Fiery® Controller also has **network scanning** capabilities (see previous page).



Note: Fiery® Controller features may not be supported by earlier versions of Fiery® Controller. Availability of Fiery® Controller features may differ between regions. Please consult your local Toshiba representative for details.

Command WorkStation

For additional network convenience, the e-STUDIO Colour Manager series features Command WorkStation. It allows simultaneous access to various operations and settings of the Fiery® Controller, such as management/ operation of print job, Fiery® controller setting, Fiery® utility startup and font management.

FreeForm2

Produce swift print runs of documents with each page containing both common and variable elements. FreeForm2 allows common elements to be RIP processed just once and then stored in the Fiery® Controller, while variable elements are automatically replaced for each page. For example, FreeForm2 assists you with direct forms of marketing such as direct mail, as it allows you to send large amounts of mail sharing the same graphics or contents, yet containing personalised elements specific to each recipient.

DocBuilder™ and optional DocBuilder™ Pro

Document editing and job control are made easier with DocBuilder™. It allows you to work with the added convenience of thumbnail view for easier document direction, while pages made by different applications, or scanned images, can be pasted into one document with simple operation. Installation of the optional DocBuilder™ Pro additionally offers professional design capabilities for the easy creation of booklets and magazines.

WebTools™

Your Colour Manager can be monitored through use of WebTools™. Operating efficiency, printing conditions, and optional attachments can all be checked with remote access to ensure peak efficiency is maintained.

Free Manuals Download Website

<http://myh66.com>

<http://usermanuals.us>

<http://www.somanuals.com>

<http://www.4manuals.cc>

<http://www.manual-lib.com>

<http://www.404manual.com>

<http://www.luxmanual.com>

<http://aubethermostatmanual.com>

Golf course search by state

<http://golfingnear.com>

Email search by domain

<http://emailbydomain.com>

Auto manuals search

<http://auto.somanuals.com>

TV manuals search

<http://tv.somanuals.com>