

# QUICK START

32/40/50L1400U (United States model)

32/40/50L1400UC (Canada model)

32/40/50L1400UM (Mexico model)

## Unpack the box

1. Remove the components and TV from the box. Save the packing materials in case you need them later.
2. Remove the documentation for important information.

**CAUTION** The Resource Guide contains important safety precautions not included in this document. Please review completely prior to using this product. Complete instructions are contained in the User's Guide located on Toshiba's web site at:  
**For United States: support.toshiba.com**  
**For Canada: www.toshiba.ca/support/ceg**  
**For Mexico: http://www.toshiba.com.mx/tdmConsumo/Informacion/Contacto.aspx?ID=SPT"**

### Notice

- **Subject to Change.** Product specifications, configurations, prices, system/component/options availability are all subject to change without notice.

### NOTE

A High-Definition signal is needed to receive a High-Definition picture. Once you have a High-Definition signal you need to connect it to a High-Definition input on your TV. Not all channels are currently broadcasting in HD. Standard analog TV channels and HD channels, even on the same network, broadcast on different channels. (Example: ABC analog may be on channel 4, while ABC-HD may be on channel 104.)

## Check the components

### Your TV comes with:

- Remote control and batteries
- Several documents, including the Resource Guide, and Standard Limited Warranty.
- Pedestal stand and hardware
- All other cables and adapters are sold separately.
- If any items are missing or damaged, notify your dealer immediately.

- For the United States, the Standard Limited Warranty is located at [support.toshiba.com/warranty](http://support.toshiba.com/warranty).
- For Canada, the terms and conditions of the Limited One (1) Year Warranty on Parts and Labour can be found at [www.toshiba.ca/support](http://www.toshiba.ca/support) Click on Televisions, Select Warranty, then Select Standard Warranty & Service Plans and Select Flat Panel Television (bilingual)

### Get detailed product information:

L1400U series: A comprehensive User's Guide for your model is available at [support.toshiba.com](http://support.toshiba.com), as well as up-to-date product information.  
 L1400UC series: For up-to-date product information, visit [www.toshiba.ca/support/ceg](http://www.toshiba.ca/support/ceg)  
 For detailed product specifications, **Select Product**, then **select Model** and **select Model Number**.  
 L1400UM series: A comprehensive User's Guide for your model is available at [http://www.toshiba.com.mx/tdmConsumo/Informacion/Contacto.aspx?ID=SPT"](http://www.toshiba.com.mx/tdmConsumo/Informacion/Contacto.aspx?ID=SPT)

## Choosing a location for your LED TV

### To display your TV on the included Pedestal Stand:

Observe the following safety precautions:

1. Read and follow the pedestal assembly instructions section in this document

**CAUTION** Before beginning pedestal assembly, carefully lay the TV facedown on a flat, cushioned surface such as a quilt or blanket. Leave the bottom of the unit protruding over the edge of the surface and assemble the pedestal as indicated below.

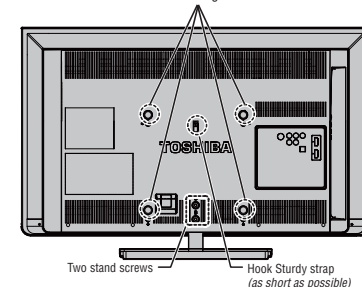
**NOTE** Extreme care should always be used when attaching or removing the pedestal stand to avoid damage to the display panel.

2. Assemble the pedestal stand with the hardware provided.
3. After assembling the pedestal, place the TV on a sturdy, level surface that can support the weight of the TV.
4. Be sure to secure the TV to a wall stud, pillar, surface, or other immovable structure.

**CAUTION** Always place the TV on a sturdy, level, stable surface that can support the weight of the unit. Secure the TV using one of the following methods:

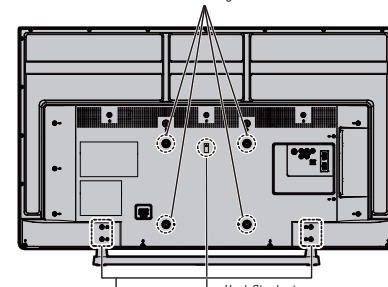
- (1) Secure the TV with a mounting screw (Recommended).
  - Place the TV on a sturdy surface that has a sufficient thickness and screw the unit on the surface securely by using the mounting screw and the fall-prevention screw hole.
  - If secured to furniture or other movable objects, the furniture must be secured to an immovable structure using the method shown in item 2 below.
- (2) Secure the TV with a sturdy strap to a wall stud, pillar, or other immovable structure. When connecting the strap:
  - attach the strap to the TV using the hooks on the back of the TV, the clips on the pedestal, or the hole in the base of the pedestal as available.
  - make sure the strap is tight, secure, and parallel to the floor.

32" TV VESA Mounting Pattern



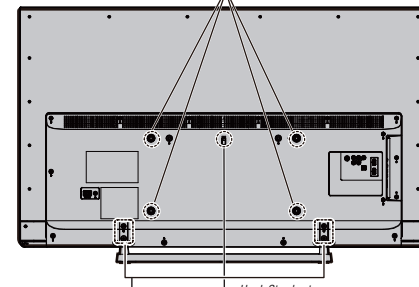
(Sample illustration)

40" TV VESA Mounting Pattern



(Sample illustration)

50" TV VESA Mounting Pattern



(Sample illustration)

### To display your TV using a Wall Bracket:

Be sure to remove the pedestal stand before mounting your TV with a wall bracket. Always use a wall bracket Listed by an independent laboratory (such as UL, CSA, ETL) that is appropriate for the size and weight of the TV:

**CAUTION** Two people are required for installation to avoid injury or damage to the TV.

1. Unplug and remove any cables and/or other component connectors from the rear of the TV.
2. Follow the instructions provided with your wall bracket. Before proceeding, make sure the appropriate bracket(s) are attached to the wall and the back of the TV as described in the instructions provided with the wall bracket.

**NOTE** Always use the screws supplied or recommended by the wall mount manufacturer.

### VESA Mounting Pattern

TV Size	Hole Pattern (H x V)	Screw Size
32"	200mm x 200mm	M6
40"	200mm x 200mm	M6
50"	400mm x 200mm	M8

## Pedestal Assembly Instructions

**WARNING** To prevent possible electric shock, protect the power cord from being pinched when attaching the pedestal stand.

**NOTE** Extreme care should always be used when attaching the pedestal stand to avoid damage to the LCD panel.

For safety information, please review the User's Guide online:

For United States: [support.toshiba.com](http://support.toshiba.com)

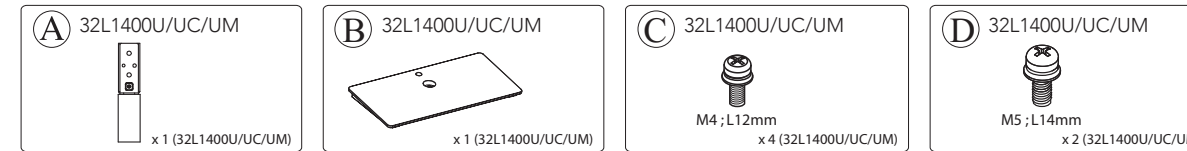
For Canada: [www.toshiba.ca/support/ceg](http://www.toshiba.ca/support/ceg)

For Mexico:

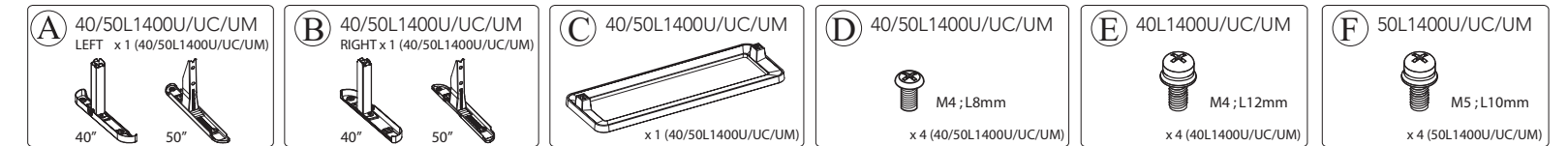
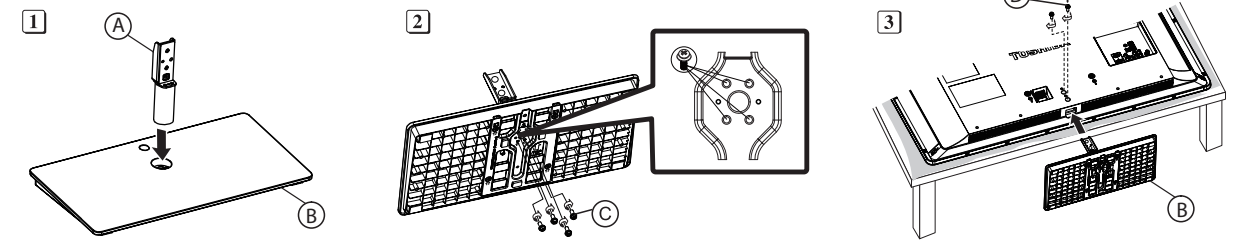
[http://www.toshiba.com.mx/tdmConsumo/Informacion/Contacto.aspx?ID=SPT"](http://www.toshiba.com.mx/tdmConsumo/Informacion/Contacto.aspx?ID=SPT)

**CAUTION** Before beginning pedestal assembly, carefully lay the front of the LCD Panel face down on a flat, cushioned surface such as a quilt or blanket. Leave the bottom of the unit protruding over the edge of the surface and assemble pedestal as indicated below.

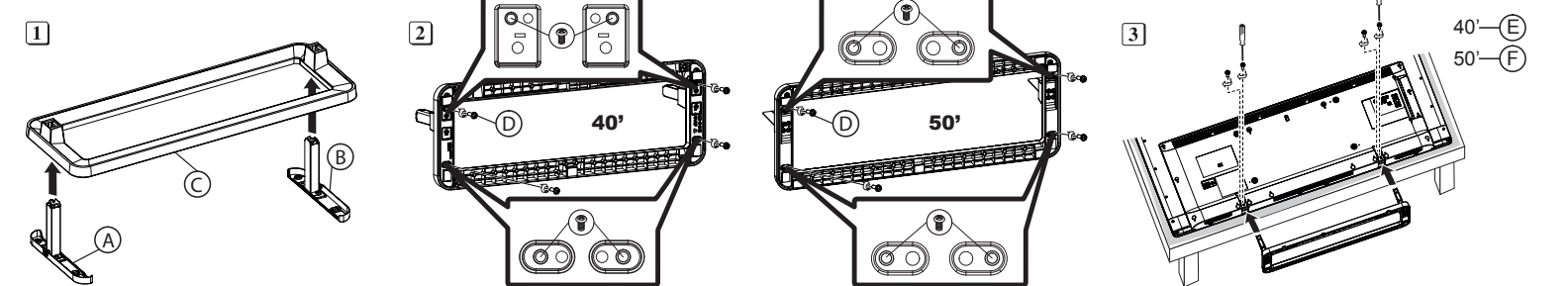
**CAUTION** Two people are required for installation to avoid injury or damage to the TV.



### 32L1400U/UC/UM model



### 40/50L1400U/UC/UM model



## Register Your Toshiba Television

Enhance your ownership experience by taking a few minutes to register your Toshiba product at [register.toshiba.com](http://register.toshiba.com) (for L1400U and L1400UM series) or [support.toshiba.ca/warranty/](http://support.toshiba.ca/warranty/) (for L1400UC series). Completing product registration allows Toshiba to provide you with product information updates, special offers and promotions. Failure to complete product registration will not diminish your rights under the Standard Limited Warranty.



## Please Do The Following Before Returning This Product To The Store.

If you are experiencing a technical problem or have questions regarding operation, authorized service centers, warranty or parts, please contact our Customer Support Center at:

**For L1400U series (United States model):**  
 (800) 631-3811 From Inside the United States  
 (949) 583-3050 From Outside the United States

**For L1400UC series (Canada model):**  
 1-800-268-3404 From within Canada

**For L1400UM series (Mexico model):**  
 9126-5165 and 9126-5166 for Mexico  
 01-800-712-67-64 lada 800 for Mexico

Many questions regarding parts, service, and warranties can be answered by visiting the Customer Support Section of our website:  
**L1400U series: [support.toshiba.com](http://support.toshiba.com)**  
**L1400UC series: [www.toshiba.ca/support/ceg](http://www.toshiba.ca/support/ceg)**  
**L1400UM series: [http://www.toshiba.com.mx/tdmConsumo/Informacion/Contacto.aspx?ID=SPT"](http://www.toshiba.com.mx/tdmConsumo/Informacion/Contacto.aspx?ID=SPT)**

**THANK YOU**

## Receiving an HDTV Signal

There are three basic ways to receive an HDTV signal on your new TV:

- 1. Over-the-Air (Antenna)**  
Connect a high quality outside antenna (not supplied) directly to the antenna input on the TV (reception cannot be guaranteed and is based on proximity to the local signal).
- 2. Cable or Phone Company HDTV Service**  
Cable or phone company HDTV service customers will need to subscribe to High-Definition service from your local provider. (Additional monthly subscription cost may apply).
- 3. Satellite**  
Satellite customers will need a High-Definition satellite receiver and appropriate dish hardware. (Additional monthly subscription cost may apply).

## Connecting to a High-Definition Input on your TV

You can connect directly from an antenna, or if you are using an HD cable box or HD satellite box, there are three standard connections that can be used to receive an HD signal.

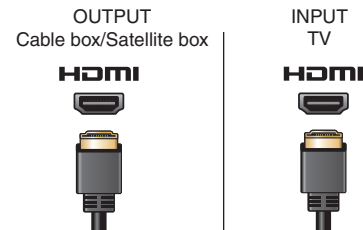
### 1. Antenna Input

To connect directly from an antenna or basic cable: connect the cable directly to the antenna input on the back of the TV.



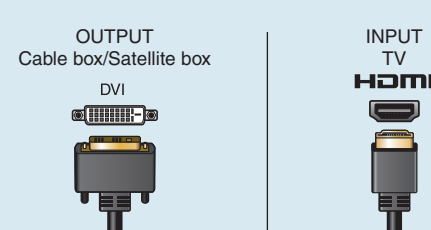
### 2. HDMI® to HDMI®

HDMI® is the best connection for HDTV. This is a digital connection that carries both digital video and digital audio.



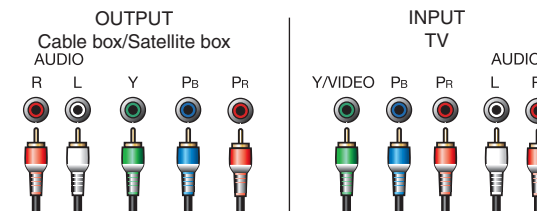
### 3. DVI to HDMI®

Your HD cable box or HD satellite receiver may have a DVI connection. This will be connected to the HDMI® jack on the TV using an HDMI® cable and an HDMI® to DVI converter. DVI carries digital video only.

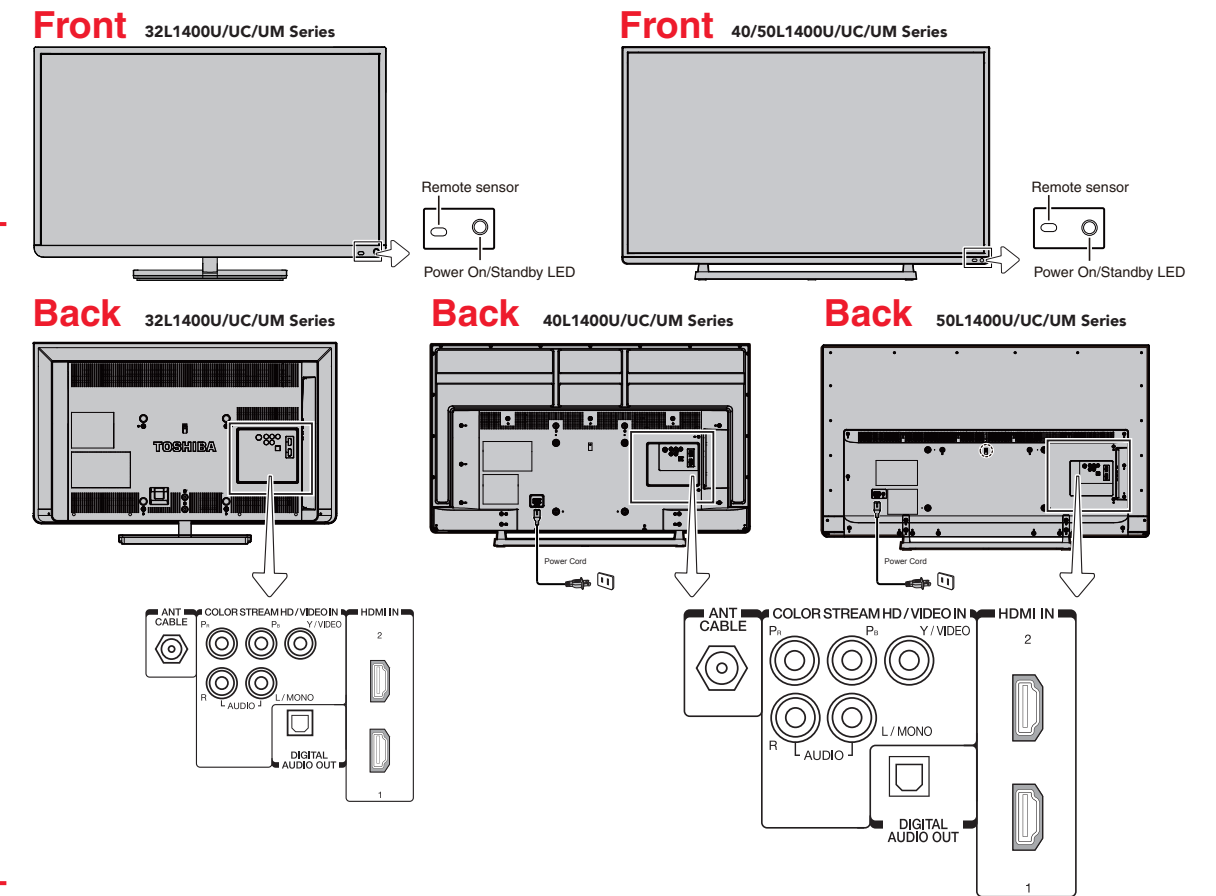


### 4. Component Video Input

ColorStream™ HD component may also be used to receive HDTV. Use if no HDMI® or DVI jack is available. There are three jacks color-coded with red-green-blue on the back of the TV and HD cable box or HD satellite receiver. This connection will require a separate analog audio connection (use the red and white audio connections).



## Quick Tour



## Initial Setup

You must select a **Language**, either **Home/Store** mode, before you can exit out of the Setup Menu. The **EXIT** button will not function until these selections have been made.

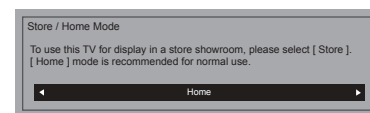
- 1. Menu Language**  
Select a language.



- 2. Time Zone**  
Select a time zone.  
Press **ENTER**.



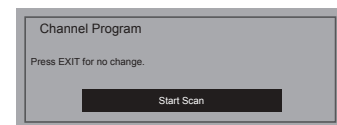
- 3. Store / Home Mode**  
Select Store or Home Mode.  
Press **ENTER**.



- 4. ANT/CABLE in**  
Select Antenna or Cable.  
Press **ENTER**.

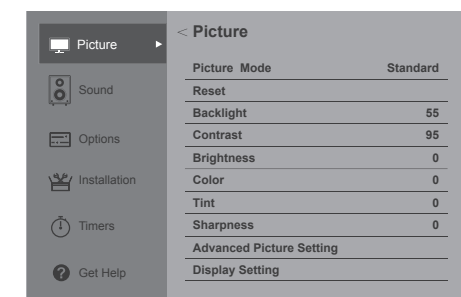


- 5. Start Scan**  
Select **Start Scan**.  
Press **ENTER**.



**NOTE** If you want to stop scanning, press **EXIT** while scanning.

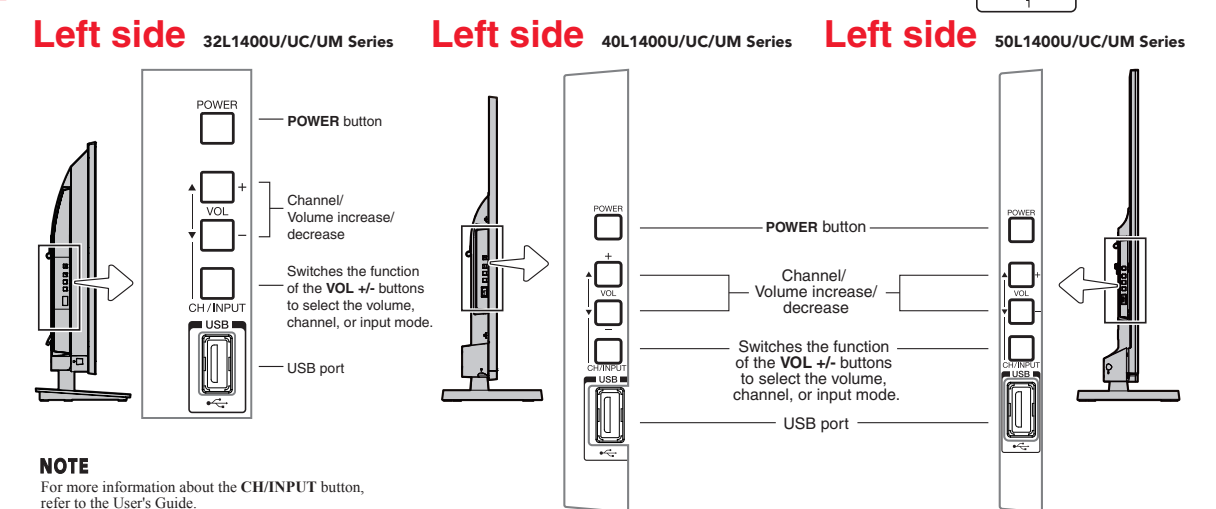
## Navigating the menu system



(Sample Image)

You can use the buttons on the remote control to access and navigate your TV's onscreen menu system.

- Press **MENU** to open the menu system.
- When a menu is opened, use the arrow buttons (**▲▼◀▶**) on the remote control, to move in the corresponding direction in the menu.
- Press **ENTER** to save your menu settings or select a highlighted item. (A highlighted menu item appears in a different color in the menu).
- All menus close automatically if you do not make a selection within 60 seconds.
- To close a menu instantly, press **EXIT**.



**NOTE**  
For more information about the CH/INPUT button, refer to the User's Guide.

## Need Help? Most problems are easy to correct. Save time with one of these simple solutions

### Consult the electronic User's Guide

L1400U series: To access the electronic User's Guide please visit [support.toshiba.com](http://support.toshiba.com)  
Type in your product model or serial number, press **GO**, and then click Manuals & Specs.  
L1400UC series: To access the electronic User's Guide please visit [www.toshiba.ca/support/ceg](http://www.toshiba.ca/support/ceg)  
L1400UM series: To access the electronic User's Guide please visit <http://www.toshiba.com.mx/tmConsumo/Informacion/Contacto.aspx?ID=SPT>

### Visit Toshiba's Support Web site

L1400U series: [support.toshiba.com](http://support.toshiba.com)  
L1400UC series: [www.toshiba.ca/support/ceg](http://www.toshiba.ca/support/ceg)  
L1400UM series: <http://www.toshiba.com.mx/tmConsumo/Informacion/Contacto.aspx?ID=SPT>

### Call Toshiba Customer Support Center

If you are experiencing a technical problem or have questions with regards to operation, authorized service centers, warranty or parts, Toshiba Customer Support Center is ready to help.  
L1400U series: (800) 631-3811 From inside the United States (949) 583-3050 From outside the United States  
L1400UC series: 1-800-268-3404 From within Canada  
L1400UM series: 9126-5165 and 9126-5166 For Mexico 01-800-712-67-64 lada 800 For Mexico

ColorStream is a trademark of Toshiba America Information Systems, Inc. The terms HDMI and HDMI High-Definition Multimedia Interface, and the HDMI Logo are trademarks or registered trademarks of HDMI Licensing LLC in the United States and other countries. All other brand and product names are trademarks or registered trademarks of their respective companies.

Printed on recycled paper

**TOSHIBA**  
Leading Innovation >>>

©2013 Toshiba America Information Systems, Inc. • GMA501281011 • 12/13

## Free Manuals Download Website

<http://myh66.com>

<http://usermanuals.us>

<http://www.somanuals.com>

<http://www.4manuals.cc>

<http://www.manual-lib.com>

<http://www.404manual.com>

<http://www.luxmanual.com>

<http://aubethermostatmanual.com>

Golf course search by state

<http://golfingnear.com>

Email search by domain

<http://emailbydomain.com>

Auto manuals search

<http://auto.somanuals.com>

TV manuals search

<http://tv.somanuals.com>