

FIELD REPLACEABLE UNIT DOCUMENTATION

Satellite™ **1800 Series**

GENERAL INFORMATION

Tools Required for Proper Disassembly and Reassembly:

- 1. Phillips Screwdriver (Size 1)**
- 2. 5mm Flat head Screwdriver**
- 3. Case Separator**
- 4. ESD Wrist Strap**
- 5. ESD mats**
- 6. Tweezers**

Before attempting any of the following procedures, make sure that the main battery and AC adaptor is not connected to the unit and the environment in which you are working on is protected from Electro-Static Discharge(ESD).

FIELD REPLACEABLE UNIT DOCUMENTATION

SatelliteTM **1800 Series**

TABLE OF CONTENTS:

- 1. BATTERY PACK REMOVAL**
- 2. OPTIONAL PC CARD REMOVAL**
- 3. HDD REMOVAL**
- 4. MEMORY MODULE REMOVAL**
- 5. MINI PCI CARD REMOVAL**
- 6. MODEM BOARD REMOVAL**
- 7. KEYBOARD REMOVAL**
- 8. IPS SWITCH REMOVAL**
- 9. COOLING MODULE REMOVAL**
- 10. CPU REMOVAL**
- 11. DVD-ROM/CD-ROM DRIVE REMOVAL**
- 12. TOP COVER REMOVAL**
- 13. HDD/BATTERY BOARD REMOVAL**
- 14. RTC BATTERY REMOVAL**
- 15. VOLUME CONTROL BOARD REMOVAL**
- 16. SPEAKERS REMOVAL**
- 17. FDD REMOVAL**
- 18. LED BOARD REMOVAL**
- 19. SYSTEM BOARD REMOVAL**
- 20. 13.3" DISPLAY MASK REMOVAL**
- 21. FL INVERTER AND 13.3" LCD REMOVAL**
- 22. 14" DISPLAY MASK REMOVAL**
- 23. FL INVERTER AND 14" LCD REMOVAL**

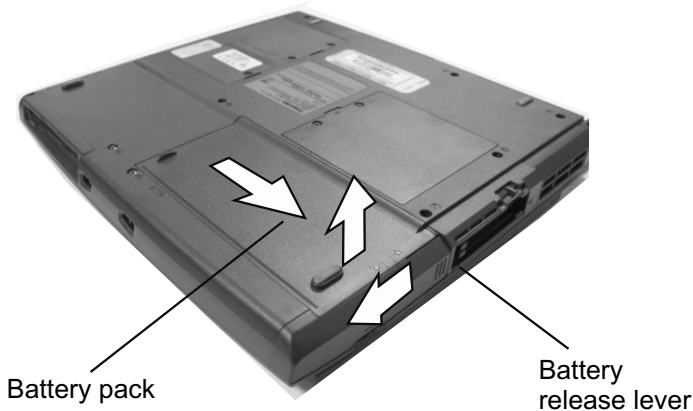
TOSHIBA

Tough Enough for Today's World

FIELD REPLACEABLE UNIT DOCUMENTATION

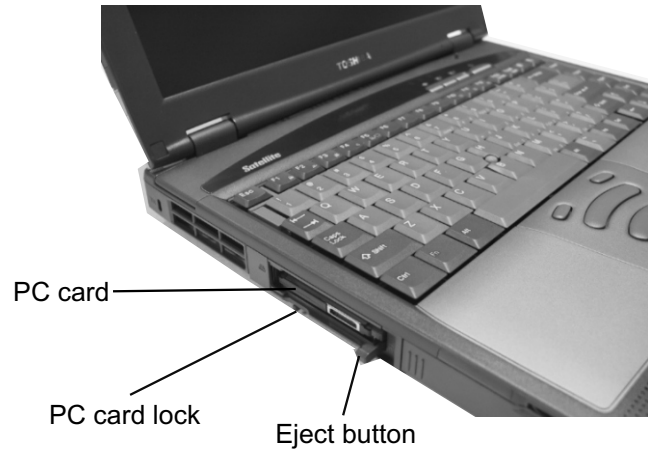
SatelliteTM 1800 Series

BATTERY PACK REMOVAL



1. Turn the computer upside down as shown.
2. Slide the **battery release lever** in the direction of the arrow.
3. Slide the **battery pack** to the right and lift it out.

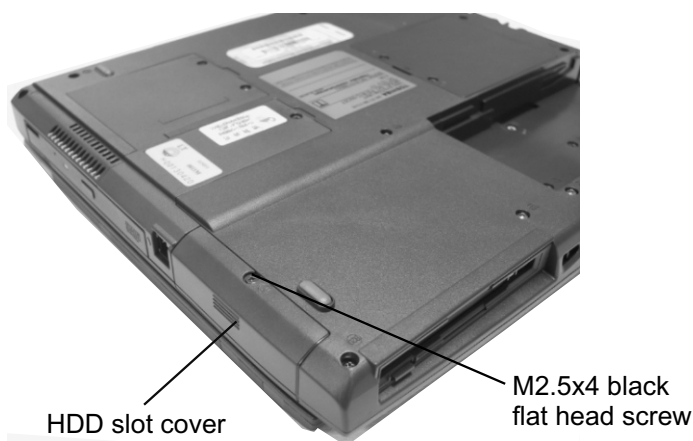
OPTIONAL PC CARD REMOVAL



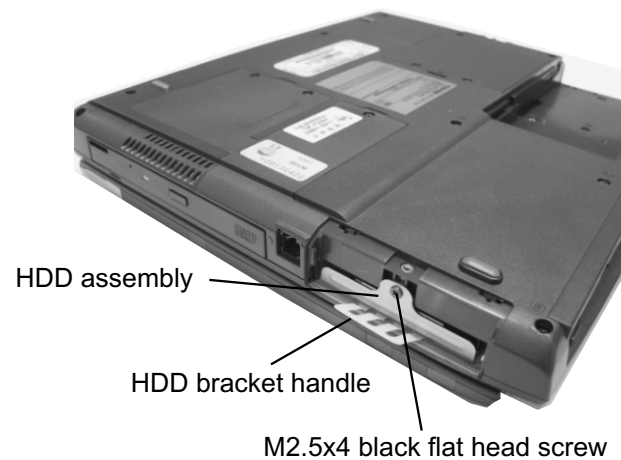
1. Slide the **PC Card lock** to unlock position
2. Press the **eject button** to pop it out.
3. Press the **eject button** and remove the **PC card**.

NOTE: Before removing any PCCARD device, make sure it is "STOPPED" in the PC Card Manager.

HDD REMOVAL



1. Turn the computer upside down.
2. Remove **one M2.5x4 black flat head screw** securing HDD slot cover and pull out the **cover**.

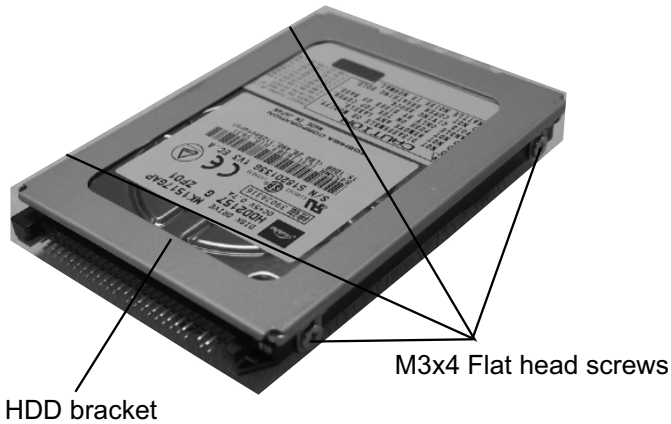


3. Remove **one M2.5x4 black flat head screw** securing the HDD assembly.
4. Grasp the **HDD bracket handle** and pull to disconnect the HDD assembly.
5. Lift the **HDD assembly** out of the HDD bay.

FIELD REPLACEABLE UNIT DOCUMENTATION

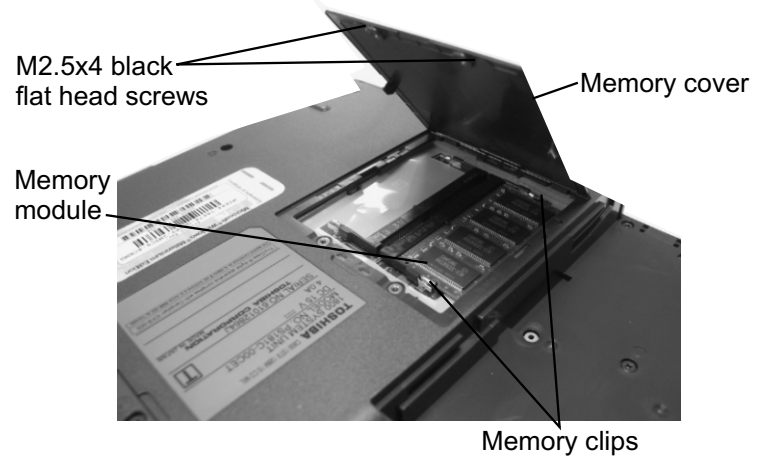
Satellite™ 1800 Series

HDD REMOVAL



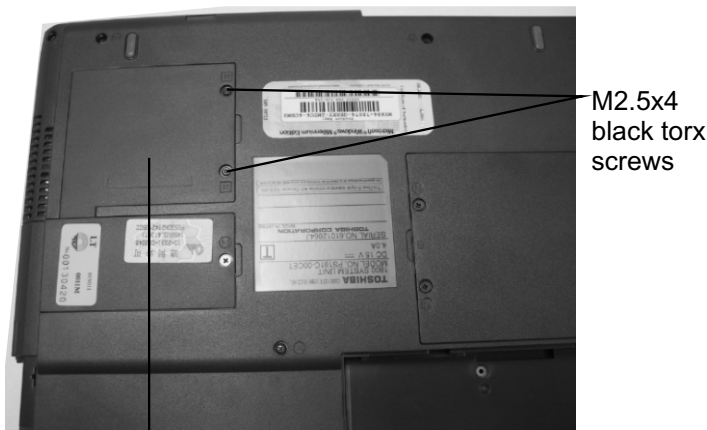
6. Remove **four M3x4 flat head screws** securing the HDD bracket to the drive.

MEMORY MODULE REMOVAL

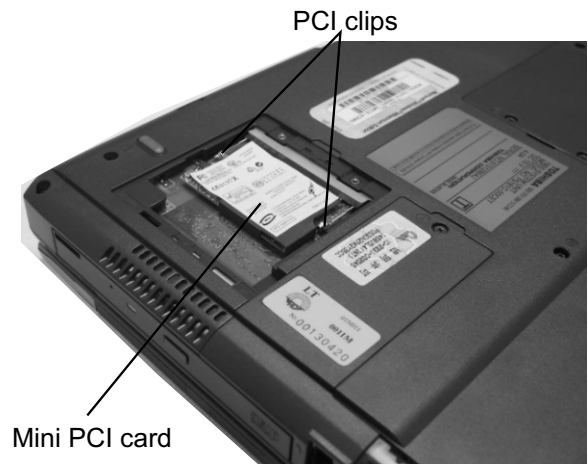


1. Turn the computer upside down.
2. Remove **two M2.5x4 black flat head screws** and remove the **memory cover**.
3. Push the **memory clips** outward and pull the **memory module** out of the connector on a 30 degree angle.

MINI PCI CARD REMOVAL



1. Turn the computer upside down.
2. Remove **two M2.5x4 black torx screws** securing the mini PCI slot cover.



3. Push the **mini PCI slot clips** outward and pull the **mini PCI card** out of the connector on a 45 degree angle.

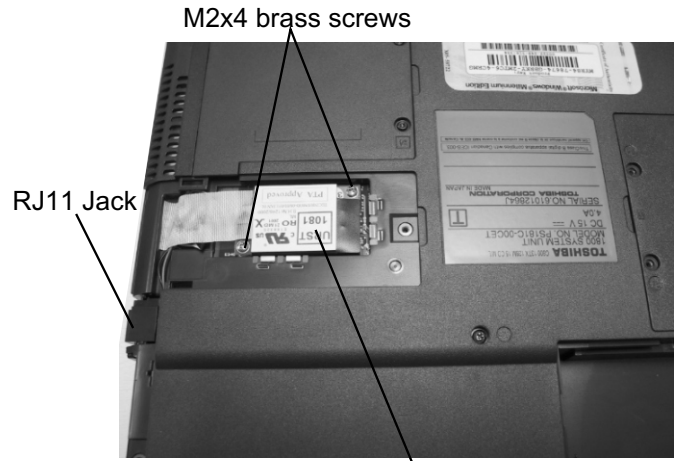
FIELD REPLACEABLE UNIT DOCUMENTATION

Satellite™ 1800 Series

MODEM REMOVAL

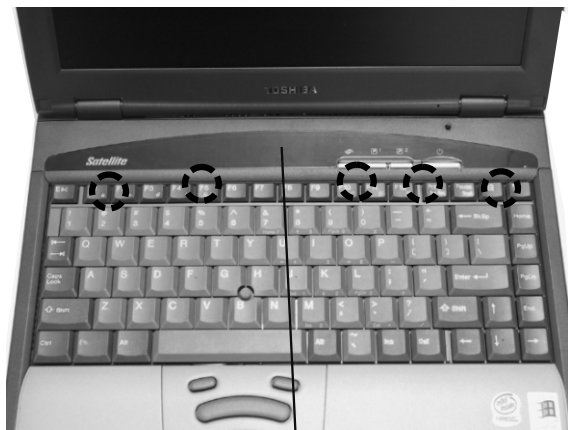


- Modem slot cover M2.5x4 black flat head screw
1. Remove **one M2.5x4 black flat head screw** securing the modem slot cover.
 2. Insert the case separator into the notched side of the cover and lift up to release the two latches securing the left side of the **modem slot cover**.



- M2x4 brass screws
- RJ11 Jack
- Modem
3. Remove the **glass tape** securing the RJ-11 jack cable.
 4. Remove **two M2x4 brass screws** securing the modem board.
 5. Lift up the **modem board** to disconnect it from the system board.
 6. Remove the **RJ-11 jack** from the modem board.

KEYBOARD REMOVAL

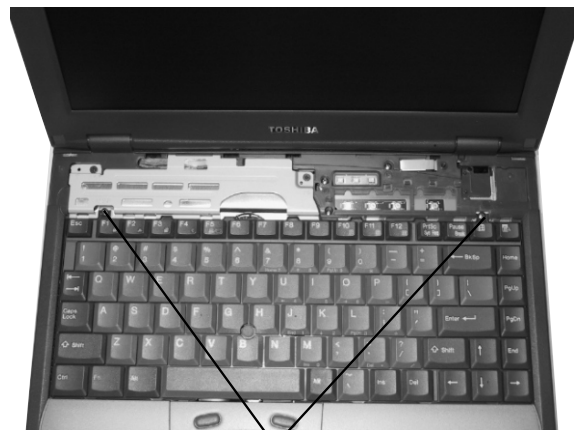


Keyboard holder

1. Open the display panel.
2. Remove the **Keyboard holder** at the top of the keyboard.



Latch



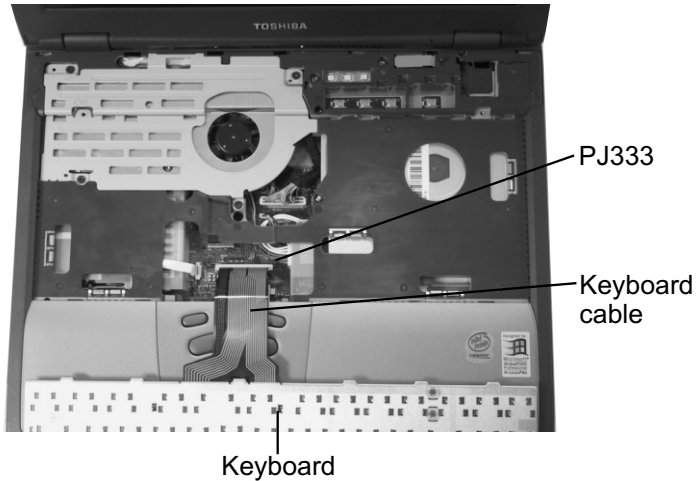
M2.5x2.6 black screws

3. Remove **two M2.5x2.6 black screws** securing the keyboard.

FIELD REPLACEABLE UNIT DOCUMENTATION

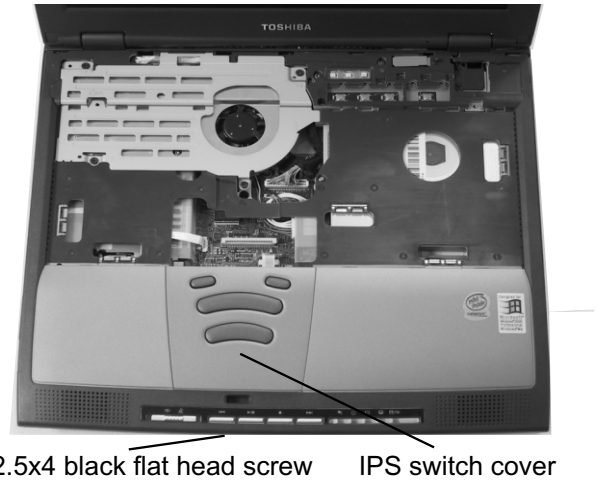
Satellite™ 1800 Series

KEYBOARD REMOVAL



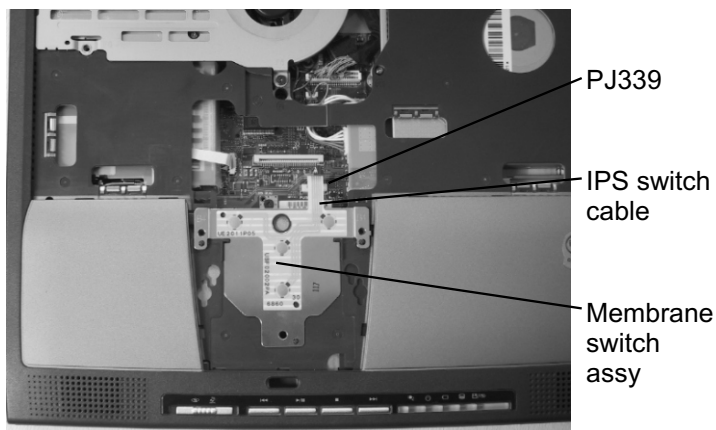
4. Lift out the **keyboard** and set it on the palm rest.
5. Disconnect the **keyboard cable** from **PJ333** on the system board and lift out the **keyboard**.

IPS SWITCH REMOVAL



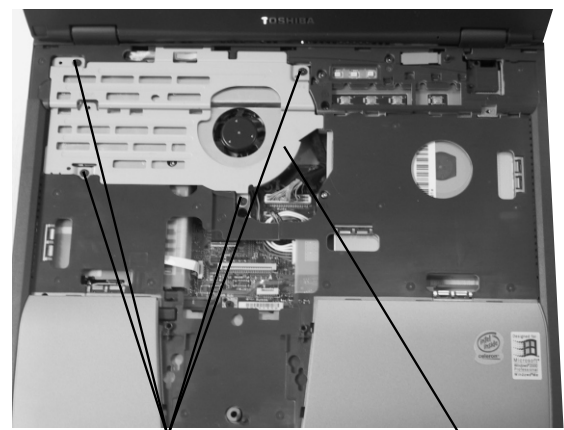
1. Remove **one M2.5x4 black flat head screw** securing the IPS switch cover(touchpad) from the battery compartment.
2. Remove the **IPS switch(touchpad) cover** from the palm rest.

IPS SWITCH REMOVAL



3. Disconnect the **IPS switch cable** from **PJ339** on the system board and lift out the **membrane switch assembly**.

COOLING MODULE REMOVAL

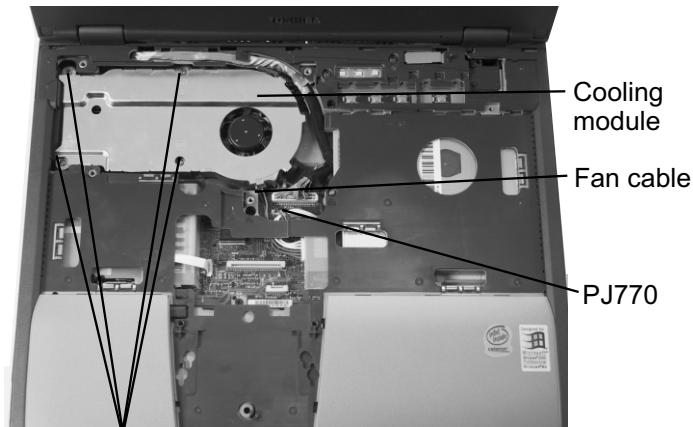


1. Remove **four M2.5x6 black flat head screws** securing the heat sink plate.
2. Lift out the **heat sink plate**.

FIELD REPLACEABLE UNIT DOCUMENTATION

Satellite™ 1800 Series

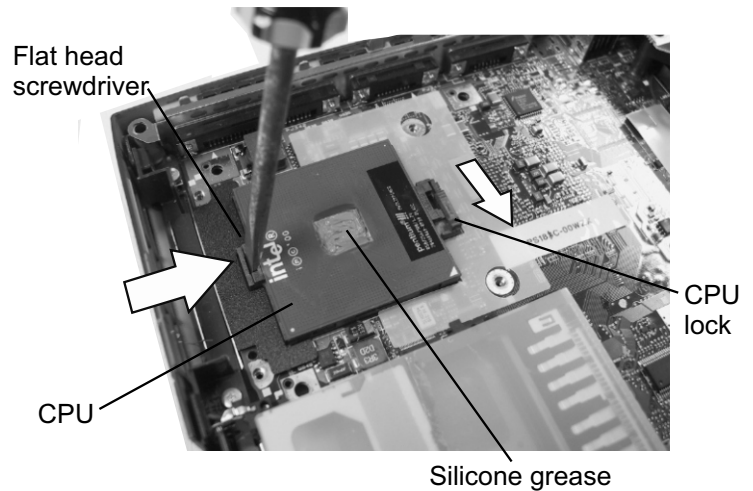
COOLING MODULE REMOVAL



M2x16 brass screws

3. Remove **four M2x16 brass screws** securing the cooling module.
4. Disconnect the **fan cable** from **PJ770** from the system board and lift out the Fan module.

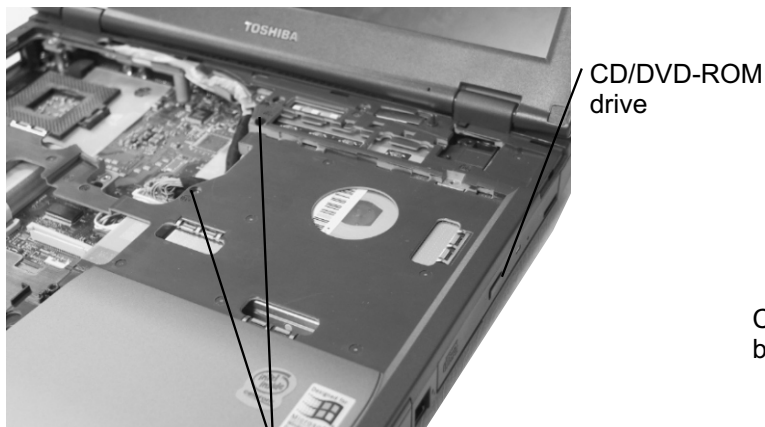
CPU REMOVAL



5. Slide the **CPU lock** in the direction of the arrow.
6. Insert a **5mm flat head screwdriver** on the top side of the CPU socket and push the socket in the direction of the arrow and lift out the CPU.

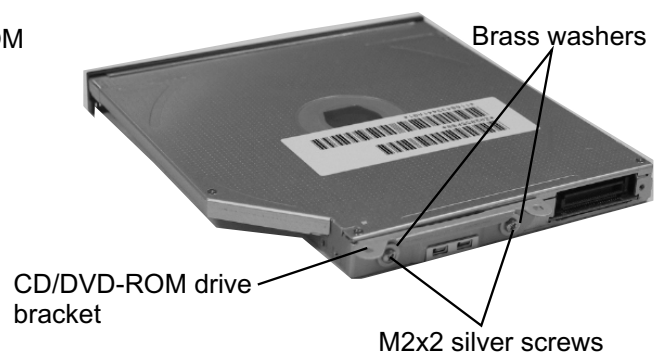
NOTE: When installing the CPU make sure that a silicone grease is applied before attaching the cooling module. Please refer to FSB-200112 for the complete procedures on how to apply the silicone grease.

CD-ROM/DVD ROM DRIVE REMOVAL



M2x5.5 silver screws

1. Remove **two M2x5.5 silver screws** securing the CD-ROM/DVD ROM drive.
2. Slide the **CD/DVD-ROM drive** to the right to disconnect it from **PJ321** on the system board.

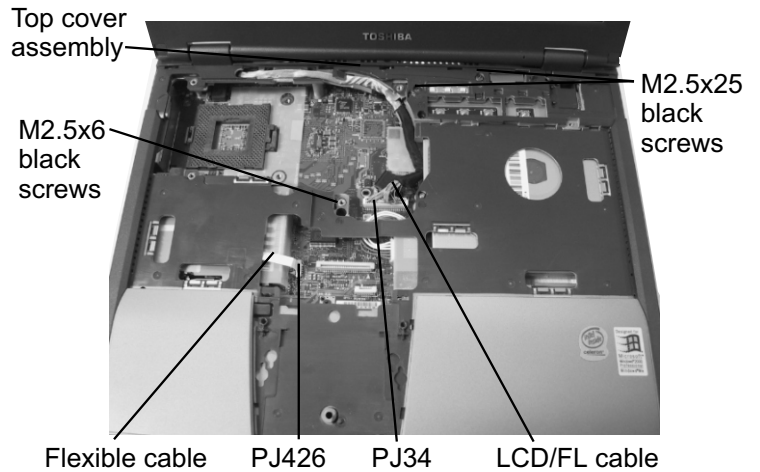
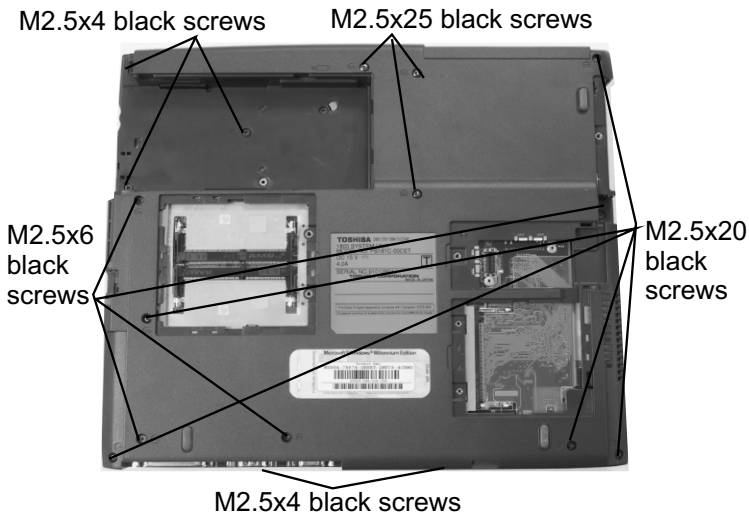


3. Remove **two M2x2 silver screws** and **two brass washers** securing the **CD/DVD-ROM drive bracket**.

FIELD REPLACEABLE UNIT DOCUMENTATION

SatelliteTM 1800 Series

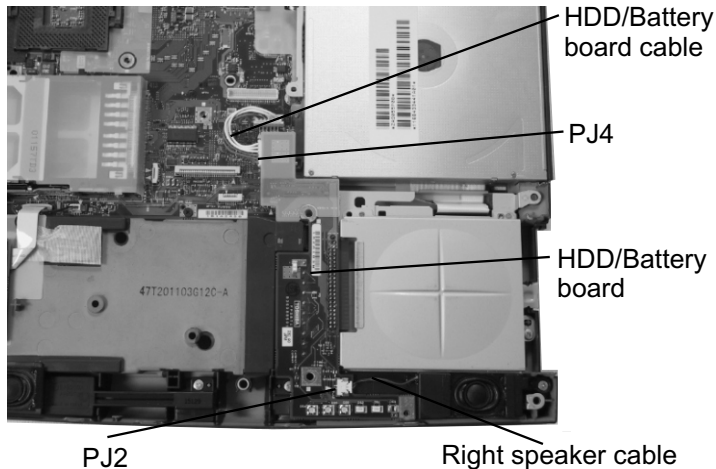
TOP COVER REMOVAL



1. Turn the computer upside down and remove the following seventeen screws:
 - 5 **M2.5x4 black flat head screws**
 - 4 **M2.5x6 black flat head screws**
 - 5 **M2.5x20 black screws**
 - 3 **M2.5x25 black screws**

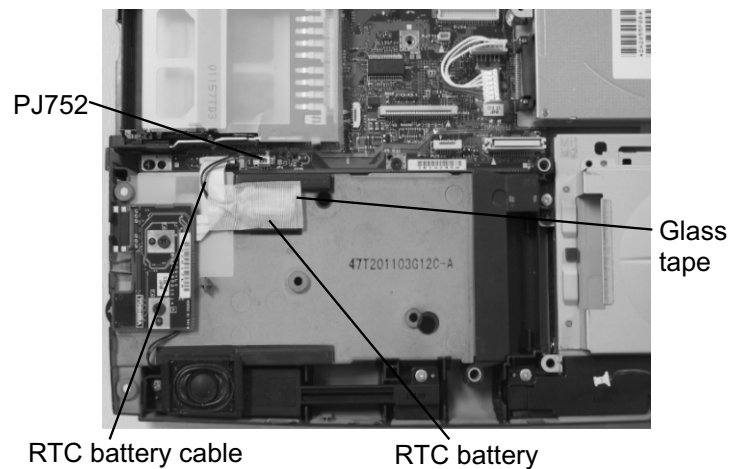
2. Turn the computer right side up and open the LCD panel.
3. Remove **one M2.5x6 black screws** and **two 2.5x25 black screws** securing the top cover assembly.
4. Disconnect the **LCD/FL cable** from **PJ34** and the **CD-ROM controller flexible cable** from **PJ426**.
5. Remove the **top cover assembly** by lifting up the back side of the cover.

HDD/BATTERY BOARD REMOVAL



1. Disconnect the **HDD/Battery board cable** from **PJ4** on the HDD/Battery board.
2. Disconnect the **right speaker cable** from **PJ2** on the HDD/Battery board.
3. Disconnect the **HDD/Battery board** from **PJ320** on the system board.

RTC REMOVAL

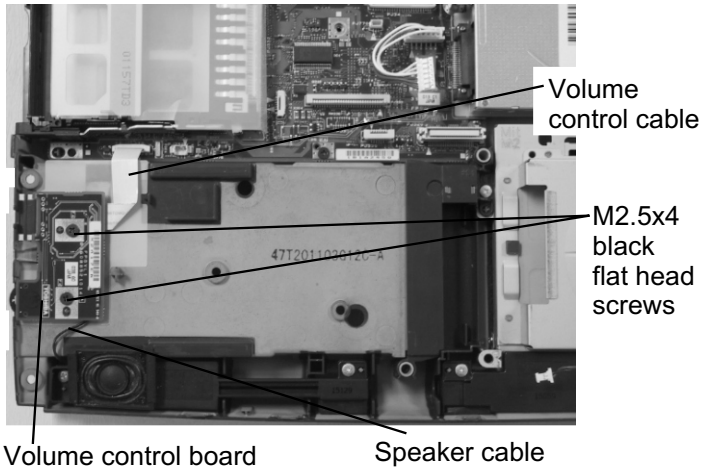


1. Remove the **glass tape** securing the RTC battery.
2. Disconnect the **RTC battery cable** from **PJ752** on the system board.
3. Lift out the **RTC battery**.

FIELD REPLACEABLE UNIT DOCUMENTATION

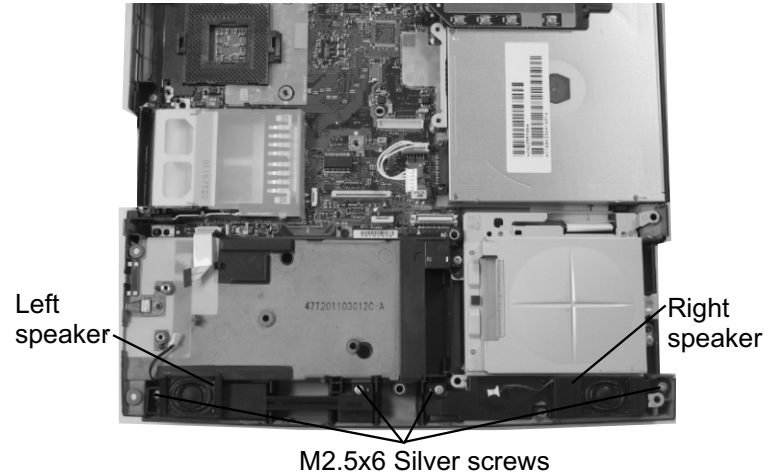
Satellite™ 1800 Series

VOLUME CONTROL BOARD REMOVAL



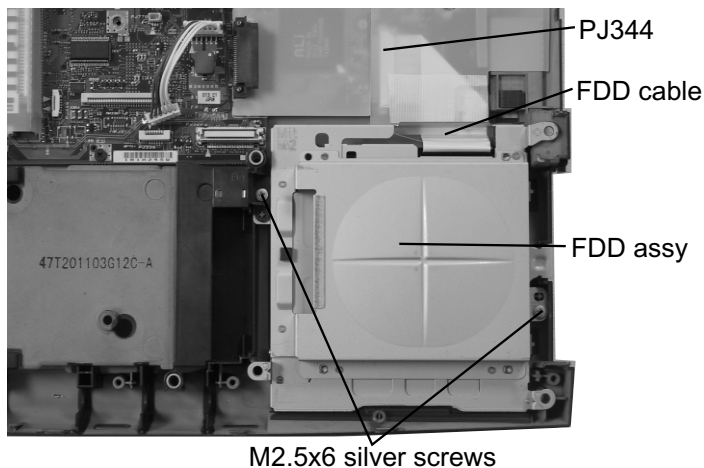
1. Remove **two M2.5x4 black flat head screws** securing the volume control board.
2. Disconnect the **volume control cable** from PJ61 and the **left speaker cable** from PJ60 on the volume control board.

SPEAKERS REMOVAL

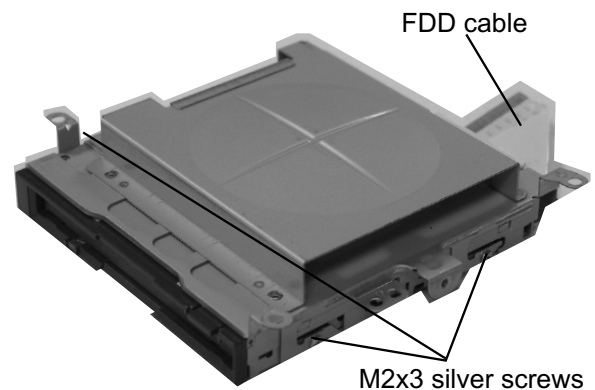


1. Remove **four M2.5x6 silver screws** securing both the left and right speakers.
2. Lift out both **speakers**.

FDD REMOVAL



1. Disconnect the **FDD cable** from **PJ344** on the system board.
2. Remove **two M2.5x6 silver screws** securing the FDD assembly.
3. Lift out the **FDD assembly**.

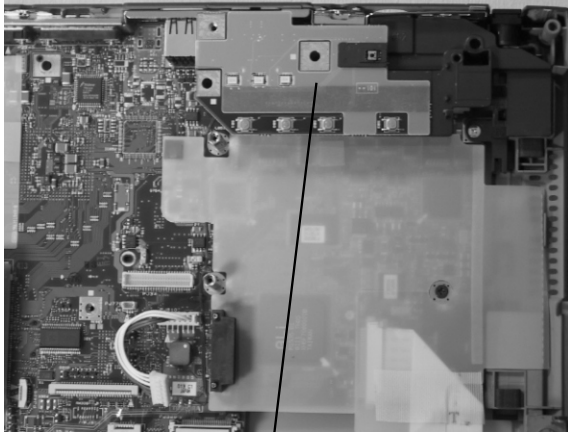


4. Remove **three M2.5x3 black screws** securing the **FDD** to the **FDD case** and separate the FDD from the case.
5. Disconnect the **FDD cable** from the FDD.

FIELD REPLACEABLE UNIT DOCUMENTATION

SatelliteTM 1800 Series

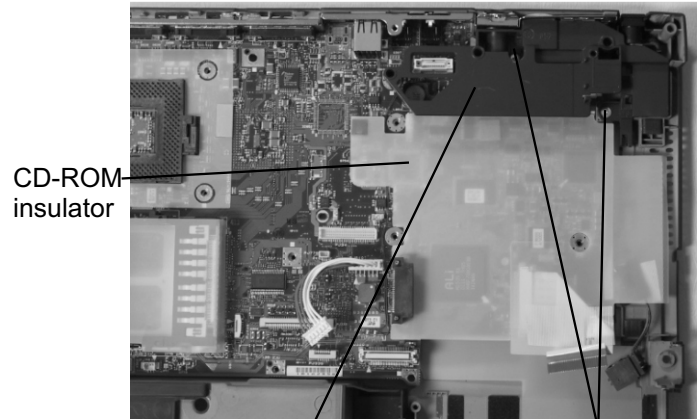
LED BOARD REMOVAL



LED board

1. Lift up the **LED board** to disconnect it from PJ310 on the system board.

SYSTEM BOARD REMOVAL



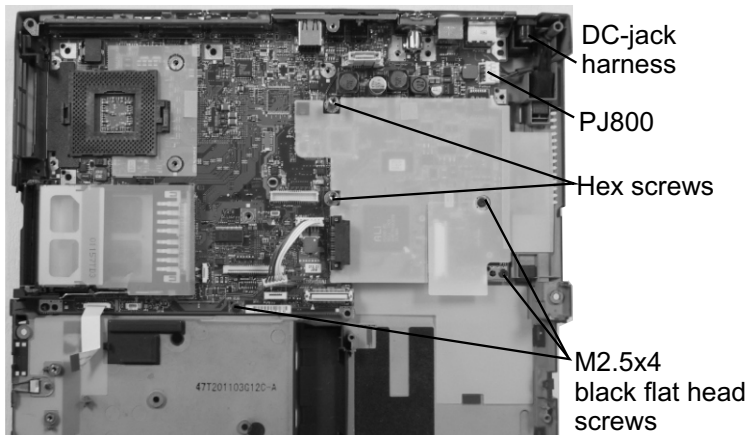
CD-ROM insulator

Conn holder

M2.5x6 silver screws

1. Remove **two M2.5x6 silver screws** securing the conn holder.
2. Lift out the **conn holder**.

SYSTEM BOARD REMOVAL

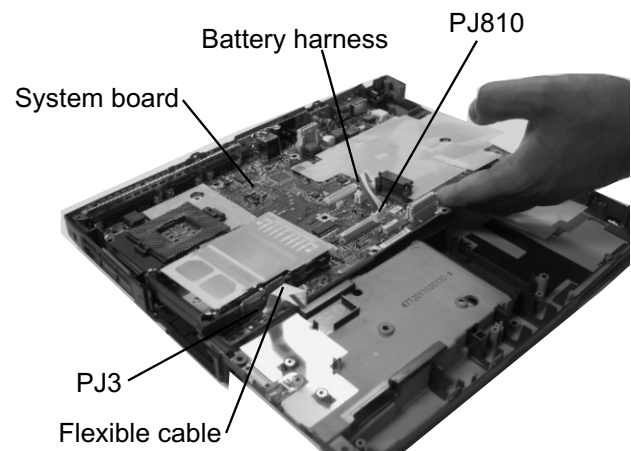


DC-jack harness

PJ800

Hex screws

M2.5x4 black flat head screws



Battery harness

PJ810

System board

PJ3

Flexible cable

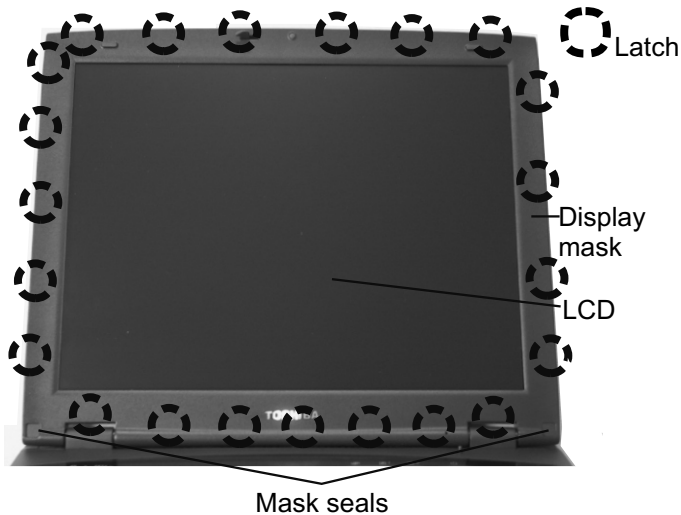
3. Disconnect the **DC-jack harness** from **PJ800** on the system board.
4. Remove **two hex screws** and **three M2.5x4 black flat head screws** securing the system board.

5. Remove the **system board** by lifting up from the front side as shown above.
6. Disconnect the **flexible cable** and **battery harness** from **PJ3** and **PJ810** on the system board.

FIELD REPLACEABLE UNIT DOCUMENTATION

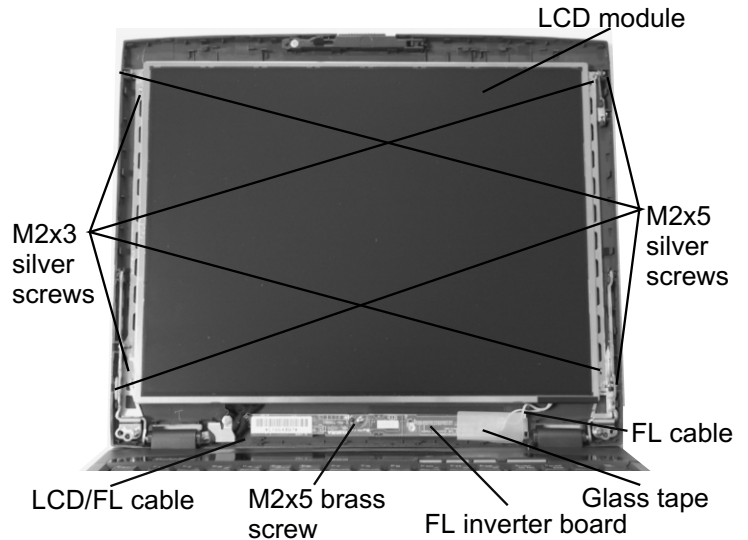
Satellite™ 1800 Series

13.3" DISPLAY MASK REMOVAL



1. Remove **two mask seals** at the bottom corners of the display assembly to expose two screws securing the display mask.
2. Remove **two M2.5x6 black screws** securing the display mask.
3. There are **23 latches** securing the **display mask**. Carefully insert your fingers between the **display mask** and the **LCD module** and pry open the latches starting from the **seven bottom latches**, to the **five latches on the right and left sides**, ending with the **six top latches**.

FL INVERTER AND 13.3" LCD REMOVAL



1. Peel off the **glass tape** securing the FL cable.
2. Remove **one M2x5 brass screw** securing FL inverter board.
3. Carefully lift up the **FL inverter board** and disconnect the **LCD/FL cable** from **CN1** and the **FL cable** from **CN2**.
4. Remove four mask seals to expose four screws securing the left and right LCD brackets.
5. Remove **four M2x5 silver screws** securing both brackets.
6. Carefully rotate out the top of the **LCD module** enough to access the display cable.
7. Peel off the tape securing the **LCD/FL cable** and disconnect the cable.
8. Remove **four M2x3 silver screws** securing the left and right LCD brackets.

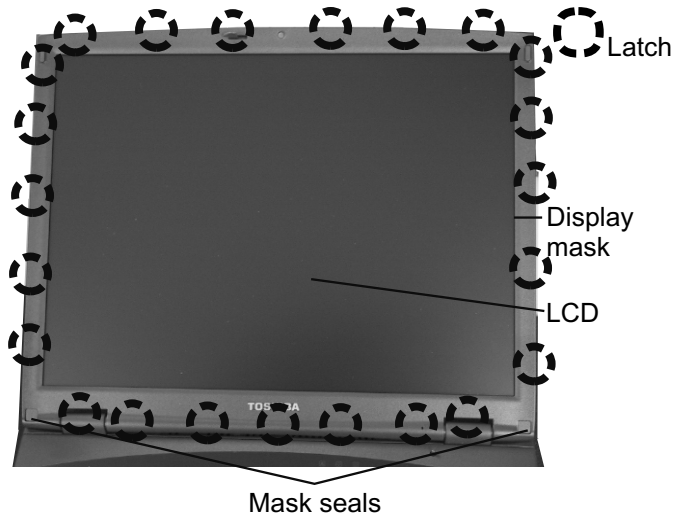
TOSHIBA

Tough Enough for Today's World

FIELD REPLACEABLE UNIT DOCUMENTATION

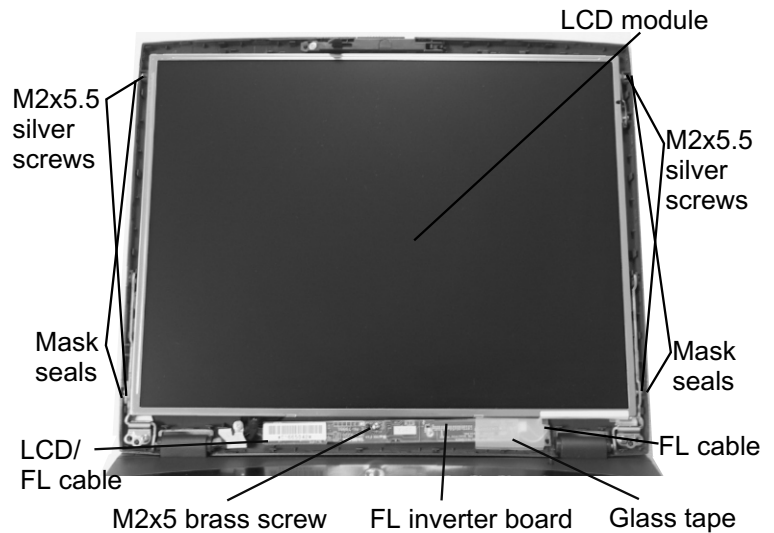
Satellite™ 1800 Series

14" DISPLAY MASK REMOVAL



1. Remove **two mask seals** at the bottom corners of the display assembly to expose two screws securing the display mask.
2. Remove **two M2.5x6 black screws** securing the display mask.
3. There are **23 latches** securing the **display mask**. Carefully insert your fingers between the **display mask** and the **LCD module** and pry open the latches starting from the **bottom seven latches**, to the **five latches on the right and left sides**, ending with the **six top latches**.

FL INVERTER AND 14" LCD REMOVAL



1. Peel off the **glass tape** securing the FL cable.
2. Remove **one M2x5 brass screw** securing FL inverter board.
3. Carefully lift up the **FL inverter board** and disconnect the **LCD/FL cable** from **CN1** and the **FL cable** from **CN2**.
4. Remove **four mask seals** to expose four screws securing the LCD module.
5. Remove **four M2x5.5 silver screws** securing the LCD module.
6. Carefully rotate out the top of the **LCD module** enough to access the display cable.
7. Peel off the tape securing the **LCD/FL cable** from the LCD module and disconnect the cable.

Free Manuals Download Website

<http://myh66.com>

<http://usermanuals.us>

<http://www.somanuals.com>

<http://www.4manuals.cc>

<http://www.manual-lib.com>

<http://www.404manual.com>

<http://www.luxmanual.com>

<http://aubethermostatmanual.com>

Golf course search by state

<http://golfingnear.com>

Email search by domain

<http://emailbydomain.com>

Auto manuals search

<http://auto.somanuals.com>

TV manuals search

<http://tv.somanuals.com>