

# FIELD REPLACEABLE UNIT DOCUMENTATION

**Satellite™**

**3000 Series**

---

## GENERAL INFORMATION

---

### Tools Required for Proper Disassembly and Reassembly:

1. Phillips screwdriver (Size 0)
2. Phillips Screwdriver (Size 1)
3. Flat head screwdriver (5mm)
4. Hex driver (5mm)
5. Security Torx(Size8)
6. Case Separator
7. ESD Wrist Strap
8. ESD mats
9. Tweezers

Before attempting any of the following procedures, make sure that the main battery and AC adaptor is not connected to the unit and the environment in which you are working on is protected from Electro-Static Discharge(ESD).

---

# TOSHIBA

**Tough Enough for Today's World**

# FIELD REPLACEABLE UNIT DOCUMENTATION

## **Satellite<sup>TM</sup>** **3000 Series**

---

### **TABLE OF CONTENTS:**

- 1. BATTERY PACK REMOVAL**
- 2. OPTIONAL PC CARD REMOVAL**
- 3. MODULAR BAY REMOVAL**
- 4. DVD-ROM/CDR-W DRIVE REMOVAL**
- 5. HDD REMOVAL**
- 6. MEMORY MODULE REMOVAL**
- 7. KEYBOARD REMOVAL**
- 8. CONTROL BOARD REMOVAL**
- 9. COOLING MODULE REMOVAL**
- 10. CPU REMOVAL**
- 11. TOP COVER REMOVAL**
- 12. VIDEO BOARD REMOVAL**
- 13. MODEM BOARD REMOVAL**
- 14. WIRELESS LAN CARD REMOVAL**
- 15. SYSTEM BOARD REMOVAL**
- 16. DISPLAY MASK REMOVAL**
- 17. FL INVERTER AND LCD REMOVAL**

---

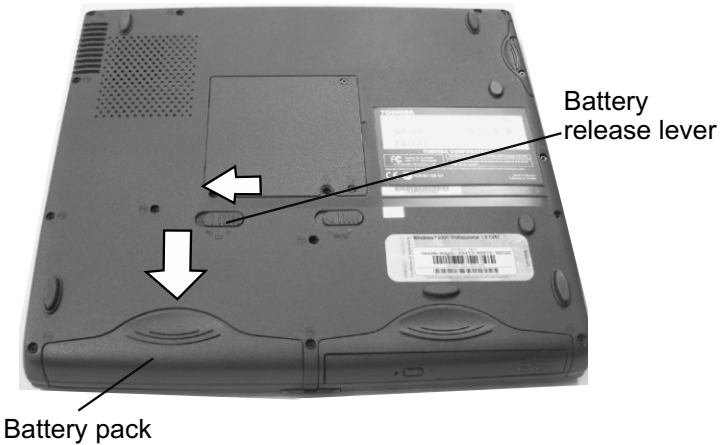
# **TOSHIBA**

**Tough Enough for Today's World**

# FIELD REPLACEABLE UNIT DOCUMENTATION

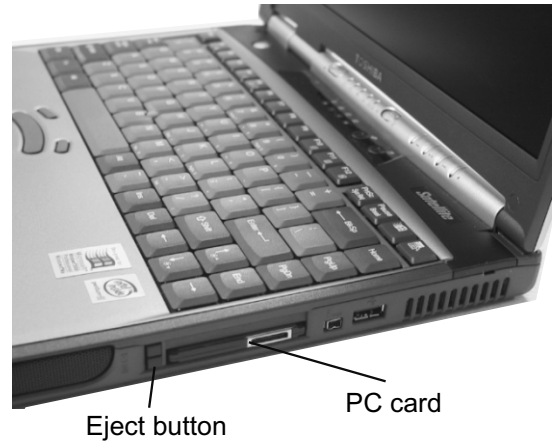
## Satellite™ 3000 Series

### BATTERY PACK REMOVAL



1. Turn the computer upside down as shown.
2. Slide the **battery release lever** in the direction of the arrow.
3. Slide the **battery pack** forward and lift it out.

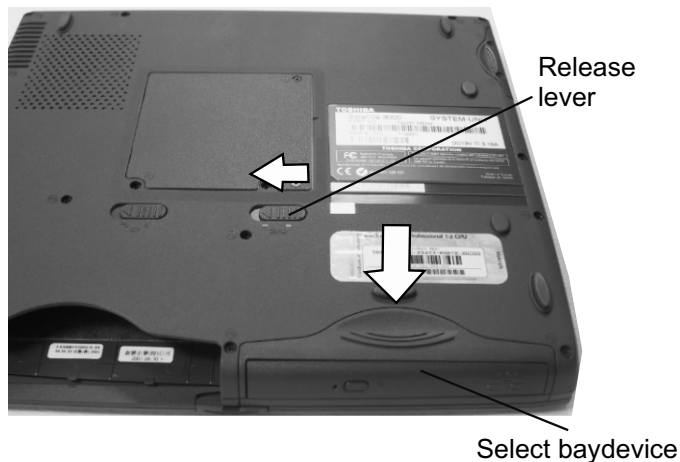
### OPTIONAL PC CARD REMOVAL



1. Push the **eject button** to pop it out.
2. Press the **eject button** and remove the **PC card**.

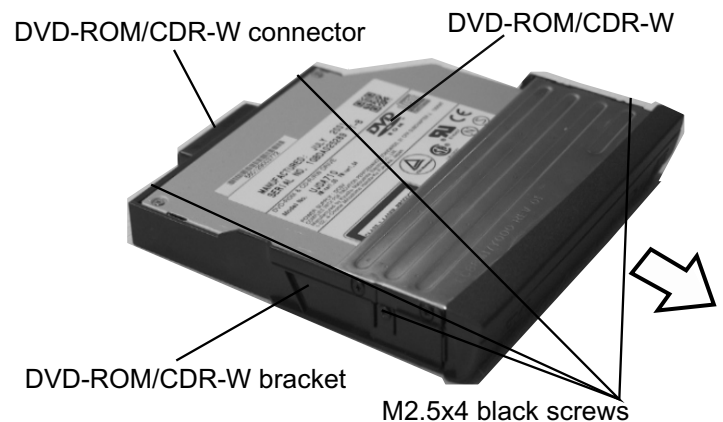
**NOTE:** Before removing any PCMCIA device, make sure it is "STOPPED" in the PC Card Manager.

### MODULAR BAY REMOVAL



1. Turn the computer upside down.
2. Slide the **release lever** in the direction of the arrow.
3. Pull out the **modular bay device** in the direction of the arrow.

### DVD-ROM/CDR-W DRIVE REMOVAL

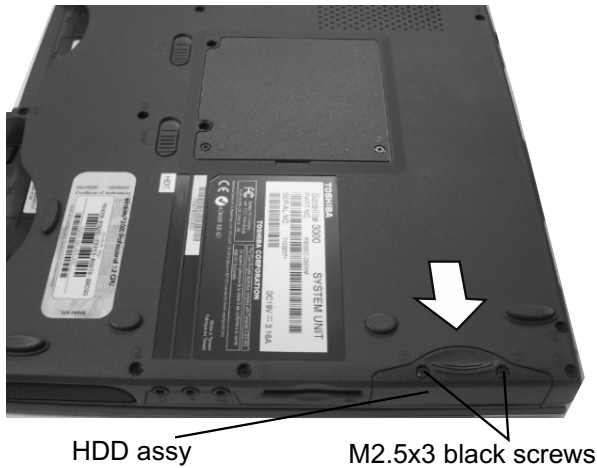


1. Remove **four M2.5x4 black screws** securing the DVD-ROM/CDR-W to the bracket.
2. Slide the **DVD-ROM/CDR-W** out of the bracket.
3. Disconnect the **DVD-ROM/CDR-W** connector from the drive.

# FIELD REPLACEABLE UNIT DOCUMENTATION

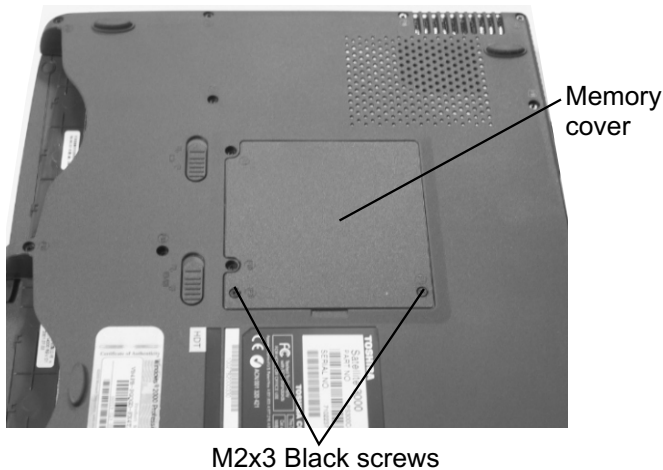
## Satellite<sup>TM</sup> 3000 Series

### HDD REMOVAL



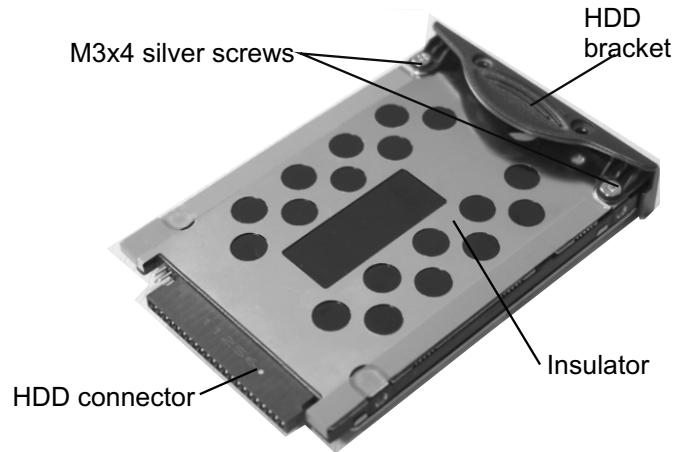
1. Turn the computer upside down.
2. Remove **two M2.5x3 black screws** securing **HDD assembly**.
3. Slide the **HDD assembly** in the direction of the arrow to disconnect from the system board.
4. Lift the HDD assembly out of the HDD bay.

### MEMORY MODULE REMOVAL

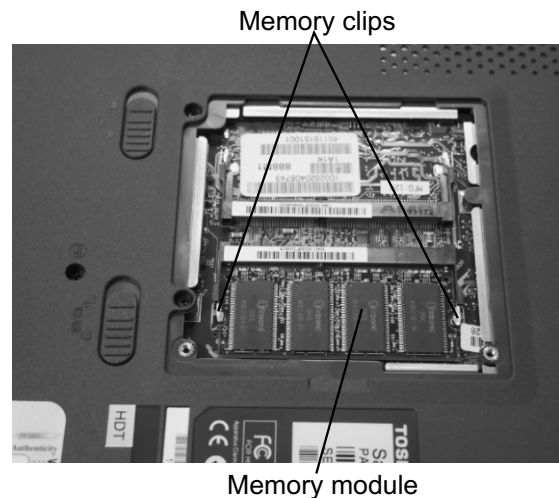


1. Turn the computer upside down.
2. Remove **two M2x3 black screws** and remove the **memory cover**.

### HDD REMOVAL



5. Remove **two M3x4 silver screws** securing the **HDD bracket** to the drive and lift off the bracket.
6. Peel off the HDD insulator.



3. Spread the **memory clips** securing the memory module and pull the **memory module** out of the connector on a 45 degree angle.

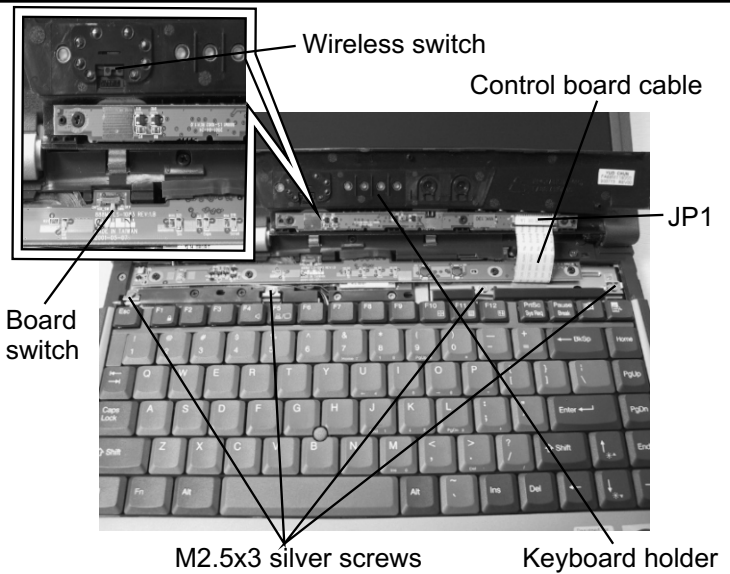
# FIELD REPLACEABLE UNIT DOCUMENTATION

## Satellite<sup>TM</sup> 3000 Series

### KEYBOARD REMOVAL

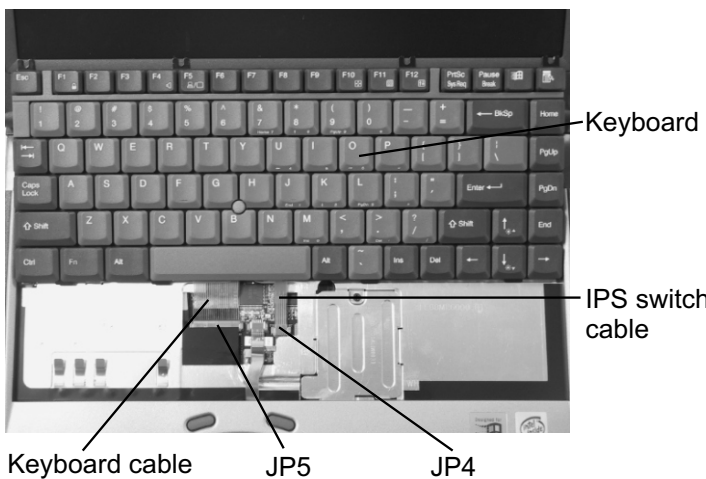


1. Open the **display panel**.
2. Using the **case separator**, unlatch the **keyboard holder** at the top of the keyboard.



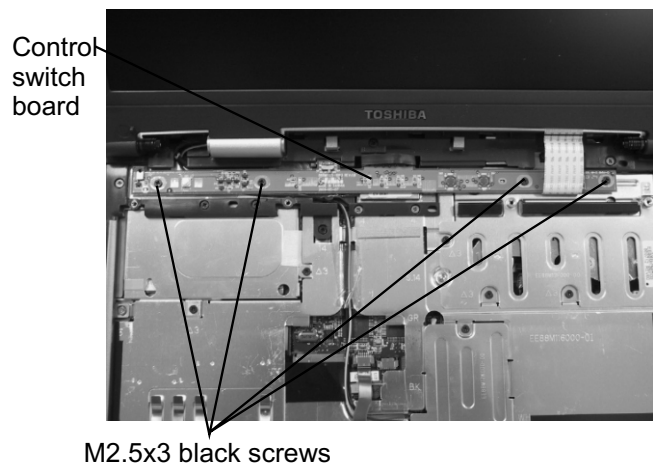
3. Disconnect the **control switch/LED board cable** from the keyboard holder.
  4. Remove **four M2.5x3 silver screws** securing the keyboard clip.
- Note: When reinstalling the keyboard holder, make sure that the wireless switch is latch properly to the control switch board switch.

### KEYBOARD REMOVAL



4. Lift out the **keyboard** and set it as shown above.
5. Disconnect the **keyboard cable** from **JP5** and **IPS switch cable** from **JP4** on the video board and lift out the keyboard.

### CONTROL BOARD REMOVAL

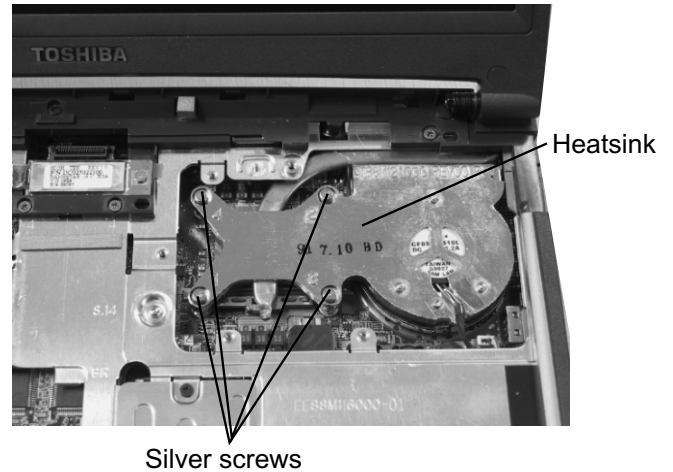
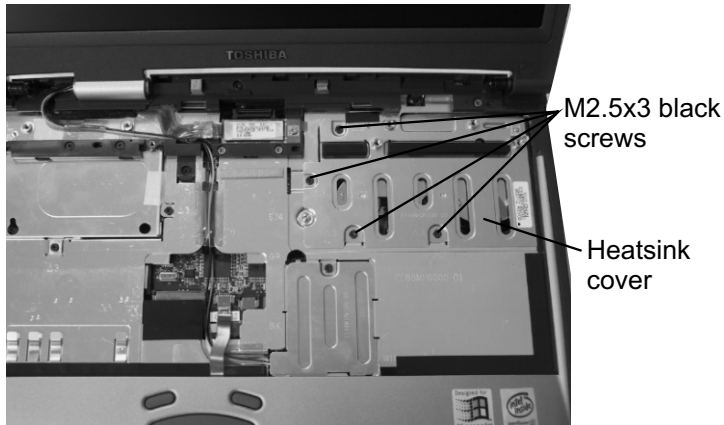


1. Remove **four M2.5x3 black screws** securing the control switch board.
2. Disconnect the **control switch/LED board** from **JP4** on the main PCB.

# FIELD REPLACEABLE UNIT DOCUMENTATION

## Satellite™ 3000 Series

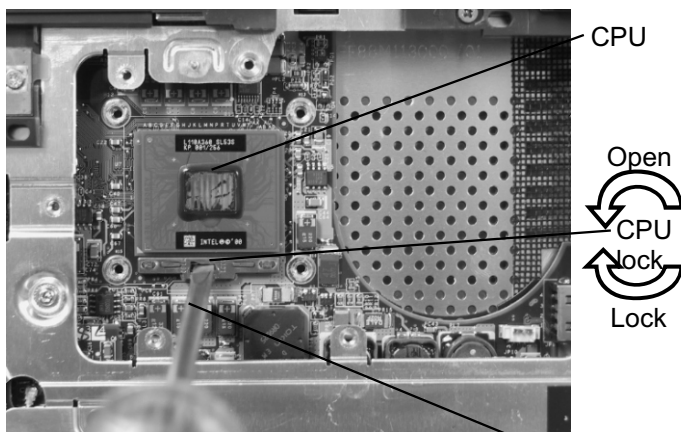
### COOLING MODULE REMOVAL



1. Remove **four M2.5x3 brass screws** securing the heatsink cover.

2. Remove **four silver screws** securing the heatsink.
3. Lift out the **heatsink**.

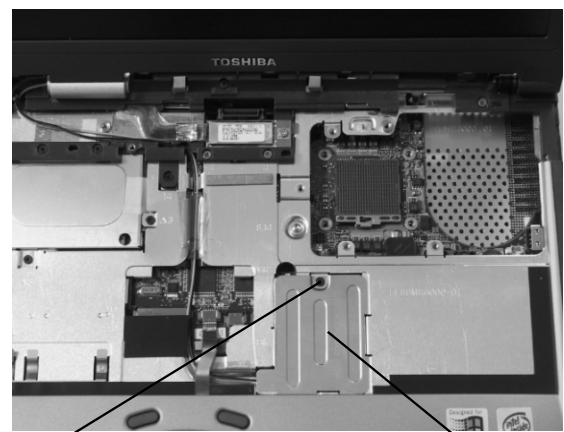
### CPU REMOVAL



1. Using a 5mm flat head screw driver, insert the screwdriver into the CPU lock slot and turn it counterclockwise.
2. Lift out the **CPU**.

**NOTE:** In order to properly lock the CPU, a 5mm flat head screw driver must be used.

### TOP COVER REMOVAL

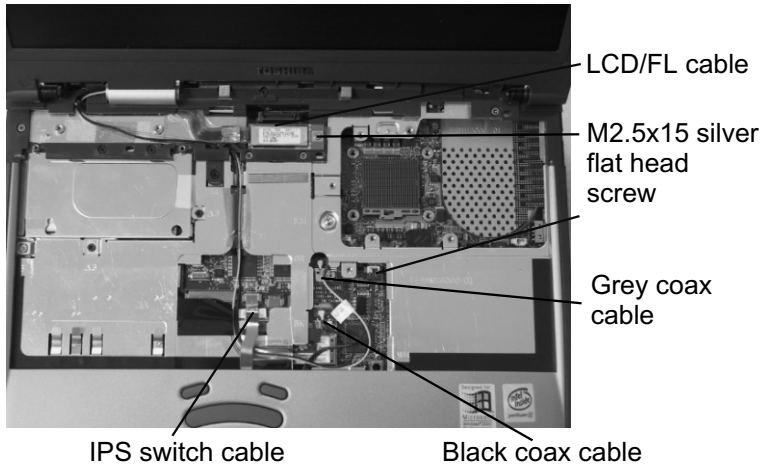


1. Remove **one M2.5x3 flat head screw** securing the cable cover.

# FIELD REPLACEABLE UNIT DOCUMENTATION

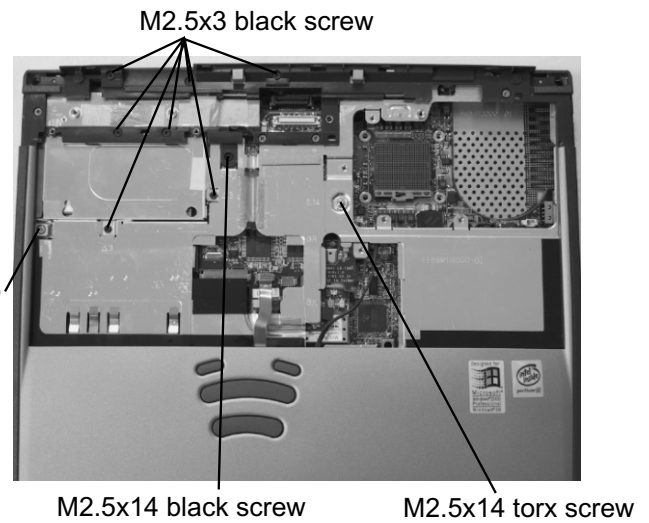
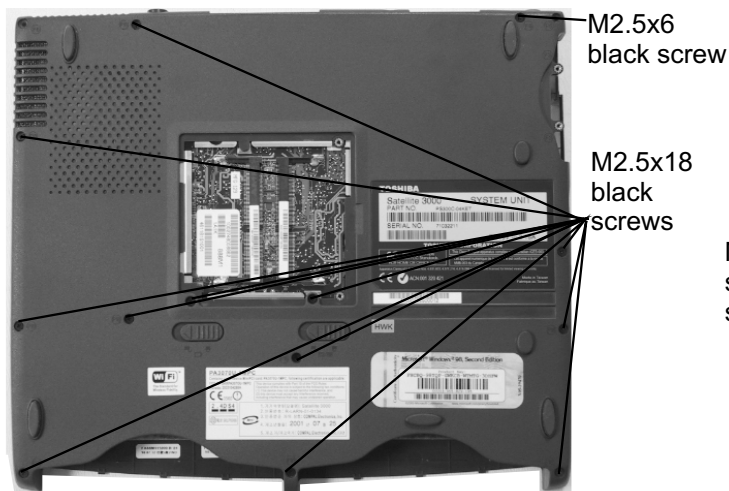
## Satellite™ 3000 Series

### TOP COVER REMOVAL



2. Turn the computer right side up and open the display panel.
3. Disconnect the following four cables:
  - **Black and Gray coax cables**
  - **IPS switch cable from PJ1**
4. Remove **one M2.5x15 silver flat head screws** securing the LCD/FL cable and disconnect the **LCD/FL cable**.

5. Remove **six M2.5x6 black screws** (four at the back and two at the bottom cover) securing the display assembly.
6. Lift out the display assembly.



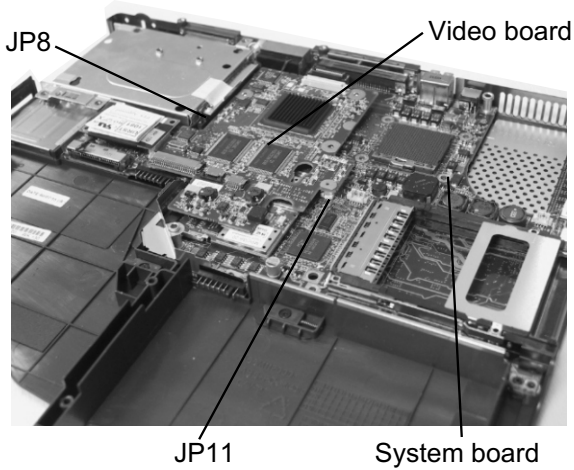
- 7 Remove the following thirteen screws from the bottom cover:
  - M2.5x6 black screw
  - M2.5x18 black screws

8. Remove the following 9 screws from the top cover:
  - **Six M2.5x3 black screws**
  - **One M2.5x14 black screw**
  - **One M2.5x14 Torx screw(Size 8)**
  - **One M2.5x5 silver screws**
9. Unlatch the top cover from the bottom cover.

# FIELD REPLACEABLE UNIT DOCUMENTATION

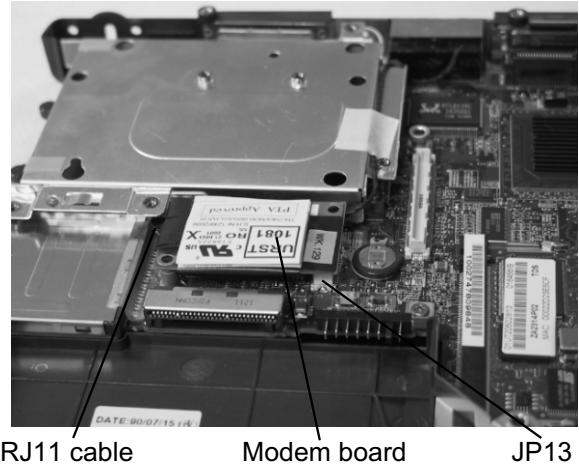
## Satellite™ 3000 Series

### VIDEO BOARD REMOVAL



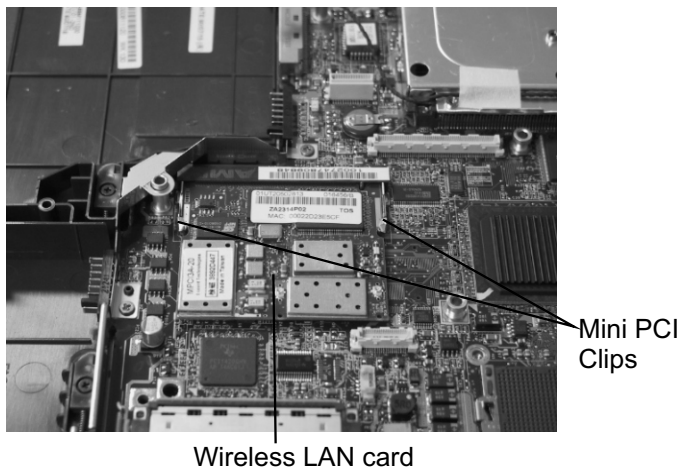
1. Disconnect the video board from JP8 and JP11 on the system board.

### MODEM BOARD REMOVAL



1. Disconnect the **modem board** from **JP13** on the system board.
2. Disconnect the **RJ11 cable** from the modem board.

### WIRELESS LAN CARD REMOVAL



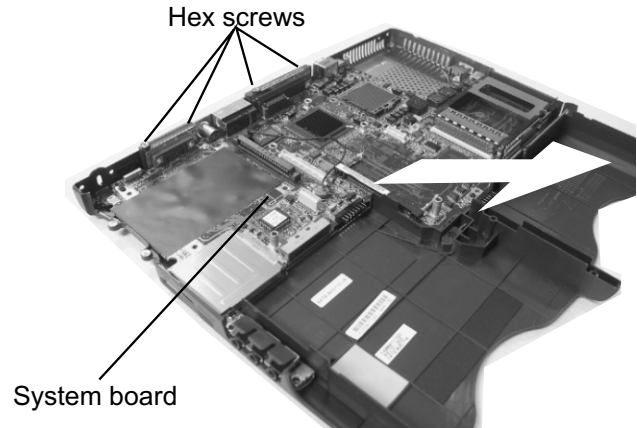
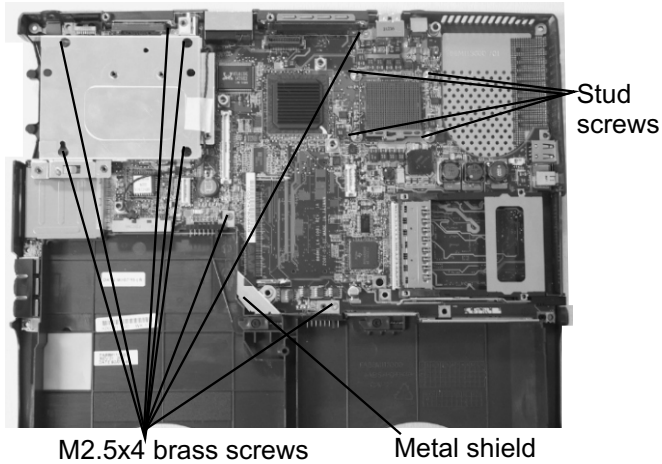
1. Push the **Mini PCI slot clips** outward and pull the **Wireless LAN card** out of the connector on a 30 degree angle.



# FIELD REPLACEABLE UNIT DOCUMENTATION

## Satellite<sup>TM</sup> 3000 Series

### SYSTEM BOARD REMOVAL



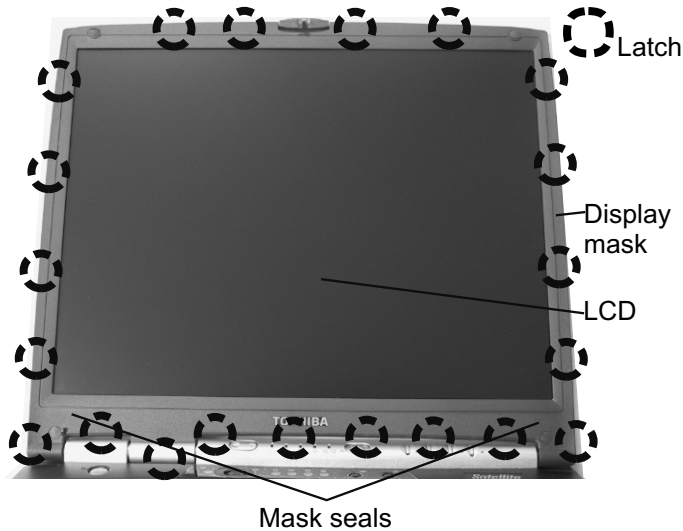
1. Remove the following **eleven screws** securing the system board:
  - 2 **M2.5x4 brass screws** securing the metal shield
  - 5 **M2.5x4 brass screws** securing the HDD shield
  - 1 **M2.5x4 brass screw** on the system board
  - 4 **stud screws** from the CPU socket

2. Remove **four hex screws** at the back of the computer securing the system board.
3. Lift out the **system board**.

# FIELD REPLACEABLE UNIT DOCUMENTATION

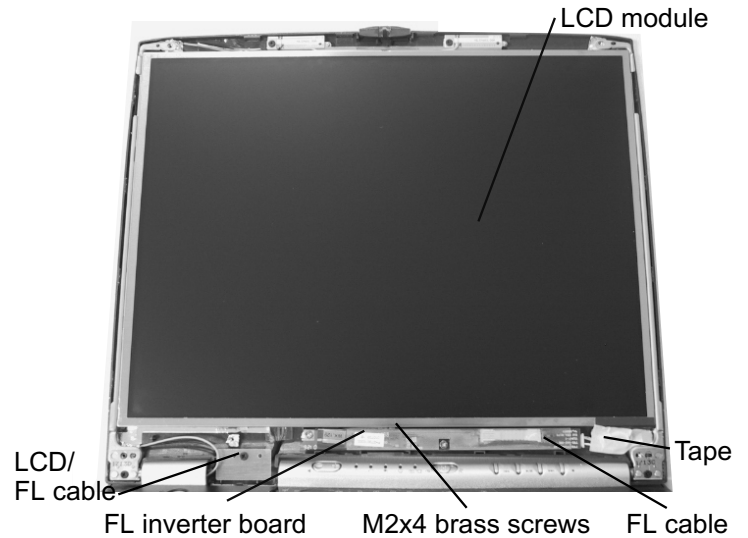
## Satellite™ 3000 Series

### 14" DISPLAY MASK REMOVAL

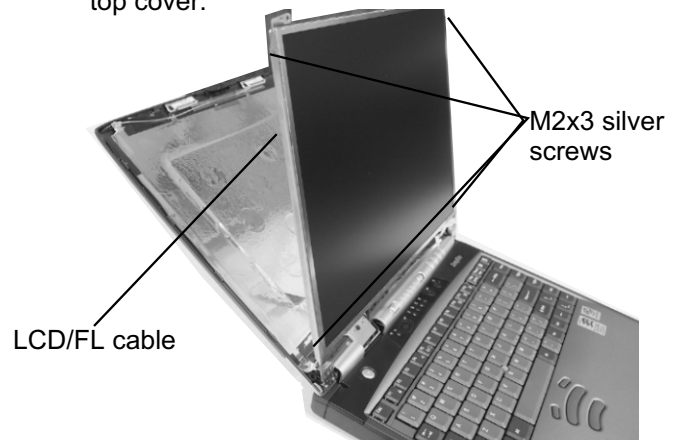


1. Remove **two rubber seals** at the top corners of the display assembly and **two mask seals** at the bottom corners of the display assembly.
2. Remove **four M2.5x5 silver screws** securing the display mask.
3. There are **21 latches** securing the **display mask**. Carefully insert your fingers between the **display mask** and the **LCD module** and pry open the latches starting from the **bottom six latches**, to the **five latches on the right and left sides**, ending with the **top six latches**.

### FL INVERTER AND 14" LCD REMOVAL



1. Peel off the **tape** securing the FL cable.
2. Remove **two M2.5x5 silver screw** securing FL inverter board.
3. Carefully lift up the **FL inverter board** and disconnect the **LCD/FL cable** from **CN1** and the **FL cable** from **CN2**.
4. Remove **two 2.5x6 black screws** securing the LCD top cover.



5. Lay the top cover as shown above.
6. Peel off two capton tapes securing the LCD/FL cable and disconnect the cable.
7. Remove **four M2x3 silver screws** securing the LCD module to the LCD brackets and lift out the module.

**NOTE: When you open and close the display assembly with the top cover off, hold it by the hinges to prevent the brackets from bending.**

## Free Manuals Download Website

<http://myh66.com>

<http://usermanuals.us>

<http://www.somanuals.com>

<http://www.4manuals.cc>

<http://www.manual-lib.com>

<http://www.404manual.com>

<http://www.luxmanual.com>

<http://aubethermostatmanual.com>

Golf course search by state

<http://golfingnear.com>

Email search by domain

<http://emailbydomain.com>

Auto manuals search

<http://auto.somanuals.com>

TV manuals search

<http://tv.somanuals.com>