



DAY/NIGHT SURVEILLANCE

24-7 VIDEO
IMAGING

The IK-DF02A is the perfect choice where a high-resolution color mini-dome camera is required that is fast and simple to install

- High-tech, attractive styling for retail, corporate and other indoor applications
- 3 axis adjustable – 350° pan, 146° tilt
- Tamper resistant lockable cover
- 1/3" SuperHAD™ CCD (768 x 494)
- 10-Bit Digital Signal Processing technology
- 520 TV lines horizontal resolution
- 50 dB S/N ratio for digital recording
- Backlight compensation
- Minimum illumination 0.5 lux with tinted dome
- Shipped fully assembled and ready to install
- 3 year limited warranty

IK-DF02A

DAY/NIGHT DOME CAMERA

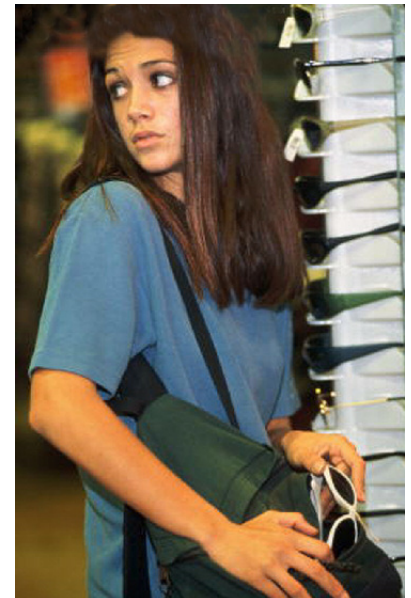
Imaging sensor	1/3" SuperHAD™ CCD
Picture elements	768 (H) x 494 (V)
Resolution	520 TVL horizontal, 350 TVL vertical
Day/Night function	Yes
Digital Signal Processing	Yes
Digital noise reduction	Yes
Minimum subject illumination	0.5 lux with tint dome
White balance	Auto
White balance range	2500° K to 10000° K
Lens	Verifocal 2.8mm-10mm, F=1.3
Angle control	3 axis adjustable
Pan/Tilt range	pan: 350°, tilt: 146°
Angle of view (H)	27° (tele) - 100° (wide)
Angle of view (V)	20° (tele) - 73° (wide)
Backlight compensation	Yes (zone, center)
Signal-to-Noise ratio	50 dB
Video output	BNC
Video format	NTSC
Synchronization system	Internal or AC line lock
Automatic Gain Control (AGC)	32 dB
Digital Signal Processing	10-Bit
Operating temperature	14°F to 122°F (-10°C to 50°C)
Camera mounting method	Direct or junction box
Power supply	AC 24 V, DC 12 V
Dimensions (inches)	5.1 (W) x 3.94 (H) x 5.1 (D)
Dome cover radius (inches)	3.75
Tamper resistance	Cover can be locked on (selectable)
Weight	12.7 oz
Safety standard	UL 2044
Emission standard	FCC, Class A
RoHS	Compliant
Accessories	Manual & warranty, mounting screw set and guide pattern sheet
Warranty	3 year limited

The IK-DF02A economically meets the needs of retail and other commercial applications.

This indoor color mini-dome delivers highly versatile, cost-effective, and fully integrated surveillance in a simple-to-install package. It is attractive and unobtrusive yet provides a crime-detering presence round-the-clock with its day-night imaging protection.

MAIN FEATURES

- High-tech, attractive styling
- 350° pan, 146° tilt
- Tamper resistant cover
- 1/3" SuperHAD™ CCD (768 x 494)
- Minimum illumination 0.5 lux
- D10-Bit Digital Signal Processing
- Day-night imaging
- 520 TVL horizontal resolution
- 50 dB S/N ratio for digital recording
- Backlight compensation
- Compact, simple-to-install design
- Mounting holes line up with standard electrical junction boxes
- 3 year limited warranty



Take advantage of the IK-DF02A's compact one-piece design — a fully integrated indoor enclosure with camera and lens for fast, easy installations in quality-sensitive CCTV applications. Shipped completely assembled, it has high resolution plus style making this the mini-dome camera of choice.

APPLICATIONS

- Retail outlets
- Indoor malls
- Casinos
- Food franchises
- Office buildings
- Grocery stores
- Apartments/condominiums



Toshiba America Information Systems, Inc.
 Surveillance & IP Video Products, Imaging Systems Division
 9740 Irvine Boulevard, Irvine, California 92618
 1-877-855-1349 • www.toshibasecurity.com

TOSHIBA
 Leading Innovation >>>

Free Manuals Download Website

<http://myh66.com>

<http://usermanuals.us>

<http://www.somanuals.com>

<http://www.4manuals.cc>

<http://www.manual-lib.com>

<http://www.404manual.com>

<http://www.luxmanual.com>

<http://aubethermostatmanual.com>

Golf course search by state

<http://golfingnear.com>

Email search by domain

<http://emailbydomain.com>

Auto manuals search

<http://auto.somanuals.com>

TV manuals search

<http://tv.somanuals.com>