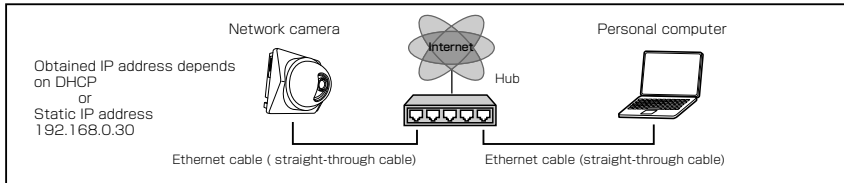


BEFORE INSTALLING OR CONNECTING IK-WB15A TO YOUR PC, READ THIS QUICK START GUIDE

TOSHIBA Network Camera IK-WB15A Quick Start Guide

Connect the network camera to your personal computer.

- Connection example (Connecting to a personal computer by a LAN cable through a hub or a router)



NOTE

- When connecting via a local area network, the camera should be on the same network segment.

Obtaining IP address

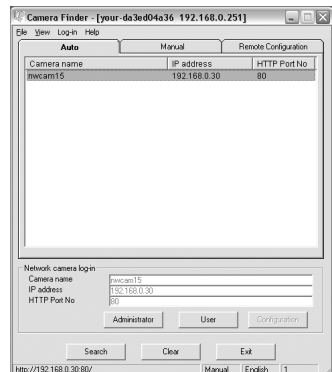
- Obtaining from DHCP server

The camera is set to automatically obtain an IP address by default. Connect the camera to a DHCP network. No other setting is required.

* If the DHCP server is not used, your network camera will be automatically assigned to the fixed IP address "192.168.0.30."

"Camera Finder"

- Searching the camera by "Camera Finder"
 - Install Camera Finder from the CD-ROM supplied as an accessory.
 - Select "Start" - "Program" - "TOSHIBA Network Camera" - "Camera Finder."
 - Click the "Search" button.
 - Click the desired camera in the search list to log in the searched camera.
 - Click the "Administrator" button.
- Your browser will be open and the "Camera Window" screen will appear.
- When opening the "Camera Window" for the first time, ActiveX control will be downloaded automatically from the product. A confirmation dialog box may or may not appear on the screen. Click "Yes" if it appears.



TOSHIBA Network Camera IK-WB15A Quick Start Guide (Cont.)

Logging in

Administrator logging in

- Enter "root" in the User Name text box and "ikwb" in the password text box.
- Click "OK."

User logging in

- Enter "guest" in the User Name text box and "guest" in the password text box.
- Click "OK".

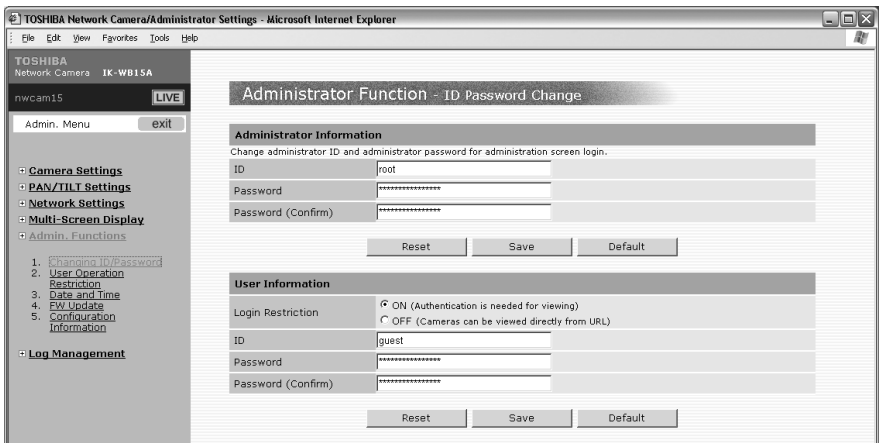


Changing the login name and password

Administrator login allows changing important informations such as camera settings. Be sure to change the user name and password to ensure camera security.

Administrator information setting

- Select "Administrator function" / "ID password change" on the Admin. Menu.
- Enter the desired ID and password in the Administrator ID text box and Administrator Password text box respectively.
- Click "Save."



User information setting

- Set "ON" or "OFF" for "Login Restriction."
- Enter the desired ID and password in the User ID text box and User Password text box respectively.
- Click "Save."

Setup Screen

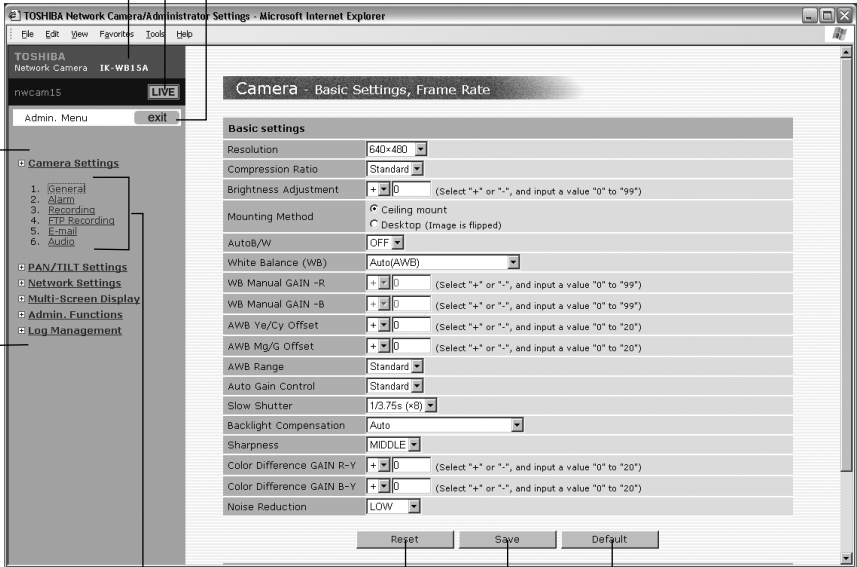
Camera name

LIVE button

Displays the camera image screen.

exit button

Closes the Setting screen.



Main Menu

Sub Menu

"Reset" button

Resets to condition before change

"Save" button

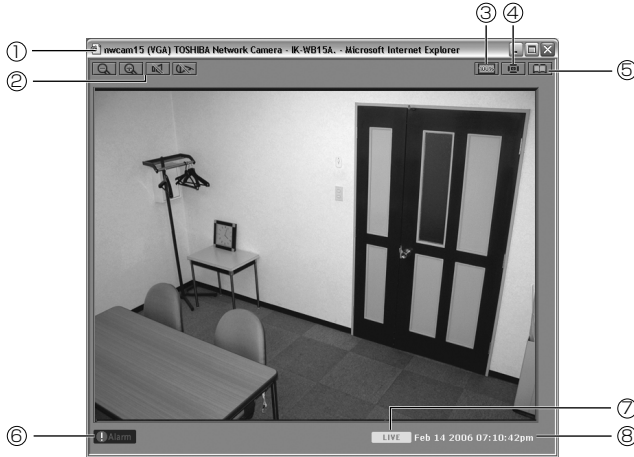
Saves changes

















"Default" button


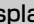




Resets settings back to factory default.

TOSHIBA Network Camera IK-WB15A Quick Start Guide (Cont.)

Setup Screen



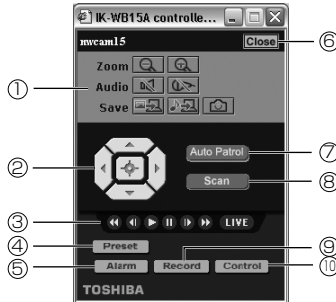
Number and Item	Description
① Camera name	The name of the camera displaying live images.
② Operation Buttons	<p> : Clicking the  button will zoom out.</p> <p> : Each clicking of the  button will zoom in on the image. Can be zoomed in 2.6x at maximum..</p> <p> : Clicking the  button will change the display to the  button and will output sound.</p> <p>Clicking the  button will change the display to the  button and will not output sound.</p> <p> : Clicking the  button will change the display to the  button and will output sound from the personal computer microphone.</p> <p>Clicking the  button will change the display to the  button and will not output sound from the personal computer microphone.</p>
③ Operation Buttons	 : Equal size button. Click  to reset to a viewer size according to the resolution.

Number and Item	Description
④ Display controller 	Clicking the  button displays the controller in a separate window.
⑤ Setup Menu Display 	Clicking the  button will display the Setup Menu screen in other window.
⑥ Alarm notification 	This is displayed when "Alarm In" (page 72) or "Motion Detection" (page 72) is activated. The  Alarm disappears if it is clicked.
⑦ Displayed images	When displaying present normal images, "LIVE" will be displayed, and when displaying images from the Alarm List or Record List, "PLAYBACK" will be displayed on the screen. You can switch these views using the controller.
⑧ Time and date	The current time and date of the network camera are shown when "LIVE" is displayed, and the recorded time and date are shown when "PLAYBACK" is displayed on the screen. When in PLAYBACK mode, S) or E) may be shown with the time and date. "S)" and "E)" are sometimes displayed in the PLAYBACK mode as date and time data. "S)" means start of playback images and "E)," end of playback images. In these modes, images or date and time cannot be updated. Operate playback on the controller.

■ Moving the screen center.

- 1 Click on any area in the Camera Image screen.
- 2 The camera moves so that the clicked point becomes the center of the image.

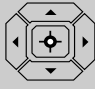
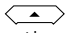

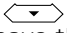









Controller



● Functions of components of Administrator basic controller

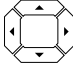
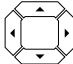
Number and Item	Description	
① Operation Buttons	Zoom	: Zoom out button. Click to zoom out.
		: Zoom in button. Click to zoom in.
	Audio	: Audio input button. Plays sound that is input to the camera.
		: Audio output button. Transfers sound that is input from the personal computer microphone to the camera.
	Save	: Image record button. Continually records images.
		: Audio record button. Continually records audio input.
		: One-shot button. Records one image.

● Functions of components of Administrator basic controller


Number and Item	Description
<p>② Controller</p> 	<p>This feature adjusts the direction of the lens by panning (left/right) and tilting (up/down).</p> <p>1. Each time you click the  button, the lens moves up. You can move the lens in a range of four different vertical positions. When the camera lens reaches its upper limit, clicking on the button has no effect.</p> <p>2. Each time you click the  button, the lens moves left. You can move the lens in a range of four different horizontal positions. When the camera lens reaches its left most limit, clicking on the button has no effect.</p> <p>3. Each time you click the  button, the lens moves down. You can move the lens in a range of four different vertical positions. When the camera lens reaches its lower limit, clicking on the button has no effect.</p> <p>4. Each time you click the  button, the lens moves right. You can move the lens in a range of four different horizontal positions. When the camera lens reaches its right most limit, clicking on the button has no effect.</p> <p>5. Clicking the  button returns the lens to its center position. If an external impact or other force moves the lens from its preset position, click this button to correct the position.</p>
<p>③ Control buttons for playing and recording</p>	<p> Fast rewinds play images. When "S)" is indicated in date and time display, recorded images have been rewound to the first image.</p> <p> Play images are played frame by frame in reverse direction.</p> <p> Plays images being selected.</p> <p> Pauses an image being played.</p> <p> Play images are played frame by frame.</p> <p> Fast rewinds play images. When "E)" is indicated in date and time display, recorded images have been fed to the last image.</p> <p> Resets the play image mode to the current image mode.</p>
<p>④ Preset</p>	<p>The Preset button. The preset control panel will appear.</p>
<p>⑤ Alarm</p>	<p>The Alarm List button. The list of "Alarm In" will appear.</p>
<p>⑥ Close</p>	<p>The Close button. Exits the controller screen.</p>

TOSHIBA Network Camera IK-WB15A Quick Start Guide (Cont.)

- Functions of components of Administrator basic controller

Number and Item	Description
⑦ Auto Patrol	The Auto Patrol feature moves the lens automatically to all the configured preset positions in order. Clicking the Auto Patrol button starts Auto Patrol. Clicking one of  buttons stops the action.
⑧ Scan	The Scan feature automatically moves (swivels) the lens horizontally back and forth once. Clicking the Scan button starts Scan. Clicking one of  buttons stops the action.
⑨ Record	"Continuous Recording" button. The list of "Continuous Recording" will appear.
⑩ Control	"EXT. Control In" button. The list of "EXT. Control In" will appear.

NOTE

- Setting the Manual mode adjusts brightness only by the lens aperture.
- A picture displayed by the  button (one-shot button) should be saved using "Save Picture As..." with a mouse right button. However, depending on installation (Ceiling/Desktop) and its settings, the picture may be vertically reversed.
- Microphone input and audio output are not available at the same time.

TOSHIBA AMERICA INFORMATION SYSTEMS, INC.

Security & Network Video Products

9740 Irvine Boulevard,

Irvine California 92618-1697

Phone Number: (877)696-3822

Free Manuals Download Website

<http://myh66.com>

<http://usermanuals.us>

<http://www.somanuals.com>

<http://www.4manuals.cc>

<http://www.manual-lib.com>

<http://www.404manual.com>

<http://www.luxmanual.com>

<http://aubethermostatmanual.com>

Golf course search by state

<http://golfingnear.com>

Email search by domain

<http://emailbydomain.com>

Auto manuals search

<http://auto.somanuals.com>

TV manuals search

<http://tv.somanuals.com>