



Owner's Manual

WDECT 2305

**Optional Cordless
Handset and
Charging Cradle**

**For use with
Multi Handset Cordless
Systems: WDECT2315/
WDECT2355 Series**

**Wide Band Digital
Technology provides
the clearest sound
and the best privacy.**

Uniden®

Uniden Company Philosophy

To bring outstanding wireless communication products to people's lives throughout the world.

Welcome

Congratulations on your purchase of this Uniden WDECT2305 optional handset and charger. This additional handset is for use with the Uniden WDECT2315 and WDECT2355 base. You can place a fully featured cordless handset anywhere in your home where AC power is available to connect the handset charging cradle. THE WDECT2315 and WDECT2355 SERIES WILL SUPPORT UP TO 4 HANDSETS.

IMPORTANT

The WDECT2305 will not operate unless it has been registered to a Uniden WDECT2315 or WDECT2355 series. Before the additional handset can be used, the battery must be charged and it must be registered with the base.

This manual describes only the instructions specific to the additional handset. For detailed operation, refer to the owner's manual supplied with the original unit.

To purchase additional handsets (WDECT2305) contact your local Uniden Dealer or visit our web site at www.uniden.com.au or www.uniden.co.nz

Checking the Package Contents

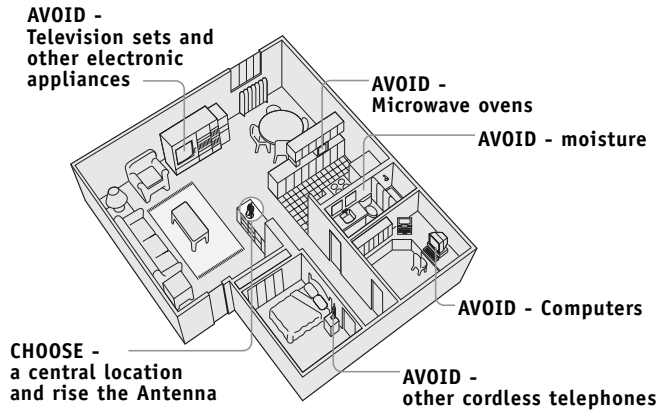
Make sure you have received the following items in the package. If any of these items are missing or damaged, contact your retailer.

- Cordless Handset
- Charger
- Battery
- AC Adapter
- Beltclip
- This Owner's Manual
- Other Printed Material

Installation & Safety

Choosing the best location for your phone.

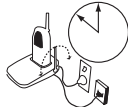
When choosing a location for your phone there are a number of appliances the phone should not be near, and areas you should avoid.



AVOID - Moisture



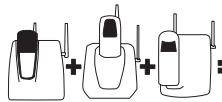
CHARGE - the new phone for 17 - 20 hrs.



Don't - overload the power outlet.



AVOID - multi power boards.



AVOID - connecting more than **3** phones as ringing may be impaired

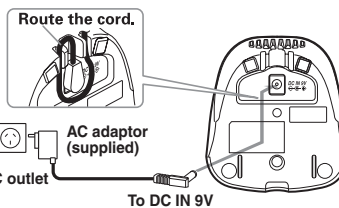
Note: Ringing will not be impaired by adding extra cordless handsets.



- This symbol indicates important operating and servicing instructions.
- The earcap of this telephone may attract and retain small metallic objects.

Connect the Charger

1 Connect the AC adapter to the **DC IN 9V** jack and to a standard AC wall outlet.



2 Set the charger on a desk or tabletop, and place the handset in the charger with the keypad facing forward.

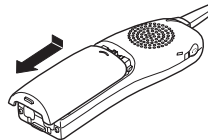
3 Make sure the **charge** LED illuminates. If the LED does not illuminate, check to see that the AC adapter is plugged in and that the handset makes good contact with the charger charging contacts.



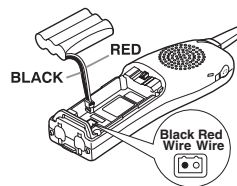
- Use only the supplied AC adapter. Do not use any other AC adapter.
- Place the charger close to the AC outlet so that you can unplug the AC adapter easily.

Installing the Battery Pack

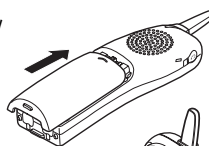
1 Press down on the battery cover release and slide the cover down until it comes off.



2 Plug the battery pack connector (red & black wires) into the jack inside the battery compartment. (The connector notches fit into the grooves of the jack only one-way.) Match the wire colors to the polarity label in the battery compartment, and push the connector in until you hear a click.



- 3 Make sure you have a good connection by slightly pulling on the battery wires. If the connection is secure, the battery jack will remain in place.
- 4 Place the battery case cover back on the handset by sliding it upwards until it clicks into place.
- 5 Place the handset in the charging cradle with the keypad facing forward.



- **Use only the Uniden battery (BT-446) supplied with your phone.** Replacement batteries are also available through the nearest Uniden dealer. (See page 1.)
- Recharge your handset on a regular basis by returning the handset to the charger after each phone call.

Battery Information

Battery use time (per charge)

From fully charged (15-20 hours charge time)

- Up to 7 hours continuous use (up to 5 hours when the Clarity Booster is On)
- Up to 10 days when the handset is in the standby mode (up to 15 hours in the DirectLink mode)




Recharge your handset on a regular basis by returning the handset to the charger after each phone call.

Low battery alert

When the batteries are very low and need to be charged, the phone is programmed to eliminate functions in order to save power.

The batteries need to be charged when :

- The empty battery icon  appears.
- "Low Battery" appears in the display.

If the phone is in the standby mode, none of the keys will operate. If you are on a call, complete your conversation as quickly as possible, and return the handset to the charging cradle.

Cleaning the battery charging contacts

To maintain a good charge, it is important to clean the charging contacts on the handset once a month.

Use a dry cloth or pencil eraser to clean.



contacts

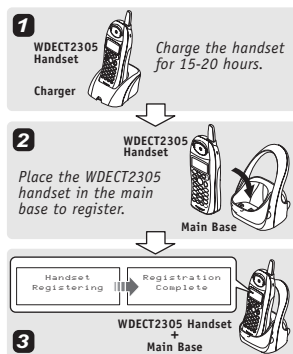


Do not use paint thinner, benzene, alcohol, or other chemical products. Doing so may discolor the surface of the telephone and damage the finish.

Register the Handset

YOU NEED TO REGISTER THE WDECT2305 TO THE MAIN BASE BEFORE USE!

- 1** Before registering the handset, the battery pack must be charged for 15-20 hours.
- 2** Place the extra handset in the main base unit to begin registration. (Picture is the WDECT2315 series main base.)
- 3** While the handset is registering, Handset Registering will appear in the LCD. When "Registration Complete" is displayed, the handset has been registered to the base. If "Registration Failed" appears, please try these steps again.



- The handset can be registered when the main base is in standby mode.
- Standby Mode - The handset is not in use and **(talk)/flash** has not been pressed.

Warranty

One Year Limited Warranty

Important : Evidence of original purchase is required for warranty service.

Warrantor : Uniden Australia Pty Limited A.B.N. 58 001 865 498
Uniden New Zealand Limited

ELEMENT OF WARRANTY : Uniden warrants to the original retail owner for the duration of this warranty, its WDECT2305 (herein after referred to as the Product), to be free from defects in materials and craftsmanship with only the limitations or exclusions set out below. Warranty is only valid in original country of purchase.

WARRANTY DURATION : This warranty to the original retail owner only, shall terminate and be of no further effect 12 months after the date of original retail sale. This warranty will be deemed invalid if the product is:

- (A) Damaged or not maintained as reasonable and necessary,
- (B) Modified, altered or used as part of any conversion kits, subassemblies, or any configurations not sold by Uniden,
- (C) Improperly installed,
- (D) Repaired by someone other than an authorized Uniden Repair Agent for a defect or malfunction covered by this warranty,
- (E) Used in conjunction with any equipment or parts or as part of a system not manufactured by Uniden.

PARTS COVERED : This warranty covers for one (1) year, the Charger Unit and Handset only. All accessories (AC Adapter etc) are covered for 90 days only.

STATEMENT OF REMEDY : In the event that the product does not conform to this warranty at any time while this warranty is in effect, the warrantor at its discretion, will repair the defect or replace the product and return it to you without charge for parts or service. THIS WARRANTY DOES NOT COVER OR PROVIDE FOR THE REIMBURSEMENT OR PAYMENT OF INCIDENTAL OR CONSEQUENTIAL DAMAGES. THIS GUARANTEE IS IN ADDITION TO AND DOES NOT IN ANY WAY AFFECT YOUR RIGHTS UNDER THE CONSUMER GUARANTEE ACT.

PROCEDURE FOR OBTAINING PERFORMANCE OR WARRANTY : In the event that the product does not conform to this warranty, the Product should be shipped or delivered, freight pre-paid, with evidence of original purchase (eg. a copy of the sales docket), to the warrantor at :

UNIDEN AUSTRALIA PTY LIMITED
SERVICE DIVISION
345 Princes Highway, Rockdale NSW 2216
Fx (02) 9599 3278

UNIDEN NEW ZEALAND LIMITED
SERVICE DIVISION
150 Harris Road, East Tamaki, Auckland
Fx (09) 274 4253

www.uniden.com.au

www.uniden.co.nz

Customers in other States should ship or deliver the Product freight pre-paid to their nearest Uniden Authorized Repair Centre (Contact Uniden for the nearest Warranty Agent to you).

THANK YOU
FOR PURCHASING A UNIDEN PRODUCT

© 2004
Uniden Australia Pty Limited
Uniden New Zealand Limited
Printed in China
UUZZ01881BZ

Free Manuals Download Website

<http://myh66.com>

<http://usermanuals.us>

<http://www.somanuals.com>

<http://www.4manuals.cc>

<http://www.manual-lib.com>

<http://www.404manual.com>

<http://www.luxmanual.com>

<http://aubethermostatmanual.com>

Golf course search by state

<http://golfingnear.com>

Email search by domain

<http://emailbydomain.com>

Auto manuals search

<http://auto.somanuals.com>

TV manuals search

<http://tv.somanuals.com>