

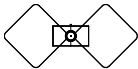
TV4

OWNER'S MANUAL



TV4
Indoor Television Antenna

TERK[®]
by AUDIOVOX



About Your TERK TV4

TV4

Thank you for choosing the TERK TV4. TERK antennas are designed to help deliver sharp, clear video reception. At TERK, our engineering department is dedicated to designing antennas that enhance both the latest technology and the aesthetics of any viewing environment. The TV4 installs in minutes, is easy to use and simple to adjust. Before using your antenna, please remove all parts from the box and read the owner's manual carefully.

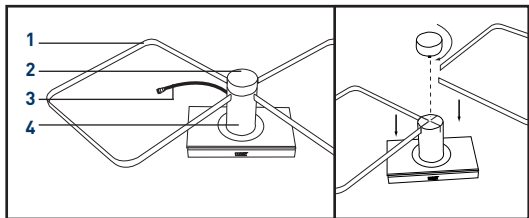
The TV4's unique and patented "Complementary Symmetry" technology utilizes two tuned elements, which have a large capacity for receiving VHF and UHF signals. This results in more stations with less noise and "ghosting" than conventional antennas. This unique design allows the antenna to stand only $4\frac{3}{4}$ " tall, rather than the standard 36" - 42" length of traditional rabbit ears. The TV4 is easy to adjust, requiring only a slight rotation to obtain best reception.

1



Assembly of Your TV4

TV4



- | | |
|-----------------------|-----------------------|
| 1. Receiving Elements | 3. Coaxial Cable |
| 2. Center Cap | 4. Center Control Arm |

Assembly:

As shown above, simply insert the receiving elements into the center control arm and hand-screw the center cap, making sure you have a snug fit.

2



Installing Your TV4

TV4

Connecting your TV4

There are two ways to connect your TV4. This will depend on your model of television.

For Televisions with One 75 Ohm Input for VHF and UHF:

1. Connect the coaxial cable from your TV4 to the "F" connector input marked VHF/UHF on your TV.

See Fig.1.

For Televisions with Separate 75 Ohm VHF and UHF Inputs:

1. Attach the band separator (included) to the coaxial cable attached to your TV4.
2. Screw in the VHF connector from the band separator to the VHF input on your TV or VCR.
3. Attach the 300 ohm twin wire from the band separator to the two screws marked UHF. See Fig.2.

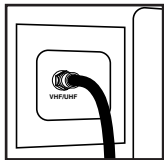


Fig. 1

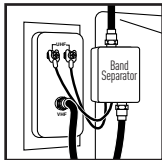


Fig. 2

3



Operating Your TERK TV4 Low-Profile Indoor Antenna

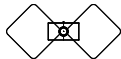
TV4

Holding the top of the center control arm, simply rotate the antenna to seek the best quality picture.

Please Note:

1. Do not force the center control arm past its normal rotation positions.
2. Do not place your TV4 near large metal objects or appliances that would create interference.
2. Do not lift your TV4 by its receiving elements or place objects on them.
4. Late model televisions have on-screen menu controls for viewing VHF/UHF “Off-Air” or cable broadcasts. Please ensure that this menu control is at the proper “Off-Air” position.

4



Locating Your TV4

TV4

Your TV4 is a precision instrument and should be placed in a location that is best for receiving TV signals. It can be placed on top of any standard TV for ease of adjustment.

5



Frequently Asked Questions

TV
4

- Q. I have a cable ready TV. Why am I not getting any channels above 13?
- A. The tuners inside of cable ready TVs have two modes. One mode is for cable and the other mode is for antenna. When the TV is in cable mode, and you are using an antenna, you will not be able to receive any channels above 13. To fix this, simply access the menu of your TV and switch the TV from Cable/CATV mode to ANT/AIR mode.
- Q. I have my TV in a metal cabinet. Will the antenna work for me?
- A. Any large metal objects will prevent the antenna signal from reaching the antenna. You must place the antenna outside of or above the metal cabinet.
- Q. My home has aluminum siding/insulation. Where should I place my antenna?
- A. Place the antenna near a window to minimize interference and improve your reception.
- Q. Can I use my antenna in a basement?
- A. TV signals cannot penetrate into basement locations due to their lower elevation.

Please Note:

Other variables, which are not related to antenna performance, can effect your reception. These include distance from the source transmitting the desired station, and man-made and natural conditions. Example: Obstacles such as buildings between the transmitting source and your antenna.

6

Performance Specifications

Channels:

VHF: 2-13

UHF: 14-69

Operating Bandwidth: 54 MHz to 820 MHz

Output Impedance: 75 ohms

Dimensions (with elements): 4³/₄"H x 25"W x 12"D

Limited Warranty

Audiovox Corporation (Audiovox) warrants this product against defects in materials or workmanship for one (1) year from the date of purchase. During this period, this product will be replaced without charge. This warranty does not cover any damage due to acts of nature, commercial use, accident, misuse, abuse or negligence. This warranty is only valid in the USA. Replacement as provided under this warranty is the exclusive remedy of the consumer.

Audiovox shall not be liable for any incidental or consequential damages for breach of any express or implied warranty on this product, except to the extent that limitations of this sort are prohibited by applicable law.

THERE ARE NO IMPLIED WARRANTIES OF MERCHANTABILITY OR FITNESS FOR A PARTICULAR PURCHASE EXCEPT TO THE EXTENT THAT IMPLIED WARRANTIES OR EITHER SORT ARE REQUIRED BY APPLICABLE LAW, AND IN SUCH CASE, EACH WARRANTY IS LIMITED IN DURATION TO THE ONE YEAR.



For Customer Service
Visit Our Website At
www.audiovox.com

Product Information, Photos,
FAQ's, Owner's Manuals

**For customer service and
technical information:: 1.800.290.6650**

Free Manuals Download Website

<http://myh66.com>

<http://usermanuals.us>

<http://www.somanuals.com>

<http://www.4manuals.cc>

<http://www.manual-lib.com>

<http://www.404manual.com>

<http://www.luxmanual.com>

<http://aubethermostatmanual.com>

Golf course search by state

<http://golfingnear.com>

Email search by domain

<http://emailbydomain.com>

Auto manuals search

<http://auto.somanuals.com>

TV manuals search

<http://tv.somanuals.com>