

Version 1.10 Upgrade Manual

Version 1.10 of the firmware adds the following functionality to PSR-S910 and PSR-S710 models.

- Support for the Wi-Fi Protected Access (WPA) wireless encryption standard (with the exception of certain USB-LAN adaptors*1)
- Support for the Wi-Fi Protected Setup (WPS)*2 standard, which makes it easier to setup wireless home networks (with the exception of certain USB-LAN adaptors*1)
- Support for the following USB-LAN adaptors.

Wireless:	Buffalo WLI-UC-GN	Buffalo WLI-UC-GNHP	Planex GW-USMicroN	Planex GW-USMini2N
	Edimax EW-7711UAn	Edimax EW-7711UTn	Hawking HWUN3	Tenda W311U
	Belkin F6D4050	LogiLink WL0049A	LogiLink WL0054	
Wired:	LINKSYS USB300M	AIRLINK101 ASOHOUSB 10/100Mbps	Fast Ethernet USB 2.0 Adapter	
	macally AIR2NET	INTELLINET Hi-Speed USB 2.0 to Fast Ethernet Adapter		

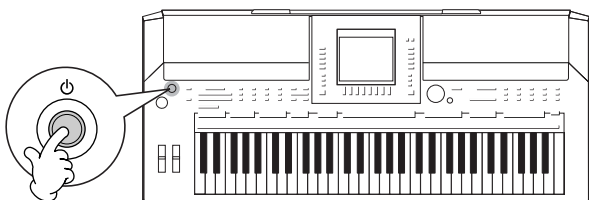
*1: For more details, please visit the Yamaha Piano / Keyboard website (below) and refer to the list of USB devices confirmed as working with our products. <http://music.yamaha.com/download>

*2: For more details, please refer to the Internet Connection Guide, which can be downloaded from the Yamaha Manual Library website. <http://www.yamaha.co.jp/manual/english/>

Confirming the Current Version

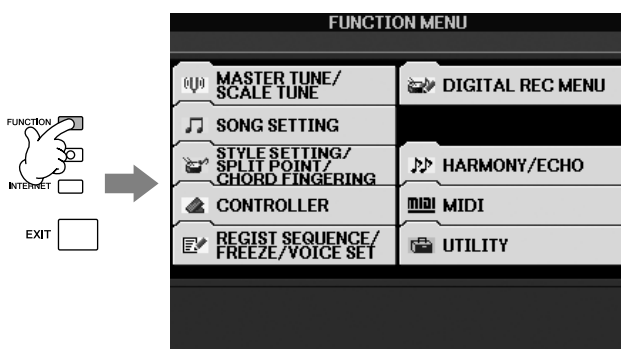
1. Turn on the PSR-S910/S710.

This can be done by pressing the [STANDBY/ON] switch located at the left of the front panel.



2. Confirm the instrument's current firmware version as follows.

2-1 Press the [FUNCTION] button.



2-2 Press the [J] (UTILITY) button.

2-3 Using the TAB [◀] / [▶] buttons, select the OWNER tab and display the Owner setting screen.

2-4 Press the [7▲] (VERSION) button to display the current firmware version. If the displayed version number is less than 1.10, the firmware should be upgraded.

2-5 Press the [8▲] (EXIT) button or the [EXIT] button to close the window.

3. Turn off the PSR-S910/S710.

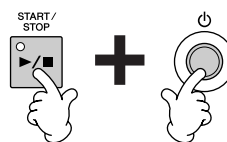
This can be done by pressing the [STANDBY/ON] switch located at the left of the front panel.

Upgrading the Firmware

To upgrade the firmware, place the upgrade data on a USB flash memory device and then carry out the upgrading procedure as described below.

1. Plug the USB flash memory device containing the upgrade data into the PSR-S910/S710.

2. Hold down the [START/STOP] button and press the [STANDBY/ON] switch.



Continue to hold down the [START/STOP] button until the following message is displayed.

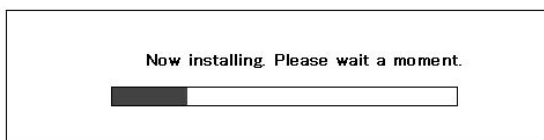
To start installation, please press the [START/STOP] button.

To delete the update program, please press the [BREAK] button.

3. Install the upgrade data.

To do so, release the [START/STOP] button and then press it once again.

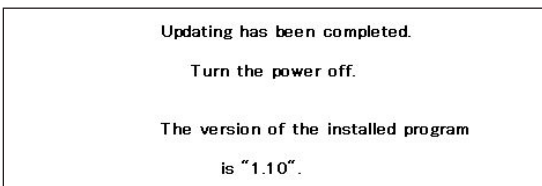
After indicating that data is being loaded, the PSR-S910/S710 will begin to install the new version of the firmware. The following message is displayed at this time. Upgrading of the firmware takes approximately 5 minutes.



CAUTION

The USB flash memory device must not be unplugged and the instrument must not be turned off while the firmware is being installed. Failure to observe this precaution may render the PSR-S910/S710 unfit for use.

The following message is displayed upon completion of the firmware installation process.



4. Turn off the PSR-S910/S710 and unplug the USB flash memory device.

Reconfirming the Current Version

After any firmware upgrade, it is recommended that you confirm the current version once again as described below.

1. Turn on the PSR-S910/S710.

This can be done by pressing the [STANDBY/ON] switch located at the left of the front panel.

2. Confirm the instrument's current firmware version as follows.

2-1 Press the [FUNCTION] button.

2-2 Press the [J] (UTILITY) button.

2-3 Using the TAB [◀] / [▶] buttons, select the OWNER tab and display the Owner setting screen.

2-4 Press the [7▲] (VERSION) button to display the current firmware version.

If the upgrade process has been completed successfully, version 1.10 will be shown in the window displayed. If the version has not changed, it is likely that the installation procedure was not completed successfully. In such a case, repeat the procedure carefully as described herein.

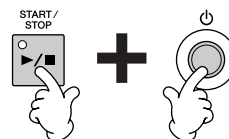
3. Press the [8▲] (EXIT) button or the [EXIT] button to close the window.

Deleting Upgrade Data

Deletion using the instrument:

Version 1.10 of the firmware for PSR-S910 and PSR-S710 models makes it possible to delete upgrade data from a USB flash memory device using the instrument itself. To do so, proceed as follows.

1. Plug the USB flash memory device containing the upgrade data into the PSR-S910/S710.
2. Hold down the [START/STOP] button and press the [STANDBY/ON] switch.



Continue to hold down the [START/STOP] button until the following message is displayed.



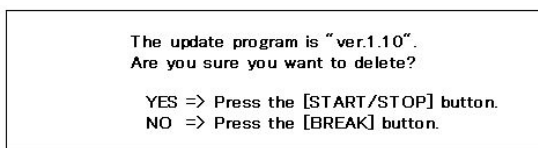
CAUTION

The USB flash memory device must not be unplugged and the instrument must not be turned off at this time. Failure to observe this precaution may render the PSR-S910/S710 unfit for use.

3. Press the [BREAK] button to delete the upgrade data.

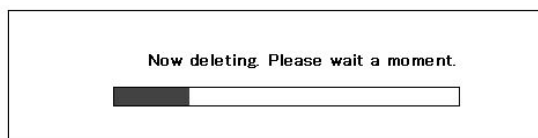


The following confirmation message will be displayed.



4. To delete the upgrade data, release the [START/STOP] button and then press it once again.

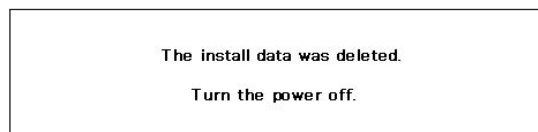
The PSR-S910/S710 will begin deleting the upgrade data. The following message is displayed at this time.



CAUTION

The USB flash memory device must not be unplugged and the instrument must not be turned off while the upgrade data is being deleted. Failure to observe this precaution may result in the USB flash memory device being permanently damaged.

The following message is displayed upon completion of the data deletion process.



5. Turn off the PSR-S910/S710 and unplug the USB flash memory device.

This can be done by pressing the [STANDBY/ON] switch located at the left of the front panel.

Free Manuals Download Website

<http://myh66.com>

<http://usermanuals.us>

<http://www.somanuals.com>

<http://www.4manuals.cc>

<http://www.manual-lib.com>

<http://www.404manual.com>

<http://www.luxmanual.com>

<http://aubethermostatmanual.com>

Golf course search by state

<http://golfingnear.com>

Email search by domain

<http://emailbydomain.com>

Auto manuals search

<http://auto.somanuals.com>

TV manuals search

<http://tv.somanuals.com>