

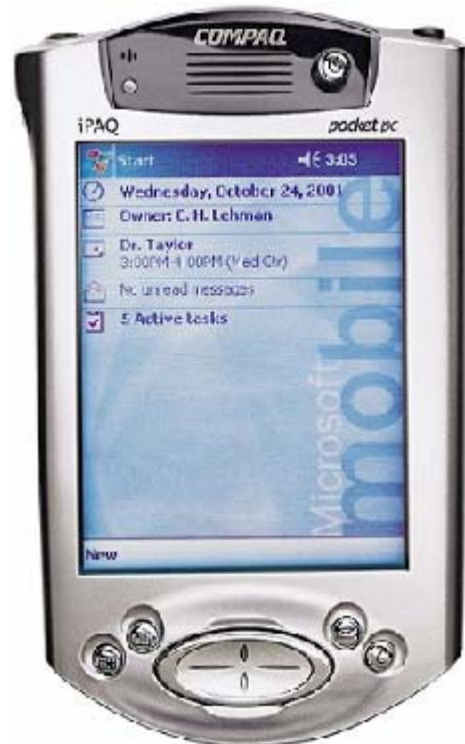
HP EMEA Wireless Solutions



i n v e n t

Nokia 6310/6310i and *IPAQ* 3870/3970 Bluetooth configuration guide

Version 1.2, July 2002



How to connect the Nokia 6310/6310i and the H3870/3970/BT wireless pack to GPRS

Background:

This document will describe how to connect a Nokia 6310 with the new iPAQ 3870/3970 or any other iPAQ with a Bluetooth wireless pack. With this configuration you will be able to connect the Internet using BT as carrier between the devices and GPRS as connection to Internet. This setup can easily be modified to use the GSM network instead of the GPRS.

Prerequisite:

This installation guide was made using the following hardware and software: (If you are using a later version there might be some changes in the steps below)

Hardware: iPAQ H3870 or iPAQ with BT wireless pack, Nokia 6310, GPRS subscription

Software: Bluetooth manager (Already installed into ROM on 3870/3970)

Versions of Firmware/Software used: iPAQ 3870 with ROM version 2.20.21

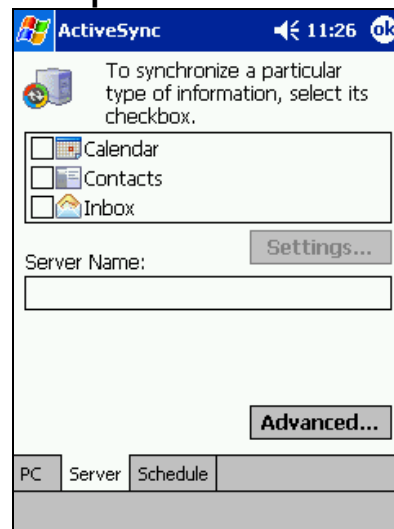
Bluetooth manager 1.1

6310i with software release 4.07

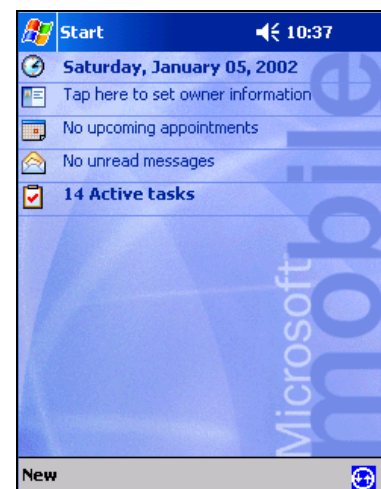
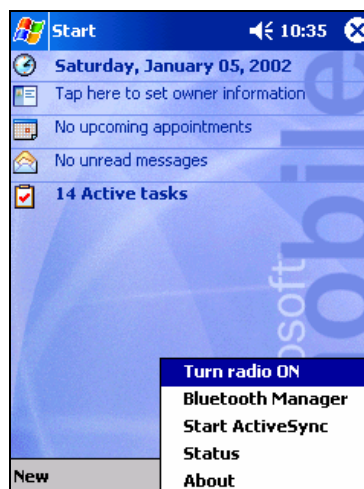
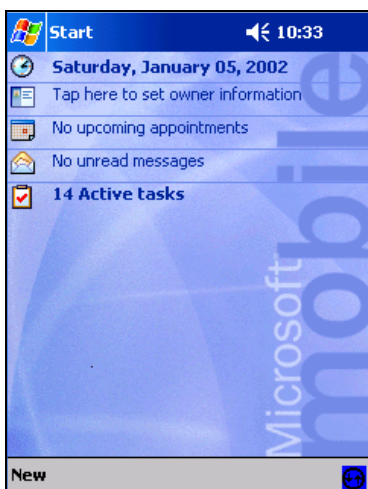
Installation guide:

1. If you are using a 3870 jump to step 3. If you are using a 3970 jump to step 4. If you have a BT wireless pack install Bluetooth manager from the iPAQ CD via ActiveSync. Also check whether there is a later version of the driver on the Compaq web site.
<http://www.compaq.com/support/files/handhelds/us/index.html>. If you have the H3870 the software is already installed into ROM.

- If you are using the Bluetooth wireless pack install "End user upgrade 1" (EUU 1). Download from <http://www.compaq.com/support/files/handhelds/us/download/13464.html>. To determine whether the upgrade is installed check ActiveSync. If you have a server tab under options the upgrade is installed continue with step 4.



- If you have a 3870 with ROM version 2.15 upgrade to 2.20 by downloading the file from <http://www.compaq.com/support/files/handheldiPAQ/us/download/14999.html>. After the installation continue with step 4
- On the iPAQ, check if the radio is turned on. If the Bluetooth icon in the lower right corner is dark like in the left picture below it is turned off. Turn it on by pressing the icon and choose "Turn radio ON". When the radio is turned ON like in the right picture below go to next step.



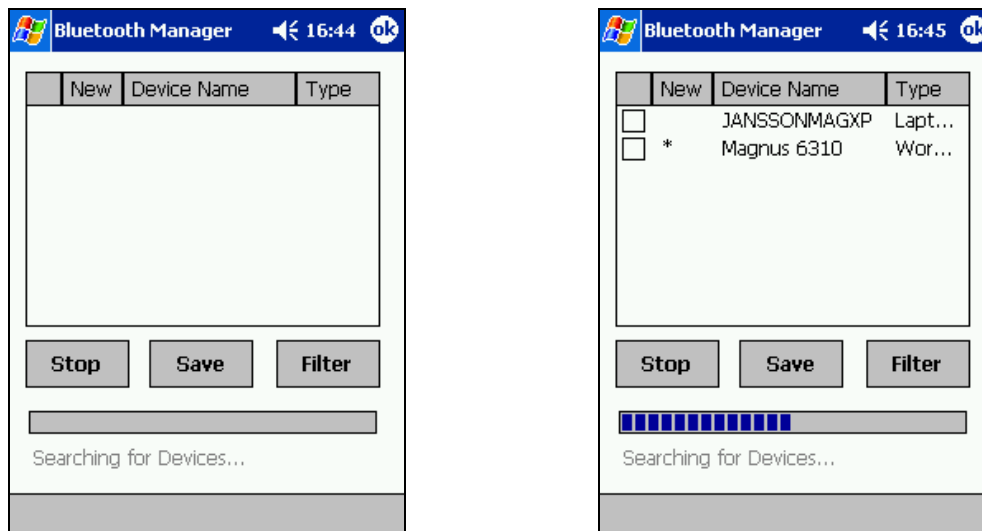
5. On the Nokia 6310 assign a name under Menu\Bluetooth\Bluetooth settings\My phones name. Make sure that the Bluetooth is turned on under Menu\Bluetooth.

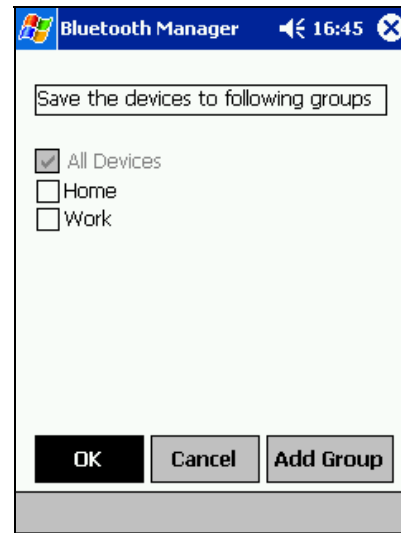
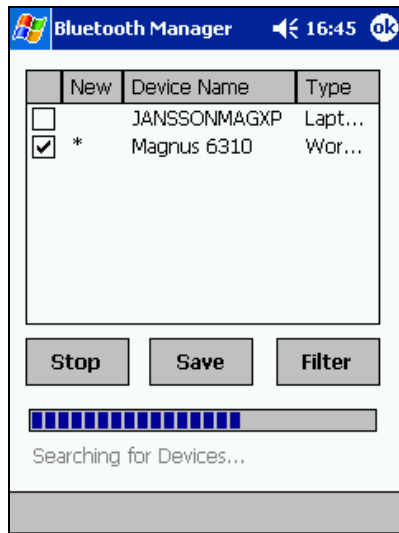


6. Still on the Nokia 6310 make sure that the "visibility parameter" is on under Menu\Bluetooth\Bluetooth settings. It should be set to "Shown to all". This is only necessary during the pairing process. (Be sure to set it back to Hidden after this installation guide is finished. This is a security precaution.)

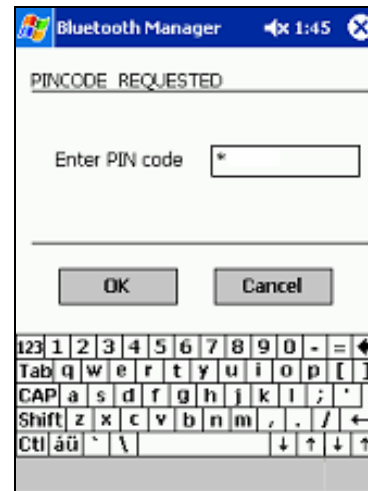
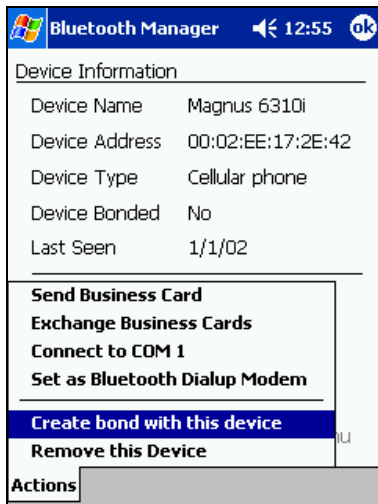


7. On your iPAQ, press start and select Bluetooth Manager. Press search. Check the box corresponding to your device name. Press save then ok. Press OK in the upper right corner.

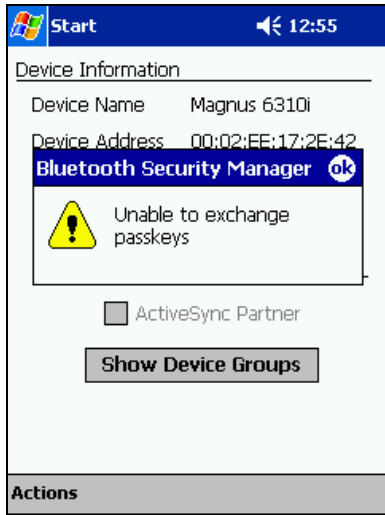




- Click on the icon corresponding to your device name in the BT manager. All the available services will be presented under the actions menu. Choose create bond with this device. On the iPAQ enter a Pin code for example a single "1" without pressing OK.



- This step needs to be followed exactly and be done in maximum 5 seconds. On the iPAQ press OK. When you get the "pair with XXXX" on your 6310 press accept. Enter the PIN from step 7 press OK. If you get an "Unable to exchange passkeys" you need to start over from step 8. It should be a "Bond successfully created" in the bottom of the screen on the iPAQ.



NOTE: If you get this message you need to start over from step 8



NOTE: This screen indicates a successful pairing with the iPAQ.



NOTE: When you get this on your iPAQ the Bond was successful



NOTE: If you get this after the "paired with XXXX" the connection was still successful.

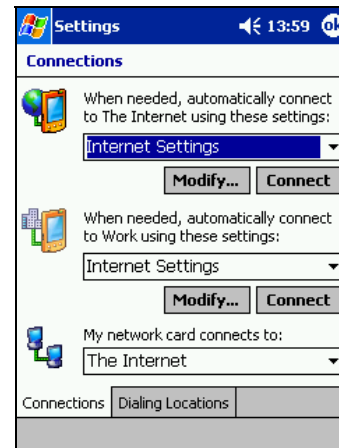
10. To turn off the need of pressing accept on the 6310 on each connection change menu\bluetooth\view paired devices\"name of the device\"\options. Change the "Request connection Authorization to No



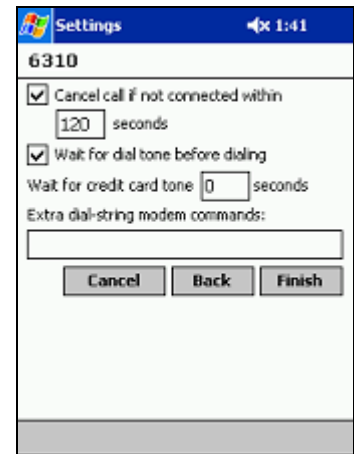
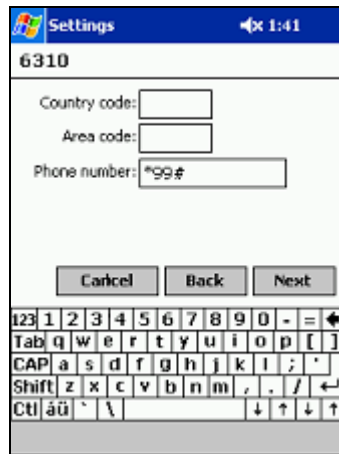
11. On the iPAQ, open the actions menu and choose "Set as Bluetooth Dialup Modem". Click OK on the upper right corner then go to next step.



12. On the iPAQ go to start setting\connections\connections. Choose dialing locations and then dialing patterns. Set G as dialing pattern on all three areas. Press OK and then connections. Press on the drop down list and choose "Internet settings" then press "modify".

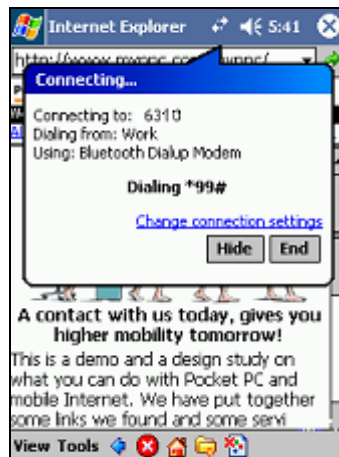


13. Choose new then rename the connection. Choose BT Dial-up modem press next. Enter *99# as phone number with no area code or country code. If you need to enter an APN phone number for the network you should use *99***APN number#. If you need to enter a APN enter that under the next setting "Extra dial-string modem commands" for example +cgdcont=1,"IP", "INTERNET." Where INTERNET is the APN. Press Finish, Press OK, Press OK.



14. Start Pocket Internet Explorer and enter a web URL in the top field and press the green arrow.

15. Leave the username, password and domain fields empty. Check "save password" then press Ok. You only have to do this once. On the Nokia 6310 you will get "Connect to XXXX" press yes. After a second you will get a "creating GPRS session" message. When the message "connected" appears, you are on-line.



16. To end the session, click the two arrows on the top and press End.

17. To make a new GPRS connection start Pocket Internet Explorer and enter a web URL in the top field then press the green arrow.

Free Manuals Download Website

<http://myh66.com>

<http://usermanuals.us>

<http://www.somanuals.com>

<http://www.4manuals.cc>

<http://www.manual-lib.com>

<http://www.404manual.com>

<http://www.luxmanual.com>

<http://aubethermostatmanual.com>

Golf course search by state

<http://golfingnear.com>

Email search by domain

<http://emailbydomain.com>

Auto manuals search

<http://auto.somanuals.com>

TV manuals search

<http://tv.somanuals.com>