



# User's Manual

A Socket 370 Processor based  
mainboard (100/66 MHz)

Supports PC100 Memory Modules

## **TRADEMARK**

All products and company names are trademarks or registered trademarks of their respective holders.

*These specifications are subject to change without notice.*

*Manual Revision 1.0  
May 24, 2001*



---

# Table of Contents

---

		<i>Page</i>
<b><i>Section 1</i></b>	<b><i>Introduction</i></b>	
	Components Checklist .....	1-1
	Form-Factor .....	1-2
	I/O Shield Connector .....	1-3
	Power-On/Off (Remote) .....	1-3
	System Block Diagram .....	1-4
<b><i>Section 2</i></b>	<b><i>Features</i></b>	
	Mainboard Features .....	2-1
<b><i>Section 3</i></b>	<b><i>Installation</i></b>	
	Mainboard Detailed Layout .....	3-2
	<b><i>Easy Installation Procedure</i></b>	
	CPU Insertion .....	3-3
	Jumper Settings .....	3-5
	System Memory Configuration .....	3-7
	Device Connectors .....	3-9
<b><i>Section 4</i></b>	<b><i>Award BIOS Setup</i></b>	
	BIOS Instructions .....	4-1
	Standard CMOS Setup .....	4-2
	BIOS Features Setup .....	4-3
	Chipset Features Setup .....	4-8
	Power Management Setup .....	4-11
	PNP/PCI Configuration .....	4-14
	Integrated Peripherals .....	4-17
	Load Setup Defaults .....	4-20
	Sensor and CPU Speed Setup .....	4-21
	Change Supervisor or User Password .....	4-23

---

---

IDE HDD Auto Detection .....	4-24
Save & Exit Setup .....	4-26
Exit Without Saving .....	4-26

***Appendix***

***Appendix A***

GHOST 5.1/6.03 Quick User's Guide .....	A-1
---	-----

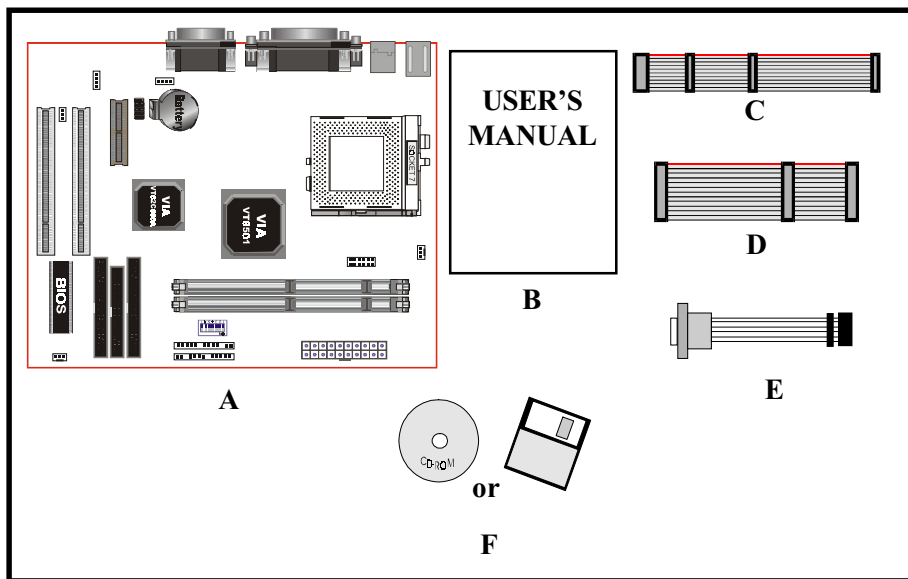
***Appendix B***

Update Your System BIOS .....	B-1
-------------------------------	-----

---

Components Checklist

- ✓ A. (1) One mainboard
- ✓ B. (1) One user's manual
- ✓ C. (1) Floppy ribbon cable
- ✓ D. (1) ATA-66 IDE ribbon cable
- ✓ E. (1) COM Port Connector
- ✓ F. (1) Driver and utility



# Introduction

---

## Mainboard Form Factor

---

The board is designed with MicroATX form factor - the new industry standard of chassis. The MicroATX form factor is essentially a Baby-AT baseboard rotated 90 degrees within the chassis enclosure and a new mounting configuration for the power supply. With these changes the processor is relocated away from the expansion slots, allowing them all to hold full length add-in cards. MicroATX defines a double height aperture to the rear of the chassis which can be used to host a wide range of onboard I/O. Only the size and position of this aperture is defined, allowing PC manufacturers to add new I/O features (e.g.; TV input, TV output, joystick, modem, LAN, etc.) to systems. This will help systems integrators differentiate their products in the marketplace, and better meet your needs.

- Smaller size promotes a smaller system size.
- I/O shield does not need to be retooled in an ATX 2.01 or later. Mainboard could be used in an ATX 2.01-compliant.
- A smaller power supply can be used. High integration on mainboard reduces the system costs.

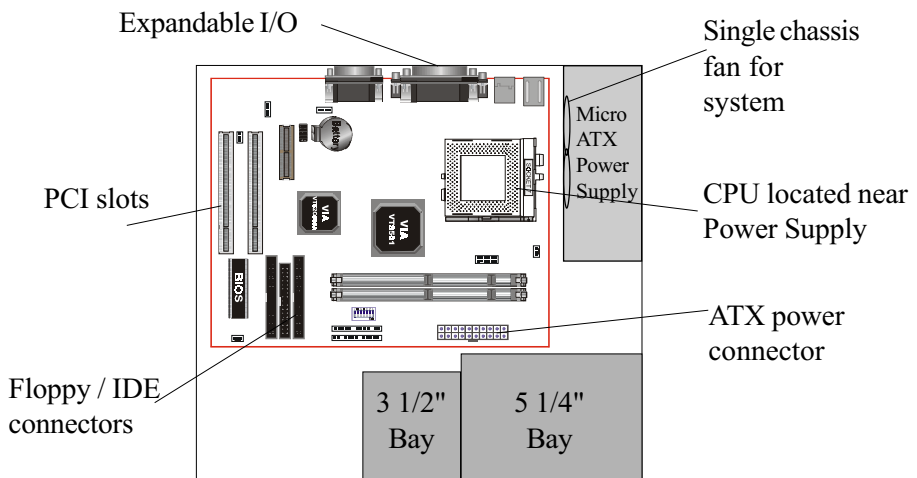
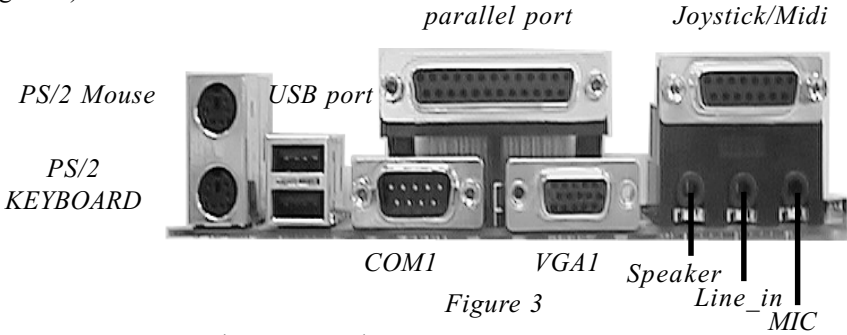


Figure 2: Summary of Micro ATX chassis features

## I/O Shield Connector

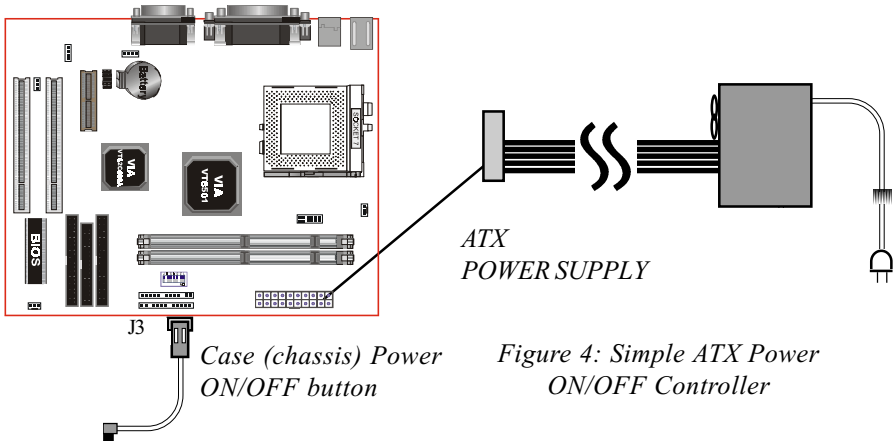
The board is equipped with an I/O back panel. Please use the appropriate I/O shield (figure 3).



## Power-On/Off (Remote)

The board has a single 20-pin connector for ATX power supplies. For ATX power supplies that support the **Remote On/Off** feature, this should be connected to the systems front panel for system Power On/Off button. The systems power On/Off button should be a momentary button that is normally open.

The board has been designed with "Soft Off" functions. You can turn Off the system from one of two sources: The first is the front panel Power On/Off button, and the other is the "Soft Off" function (coming from the onboard circuit controller) that can be controlled by the operating system such as Windows® 95/98/SE/ME or Windows® 2000.



# Introduction

## System Block Diagram

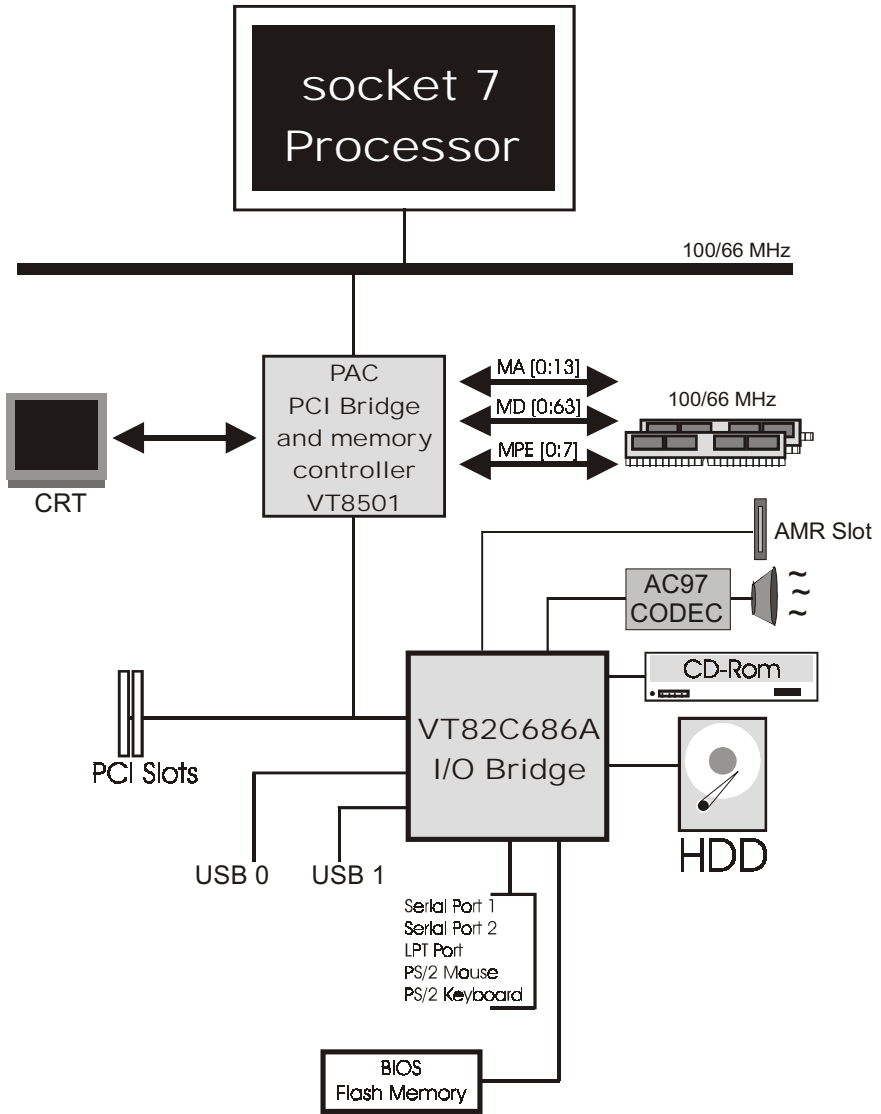


Figure 5: System Block Diagram



### Mainboard Features:

#### ◆ PROCESSOR

- Socket 7 CPUs: Operating at 166-550MHz
- AMD K6-2/III, Cyrix M II, Idt C6 / Winchip2 and Rise mP6 series
- Intel Pentium<sup>®</sup> /Pentium<sup>®</sup> Processor with MMX<sup>™</sup> Technology,

#### ◆ CHIPSET

- VIA Apollo MVP4 AGPset (VT8501 + VT82C686A)

#### ◆ DRAM MODULE

- 168pin DIMM x 2 for PC100 Memory
- DRAM Size: 32MB to 256MB

#### ◆ EXPANSION SLOT

- PCI x 2
- AMR Slot x 1

#### ◆ ONBOARD I/O

- On-Chip Multi I/O integrated with K/B, mouse, FDD, Parallel and Serial, Fast IR and Power-ON controllers

#### ◆ ONBOARD PCI / IDE

- PCI Bus IDE Port with PIO / Ultra DMA-66 x 2 (Up to 4 Devices)

#### ◆ I/O CONNECTOR

- PS/2 Mouse and PS/2 style Keyboard

## Features

---

### ◆ USB

- USB connector x 4 (2 for Opt.)

### ◆ BIOS

- Award Plug & Play BIOS

### ◆ Built-in AC97 Digital Audio (by VT82C686A)

- Dual full-duplex Direct Sound channels
- H/W Sound Blaster Pro for DOS legacy compatibility
- FM synthesis for legacy compatibility
- Supports game and MIDI port

### ◆ Built-in Trident AGP Core

### ◆ EXTENDED FUNCTION

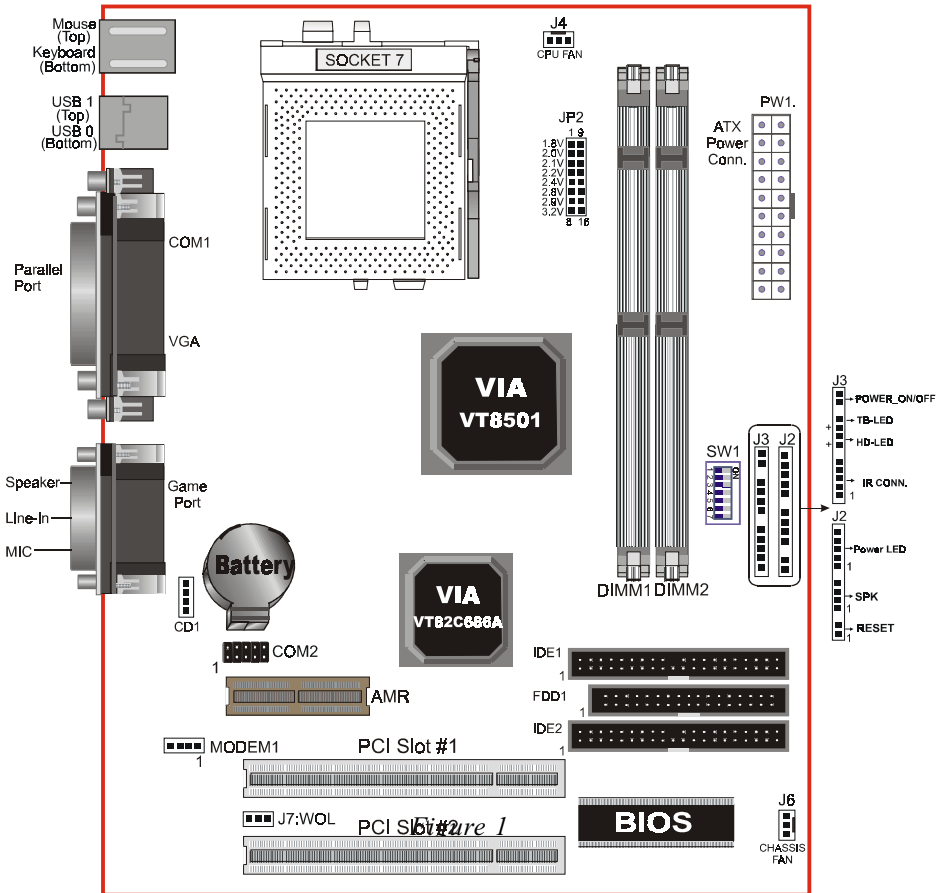
- Supports exclusive USDM(Unified System Diagnostic Manager) and Hardware Monitoring Function by VT82C686A
- Supports exclusive KBPO (KeyBoard Power On)
- Supports CPU Clock setting via DIP Switch
- Supports Wake-On-LAN Function

### ◆ FORM FACTOR

- 235mm x 180mm Micro ATX Size

Section 3  
INSTALLATION

**Mainboard Detailed Layout**



# Installation

---

## Easy Installation Procedure

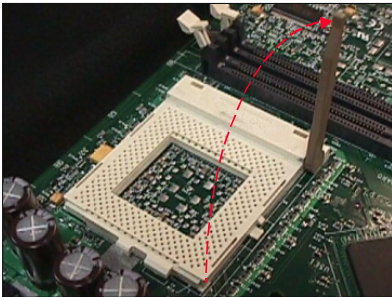
The following must be completed before powering on your new system:

- 3-1. CPU Insertion**
- 3-2. Jumper Settings**
- 3-3. System memory Configuration**
- 3-4. Device Connectors**

### Section 3-1 CPU Insertion

---

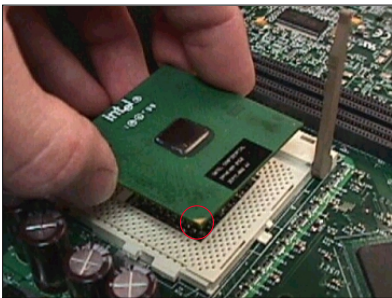
#### CPU Insertion



*Figure 2*

#### **Step 1**

Open the socket by raising the actuation lever.



*Figure 3*

#### **Step 2**

Insert the processor.

Ensure proper pin 1 orientation by aligning the FC-PGA corner marking with the socket corner closest to the actuation arm tip. The pin field is keyed to prevent mis-oriented insertion.

Don't force processor into socket. If it does not go in easily, check for mis-orientation and debris. Make sure the processor is fully inserted into the socket on all sides.

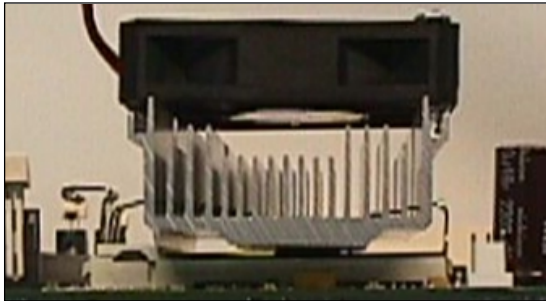


*Figure 4*

### Step 3

Close the socket by lowering and locking the actuation lever.

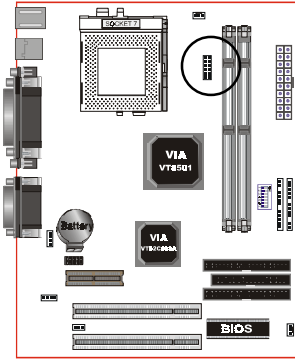
Note: Intel's reference design thermal solution is an active heatsink; an extruded aluminum heatsink based and a fan attached to the top on the fin array. (See Figure 5)



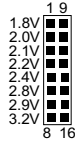
*Figure 5*

# Installation

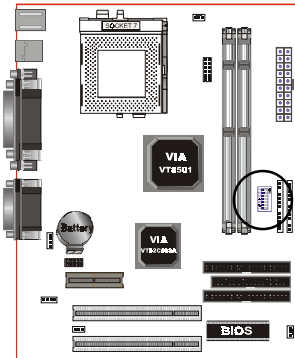
## Section 3-2 Jumper Settings



JP2: CPU Vcore Voltage Selection



JP2	CPU Vcore
1-9	1.8V
2-10	2.0V
3-11	2.1V
4-12	2.2V
5-13	2.4V
6-14	2.8V
7-15	2.9V
8-16	3.2V



SW1: CPU Speed Selection



SW1				Bus Clock
1	2	3	4	
ON				66MHz
			ON	75MHz
ON		ON		83MHz
ON	ON			90MHz
	ON	ON		95MHz
ON	ON	ON		100MHz
ON	ON		ON	105MHz
ON		ON	ON	115MHz

SW1			CPU Multiplier AMD/Cynx/IDTC6	CPU Multiplier IDT WinChip 2
5	6	7		
ON			2X	
ON	ON		2.5X	
	ON		3X	
			3.5X	
ON		ON	4X	
ON	ON	ON	4.5X	
	ON	ON	5X	2.33
		ON	5.5X	2.66

CPU Type				SW1							CPU Bus Clock	CPU Multiplier
Pentium/MMX AMD K6/K6-2/K6III IDT-C6	Cyrix /IBM 6x86MX/MII	IDT Winchip 2	Rise MP6	1	2	3	4	5	6	7		
166MHz	PR200			ON				ON	ON		66MHz	2.5X
	PR233						ON	ON	ON		75MHz	
	PR266	233MHz		ON		ON		ON	ON		83MHz	
	PR300		*PR333		ON	ON		ON	ON		95MHz	
250MHz	PR366	300MHz	*PR366	ON	ON	ON		ON	ON		100MHz	
200MHz	PR266	200MHz		ON					ON		66MHz	3X
	PR300	225MHz					ON		ON		75MHz	
250MHz	PR333	266MHz		ON		ON			ON		83MHz	
	PR400		*PR380		ON	ON			ON		95MHz	
300MHz	*PR433		*PR400	ON	ON	ON			ON		100MHz	
233MHz	PR300	233MHz		ON							66MHz	3.5X
	PR333						ON				75MHz	
	*PR400			ON		ON					83MHz	
333MHz	*PR466		*PR433		ON	ON					95MHz	
350MHz	*PR500		*PR466	ON	ON	ON					100MHz	
266MHz	*PR333	266MHz		ON				ON	ON		66MHz	4X
	*PR400						ON	ON	ON		75MHz	
333MHz	*PR466			ON		ON		ON	ON		83MHz	
380MHz	*PR533				ON	ON		ON	ON		95MHz	
400MHz	*PR550			ON	ON	ON		ON	ON		100MHz	
300MHz				ON				ON	ON	ON	66MHz	4.5X
450MHz				ON	ON	ON		ON	ON	ON	100MHz	
333MHz				ON					ON	ON	66MHz	5X
475MHz					ON	ON			ON	ON	95MHz	
*500MHz		266MHz		ON	ON	ON			ON	ON	100MHz	
366MHz				ON						ON	66MHz	5.5X
*550MHz		300MHz		ON	ON	ON				ON	100MHz	

# Installation

---

## Section 3-3 System Memory Configuration

### Memory Layout

The board supports (2) PC100 168-pin DIMMs (Dual In-line Memory Module). The DIMMs is for SDRAM (Synchronous DRAM) .

- DIMM SDRAM may be 83MHz (12ns), 100MHz (10ns), 125MHz (8ns) bus speed.
- If you use both 50ns and 60ns memory you must configure your BIOS to read 60ns.
- When using Synchronous DRAM we recommend using the 4 clock variety over the 2 clock.

Figure 6 and Table 1 show several possible memory configuration.

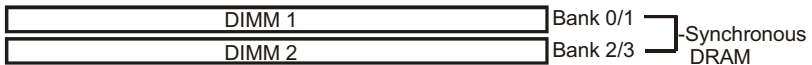


Figure 6

Total Memory	DIMM 1 (Bank 0/1)	DIMM 2 (Bank 2/3)
= 256MB Maximum	SDRAM* 32MB, 64MB, 128MB, 256MB X 1	None
= 512MB Maximum	SDRAM* 32MB, 64MB, 128MB, 256MB X 1	SDRAM* 32MB, 64MB, 128MB, 256MB X 1

Table 1

\* SDRAM supports 32, 64, 128, 256MB DIMM modules.

\* We recommend to use PC100 Memory Module for bus speed between 66MHz and 100MHz.

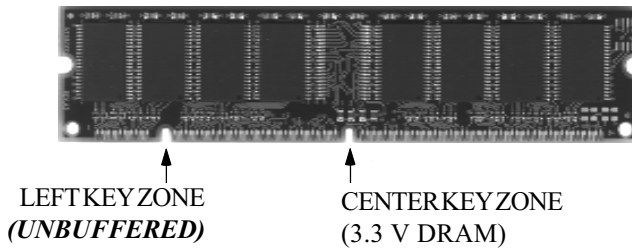
\* Using non-compliant memory with higher bus speed (over clocking) may severely compromise the integrity of the system.



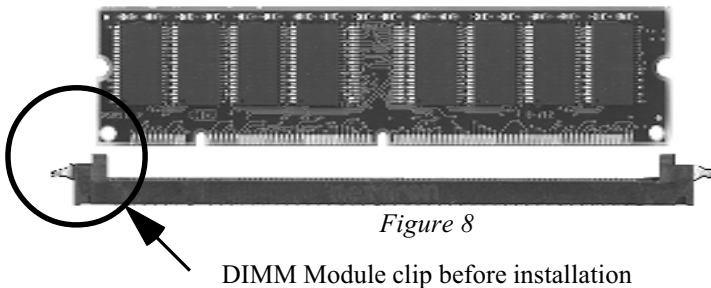
## DIMM Module Installation

Figure 7 displays the notch marks and what they should look like on your DIMM memory module.

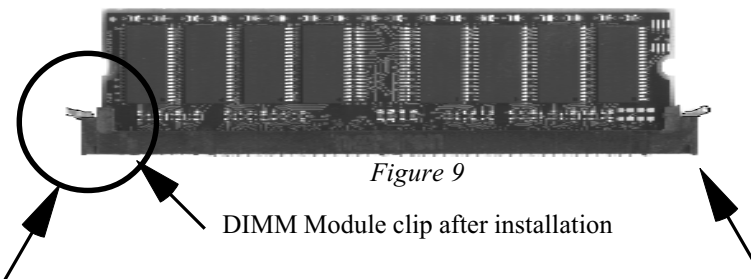
DIMMs have 168-pins and two notches that will match with the onboard DIMM socket. DIMM modules are installed by placing the chip firmly into the socket at a 90 degree angle and pressing straight down (figure 8) until it fits tightly into the DIMM socket (figure 9).



*Figure 7*



*Figure 8*

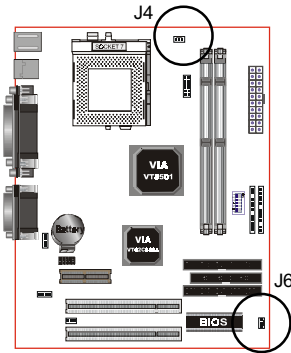
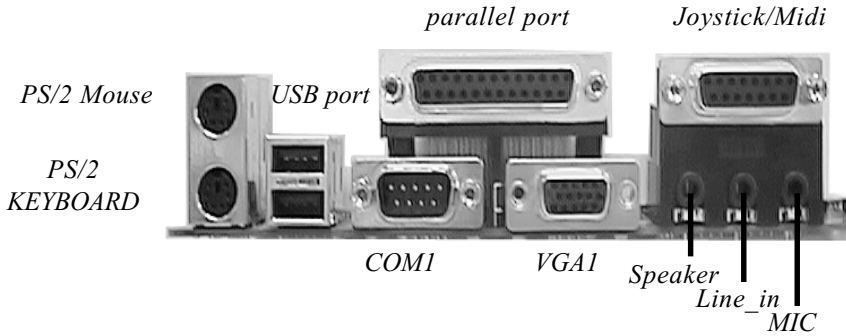


*Figure 9*

To remove the DIMM module simply press down both of the white clips on either side and the module will be released from the socket.

# Installation

## Section 3-4 Device Connectors



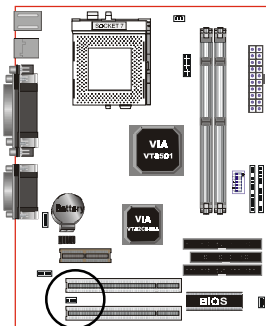
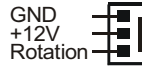
### J4/J6: CPU/Chassis Fan

- A plug-in for the CPU/Chassis Fan Power

CPU Fan



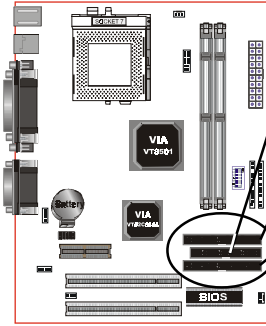
Chassis Fan



### J7: WOL (Wake On LAN) Connector

Reserved for NIC (Network Interface Card) to wake the system.

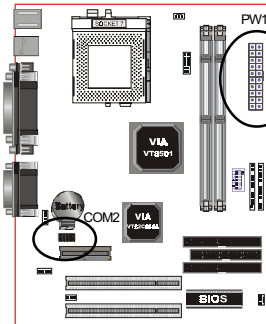




**FDD1:** Floppy Controller Connector (Black color)

**IDE1:** Ultra ATA-66 Primary IDE Connector (White color)

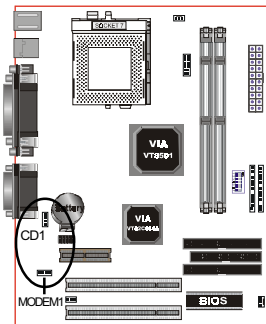
**IDE2:** Ultra ATA-66 Secondary IDE Connector (White color)



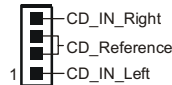
**PW1:** ATX Power Connector

- 20-pin power connector

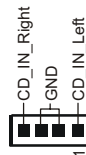
**COM2:** RS232 COM2 Connector



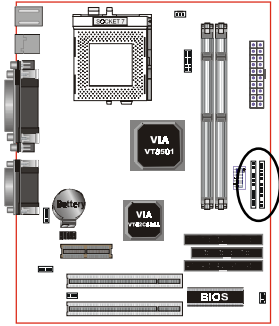
**CD1:** CD Audio\_IN Connector



**MODEM1:** Telephony Connector for Modem audio output



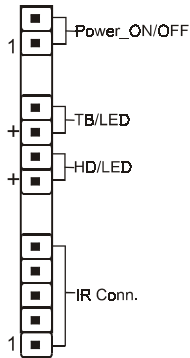
# Installation



## ◆ Power On/Off

(This is connected to the power button on the case. Using the Soft-Off by Pwr-BTTN feature, you can choose either Instant Off (turns system off immediately), or 4 sec delay (you need to push the button down for 4 seconds before the system turns off). When the system is in 4 sec delay mode, suspend mode is enabled by pushing the button momentarily.)

## J3



## ◆ TurboLED indicator

LED ON when higher speed is selected

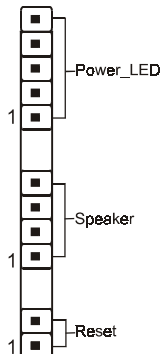
## ◆ IDELED indicator

LED ON when Onboard PCI IDE Hard disks is activate

## ◆ IR Connector

- |        |        |
|--------|--------|
| 1.VCC  | 4.GND  |
| 2.NC   | 5.IRTX |
| 3.IRRX |        |

## J2



## ◆ PowerLED

Power LED connector

- |                 |        |
|-----------------|--------|
| 1. Power LED(+) | 4. NC  |
| 2. N/C          | 5. GND |
| 3. GND          |        |

## ◆ Speaker

Connect to the system's speaker for beeping

- |            |        |
|------------|--------|
| 1. Speaker | 3. GND |
| 2. N/C     | 4. GND |

## ◆ Reset

Closed to restart system.



## Section 4

# AWARD BIOS SETUP

### BIOS Instructions

Award's ROM BIOS provides a built-in Setup program which allows user to modify the basic system configuration and hardware parameters. The modified data will be stored in a battery-backed CMOS, so that data will be retained even when the power is turned off. In general, the information saved in the CMOS RAM will stay unchanged unless there is a configuration change in the system, such as hard drive replacement or a device is added.

It is possible for the CMOS battery to fail, this will cause data loss in the CMOS only. If this does happen you will need to reconfigure your BIOS settings.

#### To enter the Setup Program :

Power on the computer and press the <Del> key immediately, this will bring you into the BIOS CMOS SETUP UTILITY.

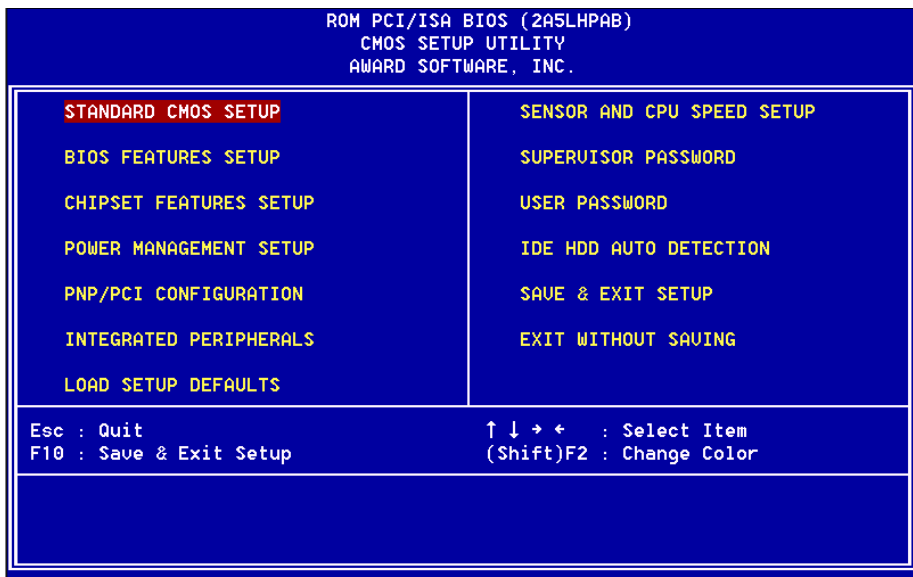


Figure 1: CMOS Setup Utility

# BIOS

The menu displays all the major selection items. Select the item you need to reconfigure. The selection is made by moving the cursor (press any direction key) to the item and pressing the 'Enter' key. An on-line help message is displayed at the bottom of the screen as the cursor is moved to various items which provides a better understanding of each function. When a selection is made, the menu of the selected item will appear so that the user can modify associated configuration parameters.

## 4-1 Standard CMOS Setup

Choose "Standard CMOS Setup" in the CMOS SETUP UTILITY Menu (Figure 2). The Standard CMOS Setup allows the user to configure system settings such as the current date and time, type of hard disk drive installed, floppy drive type, and display type. Memory size is auto-detected by the BIOS and displayed for your reference. When a field is highlighted (use direction keys to move the cursor and the <Enter> key to select), the entries in the field can be changed by pressing the <PgDn> or the <PgUp> key.

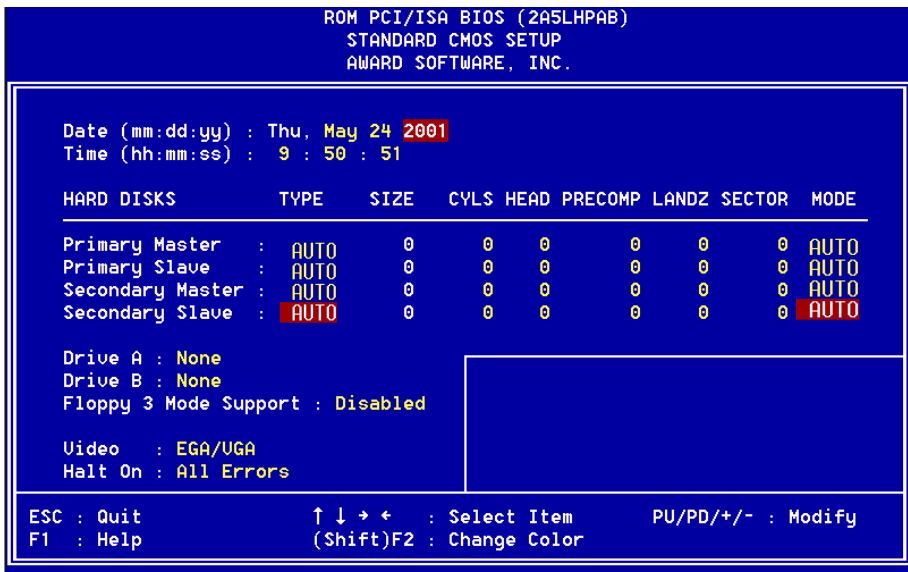


Figure 2: Standard CMOS Setup

*Note: If the hard disk Primary Master/Slave and Secondary Master/Slave are set to Auto, then the hard disk size and model will be auto-detected.*

*Note: The “Halt On:” field is used to determine when to halt the system by the BIOS if an error occurs.*

*Note: Floppy 3 Mode support is a mode used to support a special 3.5” drive used in Japan. This is a 3.5” disk that stores only 1.2 MB, the default setting for this is disabled.*

## 4-2 BIOS Features Setup

Selecting the “BIOS FEATURES SETUP” option in the CMOS SETUP UTILITY menu allows users to change system related parameters in the displayed menu. This menu shows all of the manufacturer’s default values for the EP-MVP4F.

Pressing the [F1] key will display a help message for the selected item.

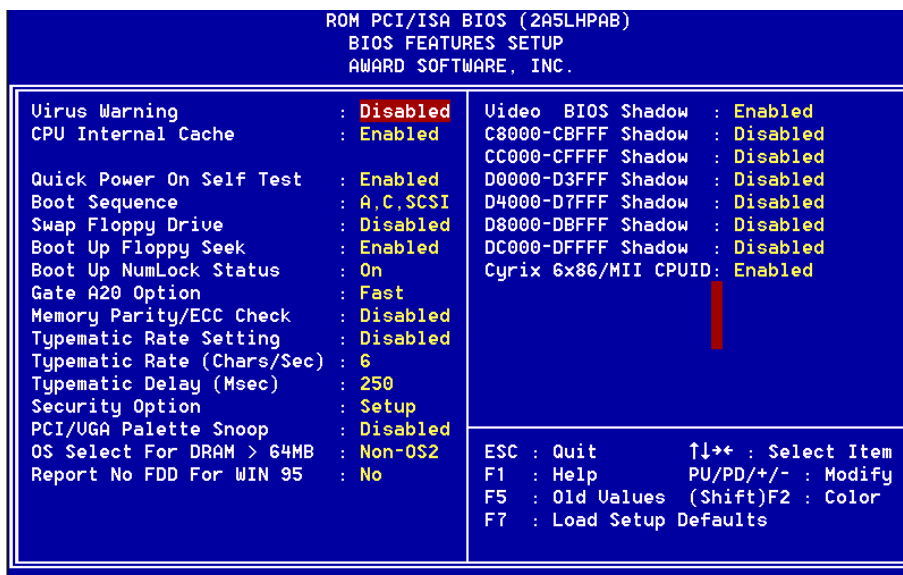


Figure 3: BIOS Features Setup



## BIOS

---

**Virus Warning:** During and after the system boots up, any attempt to write to the boot sector or partition table of the hard disk drive will halt the system and an error message will appear.

You should then run an anti-virus program to locate the virus. Keep in mind that this feature protects only the boot sector, not the entire hard drive.

The default value is Disabled.

**Enabled:** Activates automatically when the system boots up causing a warning message to appear when anything attempts to access the boot sector.

**Disabled:** No warning message will appear when anything attempts to access the boot sector.

Note: Many disk diagnostic programs that access the boot sector table can trigger the virus warning message. If you plan to run such a program, we recommend that you first disable the virus warning.

**CPU Internal Cache:** This controls the status of the processor's internal cache area. The default is Enabled.

**Enabled:** This activates the processor's internal cache thereby increasing performance.

**Disabled:** This deactivates the processor's internal cache thereby lowering performance.

**Quick Power On Self Test:** This category speeds up the Power On Self Test (POST). The default is Enabled.

**Enabled:** This setting will shorten or skip of the items checked during POST.

**Disabled:** Normal POST.

**Boot Sequence:** This category determines which drive is searched first by the O/S (Operating System). The default is A,C,SCSI.

The following is your list of options:

[A, C, SCSI] - [C, A, SCSI] - [C, CD-ROM, A] - [CD-ROM, C, A],[D, A,CD-ROM],  
[E, A, CD-ROM] - [F, A, CD-ROM] - [SCSI, A, C], [SCSI C, A] - [C Only]

**Swap Floppy Drive:** This will swap your physical drive letters A & B if you are using two floppy disks. The default is Disabled.

**Enabled:** Floppy A & B will be swapped under the O/S.

**Disabled:** Floppy A & B will be not swapped.

**Boot Up Floppy Seek:** During Power-On-Self-Test (POST), BIOS will determine if the floppy disk drive installed is 40 or 80 tracks. Only 360K type is 40 tracks while 760K, 1.2MB and 1.44MB are all 80 tracks. The default is Enabled.

**Enabled:** The BIOS will search the floppy disk drive to determine if it is 40 or 80 tracks.

**Disabled:** The BIOS will not search for the type of floppy disk drive by track number.

Note: BIOS can not tell the difference between 720K, 1.2MB and 1.44MB drive types as they are all 80 tracks.

**Boot Up NumLock Status:** This controls the state of the NumLock key when the system boots. The default is On.

**On:** The keypad acts as a 10-key pad.

**Off:** The keypad acts like the cursor keys.

**Gate A20 Option:** This refers to the way the system addresses memory above 1MB (extended memory). The default is Fast.

**Normal:** The A20 signal is controlled by the keyboard controller or chipset hardware.

**Fast:** The A20 signal is controlled by Port 92 or chipset specific method.

**Typematic Rate Setting:** This determines the keystrokes repeat rate. The default is Disabled.

**Enabled:** Allows typematic rate and typematic delay programming.

**Disabled:** The typematic rate and typematic delay will be controlled by the keyboard controller in your system.

**Typematic Rate (Chars/Sec):** This is the number of characters that will be repeated by a keyboard press. The default is 6.

**6:** 6 characters per second.

**8:** 8 characters per second.

**10:** 10 characters per second.

**12:** 12 characters per second.

**15:** 15 characters per second.

**20:** 20 characters per second.

**24:** 24 characters per second.

**30:** 30 characters per second.

**Typematic Delay (msec):** This setting controls the time between the first and the second character displayed by typematic auto-repeat. The default is 250.

## BIOS

---

*250: 250 msec.*

*500: 500 msec.*

*750: 750 msec.*

*1000: 1000 msec.*

**Security Option:** This category allows you to limit access to the System and Setup, or just to Setup. The default is Setup.

**System:** The system will not boot and the access to Setup will be denied if the correct password is not entered at the prompt.

**Setup:** The system will boot; but the access to Setup will be denied if the incorrect password is not entered at the prompt.

**PCI/VGA Palette Snoop:** This field controls the ability of a primary PCI VGA controller to share a common palette (When a snoop write cycles) with an ISA video card. The default is Disabled.

**Enabled:** If an ISA card is connected to a PCI VGA card via the VESA connector, and that ISA card connects to a VGA monitor, then that ISA card uses the RAMDAC of the PCI card.

**Disabled:** Disables the VGA card Palette Snoop function.

**OS Select For DRAM > 64MB:** Some operating systems require special handling. Use this option only if your system has greater than 64MB of memory. The default is Non-OS2.

**OS2:** Select this if you are running the OS/2 operating system with greater than 64MB of RAM.

**Non-OS2:** Select this for all other operating systems and configurations.

**Report No FDD For WIN 95:** Whether report no FDD for Win 95 or not.

**Video BIOS Shadow:** This option allows video BIOS to be copied into RAM. Video Shadowing will increase the video performance of your system. The default is Enabled.

**Enabled:** Video shadow is enabled.

**Disabled:** Video shadow is disabled.

**C8000 - CBFFF Shadow:**

**CC000 - CFFFF Shadow:**

**D0000 - D3FFF Shadow:**

**D4000 - D7FFF Shadow:**

**D8000 - DBFFF Shadow:**

**DC000 - DFFFF Shadow:**

These categories determine whether ROMs from option cards will be copied into RAM. This will be in 16K byte or 32K byte units, and the size will depend on chipset of the option card.

**Enabled:** Optional shadow is enabled.

**Disabled:** Optional shadow is disabled.

## 4-3 Chipset Features Setup

Choose the “CHIPSET FEATURES SETUP” in the CMOS SETUP UTILITY menu to display following menu.

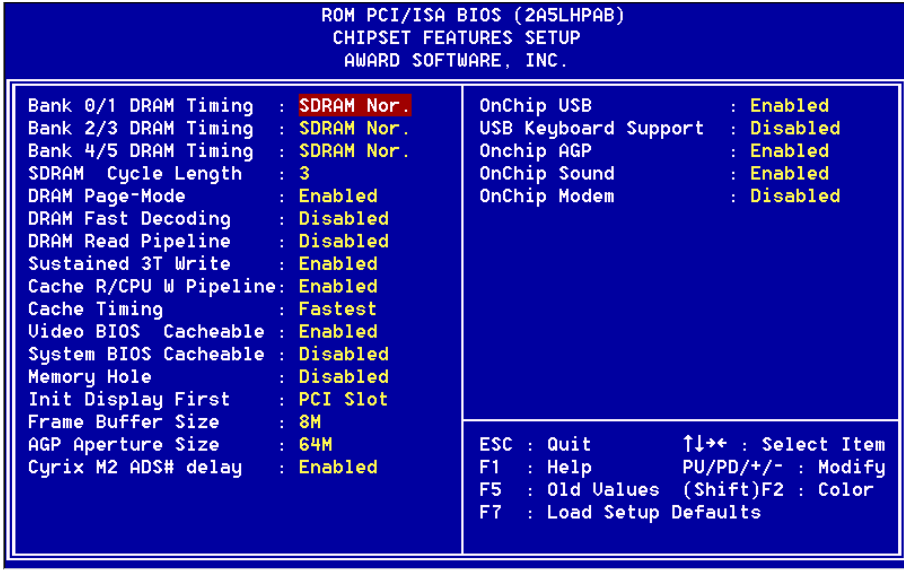


Figure 4: Chipset Features Setup

**Bank 0/1, 2/3, 4/5 DRAM Timing:** This value in this field is set by the system board manufacturer, depending on whether the board has paged DRAMs.

The Choice: Bank 0/1, 2/3, 4/5.

**SDRAM Cycle length:** This setting defines the CAS timing parameter of the SDRAM in terms of clocks. The default is 3.

2: Provides faster memory performance.

3: Provides better memory compatibility.

**DRAM Page-Mode:** This item will active or inactive chipset page registers.

**Enabled:** Page-Mode Enabled.

**Disabled:** No page registers update and non Page-Mode operation.

**DRAM Fast Decoding:** This item will effective DRAM operation sequential.  
The Choice: Enabled, Disabled.

**DRAM Read Pipeline:** You may select *Enabled* for this field when PBSRAMs are installed. Pipelining improves system performance.  
The Choice: Enabled, Disabled.

**Sustained 3T Write:** This item allow you to enable or disable direct map write back / write through secondary cache.  
The Choice: Enabled, Disabled.

**Cache R/CPU W Pipeline:** This item allows you to enable/disabled the cache timing.  
The Choice: Enabled, Disabled.

**Video BIOS Cacheable:** When enabled. The Video BIOS cache will cause access to video BIOS addressed at C0000H to C7FFFH to be cached, if the cache controller is also enabled  
The Choice: Enabled, Disabled.

**System BIOS Cacheable:** As with caching the Video BIOS above, enabling this selection allows accesses to the system BIOS ROM addressed at F0000H-FFFFFH to be cached, provided that the cache controller is enabled.  
The Choice: Enabled, Disabled.

**Memory Hole:** You can reserve this memory area for the use of ISA adaptor ROMs. The default is Disabled.

**Enabled:** This field enables the main memory (15~16MB) to remap to ISA BUS.

**Disabled:** Normal Setting.

Note: If this feature is enabled you will not be able to cache this memory segment.

**Init Display First:** If two video cards are used (1 AGP and 1 PCI) this specifies which one will be the primary display adapter.  
The default is PCI Slot.

**PCI Slots:** PCI video card will be primary adapter.

**AGP:** AGP video card will be primary adapter.

---

## BIOS

---

**Frame Buffer Size:** Specify the size of system memory to allocate for video memory, from 1 MB to 8 MB.

The Choice: 2MB, 4MB, 8MB.

**AGP Aperture Size:** The amount of system memory that the AGP card is allowed to share. The default is 64.

*4: 4MB of systems memory accessible by the AGP card.*

*8: 8MB of systems memory accessible by the AGP card.*

*16: 16MB of systems memory accessible by the AGP card.*

*32: 32MB of systems memory accessible by the AGP card.*

*64: 64MB of systems memory accessible by the AGP card.*

*128: 128MB of systems memory accessible by the AGP card.*

*256: 256MB of systems memory accessible by the AGP card.*

**OnChip USB:** Select Enabled if your system contains a Universal Serial Bus (USB) controller and you have a USB peripheral.

**USB Keyboard Support:** This controls the activation status of an optional USB keyboard that may be attached. The default is disabled.

**Enabled:** Enable USB keyboard support.

**Disabled:** Disable USB keyboard support.

**OnChip AGP:** This item allows you to enable/disable AGP function.

**OnChip Sound:** Turn on/off onchip sound device.

**OnChip Modem:** Turn on/off onchip software modem device.

## 4-4 Power Management Setup

Choose the “POWER MANAGEMENT SETUP” in the CMOS SETUP UTILITY to display the following screen. This menu allows the user to modify the power management parameters and IRQ signals. In general, these parameters should not be changed unless it’s absolutely necessary.

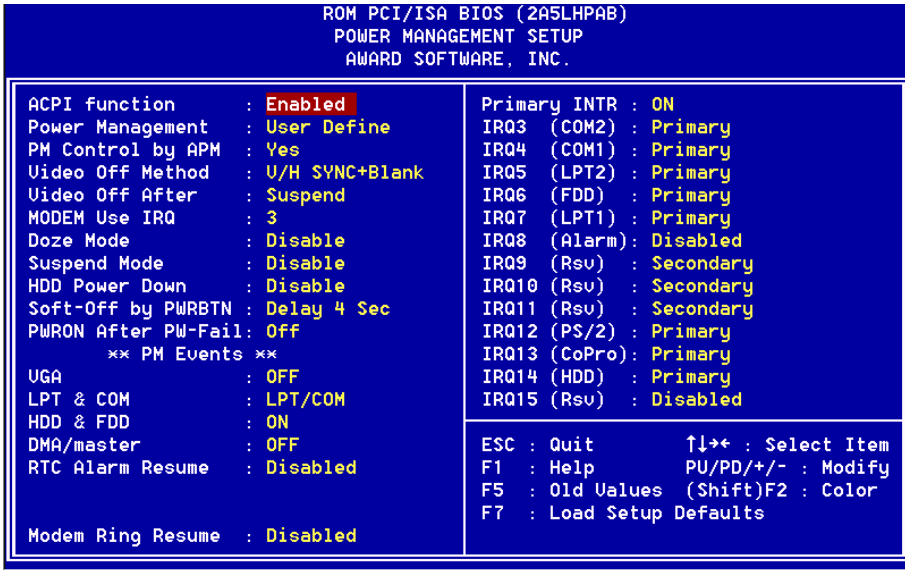


Figure 5: Power Management Setup

**ACPI Function:** This option allows you to select ACPI Function. The default is Enabled.

**Enabled:** Support ACPI function for new O.S

**Disabled:** No Support ACPI function.You can only change the content of Doze Mode, Standby Mode, and Suspend Mode when the Power Management is set to ‘User Define’.

**Power Management:** Use this to select your Power Management selection. The default is User define.

**Disabled:** The system operates in NORMAL conditions (Non-GREEN), and the Power Management function is disabled.

**Max. saving:** Maximum power savings. Inactivity period is 1 minute in each mode.



## BIOS

---

**Min. saving:** Minimum power savings. Inactivity period is 1 hour in each mode.

**User define:** Allows user to define PM Timers parameters to control power saving mode.

**PM controlled APM:** This option shows whether or not you want the Power Management to be controlled by the Advanced Power Management (APM). The default is Yes.

**Yes:** APM controls your PM

**No:** APM does not control your PM

**Video Off After:** Tells you what time frame that the video will be disabled under current power management settings.

**Doze:** Video powers off after time shown in doze mode timing.

**Suspend:** Video powers off after time shown in suspend mode timing.

**N/A:** Video power off not controlled by power management.

**Video Off Method:** This option allows you to select how the video will be disabled by the power management. The default is V/H Sync + Blank

**V/H Sync + Blank:** System turns off vertical and horizontal synchronization ports and writes blanks to the video buffer.

**DPMS:** Select this option if your monitor supports the Display Power Management Signaling (DPMS) standard of the Video Electronics Standards Association (VESA). Use the software supplied for your video subsystem to select video power management values.

**Blank Screen:** System only writes blanks to the video buffer.

**MODEM Use IRQ:** Name the interrupt request (IRQ) line assigned to the modem (if any) on your system. Activity of the selected IRQ always awakens the system. Default is IRQ 3.

N/A: No IRQ is used. 3: IRQ 3

4: IRQ 4 5: IRQ 5

7: IRQ 7 9: IRQ 9

10: IRQ 10 11: IRQ 11

**Doze Mode:** The “Doze” mode timer starts to count when no “PM events” have occurred.

**Suspend Mode:** This function works only when the Pentium II Processor is installed. The timer starts to count when “System Standby” mode timer is timed out and no “PM Events” are occurring. Valid range is from 1 minute up to 1 hour.

**HDD Power Down:** HDD Standby timer can be set from 1 to 15 minute(s).

**Soft-Off by PWRBTN:** Use this to select your soft-off function.

The default is Delay 4 sec.

**Instant Off:** Turns off instantly.

**Delay 4 Second:** Turns off after a 4 second delay. If momentary press of button, the system will go into Suspend Mode. Press again to take system out of Suspend Mode.

**PWRON After PW-Fail:** The system will stay off or power on after a power interrupt. The default is OFF.

**Fomer-Status:** Stay off or power on depend on system safe shut-down or power fail.

**ON:** System always power on after a power interrupt.

**OFF:** System always stay off after a power interrupt.

**VGA:** When set to *On* (default), any event occurring at a VGA port will awaken a system which has been powered down.

**LPT & COM:** When set to *On* (default), any event occurring at a COM(serial)/LPT (printer) port will awaken a system which has been powered down.

**HDD & FDD:** When set to *On* (default), any event occurring at a hard or floppy drive port will awaken a system which has been powered down.

**DMA/master:** When set to *On* (default), any event occurring to the DMA controller will awaken a system which has been powered down.

**RTC Alarm Resume:** When set to *Enable rta alarm resume*, you could set the date (of month) and timer (hh:mm:ss), any event occurring at will awaken a system which has been powered down.

# BIOS

**Modem Ring Resume:** When set to *Enabled*, any event occurring to the Modem Ring will awaken a system which has been powered down.

**Primary INTR:** When set to *On* (default), any event occurring at will awaken a system which has been powered down.

## 4-5 PNP/PCI Configuration

The PNP/PCI configuration program is for the user to modify the PCI/ISA IRQ signals when various PCI/ISA cards are inserted in the PCI or ISA slots.

**WARNING: Conflicting IRQ's may cause the system to not find certain devices.**

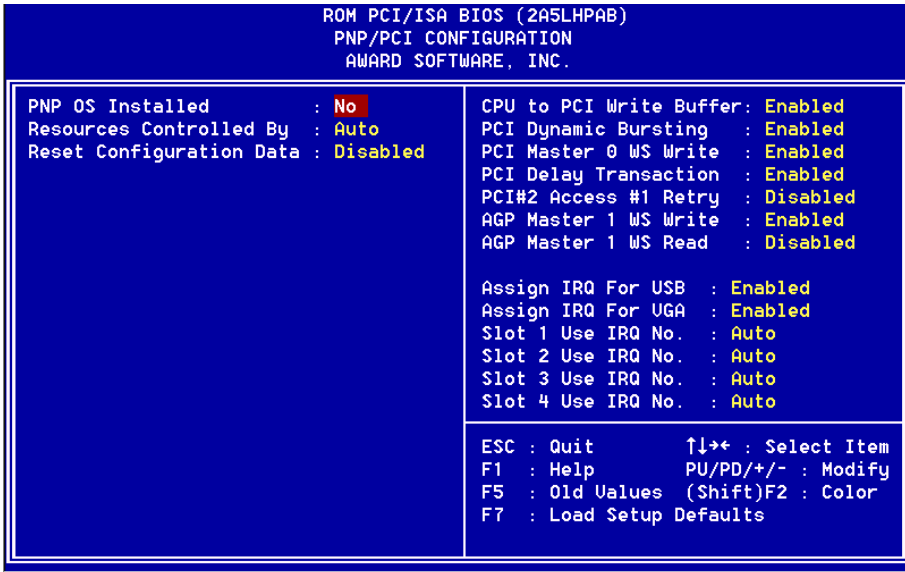


Figure 6: PCI Configuration Setup

**PNP OS Installed:** Do you have a PNP OS installed on your system. The default is No.

**Resources Controlled By:** Who controlled the system PNP/PCI resources. The default is Auto.

**Manual:** PNP Card's resources will be controlled manually. You can set which IRQ-X and DMA-X are assigned to PCI/ISA PNP or Legacy ISA Cards.

**Auto:** If your ISA card and PCI card are all PNP cards, BIOS will assign the interrupt resource automatically.

**Reset Configuration Data:** This setting allows you to clear ESCD data.

The default is Disabled

**Disabled:** Normal Setting.

**Enabled:** If you have plugged in some Legacy cards to the system and they were recorded into ESCD (Extended System Configuration Data), you can set this field to Enabled in order to clear ESCD.

**CPU to PCI Write Buffer:** When enabled, up to four D words of data can be written to the PCI bus without interrupting the CPU. When disabled, a write buffer is not used and the CPU read cycle will not be completed until the PCI bus signals that it is ready to receive the data.

The Choice: Enabled, Disabled.

**PCI Dynamic Bursting:** When Enabled, data transfers on the PCI bus, where possible, make use of the high-performance PCI burst protocol, in which greater amounts of data are transferred at a single command.

The Choice: Enabled, Disabled.

**PCI Master 0 WS Write:** When Enabled, writes to the PCI bus are command with zero wait states.

The Choice: Enabled, Disabled.

**PCI Delay Transaction:** The chipset has an embedded 32-bit posted write buffer to support delay transactions cycles. Select Enabled to support compliance with PCI specification version 2.1.

The Choice: Enabled, Disabled.

**PCI #2 Access #1 Retry:** This item allows you enabled/disable the PCI #2 Access #1 Retry.

The Choice: Enabled, Disabled.

**AGP Master 1 WS Write:** When Enabled, writes to the AGP bus are executed with one wait states.

**The Choice:** Enabled, Disabled.

---

## BIOS

---

**AGP Master 1 WS Read:** When Enabled, read to the AGP bus are executed with one wait states.

The Choice: Enabled, Disabled.

**Assign IRQ For USB/VGA:** This item allows BIOS to assign whether IRQ is with USB/VGA or not. If you have not connect the USB/VGA device. Can release the IRQ for other device. The default is Enabled.

**Enabled:** Provides IRQ for USB/VGA device.

**Disabled:** Release IRQ for other device.

**Slot 1 to Slot 4 Use IRQ No:** These settings allow the user to specify what IRQ will be assigned to PCI devices in the chosen slot. Options available: Auto, 3, 4, 5, 7, 9, 10, 11, 12, 14 & 15.

## 4-6 Integrated Peripherals

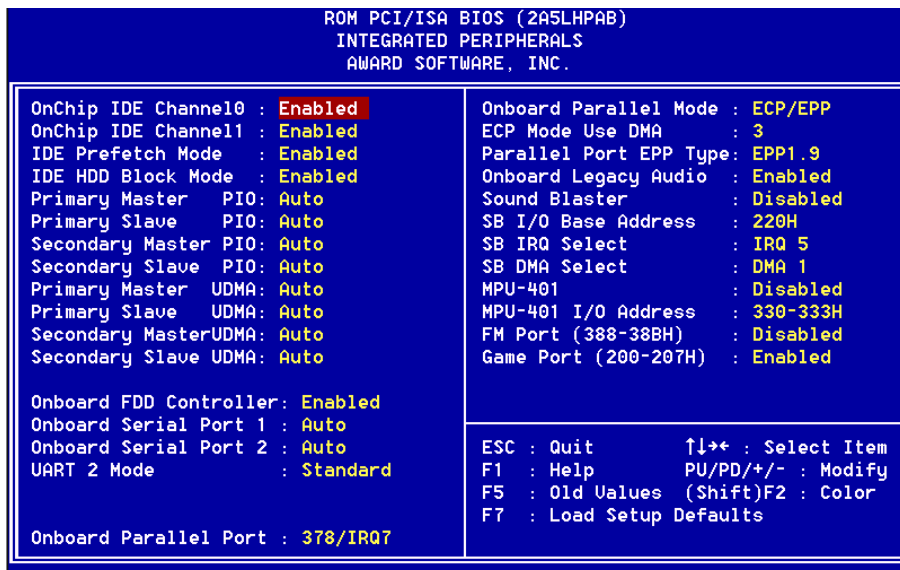


Figure 8: Integrated Peripherals

*Note:* If you do not use the Onboard IDE connector, then you will need to set Onboard Primary PCI IDE: Disabled and Onboard Secondary PCI IDE: Disabled

*Note:* The Onboard PCI IDE cable should be equal to or less than 18 inches (45 cm.).

**Onchip IDE Channel0/1:** The default value is Enabled.

**Enabled:** Enables Onboard IDE primary/secondary port.

**Disabled:** Disables Onboard IDE primary/secondary port.

**IDE Prefetch Mode:** Enable prefetching for IDE drive interfaces that support its faster drive accesses. If you are getting disk drive errors, change the setting to omit the drive interface where the errors occur. Depending on the configuration of your IDE subsystem, this field may not appear, and it does not appear when the Internal PCI/IDE field, above, is Disabled.

The Choice: Enabled, Disabled.

# BIOS

---

**IDE HDD Block Mode:** IDE Block Mode allows the controller to access blocks of sectors rather than a single sector at a time. The default is Enabled.

**Enabled:** Enabled IDE HDD Block Mode. Provides higher HDD transfer rates.

**Disabled:** Disable IDE HDD Block Mode.

**Primary Master/Slave PIO:** The default is Auto.

**Auto:** BIOS will automatically detect the Onboard Primary Master/Slave PCI IDE HDD Accessing mode.

**Mode 0~4:** Manually set the IDE Programmed interrupt mode.

**Secondary Master/Slave PIO:** The default is Auto.

**Auto:** BIOS will automatically detect the Onboard Secondary Master/Slave PCI IDE HDD Accessing mode.

**Mode 0~4:** Manually set the IDE Programmed interrupt mode.

**Primary Master/Slave UDMA:** This allows you to select the mode of operation for the hard drive. The default is Auto.

**Auto:** The computer will select the optimal setting.

**Disabled:** The hard drive will run in normal mode.

**Secondary Master/Slave UDMA:** This allows you to select the mode of operation for the hard drive. The default is Auto.

**Auto:** The computer will select the optimal setting.

**Disabled:** The hard drive will run in normal mode.

**Onboard FDD Controller:** This controls the state of the onboard floppy controller. The default value is Enabled.

**Enabled:** Enable the Onboard floppy drive interface controller.

**Disabled:** Disable the Onboard floppy drive interface controller.

**Onboard Serial Port 1/2:** This field allows the user to configure the 1st/2nd serial port. The default is Auto.

**AUTO:** Enable Onboard Serial port 1/2 and address is Auto adjusted

**COM1:** Enable Onboard Serial port 1/2 and address is 3F8H/IRQ4.

**COM2:** Enable Onboard Serial port 1/2 and address is 2F8H/IRQ3.

**COM3:** Enable Onboard Serial port 1/2 and address is 3E8H/IRQ4.

**COM4:** Enable Onboard Serial port 1/2 and address is 2E8H/IRQ3.

**Disabled:** Disable Onboard Serial port 1/2.

**UART 2 Mode:** This item allows you to determine which Infra Red (IR) function of onboard I/O chip.

The Choice: Standard, ASKIR, HPSIR.

**Onboard Parallel port:** This field allows the user to configure the LPT port.

The default is 378H / IRQ7.

**378H:** Enable Onboard LPT port and address is 378H and IRQ7.

**278H:** Enable Onboard LPT port and address is 278H and IRQ5.

**3BCH:** Enable Onboard LPT port and address is 3BCH and IRQ7.

**Disabled:** Disable Onboard LPT port.

**Onboard Parallel Mode:** This field allows the user to select the parallel port mode. The default is ECP+EPP.

**Normal:** Standard mode. IBM PC/AT Compatible bidirectional parallel port.

**EPP:** Enhanced Parallel Port mode.

**ECP:** Extended Capabilities Port mode.

**EPP+ECP:** ECP Mode & EPP Mode.

**ECP Mode USE DMA:** This field allows the user to select DMA1 or DMA3 for the ECP mode. The default is DMA3.

**DMA1:** This field selects the routing of DMA1 for the ECP mode.

**DMA3:** This field selects the routing of DMA3 for the ECP mode.

**Parallel Port EPP Type:** This item allows you to determine the IR transfer mode of onboard I/O chip.

The Choice: EPP1.9, EPP1.7.

**Onboard Legacy Audio:** Legacy Audio enabled/disabled.

**Sound Blaster:** Sound Blaster compatible device enabled/disabled.

**SB I/O Base Address:** Sound Blaster I/O resource selection.

**SB IRQ Select:** Legacy audio device IRQ selection.

**SB DMA Select:** Sound Blaster DMA channel selection.



# BIOS

---

**MPU-401:** MPU-401 function enabled/disabled.

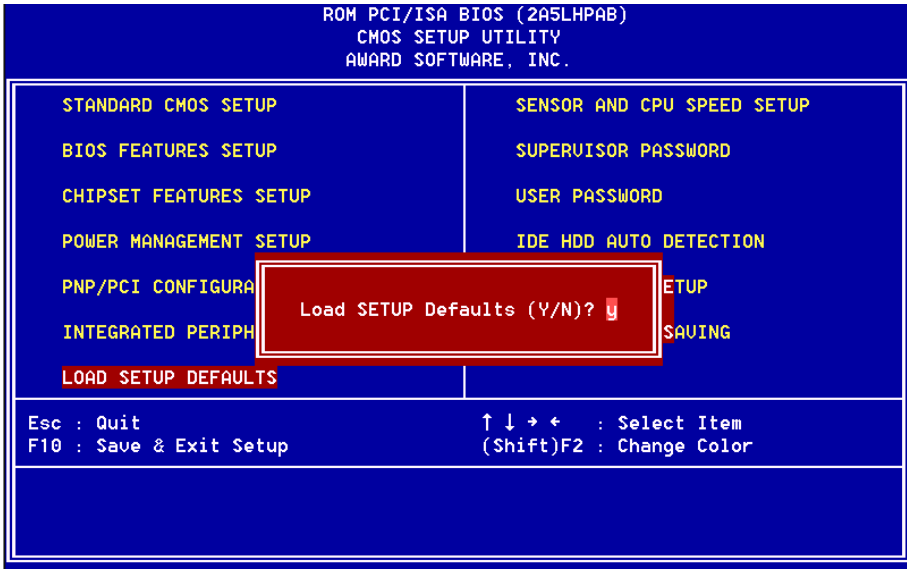
**MPU-401 I/O Address:** Built-in MPU-401 compatible MIDI I/O port selection.  
The choice: 300-303H, 310-313H, 320-323H, 330-333H (default).

**FM Port (388-38BH):** Frequency modulation port at I/O port 388-38BH  
enabled/disabled.

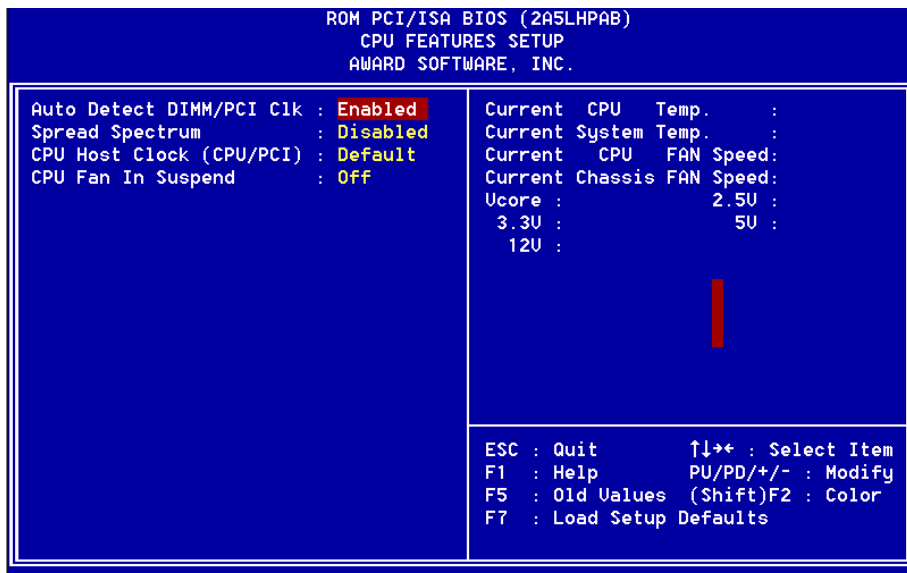
**Game Port (200-207H):** Built-in joystick port support disabled/enabled.

## 4-7 Load Setup Defaults

The “LOAD SETUP DEFAULTS” function loads the system default data directly from ROM and initializes the associated hardware properly. This function will be necessary only when the system CMOS data is corrupted.



## 4-8 SENSOR AND CPU SPEED SETUP



*Figure 9: Sensor And CPU Speed Setup*

**Auto Detect DIMM/PCI Clk:** When enabled the motherboard will automatically disable the clock source for a DIMM socket which does not have a module in it. Same applies for PCI slots. The default is Enabled.

**Spread Spectrum :** The default is Disabled.

**CPU Host Clock (CPU/PCI):** Allows the external clock to be modified depending upon what FSB has been selected. Should not be used to clock processor faster than it was designed for. The default is Default.

**CPUFAN Off In Suspend:** This option is used to set if the CPU fans will turn off during suspend mode. The default is Enabled.

**Enabled:** The system will turn off the CPU fans during suspend mode.

**Disabled:** The system will not turn off the CPU fan during suspend mode.

**Current System Temp:** This is the Current temperature of the system.

## **BIOS**

---

**Current CPU Temperature:** This is the current temperature of the CPU.

**Current CPU FAN Speed:** The current CPU fan speed in RPMs.

**Current Chassis FAN Speed:** The current chassis fan speed in RPMs.

**CPU(V):** The voltage level of the CPU(Vio/Vcore).

**+2.5V, +3.3V, +5V, +12V:** The voltage level of the switch power supply.

---

## 4-9 Change Supervisor or User Password

---

To change the password, choose the “SUPERVISOR PASSWORD or USER PASSWORD” option from the CMOS SETUP UTILITY menu and press [Enter].

***NOTE: Either “Setup” or “System” must be selected in the “Security Option” of the BIOS FEATURES SETUP menu.***

1. If CMOS is corrupted or the option was not used, a default password stored in the ROM will be used. The screen will display the following message:

Enter Password:

Press the [Enter] key to continue after the proper password is given.

2. If the CMOS is corrupted or the option was used earlier and the user wishes to change the default password, the SETUP UTILITY will display a message and ask for a confirmation.

Confirm Password:

3. After pressing the [Enter] key (ROM password if the option was not used) or current password (user-defined password), the user can change the password and store new one in CMOS RAM. A maximum of 8 characters can be entered.

## 4-10 IDE HDD Auto Detection

The “IDE HDD auto detection” utility is a very useful tool, especially when you do not know which kind of hard disk type you are using. You can use this utility to detect the correct disk type installed in the system automatically. But now you can set HARD DISK TYPE to Auto in the STANDARD CMOS SETUP. You don’t need the “IDE HDD AUTO DETECTION” utility. The BIOS will Auto-detect the hard disk size and model on display during POST.

ROMPCI/ISABIOS(2A5LHPAB)  
CMOSSETUPUTILITY  
AWARDSOFTWARE, INC.

HARD DISKS	TYPE	SIZE	CYLS	HEADS	PRECOMP	LANDZONE	SECTORS	MODE
Primary Master :								
Select Secondary Slave Option (N=Skip) : N								
OPTIONS	SIZE	CYLS	HEAD	PRECOMP	LANDZ	SECTORMODE		
2 (Y)	4310	524	255	0	14847	63 LBA		
1	4310	14848	9	65535	14847	63 NORMAL		
3	4310	928	144	65535	14847	63 LARGE		
Note: Some OSes (like SCO-UNIX) must use NORMAL for installation								
ESC : Skip								

Figure 10: IDE HDD Auto Detection

### **NOTE: HDD Modes**

The Award BIOS supports 3 HDD modes : NORMAL, LBA & LARGE NORMAL mode

Generic access mode in which neither the BIOS nor the IDE controller will make any transformations during accessing.

The maximum number of cylinders, head & sectors for NORMAL mode are 1024, 16 & 63.

no. Cylinder (1024)  
x no. Head (16)  
x no. Sector (63)  
x no. per sector (512)  
528 Megabytes

---

If user set his HDD to NORMAL mode, the maximum accessible HDD size will be 528 Megabytes even though its physical size may be greater than that!

**LBA (Logical Block Addressing) mode:** A new HDD accessing method to overcome the 528 Megabyte bottleneck. The number of cylinders, heads & sectors shown in setup may not be the number physically contained in the HDD. During HDD accessing, the IDE controller will transform the logical address described by sector, head & cylinder into its own physical address inside the HDD. The maximum HDD size supported by LBA mode is 8.4 GigaBytes which is obtained by the following formula:

$$\begin{array}{r} \text{no. Cylinder} \\ \times \text{no. Head} \\ \times \text{no. Sector} \\ \times \text{bytes per sector} \end{array} \quad \begin{array}{r} (1024) \\ (255) \\ (63) \\ (512) \end{array} \\ \hline 8.4 \text{ GigaBytes}$$

**LARGE mode:** Extended HDD access mode supported by Award Software.

Some IDE HDDs contain more than 1024 cylinder without LBA support (in some cases, user do not want LBA). The Award BIOS provides another alternative to support these kinds of LARGE mode.

<u>CYLS</u>	<u>HEADS</u>	<u>SECTOR</u>	<u>MODE</u>
1120	16	59	NORMAL
560	32	59	LARGE

BIOS tricks DOS (or other OS) that the number of cylinders is less than 1024 by dividing it by 2. At the same time, the number of heads is multiplied by 2. A reverse transformation process will be made inside

INT 12h in order to access the right HDD address!

**Maximum HDD size:**

$$\begin{array}{r} \text{no. Cylinder} \\ \times \text{no. Head} \\ \times \text{no. Sector} \\ \times \text{bytes per sector} \end{array} \quad \begin{array}{r} (1024) \\ (32) \\ (63) \\ (512) \end{array} \\ \hline 1 \text{ GigaByte}$$

*Note: To support LBA or LARGE mode of HDDs, there must be some software involved. All the software is located in the Award HDD Service Routine (INT 13h). It may fail to access a HDD with LBA (LARGE) mode selected if you are running under an Operating System which replaces the whole INT 13h.*

UNIX operating systems do not support either LBA or LARGE and must utilize the Standard mode. UNIX can support drives larger than 528MB.

### 4-11 Save & Exit Setup

The “SAVE & EXIT SETUP” option will bring you back to the boot up procedure with all the changes you just recorded in the CMOS RAM.

### 4-12 Exit Without Saving

The “EXIT WITHOUT SAVING” option will bring you back to normal boot up procedure without saving any data into CMOS RAM.

**All old data in the CMOS will not be destroyed.**

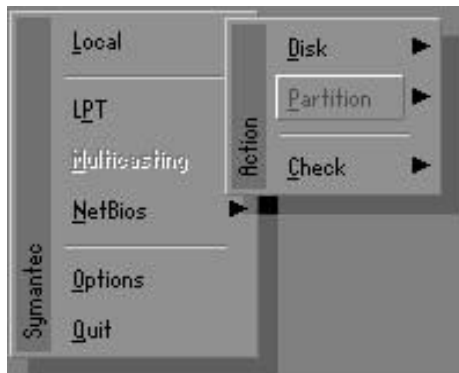
A-1 GHOST 5.1/6.03 Quick User's Guide

Installation is very easy. You only need to copy the **Ghost5** folder or **Ghost.exe** to your hard disk.

The current market version is for single **Client**, so the LPT and NetBios portions will not be explained further.

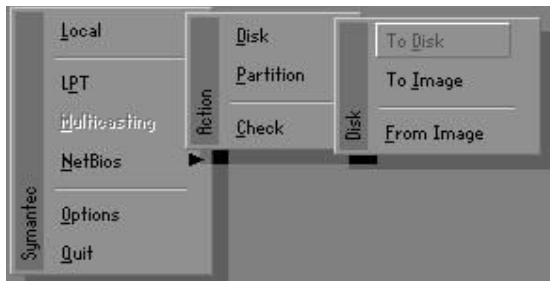
**Description of Menus**

**Ghost** clones and backs up **Disk** and **Partition**.



In which **Disk** indicates hard disk options  
**Partition** indicates partition options  
**Check** indicates check options

**Disk**





# Appendix

---

## There are 3 hard disk functions:

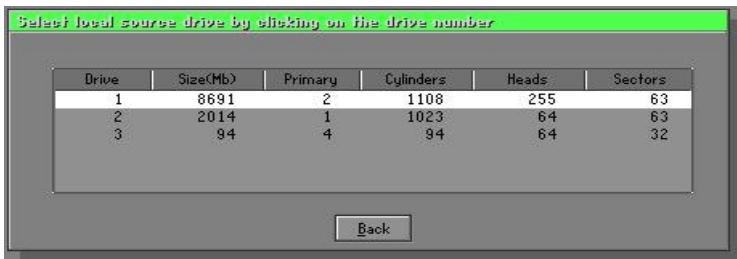
1. Disk To Disk (disk cloning)
2. Disk To Image (disk backup)
3. Disk From Image (restore backup)

## Important!

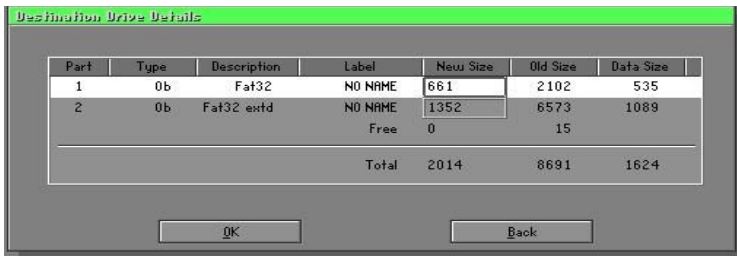
1. To use this function, the system must have at least 2 disks. Press the **Tab** key to move the cursor.
2. When restoring to a destination disk, all data in that disk will be completely destroyed.

## Disk To Disk (Disk Cloning)

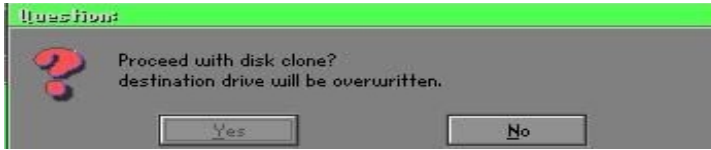
1. Select the location of the **Source** drive.
2. Select the location of the **Destination** drive.



3. When cloning a disk or restoring the backup, set the required partition size as shown in the following figure.

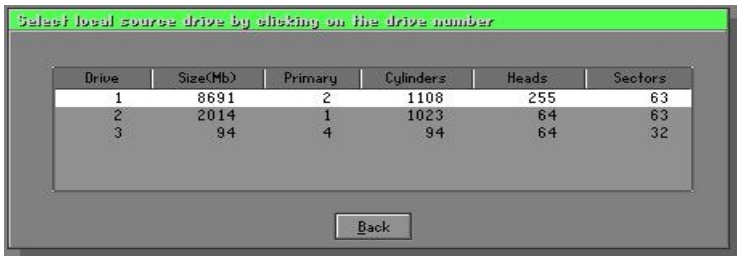


- Click OK to display the following confirmation screen. Select **Yes** to start.

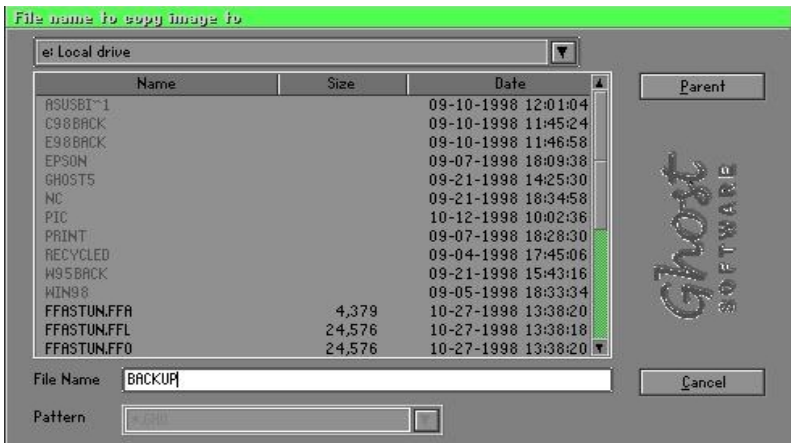


## Disk To Image (Disk Backup)

- Select the location of the Source drive.



- Select the location for storing the backup file.



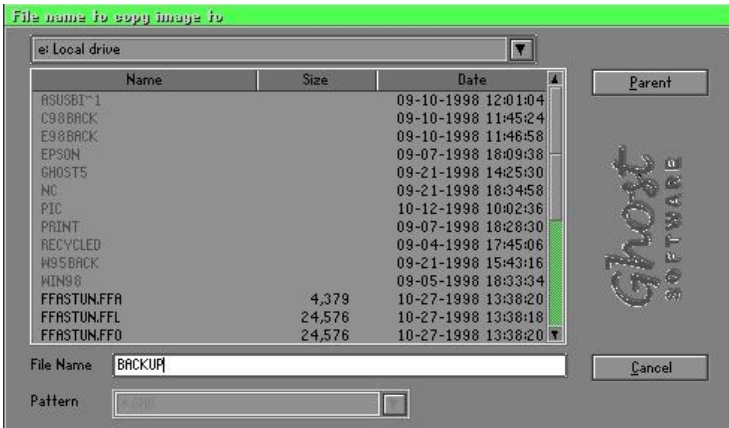
# Appendix

- Click **OK** to display the following confirmation screen. Select **Yes** to start.

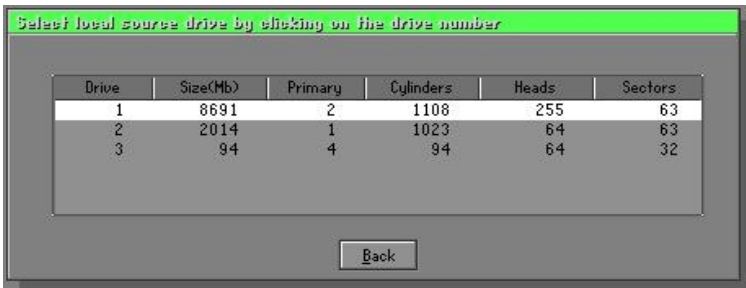


## Disk From Image (Restore Backup)

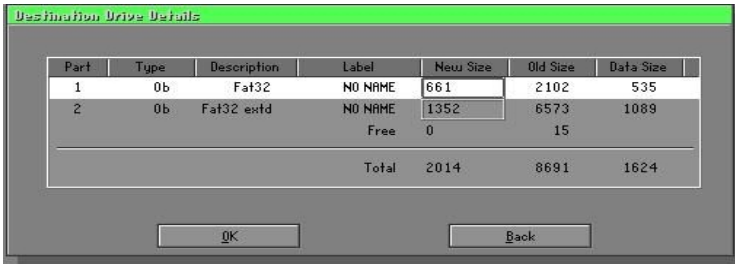
- Select the Restore file.



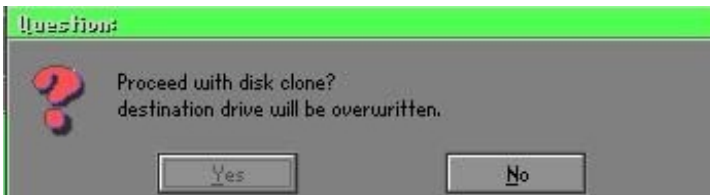
- Select the **Destination** drive of the disk to be restored.



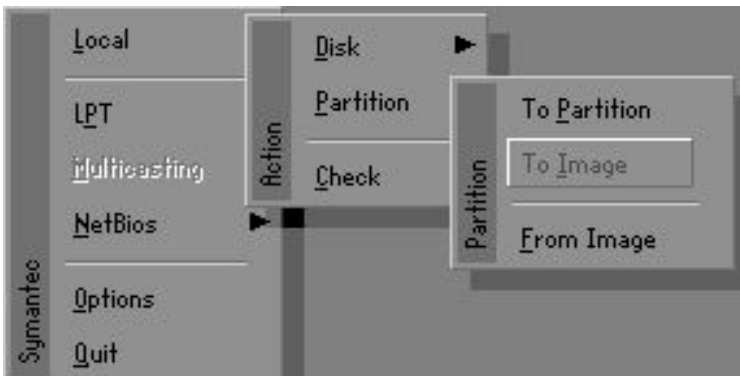
- When restoring disk backup, set the required partition size as shown in the following figure.



- Click **OK** to display the following confirmation screen. Select **Yes** to start.



## Partition



# Appendix

---

There are 3 partition functions:

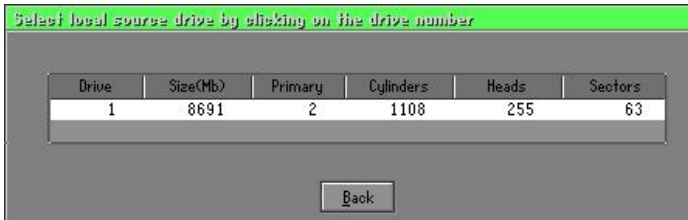
1. **Partition To Partition** (partition cloning)
2. **Partition To Image** (partition backup)
3. **Partition From Image** (restore partition)

## Partition To Partition (Partition Cloning)

The basic unit for partition cloning is a partition. Refer to disk cloning for the operation method.

## Partition To Image (Partition Backup)

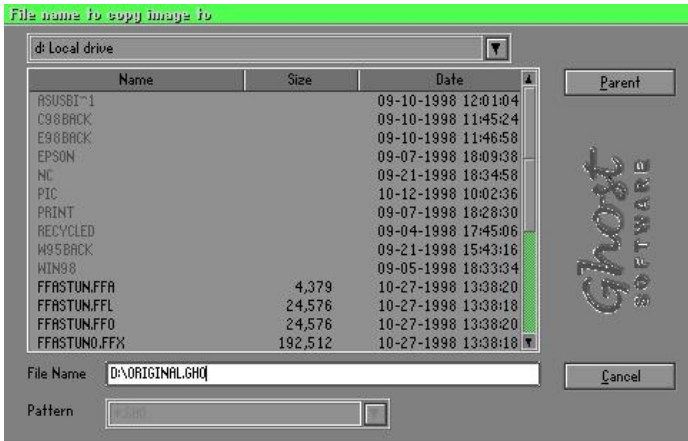
1. Select the disk to be backed up.



2. Select the first partition to be backed up. This is usually where the operating system and programs are stored.



3. Select the path and file name for storing the backup file.

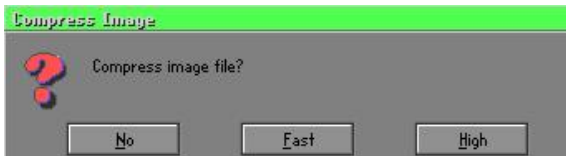


4. Is the file compressed? There are 3 options:

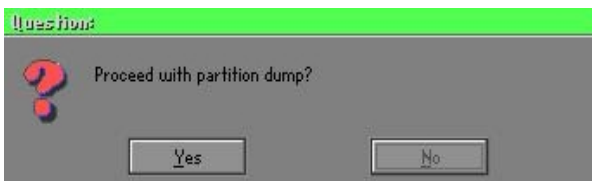
(1) No: do not compress data during backup

(2) Fast: Small volume compression

(3) High: high ratio compression. File can be compressed to its minimum, but this requires longer execution time.



5. During confirmation, select Yes to start performing backup.

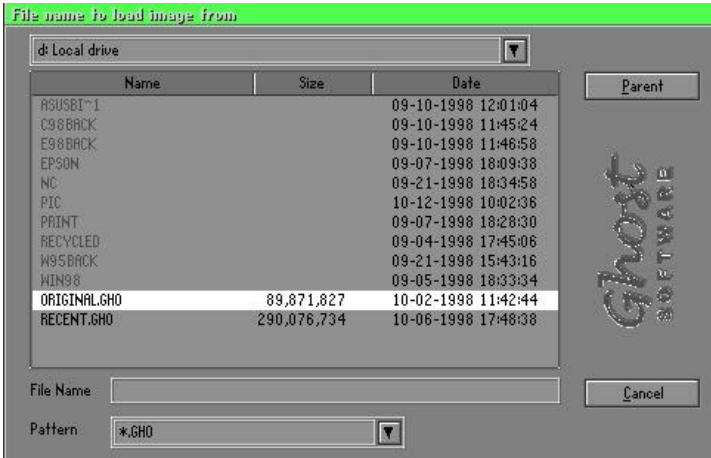


# Appendix

---

## Partition From Image (Restore Partition)

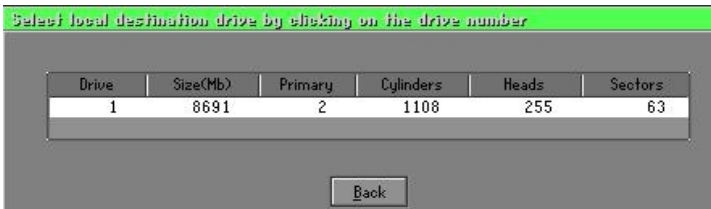
1. Select the backup file to be restored.



2. Select the source partition.



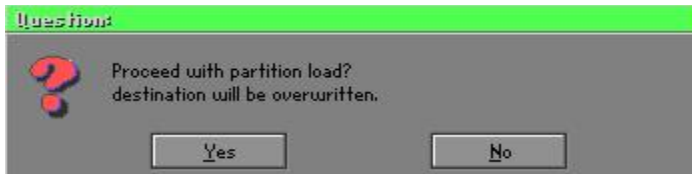
3. Select the disk to be restored.



4. Select the partition to be restored.



5. Select Yes to start restoring.



## Check

This function checks the hard disk or backup file for backup or restoration error due to FAT or track error.



### How to Reinstall Windows in 2 Minutes

**This chapter teaches you how to set your computer properly and, if necessary, reinstall Windows in 2 minutes. Ghost can use different methods to complete this task. The following two sections explain the creation of the emergency Recover Floppy and Recover CD:**

#### Emergency Recover Floppy

Divide a hard disk into two partitions. The first partition is for storing the operating system and application programs. The second partition is for backing up the operating system and data. The size of the partition can be set according to the backup requirements. For example, the **Windows** operating system needs 200MB of hard disk space, while the complete **Office** installation requires 360MB. The remaining space can be used to store other data.

After installing **Windows**, use **Ghost** to create a backup of the source system and store the file (Image file) in drive D. The file is named as **Original.gho**. Then, create a recover floppy disk containing:

- ◆ Bootable files (Command.com, Io.sys, and MSDOS.SYS )
- ◆ Config.sys (configuration setup file)
- ◆ Autoexec.bat (auto-execution batch file)
- ◆ Ghost.exe (Ghost execution file)

There are two ways to set the content of the recover floppy for restoration:

- (1) To load **Windows** automatically after booting, set the **Autoexec.bat** command as:

```
Ghost.exe clone, mode=pload, src=d:\original.gho:2,dst=1:1 -fx -sure -rb
```

Description: Runs the restore function automatically using the Image File. After execution, it exits Ghost and boots the system automatically.

Refer to the [Introducing Ghosts Functions].

- (2) After booting, the screen displays the Menu. Select Backup or Restore: Since the user may install other applications in the future, he/she may design **Autoexec.bat** as a Menu to back up or restore the user-defined Image file as follows:

### Backup

Back up Windows and application programs as a file (Recent.gho). Command is:

```
Ghost -clone,mode=pdump,src=1:1,dst=d:\Recent.gho -fx -sure -rb
```

### Restore

Restore types include [**General Windows**] and [**Windows and Application Programs**]. If you select [**General Windows**], the system is restored to the general **Windows** operation condition. The command is:

```
Ghost.exe -clone,mode=pload,src=d:\Original.gho,dst=1:1 -fx -sure -rb
```

If you select [**Windows and Application Programs**], the latest backup file (Recent.gho) is restored, skipping the installation and setup of application programs.

For description of relevant parameters, refer to [**Introducing Ghosts Functions**].

For more information about menu design, refer to Config.sys and Autoexec.bat under /Menu in the CD. You can also create a backup CD containing Ghost.exe and these two files.

### Recover CD

In recent years, well-known computer manufacturers (such as IBM, Acer, Compaq, etc.) bundle Recover CDs with their computers to reduce the cost resulting from servicing, while at the same time increasing their market competitiveness.

The following is a simple guide to how to create a recover CD:

1. For extremely easy creation of the recover floppy disk, use the copy program for example “Easy CD Creator “ (Note 2). First, create a recover floppy disk containing:

Bootable files (Command.com and Io.sys and MSDOS.SYS)

Config.sys (Configuration setup file)

Autoexec.bat (Auto-execution batch file)

Mscdex.exe (CD-Rom execution file)

Ghost.exe (Ghost execution file)

Oakcdrom.sys (ATAPI CD-ROM compatible driver)

The content of Config.sys is:

```
DEVICE=Oakcdrom.sys /d:idecd001
```

The content of Autoexec.bat includes:

```
MSCDEX.EXE /D:IDECD001 /L:Z
```

```
Ghost.exe clone,mode=load,src=z:\original.gho,dst=1 -sure -rb
```

2. Write the backup image file (original.gho) of the entire hard disk or partition into the recover CD. Use the Recover CD to boot up the system and restore the backup files automatically.

For description of relevant parameters, refer to **[Introducing Ghosts Functions]**.

Note: For more details regarding the creation program and method for creating the recover CD, please refer to the legal software and relevant operation manual.

## Ghost Command Line Switches Reference

Ghost may be run in interactive or in batch mode. Batch mode is useful for automating installations for backups using Ghost. Most of the Ghost switches are used to assist with batch mode operation. To list switches from Ghost, type `ghost.exe -h`.

### **-clone**

The full syntax for this switch is:

```
clone,MODE={copy|load|dump|pcopy|pload|pdump},SRC={drive|file|drive:partition},DST={drive|file|drive:partition},SIZE {F|L|n={nnnnM|nnP|F|V}}
```

Clone using arguments. This is the most useful of the batch switches and has a series of arguments that define:

- a) MODE** This defines the type of clone command to be used:
- |              |                             |
|--------------|-----------------------------|
| <b>COPY</b>  | disk to disk copy           |
| <b>LOAD</b>  | file to disk load           |
| <b>DUMP</b>  | disk to file dump           |
| <b>PCOPY</b> | partition to partition copy |
| <b>PLOAD</b> | file to partition load      |
| <b>PDUMP</b> | partition to file dump      |
- b) SRC** This defines the source location for the operation:
- | <b>Mode</b>   | <b>Meaning:</b>   |
|---------------|---|
| <b>COPY/</b>  |   |
| <b>DUMP</b>   | Source drive (e.g, 1 for drive one)   |
| <b>LOAD</b>   | Disk image filename or device (e.g, g:\Images\system2.img)  |
| <b>PCOPY/</b> |   |
| <b>PDUMP</b>  | Source partition e.g, 1:2 indicates the second partition on drive one.  |
| <b>PLOAD</b>  | Partition image filename or device and partition number. Example: g:\images\disk1.img:2 indicates the second partition in the Image file. |

## Appendix

---

- | c) <b>DST</b> | This defines the destination location for the operation:                      |
|---------------|---|
| <b>Mode</b>   | <b>Meaning</b>  |
| <b>COPY/</b>  |   |
| <b>LOAD</b>   | Destination drive (e.g, 2 for drive two)                                      |
| <b>DUMP</b>   | Disk image filename or device,(e.g, g:\images\system2.img)                    |
| <b>PCOPY/</b> |   |
| <b>PLOAD</b>  | Destination partition,(e.g, 2:2 indicates the second partition on drive two). |
| <b>PDUMP</b>  | Partition image filename (e.g, g:\images\part1.img).                          |
- c) **SZEy** Used to set the size of the destination partitions for either a disk load or disk copy operation.

### Available y Options:

- F Resizes the first partition to maximum size allowed based on file system t type.
- L Resizes the last partition to maximum size allowed based on file system type.
- n=xxxxM - indicates that the n?h destination partition is to have a size of xxxx Mb. (e.g, SZE2=800M indicates partition two is to have 800 mb.) n=mmP - indicates that the n?h destination partition is to have a size of mm percent of the target disk.
- n=F - indicates that the n?h destination partition is to remain fixed in size.
- n=V - Indicates that the partition will be resized according to the following rules:
- Rule 1** - If the destination disk is larger than the original source disk, then the partition(s) will be expanded to have the maximum amount of space subject to the free space available and the partition type (e.g, FAT16 partitions will have a maximum size of 2048Mb.)
- Rule 2** - If the destination disk is smaller than the original source disk, (but still large enough to accommodate the data from the source disk), the free space left over after the

data space has been satisfied will be distributed between the destination partitions in proportion to the data usage in the source partitions. Some examples follow that will help illustrate:

- fx flag Exit. Normally when Ghost has finished copying a new system to a disk, it prompts the user to reboot with a press Ctrl-Alt-Del to reboot window. However, if Ghost is being run as part of a batch file it is sometimes useful to have it just exist back to the DOS prompt after completion so that further batch commands may be processed. -fx enables this. See -rb for another option on completing a clone.
- ia Image All. The Image All switch forces Ghost to do a sector by sector copy of all partitions. When copying a partition from a disk to an image file or to another disk, Ghost examines the source partition and decides whether to copy just the files and directory structure, or to do an image (sector by sector) copy. If it understands the internal format of the partition it defaults to copying the files and directory structure. Generally this is the best option, but occasionally if a disk has been set up with special hidden security files that are in specific positions on the partition, the only way to reproduce them accurately on the target partition is via an image or sector-by-sector copy.
- span enables spanning across volumes.
- split=x splits image file into 'x' Mb? Mb spans. Use this to create a 'forced' size volume set. For example, if you would like to force smaller image files from a 1024 Megabyte drive, you could specify 200 megabyte segments. For example, ghost.exe -split=200 will divide the image into 200 Megabyte segments.
- sure use the -sure switch in conjunction with -clone to avoid being prompted with the final 'Proceed with disk clone destination drive will be overwritten?' question. This command is useful in batch mode.

## Appendix

---

### Example 1:

To copy drive one to drive two on a PC, without final prompt if OK to proceed.

```
ghost.exe -clone,mode=copy,src=1,dst=2 -sure
```

### Example 2:

To connect via NetBIOS to another PC running Ghost in slave mode, and dump a disk image of local drive two to the remote file c:\drive2.gho

```
ghost.exe -clone,mode=dump,src=2,dst=C:\drive2.gho -nbm
```

Note: The slave Ghost can be started with ghost -nbs

### Example 3:

To copy drive one, second partition on a PC to drive two, first partition the same PC, without final prompt

```
ghost.exe -clone,mode=pcopy,src=1:2,dst=2:1 -sure
```

### Example 4:

To dump the second partition of drive one to an image file on a mapped drive g:

```
ghost.exe -clone,mode=pdump,src=1:2,dst=g:\part2.gho
```

### Example 5:

To load partition 2 from a two-partition image file on a mapped drive g: onto the second partition of the local disk

```
ghost -clone,mode=pload,src=g:\part2.gho:2,dst=1:2
```

### Example 6:

To load drive 2 from an image file and resize the destination partitions into a 20:40 allocation

```
ghost.exe -clone,mode=load,src=g:\2prtdisk.gho,dst=2,size1=60P,  
size2=40P
```

## B-1 Update Your system BIOS

Download the xxxxx.EXE file corresponding to your model form the our website to an empty directory on your hard disk or floppy. Run the downloaded xxxxx.EXE file and it will self extract. Copy these extracted files to a bootable DOS floppy disk.

Note: The DOS floppy disk should contain NO device drivers or other programs.

1. Type "A:\AWDFLASH and press <Enter> Key.
2. You will see the following setup on screen.
3. Please key in the xxxxx.bin BIOS file name.

```
FLASH MEMORY WRITER V7.88
(C)Award Software 2000 All Rights Reserved

For xxxx-W83627-6A69LPA9C-0  DATE: 05/11/2000
Flash Type -
File Name to Program : _____

Error Message:
```

4. If you want to save the previous BIOS data to the diskette, please key in [Y], otherwise please key in [N].

```
FLASH MEMORY WRITER V7.88
(C)Award Software 2000 All Rights Reserved

For xxxx-W83627-6A69LPA9C-0  DATE: 05/11/2000
Flash Type - xxxxx E82802AB /3.3V
File Name to Program : xxxxx.bin

Error Message: Do You Want To Save Bios (Y/N)
```



---

## User Notice

No part of this product, including the product and software may be reproduced, transmitted, transcribed, stored in a retrieval system, or translated into any language in any form without the express written permission of EPoX Computer Company (hereinafter referred to as EPoX) except for documentation kept by the purchaser for backup purposes.

We provide this manual “as is” without warranty of any kind, either expressed or implied, including but not limited to the implied warranties or conditions of merchantability or fitness for a particular purpose. In no event shall EPoX be liable for any loss of profits, loss of business, loss of use or data, interruption of business or for indirect, special incidental, or consequential damages of any kind, even if EPoX has been advised of the possibility of such damages arising from any defect or error in the manual or product. EPoX may revise this manual from time to time without notice. For updated BIOS, drivers, or product release information you may visit our websites at <http://www.epox.com> or <http://www.epox.com.tw>.

Products mentioned in this manual are mentioned for identification purposes only. Product names appearing in this manual may or may not be registered trademarks or copyrights of their respective companies. **The product name and revision number are both printed on the mainboard itself.**

## Handling Procedures

Static electricity can severely damage your equipment. Handle the EP-MVP4F/C and any other device in your system with extreme care and avoid unnecessary contact with system components on the mainboard. Always work on an antistatic surface to avoid possible damage to the mainboard from static discharge. Always have the power supply unplugged and powered off when inserting and removing devices within the computer chassis. EPoX assumes no responsibility for any damage to the EP-MVP4F/C mainboard that results from failure to follow instruction or failure to observe safety precautions.



### CAUTION



**The EP-MVP4F/C mainboard is subject to damage by static electricity. Always observe the handling procedures.**

---

---

## **Technical Support Services**

If you need additional information, help during installation or normal use of this product, please contact your retailer. Your retailer will have the most current information about your configuration. If your retailer cannot help, you may visit our online technical support website and/or contact our support technicians at the locations listed below.

Record your serial number before installing your EP-MVP4F/C mainboard. (The serial number is located near the PCI slots at the edge of the board.)

**EP-MVP4F/C serial number:** \_\_\_\_\_

## **Contacting Technical Support**

EPoX technical support is working hard to answer all of your questions online. From our website you can find answers to many common questions, drivers, BIOS updates, tech notes, and important technical bulletins. If you are still unable to locate the solution you are seeking, you always have the option to contact our support technicians directly.

### **North American website (English language)**

<http://www.epox.com>

[sales@epox.com](mailto:sales@epox.com)

[support@epox.com](mailto:support@epox.com)

### **European website (Multi-language)**

<http://www.epox.nl>

[sales@epox.nl](mailto:sales@epox.nl)

[support@epox.nl](mailto:support@epox.nl)

[info@elito-epox.com](mailto:info@elito-epox.com)

### **Taiwan website (Chinese language)**

<http://www.epox.com.tw>

[sales@epox.com.tw](mailto:sales@epox.com.tw)

[support@epox.com.tw](mailto:support@epox.com.tw)

*Thank you for using EPoX mainboards!*

*Copyright 2001 EPoX Computer Company. All rights reserved.*

---

## Free Manuals Download Website

<http://myh66.com>

<http://usermanuals.us>

<http://www.somanuals.com>

<http://www.4manuals.cc>

<http://www.manual-lib.com>

<http://www.404manual.com>

<http://www.luxmanual.com>

<http://aubethermostatmanual.com>

Golf course search by state

<http://golfingnear.com>

Email search by domain

<http://emailbydomain.com>

Auto manuals search

<http://auto.somanuals.com>

TV manuals search

<http://tv.somanuals.com>