

Thank you for purchasing the Compaq 27 MHz Wireless Keyboard and Mouse. The wireless keyboard lets you move it freely from your computer within 2 meters range and the keyboard's 19 hot keys are convenient for one touch access to your favorite Internet, e-mail, and programs such as *Word*, *Excel*, and *Power Point*. The wireless mouse's buttons can be programmed to control movements frequently used in *Windows*, for example, double clicks, zoom in and out, shift key, scroll, copy, paste, enter, page up and down, and so on.

Your wireless mouse and keyboard system is fully compatible with *IBM/AT* and *PS/2*, *Windows 95 (PS/2 only)*, *Windows, 98, 2000, ME, XP*.



Wireless Keyboard



Wireless Mouse



Receiver

! IMPORTANT !

If an icon appears at the end of a paragraph, go to the box on that page with the corresponding icon for pertinent information.

! — Important — Note

CONTENTS

System Requirements	3
A Quick Look	4
Mouse	4
Keyboard Hotkeys	4
Media Keys	4
Internet Keys:	5
Others	5
LED Indicators on the Receiver	6
Hardware Installation	7
Connecting the Receiver to Your Computer	7
Installing Batteries	7
In the Keyboard	8
In the Mouse	8
Setting Up The Keyboard	9
Using the Keyboard's Palm Rest and Elevation Tabs	9
Wireless Keyboard, Mouse, and Receiver	9
Setting the ID Channel	9
Software Installation	10
Wireless Mouse And Keyboard Setting Menu	10
Customizing the Mouse Settings	11
Mouse Button Assignments	11
Application Switch/Document Switch	13
EasyJump for Windows	14
Zoom function for Office and IE Applications	15
Setting Wireless Mouse Options for Internet	15
Setting The Keyboard's Hotkeys	15
Setting the Media Key	16
Setting the Play/Pause Key	16
Setting the Search Key	17
Setting the Web/Home WWW Key	17
Setting the Mail Key	18
Setting the "My Computer" Key	18
Setting the Calculator Key	19
Setting the Sleep Key	19
Setting Options for Displaying the HotKey Icon	20
Setting the Wireless Function	20
Troubleshooting	21
FCC Declaration of Conformity	22
The FCC Wants You to Know	22
Care	23
Cleaning the Wireless Mouse	23
Service and Repair	23
Environment Requirements	24

SYSTEM REQUIREMENTS

- IBM™-Compatible PC, with 80486 processor or above
- 8 MB RAM minimum (16 MB recommended)
- 10 MB hard-disk space
- CD-ROM drive
- PS/2 keyboard port. (If your system has an AT computer (IBM compatible) keyboard port, you will need one more AT socket to PS/2 socket adapter, available at your local RadioShack store.)
- PS/2 mouse port.
- Windows 95 (PS/2 only) Microsoft Windows 98/Me, or Windows NT 4.0 (with Service Pack 3 or later version), or Windows 2000/XP installed.
- Microsoft Windows Media Player 6.4 and CD Player installed or Windows Media Player 7.0 installed.

Your wireless keyboard and mouse system's features include:

256 Channel ID Number Selections — lets you select a different channel ID number to prevent any possible radio frequency interruption.

One-Touch Popular Multimedia Function Keys — allow one touch operation of Mute, Volume up, Volume down, Previous-track, Next-track, Stop, Play and Pause functions.

One-Touch Applications Keys — allow one touch access to Internet functions such as *My Favorite*, *Search*, *E-mail*, *WWW*, *Windows My Computer desktop*, *Windows' calculator*.

Four LED Mode Indicators — indicate mouse operating status, battery power status, Number Lock, Caps Lock, and Scroll Lock function status.

Foldable Keyboard Palm Rest — lets you rest your palms comfortably for extended use of the keyboard.

Ergonomic Mouse Design — lets you hold the mouse comfortably.

Optical Sensing Technology — senses mouse movement precisely and smoothly, with no moving parts to replace.

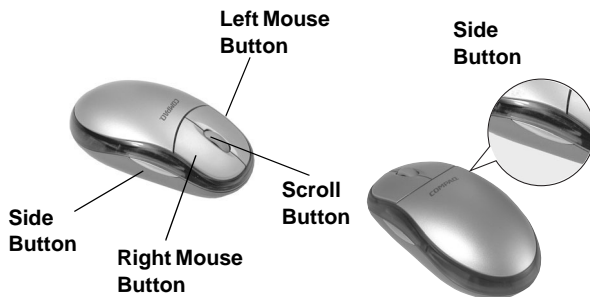
USB to PS/2 Adapter — lets you use your mouse with computer either with PS/2 or USB connector.

Mouse Scroll Wheel — lets you scroll and select quickly and easily, helping you work with long documents.

Supplied Driver CD — provides various customized functions for operation with the Internet and Windows.

A QUICK LOOK

MOUSE



Left Button: The left button is a default click button. You do not need to set this button.


Right Button — You can assign this for frequently used keyboard buttons and mouse functions in addition to features like Easy-Jump, Auto-Panning, Zoom, and so on.

Scroll Button — You can assign this button for frequently used keyboard buttons and mouse functions in addition to features like Easy-Jump, Auto-Panning, Zoom, and so on.


Side Button — You can assign certain functions in the Mouse Properties menu to the left or right side button with the roller button.


KEYBOARD HOTKEYS


Media Keys


 — starts the media player that you select.


 — moves audio or video CD to previous track.

 — moves an audio or video CD to the next track.


 — Play and pause an audio or video CD.


 — stops playing an audio or video CD.


Volume + or -  — increases or decreases volume.

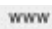
Mute  — mutes the sound of an audio or video CD being played.


Internet Keys

My Favorites  — displays your Favorites or Bookmarks list for the Internet.


Search  — goes to your Internet search service.


E-mail  — access an E-mail application such as *Outlook Express*.

WWW  — access the internet browser application.

Back  — returns to the previous web page.


Forward  — moves to the next web page.

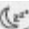
Stop  — stops loading or refreshing a new web page.

Refresh  — updates the content on a web page.

Others

My Computer  — displays <My Computer>.

Calculator  — access the Windows' Calculator.

Sleep  — turn system into sleep mode.

LED Indicators on the Receiver

There are four LED indicators in the receiver.



1. The top LED lights either red or green as follows:

- lights red when the mouse battery power weakens and turns off when fresh batteries are installed.

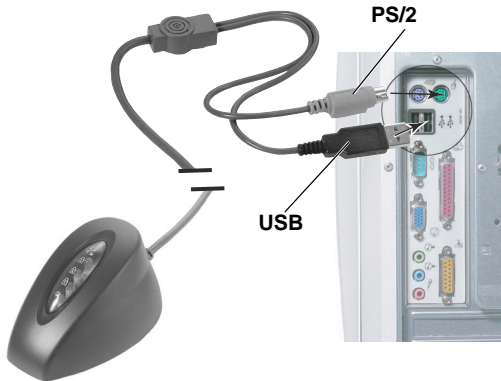
- lights red when the keyboard battery power is low. The LED only flashes when a key is pressed on the keyboard while the batteries are low.
 - flashes green slowly when the receiver is preparing to operate.
 - flashes green rapidly when the mouse moves and goes off when the mouse stops.
 - flashes green slowly when you hit a key on the keyboard and goes off when you stop.
2. The second green LED lights when **Scroll Lock** is set to on and turns off when **Scroll Lock** is released.
 3. The third green LED lights when **Caps Lock** is set to on and turns off when **Caps Lock** is released.
 4. The last green LED lights when **Num Lock** is set to on and turns off when **Num Lock** is released.

HARDWARE INSTALLATION

CONNECTING THE RECEIVER TO YOUR COMPUTER

The connectors of the RF (Radio Frequency) receiver meet the PC 99 Spec. If you have a computer with PC 99 specification, simply plug the purple connector marked with  to the same color PS/2 port, or connect the supplied USB to PS/2 adapter to the USB connector and connect it to the mouse's USB port. Refer to your computer's manual for the location of PS/2 ports. ! 

If your computer is AT type (IBM compatible), please contact your local RadioShack for the optional adapter.



INSTALLING BATTERIES

The wireless keyboard and mouse require two AA batteries each (not supplied) for power. We recommend RadioShack alkaline batteries.

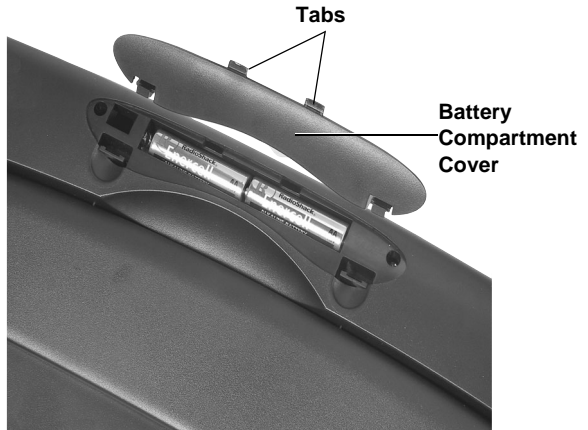
! IMPORTANT !

Keep your previous mouse installed as a back-up until you finish installation

NOTE

Before installing or removing the keyboard or mouse (either the original or the new one) to or from your computer, always turn off your computer first. Installing or removing the keyboard or mouse while the computer is running can cause permanent damage to them or your computer.

In the Keyboard



1. Push up on the tabs to lift and remove the battery compartment cover on the bottom of the keyboard.
2. Insert two AA batteries into the battery compartment according to the polarity marked inside the battery compartment.
3. Replace the battery compartment cover.

In the Mouse



1. Press the latch on the top of the battery compartment cover. Then lift off the cover.
2. Insert two AA batteries into the battery compartment according to the battery polarity marked inside the compartment.
3. Replace the cover.

SETTING UP THE KEYBOARD

Using the Keyboard's Palm Rest and Elevation Tabs

If your desktop space is large enough, you may use the palm rest which supports your forearms for comfortable operation. Simply turn the keyboard over, then lift the palm rest towards you. Turn the keyboard back over. To return the palm rest to it's original position, flip it backwards until it clicks into place.

To use the elevation tabs to elevate the keyboard, turn the keyboard over, lift the tabs, and turn the keyboard back over.

Elevation Tab Down



Elevation Tab Up



Wireless Keyboard, Mouse, and Receiver

The wireless keyboard and mouse give you free movement. For optimal performance, place the receiver at least 8 inches (about 20cm) away from the keyboard, mouse and other electrical devices, such as a computer, monitor, and so on. !

Setting the ID Channel

There is one ID channel button each on the top cover of the receiver, bottom of the wireless keyboard and mouse. Before using this wireless mouse and keyboard system, you must set the ID channel first by pressing each channel button. Follow these steps to set the ID channel.


1. Press the top cover (channel button) on the receiver first, the top green LED on the receiver flashes slowly for about 8 seconds.


You must proceed with the next steps while the green LED is flashing, otherwise the channel will not be set.

! IMPORTANT !

- Do not use the keyboard or mouse on a desk made of glass, mirror, iron, or black velvet. A flat surface is necessary for the optical sensor to work.
- For normal transmit distance, avoid using this device on a metal surface because a large surface of iron, aluminum, copper, or other metal will shield or ground the keyboard's or mouse's RF antenna and receiver.
- If your notebook computer has a metal (contains aluminum or magnesium) case, the LCD panel's metal housing will isolate partial power of the RF signal from the keyboard and mouse. This will result in reducing the transmitting distance when you connect the receiver on the back of the LCD panel; however, your mouse and keyboard should work properly while using them beside your notebook computer.


NOTE

- You must reset the ID channel each time you change the batteries. Your wireless keyboard and optical mouse channel automatically select one of the 256 ID codes after you press both channel buttons.
- When you open the keyboard HotKey setting menu,  H... appears on the task bar and disappears when the HotKey setting menu is closed.
- The left button is a default click button and you do not need to set it.
- If you are using *Windows XP* or *Windows 2000*, you must reinstall the software if:


The eyes on the mouse icon () in the task bar do not move or the eyes are closed.

The receiver was originally installed on the PS/2 and you later switch to a USB port.

You install the receiver on one USB port and later move it to a different USB port.

2. Press the channel button on the bottom of the wireless mouse. The top green LED indicator on the receiver flashes.
3. Press the channel button on the bottom of the wireless keyboard. The top green LED on the receiver flashes.
4. Wait until the green LED on the receiver goes off. Then move the wireless mouse and press any key on the wireless keyboard. If the green LED flashes, the channel connection among the receiver, wireless mouse and keyboard is successfully set. If the green LED indicator does not flash, channel connection fails and you must repeat Steps 1–4. 

SOFTWARE INSTALLATION




To perform the various customized functions for operation with the Internet and Windows, follow these steps to install the supplied driver CD. 

1. Turn on your computer and start Windows.
2. Insert the supplied driver CD into your CD-ROM drive.
3. *If your computer is AutoRun compatible*, wait for the setup screen to display, then go to step 4.


If your computer is not AutoRun compatible, click **Start** on the Windows task bar, then **Run**. Type **d:\SETUP.EXE** and click **OK**, if **<d:>** is the drive designation of your CD-ROM drive.

4. Follow the on screen instructions to install the driver then restart your computer.

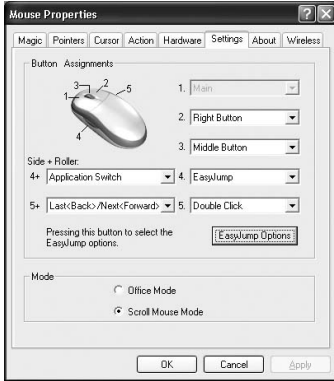
WIRELESS MOUSE AND KEYBOARD SETTING MENU

The wireless mouse's and keyboard's setting menu in the supplied driver software enables you to set the wireless mouse or keyboard buttons to your preference. You can change the pointer type, mouse speed, cursor size, pointing direction, and so on. Double-click  or  at the lower right of the *Windows* task bar to open the respective button control panel. 

Customizing the Mouse Settings

To open the Mouse Properties dialog box for customizing the mouse setting, double-click  in the task bar or click *Windows /Start /Programs /Scroll Mouse Control Panel* (“Mouse Properties” setting menu).

Mouse Button Assignments



The Button Assignments’ function in the *Mouse Properties Settings* tab lets you set the mouse button function in a more efficient way. You can assign the most frequently used commands in *Windows* to the mouse buttons. To open the *Mouse Properties Settings* menu for button

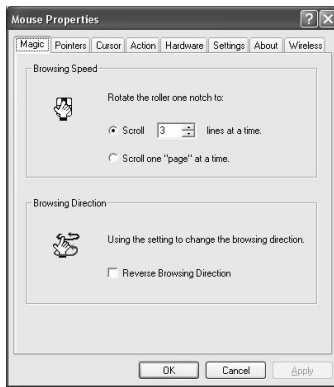
assignments, double-click  in the *Windows* task bar and click the *Mouse Properties* tab. *Magic, Pointer, Cursor, Action, Hardware, Settings, About, and Wireless* appear..

Left Button — The left button is a default click button. You do not need to set this button.

Right Button — You can assign this for frequently used keyboard button and mouse functions, in addition to features like Easy-Jump, Auto-Panning, Zoom, and so on.

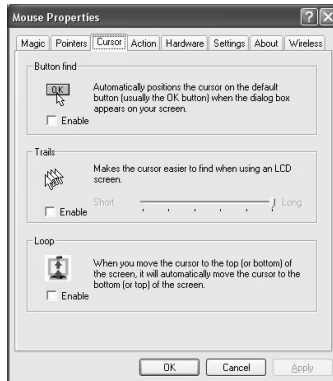
Middle (Roller) Button — You can assign this button for frequently used keyboard button and mouse functions in addition to features like Easy-Jump, Auto-Panning, Zoom, and so on.

Side Button — You can assign certain functions in the *Mouse Properties* menu for the left or right side button or operate it with the roller button.



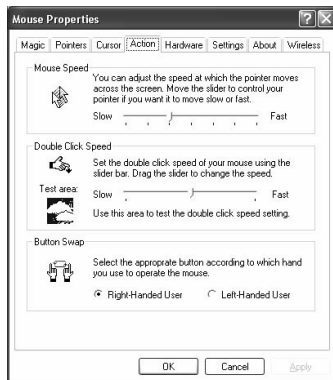
Browsing Speed — Adjust your browsing speed to the desired setting.

Browsing Direction — Adjust your browsing direction to scroll either forward or backward when you move the scroll wheel.



Button Find — Automatically positions the cursor on the default button (usually **OK** or **Enter**) when the dialog box appears on your screen.

Trails — This option makes it easier to find the cursor when using an LCD monitor. This option cannot be used if your monitor does not support it.

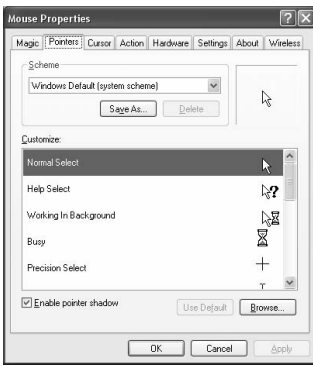


Loop — You can enable the cursor to automatically move to the top (or bottom) of the screen. The Button Assignment feature lets you assign the most frequently used commands in *Windows* to the mouse buttons.

Mouse Speed — This function lets you adjust the speed at which the pointer moves across the screen.

Double Click Speed — Use this function to set the double-click speed of the mouse.

Button Swap — select this option if you want to operate the right mouse button as the primary button.

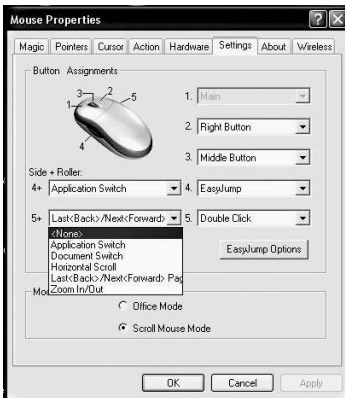


Pointers — Customize cursor appearance or select to use the default settings.

Office Mode — Only supports *Microsoft Office* along with some new applications. Features include zoom, scrolling and Auto-scrolling. It is similar to *Microsoft's IntelliMouse*.

Scroll Mouse Mode — supports all applications that use scroll bars, including Office, with zoom, Auto-panning, and scrolling functions. This is the default setting.

Application Switch/Document Switch



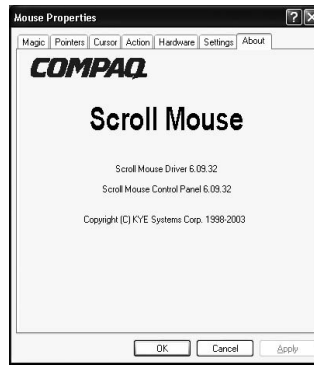
When the left or right-button is set to *Application Switch* or *Document Switch*, you can quickly switch from one open application or document to another without moving the mouse. To switch to a specific application or document, press the left or right button and roller button to select the application or document.

Horizontal Scroll — When the side-button is set to "Horizontal Scroll", you can press the side-button and roll the roller button to scroll the document horizontally.

Last<Back>/Next<Forward> — Browses page remark function when you browse an Internet document. When the left or right -button is set to **Last<Back>/Next<Forward>**, you can quickly switch from one page to another by pressing the left or right- button and roller button to move pages without moving the mouse.

Zoom In/Out — When the left or right -button is set to "Zoom In/Out", you can press the left or right button and roll the roller button to zoom in/out of document windows.

About — This tab lists the product, version, and copyright information.

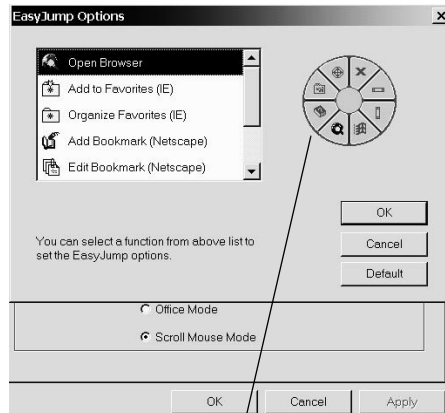


EasyJump for Windows

Click **EasyJump Options** on the *Settings* tab. The *Easy Jump Options* dialog box appears. ↙

NOTE

Some panels inside the EasyJump circle might appear gray (disabled). This is because your application software does not support those functions. The horizontal and vertical scroll bars only operate on documents that support the driver such as *Microsoft Word*, *Excel*, *Notepad*, and *Wordpad*.



Close Ap — Close the application you are using.

Horizontal — Moves the cursor to the horizontal scroll bar.

Vertical — Moves the cursor to the vertical scroll bar.

Start — Activates the *Windows* Start menu.

Internet Access — This function opens the Browser to access the Internet.

Help — This opens the computer's *Help & Support* menu.

Control Panel — Opens the mouse's control panel (*Mouse Properties* dialog box).

Auto-Panning — You can set this function in the *Button Assignments* menu. Move the mouse, and the document moves in the direction you just moved.

Zoom function for Office and IE Applications

Press **Ctrl** and move the scroll wheel forward or backward to zoom in or out. You can also use just one hand to zoom in or out by setting the right button to be the Ctrl function. Then press the right button and move the scroll wheel forward or backward to zoom in or out of the document.

SETTING WIRELESS MOUSE OPTION'S FOR INTERNET


Open the *Mouse Properties* menu and click on the **Settings** tab. Then click *EasyJump Options* to display the functions such as Open Browser, Add to Favorites (IE), Organize Favorites (IE), Add Bookmark (Netscape), Edit Bookmark (Netscape), Go next (Forward) and Go Previous (Back).

SETTING THE KEYBOARD'S HOTKEYS

Before you can use the convenient one touch hotkeys, you must set the hotkeys.


HotKey Configuration	
Search	:Web Site
Web/Home	:Microsoft Internet Explorer
Mail	:Microsoft Outlook Express
My Computer	:My Computer
Calculator	:Windows Calculator

Setting the Media Key


1. Double-click  on the *Windows* task bar to display the *HotKey* menu.

2. Click the **Media** tab and select *List Supported Media Player* or *Eject/Insert CD-ROM*, then click **Apply** then **OK**.




3. To perform the selected function, press  on the keyboard. Then follow the on screen instructions.

Setting the Play/Pause Key


1. Double-click  on the *Windows* task bar to display the *HotKey* menu.

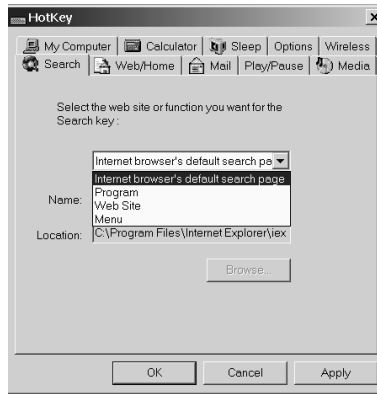
2. Click the *Play/Pause* tab to select *Microsoft Deluxe CD Player*, or *Windows Media Player*, then click **Apply** then **OK**.




3. To perform the selected function, press  on the keyboard then follow the on screen instructions.


Setting the Search Key

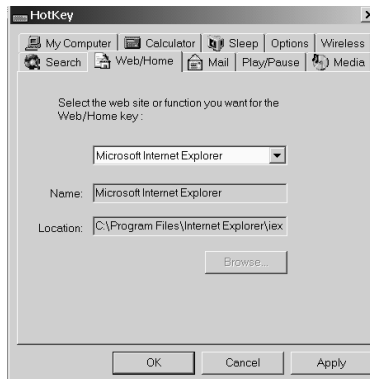
1. Double-click  on the *Windows* task bar to display the *HotKey* menu.
2. Click the *Search* tab to select the web site or function you want for the **Search** key. Then click **Apply** then **OK**.



3. To perform the selected function, press  on the keyboard.



Setting the Web/Home WWW Key

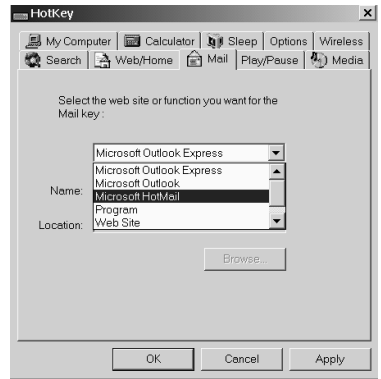
1. Double-click  on *Windows* task bar to display *HotKey* menu.
2. Click the *Web/Home* tab to select the *Microsoft Internet Explorer*, *Program*, *Web Site*, *Menu* functions you want for the *Web/Home* key **www**. Click **Apply** then **OK**.




3. To perform the selected function, press **www** on the keyboard.



Setting the Mail Key

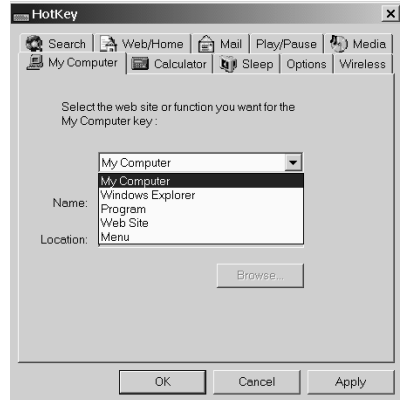
1. Double-click  on the *Windows* task bar to display the *HotKey* menu.
2. Click the *Mail* tab to select *Microsoft Outlook Express*, *Microsoft Outlook*, *Program*, *Web Site*, and *Menu* functions you want for the **Mail** key . Click **Apply** then **OK**.




3. To perform the selected function, press  on the keyboard.




Setting the “My Computer” Key

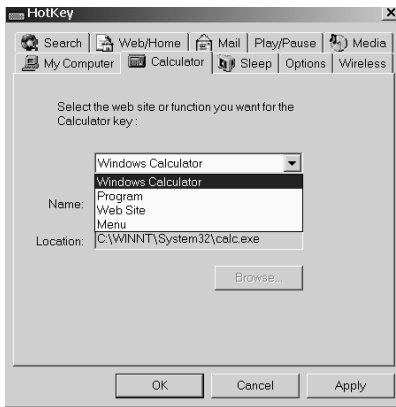
1. Double-click  on *Windows* task bar to display the *HotKey* menu.
2. Click on the *My Computer* tab to select *My Computer*, *Windows Explorer*, *Program*, *Web Site*, *Menu* functions you want for the **My Computer** key . Click **Apply** then **OK**.



3. To perform the selected function, press  on the keyboard.

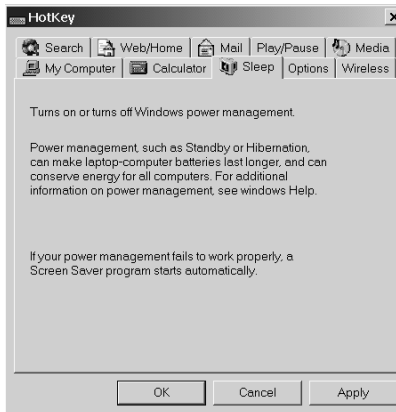
Setting the Calculator Key

1. Double-click  on the *Windows* task bar to display the *HotKey* menu.
2. Click on the *Calculator* tab and select *Windows Calculator*, *Program*, *Web Site*, *Menu* functions you want for the *Calculator* key . Click **Apply** then **OK**.
3. To perform the selected function, press  on the keyboard.






Setting the Sleep Key

For computers running *Windows 95 (PS/2 only)* or *Windows NT* version 4.x without a power management program, the *Sleep* Hot Key can be assigned one of the following functions from the Hot Key user interface. *Start a screen saver, Log off Windows, Shut down Windows.*





For computers with power-management such as *Sleep*, *Suspend*, or *Hibernation*, the *Sleep* feature automatically assigns power-management to the **Sleep** HotKey.

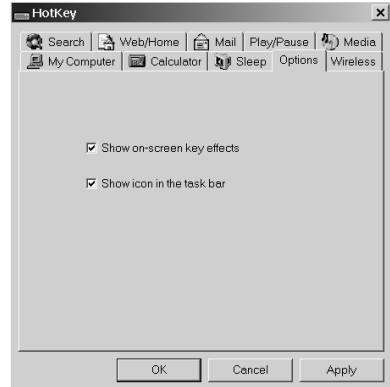
1. Double-click  on the *Windows* task bar to display the *HotKey* menu.
2. Click on *Sleep* tab to select *turning on or turning off Windows* power management . Click **Apply** then **OK**.


3. To perform the selected function, press  on the keyboard.


Setting Options for Displaying the HotKey Icon


1. Double-click  on the *Windows* task bar to display the *HotKey* menu.

2. Click the *Options* tab to select “Show on-screen key effects” and/or “Show icon in the task bar”. If you select “Show on-screen key effects” only, the keyboard icon  will not appear.




3. To access *HotKey* menu, double click .

To directly access the *HotKey* setting for *Search, Web-Home/Mail/My computer/Calculator*, click .

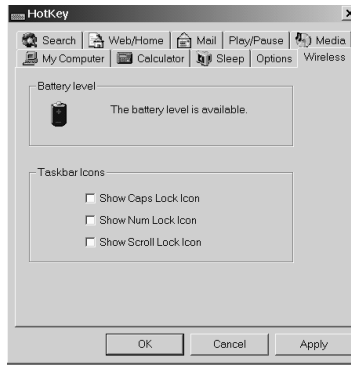
To access the *HotKey* Configuration user's interface for *HotKey Configuration, Hide Icon, About* (*HotKey* version), *Close HotKey*, right click .

Setting the Wireless Function

The wireless function lets you see the mouse's and keyboard's battery level and shows *Caps Lock, Num Lock,* and *Scroll Lock* icons in the task bar.

1. Click  on the *Windows* task bar to display the *HotKey* menu.

2. Click the *Wireless* tab to select showing *Caps Lock*, *Num Lock*, and *Scroll Lock* icons in the task bar, then click **Apply**.



TROUBLESHOOTING

Problem	Possible Reason	Solution
<p>The wireless keyboard and mouse do not work.</p>	<p>No batteries are installed in the wireless keyboard and mouse or the batteries are installed incorrectly.</p>	<p>Install fresh batteries or reinstall the batteries facing the correct directions.</p>
	<p>The receiver for the wireless keyboard and mouse are incorrectly connected to your computer.</p>	<p>Make sure the green connector goes to the mouse port and the purple connector goes to the keyboard port. (see “Connecting the Receiver to Your Computer” on Page 7)</p>
	<p>The ID channel for the receiver, keyboard and mouse are not identical.</p>	<p>Set the ID channel for the receiver, keyboard, and mouse (see “Setting the ID Channel” on Page 9).</p>
<p>The cursor does not move or the keyboard does not work.</p>	<p>The receiver, wireless keyboard, and mouse are placed at an improper distance.</p>	<p>Place the wireless receiver at least 8 inches (20cm) from the mouse, keyboard, monitor, computer, and other electrical devices (see “Wireless Keyboard, Mouse, and Receiver” on Page 9). Do not use your wireless keyboard or mouse on a metal surface. Use a pad to prevent interference.</p>
<p>The ACPI Power Management Keys do not work properly.</p>	<p>The ACPI (Advanced Configuration and Power Interface) needs correct OS and BIOS to support it. Now, only Windows98 (or later) supports ACPI Power Management Keys. If you use any other systems, ACPI Power Management Keys would not work properly. If you already have Windows98 (or later), make sure your system meets ACPI specs completely. If so, you can only get the sleep function.</p>	<p>To find which BIOS supports ACPI, connect to: http://www.microsoft.com/hwdev/onnow/ACPI_lists.htm</p>

FCC DECLARATION OF CONFORMITY

This device complies with Part 15 of the *FCC Rules*. Operation is subject to the following two conditions: (1) this device may not cause harmful interference, and (2) this device must accept any interference received, including interference that may cause undesired operation.

Product:	27MHz Wireless Keyboard and mouse
Model:	26-750
Responsible Party:	RadioShack 100 Throckmorton Fort Worth, TX 76102
Phone:	817-415-3200



THE FCC WANTS YOU TO KNOW

This equipment has been tested and found to comply with the limits for a Class B digital device, pursuant to Part 15 of the *FCC Rules*. These limits are designed to provide reasonable protection against harmful interference in a residential installation. This equipment generates, uses and can radiate radio frequency energy and, if not installed and used in accordance with the instructions, may cause harmful interference to radio communications.

However, there is no guarantee that interference will not occur in a particular installation. If this equipment does cause harmful interference to radio or television reception, which can be determined by turning the equipment off and on, the user is encouraged to try to correct the interference by one or more of the following measures:

- Reorient or relocate the receiving antenna.

Environment Requirements

In order to keep your wireless keyboard and mouse in the perfect performance and avoid the unnecessary damages, please read the following cautions:

- Do not use the device in a damp environment, such as a bathroom, a damp basement, a swimming pool, etc.
- Do not try to repair the device by yourself.
- Under the following circumstances, have the device repaired by qualified personnel.
 - The cable or plug is damaged or worn.
 - Liquid has entered the device.
 - The device has fallen and the casing has been damaged.
 - The performance of the device is clearly becoming worse.
- Position the device so that the cable cannot be damaged.
- If the device must be cleaned, use a damp cloth. Do not use a liquid cleaner or a spray.

- Increase the separation between the equipment and receiver.
- Connect the equipment into an outlet on a circuit different from that to which the receiver is connected.
- Consult your local RadioShack store or an experienced radio/TV technician for help.
- If you cannot eliminate the interference, the FCC requires that you stop using your keyboard and mouse.

Changes or modifications not expressly approved by RadioShack may cause interference and void the user's authority to operate the equipment.

CARE

Keep the keyboard and mouse dry; if they get wet, wipe them dry immediately. Use and store the keyboard and mouse only in normal temperature environments. Handle the keyboard and mouse carefully; do not drop it. Keep the keyboard and mouse away from dust and dirt, and wipe it with a damp cloth occasionally to keep it looking new.

CLEANING THE WIRELESS MOUSE

1. Remove the batteries inside the mouse.
2. Dampen a cotton swab with mild soap and water.
3. Gently wipe the optical sensor clean, being careful not to scratch the surface of the sensor.
4. Replace the batteries in the mouse.

Limited Ninety-Day Warranty

This product is warranted by RadioShack against manufacturing defects in material and workmanship under normal use for ninety (90) days from the date of purchase from RadioShack company-owned stores and authorized RadioShack franchisees and dealers. EXCEPT AS PROVIDED HEREIN, RadioShack MAKES NO EXPRESS WARRANTIES AND ANY IMPLIED WARRANTIES, INCLUDING THOSE OF MERCHANTABILITY AND FITNESS FOR A PARTICULAR PURPOSE, ARE LIMITED IN DURATION TO THE DURATION OF THE WRITTEN LIMITED WARRANTIES CONTAINED HEREIN. EXCEPT AS PROVIDED HEREIN, RadioShack SHALL HAVE NO LIABILITY OR RESPONSIBILITY TO CUSTOMER OR ANY OTHER PERSON OR ENTITY WITH RESPECT TO ANY LIABILITY, LOSS OR DAMAGE CAUSED DIRECTLY OR INDIRECTLY BY USE OR PERFORMANCE OF THE PRODUCT OR ARISING OUT OF ANY BREACH OF THIS WARRANTY, INCLUDING, BUT NOT LIMITED TO, ANY DAMAGES RESULTING FROM INCONVENIENCE, LOSS OF TIME, DATA, PROPERTY, REVENUE, OR PROFIT OR ANY INDIRECT, SPECIAL, INCIDENTAL, OR CONSEQUENTIAL DAMAGES, EVEN IF RadioShack HAS BEEN ADVISED OF THE POSSIBILITY OF SUCH DAMAGES.

Some states do not allow limitations on how long an implied warranty lasts or the exclusion or limitation of incidental or consequential damages, so the above limitations or exclusions may not apply to you.

In the event of a product defect during the warranty period, take the product and the RadioShack sales receipt as proof of purchase date to any RadioShack store. RadioShack will, at its option, unless otherwise provided by law: (a) correct the defect by product repair without charge for parts and labor; (b) replace the product with one of the same or similar design; or (c) refund the purchase price. All replaced parts and products, and products on which a refund is made, become the property of RadioShack. New or reconditioned parts and products may be used in the performance of warranty service. Repaired or replaced parts and products are warranted for the remainder of the original warranty period. You will be charged for repair or replacement of the product made after the expiration of the warranty period.

This warranty does not cover: (a) damage or failure caused by or attributable to acts of God, abuse, accident, misuse, improper or abnormal usage, failure to follow instructions, improper installation or maintenance, alteration, lightning or other incidence of excess voltage or current; (b) any repairs other than those provided by a RadioShack Authorized Service Facility; (c) consumables such as fuses or batteries; (d) cosmetic damage; (e) transportation, shipping or insurance costs; or (f) costs of product removal, installation, set-up service adjustment or reinstallation.

This warranty gives you specific legal rights, and you may also have other rights which vary from state to state.

RadioShack Customer Relations, 200 Taylor Street, 6th Floor, Fort Worth, TX 76102

Free Manuals Download Website

<http://myh66.com>

<http://usermanuals.us>

<http://www.somanuals.com>

<http://www.4manuals.cc>

<http://www.manual-lib.com>

<http://www.404manual.com>

<http://www.luxmanual.com>

<http://aubethermostatmanual.com>

Golf course search by state

<http://golfingnear.com>

Email search by domain

<http://emailbydomain.com>

Auto manuals search

<http://auto.somanuals.com>

TV manuals search

<http://tv.somanuals.com>