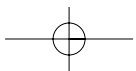
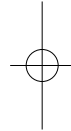
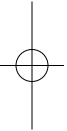


Final MW u/g



O<sub>2</sub>

mobile web



Compaq, the Compaq Logo, iPAQ, and the iPAQ Pocket PC product design are trademarks of Compaq Information Technologies Group, L.P. in the U.S. and/or other countries.

All examples of data size and usage are estimated. Actual data used in any application may vary significantly. All web and WAP sites shown are given as examples only. Their use does not signify recommendation or authorisation of the site or of its contents, or any association between its owners and O<sub>2</sub>. Some web sites may not be configured for use with PDAs or pocket PCs.

© 04/02 O2 (UK) Limited.

All information relating to Mobile Web may be changed without notice.

All information is correct at time of production. Services may be modified, supplemented or withdrawn.

For the latest version of O<sub>2</sub> Mobile Web installation software visit [www.o2.co.uk/mobileweb](http://www.o2.co.uk/mobileweb)

O2 (UK) Limited, 260 Bath Road, Slough, Berkshire SL1 4DX  
Registered in England No. 1743099 Registered Office as above.

O<sub>2</sub>

getting started instructions for Pocket PC® and Palm™ Handheld users

## contents

### **Section 1 – What you need to get started**

#### **Section 2 – Getting started on your Pocket PC**

Using Mobile Web on your Pocket PC	7
Email on your Pocket PC	9
Web browsing tips for Pocket PC	13

#### **Section 3 – Getting started on your Palm™ Handheld**

Using Mobile Web on your Palm™ Handheld	17
Email on your Palm™ Handheld	19

#### **Section 4 – Using Mobile Web**

Enjoy the full Internet – anytime, anyplace	21
O2 PDA homepage	22
Charging and data usage	25
What you can do with 1MB	26
Accessing Mobile Web while abroad	27

#### **Section 5 – Other Useful Information**

Additional steps to set up your Pocket PC with Bluetooth	28
Additional steps to set up your integrated Pocket PC	28
Setting up your WAP services	29
Uninstalling mobile web	30
Linking your PDA to your phone	31
Activating your phone's infrared port	31
Activating your phone's Bluetooth port	35
Frequently asked questions	36
Troubleshooting	38

#### **Need help with Mobile Web?**

If you have difficulty connecting to the O2 Mobile Web service, please visit [www.O2.co.uk/mobileweb](http://www.O2.co.uk/mobileweb) or call your Service Provider.

## section 1

### what you need to get started

To use Mobile Web you will need...



**1 A subscription to a Mobile Web tariff.**



**2 Any of the following PDA devices:**  
 Pocket PC: Windows® powered Pocket PC – CE 3.0 or Pocket PC 2002 (Service Pack 1). 400KB free disk space.

Palm™ Handheld: Operating System 4.0. 100KB free disk space.

Palm™ Handhelds are not supplied with a web browser – this must be downloaded (for more information visit [www.o2.co.uk/mobileweb](http://www.o2.co.uk/mobileweb)).

Please note that not all browsers are supported for use on Mobile Web



**3 Any of the following GPRS phones:**

Ericsson T39  
 Ericsson T68  
 Ericsson R520  
 Nokia 6310  
 Nokia 6510  
 Nokia 8310  
 Siemens S45  
 Siemens ME45

Before you can access Mobile Web, your PDA will need to be set up so that it can talk to your GPRS phone, and connect to the O2 network and the Internet. You can do this using the Mobile Web 'Getting Started' CD-ROM. Setting up is a simple step by step process.

A copy of the CD-ROM should be included in this pack. If it is not, you can download the latest version from our website – visit: [www.o2.co.uk/mobileweb](http://www.o2.co.uk/mobileweb)

Items 2 and 3 may be combined into an 'all in one' device (with built-in phone) eg. Trium Mondo.

#### First, connect your PDA to your PC

Following your PDA manufacturer's instructions, check that your PDA can 'sync' with your PC. To 'sync' you will need the cable or cradle supplied with your PDA, together with software enabling your PC to talk to your PDA.

You will need to 'sync' to transfer Mobile Web settings from the PC to your PDA, and also to download a copy of your PC emails and calendar.

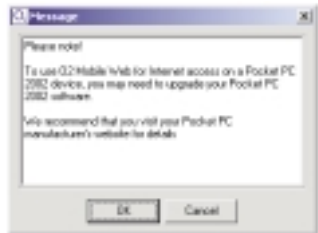
## section 2 getting started on your pocket pc



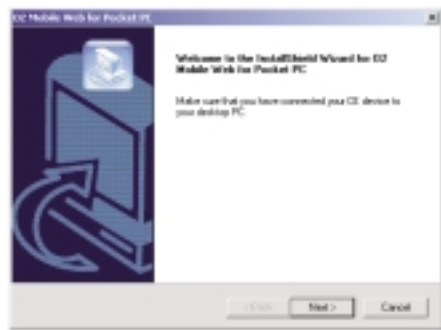
Your Pocket PC must be able to 'sync' with your PC before you set it up for Mobile Web.

- Connect your Pocket PC to your PC via the cable or cradle.
- Load the Mobile Web 'Getting Started' CD into your PC. It will start automatically.
- Select **Mobile Web 2.1 for Pocket PC** from the installation menu.

Any Pocket PC with CE3.0 or Pocket PC 2002 can be set up using this option.



NB: Pocket PC 2002 users may need to download and install service pack 1 available from your PDA manufacturer's website.

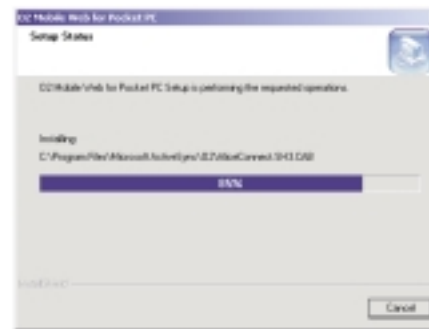


- An **InstallShield Wizard** window will appear to let you know that the application is about to be installed. This will disappear in about 20 seconds.
- A larger window will then appear, asking you to make sure your PDA is connected to the PC via the cable or cradle. Tap **Next** to continue.

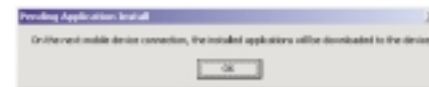


- The licence agreement for the installation software will then be displayed. Please read the instructions and tap **Yes** if you agree to accept its terms and conditions.

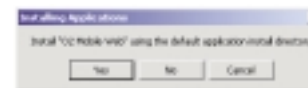
If you choose 'No' you will be unable to proceed with this method of setting up your PDA.



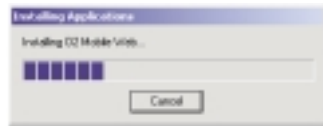
- A new screen will indicate that the required files are being installed automatically.



If your Pocket PC is not in the cradle, a message will appear letting you know that it will be installed the next time you 'sync' with your PC.

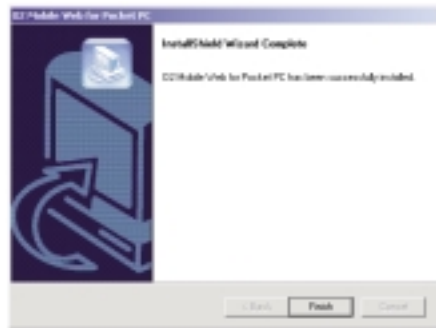


- A small window **Installing Applications** will be displayed, asking whether you want to install in the default directory, tap **Yes**.



The message **Installing Mobile Web** will appear, and on completion, the window will close automatically.

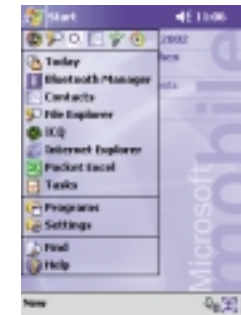
- You will now be asked to check your PDA's screen for any further instructions.



- A **Maintenance Complete** window will then appear. Tap **Finish**.
- The set-up process is now complete.

Note: If you have an 'all in one' Pocket PC (e.g. Trium Mondo) or a Pocket PC with Bluetooth (e.g. Compaq iPAQ™ H3870) you should turn to page 28 for an additional step required to set up Mobile Web.

## using mobile web on your pocket pc



Once you have followed the simple set up instructions you are ready to use Mobile Web.

### Connecting

- Tap **Start**, then **Programs**.

If you have used O2 Mobile Web recently you can simply tap 'Start' then the 'O2 Icon' at the top of the start menu without having to go into the Programs folder.

- Tap **O2 Mobile Web**.

Activate: your phone's infrared port (see pages 31-34), and ensure that it is aligned with the infrared port on your handheld PC/PDA;

or, your PDA and phone Bluetooth ports (see pages 28 and 35). Note: you must have 'paired' your Bluetooth phone and Bluetooth handheld PC/PDA first.

- Tap **Connect**.

In a few seconds the connection and Internet Explorer will open – and the O2 PDA homepage will appear.

On Pocket PC CE3.0, an 'O2 Mobile Web Email' wizard will pop up the first time you use Mobile Web. The Wizard lets you create an email service in your inbox, so you can use your inbox to send and receive emails online (see page 9). To set up an email service in your inbox, follow the instructions. If you don't want to do this now, you can do it later. Tap 'Cancel'.

You can also connect via GSM – if, for example, you are overseas, in a country without GPRS coverage. To do this select O2 Mobile Web (GSM pay per minute) and click Connect. Standard minimum charges apply. Please visit [www.o2.co.uk/mobileweb](http://www.o2.co.uk/mobileweb) for details of call charges.



The O2 PDA homepage contains a range of hand picked PDA-friendly web sites, see page 22 for more information.

The default homepage may be changed by referring to the instructions in the advanced user guide on the Getting Started CD-ROM. To access the guide insert the Getting Started CD-ROM and select 'User Guides' from the file menu.



### Disconnecting

- Tap **Start**, then **Programs**, or tap **Start**, then the **O2 Icon** at the top of the start menu.
  - Tap **O2 Mobile Web**.
  - Tap **Disconnect**.
- De-activate the infrared port on your mobile phone (see pages 31 - 34).

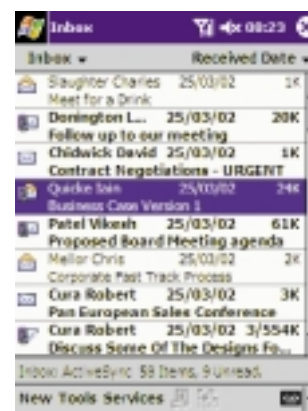
If the infrared link between your phone and PDA is interrupted, your Internet connection may be dropped. If this happens, close all programs and repeat the steps shown on the previous page to reopen the connection. You may have to reboot your PDA.

## email on your pocket pc



### Internet-based email

You can access your Internet-based email with Mobile Web. To access, for example, Connectedmail, Hotmail, Yahoo, etc, simply enter the url of your email provider's site via Mobile Web and 'log in' as you normally do.



### Work email

It is also possible to send and receive your work email online using Mobile Web, if your workplace supports POP3 or IMAP4. You will need to discuss this with your IT Manager. Your Pocket PC 'inbox' can also be used to read and reply to email off-line. You can do this by synchronising it with your PC. Refer to your Pocket PC user guide for more information.

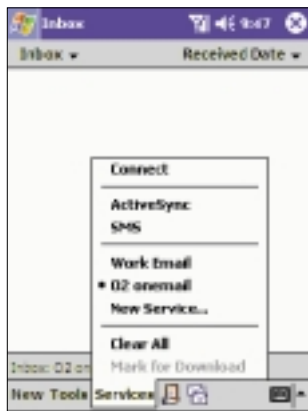
### An easier way to use email

Mobile Web lets you create an email service in your Pocket PC's inbox, and use it to read and send your emails. This avoids having to open your web browser and go to your email provider's web site each time you want to check mail. It's a more convenient way of accessing your emails as they are downloaded to your inbox.

To help you set up an email account in your inbox, an Email Wizard (for Pocket PC CE3.0 only) was installed on your Pocket PC during the setup process.

Pocket PC 2002 users should follow the manual set up instructions on the following pages.





The wizard will pop up automatically the first time you use Mobile Web. If your email provider is included on the list, you can follow the on screen instructions to automatically set up a POP3 email 'Service' in your inbox.

If your email provider is AOL, MSN or Hotmail, you should use Internet based email (page 9). For Freeserve, and other POP3 email providers not included in the Wizard, you can manually configure an email account using the instructions set out in the 'Manual setup of POP3 and IMAP4 services' (pages 11 and 12). Please note that there is a separate section for both Pocket PC 2002 and Pocket PC CE3.0.

You can also access the Email Wizard from the programs menu, **Add Email Account**.

- To create an account, select the type of account from the list displayed, and enter the following information:
  - Account name
  - Email address
- You can create additional accounts by ticking: **I want to set up more Email accounts**.
- Add the new name and email address, and then click **Finish**.
- If you do not wish to set up any further accounts, click **Cancel**.
- To modify any details or remove an account, please refer to your email program.

### Manual set up of POP3 and IMAP4 services.

To set up your 'inbox' you will need to confirm that your email service provider or workplace offers POP3 or IMAP4 access – you will then need the following information:

- POP3 or IMAP4 'Incoming Mail' server address.
- SMTP 'Outgoing Mail' server address.
- Domain (for work email).

*This functionality is not supported by all email providers. You will need to refer to your email provider for confirmation that they support POP3/IMAP4 email access.*

### (Pocket PC 2002)

- Tap **Start** at top left of display.
- Tap **Inbox**.
- Tap **Services**.
- Tap **New Service**.
- Enter email address.
- Tap **Next** to initiate auto-configuration. Auto-configuration (Pocket PC 2002 only) attempts to connect your PDA to your email server and download necessary settings, avoiding the need for you to enter them manually. You must be connected to Mobile Web for this to occur. If auto-configuration is successful, you can begin downloading messages from the server.

If unsuccessful, you will need to contact your ISP for server type and POP3/IMAP4 server name and then follow the instructions below.

### To skip auto-configuration, if unsuccessful

- Tap **Skip** or **Next**.
  - Enter name in the **Your Name** field.
  - Enter **Username** and **Password** and tick **Save Password** box, if required. (This is recommended to avoid having to enter the password each time you receive email.)
  - Tap **Next**.
  - Select **Service Type** from drop-down menu (POP3 or IMAP4).
  - Enter a **Name** for the account.
  - Tap **Next**.
  - Enter **Incoming Mail** server address (for POP3 or IMAP4).
  - Enter **Outgoing Mail** server address (for SMTP).
- You should use 'smtp.o2.co.uk' for this server address.*
- Enter **Domain** if required (LAN only).
  - Tap **Options** to access additional settings, eg, to:
    - change time intervals for downloading new messages
    - download attachments
    - limit number of messages downloaded.
  - Tap **Finish**.



**(Pocket PC CE3.0)**

- Tap **Start**, then **InBox**.

Tap **Services**.

Tap **New Service**.

Select **Service Type** from drop-down menu (POP3 or IMAP4).

- Enter a **Name** for the account.
- Tap **Next**.

Leave **Connection** blank.

Enter incoming POP3 or IMAP4 Mail Server address.

Enter **User ID** and **Password** and tick **Save Password** box if required. (This is recommended to avoid having to enter the password each time you receive email.)

Tap **Next**.

Enter **Domain** if required (LAN only).

Enter outgoing **SMTP host** address.

You should use 'smtp.o2.co.uk' for this server address.

Enter E-Mail address as the **Return Address**.

Tap **Next**.

Options screen:

Untick (or leave unticked) **Disconnect service after actions are performed**.

Check for new messages every **xx** minutes.

When messages arrive, notify me (IMAP4 only).

Tick (or leave ticked) **Send using MIME format** (POP3 only).

Only display messages from the last **xx** days.

Tap **Next**.

The following options can also be selected...

Either: **Get message headers only** and tick/untick **Include xx lines**.

Or: **Get full copy of messages**.

**Only synchronise Inbox folder** (IMAP4 only).

When getting full copy: **Get attachments/meeting requests** and tick/untick **Only if smaller than xxK** (IMAP4 only).

**Get meeting requests** (POP3 only).

**Get file attachments** (POP3 only).

Tap **Finish**.

**To send email from your inbox (Pocket PC 2002/CE3.0)**

Ensure you are online with Mobile Web.

- Tap **Start**, then **InBox**.
- Tap **Services** and tap your chosen email service.
- Tap **New**.
- Tap **To: <...>** and enter recipient's email address, or tap the contacts icon at the bottom of the screen.
- Tap **Subj: <...>** and enter subject.
- Tap in main text area and enter message.
- Tap **Send**. This will move your email to your 'Outbox'.

Tap **Send and receive** button (two envelopes image) at the bottom of your screen to send and receive all your emails over the Internet.

**To receive email from your Inbox (Pocket PC 2002/CE3.0)**

Ensure you are online with Mobile Web.

Tap **Start**, then **InBox**.

- Tap **Services** and tap your chosen email service.

Tap **Send and receive** button (two envelopes image) at the bottom of your screen to send and receive all your emails over the Internet.

**web browsing tips for pocket pc****To set the homepage to the present page:**

- Tap **Tools**.
- Tap **Options**
- Tap **Use Current**.

Your Pocket PC will still connect to the O<sub>2</sub> homepage. This will change the homepage of your Internet Explorer.

**To go back one page:**

- Tap the **left arrow** icon at the bottom of the display.

**To go forward one page:**

- Tap **View**.
- Tap **Forward**.

**To refresh the current page:**

- Tap the **green arrows** page icon at the bottom of the display.

**To go to the homepage:**

- Tap the **Home** icon at the bottom of the display.

This is the homepage stored in Internet Explorer.

**To go to a favourites page:**

- Tap the **Folder** icon at the bottom of the display.
- Select the page you wish to visit.

**To add or delete a favourites page:**

- Go to the page you want to add to favorites.
- Tap the **Folder** icon at the bottom of the display.
- Select the **Add/Delete** tab, then **Add**.
- To delete a page simply tap **Delete**.

**To stop the current action:**

- Tap the **red circle with cross** icon at the bottom of the display.

**To open/close the address bar from within Internet Explorer:**

- Tap **View**.
- Tap **Address Bar**.

**To enter a new URL:**

- Highlight the address bar.
- Enter the address in to the address bar.
- Tap the **green arrow** icon at the top of the display to go to the site.

**To fit the current PDA formatted page to your PDA screen:**

- Tap **View**.
- Tap **Fit to Screen**.

**To send the current page link to an email address:**

- Tap **Tools**.
- Tap **Send link via email**.
- Enter the appropriate email address.
- Tap **Send**.

**To copy text from a page:**

- Highlight the text you wish to copy (by dragging the stylus over the relevant text).
- Tap **Tools**.
- Select **Copy**.

This text can now be pasted into another application.

**To copy all the text from a page:**

- Tap **Tools**.
- Tap **Select All Text**.

Once selected, this can be copied and pasted into another application.

**To go to a previously viewed page:**

- Tap **View**.
- Tap **History**.
- Tap required url to visit that site.

**To empty the temporary Internet files from within Internet Explorer:**

- Tap **Tools**.
- Tap **Options**.
- Tap **Delete Files**.
- Tap **OK** (top right corner).

**To clear the history from within Internet Explorer:**

- Tap **Tools**.
- Tap **Options**.
- Tap **Clear History**.
- Tap **OK** (top right corner).

**To change text size from within Internet Explorer:**

- Tap **View**.
- Tap **Text Size**.
- Select the size of text required from the drop-down menu.

**To stop picture download from within Internet Explorer:****Pocket PC CE3.0 only.**

- Tap **Tools**.
- Tap **Options**.
- Tap **Advanced**.
- Tick/untick **Show Pictures**.

**Pocket PC 2002.**

- Tap **Page Icon with red X** at the bottom of the screen.
- Repeat to turn back on.

For more Pocket PC browsing tips, refer to your Pocket PC user guide.

## section 3

### getting started on your palm™ handheld

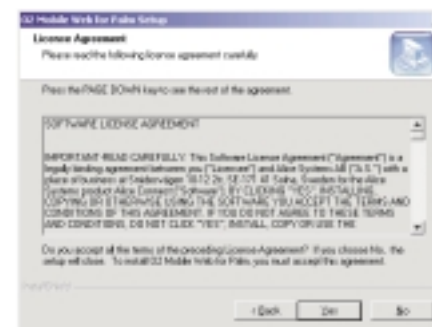


Your Palm™ Handheld must be able to 'sync' with your PC before you set it up for Mobile Web.

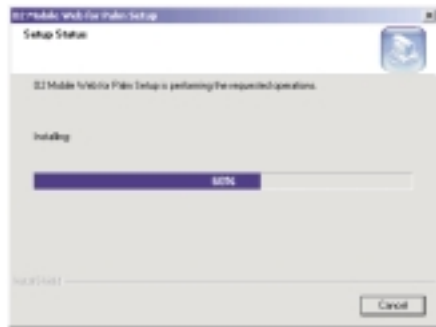
- Connect your Palm™ Handheld to your PC via the cable or cradle.
- Load the Mobile Web 'Getting Started' CD into your PC. It will start automatically.
- Select '**O2 Mobile Web 2.1 for Palm OS**' from the installation menu – Any Palm™ Handheld with O/S 4.0 can be set up using this option.



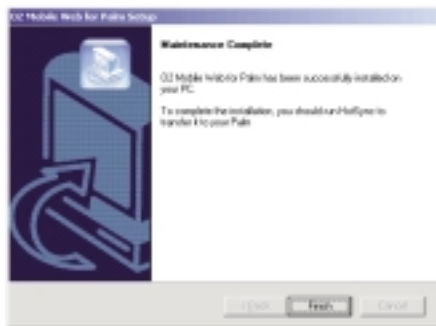
- An **Install Shield Wizard** window will appear to let you know that the application is about to be installed. This will disappear in about 20 seconds.
- A larger window will then appear. Tap **Next** to continue.



- The licence agreement for the installation software will then be displayed. Please read this and tap **Yes** if you agree to accept its terms and conditions. If you choose 'No' you will be unable to proceed with this method of setting up your PDA.



- A new screen will indicate that the required files are being installed automatically.



- A **Maintenance Complete** window will then appear. Tap **Finish** to continue.
- The set-up process is now complete.
- The Mobile Web application will be downloaded automatically the next time you 'sync' your Palm™ Handheld.

## using mobile web on your palm™ handheld

### Surfing with a Palm™ Handheld

Palm™ devices are not supplied with a web browser. You will need to download a suitable web browser. For more information visit [www.o2.co.uk/mobileweb](http://www.o2.co.uk/mobileweb).

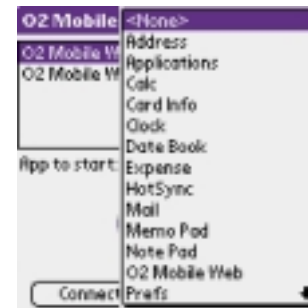
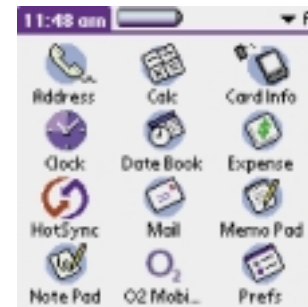
Please note that not all browsers are supported for use with Mobile Web.

### Connecting

- Tap **Home**.
- Tap **O<sub>2</sub> Mobile Web**.

- Tap **<None>** to the right of **App to start** and select your web browser application (only required once).

Tap **O<sub>2</sub> Mobile Web** on the top left corner of the screen, then **Options**, then **Set Default Modem**.





Choose your handset from the list, then tap **Make Default** (only required once).



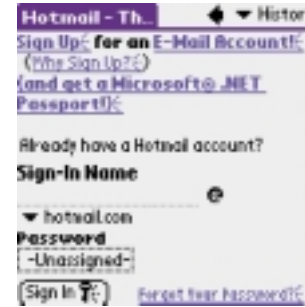
- Activate the infrared port on your mobile phone (see pages 31 to 34), and align it with your PDA's infrared port.
- Tap **Connect**. In a few seconds the connection and your web browser will open – and the O2 PDA homepage will appear.



**Disconnecting**

- Tap **Home**.
- Tap **O2 Mobile Web**.
- Tap **Disconnect**.
- De-activate the infrared port on your mobile phone (see pages 31 - 34).

email on your palm™ handheld

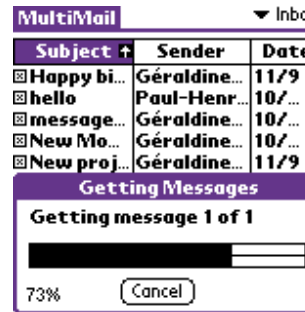


**Palm™ email**

Palm™ Handhelds are not supplied with an email application pre-installed. You will need to load an email application such as 'MultiMail' (free with the bonus CD provided with every new Palm™ Handheld) before you can use an 'inbox'. Please refer to your Palm user guide for details of the Palm website. <http://www.palm.com/software/multimail/mmpro-faq.html>

**Internet-based email**

You can access your Internet-based email with Mobile Web. To access, for example, Connectedmail, Hotmail, Yahoo, etc, simply enter the url of your Internet-based email provider's site via Mobile Web and 'log in' as you normally do.



**Work email**

It is possible to send and receive your work email online using Mobile Web, if your workplace supports POP3 or IMAP4. You will need to discuss this with your IT Manager. MultiMail can also be used to read and reply to email off-line. You can do this by synchronising it with your PC. Refer to your MultiMail user guide for more information.

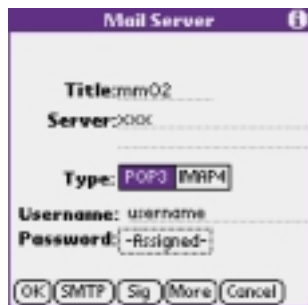


**An easier way to use email**

Mobile Web lets you create a new email service in your email application (e.g. MultiMail), and use it to read and send your emails. This avoids having to open your web browser and go to your email provider's web site each time you want to check mail. It's a more convenient way of accessing your emails as they are 'popped' through to one central place in your inbox.

These instructions are aimed at Palm™ m500/m505 users, running on the Palm™ OS® 4.0. Owners of previous handhelds (i.e. PalmV, PalmVx, PalmIIIc, m100/105 125) will need to purchase and load the Mobile Internet Kit from [www.palm.com/uk](http://www.palm.com/uk)

First, ensure you have installed Multimap SE from the 'Mobile Connectivity Software' CD supplied with your Palm™ m500 series.



- Open the MultiMail application, and select **Mail Server** in the Options menu.
- For title, enter the name of your email service provider eg. mm02.
- For server, enter the mail server settings (you will need to get this from your email service provider).
- For type, select **POP3** or **IMAP4**.
- Enter your **username** and **password**.
- Click on the SMTP button at the bottom of the screen.
- Enter **smtp.o2.co.uk**.
- Enter your email address e.g. (username@xxxx.xxxx).
- Enter your user name e.g. mm02 user
- Tap on **OK**.

#### To send an email from your MultiMail inbox:

- Ensure you are online with Mobile Web
- Select **MultiMail** in the application lounge.
- Select **New** at the bottom of your display.
- Enter email address (**To:....@.....**).
- Enter **subject**.
- Write your email.
- Hit **send**.

#### To receive email in your MultiMail Inbox:

- Ensure you are online with Mobile Web
- Select **Multimap** in the application lounge.
  - Select **Receive** at the bottom of your display.
  - Choose from the two receiving options:
    - **Headers only** – allows you to quickly download the headers of your emails only. The body of your email remains on the server.
    - **Headers and Body** – downloads the full content of your email.
  - Hit **Receive**.

## section 4

### enjoy the full internet – anytime, anyplace\*

With Mobile Web, you can now enjoy full Internet access and email on the move.

You can surf any web site. You can download information. You can send and receive Internet based email, complete with attachments.

And you can do all this wherever you are\* – on a train or in a café, between meetings or sitting in the park, at work or at play.

To provide optimised viewing for smaller screens, you'll find some specially configured PDA-friendly Internet sites. These sites usually have a dedicated web address. Or you can access our specially created PDA-friendly site, at [pda.o2.co.uk](http://pda.o2.co.uk) where we've picked some of the best PDA sites available.

However, you can access any web site via Mobile Web, and by scrolling up and down or right to left, you should be able to view standard PC-sized pages on your Pocket PC or Palm™ Handheld.

#### Send and receive web-based email

Keep in touch with colleagues, customers, family and friends by email, wherever you are\*. Include photos and other attachments.

#### Access the Internet

With Mobile Web, you can access the same sites you visit on your office or home PC – and browsing is just the start.

**Visit** – all your favourite information and entertainment sites...

**Know now** – up to the minute news headlines, business information, market prices, sports results and reports...

**Access** – critical information, financial reports, share prices, trade directories...

**Prepare** – for business meetings on the move, research prospective customers and their competitors...

**Consult** – your online calendar and address books, before making business appointments and scheduling meetings...

**Check** – flight times and availability, rail delays, car parking...

**Monitor** – your bank account and keep your personal affairs under control when you're under pressure...

**Transact** – prices and stock availability, delivery dates, and place orders with your suppliers...

**Check out** – TV listings, book cinema and theatre tickets...

**Book** – a restaurant table, theatre tickets, taxis...

**Search** – for bars, clubs, restaurants, hotels...

**Shop around** – for books, CDs, DVDs, Hi Fi equipment...

**Snap up a bargain** – take advantage of last minute offers on holidays, weekend breaks...

**Chat** – in your favourite online chat room...

**Play** – games on the go...

**Watch** – video clips...

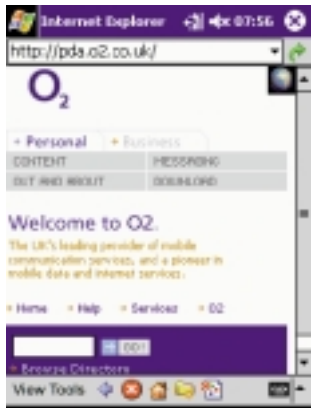
**Listen** – to music, download your favourite tracks...

**Send** – Instant Messages...

\* subject to network coverage

Your Mobile Web tariff also gives you access to WAP Internet services. See page 29 for more information about the benefits of WAP and how to set up your device to access WAP services. You can also visit [www.o2.co.uk](http://www.o2.co.uk) for more information.

## O2 pda homepage



The O2 PDA homepage gives you easy access to a growing number of hand-picked sites.

Here's just a sample of what's on offer...



### News

News at home or abroad from ITN.

### Sports

News and Scores from sports.com, ITN or CNN.



### Weather

Check out the weather through weather.com



### Business and finance

The latest business news from ITN. Keep on top of share prices through IMLweb. Log in to the DTI web site for your latest industry information. Track important parcels on the DHL courier site.

Email and messaging – with O2 onemail/ Connectedmail you can put all your emails, faxes and voicemails into one inbox, making it easy to access your messages. You can also use our calendar and address book to help keep you organised.



### Travel

Search for flight arrival and departure times with British Airways.



## charging and data usage



### Downloads

Downloads galore! budget tools, a powerful PowerPoint presentation viewer, an electronic shopping list, your favourite games

### Shopping

Let's go shopping! Flowers, music, electronics, computers, books – even cars...



### Maps and travel directions

Work out the quickest route to your destination and get a map of the tube.

### Entertainment

Look for places to eat, sleep or hang out, with CitySearch. If you love coffee, you'll find a site that locates coffee shops all over the world, or use our Starbucks store locator for something local. Joke of the day, horoscopes or news of the weird – something to lighten up a hard day. Check out GameGeek for the latest on the hottest games.

You will find the O2 PDA homepage at [pda.o2.co.uk](http://pda.o2.co.uk) – start exploring now!

### Pay for what you do – not how long it takes

Mobile Web charges are based on the amount of data you send or receive – rather than the amount of time you are connected. Once you've downloaded a web page or an email, you can take as long as you like to read it – it won't cost a penny more.

As your data usage increases you can choose a more suitable tariff at the end of any monthly billing period.

### Use your unused MB next month

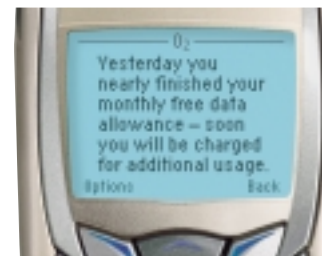
If you don't use your inclusive MB allowance in any single month, you can carry over to the following month†. Your rolled over allowance will be used first before you start using the current month's allowance.

† Any surplus data allowance can only be rolled over for one billing month.

### You're in control

There are two ways you can monitor your usage of Mobile Web.

**Mobile Web text message.\*** No need to wait until your bill arrives to tell where you are with your free MB usage – you can find out beforehand. We'll alert you with a text message when you're close to the limit of your inclusive monthly data allowance, and another when you have used it all!†



\* Not available from some service providers.

† O2 cannot be held responsible if for any reason you do not receive your text alert, unless as a result of our negligence.

### Mobile Web

Your mobile number: 077#####

You have 4 MB free mobile web use per month

You have carried forward 1 MB free from last month

You have a total of 5 MB free to use in this month

### Your Mobile Web usage

At the end of 22/04/2002

You have used 3 MB this month

You have 2 MB free usage remaining this month

**Mobile Web usage indicator.\*** Available online for you to access at any stage, your Mobile Web usage indicator will keep you up to speed with your MB allowance – how much you've used and what's remaining. It will also give information about your free inclusive bundle as well as any usage outside your free bundle.

- For security reasons, you will need to register to use this service, please visit [www.o2.co.uk/mobileweb](http://www.o2.co.uk/mobileweb) on your PC.
- Once you have registered, you can view the information by tapping the 'Services' option on the O2 PDA homepage ([pda.o2.co.uk](http://pda.o2.co.uk)) from your PDA.

**Mobile Web charges are based on the amount of data you send and receive over the O2 GPRS network. This may include charges for resent data, and additional information required to control data flow.**

To minimise costs – and maximise the speed of data transmission – the total amount of data carried over the network is substantially reduced by intelligent data compression.

Some web sites may attempt to send you information you have not requested. You can press 'Stop' at the top of your screen to stop this downloading. You can also turn off 'cookies' in your browser's advanced settings to stop unsolicited information being sent or received while you are online.



## what you can do with 1MB



Approximately 10KB



Approximately 5KB

### How much data?

Data is measured in bytes: there are 1,024 kilobytes (KB) in one Megabyte (MB).

### with just 1MB of data you can, typically...

View 100 PDA formatted web pages with images (each page assumed 10KB approximately).

View 200 handheld computer/PDA formatted text only web pages (each page assumed 5KB approximately).

All examples of data size and usage are estimated. Actual data used in any application may vary significantly. All web and WAP sites shown are given as examples only. Their use does not signify recommendation or authorisation of the site or of its contents, or any association between its owners and O<sub>2</sub>. Some web sites may not be configured for use with PDAs or Pocket PCs.

## accessing mobile web while abroad

Mobile Web users can access the Internet from anywhere in the world where there is a GSM network\*, via our Mobile Web GSM service. This facility is set up during the getting started process, using the Mobile Web Getting Started CD.

This GSM service has been specially optimised for Mobile Web and is available to customers on any O<sub>2</sub> Mobile Web tariff.

Standard international rates apply for calls made from other countries. All connections using GSM attract a per minute charge. Standard minimum charges apply. Please visit [www.o2.co.uk/mobileweb](http://www.o2.co.uk/mobileweb) for details of call charges.

If you visit or call several countries frequently, our International traveller service offers reduced call charges for international calls made from the UK, and calls made to and received from the UK while abroad (including Mobile Web access via GSM).

\*O<sub>2</sub> are currently working towards links with overseas networks to support an international Mobile Web GPRS service.

## section 5

### other useful information

#### Additional steps to set up your Pocket PC with Bluetooth...

##### Compaq Ipaq H3870

Having followed the set up instructions for Pocket PC...

- Choose **Programs** from the **Start** menu, then **O2 Mobile Web**.

Tap **Options** then **Advanced**. Tap **OK** on the pop-up warning.

- In the lower **Connections** box, double click on **O2 Mobile Web**.

• You will see a modem device window, tap on the drop-down menu and choose **Bluetooth Dialup Modem** (or the appropriate modem for your integrated PDA).

Bluetooth connections first require you to 'pair' the Bluetooth devices. Refer to your Bluetooth device manufacturer's user guide.

- Tap **OK**, then **Options**, then de-select **Advanced** by clicking on it.

You should now be returned to the normal O2 Mobile Web screen.

If you have any difficulty installing Mobile Web, please visit [www.O2.co.uk/mobileweb](http://www.O2.co.uk/mobileweb) or contact your service provider.

#### Additional steps to set up your Integrated Pocket PC...

##### Trium Mondo

Having followed the set up instructions for Pocket PC...

- Choose **Programs** from the **Start** menu, then **O2 Mobile Web**.

Tap **Options** then **Advanced**. Tap **OK** on the pop-up warning.

- In the lower **Connections** box, double click on **O2 Mobile Web**.

You will see a modem device window, tap on the drop-down menu and choose **Trium Mondo** (or the appropriate modem for your integrated PDA).

- Tap **OK**, then **Options**, then de-select **Advanced** by clicking on it.

You should now be returned to the normal O2 Mobile Web screen.

If you reset your Pocket PC you may have to re-run the procedure above.

If you have any difficulty installing Mobile Web, please visit [www.o2.co.uk/mobileweb](http://www.o2.co.uk/mobileweb) or contact your service provider.

## setting up your WAP services

#### What is WAP?

WAP is a quick and easy way of accessing the information you need, whenever you need it. Because it's text based, you can go straight to the information you want.

Email, news, travel information, football scores, WAP delivers almost anything and everything.

Buy a book. Find out what's on at your local cinema. Have a flutter with an online bookie. Listen to the charts. Check train times, flight arrivals and departures. It's all there for you.

#### News

News, everything from UK to World, sports to entertainment, business to strange.

#### Sports

News and scores from Sports.com and Eurosport.

#### Travel and directions

Check flight arrival and departure times with British Airways.

Check travel times including London Underground and London Buses.

Expedia

Lastminute.com

Thomas Cook

#### Entertainment

Look for somewhere to go with films and gigs.

Use Yell's excellent new City Guide.

Check out what's on TV.

Get the latest celebrity news and gossip from PeopleNews.

Joke of the day.

Games such as Thunderbirds, Star Trek, LMA manager plus lots of other fun stuff.

Build your own WAP site straight from your phone.

#### Shopping

Buy books and CDs on the move with Amazon

#### Messaging

Get email on your phone from O2 and also access other email services from BT Internet, Talk 21, AOL, Freeserve and Yahoo.

Use the O2 Instant Messenger service on your WAP phone

#### Setting up your WAP services.

To set up your mobile phone to receive text-based WAP screens over GPRS, enter the following information:

Name **WAP GPRS**

APN **wap.o2.co.uk**

Default url **http://wap.o2.co.uk/**

Port **9201**

(or **9203** if WTLS encrypted site required)

Security **Off**

(or **On** if WTLS encrypted site required)

IP Address **193.113.200.195**

Linger time **120 seconds**

Username **o2wap**

Password **password**

## uninstalling mobile web

To remove Mobile Web from your system, follow the uninstall process.

### Laptops:

Either...

- Click **Start, Programs, O2 Mobile Web**, and choose the **Uninstall** option, or
- Click **Start, Control Panel, Add/Remove Programs**, and select **O2 Mobile Web**, then choose the **remove** option, or
- Re-insert the Mobile Web 'Getting Started' CD, choose **Install**, and on the next screen choose the **Remove** option.

Always tick the 'Delete Profiles' option when deleting the application. If you encounter any messages such as 'A Read only file was detected', always click on 'Yes' to delete.

### Pocket PC:

Tap **Start, Settings, System, Remove Programs**, then choose **O2 Mobile Web**, then tap **Remove**.

### Palm™ Handhelds:

From the main screen, tap the top left of the screen for the **App Options** menu.

Tap **Delete**, then tap **O2 Mobile Web**, and tap **Delete**, then **Yes**. Tap **Done** to exit.

## linking your pda to your phone

Linking your PDA to your GPRS mobile phone is easy, but first you will need to activate your mobile's Infrared or Bluetooth port. To make an infrared connection, it is essential that the ports of your PDA and mobile phone are accurately aligned.

**Note:** We have included information on the phone models recommended for use with Mobile Web. This information is accurate at the time of printing, but you should refer to [www.o2.co.uk/mobileweb](http://www.o2.co.uk/mobileweb) for the latest information on recommended phones.

### Activating your phone's infrared port

Infrared ports can use a significant amount of battery power. If the infrared port on your mobile does not de-activate automatically (see your mobile's user guide), we recommend switching the port off, once you have finished using the Mobile Web service.



#### Ericsson T39

- Using **Menu** – right key, scroll to select screen **5 – Extras**.
- Press **Yes** key.
- Using **Menu** – right key, scroll to select option **3 – Infrared port**.
- Press **Yes** key.
- Press **Menu** – right key to select the **On** option.
- Press **Yes** key.

To de-activate, follow the instructions above, selecting 'Off' instead of 'On'.



#### Ericsson T68

- Press navigation key to display icons.
- Toggle navigation key: once to the right and then downwards twice, to highlight the **Connect** icon.
- Press navigation key to display the **Connect** screen.
- Press navigation key to select **Infrared port**.
- Toggle navigation key up or down to highlight **10 minutes**, and press to select.
- Press **No** key twice to return to the main screen.

To conserve battery power, the infrared port will de-activate itself, ten minutes after data transmission.



#### Ericsson R520

- Scroll to **Extras** and press **Yes** key.
- Scroll to **Infrared port** and press **Yes** key.
- Select **On** and press **Yes** key.
- To switch on automatic de-activation, select **10 minutes** and press **Yes** key.

To de-activate, follow the instructions above and select 'Off'.



#### Nokia 6310

- Press **Menu** key.
- Scroll until the screen displays **Infrared**.
- Press **Select** key.

To conserve battery power, the infrared port will de-activate itself when not in use.



#### Nokia 6510

- Press **Menu** key.
- Scroll until the screen displays **Infrared**.
- Press **Select** key.

To conserve battery power, the infrared port will de-activate itself when not in use.



#### Nokia 8310

- Press **Menu** key.
- Scroll until the screen displays **Infrared**.
- Press **Select** key.

To conserve battery power, the infrared port will de-activate itself when not in use.



#### Siemens S45

- Press **Menu** key and scroll until **Setup** is highlighted.
- Press **Select** key and scroll until **Connectivity** is highlighted.
- Press **Select** key and scroll until **IrDA** is highlighted.
- Press **Change** key. A tick will be displayed in the box to the left of IrDA.

To de-activate, follow the instructions above, deleting the tick from the IrDA box by pressing 'Change'.



#### Siemens ME45

- Press **Menu** key and scroll until **Setup** is highlighted.
- Press **Select** key and scroll until **Connectivity** is highlighted.
- Press **Select** key.
- Scroll until **IrDA** is highlighted.
- Press **Change** key. A tick will be displayed in the box to the left of IrDA.

To de-activate, follow the instructions above, deleting the tick from the IrDA box by pressing 'Change'.

If you have any difficulty with infrared activation, please refer to your handset manufacturer's user guide.

## activating your phone's bluetooth port

Bluetooth connections first require you to 'pair' the Bluetooth devices. Refer to your Bluetooth device manufacturer's instructions for detailed information.

#### Ericsson T39

- Using Menu – right key, scroll to select screen **5 – Extras**.
- Press **Yes** key.
- Using Menu – right key, scroll to select option **5 – Bluetooth**.
- Press **Yes** key.
- Press **Discoverable**.

To conserve battery power, Bluetooth will de-activate itself after three minutes, if not used.

Alternatively, from the Bluetooth menu you can select **Operation Mode**, and select 'On' to leave Bluetooth permanently on.

To de-activate, follow the instructions above, selecting 'Off' instead of 'On'.

#### Ericsson T68

- Press navigation key right to display icons.
- Toggle navigation key: once to the right and then downwards twice, to highlight the **Connect** icon.
- Press navigation key to display the **Connect** screen.
- Press navigation key to select **Bluetooth**.
- Press **Discoverable**,

To conserve battery power, Bluetooth will de-activate itself after three minutes if not used.

Alternatively, from the Bluetooth menu select **Options**, **Operation Mode**, and then 'On' to leave Bluetooth permanently on.

To de-activate, follow the instructions above, selecting 'Off' instead of 'On'.



## frequently asked questions

### What is Mobile Web?

Mobile Web is a new service that enables you to access the full Internet, on the move. You can access any web site, including those you currently visit on your work or home PC. In addition, our special portal designed for PDA users – O<sub>2</sub> PDA homepage – contains a wide range of handheld PC/PDA-friendly sites.

### How does Mobile Web compare to the Internet service I get at home?

Mobile Web is very similar to the Internet experience you get at home† – it's just more convenient. With the right devices, you can access Mobile Web, whenever and wherever you want.\*

† compared to standard PSTN dial-up line

\* subject to network coverage

### How does Mobile Web work?

You can view the Internet on your handheld PC/PDA or laptop using a GPRS device to access the Mobile Web service. You need to subscribe to Mobile Web, and go through a simple once-only set up process before you can use the service. Once you are set up, it takes only seconds to connect to the Internet.

### What is GPRS?

GPRS stands for General Packet Radio Service. With much higher data transfer speeds than the GSM service used for voice calls, text messages, and WAP services, GPRS is ideal for mobile Internet access.

### How is Mobile Web different from WAP?

Mobile Web gives you access to the full Internet. Using an Internet browser, you can view literally millions of different websites – in full colour – on a PDA or laptop screen. WAP screens enable you to view text-based information, only.

### How does surfing the Internet via Mobile Web compare to using GSM?

Because Mobile Web uses our GPRS service and advanced data compression technology, you can expect speeds up to 5 times faster than with GSM. With GPRS, you are only billed for the amount of data you send and receive. So, you pay for what you do, not the amount of time it takes you to do it. In addition, with GPRS, if you are online when someone calls, your phone will still ring and you can take the call. When you've finished, you're immediately back online.

### How does surfing the Internet over Mobile Web compare to using High Speed Circuit Switched Data (HSCSD)?

With Mobile Web, you are only billed for the amount of data you send and receive, not the time it takes you. With HSCSD you are charged for all the time you are connected. And with HSCSD, you can't take voice calls while you're online.

### Why charge per MB and not per minute?

Because, this way, you're effectively charged for what you do, not the amount of time it takes you to do it. After you have downloaded a web page or email you can take as long as you like to read it – it won't cost a penny more.

### How much does it cost to send an email?

An email is charged on the basis of how much data you send or receive. You may need to click through a few pages to get to your Internet based inbox, so the amount of data (and therefore cost) will differ depending on the nature of the pages. A typical PC-sized text only email page should take approximately 10KB to download.

### How much does it cost to look at a web-page?

Web pages are also charged by the volume of data you send or receive. You may need to click through a few pages to get to the page you want, so the amount of data (and therefore the cost) will differ depending on the nature of the pages. One typical PC-sized page with images should take approximately 35KB to download.

### What happens if my PDA loses all its memory?

If, for example, your battery runs out completely, you will have to run through the complete set-up procedure again.

### Do I need to have an Internet Service Provider (ISP), to use Mobile Web?

Not at all. O<sub>2</sub> is your mobile service provider – though you may wish to continue using your existing ISP for services such as email.

### How can I update the O<sub>2</sub> Mobile Web application when a new version comes out?

Every 30 days your PC will automatically check to see if a newer version, or new handset modem drivers are available. You can choose to run the 'Auto Update Agent' when it appears, or click 'Cancel'. If you choose to proceed the new version or drivers will download and install automatically when you next 'sync'

### Can I access my company LAN with Mobile Web?

No, the service does not provide LAN access, unless your company provides Internet access to your LAN. If your company has POP3 or IMAP4 access into your company LAN-based email, you may be able to use Mobile Web to access your email over the Internet. You should ask your company IT Manager whether you have this technology in your company.

O<sub>2</sub> also has a range of services that provide email and LAN access to company systems, including 'Blackberry' – a handheld device that gives mobile access to company email and other services. You should talk to your Service Provider about the options available from O<sub>2</sub> to access LANs on the move.

Mobile Web does enable you to have access to Internet-based email and the full Internet through a range of devices. You can also choose to read and reply to work based email offline.

### Need help with Mobile Web?

If you have difficulty connecting to our Mobile Web service, please contact your Service Provider. Alternatively, you'll find detailed information on setting up your laptop and using the Mobile Web service on our web site.

Visit: [www.o2.co.uk/mobileweb](http://www.o2.co.uk/mobileweb)



## troubleshooting

Before you can access the Mobile Web service from your handheld PC/PDA, you will need a subscription.

### Have you got the right devices?

- Mobile Web is not accessible from all phones and handheld PC/PDAs. To check whether you have a suitable phone and handheld PC/PDA, visit [www.o2.co.uk/mobileweb](http://www.o2.co.uk/mobileweb).

### Can't find the O2 Mobile Web application on your PDA?

- Before you can install the O2 Mobile Web application from the 'Getting Started' CD, you must be able to 'sync' your handheld PC/PDA with your PC. To set up a 'sync' relationship, refer to your PDA manufacturer's instructions.
- Before you can run a 'sync' session, your PDA will need to be in its cradle, or connected to your PC via a cable. The application will only load after a 'sync' session has occurred.
- The application can be found under **start, programs, O2 Mobile Web** on a Pocket PC, and under the applications menu from **home** on Palm™ Handhelds.

### Trouble using Mobile Web with Infrared?

- Make sure that your mobile phone's infrared port is activated (see pages 31 - 34), and that it is aligned with the infrared port on your handheld PC/PDA.
- Power off your phone, and turn it back on again. This will let your phone reset, and may fix the problem.
- Close all applications, then re-boot your handheld PC/PDA by following the manufacturer's instructions. Note: do not perform a full reset as this could delete all stored information!

### Trouble using Mobile Web with Bluetooth?

- Bluetooth devices must be 'paired' before they can talk to each other. The steps for pairing are different for each kind of Bluetooth device – for detailed instructions, refer to your phone or PDA user guide.
- Make sure that your mobile phone's Bluetooth port is activated (see pages 35), and that the Bluetooth port on your handheld PC/PDA is also on.
- Power off your phone, and turn it back on again. This will let your phone reset, and may fix the problem.
- Close all applications, then re-boot your handheld PC/PDA, following the manufacturer's instructions. Note: do not perform a full reset as this could delete all stored information!

### Trouble with Email?

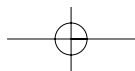
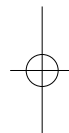
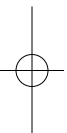
- To send or receive POP3 or IMAP4 email, you will need to have an open Mobile Web connection, and have set up a POP3 or IMAP4 service on your handheld PC/PDA (see pages 9 - 12 for Pocket PC, or pages 19 - 20 for Palm Handhelds).
- Your email service provider or IT department will need to support POP3 or IMAP4 email access. Check with them to make sure.

### Still not working?

- If none of the previous steps work, try uninstalling the Mobile Web application from your handheld PC/PDA by following the steps on page 30, and then reinstall.

We hope that these tips have been helpful. If, however, you are still unable to fix your problem, please contact your service provider.





## Free Manuals Download Website

<http://myh66.com>

<http://usermanuals.us>

<http://www.somanuals.com>

<http://www.4manuals.cc>

<http://www.manual-lib.com>

<http://www.404manual.com>

<http://www.luxmanual.com>

<http://aubethermostatmanual.com>

Golf course search by state

<http://golfingnear.com>

Email search by domain

<http://emailbydomain.com>

Auto manuals search

<http://auto.somanuals.com>

TV manuals search

<http://tv.somanuals.com>