

# IBM ThinkPad i Series 1200/1300 Setup Guide



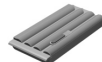
## Unpacking checklist

Thank you for purchasing the IBM ThinkPad i Series 1200/1300 computer. Match the items on this list with the items in the box. If any item is missing or damaged, please contact your place of purchase.

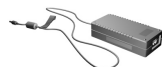
**Computer**



**Battery pack**



**AC Adapter**



**Power cord**



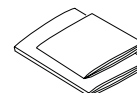
**CDs:**

- Software Selections CD
- Lotus SmartSuite CD or flyer
- Recovery CD kit for Windows



**Books:**

- Setup Guide
- User's Reference



**Manual package for Windows**



**Telephone cable**



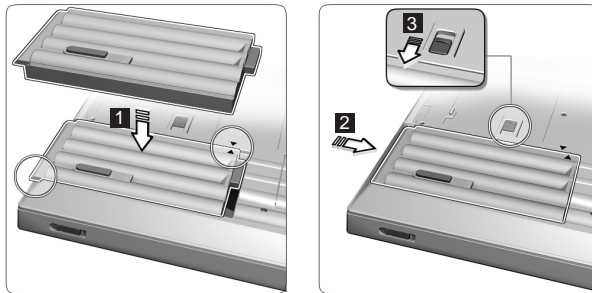
**Miscellaneous parts:**

- TrackPoint cap

## Setting up your computer

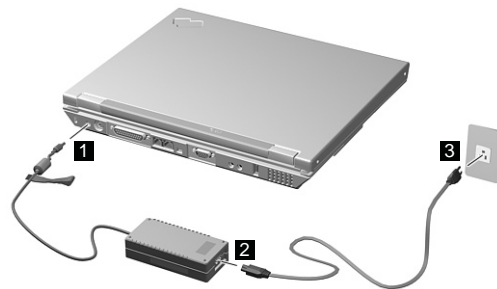
### 1. Connect power.

- a. Turn the computer over. Set the battery pack in the battery compartment (1), and slide it into place (2).



Secure the battery pack by sliding the battery-pack latch to the lock position (3).

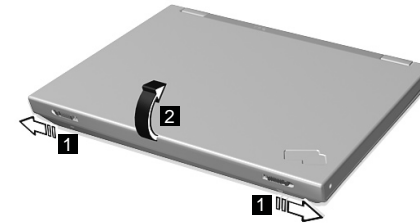
- b. Connect the AC Adapter to the computer's power jack (at the rear of the computer) in the order shown.



### 2. Turn on system.

- a. Open the liquid crystal display (LCD).

Pull the LCD latches (1) and open the LCD (2). Then position the LCD so that it is convenient for viewing.



- b. Press the power switch (1).



### 3. Operating controls.

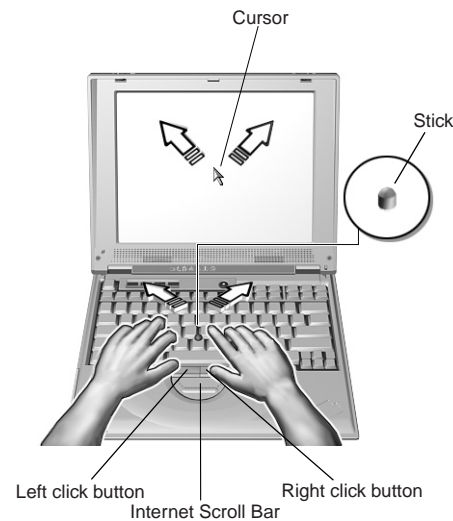
#### Using the TrackPoint

The TrackPoint is a unique device for moving the cursor on the screen. You can perform all mouse operations with the TrackPoint. The left and right click buttons function like the left and right click buttons on a mouse. For an explanation of the Internet Scroll Bar, see the *User's Reference*.

To move the cursor, use the red-topped stick at the center of the keyboard. Press gently with your left or right index finger in the direction you want to move the cursor. To select and

drag an object, press and hold one of the click buttons with either thumb as required by your software.

**Click** means to press the left click button once. **Double-click** means to press the left click button twice within 1 second.



For more information about the TrackPoint, see the *User's Reference*.

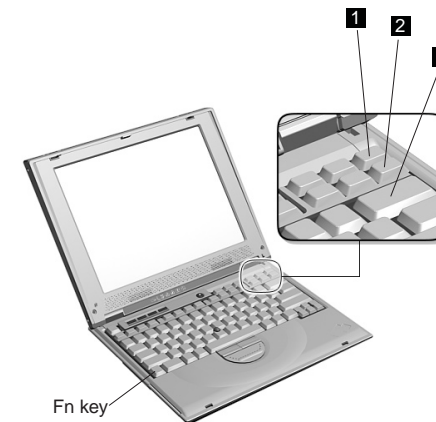
### Using the volume control

You can adjust the sound level of the built-in speakers by using the following three buttons.

- (1) **Fn+PgUp**(Volume up): The volume increases.

- (2) **Fn+PgDn**(Volume down): The volume decreases.
- (3) **Fn+Backspace**(Mute): Sounds turn off.

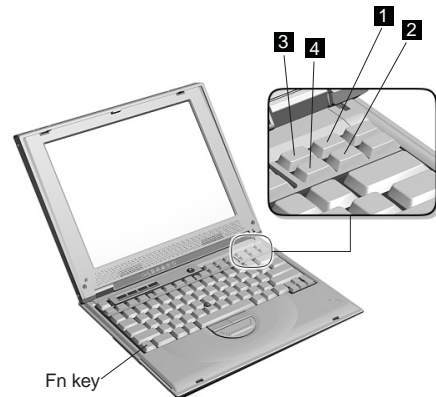
The mute function is not disabled when you power off the computer and power it on again. To turn on the sound, press Fn+PgUp or Fn+PgDn.



The volume indicator appears on the screen for a few seconds when you press one of these buttons. For more details on volume control, see the *Online User's Guide*.

### Using the brightness and contrast controls

Adjust the display's brightness by pressing (1) **Fn+Home** to increase or (2) **Fn+End** to decrease. Press (3) **Fn+Insert** or (4) **Fn+Delete** to increase or decrease the display's contrast.



**Note:** The contrast controls are available on models with HPA displays. Models with TFT displays have optimized contrast levels.

#### 4. Setting up Windows.

The computer is preloaded with Windows 98 or Windows 2000. Follow the instructions on the computer display to set up the operating system.

After setting up Windows, take a few moments to complete the ThinkPad registration. The information provided by you will help IBM to better serve you in the future. You can register your computer at the following web site:

**<http://www.pc.ibm.com/register>**

**Note:** You may connect the telephone cable to the modem jack and an analog phone jack if you wish to register electronically. Do not connect if you are in an office building or hotel with a PBX system.

## Service and support information

### Getting help around the world

International Warranty Service (IWS) is available for customers who are moving products or traveling to countries where their product (as identified by the 4-digit machine type) is sold and serviced by IBM or IBM authorized representatives. Warranty service delivery methods of the servicing country will be in effect. IBM reserves the right to change or modify its service delivery methods by country at any time without notice. Service procedures vary by country, and some service and parts may not be available in all countries because of the laws of that particular country. Some countries have fees that apply where service is provided on-site in remote locations.

To register, call one of the following IWS offices:

Southeast Asia, Australia, New Zealand, and Hong Kong:	61-2-9354-4171
Canada, Latin America, and the U.S.:	1-800-497-7426
	or 248-740-1215
Europe, Middle East, and Africa:	44-1475-893638
Japan, Korea, China (except Hong Kong), and Taiwan:	81-46-273-7598

Before you call for service, have on hand:

- The exact wording of any error messages
- Hardware and software configuration information
- A description of the problem
- Information and serial numbers of any options installed on your system

Your Name:

---

Company Name:

---

Machine Type:

---

Serial Number (S/N):

---

Place of Purchase:

---

IBM Service Website:

---

IBM Service Number:

---

## Free Manuals Download Website

<http://myh66.com>

<http://usermanuals.us>

<http://www.somanuals.com>

<http://www.4manuals.cc>

<http://www.manual-lib.com>

<http://www.404manual.com>

<http://www.luxmanual.com>

<http://aubethermostatmanual.com>

Golf course search by state

<http://golfingnear.com>

Email search by domain

<http://emailbydomain.com>

Auto manuals search

<http://auto.somanuals.com>

TV manuals search

<http://tv.somanuals.com>