

**IBM ThinkPad 380XD/385XD
Setup Guide**

IBM

**IBM ThinkPad 380XD/385XD
Setup Guide**

First Edition (November 1997)

IBM might not be offering the products, services, or features discussed in this document in all countries, and the information is subject to change without notice. Consult your local representative for information on the products, services, and features available in your area.

The following paragraph does not apply to the United Kingdom or any country where such provisions are inconsistent with local law:

INTERNATIONAL BUSINESS MACHINES CORPORATION PROVIDES THIS PUBLICATION "AS IS" WITHOUT ANY WARRANTY OF ANY KIND, EITHER EXPRESS OR IMPLIED, INCLUDING, BUT NOT LIMITED TO, THE LIMITED WARRANTIES OF MERCHANTABILITY OR FITNESS FOR A PARTICULAR PURPOSE. Some states do not allow disclaimers of express or implied warranties in certain transactions; therefore, this statement may not apply to you.

This publication could include technical inaccuracies or typographical errors. Changes are periodically made to the information herein; these changes will be incorporated in new editions of the publication. IBM may make improvements or changes in the products or the programs described in this publication at any time.

Requests for technical information about IBM products should be made to your IBM Authorized Dealer or your IBM Marketing Representative.

Copyright International Business Machines Corporation 1997. All rights reserved. Note to U.S. Government Users – Documentation related to restricted rights – Use, duplication, or disclosure is subject to restrictions set forth in GSA ADP Schedule Contract with IBM Corp.

Notices

References in this publication to IBM products, programs, or services do not imply that IBM intends to make these available in all countries in which IBM operates. Any reference to an IBM product, program, or service is not intended to state or imply that only that IBM product, program, or service may be used. Any functionally equivalent product, program, or service that does not infringe any of the intellectual property rights of IBM may be used instead of the IBM product, program, or service. The evaluation and verification of operation in conjunction with other products, except those expressly designated by IBM, are the responsibility of the user.

IBM may have patents or pending patent applications covering subject matter in this document. The furnishing of this document does not give you any license to these patents. You can send license inquiries, in writing, to the IBM Director of Licensing, IBM Corporation, 500 Columbus Avenue, Thornwood, NY 10594, U.S.A.

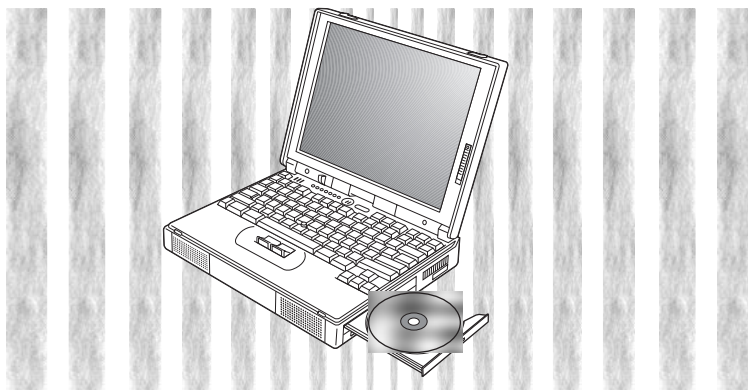
Trademarks

IBM, ThinkPad, and TrackPoint are trademarks of the IBM Corporation in the United States or other countries or both:

Microsoft, Windows, Windows NT, and the Windows 95 flag logo are trademarks or registered trademarks of the Microsoft Corporation.

Contents

| | |
|--|----|
| Checking Your Items | 1 |
| Setting Up Your Computer | 5 |
| Setting Up Windows 95 | 11 |
| Registering Your Computer | 15 |
| Shutting Down Windows 95 | 17 |
| Getting More Information | 19 |

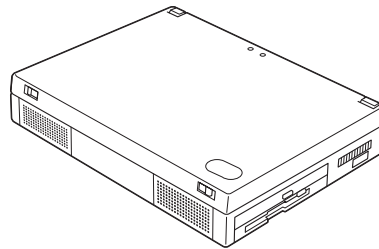


Checking Your Items

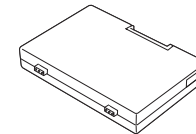
Welcome to the world of ThinkPad computers!

First, remove the items from the shipping box. Match the items, one by one, with the following figures. If any item is missing or damaged, contact your place of purchase.

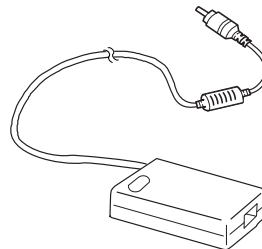
Computer



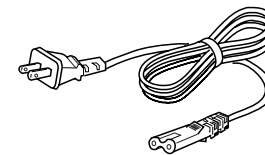
Battery Pack



AC Adapter

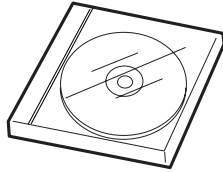


Power Cord



Note: In some countries, a 3-pin power cord (different from the one shown) comes with your computer. In this case, make sure you read the electrical safety notice on page 3.

Recovery CD-ROM Package



Note: If your computer is not preloaded with Windows 95, the Recovery CD-ROM package does not come with the computer.

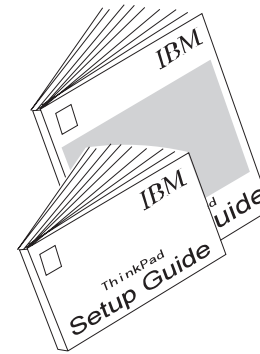
ThinkPad Envelope

This envelope contains:

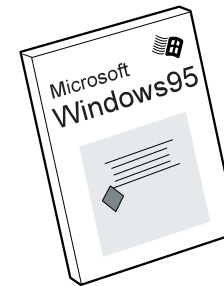
- International Service Information
- International Program License Agreement booklet
- International Program License Agreement information sheet
- Multilingual License Information
- Other brochures and flyers

ThinkPad Manuals

Setup Guide (this book)
User's Guide



Introducing Microsoft Windows 95, the Windows 95 user's guide (with a CD-ROM)

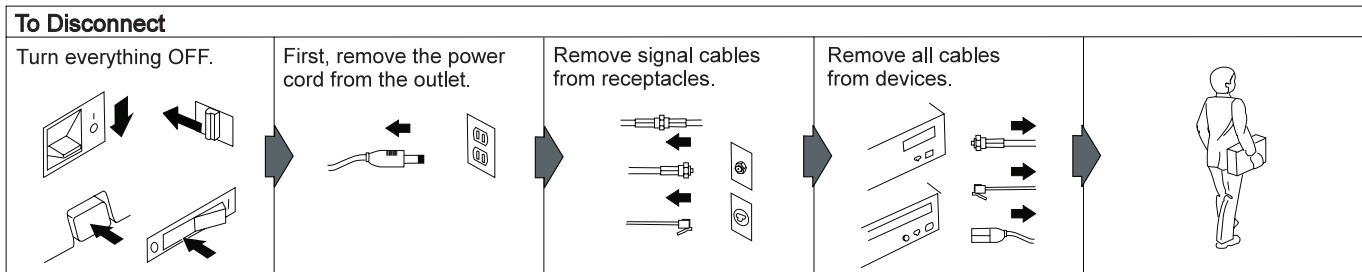
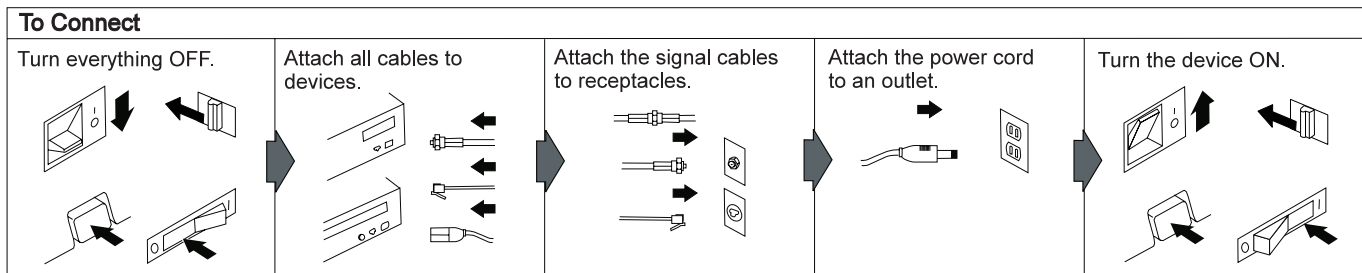


Note: If your computer is not preloaded with Windows 95, the book does not come with the computer.

Electrical Safety Notice: If a 3-pin power cord came with your computer, you need to follow this safety notice.



Electrical current from power, telephone, and communication cables is hazardous. To avoid shock hazard, connect and disconnect cables as shown below when installing, moving, or opening the covers of product or attached devices. The 3-pin power cord must be used with a properly grounded outlet.



Note: In the U.K., by law:

The telephone line cable must be connected after the power cord.

The power cord must be disconnected after the telephone line cable.

Setting Up Your Computer

You are now ready to assemble and start your computer.

1 Turn the computer upside down.



DANGER

The battery pack provided with your computer contains a small amount of harmful substances. To avoid possible injury:

Keep the battery pack away from fire.

Do not expose the battery pack to water or rain.

Do not attempt to disassemble the battery pack.

Avoid mechanical shocks to the battery.

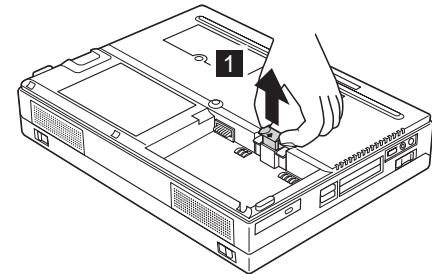
Always use battery packs recommended by IBM.

Keep the battery pack away from children.

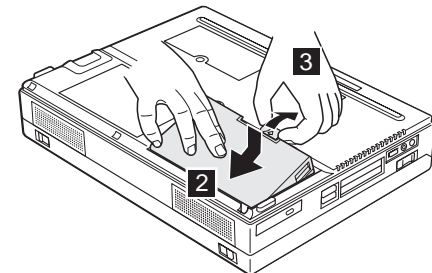
When disposing of the battery, comply with local ordinances or regulations or your company's safety standards.

2 Install the battery pack.

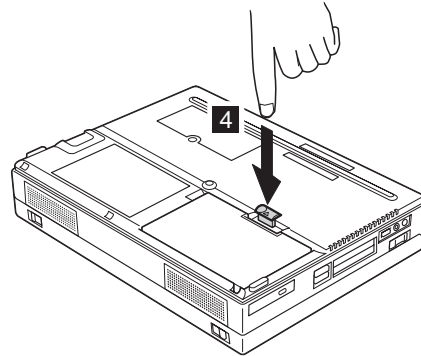
a) Pull the battery-pack lock upward 1 .



b) Install the battery pack as shown 2 , sliding the battery-pack lock toward the rear of the computer 3 .



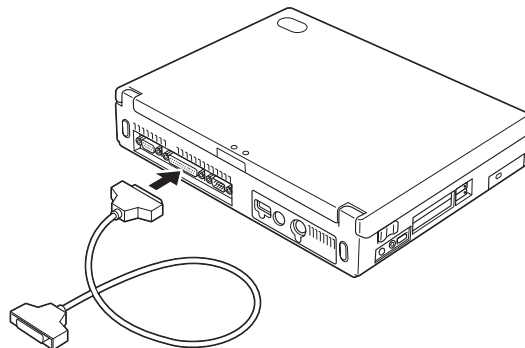
c) Press the battery-pack lock downward 4 .



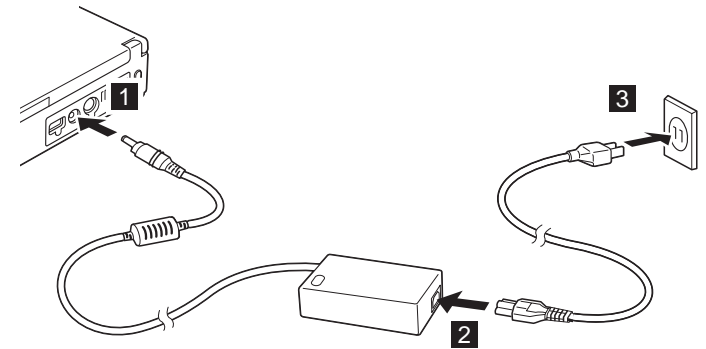
3 Turn the computer over again.

4 Connect your printer.

If you have a printer, open the connector cover of your computer, and connect the printer cable to the parallel port. Then turn the printer power on.



5 Connect the AC Adapter to the computer as shown.

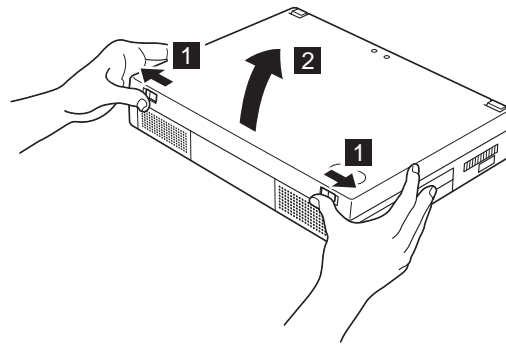


6 Open the liquid crystal display.

- a) Press the liquid crystal display (LCD) latches 1 and open the LCD 2.
- b) Position the LCD so that it is convenient for viewing. The LCD opens up to 135°.

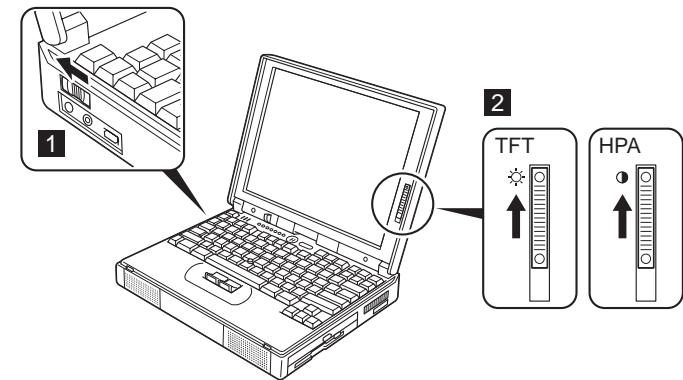
Attention

Do **not** force the LCD to open flat.



7 Turn the power on.

- a) Push and release the power switch to turn the computer 1 on. The power switch automatically snaps back to its original position.
- b) Adjust the brightness (for a TFT display model) and the contrast (for an HPA display model) of the display with the brightness control or the contrast control 2.



After a single beep, the “Regional Settings” window appears.

Congratulations if you have the window successfully displayed! Move on to the following chapter, “Setting Up Windows 95.”

If any other window appears, a failure might have occurred in the computer. See the *ThinkPad User's Guide*.

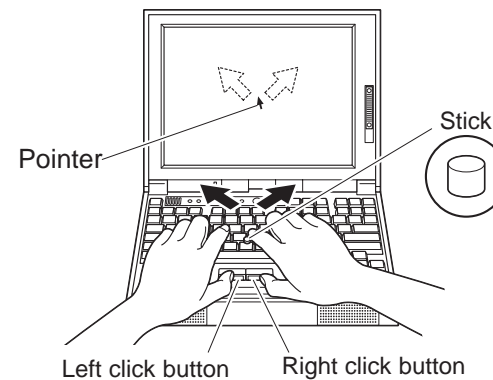
If you do not know how to operate with the TrackPoint III, see the following information.

Using the TrackPoint III

The TrackPoint III is a unique device for moving the pointer on the screen. The left and right click buttons function like the left and right click buttons on a mouse. So you can perform all the mouse operations with the TrackPoint III.

To move the pointer, press gently on the red-topped stick at the center of the keyboard with your left or right index finger in the direction you want it to move. To select and drag an object, press and hold one of the click buttons with either thumb as required by your software.

Click means to press the left click button once. **Double-click** means to press the left click button twice within 1 second.

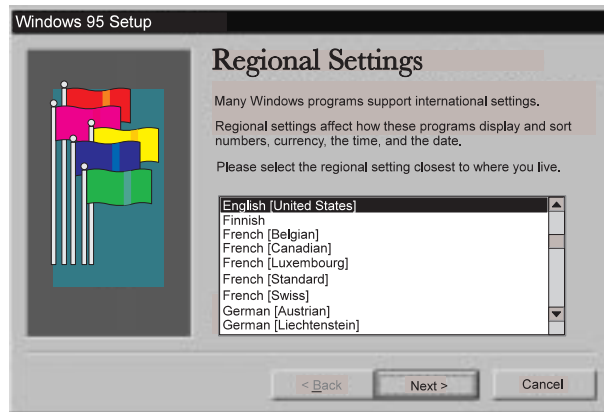


For more information about the TrackPoint III, see the *ThinkPad User's Guide*.

Setting Up Windows 95

Note: If the system stops while you are setting up Windows 95, turn the power off and then on again.

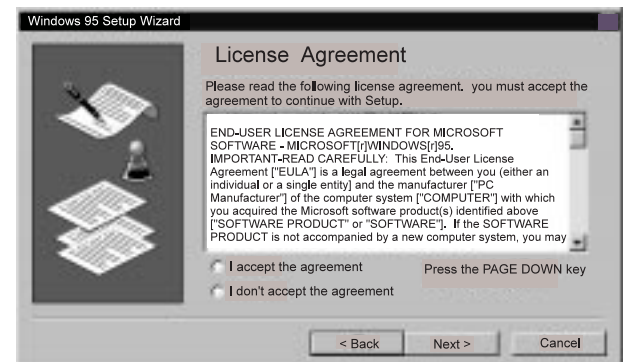
The following window should be displayed on your screen:



- 1 From the list, select the language you will be using. Then click on **Next**. The “Keyboard Layout” window appears.
- 2 From the list, select the keyboard you will be using. Then click on **Next**. The “User Information” window appears:



- 3 Type your name (and company name, if necessary) in the fields. Then click on **Next**. The “License Agreement” window appears:

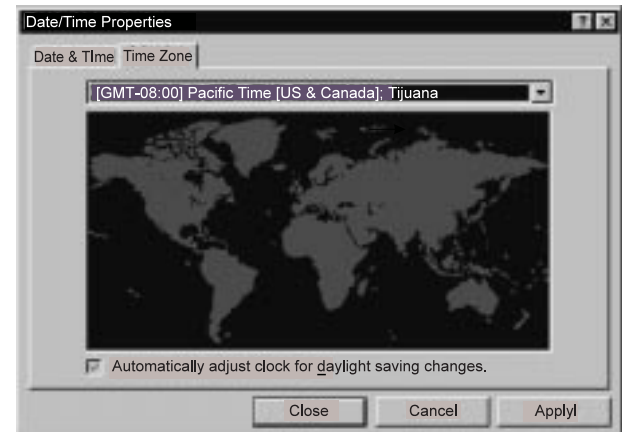



- 4 Read the contents of the window. If you accept the agreement, click on **I accept the agreement**. Then click on **Next**. The “Certificate of Authenticity” window appears:




- 5 Look at the cover page of *Introducing Microsoft Windows 95*. On your “Certificate of Authenticity,” find the “Product ID” above the bar code. In the three input fields of the window, type that number. Then click on **Next**. The “Start Wizard” window appears.

- 6 Click on **Finish** to start Windows 95. Some messages might appear, and then the “Date/Time Properties” window appears:



- 7 Click on  and select from the list the region closest to your location.

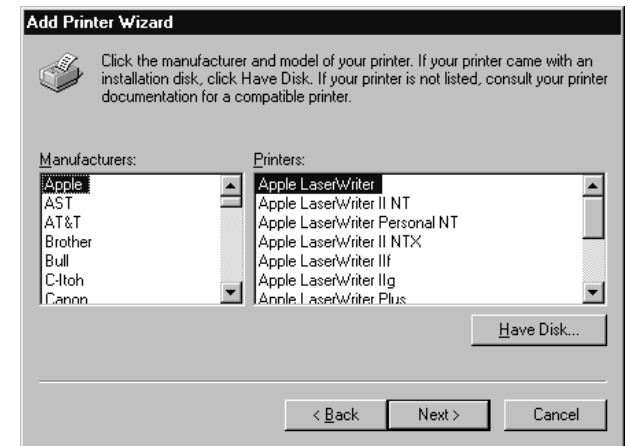
If you do *not* want to automatically adjust the clock for daylight saving time, remove the check from the checkbox (), by clicking on the check mark in the box.

- 8 Click on the tab for **Date & Time** and go to that page. Check that the date and time are correct. If not, adjust them. Click on **Close**. The first “Add Printer Wizard” window appears:



Note: If you do not have a printer, or want to set up a printer later, click on **Cancel** and skip the remaining steps. The setup is finished and you can start using your computer. You can set up a printer later by clicking on **Start, Settings, Printer** after you start Windows 95.

- 9 Click on **Next** to set up your printer. The second “Add Printer Wizard” window appears:



- 10 Look for your printer manufacturer in the **Manufacturers** list.

If your manufacturer is listed:

- a) Click on your printer manufacturer.

If your printer model is listed in the **Printers** list:

- b) Select your printer from the list and click on **Next**.

If your manufacturer or printer is not listed:

- a) Click on **Have Disk**. The “Install from Disk” window appears.
- b) Insert the device driver diskettes that came with your printer into the diskette drive and click on **OK**.
- c) Select your printer from the list and click on **Next**.

The third “Add Printer Wizard” window appears:



11 Select the port you want to use with the printer, and click on **Next**. (LPT1 is a default selection.) The fourth “Add Printer Wizard” window appears:



12 Type in a name you want for your printer, and click on **Next**. (You can use the name supplied.) The last “Add Printer Wizard” window appears.

13 Select **Yes** and click on **Finish**. A test page is printed.

14 Did the test page print correctly?

Click on **Yes** if so. The Windows 95 desktop appears.


Click on **No** if not. The “Windows Help” window appears. Follow this window and solve your printer problem.

You can now start using your computer by reading the *ThinkPad User's Guide*.

To shut down your computer, go to “Shutting Down Windows 95.”

Registering Your Computer

After setting up Windows 95, take a few moments to complete the ThinkPad registration. The information provided by you will help IBM to better serve you in the future. To register with Windows 95 desktop, do the following:

- 1** Double-click on the **Register** icon ().
- 2** Follow the instructions on the screen to complete the registration.

If you want to register your computer later, follow the same procedure.

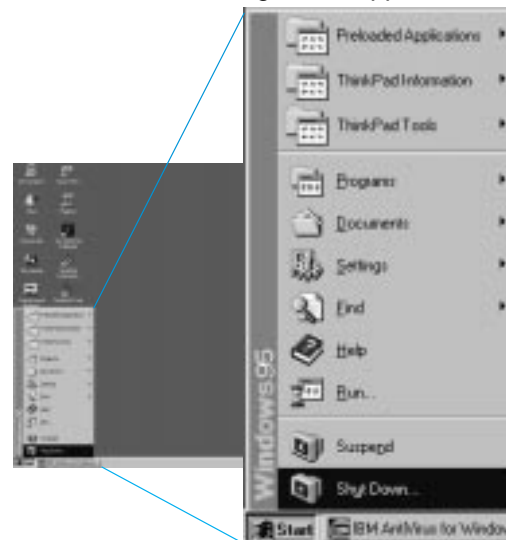
Note: If your computer uses other operating system, go to the following web site to complete registration.

<http://www.us.pc.ibm.com/register>

Shutting Down Windows 95

When you are finished setting up Windows 95 and you want to shut down, do the following:

- 1 Click on **Start** at the bottom left corner of the screen. The following menu appears:



- 2 Click on **Shut Down**. A confirmation message appears. **Shut down the computer?** is the default selection.
- 3 Click on **Yes** if you want to shut down the computer. The power turns off automatically.

Note

When you finish using an application software program and you want to shut down the computer, close the program first, and then use this procedure to shut down Windows 95.

To prevent damage to your computer files, make sure that you shut down Windows 95 every time you finish.

Getting More Information

After you have completed setting up your computer and Windows 95, you can start using your computer:

If you want to learn more about your computer, refer to the *ThinkPad User's Guide*. It gives you the following information:

- Learning about the hardware features
- Using the ThinkPad Configuration program and Easy-Setup
- Installing options and operating the computer
- Using battery power
- Using the security features
- Solving computer problems
- Getting service
- Learning about specifications and product warranties

If you want to perform more complicated tasks with your computer, refer to the *ThinkPad Online Book*. It gives you the following information:

- Using your computer in foreign countries
- Using a PC Card
- Resolving system resource conflicts
- Installing software
- Controlling and managing systems over a network
- Solving computer problems

Note: To start the ThinkPad Online Book, refer to the *ThinkPad User's Guide*.

Attention

Your ThinkPad computer provides two ways to recover lost or damaged software, the Diskette Factory program and the Recovery CD. For details, refer to the *ThinkPad User's Guide*.

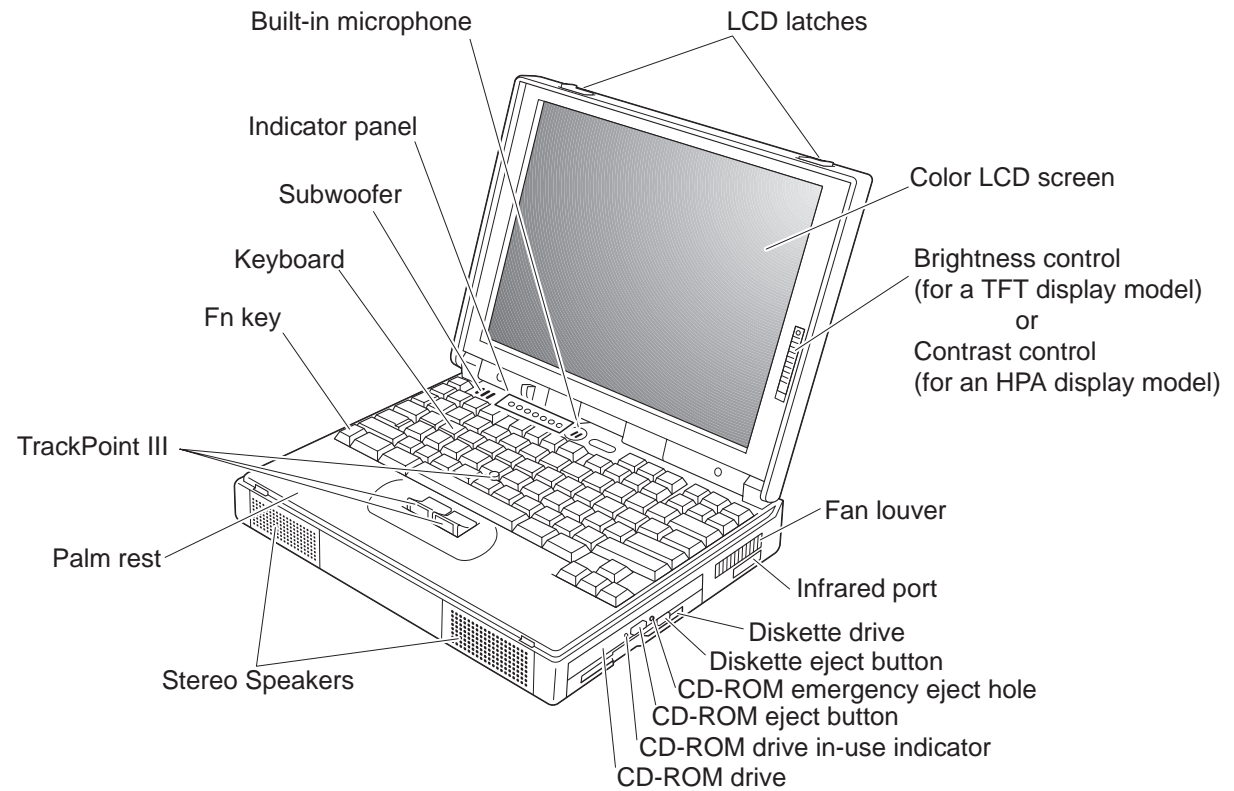
If your computer is not preloaded with Windows 95, the Recovery CD does not come with the computer.

Note: You can get support information through the IBM Internet home page, at the following URL:

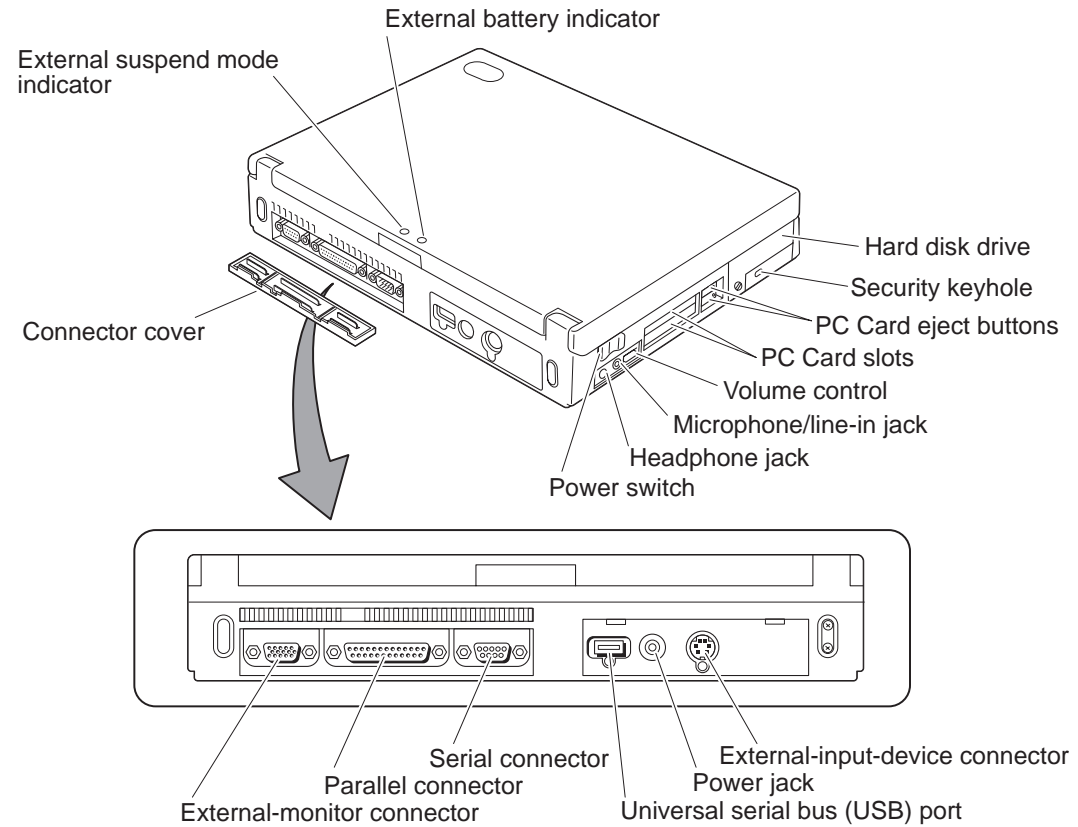
<http://www.us.pc.ibm.com>

You can identify the hardware features on your computer here.

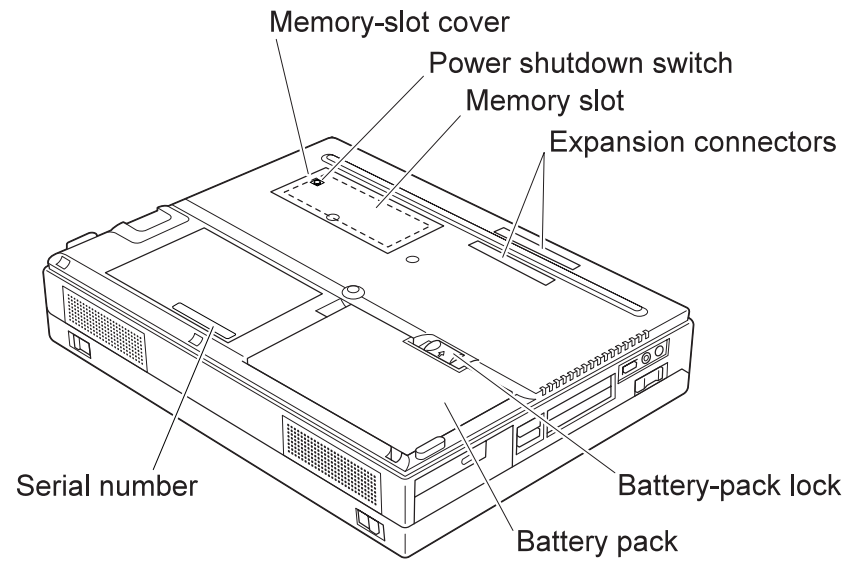
Front View



Rear View



Bottom View (with Battery Pack Installed)



IBM

Part Number: 05L2144

Printed in the United States of America



Free Manuals Download Website

<http://myh66.com>

<http://usermanuals.us>

<http://www.somanuals.com>

<http://www.4manuals.cc>

<http://www.manual-lib.com>

<http://www.404manual.com>

<http://www.luxmanual.com>

<http://aubethermostatmanual.com>

Golf course search by state

<http://golfingnear.com>

Email search by domain

<http://emailbydomain.com>

Auto manuals search

<http://auto.somanuals.com>

TV manuals search

<http://tv.somanuals.com>